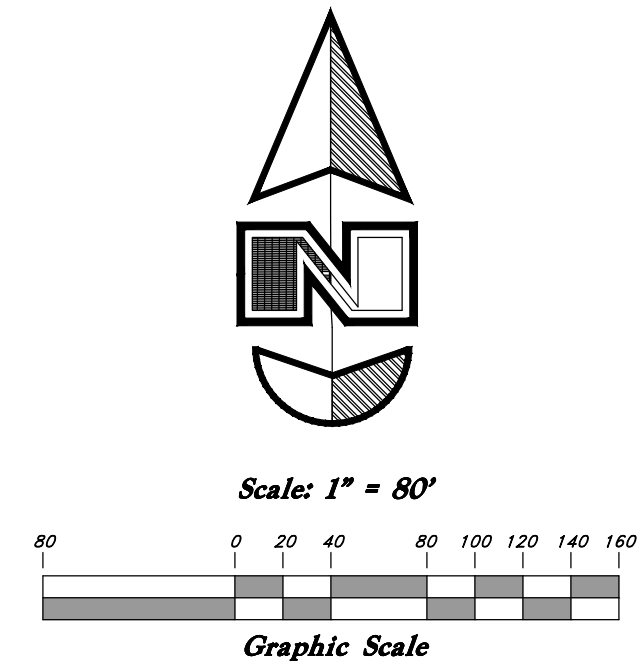


VICINITY MAP
Not to Scale



Curve #	Delta	Radius	Length	Chord Direction	Chord Length
C1	90°28'24"	10.00'	15.79'	S 44°45'48" E	14.20'
C2	90°00'00"	10.00'	15.71'	N 45°00'00" E	14.14'
C3	49°59'41"	15.00'	13.09'	N 24°59'51" W	12.68'
C4	52°53'52"	55.00'	50.78'	N 23°32'45" W	48.99'
C5	87°05'49"	55.00'	83.61'	N 46°27'05" E	75.79'
C6	87°05'49"	55.00'	83.61'	S 46°27'05" E	75.79'
C7	52°53'52"	55.00'	50.78'	S 23°32'45" W	48.99'
C8	49°59'41"	15.00'	13.09'	S 24°59'51" W	12.68'
C9	90°00'00"	10.00'	15.71'	S 45°00'00" E	14.14'
C10	89°29'13"	10.00'	15.62'	S 45°15'24" W	14.08'
C11	90°00'14"	10.00'	15.71'	S 44°29'22" E	14.14'
C12	89°59'44"	10.00'	15.71'	S 45°30'39" W	14.14'

DESCRIPTION

A part of the Southwest Quarter of Section 21 Township 6 North, Range 2 West, Salt Lake Base and Meridian, U.S. Survey;

Beginning at a point being 589.55' feet North 0°30'47" East along the Section line from the Southwest Corner of said Section 21, and West 33.00 feet; running thence North 88°57'30" West 709.53 feet; thence North 0°30'47" East 167.77 feet; thence North 89°02'03" West 168.69 feet; thence North 0°53'23" East 1113.79 feet; thence South 89°29'13" East 453.65 feet; thence South 0°48'38" West 235.99 feet; thence South 89°29'13" East 418.44 feet; thence South 0°30'47" West 1053.43 feet to the Point of Beginning.

Contains 22.91 Acres more or less

WEBER COUNTY COMMISSION ACCEPTANCE

This is to certify that this subdivision plat, the dedication of streets and other public ways and financial guarantee of public improvements associated with this subdivision, thereon are hereby approved and accepted by the Commissioners of Weber County, Utah this ___ day of ___, 2022.

Chairman, Weber County Commission

Attest:

Title:

WEBER COUNTY ATTORNEY

I have examined the financial guarantee and other documents associated with this subdivision plat, and in my opinion they conform with the County Ordinance applicable thereto and now in force and effect. Signed this ___ day of ___, 2022.

WEBER COUNTY SURVEYOR

I hereby certify that the Weber County Surveyor's Office has reviewed this plat and all conditions for approval by this office has been satisfied. The approval for this plat by the Weber County Surveyor does not relieve the Licensed Land Surveyor who executed this plat from the responsibilities and/or liabilities associated therewith. Signed this ___ day of ___, 2022.

Weber County Surveyor

WEBER COUNTY ENGINEER

I hereby certify that the required public improvement standards and drawings for this subdivision conform with County standards and the amount of the financial guarantee is sufficient for the installation of these improvements. Signed this ___ day of ___, 2022.

Weber County Engineer

WEBER COUNTY PLANNING COMMISSION APPROVAL

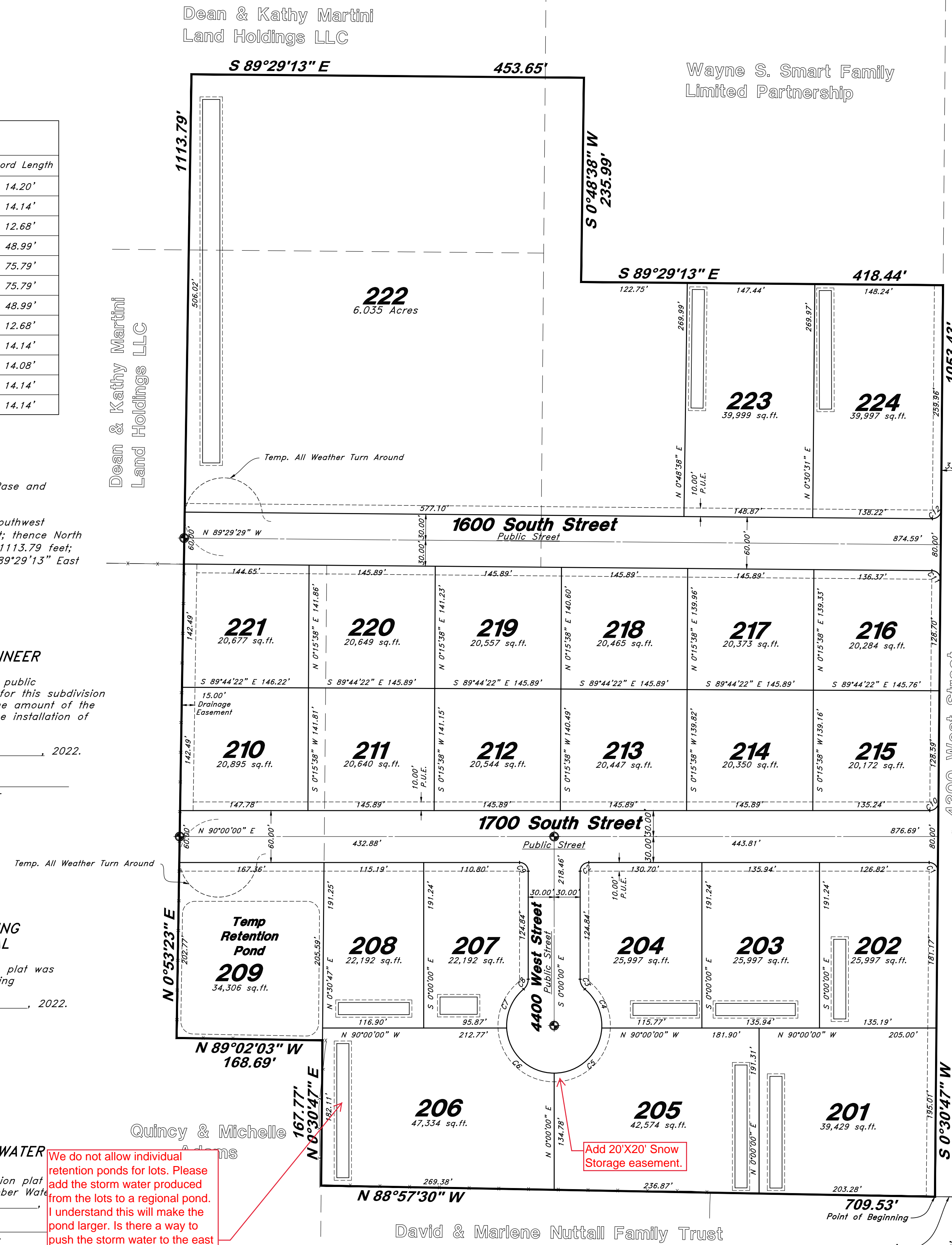
This is to certify that this subdivision plat was duly approved by the Weber County Planning Commission. Signed this ___ day of ___, 2022.

Taylor West Weber Water

This is to certify that this subdivision plat approved by the Taylor West Weber Water. Signed this ___ day of ___, 2022.

Taylor West Weber Water

We do not allow individual retention ponds for lots. Please add the storm water produced from the lots to a regional pond. I understand this will make the pond larger. Is there a way to push the storm water to the east and tie into the existing storm drain line going south?



Dean & Kathy Martini
Land Holdings LLC

Wayne S. Smart Family
Limited Partnership

Dean & Kathy Martini
Land Holdings LLC

Weber School District

Smart Fields Phase 1

103

102

101

SURVEYOR'S CERTIFICATE

I, Andy Hubbard, do hereby certify that I am a Professional Land Surveyor in the State of Utah, and that I hold License No. 6242920 in accordance with Title 58, Chapter 22, of the Professional Engineers and Land Surveyors Licensing Act. I also certify that I have completed a survey of the property described herein in accordance with Section 17-23-17 and that I have verified all measurements shown hereon this plat of Smart Fields Subdivision Phase 2 in Weber County, Utah and that it has been correctly drawn to the designated scale and is a true and correct representation of the following description of lands included in said subdivision, based on data compiled from records in the Weber County Recorder's Office. Monuments have been found or placed as represented on this plat. I furthermore certify that all lots within this Subdivision hereby meet all current lot width and area requirements of the Weber County Zoning Ordinance. Signed this ___ day of ___, 2022.

6242920
License No.

Andy Hubbard

OWNERS DEDICATION

We the undersigned owners of the herein described tract of land, do hereby set apart and subdivide the same into Lots, and Public Streets as shown on the plat and name said tract Smart Fields Subdivision Phase 2 and also do grant and dedicate to Weber County a perpetual right and easement over, upon and under the lands designated hereon as public utility easements, the same to be used for the maintenance and operation of public utility service line and storm drainage facilities, whichever is applicable as may be authorized by the governing authority, with no buildings or structures being erected within such easements, and further dedicate to public use all those parts or portions of said tract of land designated as streets, the same to be used as public thoroughfares. We also dedicate and grant to Weber County all these parts or portions of said tract designated as public pathways, the sum to be used for pedestrian trails and public use as may be authorized by Weber County

Signed this ___ Day of ___, 2022.

- Lync Construction, LLC -

Pat Burns - Owner

ACKNOWLEDGMENT

State of Utah
County of } ss

The foregoing instrument was acknowledged before me this ___ day of ___ 2022 by Pat Burns - Lync Construction LLC

Residing At: A Notary Public commissioned in Utah

Commission Number: _____
Commission Expires: _____
Print Name

Legend

- Monument to be set
- Found Centerline Monument (Rad.) Radial Line (N/R) Non-Radial Line PUE Public Utility Easement PU&DE Public Utility & Drainage Easement
- Fence
- Buildable Area
- Pathway
- Easement
- Buildable area
- Existing Boundary
- Set Hub & Tack
- A will be set Nail in Curb
- Extension of Property
- Set 5/8" x 24" Long Rebar & Cap w/ Lathe

NOTES:

- A 10' wide front yard Public Utility and Drainage Easement as indicated by dashed lines, except as otherwise shown.
- Subdivision Area Information
Total Area 997,824.01 sq.ft.
Right of Way Area 122,891.41 sq.ft.
Lot Area 884,932.60 sq.ft.
- Lot 209 is not buildable until the pond is relocated and the Storm drain outfall is determined
- Agriculture is the preferred use in the agriculture zones. Agricultural operations as specified in the Land Use Code for a particular zone are permitted at any time including the operation of farm machinery and no allowed agricultural use shall be subject to restrictions on the basis that it interferes with activities of future residents of this subdivision.
- Home Owners will be responsible for their own detention basin on lots 201-209 & 222-224. A storm water maintenance agreement will be required for each lot.
- This subdivision was allowed flexible lot area and width in exchange for superior street connectivity. A subdivision amendment within any part of the overall subdivision boundary shall comply with Section 106-2-4.3 of the Weber County Code.

Sheet 1 of 1

WEBER COUNTY RECORDER

ENTRY NO. _____ FEE PAID _____
FILED FOR RECORD AND RECORDED _____ AT _____
IN BOOK _____ OF OFFICIAL RECORDS, PAGE _____ RECORDED FOR _____

WEBER COUNTY RECORDER

BY: _____ DEPUTY

ENGINEER:
Great Basin Engineering North
c/o Andy Hubbard, PLS.
Andy@greatbasineng.com
5746 South 1475 East, Suite 200
Ogden, Utah 84405
(801) 394-4515

DEVELOPER:
Lync Construction, LLC
1407 North Mountain Road
Ogden, Utah
(801) 710-2234

NOT FOR RECORDING

Southwest Corner of Section 21, T6N, R2W, SLB&M (Found Section Monument in good condition)

West Quarter corner of Section 21, T6N, R2W, SLB&M (Found Section Monument in good condition)

Smart Fields Phase 2

A part of the Southwest Quarter of Section 21, T6N, R2W, SLB&M, U.S. Survey
Weber County, Utah
February 2022

* See All Sheets*

NOTES

1. All construction shall conform to Weber County standards and specifications.
2. Underground utility piping materials will meet or exceed Weber County Standards.
3. Culinary water services will be 1" CTS SDR9 HDPE to be centered on the frontage and extended 10' beyond the right of way line.
4. 4" Sanitary sewer laterals to be constructed 10' down slope from the center of the lot and extended 10' beyond the right of way line.
5. All utility trenches within the Street right of way shall have a County approved imported granular backfill.
6. Thrust block all water line fittings.
7. All inlet grates shall be bicycle safe.
8. All fire hydrants and access roads shall be installed prior to any construction of any buildings.
9. All fire hydrants shall be placed with 4 1/2 inch connections facing the point of access for the Fire Department Apparatus.
10. Prior to the beginning of construction of any buildings, a fire flow test of new hydrants shall be conducted to verify the actual fire flow for this project. The Fire Prevention Division shall witness this test and shall be notified a minimum of 48 hours prior to the test.
11. Curb & gutter will be set to ensure a 1.5% minimum/3.0% Maximum cross slope from edge of existing asphalt along 4300 West Street. Contractor to verify prior to construction of curb.
12. An excavation permit is required for all work done within the existing Right of Way.
13. A Storm Water Construction Activity Permit is required for any construction that disturbs more than 5000 Sq. Ft. or 200 Cubic Yards.
14. All improvements need to be either installed or escrowed prior to recording of the subdivision.
15. If construction activity will disturb more than an acre then a State SWPPP will be required. This includes the construction of the homes etc. on each lot.
16. Roadways and signage shall comply with appendix D of the 2015 International Fire Code as adopted by Weber Fire District.
17. Construct ADA Ramps with Truncated Domes with detectable warning systems cast in place, gray in color per APWA Plan 235.1.
18. All culinary water facilities shall meet the requirements of the Taylor-West Weber Water Improvement District. Standard Details and Construction Specifications are available upon request to Taylorwestweberwater@msn.com or 801-731-1668. The District shall be notified at least 24 hours prior to and preconstruction meeting or construction activity.
19. All Secondary Water facilities and infrastructure to meet Hooper Irrigation District Standards and Specifications

GENERAL UTILITY NOTES:

1. Coordinate all utility connections to building with plumbing plans and building contractor.
2. Verify depth and location of all existing utilities prior to constructing any new utility lines. Notify Civil Engineer of any discrepancies or conflicts prior to any connections being made.
3. All catch basin and inlet box grates are to be bicycle proof.
4. All inlet boxes located in curb and gutter are to be placed parallel to the curb and gutter and set under the frame and grate. Improperly placed boxes will be removed and replaced at no additional cost to the owner. Precast or cast in place boxes are acceptable.
5. Refer to the site electrical plan for details and locations of electrical lines, transformers and light poles.
6. Gas lines, telephone lines, and cable TV lines are not a part of these plans unless otherwise noted.
7. Water meters are to be installed per water district standards and specifications. It will be the contractor's responsibility to install all items required.
8. Water lines, valves, fire hydrants, fittings etc. are to be constructed as shown. Contractor is responsible to construct any vertical adjustments necessary to clear sewer, storm drain or other utilities as necessary including valve boxes and hydrant spools to proper grade.
9. Field verify all existing and/or proposed Roof Drain/Roof Drain down spout connections to Storm Water System with Civil, Plumbing & Architectural plans. Notify Engineer of any discrepancies.
10. All gravity flow utility lines shall be installed prior to any pressurized utilities unless written permission is obtained from the engineer of record before construction begins.

UTILITY PIPING MATERIALS:

All piping to be installed per manufacturers recommendations. Refer to project specifications for more detailed information regarding materials, installation, etc.

CULINARY SERVICE LATERALS

1. 1" to 2" diameter pipe - AWWA C901 HDPE CTS SDR9
2. Over 2" diameter pipe - AWWA C-900 DR18 pipe

WATER MAIN LINES AND FIRE LINES

1. Pipe material as shown on utility plan view or to meet County standards.

SANITARY SEWER LINES

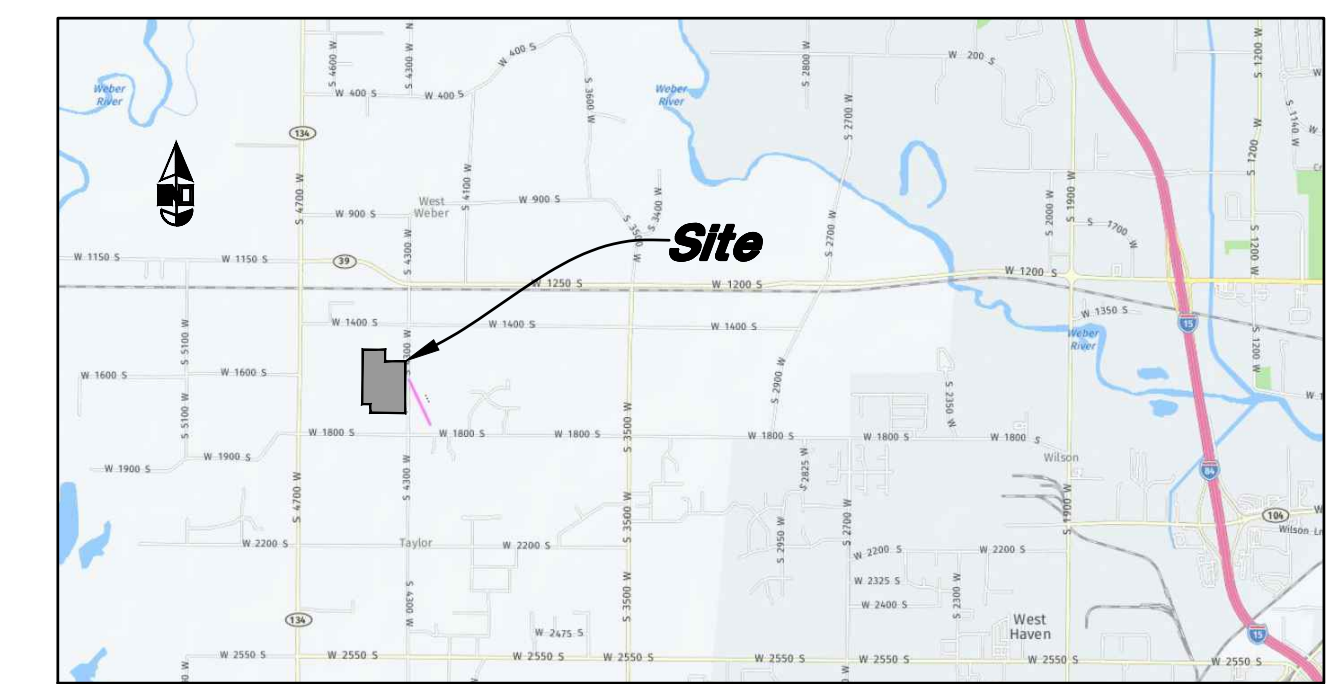
1. All sewer piping to be Polyvinyl Chloride (PVC) sewer pipe, ASTM D 3034, Type PSM, SDR 35

STORM DRAIN LINES

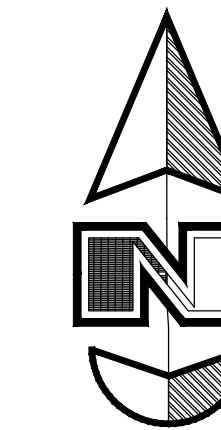
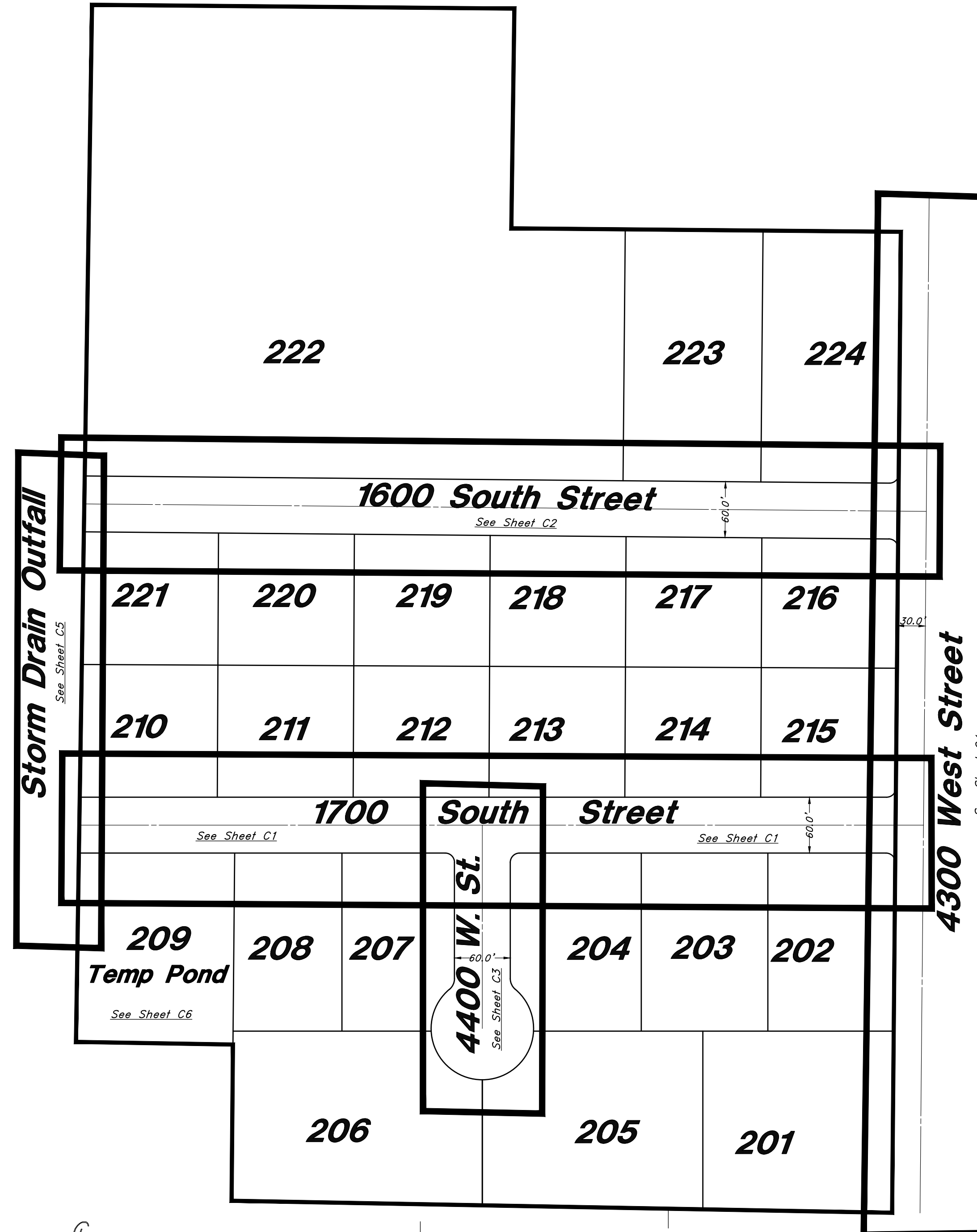
1. 10" pipes or smaller - Polyvinyl Chloride (PVC) sewer pipe, ASTM D3034, Type PSM, SDR 35
2. 12" to 21" pipes - Reinforced Concrete Pipe, ASTM C14, Class III up to 13' of cover. For greater than 13' feet of cover, use reinforced concrete pipe and classes listed below.
3. 24" pipes or larger - Reinforced Concrete Pipe, ASTM C76, Class III up to 13' of cover, Class IV for 13' to 21' of cover, Class V for 21' to 32' of cover, and Special Design for cover greater than 32 feet.

SECONDARY WATER MAIN LINES

1. C-900 DR-18 Pipe, Purple in Color



VICINITY MAP
Not to Scale



- NOT TO SCALE -

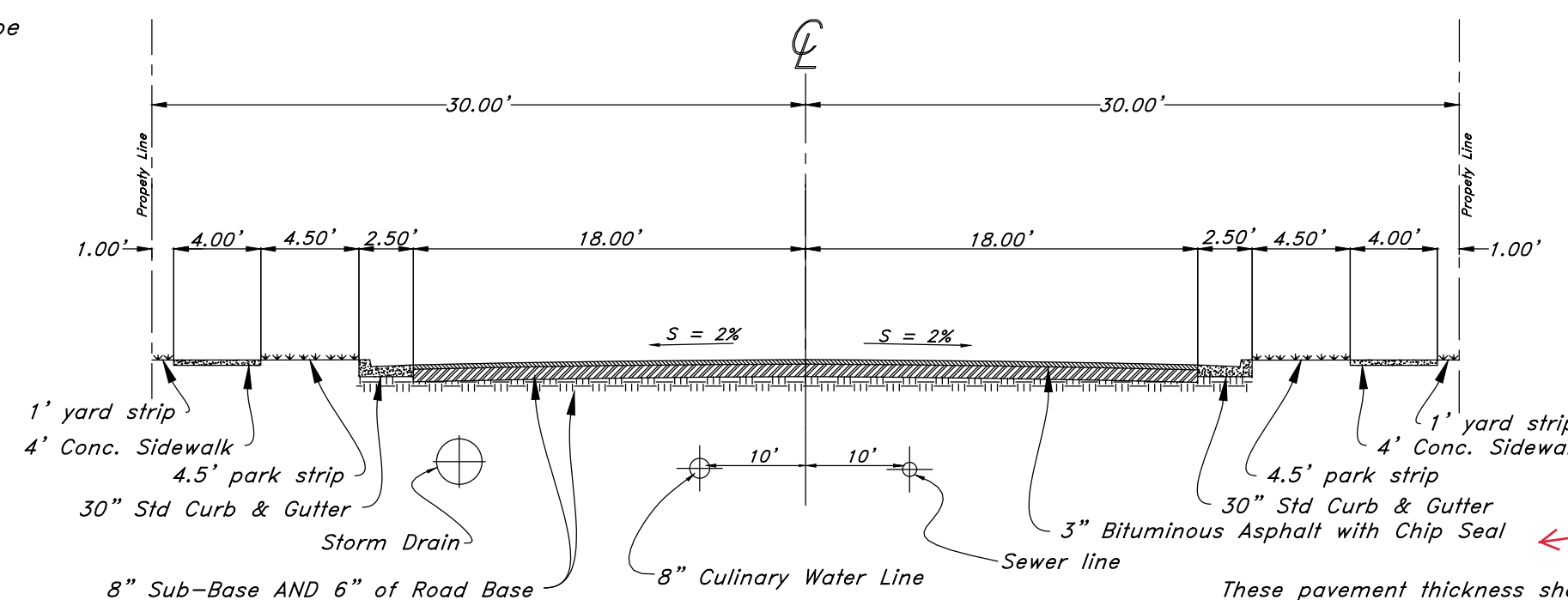
Legend

(Note: All items may not appear on drawing)

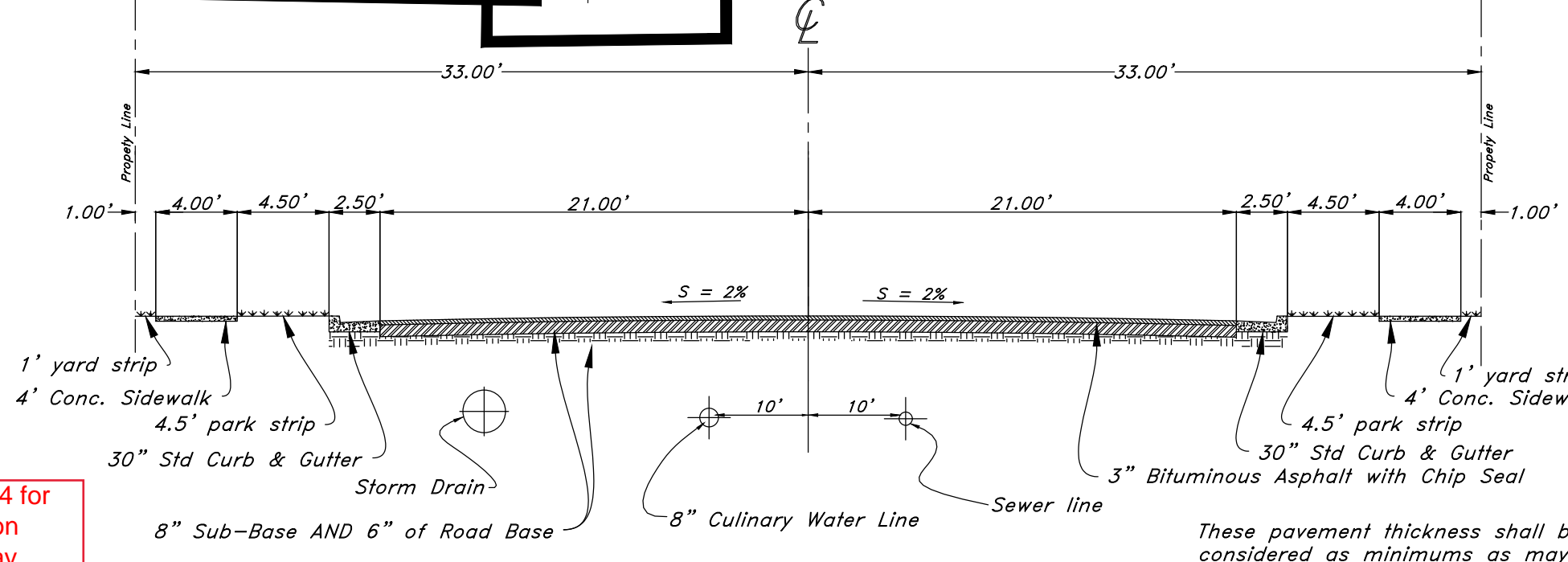
- San. Sewer Manhole
- Water Manhole
- Storm Drain Manhole
- Cleanout
- Electrical Manhole
- Catch Basins
- Exist. Fire Hydrant
- Fire Hydrant
- Exist. Water Valve
- Water Valve
- Sanitary Sewer
- Culinary Water
- Gas Line
- Irrigation Line
- Storm Drain
- Telephone Line
- Secondary Waterline
- Power Line
- Fire Line
- Land Drain
- Power pole
- Power pole w/guy
- Light Pole
- Fence
- Flowline of ditch
- Overhead Power Line
- Corrugated Metal Pipe
- Concrete Pipe
- Reinforced Concrete Pipe
- Ductile Iron
- Polyvinyl Chloride
- Top of Asphalt
- Edge of Asphalt
- Centerline
- Flowline
- Finish Floor
- Top of Curb
- Top of Wall
- Top of Walk
- Top of Concrete
- Natural Ground
- Finish Grade
- Match Existing
- ME
- Fire Department Connection
- Finish Contour
- Exist. Contour
- Finish Grade
- Exist. Grade
- Ridge Line
- Direction of Flow
- Existing Asphalt
- New Asphalt
- Existing Concrete
- New Concrete

TABLE OF CONTENTS

- C0. Cover Sheet
- C1. 1700 South Street
- C2. 1600 South Street
- C3. 4400 West Street
- C4. 4300 West Street
- C5. Storm Drain Outfall
- C6. Pond



Standard 60' Roadway Section



66' Wide Roadway Section

These pavement thickness shall be considered as minimums as may be increased by the County Engineer when the subgrade C.B.R. is less than 10 or when a greater depth is necessary to provide sufficient sustainability. Developer may submit and alternative pavement design based on a soils analysis for approval by the County Engineer. Compaction test on both sub-base and base courses will be required.

These pavement thickness shall be considered as minimums as may be increased by the County Engineer when the subgrade C.B.R. is less than 10 or when a greater depth is necessary to provide sufficient sustainability. Developer may submit and alternative pavement design based on a soils analysis for approval by the County Engineer. Compaction test on both sub-base and base courses will be required.



PRIVATE ENGINEER'S NOTICE TO CONTRACTORS
The Contractor agrees that he shall assume sole and complete responsibility for job site conditions during the course of construction of this project, including safety of all persons and property; that this requirement shall apply continuously and not be limited to normal working hours; and that the contractor shall defend, indemnify, and hold the owner and the engineer harmless from any and all liability, real or alleged, in connection with the performance of work on this project, excepting for liability arising from the sole negligence of the owner or the engineer.

CAUTION NOTICE TO CONTRACTOR
The contractor is specifically cautioned that the location and/or elevation of existing utilities as shown on these plans are based on records of the various utility companies and, where possible, measurements taken in the field. The information is not to be relied on as being exact or complete. The contractor must call the appropriate utility company at least 48 hours before any excavation to request exact field location of utilities. It shall be the responsibility of the contractor to relocate all existing utilities which conflict with the proposed improvements shown on the plans.

NOT FOR CONSTRUCTION

NO.	DATE	REV.	DESCRIPTION

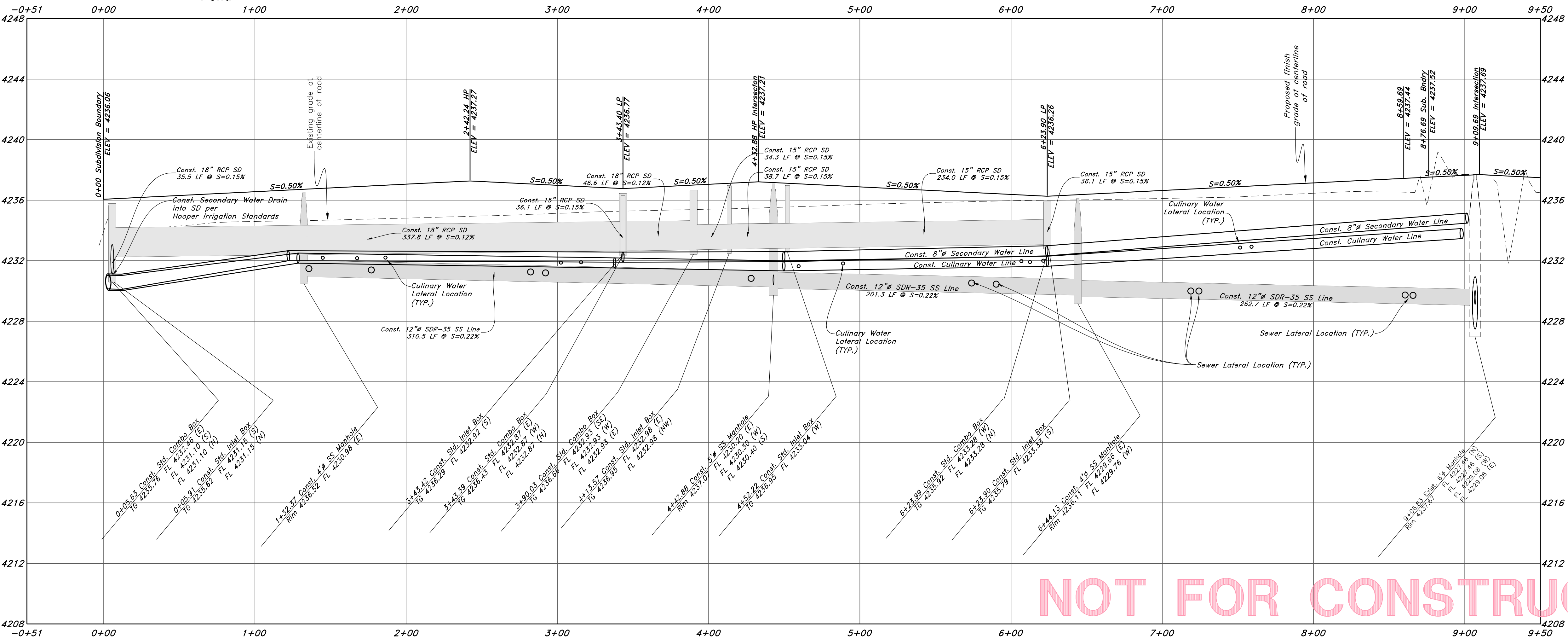
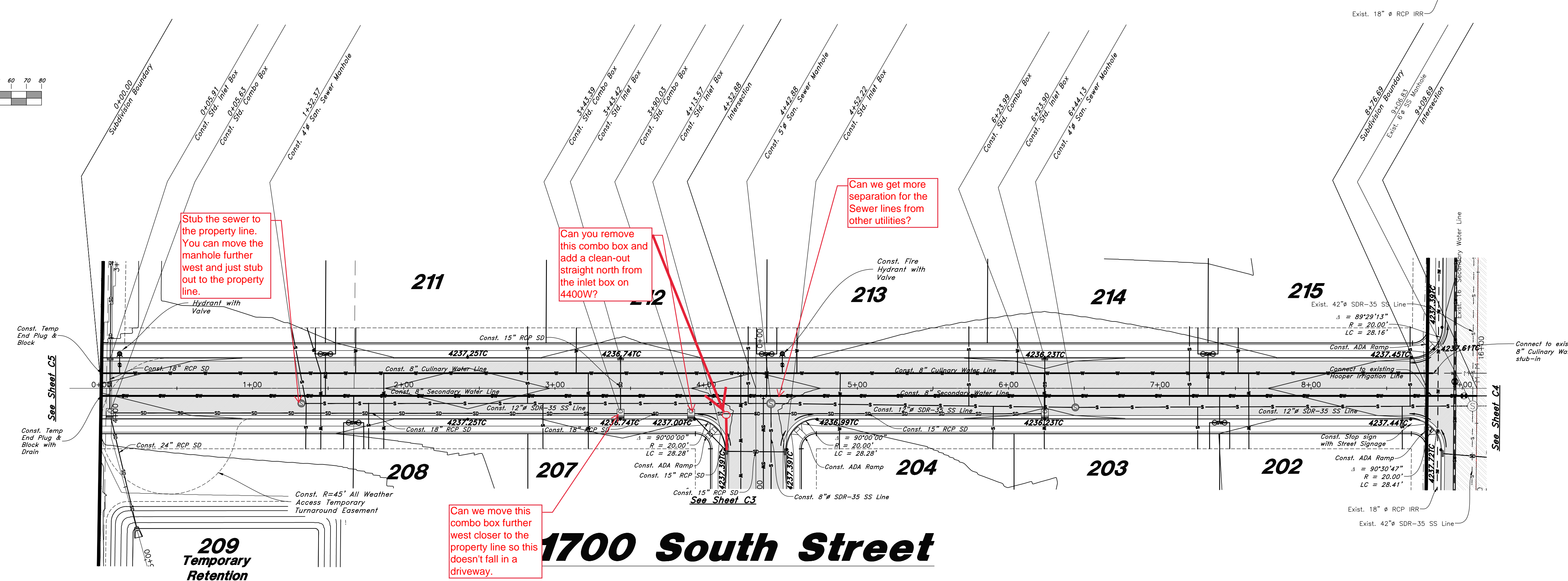
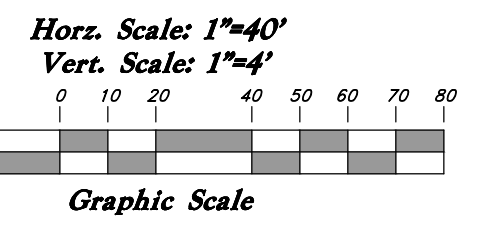
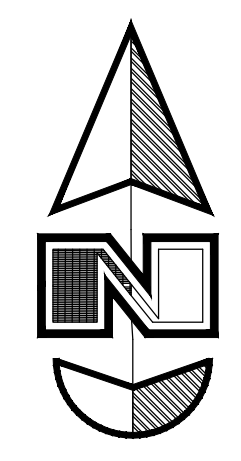
GREAT BASIN ENGINEERING
5746 SOUTH 1475 EAST OGDEN, UTAH 84403
MAIN (801)394-4515 S.L.L.C. (801)521-0222 FAX (801)392-7544
WWW.GREATBASINENGINEERING.COM

Cover Sheet
Smart Fields Phase 2
Approx. 1800 South 4300 West Street
A part of Section 21, T6N, R2W, SLB&M, U.S. Survey

Legend

(Note: All items may not appear on drawing)

- San. Sewer Manhole
- Water Manhole
- Storm Drain Manhole
- Electrical Manhole
- Catch Basins
- Exist. Fire Hydrant
- Fire Hydrant
- Exist. Water Valve
- Water Valve
- Sanitary Sewer
- Culinary Water
- Gas Line
- Irrigation Line
- Storm Drain
- Telephone Line
- Secondary Waterline
- Power Line
- Fire Line
- Land Drain
- Power pole w/guy
- Light Pole
- Fence
- Flowline of ditch
- Overhead Power line
- Corrugated Metal Pipe
- Concrete Pipe
- Reinforced Concrete Pipe
- Ductile Iron
- Polyvinyl Chloride
- Top of Asphalt
- Edge of Asphalt
- Centerline
- Flowline
- Finish Floor
- Top of Wall
- Top of Walk
- Top of Concrete
- Natural Ground
- Finish Contour
- Exist. Contour
- Finish Grade
- Exist. Grade
- Ridge Line
- Direction of Flow
- Existing Asphalt
- New Asphalt
- Heavy Duty Asphalt
- Concrete
- Open Face
- Curb & Gutter



NOT FOR CONSTRUCTION

GREAT BASIN ENGINEERING

5746 SOUTH 1475 EAST OGDEN, UTAH 84403
MAIN (801)394-4515 S.L.L.C. (801)521-0222 FAX (801)392-7544
WWW.GREATBASINENGINEERING.COM

Plan & Profile

Smart Fields Phase 2

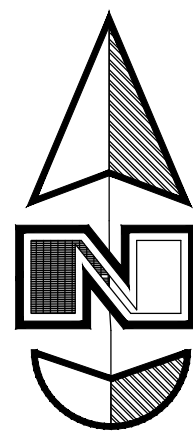
Approx. 1800 South, 4300 West Street
Weber County, Utah
A part of Section 21, T6N, R2W, SLB&M, U.S. Survey

February, 2022

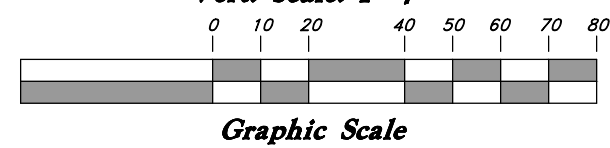
SHEET NO.

C1

21N700



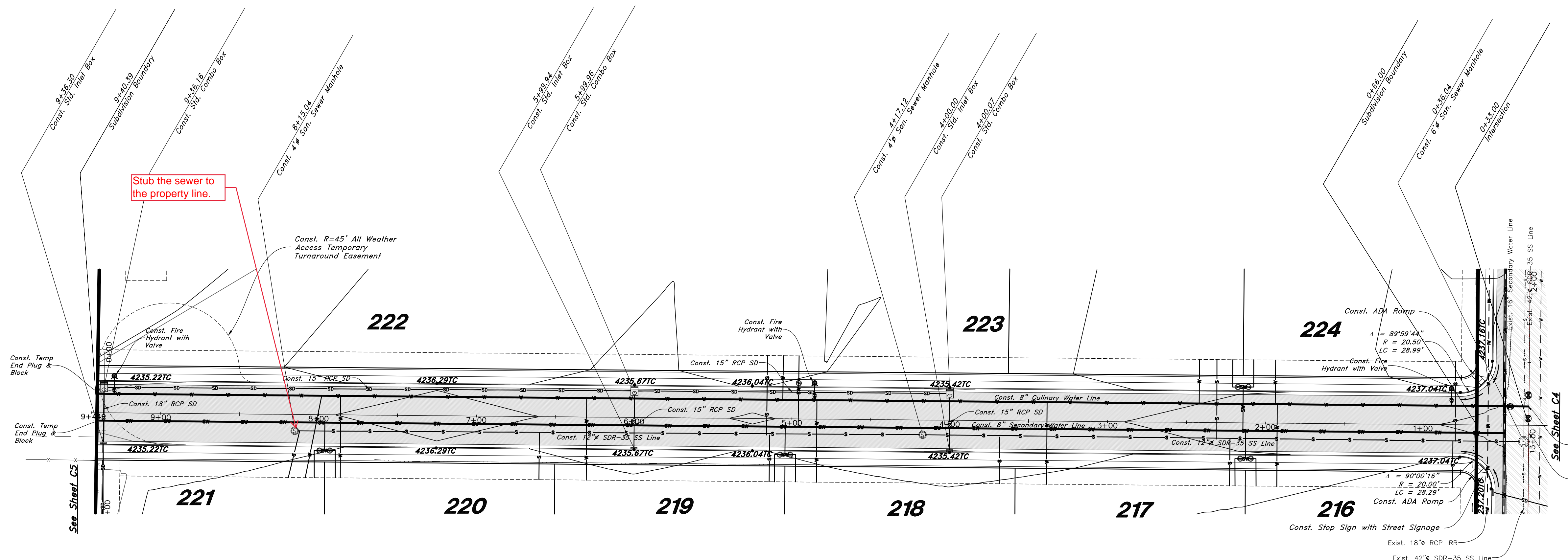
Horz. Scale: 1"=40'
Vert. Scale: 1"=4'



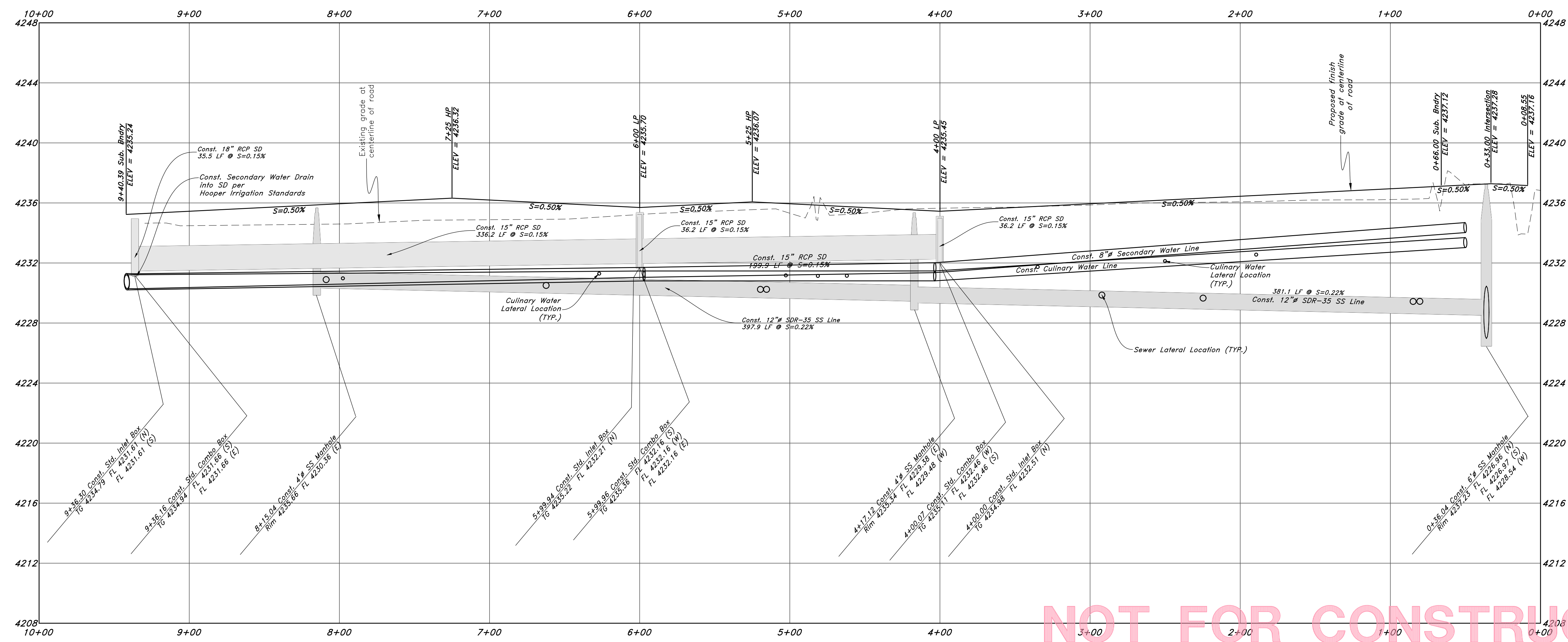
Legend

(Note: All items may not appear on drawing)

- San. Sewer Manhole
- Water Manhole
- Storm Drain Manhole
- Electrical Manhole
- Catch Basins
- Exist. Fire Hydrant
- Fire Hydrant
- Exist. Water Valve
- Water Valve
- Sanitary Sewer
- Culinary Water
- Gas Line
- Irrigation Line
- Storm Drain
- Telephone Line
- Secondary Waterline
- Power Line
- Fire Line
- Land Drain
- Power pole w/guy
- Light Pole
- Fence
- Flowline of ditch
- Overhead Power line
- Corrugated Metal Pipe
- Concrete Pipe
- Reinforced Concrete Pipe
- Ductile Iron
- Polyvinyl Chloride
- Top of Asphalt
- Edge of Asphalt
- Centerline
- Flowline
- Finish Floor
- Top of Curb
- Top of Wall
- Top of Walk
- Top of Concrete
- Natural Ground
- Finish Contour
- Exist. Contour
- Finish Grade
- Exist. Grade
- Ridge Line
- Direction of Flow
- Existing Asphalt
- New Asphalt
- Heavy Duty Asphalt
- Concrete
- Open Face Curb & Gutter



1600 South Street



NOT FOR CONSTRUCTION

GREAT BASIN ENGINEERING

5746 SOUTH 1475 EAST OGDEN, UTAH 84403
 MAIN (801)394-4515 S.L.L.C. (801)521-0222 FAX (801)392-7544
 WWW.GREATBASINENGINEERING.COM

Plan & Profile

Smart Fields Phase 2
 Approx. 1800 South, 4300 West Street
 Approx. Weber County, Utah
 A part of Section 21, T6N, R2W, SLB&M, U.S. Survey

February, 2022

SHEET NO.

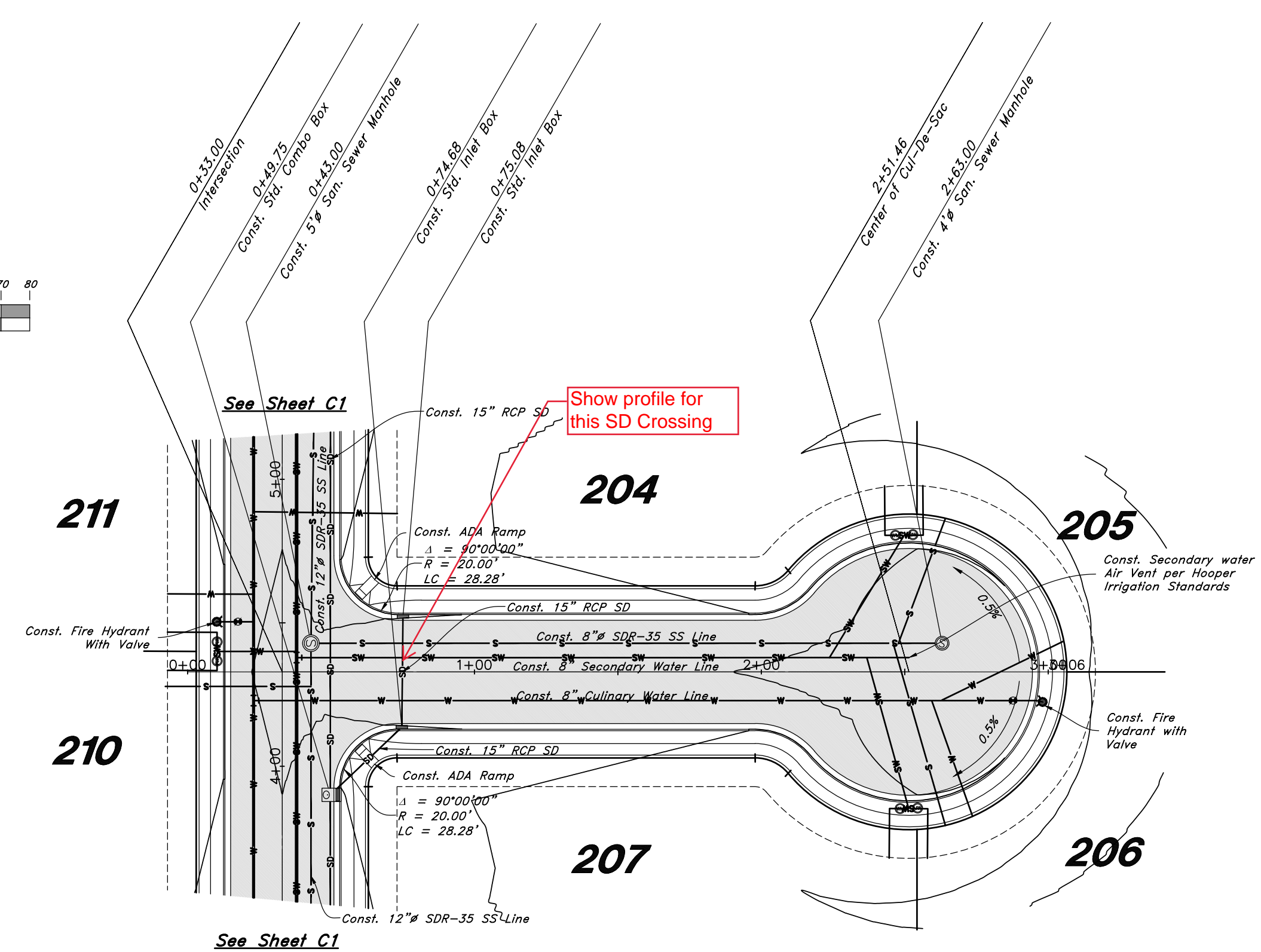
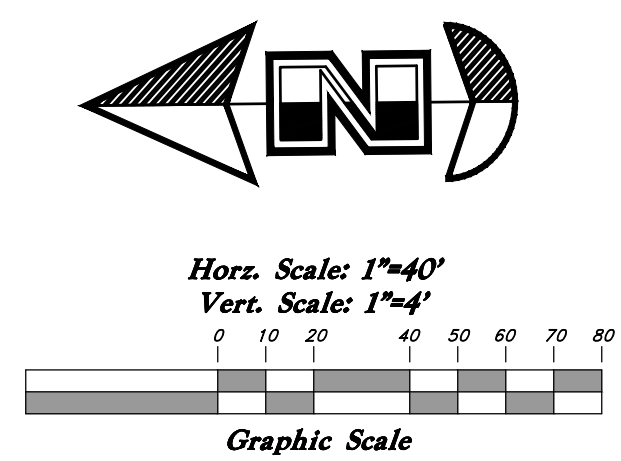
C2

21N700

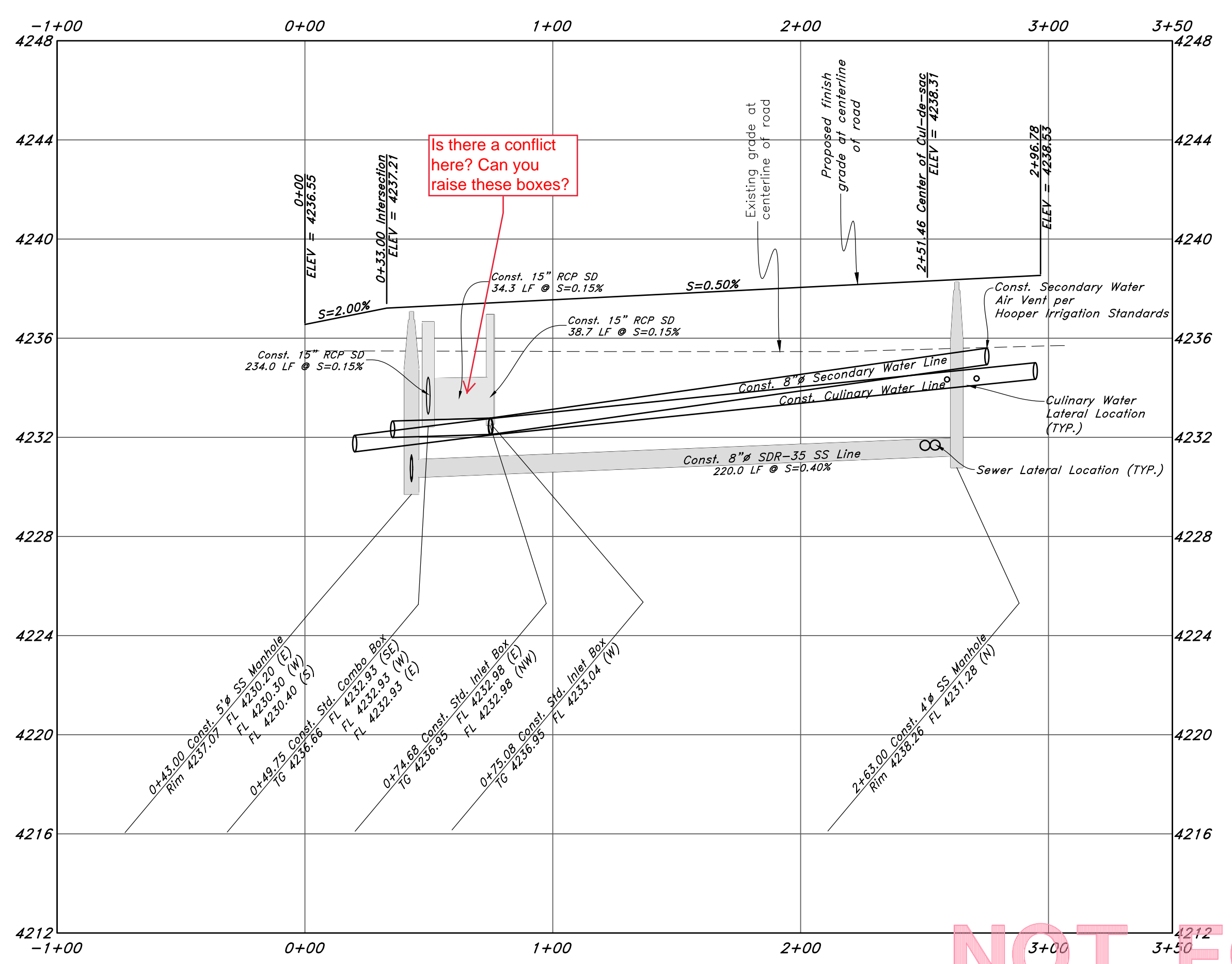
Legend

(Note: All items may not appear on drawing)

- San. Sewer Manhole
- Water Manhole
- Storm Drain Manhole
- Electrical Manhole
- Catch Basins
- Exist. Fire Hydrant
- Fire Hydrant
- Exist. Water Valve
- Water Valve
- Sanitary Sewer
- Culinary Water
- Gas Line
- Irrigation Line
- Storm Drain
- Telephone Line
- Secondary Waterline
- Power Line
- Fire Line
- Land Drain
- Power pole w/guy
- Light Pole
- Fence
- Flowline of ditch
- Overhead Power line
- Corrugated Metal Pipe
- Concrete Pipe
- Reinforced Concrete Pipe
- Ductile Iron
- Flowline
- Top of Asphalt
- EA
- CL
- FL
- FF
- TC
- TW
- TW
- TCN
- NG
- Finish Floor
- Top of Wall
- Top of Walk
- Top of Concrete
- Natural Ground
- Finish Contour
- Exist. Contour
- Finish Grade
- Exist. Grade
- Ridge Line
- Direction of Flow
- Existing Asphalt
- New Asphalt
- Heavy Duty Asphalt
- Concrete
- Open Face
- Curb & Gutter



4400 West Street



NOT FOR CONSTRUCTION

NO.	DESCRIPTION	DATE	REV.

GREAT BASIN ENGINEERING

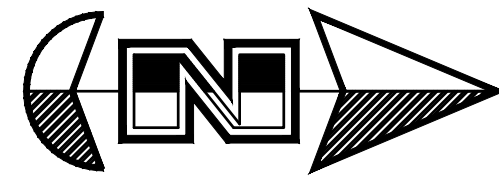
5746 SOUTH 1475 EAST OGDEN, UTAH 84403
 MAIN (801)394-4515 S.L.C. (801)521-0222 FAX (801)392-7544
 WWW.GREATBASINENGINEERING.COM

Plan & Profile

Smart Fields Phase 2

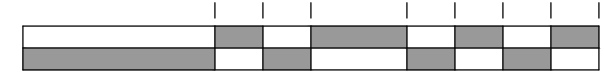
Approx. 1800 South, 4300 West Street
 Weber County, Utah
 A part of Section 21, T6N, R2W, SLB&M, U.S. Survey

W:\21N700 - Smart Fields\DWG\21N700 - BM.dwg, 2/18/2022 8:47:33 AM, JamesR, 1:1



Horz. Scale: 1"=40'

Vert. Scale: 1"=4'



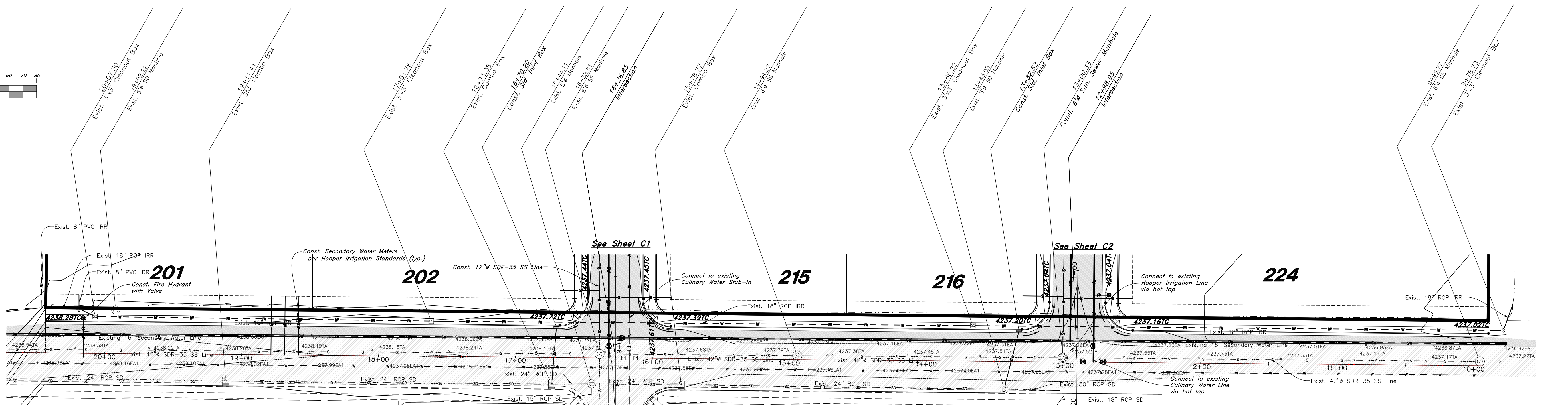
Graphic Scale

Legend

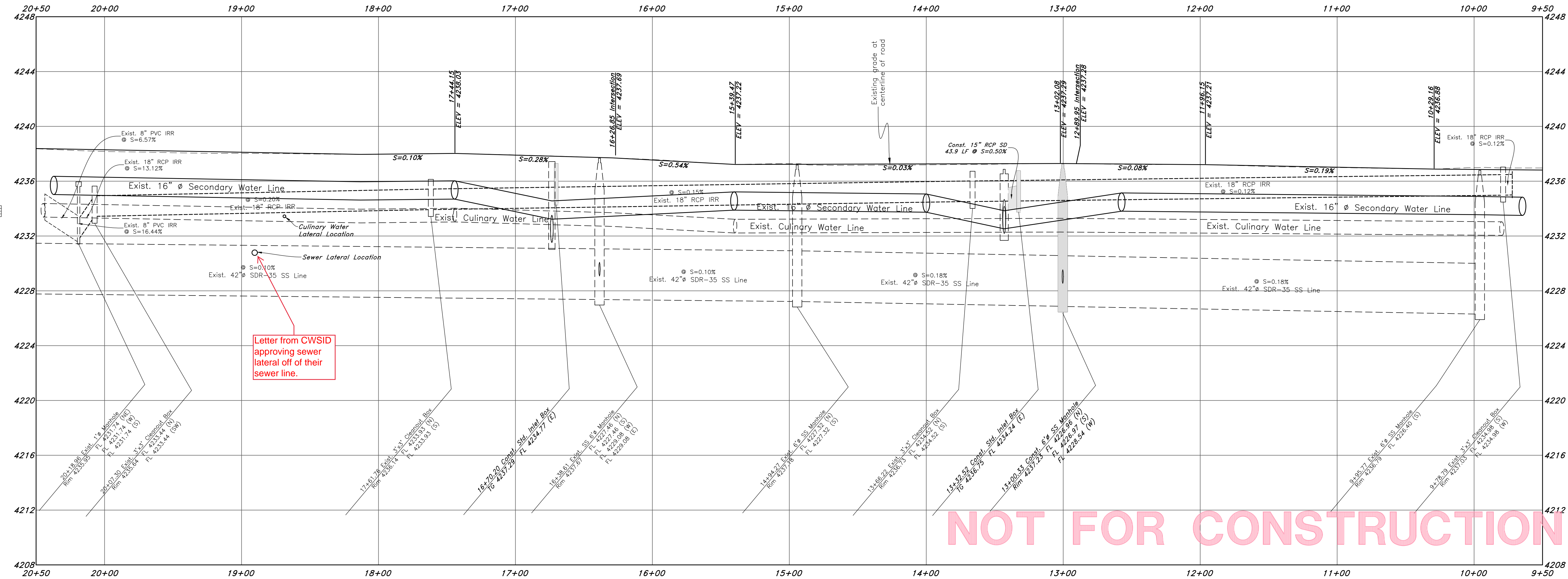
(Note: All items may not appear on drawing)

- San. Sewer Manhole
- Water Manhole
- Storm Drain Manhole
- Electrical Manhole
- Catch Basins
- Exist. Fire Hydrant
- Fire Hydrant
- Exist. Water Valve
- Water Valve
- Sanitary Sewer
- Culinary Water
- Gas Line
- Irrigation Line
- Storm Drain
- Telephone Line
- Secondary Waterline
- Power Line
- Fire Line
- Land Drain
- Power pole w/guy
- Power pole
- Light Pole
- Fence
- Flowline of ditch
- Overhead Power line
- Corrugated Metal Pipe
- Concrete Pipe
- Reinforced Concrete Pipe
- Ductile Iron
- Polyvinyl Chloride
- Top of Asphalt
- Edge of Asphalt
- Centerline
- Flowline
- Finish Floor
- Top of Curb
- Top of Wall
- Top of Walk
- Top of Concrete
- Natural Ground
- Finish Contour
- Exist. Contour
- Finish Grade
- Exist. Grade
- Ridge Line
- Direction of Flow
- Existing Asphalt
- New Asphalt
- Heavy Duty Asphalt
- Concrete
- Open Face
- Curb & Gutter

Show existing High Pressure Gas line in 4300 west



4300 West Street



Letter from CWSID approving sewer lateral off of their sewer line.

NOT FOR CONSTRUCTION

REV	DATE	DESCRIPTION

GREAT BASIN ENGINEERING

5746 SOUTH 1475 EAST, SUITE 100, SALT LAKE CITY, UTAH 84143
 WWW.GREATBASINENGINEERING.COM

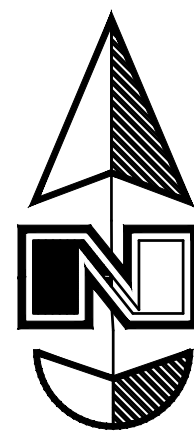
Plan & Profile

Smart Fields Phase 2

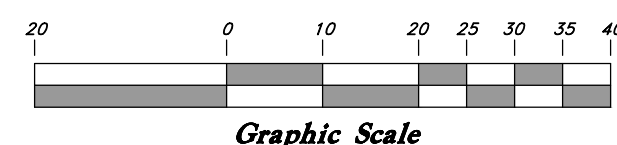
Approx. 1800 South 4300 West Street
 Weber County, Utah

A part of Section 21, T6N, R2W, SLB&M, U.S. Survey

Retention Pond Exhibit for Smart Fields



Scale: 1" = 20'

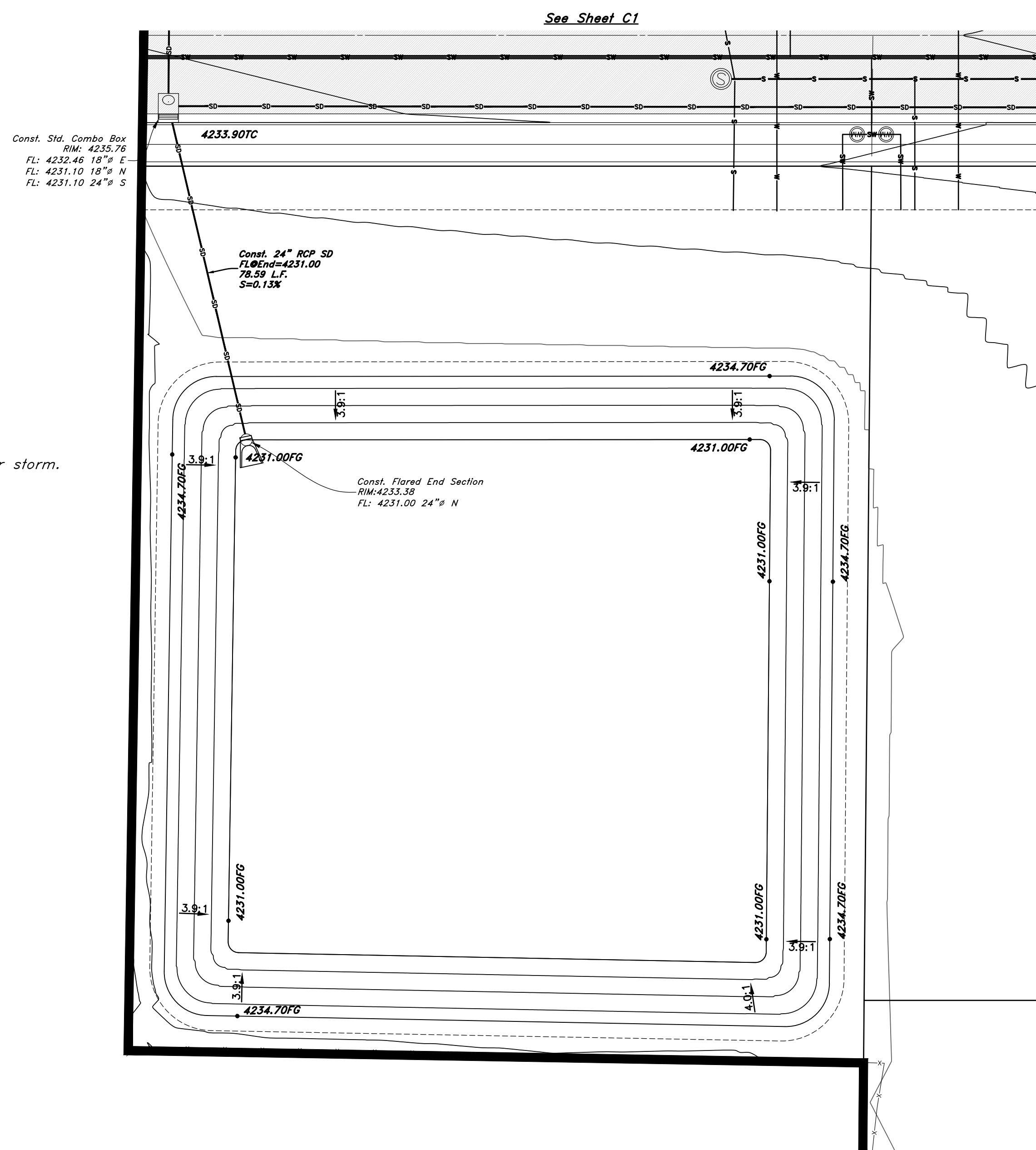


Legend

(Note: All items may not appear on drawing)

San. Sewer Manhole	
Water Manhole	
Storm Drain Manhole	
Electrical Manhole	
Catch Basins	
Exist. Fire Hydrant	
Fire Hydrant	
Exist. Water Valve	
Water Valve	
Sanitary Sewer	
Culinary Water	
Gas Line	
Irrigation Line	
Storm Drain	
Telephone Line	
Secondary Waterline	
Power Line	
Fire Line	
Land Drain	
Power pole	
Power pole w/guy	
Light Pole	
Fence	
Flowline of ditch	
Overhead Power line	
Corrugated Metal Pipe	
Concrete Pipe	
Reinforced Concrete Pipe	
Ductile Iron	
Polyvinyl Chloride	
Top of Asphalt	
Edge of Asphalt	
Centerline	
Flowline	
Finish Floor	
Top of Curb	
Top of Wall	
Top of Walk	
Top of Concrete	
Natural Ground	
Finish Contour	
Exist. Contour	
Finish Grade	
Exist. Grade	
Ridge Line	
Direction of Flow	
Existing Asphalt	
New Asphalt	
Heavy Duty Asphalt	
Concrete	
Open Face	
Curb & Gutter	

- POND NOTES:**
1. Pond Designed to accommodate the 100yr-24hr storm.
 2. Retention Pond Volume Required: 46,667 cf
 3. Retention Pond Volume Provided: 46,663 cf
 4. Excess Volume: 16cf
 5. Top of soil rim: 4234.70
 6. Top of water: 4233.70
 7. Freeboard: 12"
 8. Bottom of Pond 4231.00
 9. Maximum Pond Depth: 2.70'
 10. Pond Side slopes not to exceed 3:1
 11. Pond Will be Landscaped



Retention Pond

Is there an emergency overflow? Where will water go if it overflows?

NOT FOR CONSTRUCTION

ENGINEER:
Great Basin Engineering North
c/o Andy Hubbard, PLS.
andyh@greatbasineng.com
5745 South 1475 East Suite 200
Ogden, Utah 84405
(801) 394-4515

DEVELOPER:
Lync Construction, LLC
1407 North Mountain Road
Ogden, Utah
(801)-710-2234

REV	DATE	DESCRIPTION

GREAT BASIN ENGINEERING

5746 SOUTH 1475 EAST OGDEN, UTAH 84403
MAIN (801) 394-4515 S.L.C. (801) 521-0222 FAX (801) 392-7544
WWW.GREATBASINENGINEERING.COM

Pond Sheet
Smart Fields Phase 2
Approx. 1800 South 4300 West
Weber County, Utah
A part of Section 21, T6N, R2W, S6B&M, U.S. Survey

February 2022

SHEET NO.

C6

21N700