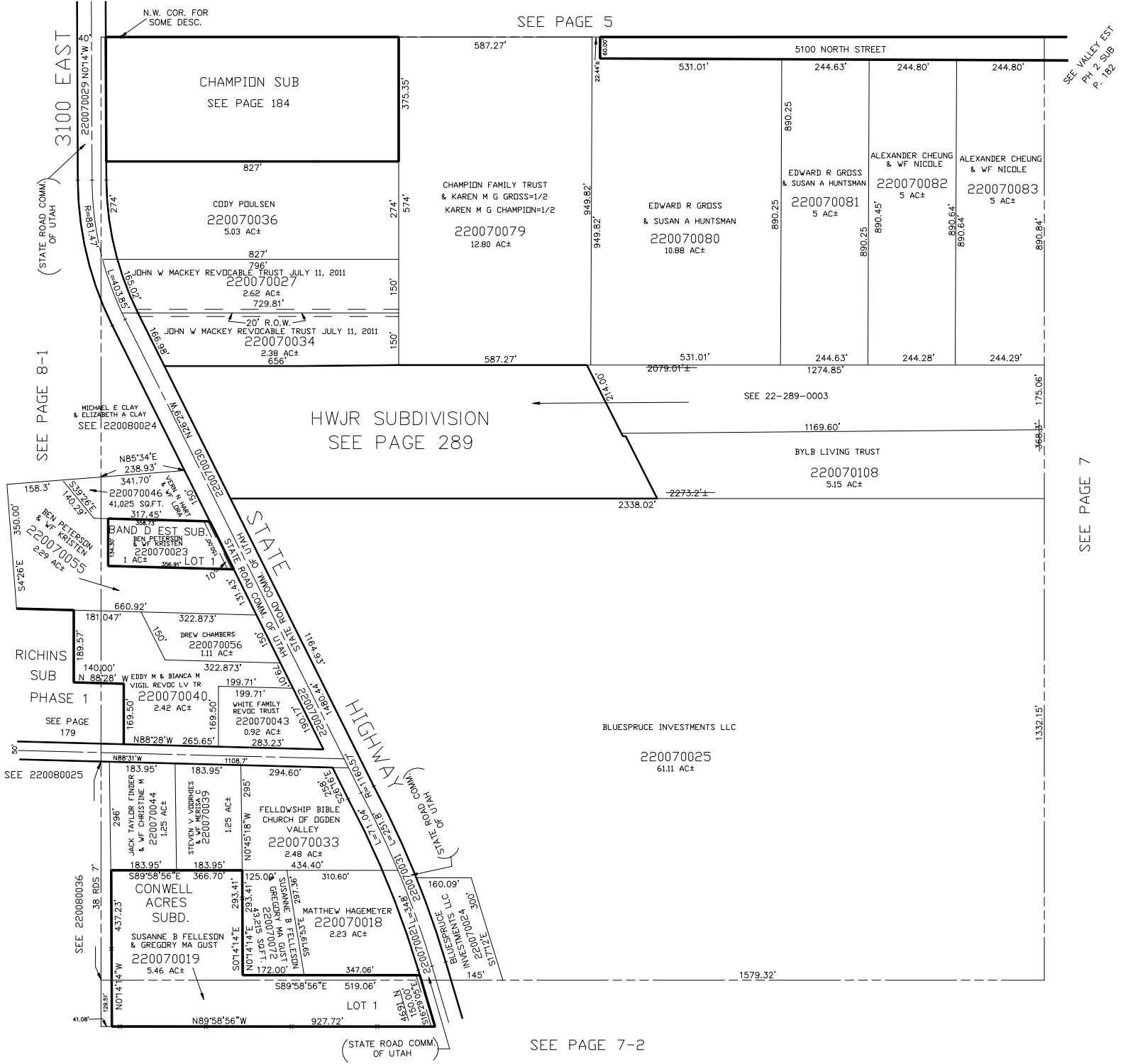


N.W. 1/4
SECTION 17, T. 7N., R.1E., S.L.B. & M.

IN WEBER COUNTY
SCALE 1" = 200'

TAXING UNIT: 36

SEE PAGE 5



SEE VALLEY EST
PH. & SUB
P. 182

SEE PAGE 7

3100 EAST
(STATE ROAD COMM. OF UTAH)

SEE PAGE 8-1

SEE PAGE 179

SEE 220080036

(STATE ROAD COMM. OF UTAH)

SEE PAGE 7-2

FOR TAX PURPOSES ONLY