

PART OF THE NW. 1/4, OF SECTION 29, T.6N., R.2W., S.L.B. & M.
JACQUELYN ESTATES CLUSTER SUB PH1

IN WEBER COUNTY

TAXING UNIT: 514

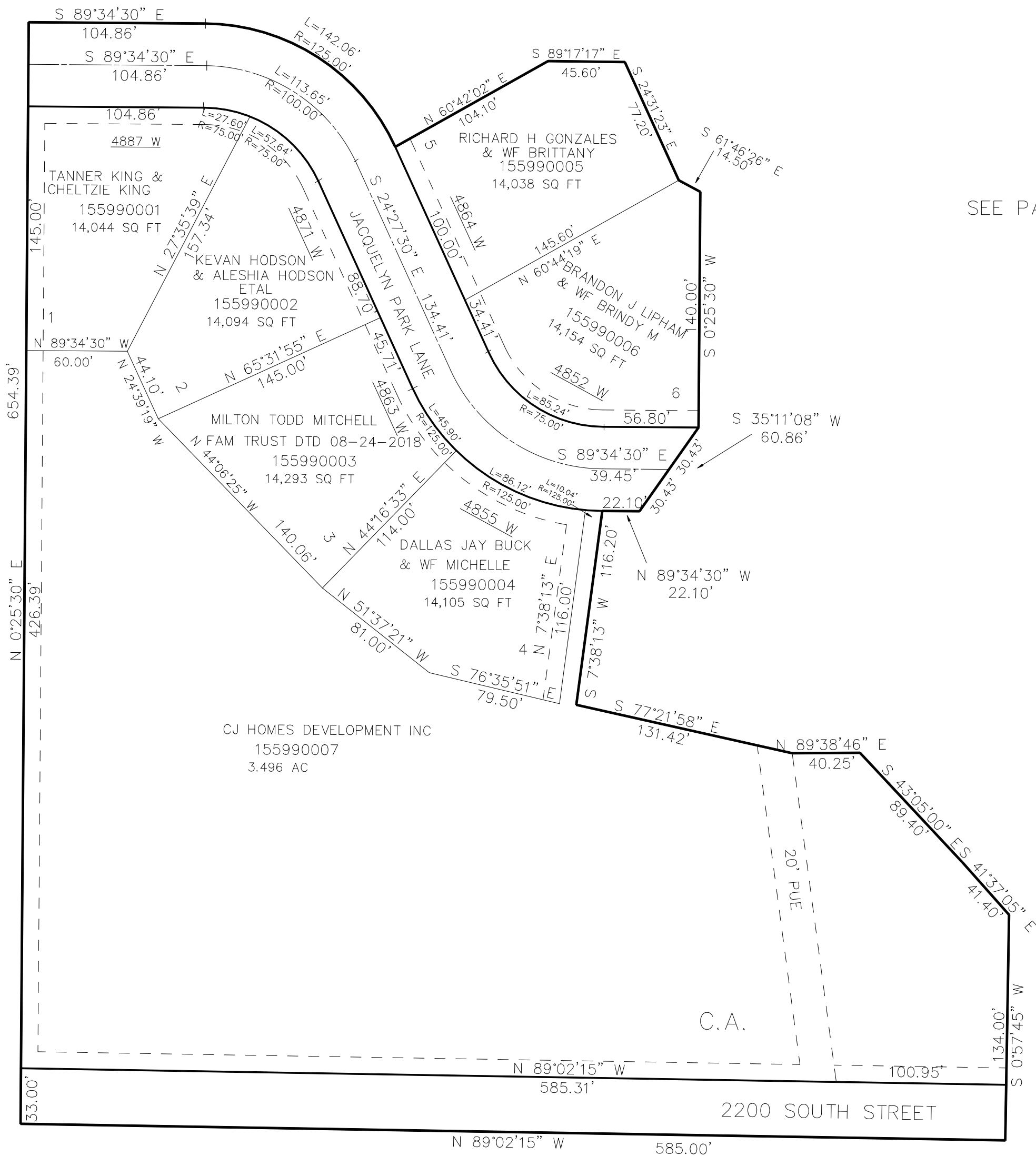
SCALE 1" = 60'

SEE PAGE 79-3

SEE PAGE 79-3

SEE PAGE 79-3

SEE PAGE 79-3



10' UTILITY & DRAINAGE EASEMENTS EACH
SIDE OF PROPERTY LINES AS INDICATED
BY DASHED LINES EXCEPT AS OTHERWISE
SHOWN.

FOR COMPLETE ENG DATA SEE
ORIGINAL DEDICATION PLAT IN
BOOK 79, PAGE 13 OF RECORDS.