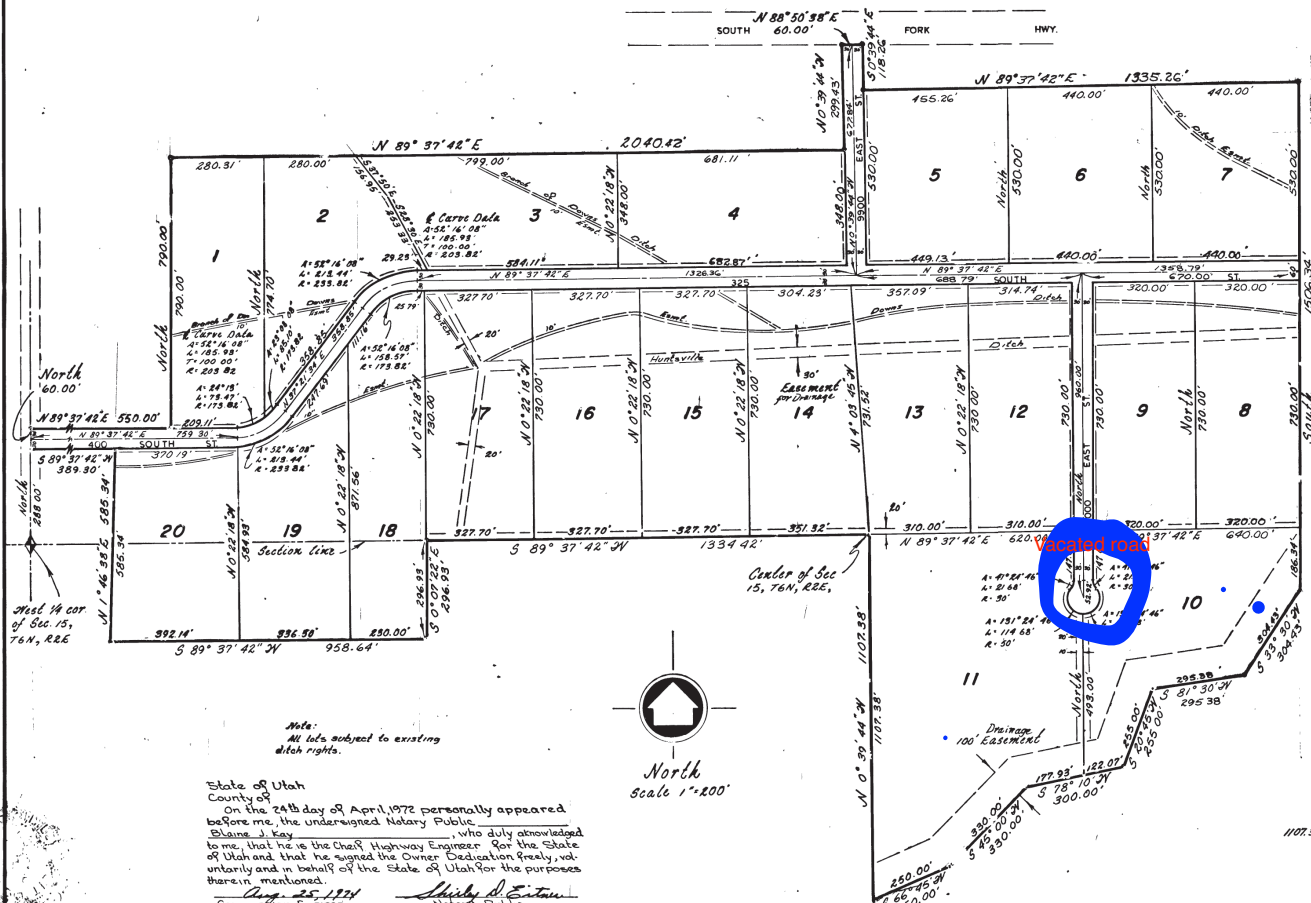


SOUTH FORK RANCHETTES SUBDIVISION

A PART OF SECTION 15, T6N, R2E, SLB&M, U.S. SURVEY
WEBER COUNTY, UTAH



Note: All lots subject to existing ditch rights.

State of Utah
County of Weber
On the 24th day of April, 1972 personally appeared before me, the undersigned Notary Public, Blaine J. Kay, who duly acknowledged to me, that he is the Chief Highway Engineer for the State of Utah and that he signed the Owner Dedication freely, voluntarily and in behalf of the State of Utah for the purposes therein mentioned.
August 25, 1974
Commission Expires

NOTE: 7' Utility and Drainage Easements each side of Property Line as indicated by dashed lines.
PREPARED BY:
GREAT BASIN ENGINEERING & SURVEYING INC.
CIVIL ENGINEERS LAND SURVEYORS
Ogden, Utah

WEBER COUNTY ATTORNEY
I have examined the proposed plat of South Fork Ranchettes Subdivision and in my opinion it conforms with the county Ordinance applicable thereto and now in force and effect.
Date: May 23, 1972
Robert L. Lawley
County Attorney

WEBER COUNTY ENGINEER
I hereby certify that I have carefully investigated the lines of Survey of the foregoing plat and legal description of the land embraced therein, and find them to be correct and to agree with the lines and monuments on record in this office.
Signed this 19 day of May, 1972
Fred W. Malone
Signature

WEBER COUNTY APPROVAL
This is to certify that this plat and dedication of this plat were duly approved and accepted by the Commission of Weber County, Utah this 23 day of May, 1972.
attest
Title
[Signature]
Chairman

SURVEYORS CERTIFICATE
I, Jay R. Anderson, a registered land surveyor in the State of Utah, do hereby certify that this plat of South Fork Ranchettes Subdivision in Weber County, Utah has been correctly drawn to the designated scale and is a true and correct representation of the following description of lands included in said subdivision, based on data compiled from records in the Weber County Recorder's Office, and of a survey made on the ground.

Signed this 24th day of August, 1971
J. R. Anderson
2430
License No. [Signature]
Signature
STATE OF UTAH
LAND SURVEYOR
No. 2430
WEBER COUNTY

OWNERS DEDICATION
We, the undersigned owners of the herein described tract of land, hereby set apart and subdivide the same into lots and streets as shown on this plat and name said tract South Fork Ranchettes Subdivision and hereby dedicate, grant and convey to Weber County, Utah, all those parts or portions of said tract of land designated as streets, the same to be used as public thoroughfares forever, and also dedicate to Weber County those certain strips as easements for public utility and drainage purposes as shown hereon, the same to be used for the installation, maintenance, and operation of public utility service lines and drainage as may be authorized by Weber County.
Signed this 24th day of August, 1971

Branco Land & Livestock, Inc.
Michael Ford President
George Popper Jr. Secretary
Blaine J. Kay
State Road Commissioner of Utah
ACKNOWLEDGEMENT

State of Utah
County of Weber
On the 24th day of August, 1971, personally appeared before me, the undersigned Notary Public, the signers of the above Owners Dedication, & in number, who duly acknowledged to me they signed it freely and voluntarily and for the purposes therein mentioned.
August 25, 1974
Commission Expires
Shirley D. Estman
Notary Public
State of Utah
County of Weber
On the 24th day of August, 1971, personally appeared before me, Michael Ford and George Popper Jr. and after being duly sworn acknowledged to me they are President and Secretary of said Corporation and that they signed the Owners Dedication freely, voluntarily and in behalf of said Corporation for the purposes therein mentioned.
August 25, 1974
Commission Expires
Shirley D. Estman
Notary Public

BOUNDARY DESCRIPTION
A part of Section 15, T6N, R2E, Salt Lake Base & Meridian, U.S. Survey beginning at a point which is North 228.00 ft. along the Section line from the West 1/4 corner of said Section 15, running thence North 60.00 ft., thence N 89° 37' 42" E 250.00 ft., thence North 70.00 ft., thence N 89° 37' 42" E 20.00 ft., thence N 0° 39' 44" W 299.43 ft., thence N 89° 37' 42" E 20.00 ft., thence N 0° 39' 44" W 110.26 ft., along an existing fence, thence N 89° 37' 42" E 1335.26 ft., thence N 0° 39' 44" W 100.34 ft. to the corner of the South Fork of the Ogden River, thence east course along the center of said South Fork as follows: S 89° 30' W 304.43 ft., S 81° 30' W 295.38 ft., S 20° 45' W 255.00 ft., S 78° 10' W 300.00 ft., S 45° 00' W 330.00 ft., S 66° 45' W 250.00 ft., thence N 0° 39' 44" W 299.43 ft., thence N 89° 37' 42" E 1335.26 ft. along the 1/4 Section line, thence S 07° 22' E 296.93 ft. along an existing fence, thence S 89° 37' 42" W 250.00 ft., thence N 1° 48' 38" E 389.50 ft. along an existing fence, thence S 89° 37' 42" W 389.50 ft. to the A.B.

571370 412.65
FILED AND RECORDED FOR
CANNON LAND TITLE COMPANY
8972 MAY 23 PM 2 57
IN BOOK 17 OF PLATS PAGE 40
RUTH EAMES OLSEN
WEBER COUNTY RECORDER
DEPUTY CLERK B. D. WALKER