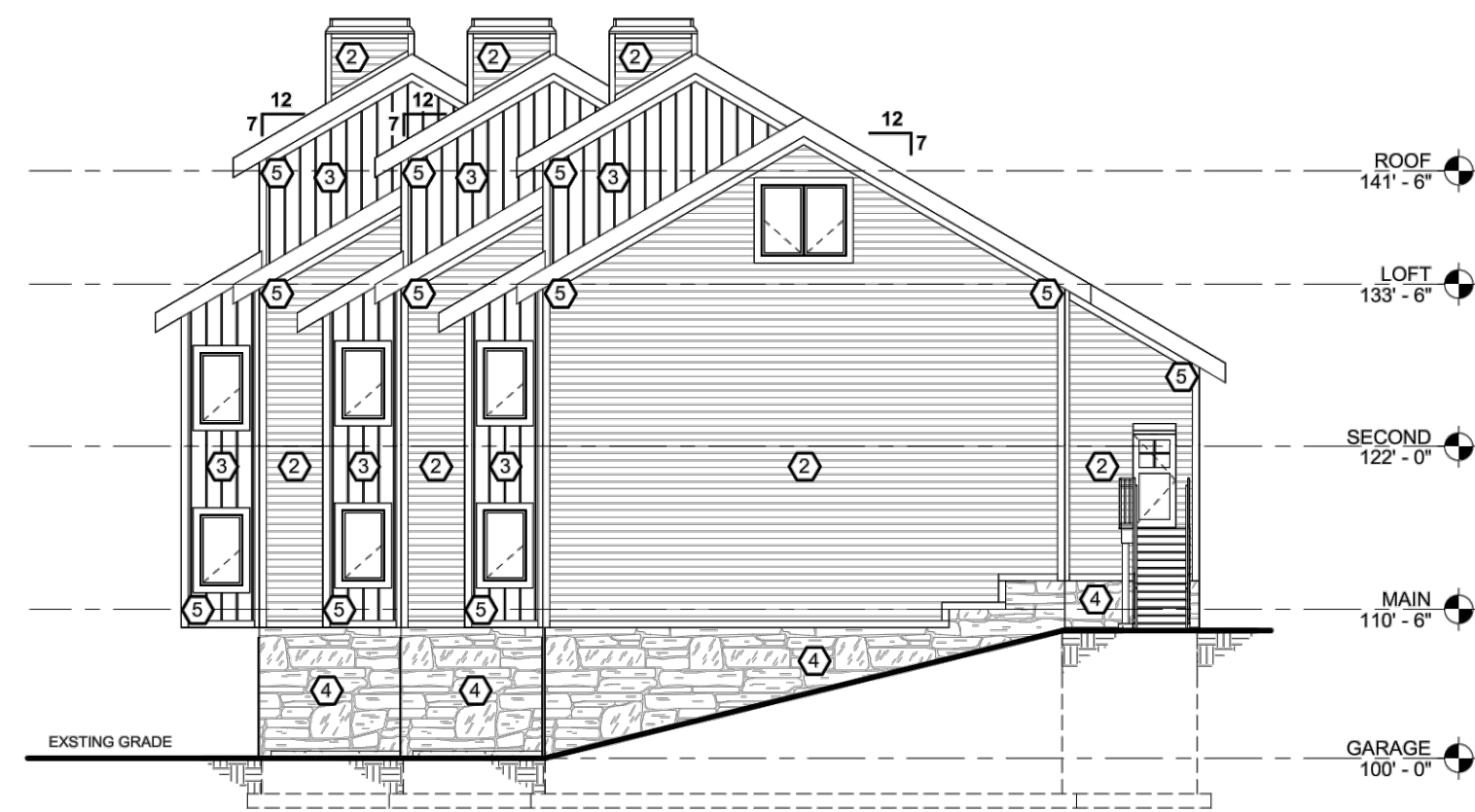
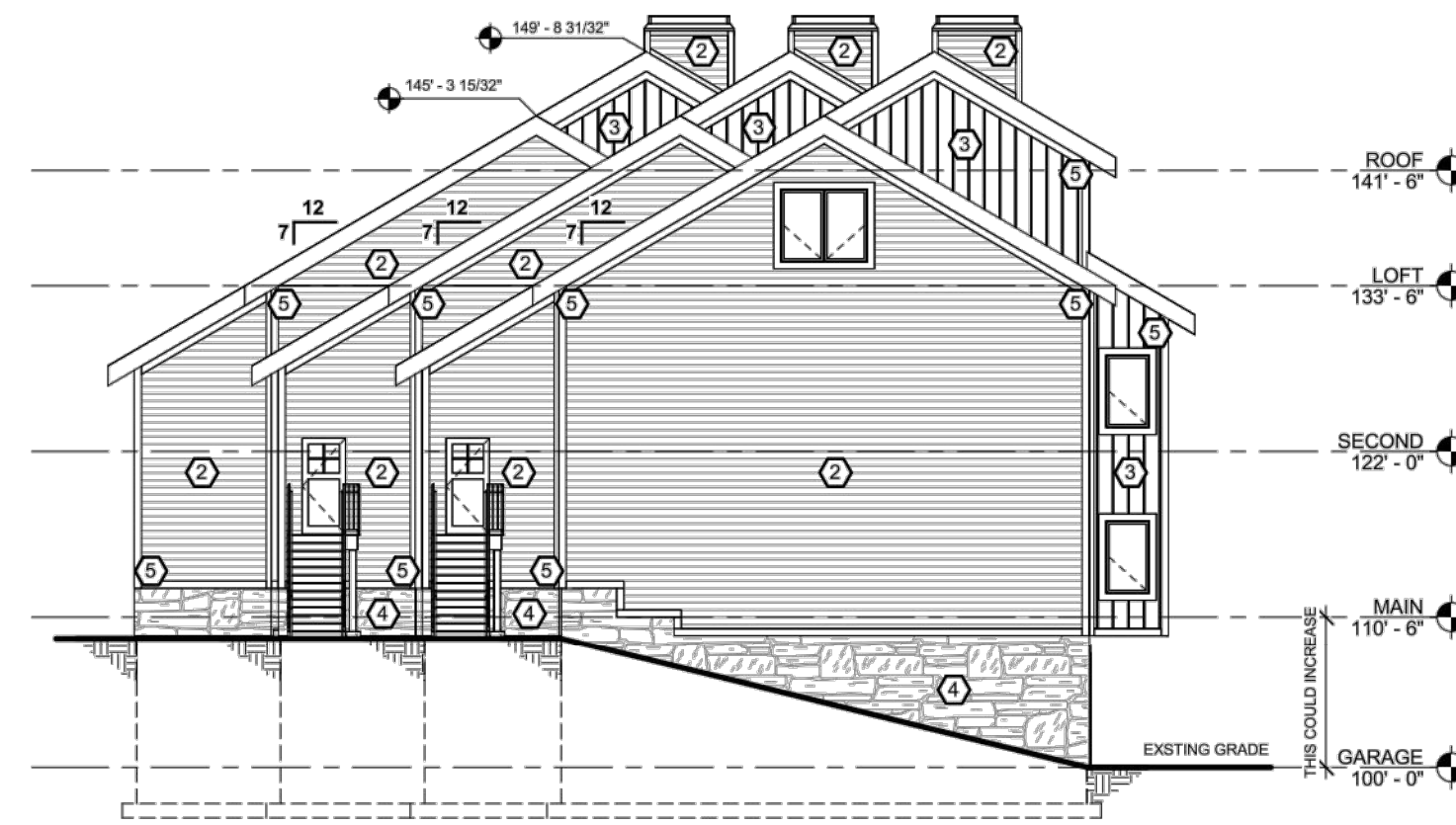




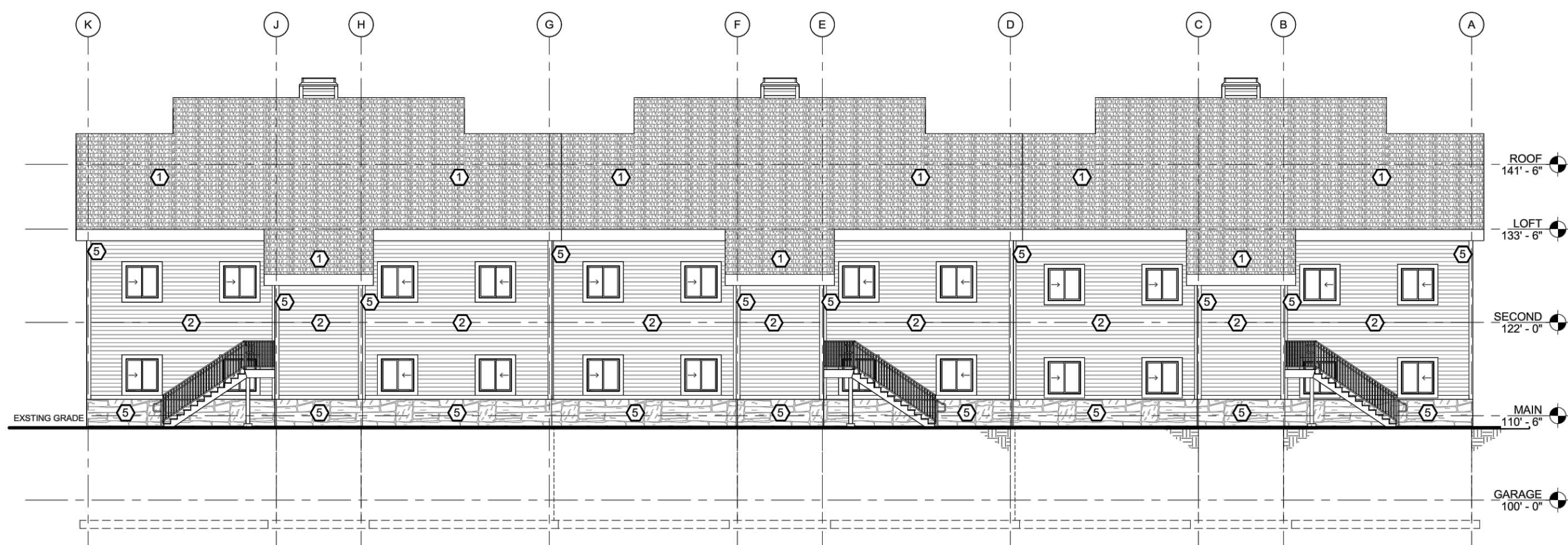
**SUNDOWN CONDOMINIUMS - PHASE 2**  
**A UTAH CONDOMINIUM PROJECT**  
 LOCATED IN THE NORTHEAST QUARTER OF SECTION 1,  
 TOWNSHIP 7 NORTH, RANGE 1 EAST, SALT LAKE BASE AND MERIDIAN,  
 WEBER COUNTY, UTAH  
 JANUARY 2022



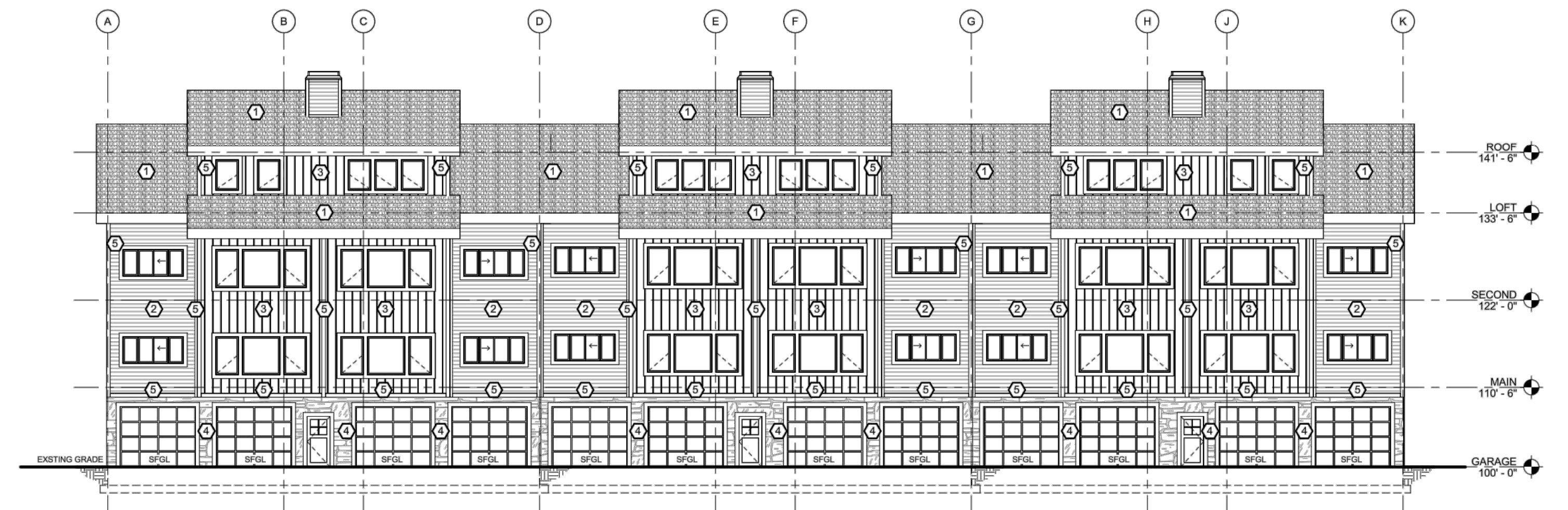
**RIGHT ELEVATION**



**LEFT ELEVATION**



**REAR ELEVATION**

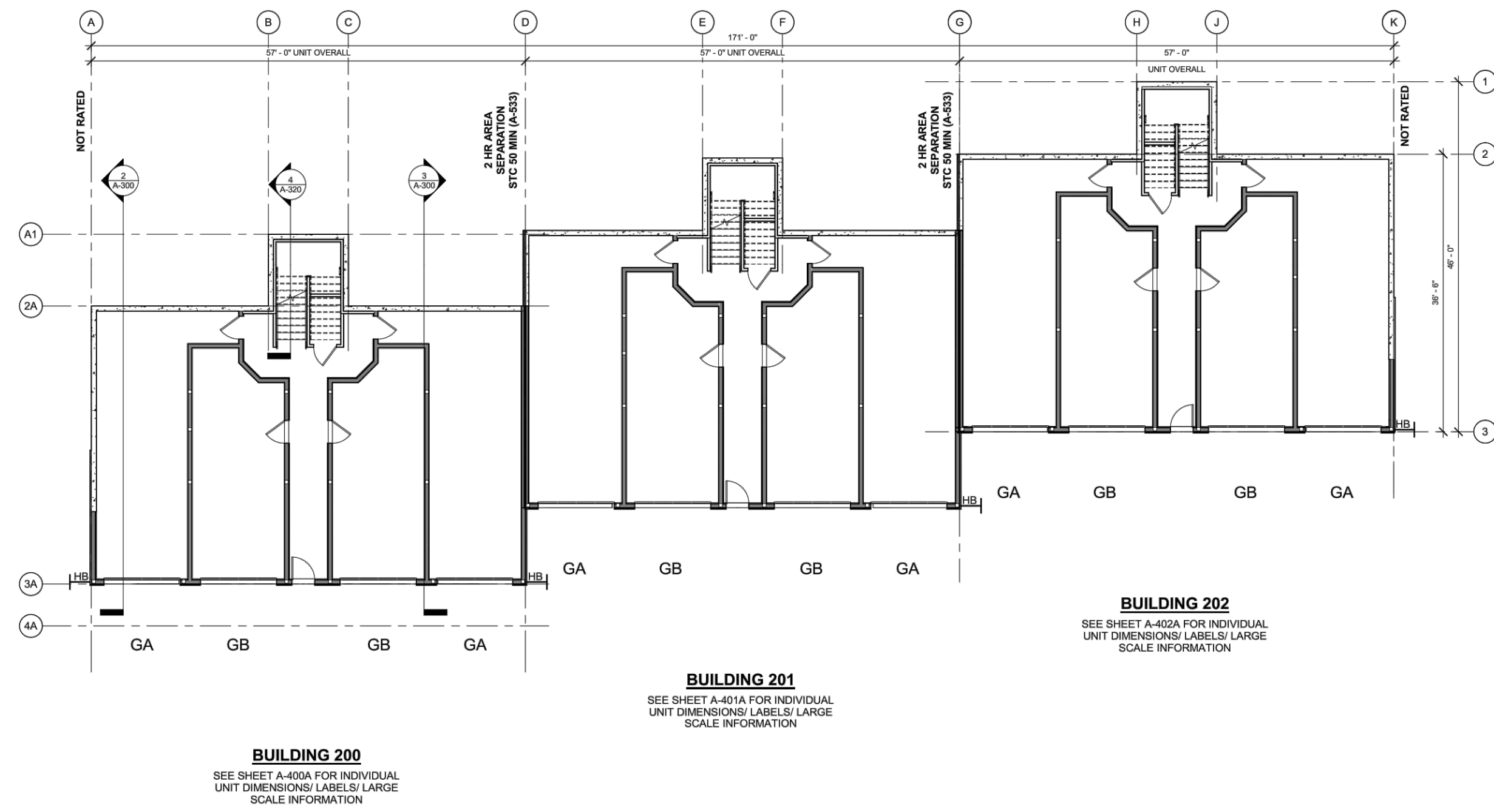


**FRONT ELEVATION**

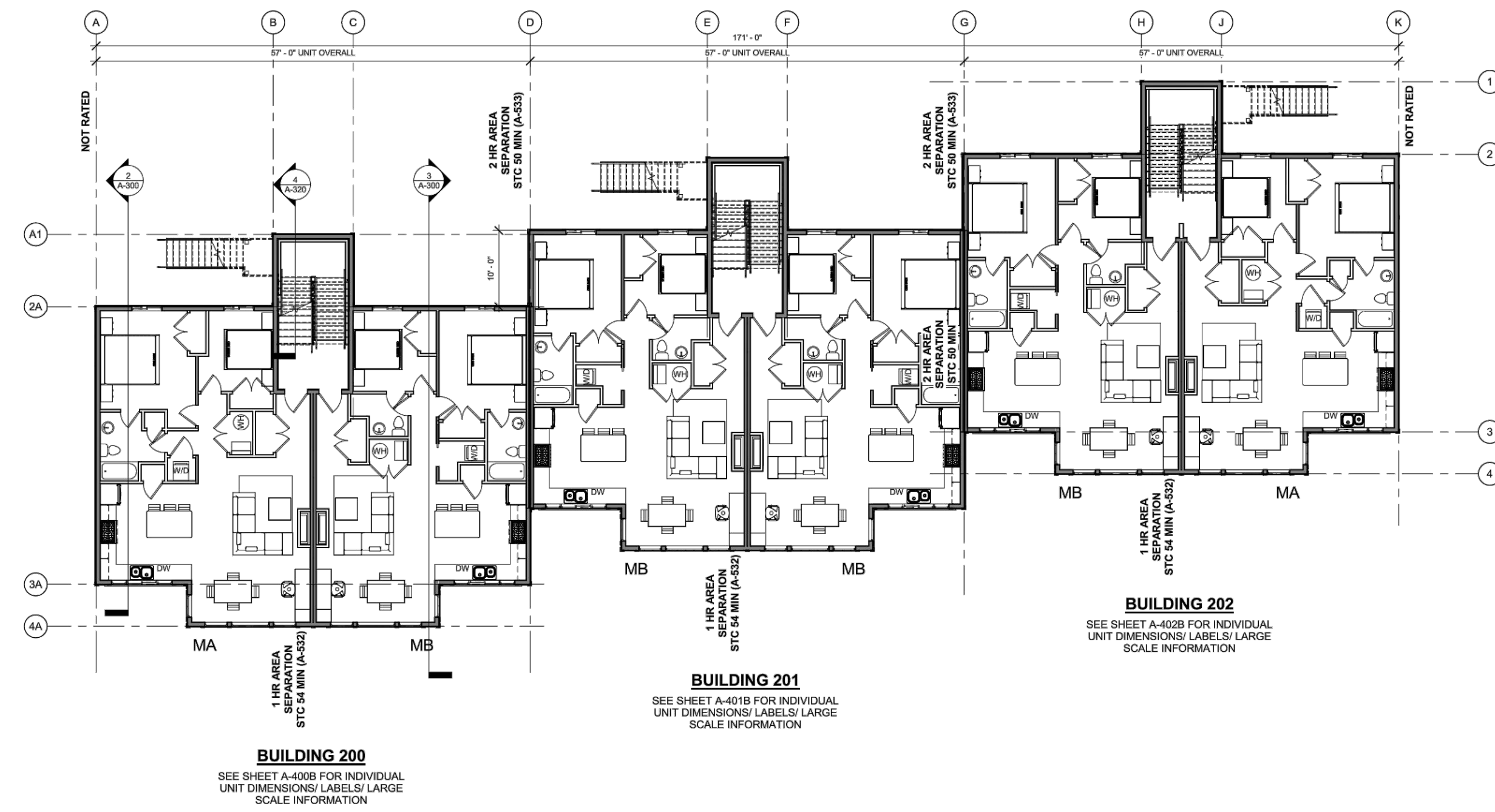
C:\USERS\WILLIAMS\WORK\ITEMS\SUNDOWN CONDOS - POWDER MOUNTAIN\SUNDOWN CONDOS WITH IMAGERY AND SURFACE\SUNDOWN CONDOMINIUMS PLT.DWG

DEVELOPER: GUY WILLIAMS gwilliams@fawkesconsultants.com	S2 3	COUNTY RECORDER ENTRY NO. _____ FEE PAID _____ FILED FOR AND RECORDED _____ AT _____ IN BOOK _____ OF OFFICIAL RECORDS, PAGE _____ RECORDED FOR _____ _____ COUNTY RECORDER BY: _____
<p style="font-weight: bold; margin-top: 5px;">LAYTON SURVEYS LLC</p>		

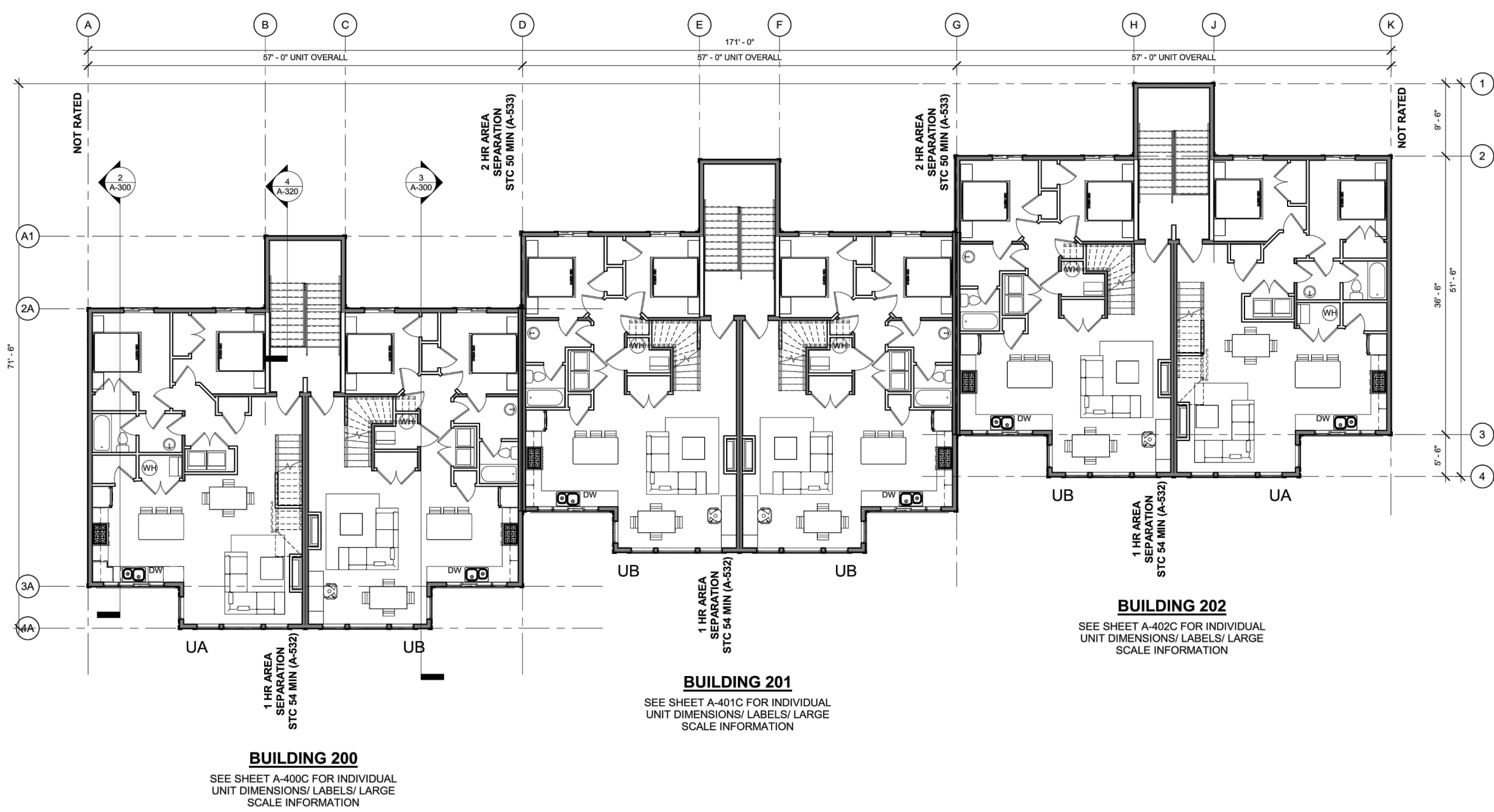
**SUNDOWN CONDOMINIUMS - PHASE 2**  
**A UTAH CONDOMINIUM PROJECT**  
 LOCATED IN THE NORTHEAST QUARTER OF SECTION 1,  
 TOWNSHIP 7 NORTH, RANGE 1 EAST, SALT LAKE BASE AND MERIDIAN,  
 WEBER COUNTY, UTAH  
 JANUARY 2022



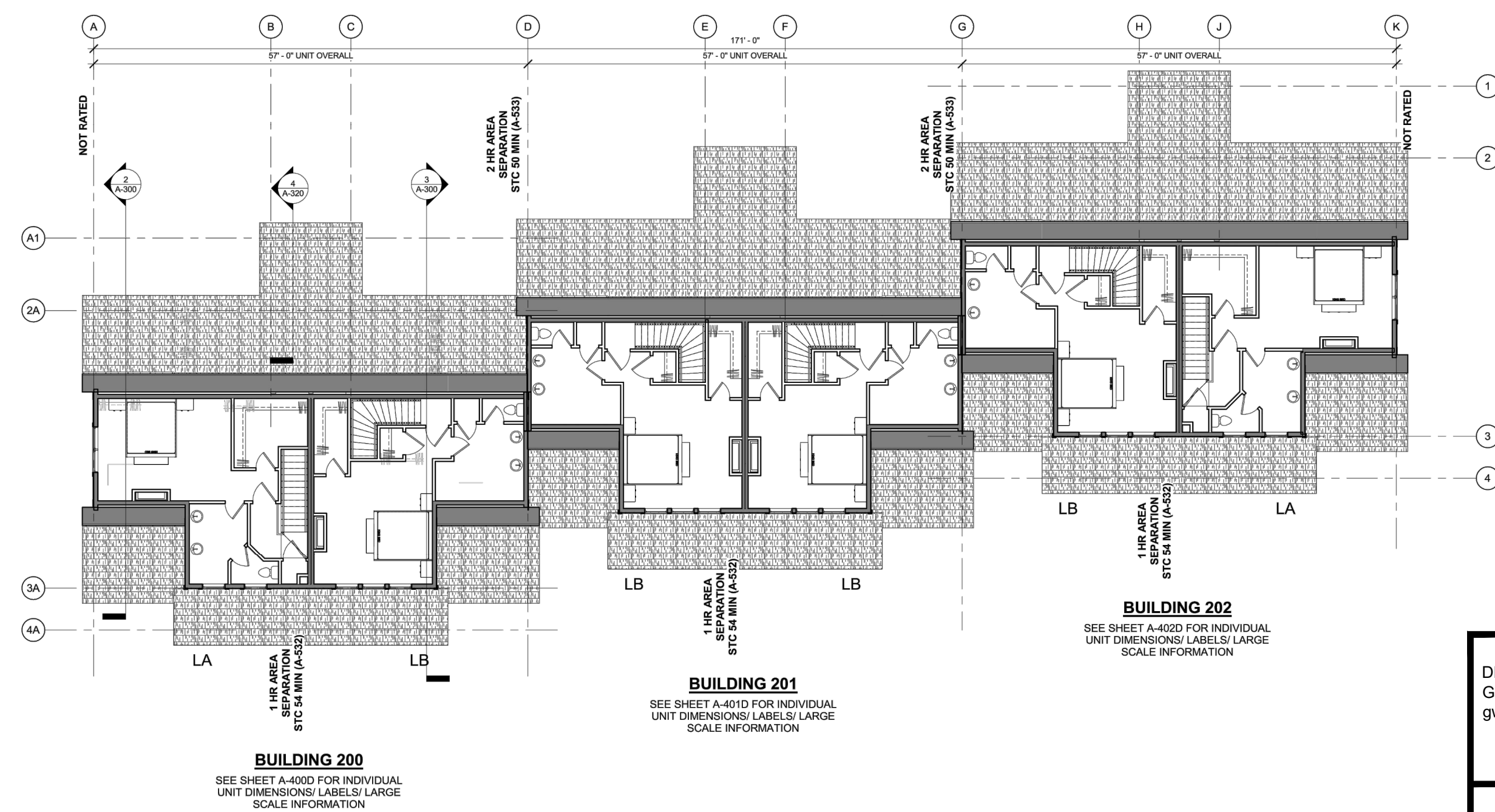
**GARAGE LEVEL FLOOR PLAN**  
 1/8" = 1'-0"



**MAIN FLOOR PLAN**  
 1/8" = 1'-0"



**SECOND LEVEL FLOOR PLAN**  
 1/8" = 1'-0"



**LOFT FLOOR PLAN**  
 1/8" = 1'-0"

C:\USERS\WILLIAMS\WORK\TEMP\SUNDOWN CONDOS - POWDER MOUNTAIN\SUNDOWN CONDOS WITH IMAGERY AND SURFACES\SUNDOWN CONDOMINIUMS PLT.DWG

DEVELOPER: GUY WILLIAMS gwilliams@fawkesconsultants.com	<b>S3</b> <b>3</b>	COUNTY RECORDER ENTRY NO. _____ FEE PAID _____ FILED FOR AND RECORDED _____ AT _____ IN BOOK _____ OF OFFICIAL RECORDS, PAGE _____ RECORDED FOR _____ COUNTY RECORDER BY: _____