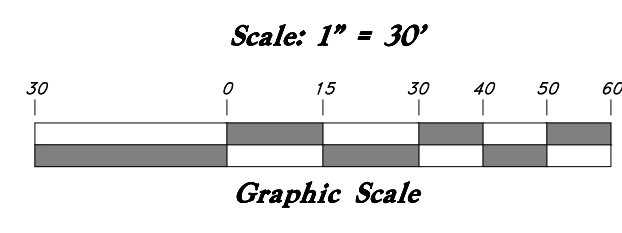


Legend
(Note: All items may not appear on drawing)

Keypad	(K)
San. Sewer Manhole	(S)
Water Manhole	(W)
Storm Drain Manhole	(SD)
Electrical Manhole	(E)
Catch Basins	(CB)
Exist. Fire Hydrant	(FH)
Fire Hydrant	(F)
Exist. Water Valve	(WV)
Water Valve	(W)
Sanitary Sewer	(SS)
Culinary Water	(CW)
Gas Line	(G)
Irrigation Line	(I)
Storm Drain	(SD)
Telephone Line	(T)
Secondary Waterline	(SW)
Power Line	(P)
Fire Line	(F)
Land Drain	(LD)
Power pole	(PP)
Power pole w/guy	(PPG)
Light Pole	(LP)
Fence	(F)
Flowline of ditch	(FD)
Overhead Power line	(OHP)
Corrugated Metal Pipe	(CMP)
Concrete Pipe	(CP)
Reinforced Concrete Pipe	(RCP)
Ductile Iron	(DI)
Polyvinyl Chloride	(PVC)
Top of Asphalt	(TA)
Edge of Asphalt	(EA)
Centerline	(CL)
Flowline	(FL)
Finish Floor	(FF)
Top of Curb	(TC)
Top of Wall	(TW)
Top of Walk	(TOW)
Top of Concrete	(TCN)
Natural Ground	(NG)
Finish Grade	(FG)
Fire Department Connection	(FDC)
Finish Contour	(FC)
Exist. Contour	(EC)
Finish Grade	(95.337A)
Exist. Grade	(95.721A)
Ridge Line	(R)
Direction of Flow	(D)
Unused Space	(U)

Existing Asphalt
New Asphalt
Heavy Duty Asphalt
Concrete
Spill
Curb & Gutter
Demo Tree



- GENERAL SITE NOTES:**
1. Stalls designated as accessible will require a painted accessible symbol and sign. (See Details)
 2. Fire lane markings and signs to be installed as directed by the Fire Marshall. Road widths equal to or less than 32 feet shall require red curbside painting and "No Parking" signs that are approved positioned along the fire apparatus access routes. (See detail on sheet C0503).
 3. Aisle markings, directional arrows and stop bars will be painted at each driveway as shown on the plans.
 4. Building sidewalks, ramps, and bollards are building contractor responsible items. See architectural plans.
 5. All dimensions are to back of curb unless otherwise noted.
 6. Fire hydrants and access roads shall be installed prior to construction of any buildings. All fire hydrants shall be placed with the 4 1/2" connection facing the point of access for Fire Department Apparatus.
 7. All fire apparatus access roads shall be a minimum all-weather, drivable and maintainable surface. There shall be a minimum clear and unobstructed width of not less than 26 feet and an unobstructed vertical clearance of not less than 13 feet 6 inches. Dead-end roads created in excess of 150 feet in length shall be provided with an approved turn-around.

PRIVATE ENGINEER'S NOTICE TO CONTRACTORS

The Contractor agrees that he shall assume sole and complete responsibility for job site conditions during the course of construction of this project, including safety of all persons and property; that this requirement shall apply continuously and not be limited to normal working hours; and that the contractor shall defend, indemnify, and hold the owner and the engineer harmless from any and all liability, real or alleged, in connection with the performance of work on this project, excepting for liability arising from the sole negligence of the owner or the engineer.

ALL CONSTRUCTION TO CONFORM TO OGDEN CITY STANDARDS AND SPECIFICATIONS IN RIGHT OF WAY

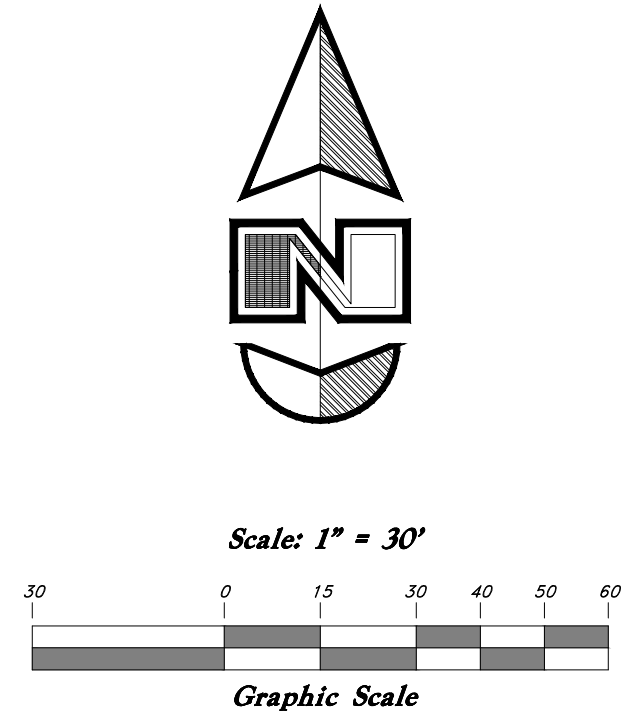
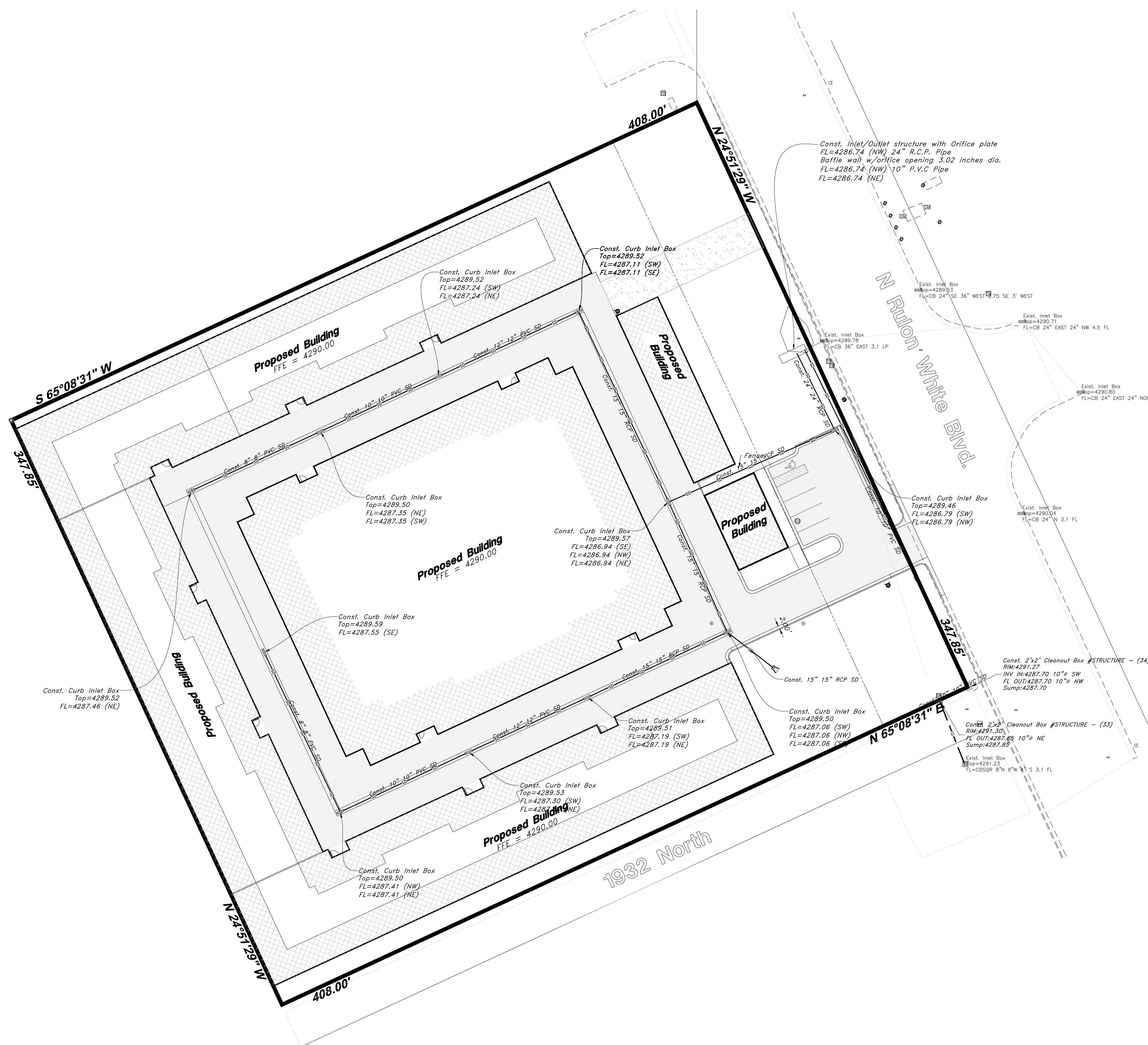
SITE DATA
Parcel Area 141,923 sq.ft. or 3.258 Acres
Impervious Surface Area 113,487 sq.ft. or 2.605 Acres
Building Area 77,089 sq.ft. or 1.769 Acres
Pervious Surface Area 28,435 sq.ft. (20%)
Up to 50% of Pervious Surface will be irrigated the remaining area will be xeriscaped with rock and/or 0 Water Plantings
Parking
4 Standard Stalls
1 ADA Stall
5 Total Stalls

GREAT BASIN ENGINEERING

5746 SOUTH 11475 EAST OGDEN, UTAH 84403
MAIN 8013514515 FAX 8013927754
WWW.GREATBASINENGINEERING.COM

Site Plan

Weber Storage Sheds
1957 N. Rulon White Blvd.
Ogden City, Weber County, Utah
A part of Section ??, T3N, R3W, SLB&M, U.S. Survey



Legend

- (Note: All items may not appear on drawing)
- Keypad**
- San, Sewer Manhole
 - Water Manhole
 - Storm Drain Manhole
 - Electrical Manhole
 - Catch Basins
 - Exist. Fire Hydrant
 - Fire Hydrant
 - Exist. Water Valve
 - Water Valve
 - Sanitary Sewer
 - Culinary Water
 - Gas Line
 - Irrigation Line
 - Storm Drain
 - Telephone Line
 - Secondary Waterline
 - Power Line
 - Fire Line
 - Land Drain
 - Power pole w/guy
 - Light Pole
 - Fence
 - Flowline of ditch
 - Overhead Power line
 - Corrugated Metal Pipe
 - Concrete Pipe
 - Reinforced Concrete Pipe
 - Ductile Iron
 - Polyvinyl Chloride
 - Top of Asphalt
 - Edge of Asphalt
 - Centerline
 - Flowline
 - Finish Floor
 - Top of Curb
 - Top of Wall
 - Top of Walk
 - Top of Concrete
 - Natural Ground
 - Finish Grade
 - Fire Department Connection
 - Finish Contour
 - Exist. Contour
 - Finish Grade
 - Exist. Grade
 - Ridge Line
 - Direction of Flow
 - Unused Space
- Existing Asphalt**
- New Asphalt**
- Heavy Duty Asphalt**
- Concrete**
- Spill**
- Curb & Gutter**
- Demo Tree**

- GENERAL UTILITY NOTES:**
- Coordinate all utility connections to building with plumbing plans and building contractor.
 - Verify depth and location of all existing utilities prior to constructing any new utility lines. Notify Civil Engineer of any discrepancies or conflicts prior to any connections being made.
 - All catch basin and inlet box grates are to be bicycle proof.
 - All inlet boxes located in curb and gutter are to be placed parallel to the curb and gutter and set under the frame and grate. Improperly placed boxes will be removed and replaced at no additional cost to the owner. Precast or cast in place boxes are acceptable.
 - Refer to the site electrical plan for details and locations of electrical lines, transformers and light poles.
 - Gas lines, telephone lines, and cable TV lines are not a part of these plans unless otherwise noted.
 - Water meters are to be installed per city standards and specifications. It will be the contractor's responsibility to install all items required.
 - Water lines, valves, fire hydrants, fittings etc. are to be constructed as shown. Contractor is responsible to construct any vertical adjustments necessary to clear sewer, storm drain or other utilities as necessary including valve boxes and hydrant spoils to proper grade.
 - Field verify all existing and/or proposed Roof Drain/Roof Drain down spout connections to Storm Water System with Civil, Plumbing & Architectural plans. Notify Engineer of any discrepancies.
 - All gravity flow utility lines shall be installed prior to any pressurized utilities unless written permission is obtained from the engineer of record before construction begins.
 - Contractor to verify existing water & sewer lateral & water meter meet Layton City Standards prior to construction.
 - Fire hydrants and access roads shall be installed prior to construction of any buildings. All hydrants shall be with the 4.5" connection facing the point of access for Fire Department Apparatus. Provide written assurance that this will be met.
 - The private fire hydrants shall be annually maintained and a 5-year flow test shall be performed in accordance with NFPA 24 and 25. All records shall be provided and submitted through The Compliance Engine found at <http://www.thecomplianceengine.com>
 - Prior to beginning construction of any buildings, a fire flow test of the new hydrants shall be conducted to verify the actual fire flow available for this project. The Fire Prevention Division of this department shall witness this test and shall be notified a minimum of 48 hours prior to the test.

UTILITY PIPING MATERIALS:
All piping to be installed per manufacturers recommendations. Refer to project specifications for more detailed information regarding materials, installation, etc.

CULINARY SERVICE LATERALS

- 3/4" to 2" diameter pipe - copper tube ASTM B, Type K, Soft Temper or HDPE GTS-OD SDR-9 Poly.
- Over 2" diameter pipe - Class 51 ductile iron pipe or C-900 DR-14 PVC pipe.

WATER MAIN LINES AND FIRE LINES

- Pipe material as shown on utility plan view or to meet city standards.

SANITARY SEWER LINES

- All sewer piping to be Polyvinyl Chloride (PVC) sewer pipe, ASTM D 3034, Type PSM, SDR 35

STORM DRAIN LINES

- 12" pipes or smaller - Polyvinyl Chloride (PVC) sewer pipe, ASTM D3034, Type PSM, SDR 35
- 12" or larger - Reinforced Concrete Pipe, ASTM C76, Class III up to 13' of cover, Class IV for 13' to 21' of cover, Class V for 21' to 32' of cover, and Special Design for cover greater than 32 feet.

NATURAL GAS SERVICE LATERALS (QUESTAR)

- PLASTIC PIPING MATERIAL: Plastic polyethylene pipe materials and compression couplings must be approved for natural gas applications and must be installed underground. All plastic pipe and fittings must conform to ASTM D2513 (60 psi and above high density pipe approved 3408).
- Plastic pipe must be joined by individuals qualified in the heat fusion method of connecting pipe and fittings or approved mechanical fittings. A minimum number 18 insulated yellow copper tracer wire shall be installed with underground nonmetallic gas piping and shall terminate above grade at each end. Tracer wire shall not come in contact with plastic piping.
- Risers and prefabricated risers inserted with plastic pipe shall conform to ASTM D2513, shall be metallic, have a space of 10 inches from the bottom of the service valve and grade, and shall be wrapped or coated to a point at least 6 inches above grade or protected in an approved manner. When a riser connects underground to plastic pipe, the underground horizontal metallic portion of the riser shall extend at least 12 inches before connecting to the plastic pipe by means of an approved transition fitting, adapter or heat fusion.
- Plastic pipe used underground for customer fuel lines must be approved polyethylene material and be buried a minimum of 12 inches. It shall not be used inside buildings or above ground. PVC (Polyvinyl Chloride) is not approved for piping systems in Questar Gas's service area. Individual gas lines (metallic or plastic) to single outside appliance (outside lights, grilles, etc.) shall be installed a minimum of 8 inches below grade, provided such installation is approved and installed in locations not susceptible to physical damage.

CAUTION NOTICE TO CONTRACTOR
The contractor is specifically cautioned that the location and/or elevation of existing utilities as shown on these plans are based on records of the various utility companies and, where possible, measurements taken in the field. The information is not to be relied on as being exact or complete. The contractor must call the appropriate utility company at least 48 hours before any excavation to request exact field location of utilities. It shall be the responsibility of the contractor to relocate all existing utilities which conflict with the proposed improvements shown on the plans.

ALL CONSTRUCTION TO CONFORM TO OGDEN CITY STANDARDS AND SPECIFICATIONS IN RIGHT OF WAY

PRIVATE ENGINEER'S NOTICE TO CONTRACTORS
The Contractor agrees that he shall assume sole and complete responsibility for job site conditions during the course of construction of this project, including safety of all persons and property; that this requirement shall apply continuously and not be limited to normal working hours; and that the contractor shall defend, indemnify, and hold the owner and the engineer harmless from any and all liability, real or alleged, in connection with the performance of work on this project, excepting for liability arising from the sole negligence of the owner or the engineer.

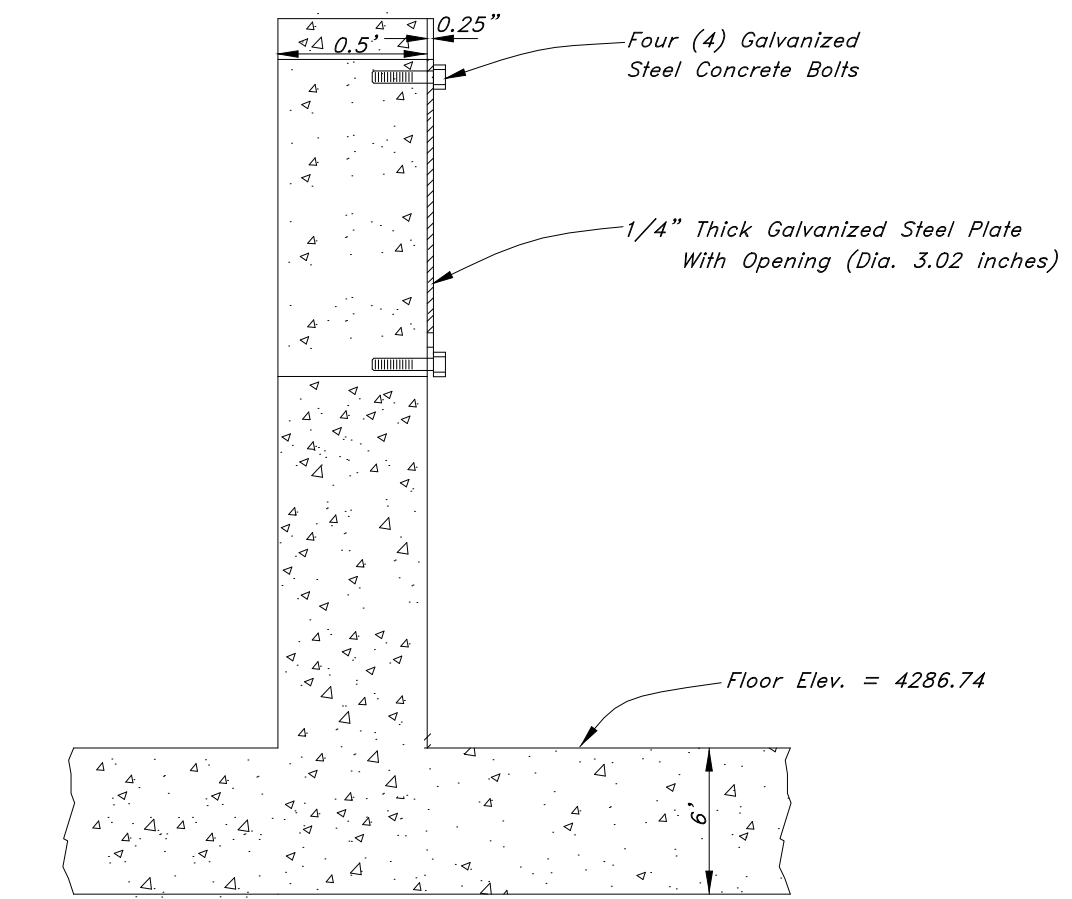
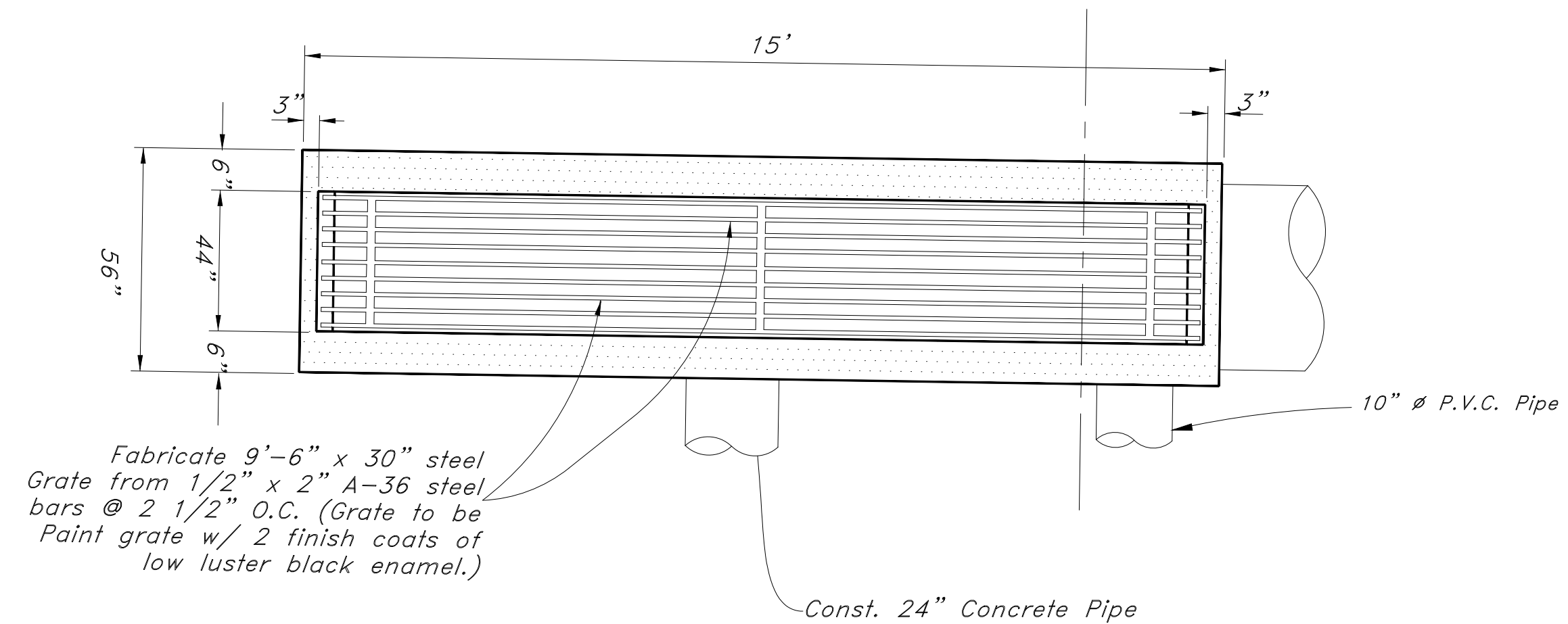
GREAT BASIN ENGINEERING

1475 EAST OGDEN UTAH 84403
5746 SOUTH 1550 EAST OGDEN UTAH 84403
WWW.GREATBASINENGINEERING.COM

Utility Plan

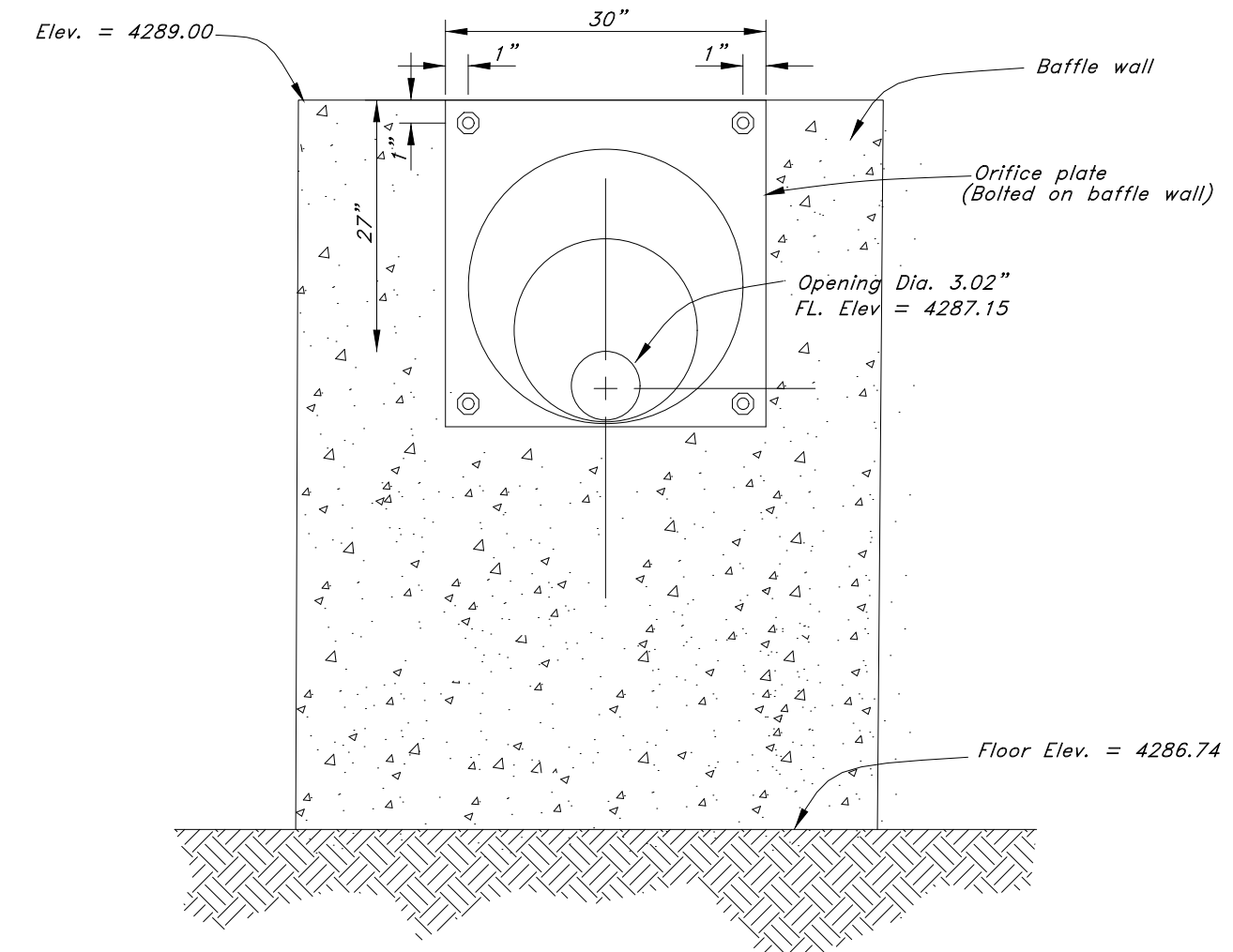
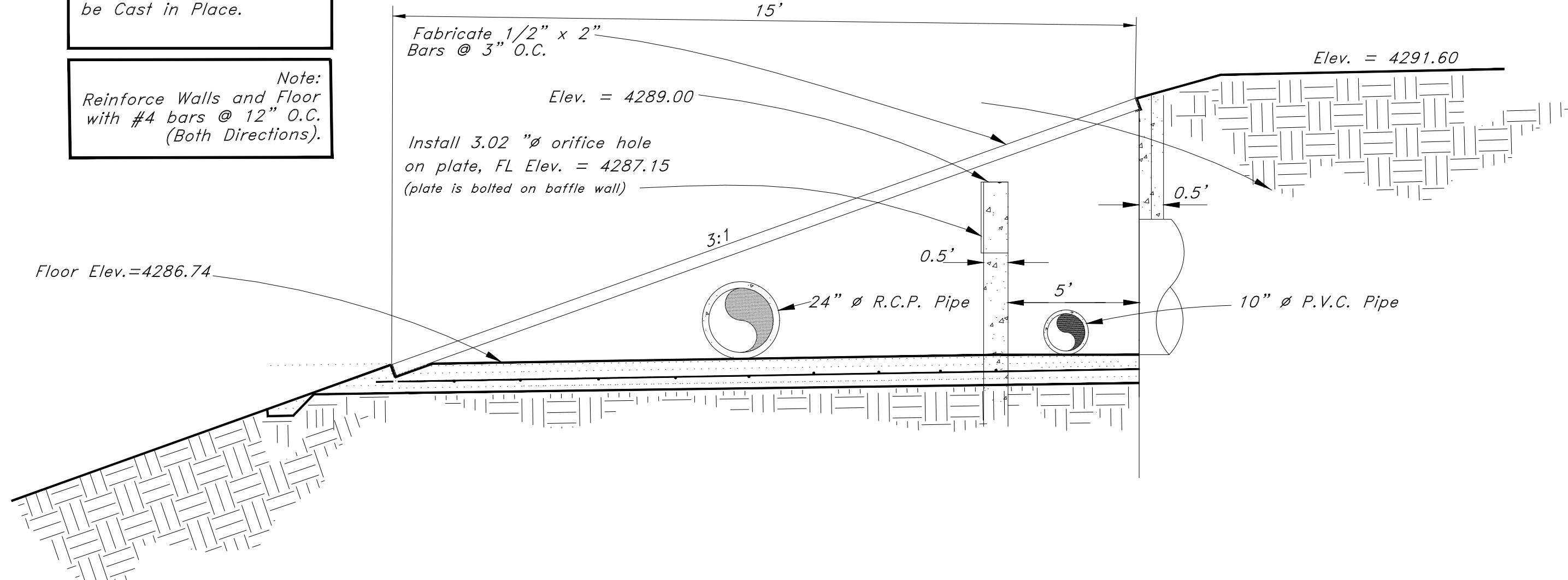
Weber Storage Sheds

1957 N. Rulon White Blvd.
Ogden City, Weber County, Utah
A part of Section ??, T?N, R?W, SLB&M, U.S. Survey



Note:
Inlet/Outlet Structure is to be Cast in Place.

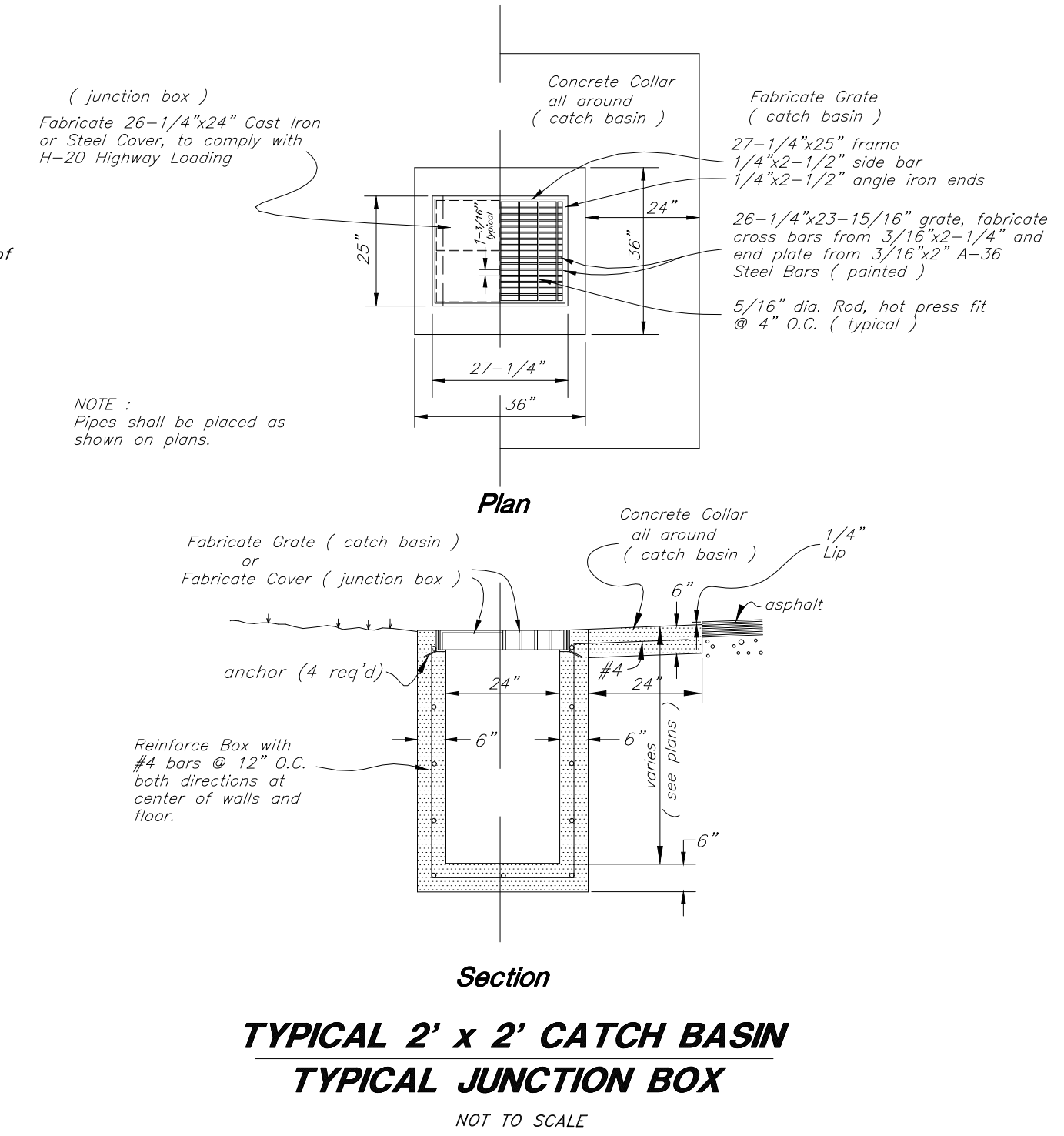
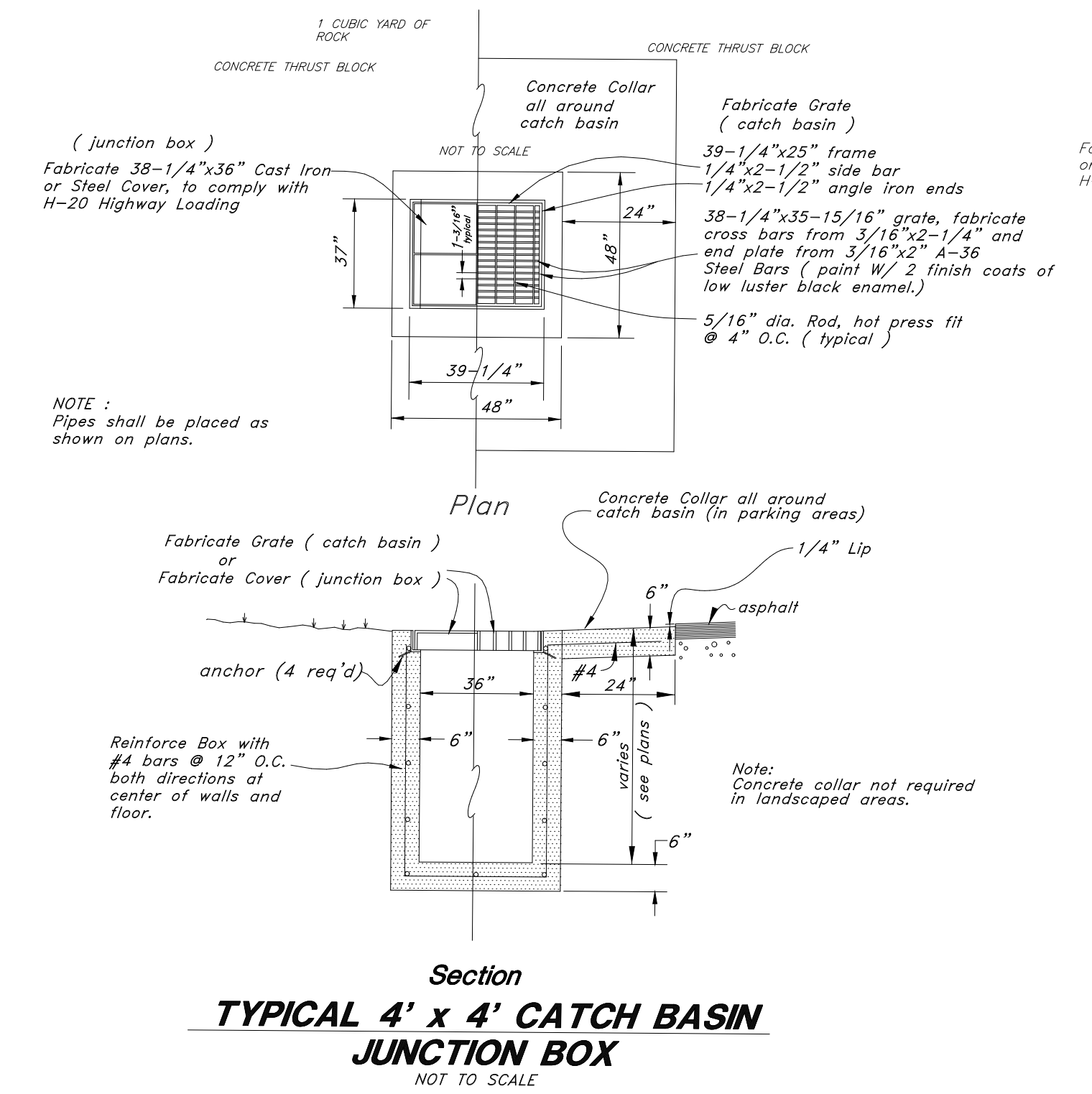
Note:
Reinforce Walls and Floor with #4 bars @ 12" O.C. (Both Directions).



Orifice Plate Detail
Not to Scale

Detail of Inlet / Outlet Structure

Not to Scale

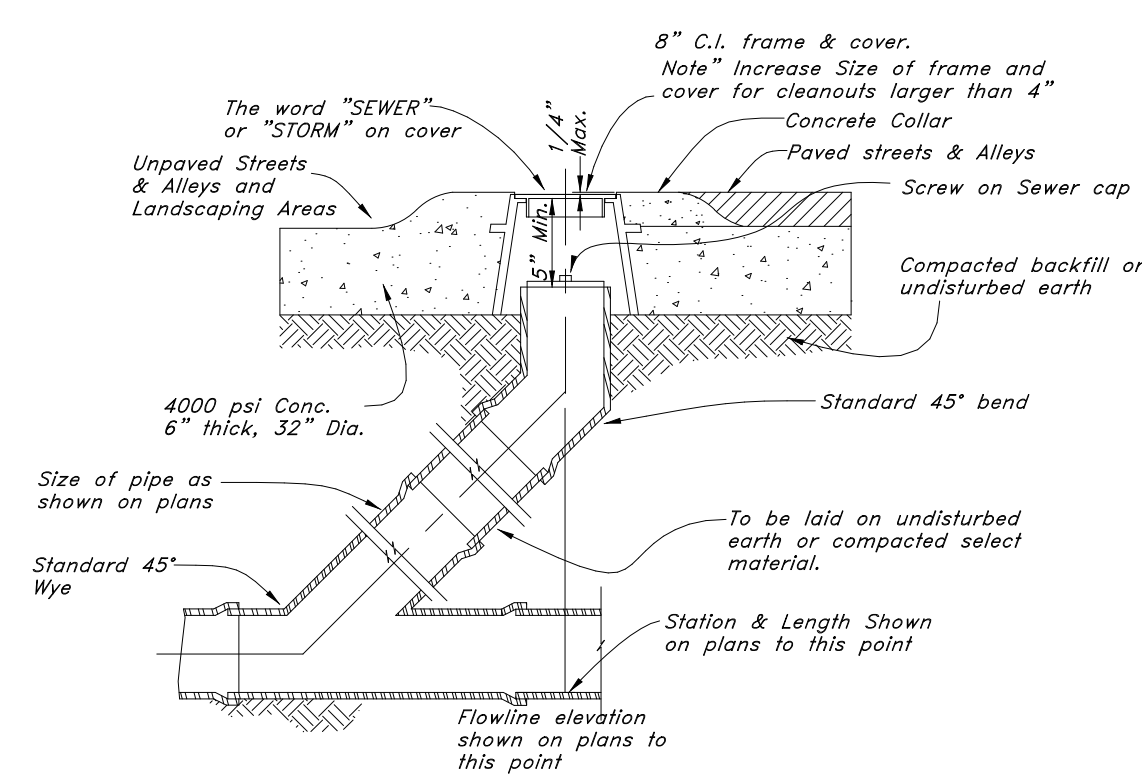


REV	DATE	DESCRIPTION

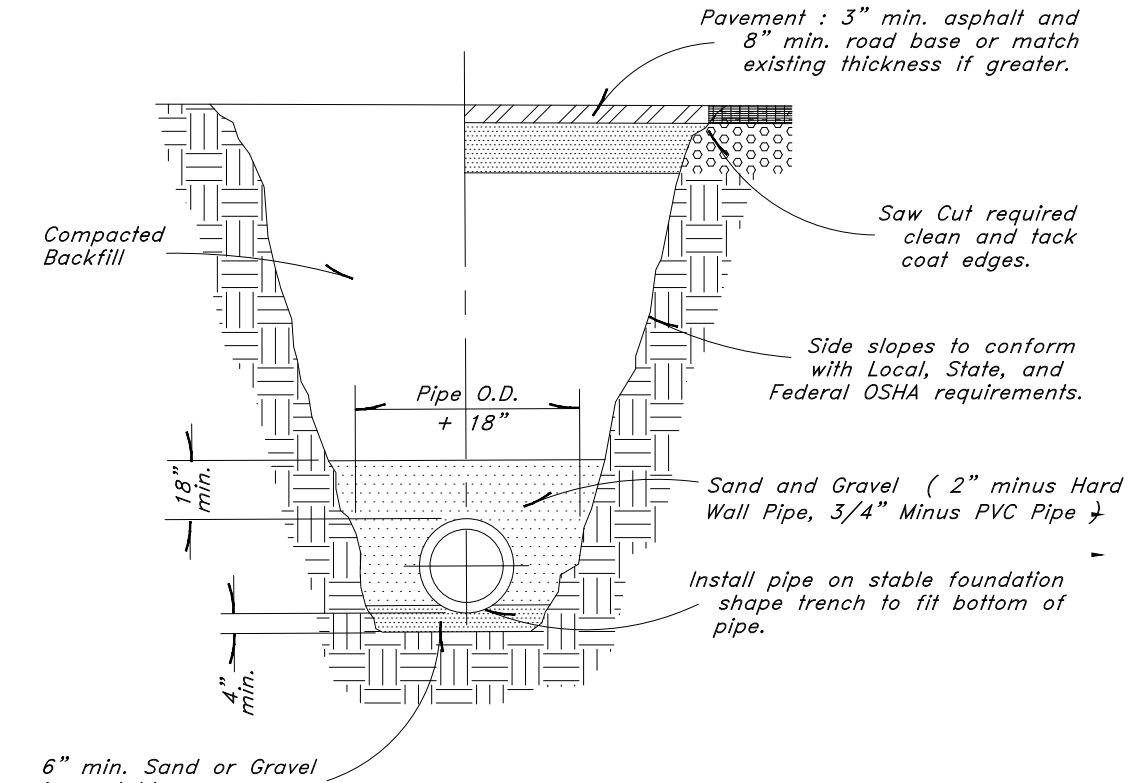
GREAT BASIN ENGINEERING

5746 SOUTH 1475 EAST OGDEN, UTAH 84403
 801-467-1399
 WWW.GREATBASINENGINEERING.COM

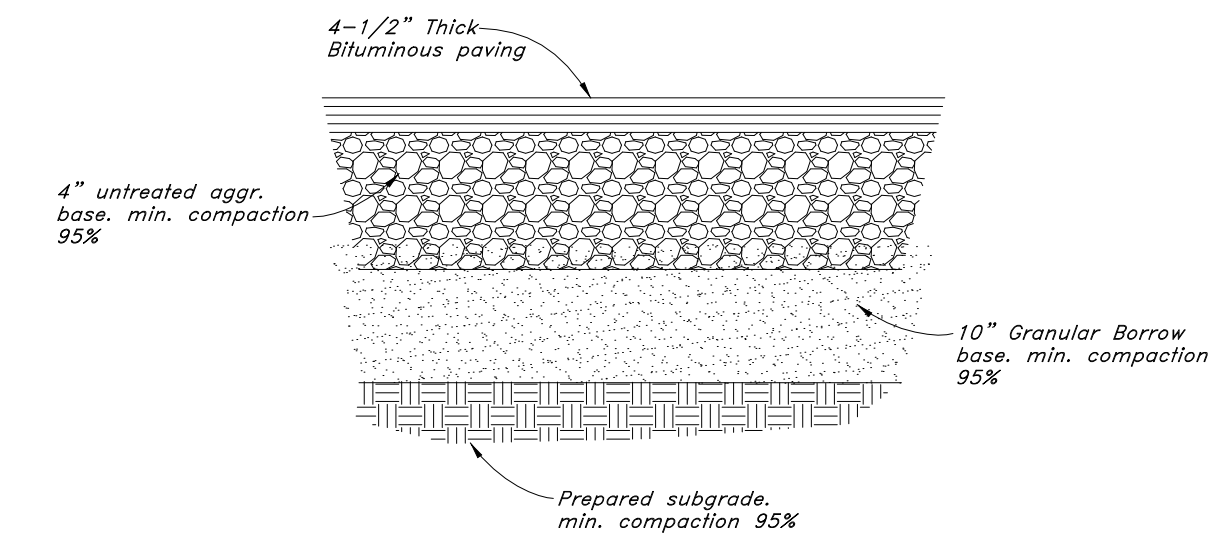
Details Sheets
Weber Storage Sheds
 1957 N. Rulon White Blvd.
 Ogden City, Weber County, Utah
 A part of Section ??, TPN, RPW, SLB&M, U.S. Survey



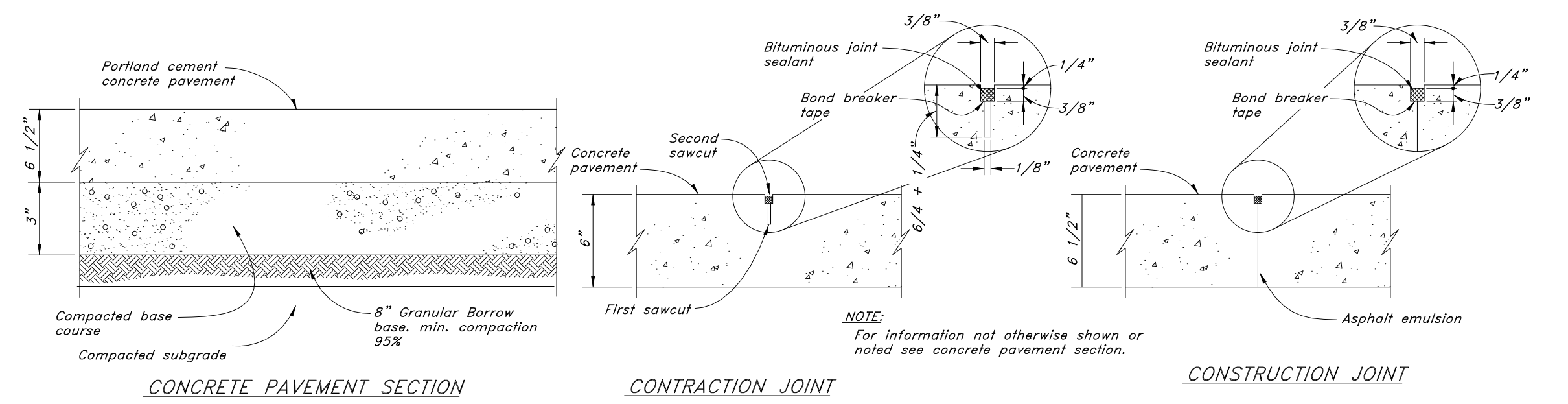
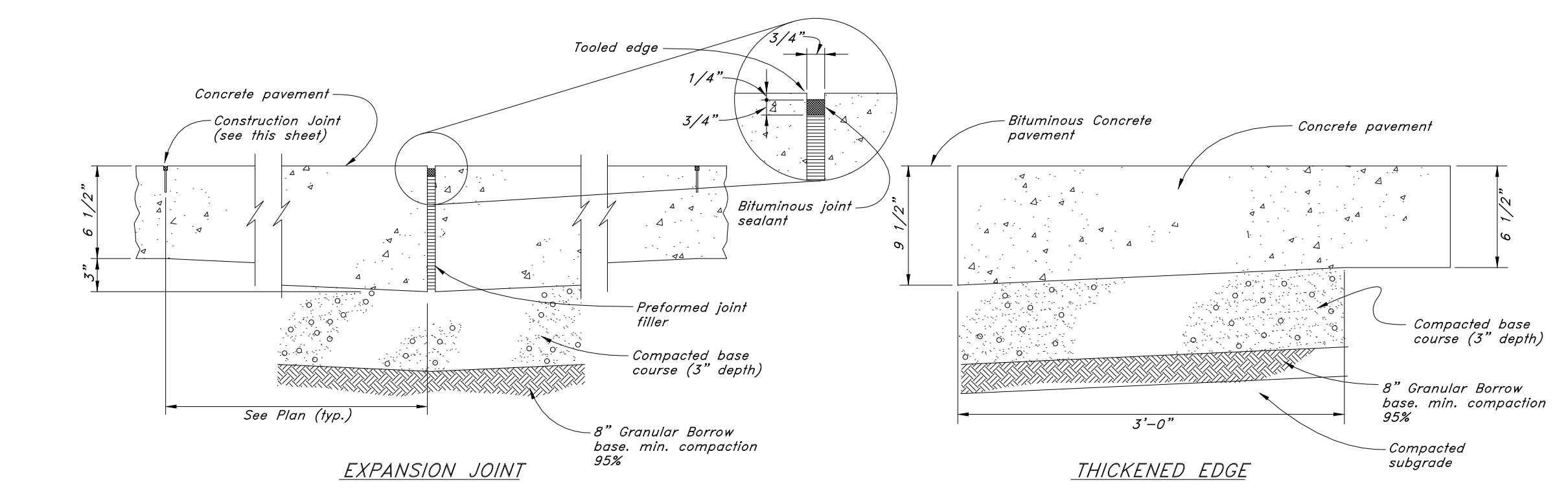
Sewer, Storm, and Roof Drain Cleanout Detail
Not to Scale



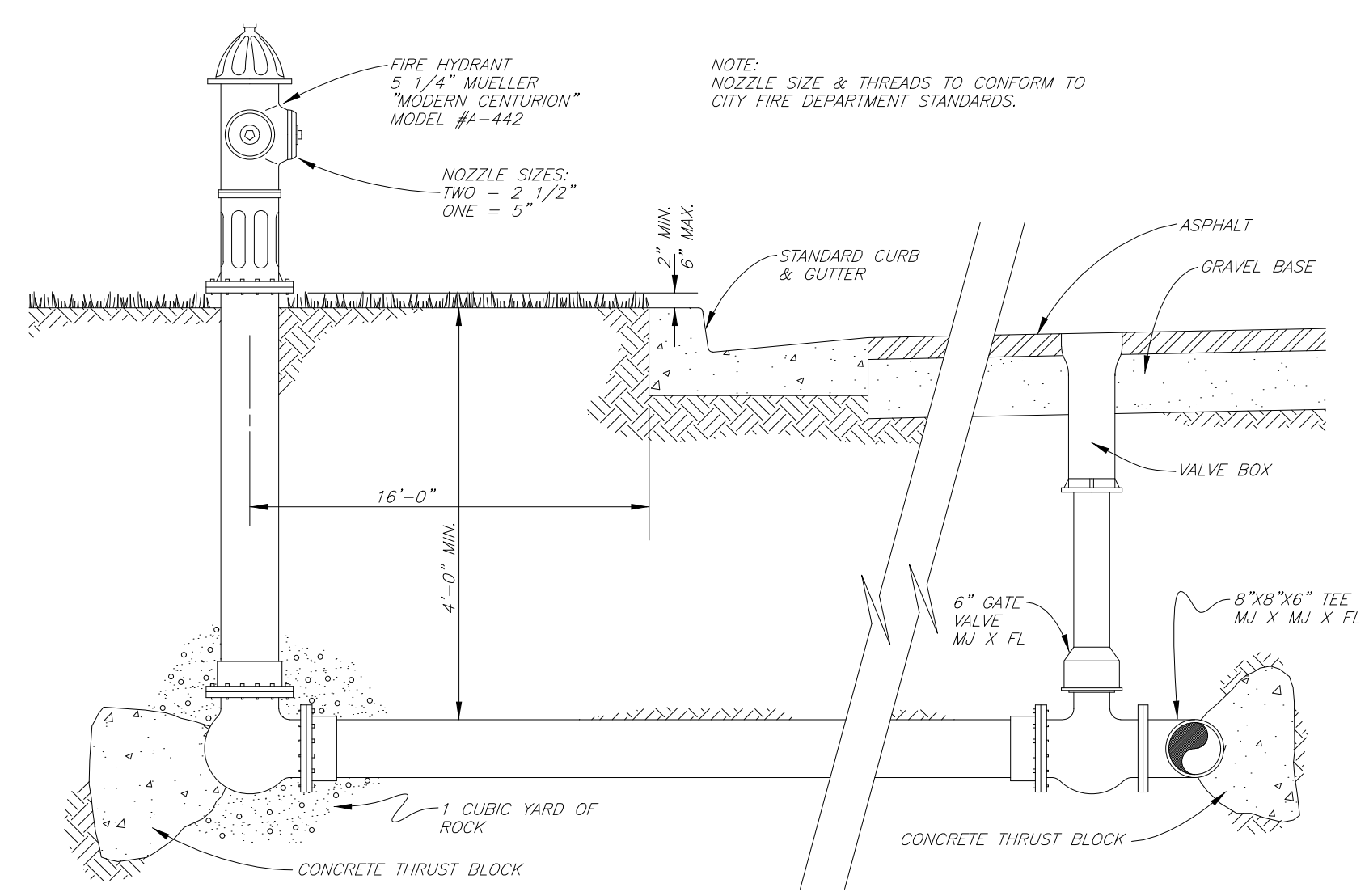
Typical Trench Detail



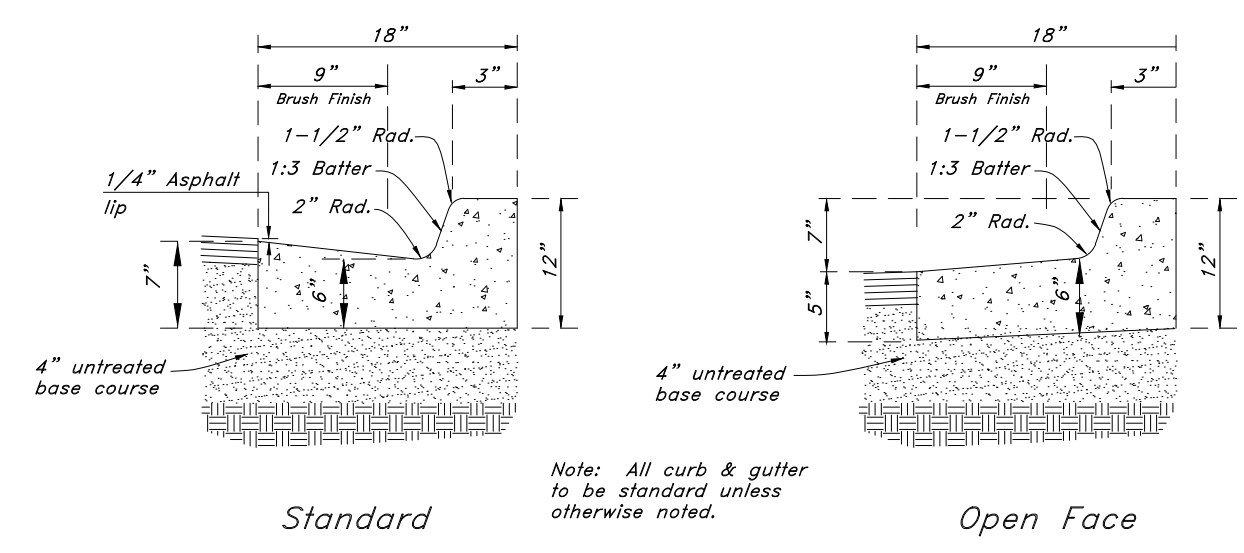
Typical Bituminous Pavement Section



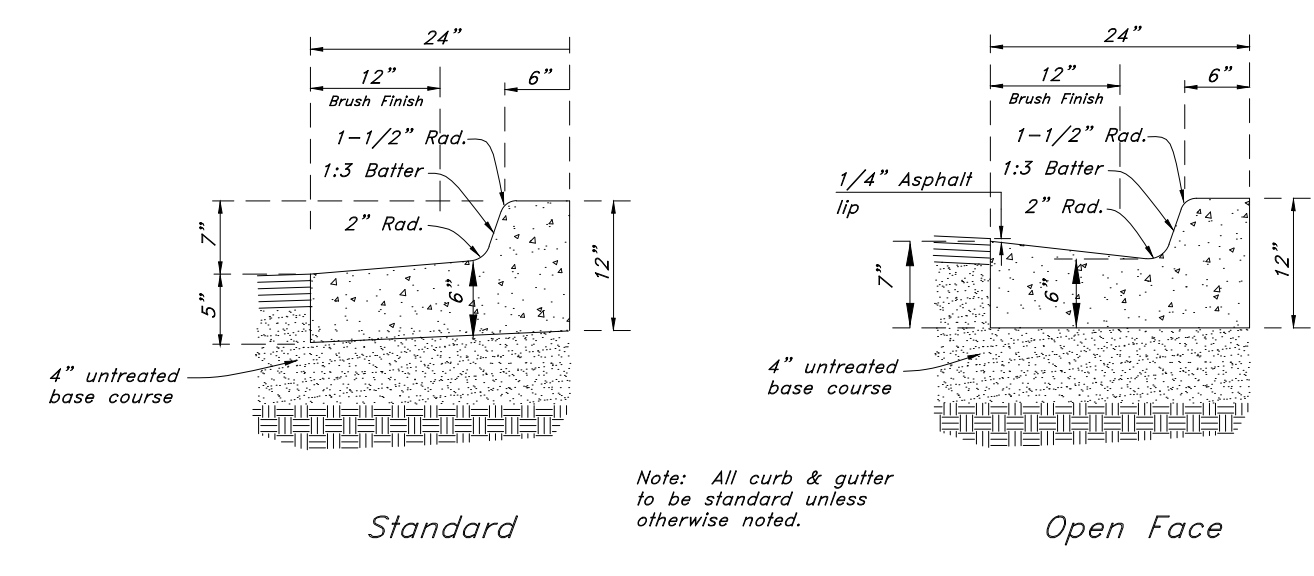
Portland Cement Concrete Pavement



Typical Fire Hydrant & Valve Connection
NOT TO SCALE



Typical Section - 18" Curb & Gutter



Typical Section - 24" Curb & Gutter

REV	DATE	DESCRIPTION

GREAT BASIN ENGINEERING

 5746 SOUTH 1475 EAST, OGDEN, UTAH 84403
 5615 SOUTH 1525 WEST, OGDEN, UTAH 84403
 WWW.GREATBASINENGINEERING.COM

Details Sheets
Weber Storage Sheds
 1957 N. Rulon White Blvd.
 Ogden City, Weber County, Utah
 A part of Section ??, T?N, R?W, SLB&M, U.S. Survey