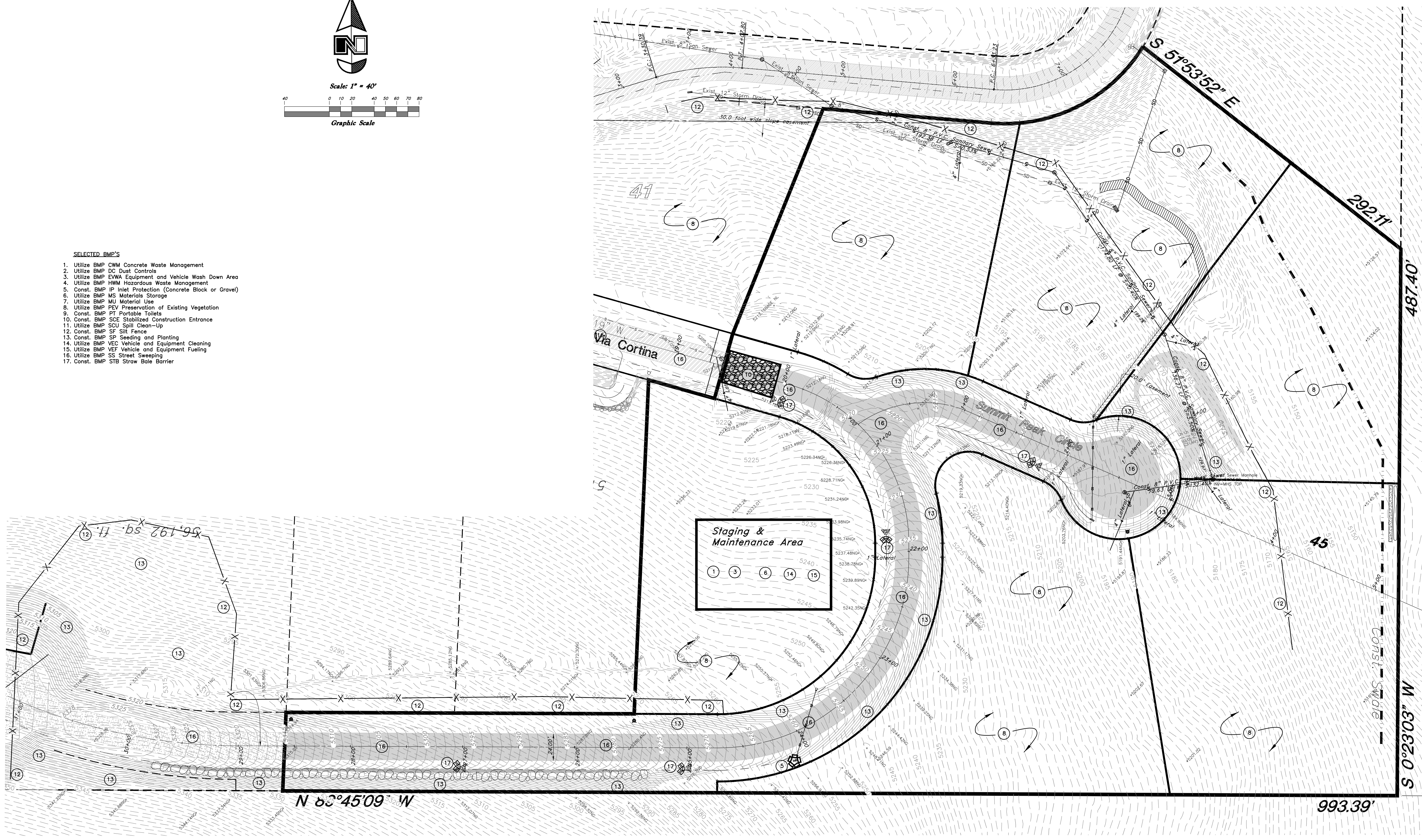


- SELECTED BMP'S**
1. Utilize BMP CWM Concrete Waste Management
 2. Utilize BMP DC Dust Controls
 3. Utilize BMP EWVA Equipment and Vehicle Wash Down Area
 4. Utilize BMP HWM Hazardous Waste Management
 5. Const. BMP IP Inlet Protection (Concrete Block or Gravel)
 6. Utilize BMP MS Materials Storage
 7. Utilize BMP MU Material Use
 8. Utilize BMP PEV Preservation of Existing Vegetation
 9. Const. BMP PT Portable Toilets
 10. Const. BMP SCE Stabilized Construction Entrance
 11. Utilize BMP SCU Spill Clean-Up
 12. Const. BMP SF Silt Fence
 13. Const. BMP SP Seeding and Planting
 14. Utilize BMP VEC Vehicle and Equipment Cleaning
 15. Utilize BMP VEF Vehicle and Equipment Fueling
 16. Utilize BMP SS Street Sweeping
 17. Const. BMP STB Straw Bale Barrier



Storm Water Pollution Prevention Plan		The Summit at Ski Lake Phase 12	
<small>A part of the Southwest 1/4 of Section 13, a part of the Northeast 1/4 of Section 23, and a part of the Northwest 1/4 of Section 24, T6N, R1E, SLB&M, U.S. Survey</small>			
<p>GREAT BASIN ENGINEERING NORTH CONSULTING ENGINEERS AND SURVEYORS 5746 South 1475 East - Suite 200 Ogden, Utah 84403 P.O. Box 150048, Ogden, Utah 84415 Ogden (801)394-4515 Salt Lake City (801)321-0222 Fax (801)392-7544</p>	SCALE : 1" = 40'	DATE : 26 Jun, 2013	DRWG. NO.
	DRAWN : RB	REVISIONS :	SWP
11N224			