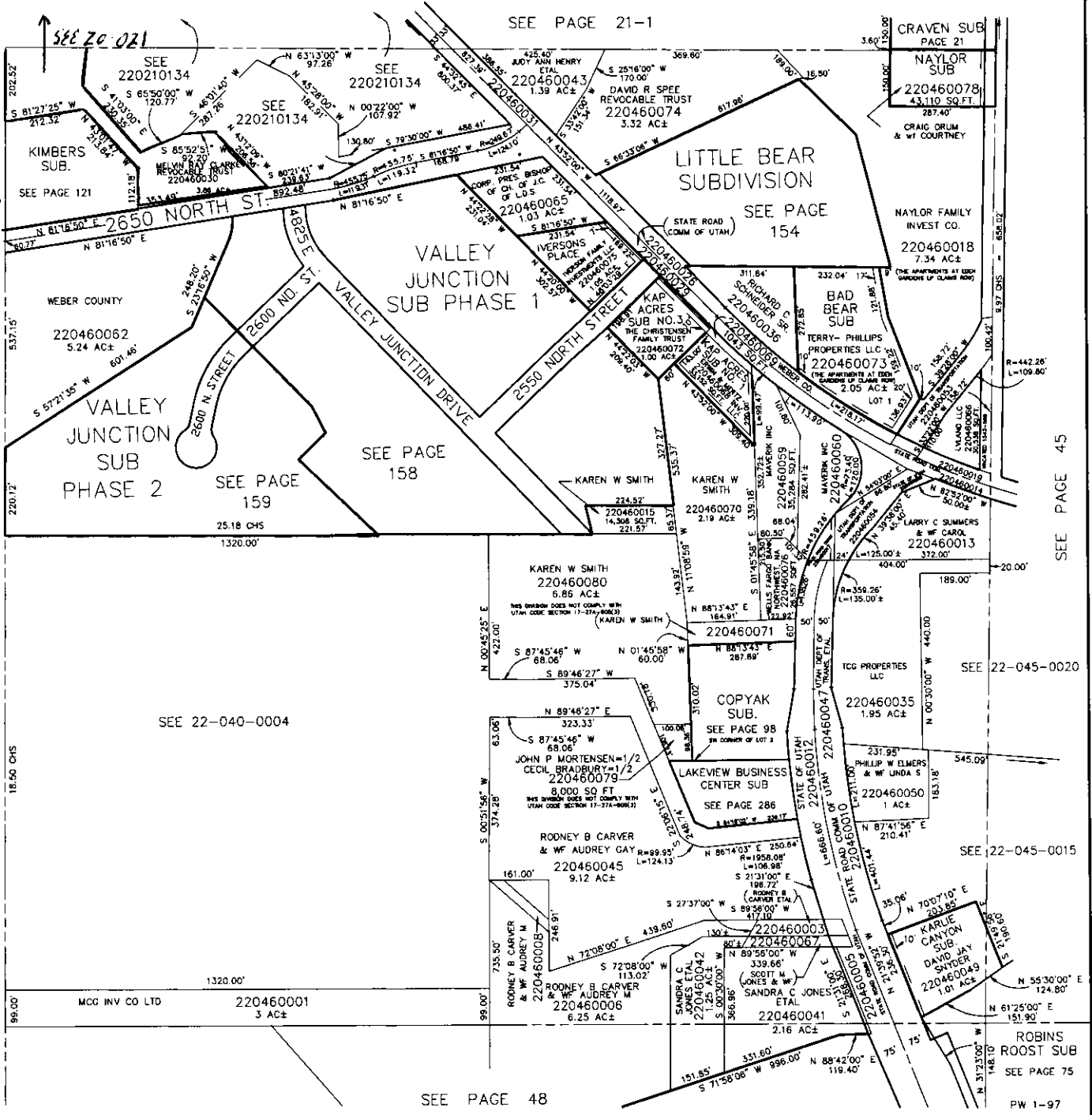


N.W. 1/4
SECTION 34, T.7N., R.1E., S.L.B. & M.

EDEN DISTRICT
SCALE 1" = 200'

TAXING UNIT: 317

SEE PAGE 21-1



*FOR ROAD DED INFO
SEE E2025048
BK 60 PG 38

SEE PAGE 40

SEE PAGE 45

SEE 22-040-0004

SEE 22-045-0020

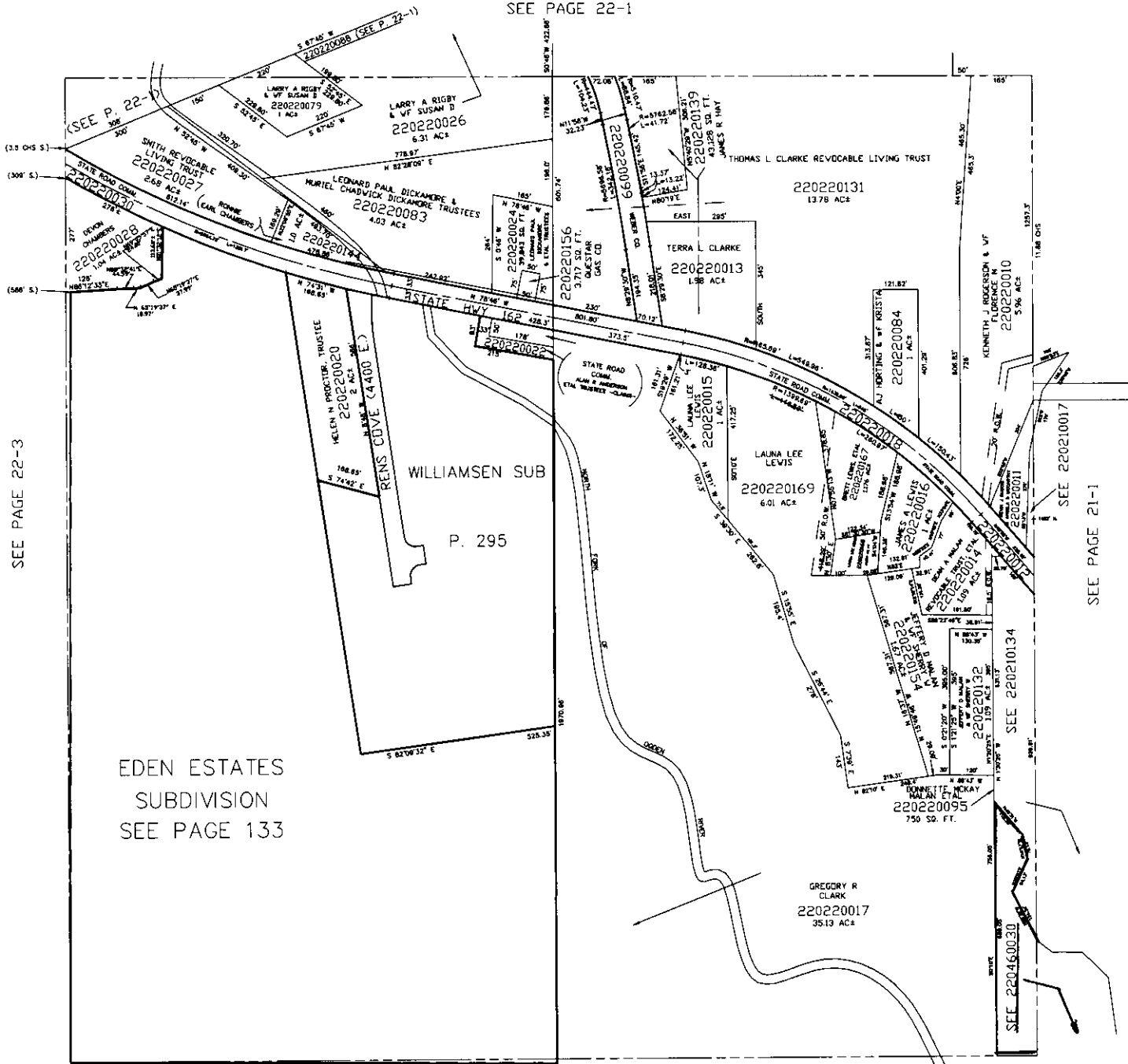
SEE 22-045-0015

SEE PAGE 48

S.E. 1/4
SECTION 28, T.7N., R.1E., S.L.B. & M.

IN WEBER COUNTY
SCALE 1" = 200'
SEE PAGE 22-1

TAXING UNIT: 317



SEE PAGE 22-3

SEE PAGE 21-1

EDEN ESTATES
SUBDIVISION
SEE PAGE 133

SECTION 27, T.7N., R.1E., S.L.B. & M.

IN WEBER COUNTY

SCALE 1" = 400'

TAXING UNIT: 203, 317

SEE PAGE 16

ELKHORN SUB PH 2
LOTS 24 TO 28 AMENDED

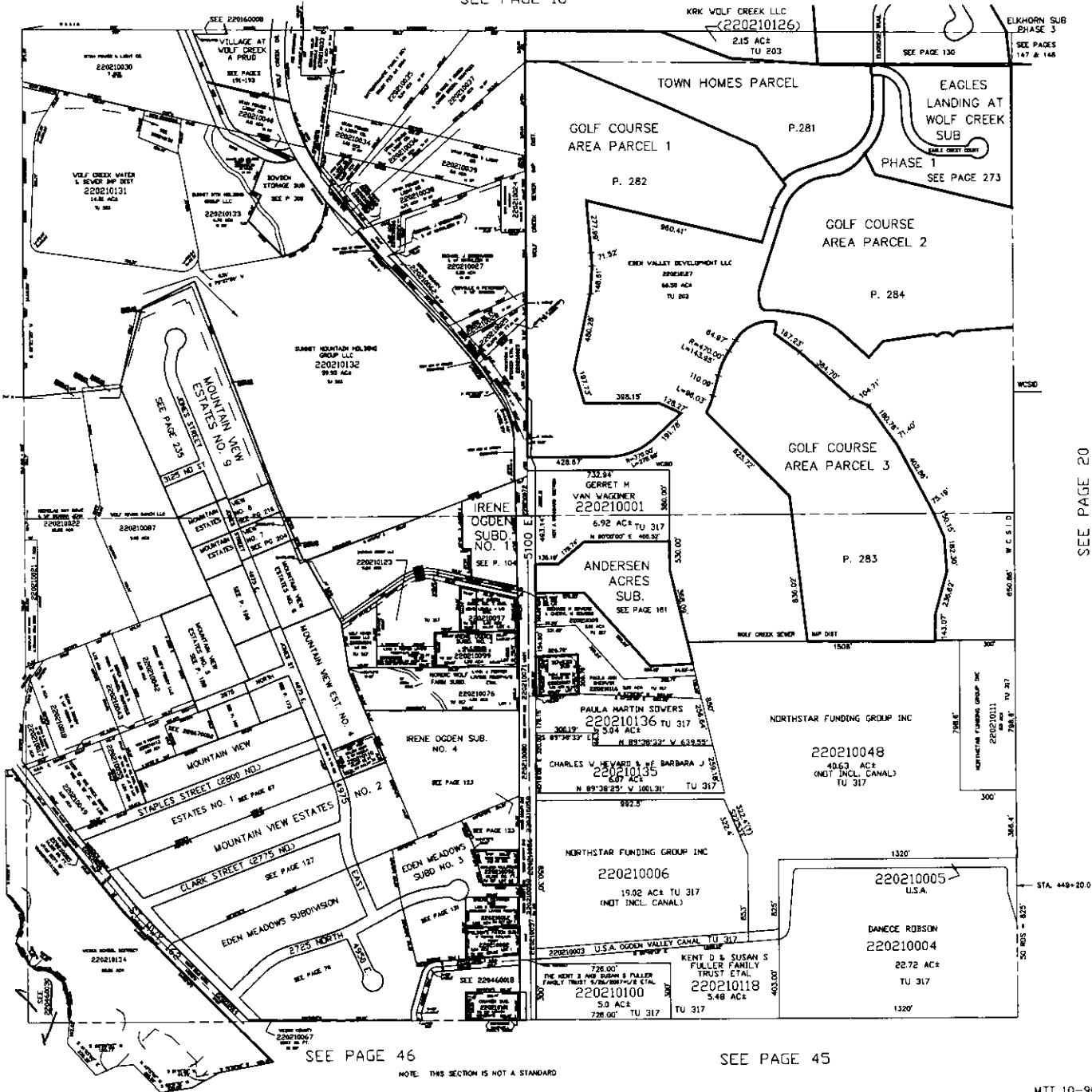
KRK WOLF CREEK LLC
(220210126)
2.15 AC±
TU 293

ELKHORN SUB
PHASE 3
SEE PAGES
147 & 148

SEE PAGE 130

SEE PAGE 22

SEE PAGE 20



SEE PAGE 46

SEE PAGE 45

NOTE: THIS SECTION IS NOT A STANDARD