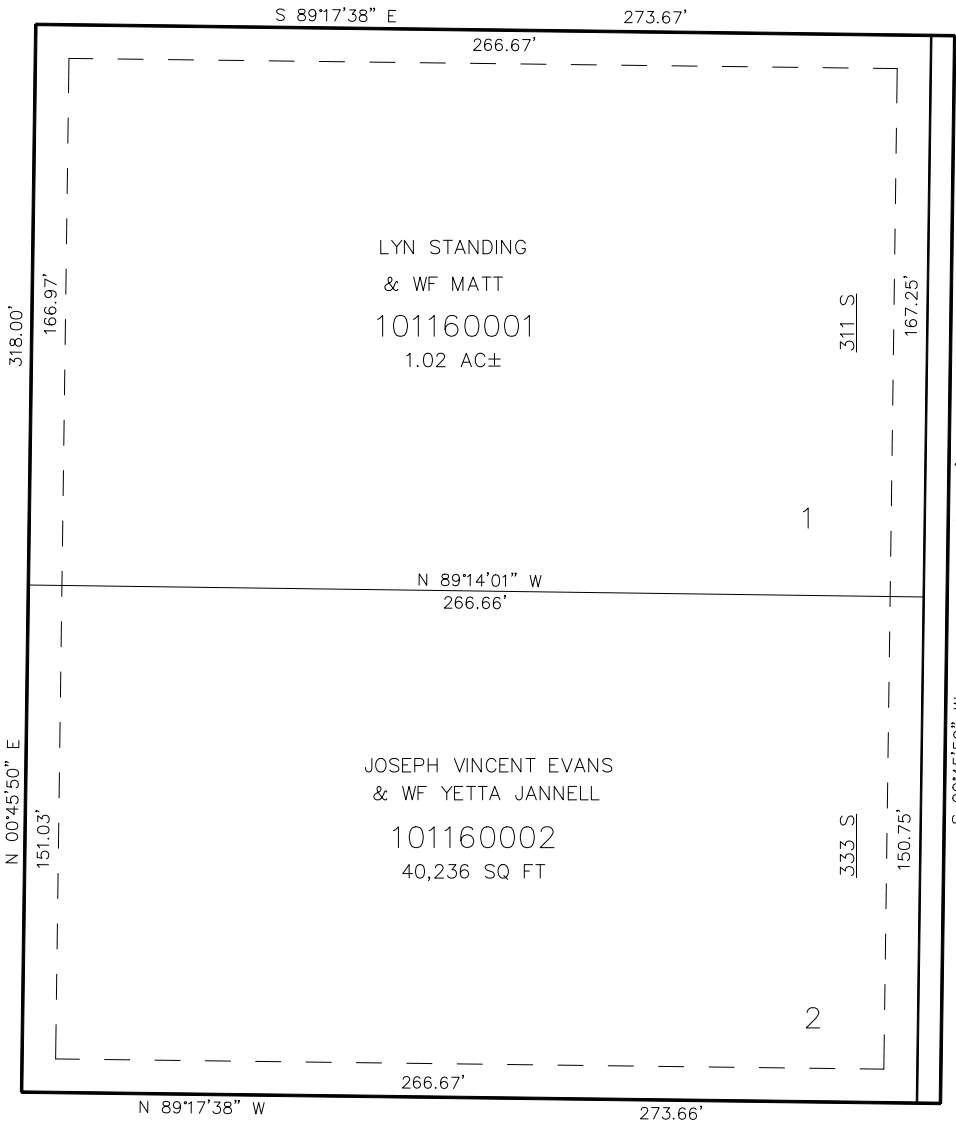


PART OF THE NE.1/4, OF SECTION 13, T.6N., R.3W., S.L.B. & M.  
**FREMONT SUBDIVISION**

IN WEBER COUNTY  
SCALE 1" = 30'

TAXING UNIT: 531

SEE PAGE 35



SEE BOOK 15, PAGE 51

5900 WEST STREET

SEE PAGE 35

SEE PAGE 35

FOR COMPLETE ENG DATA SEE  
ORIGINAL DEDICATION PLAT IN  
BOOK 63, PAGE 39 OF RECORDS.

10' UTILITY & DRAINAGE EASEMENTS EACH  
SIDE OF PROPERTY LINES AS INDICATED  
BY DASHED LINES EXCEPT AS OTHERWISE  
SHOWN.

\*FOR TAX PURPOSES ONLY\*

BK 03-06