



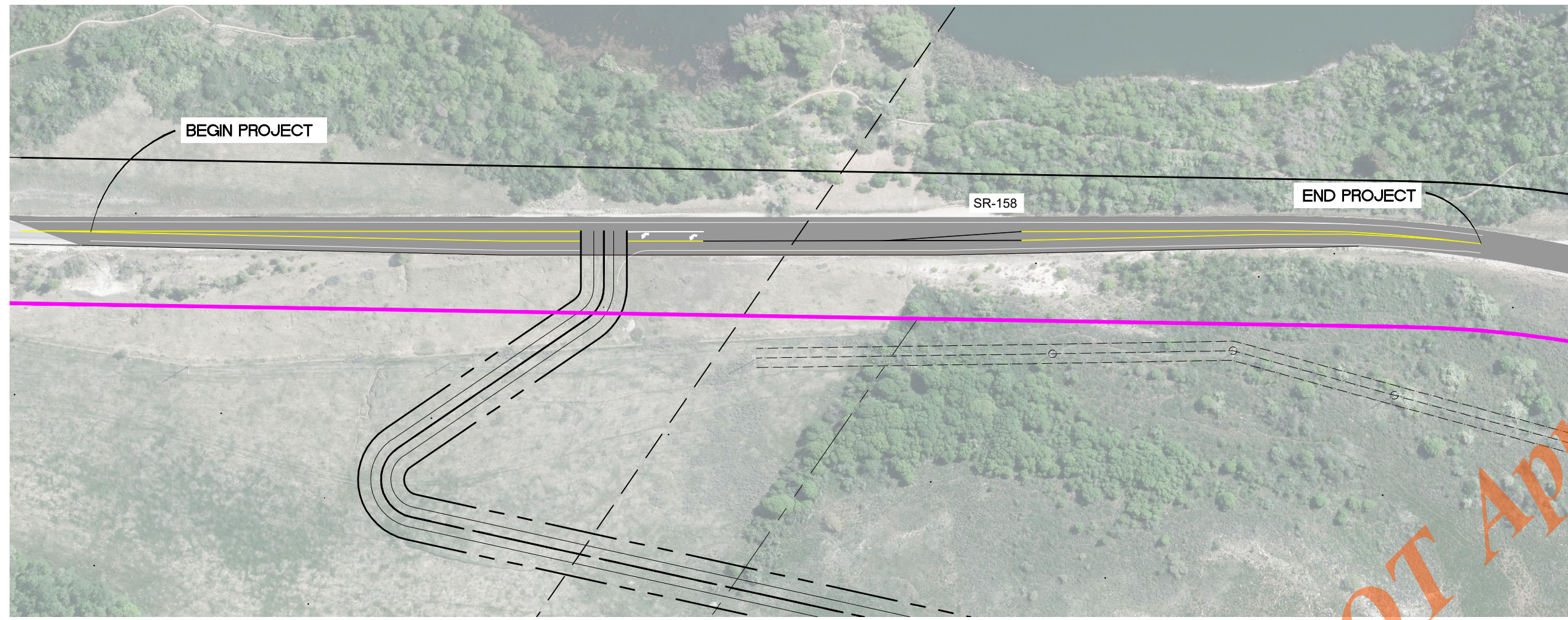
PROJECT LOCATION

OSPREY RANCH

UT-158


SHEET INDEX

C0	COVER SHEET
C1	SITE PLAN
C2	STRIPING PLAN
D1	DETAILS
D2	DETAILS
D3	DETAILS



R:\1201 - LEWIS HOMES\2105 - OSPREY RANCH\DESIGN\DWG\OSPREY UDOT STRIPING.DWG

UDOT APPROVED



Revisions	Date	Description

Date: 10-14-21
 Scale: #####
 Designed: KAN
 Drafted: KAN
 Checked: RC

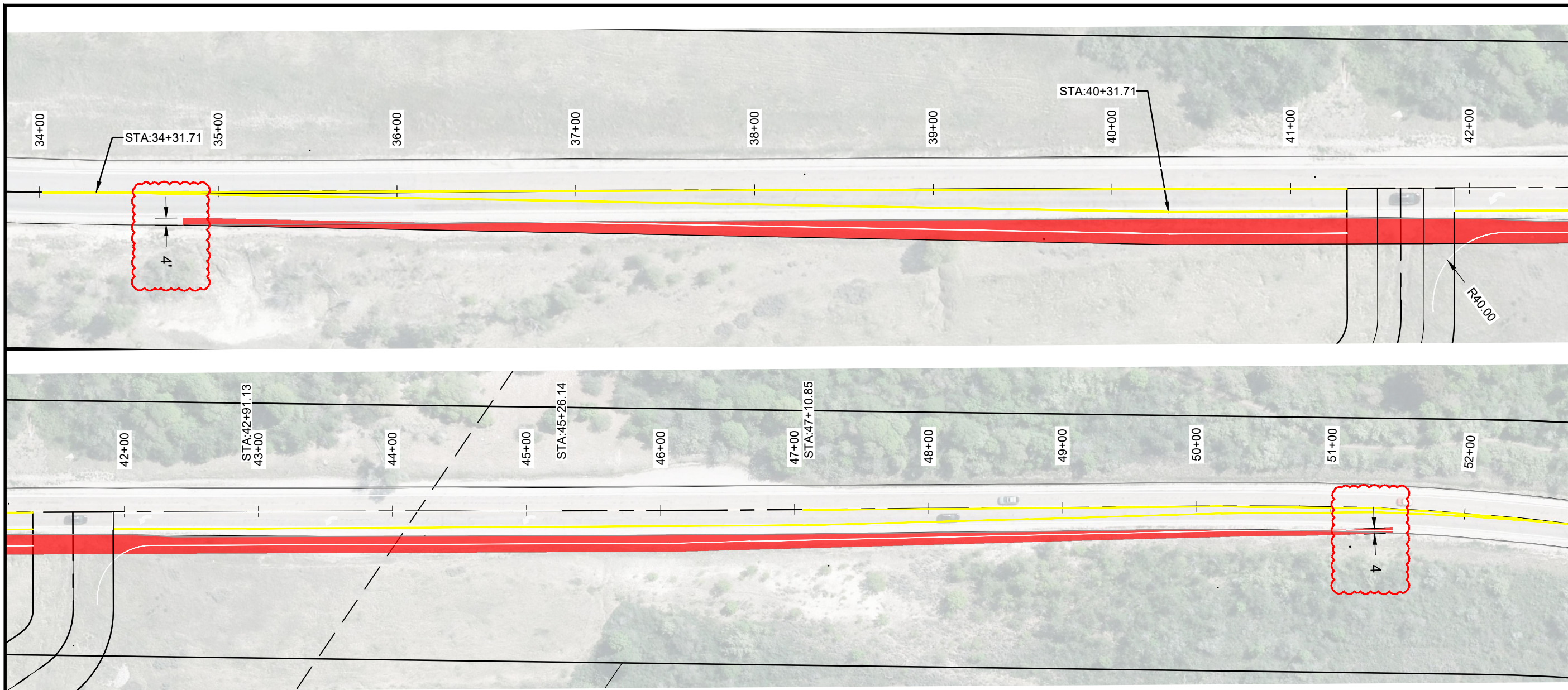
COVER SHEET
 OSPREY RANCH
 UT-158
 EDEN, WEBER, UTAH



GARDNER ENGINEERING
 CIVIL • LAND PLANNING
 MUNICIPAL • LAND SURVEYING
 5150 SOUTH 375 EAST OGDEN, UT
 OFFICE: 801.476.0202 FAX: 801.476.0066

C0
 0

R:\1201 - LEWIS HOMES\2105 - OSPREY RANCH\DESIGN\DWG\OSPREY UDOT STRIPING.DWG

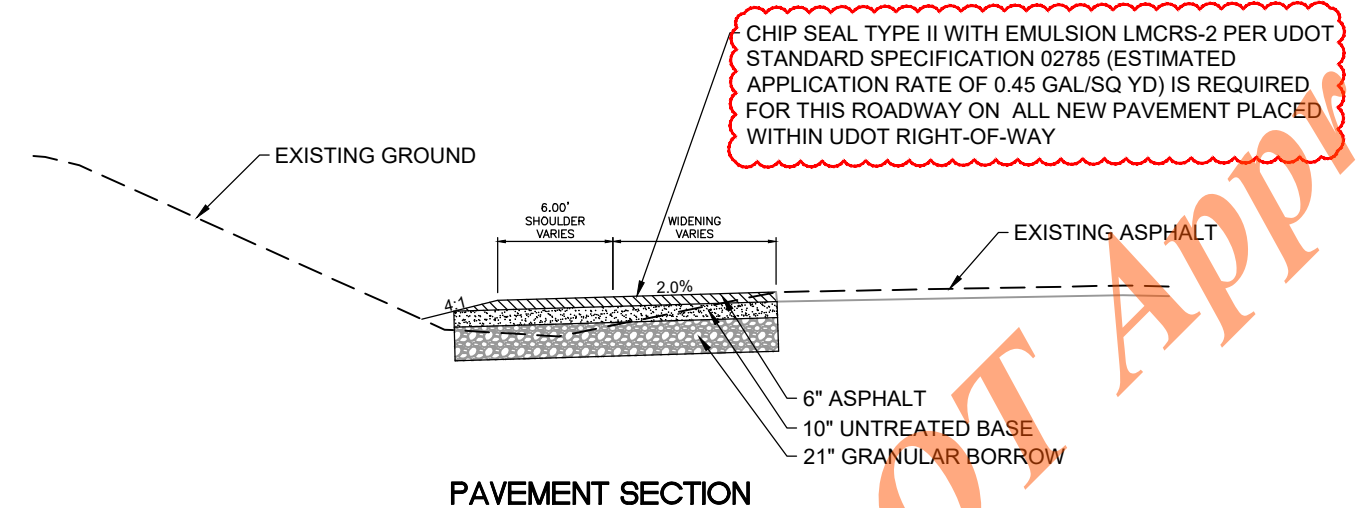


UDOT NOTES:

- ALL CONSTRUCTION WITHIN THE UDOT RIGHT-OF-WAY SHALL CONFORM TO THE MOST CURRENT UDOT STANDARD (INCLUDING SUPPLEMENTAL) DRAWINGS AND SPECIFICATIONS.
- THE CONTRACTOR IS TO OBTAIN AN ENCROACHMENT PERMIT FROM THE APPLICABLE UDOT REGION PERMIT OFFICE PRIOR TO COMMENCING WORK WITHIN UDOT RIGHT-OF-WAY. WORKING HOUR LIMITATIONS WILL BE LISTED IN THE LIMITATIONS SECTION OF THE ENCROACHMENT PERMIT.
- UDOT RESERVES THE RIGHT, AT ITS OPTION, TO INSTALL A RAISED MEDIAN ISLAND OR RESTRICT THE ACCESS TO A RIGHT-IN OR RIGHT-OUT AT ANY TIME.
- OWNER, DEVELOPER, AND CONTRACTOR ARE RESPONSIBLE FOR ANY DAMAGES DIRECTLY OR INDIRECTLY WITHIN THE UDOT RIGHT-OF-WAY AS A RESULT OF DEVELOPMENT ACTIVITIES.
- OWNER, DEVELOPER, AND/OR CONTRACTOR IS REQUIRED TO HIRE AN INDEPENDENT COMPANY FOR ALL TESTING WITHIN THE UDOT RIGHT-OF-WAY.
- ALL SIGNS INSTALLED ON THE UDOT RIGHT-OF-WAY MUST BE HIGH INTENSITY GRADE (TYPE XI SHEETING) WITH A B3 SLIP BASE. INSTALL ALL SIGNS PER UDOT SN SERIES STANDARD DRAWINGS.
- COMPLY WITH THE REQUIREMENTS OF UTAH CODE 17-23-14 (DISTURBED CORNERS - COUNTY SURVEYOR TO BE NOTIFIED - COORDINATION WITH CERTAIN STATE AGENCIES).

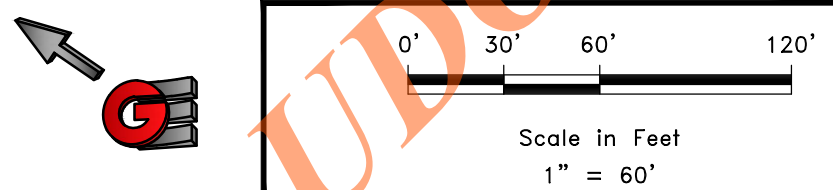
GENERAL NOTES:

- SAW CUT EXISTING EDGE OF ASPHALT AND TACK PER UDOT STANDARDS
- REMOVE EXISTING CENTERLINE STRIPING PER UDOT STANDARDS
- SPEED LIMIT 45 MPH DESIGN 50 MPH



ASPHALT WIDENING

PAVEMENT SECTION



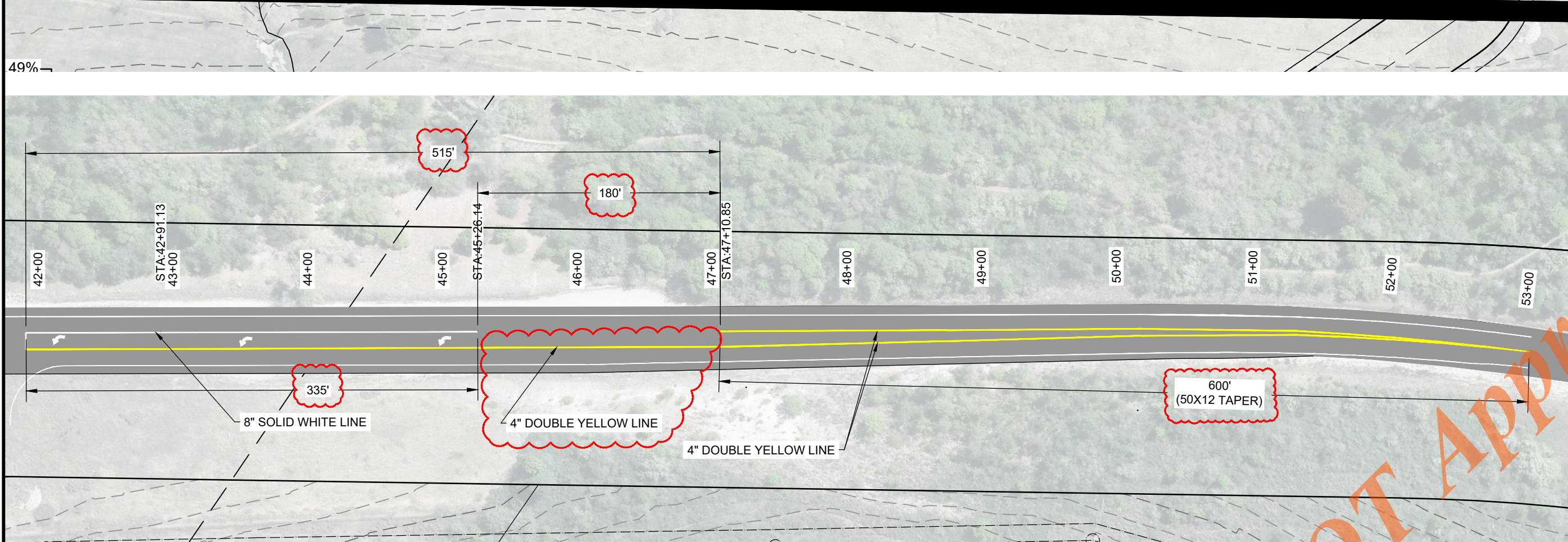
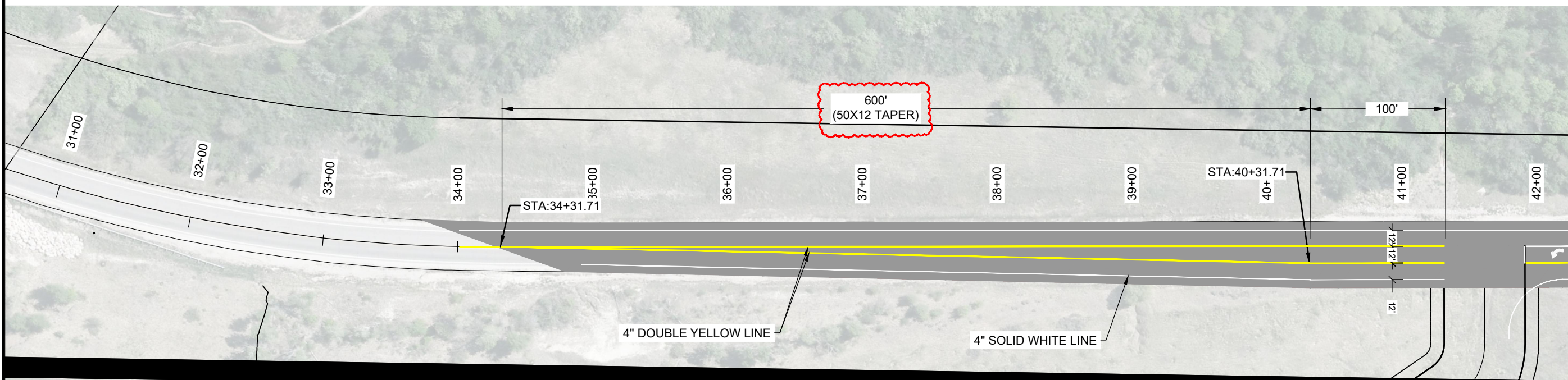
Revisions	
Date	Description

UDOT ACCESS
OSPREY RANCH
UT-158
EDEN, WEBER, UTAH

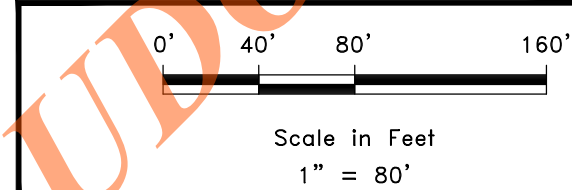
GARDNER ENGINEERING
CIVIL - LAND PLANNING
MUNICIPAL - LAND SURVEYING
5150 SOUTH 375 EAST OGDEN, UT
OFFICE: 801.476.0202 FAX: 801.476.0066

Date: 10-14-21
Scale: 1" = 60'
Designed: KAN
Drafted: KAN
Checked: RC

UDOT ACCESS STRIPING



REMOVE EXISTING CENTER 4" DOUBLE YELLOW LINE PER UDOT STANDARDS SECTION 02765 PAVEMENT MARKING PAINT SECTION 3.4



Revisions	
Date	Description

Date: 10-14-21
Scale: 1" = 80'
Designed: KAN
Drafted: KAN
Checked: RC

UDOT ACCESS STRIPING
 OSPREY RANCH
 UT-158
 EDEN, WEBER, UTAH

GARDNER ENGINEERING
 CIVIL • LAND PLANNING
 MUNICIPAL • LAND SURVEYING
 5150 SOUTH 375 EAST OGDEN, UT
 OFFICE: 801.476.0202 FAX: 801.476.0066

C2
 6

R:\1201 - LEWIS HOMES\2105 - OSPREY RANCH\DESIGN\DWG\OSPREY UDOT STRIPING.DWG