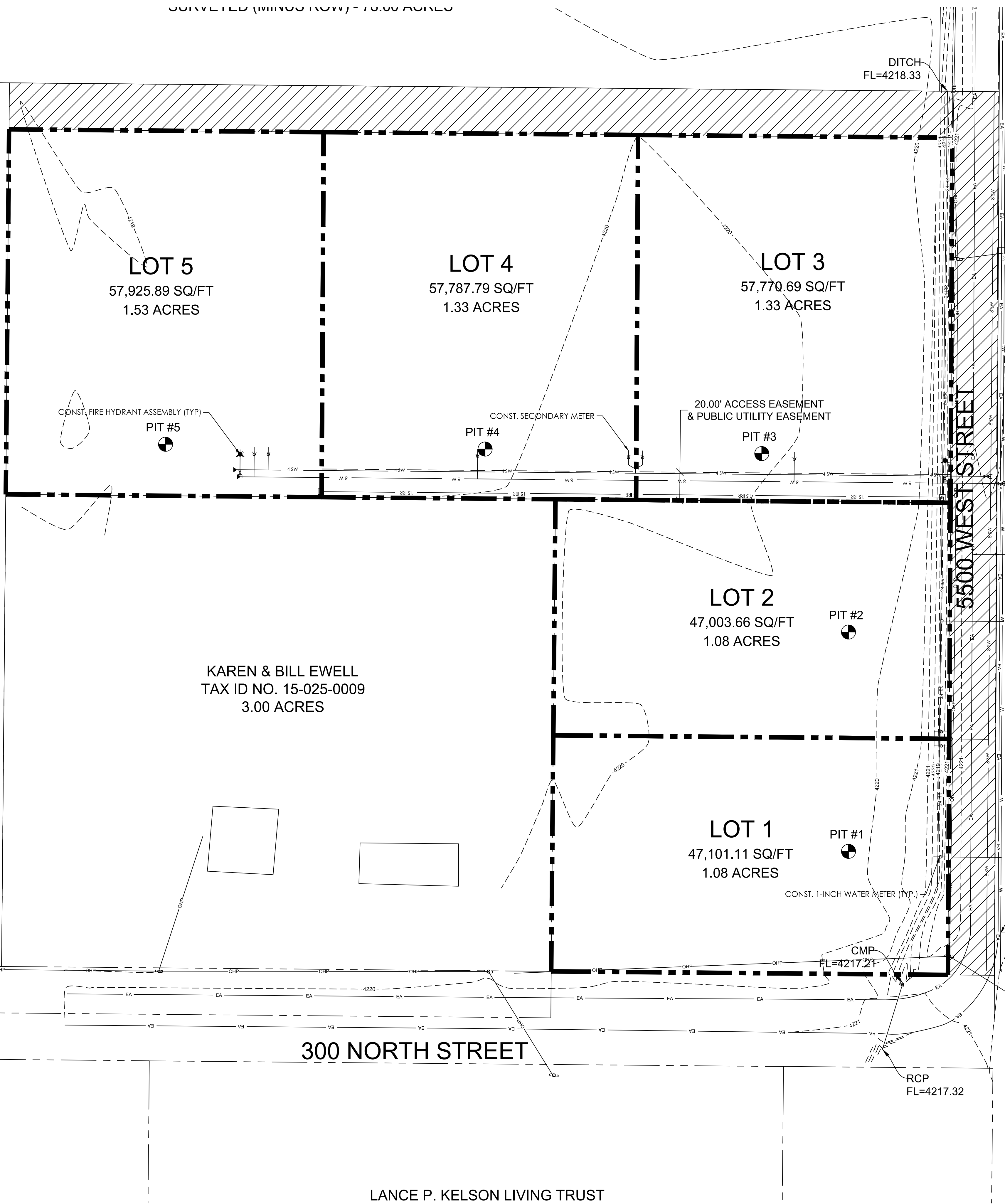


SURVEYED (MINUS ROW) = 70.00 ACRES

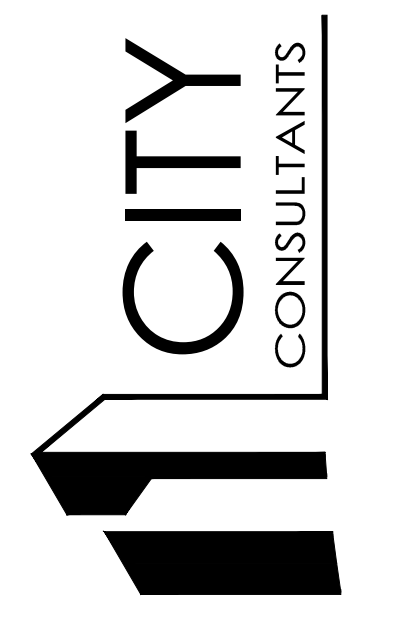
DOUGLAS & CAROLYN HANSEN
TAX ID NO. 15-025-0010
9.50 ACRES

KAREN & BILL EWELL
TAX ID NO. 15-025-0009
3.00 ACRES

LANCE P. KELSON LIVING TRUST



GENERAL NOTES:
1. CURB, GUTTER, SIDEWALK ASPHALT TO BE DEFERRED.



ANGIE'S ACRES
WEBER COUNTY, UTAH
SITE PLAN

REVISION BLOCK	
#	DESCRIPTION
1	
2	
3	
4	
5	
6	

SITE PLAN

Scale: 1"=50' Drawn: GBD
Date: 11/02/20 Job #:
Sheet: