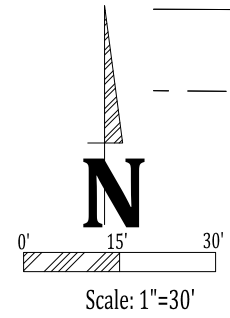
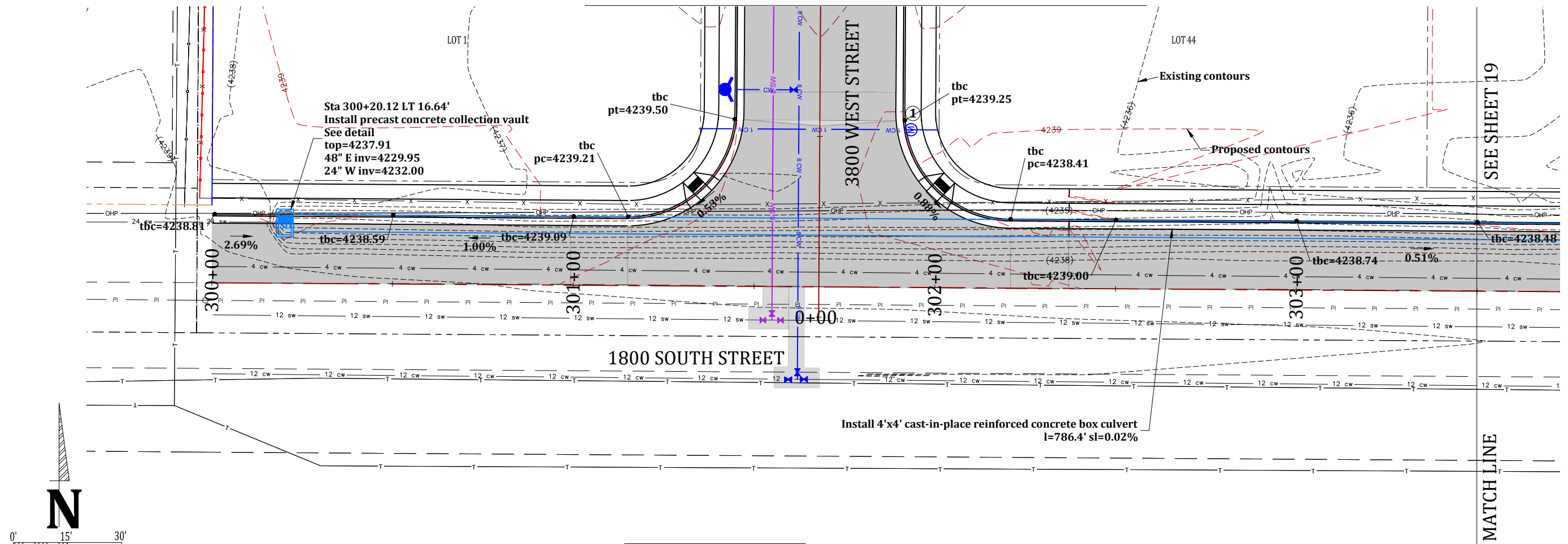
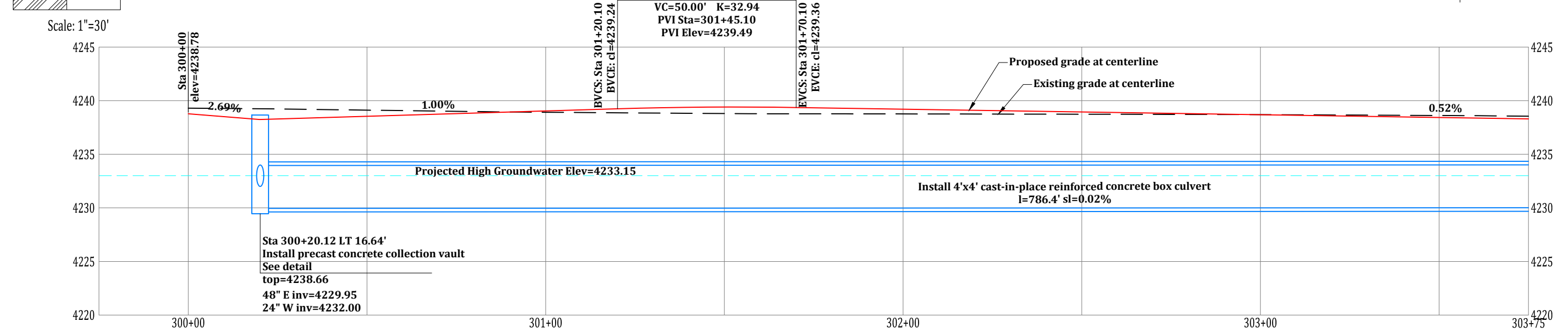


SEE SHEET 9 FOR 3800 WEST STREET IMPROVEMENTS



SEE SHEET 19

MATCH LINE

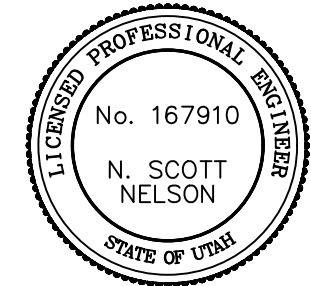


- CONSTRUCTION NOTES:**
1. Construct 1" copper water lateral and meter box (typical).
 2. Install 4" pvc sanitary sewer lateral (typical) sl=2% minimum.
 3. Double service meter (typical). Install 1-1/2" CTS poly secondary water lateral.
 4. Install service meter (typical). Install 1-1/2" CTS poly secondary water lateral.

Approved for Construction
 Weber City Engineer
 Date: _____

Developer:
 Pat Burns
 Lync Construction
 801-710-2234

The Geotechnical Report provided by: CMT Engineering Laboratories (Project No. 10878, Dated March 7, 2018) has critical information in regards to this project and must be followed.



Project: **IMPROVEMENTS STAGECOACH ESTATES WEBER COUNTY, UTAH**

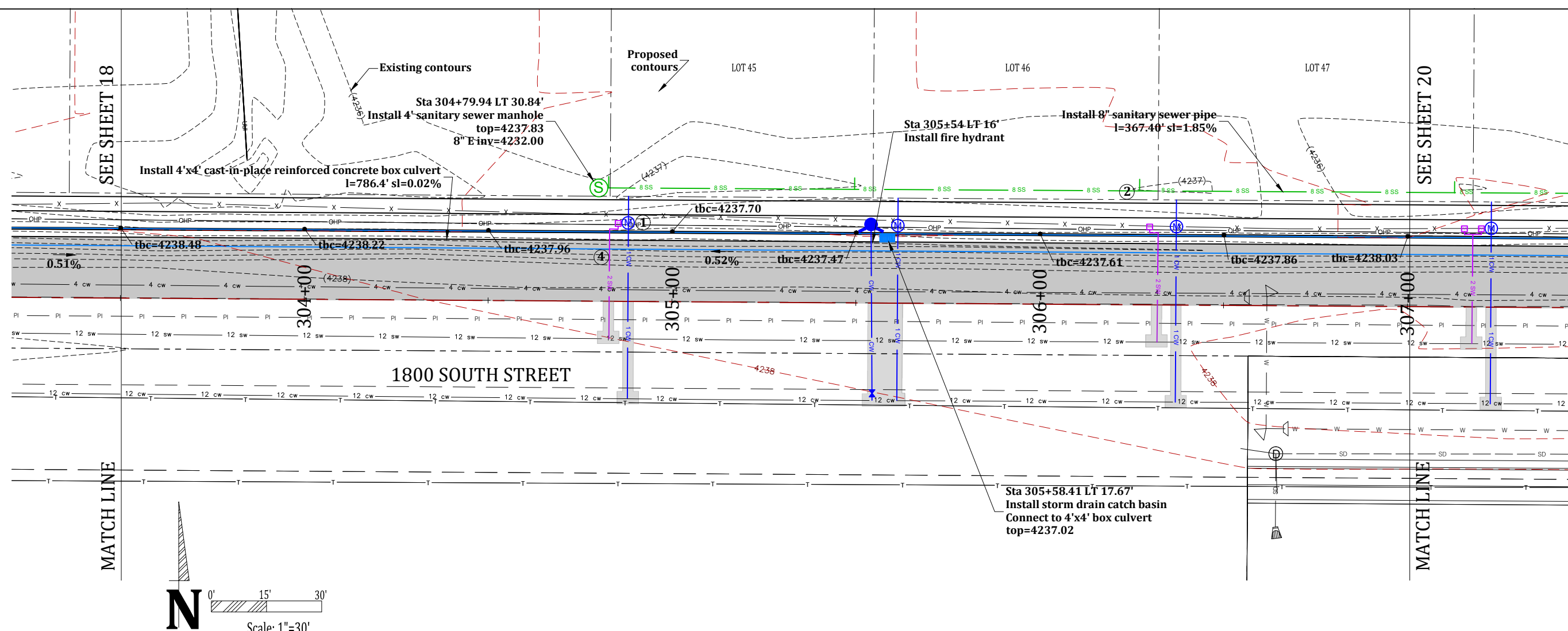
Title: **1800 SOUTH STREET PLAN & PROFILE: STA 300+00 - 303+50**

Date: 15 OCTOBER 2021

NOT FOR CONSTRUCTION

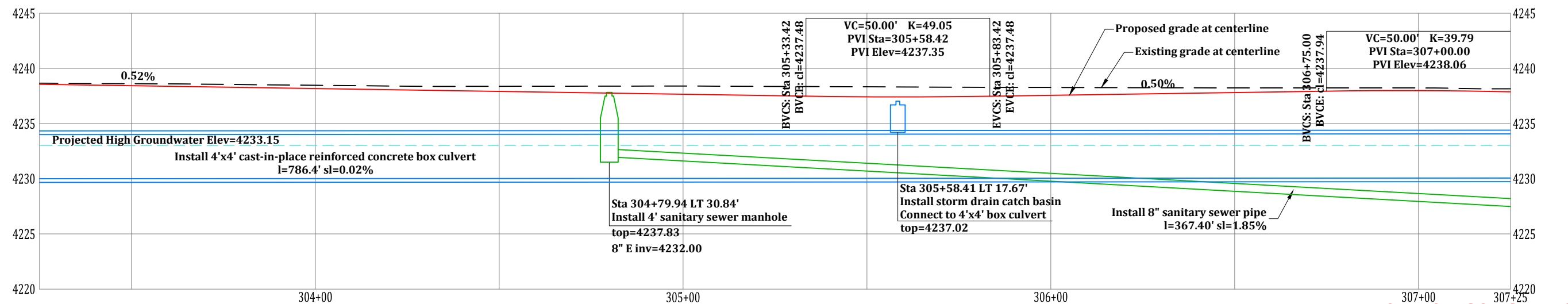
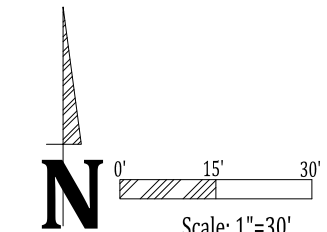
Prepared By:
 Summers Engineering Collective
 - Jen Summers -
 Summers.eng.collective@gmail.com

#	Date	Revision



MATCH LINE

MATCH LINE



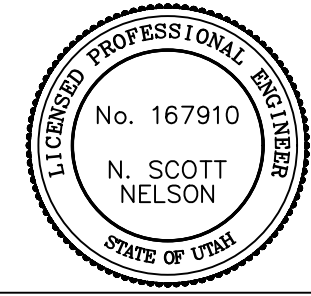
NOT FOR CONSTRUCTION

- CONSTRUCTION NOTES:**
- Construct 1" copper water lateral and meter box (typical).
 - Install 4" pvc sanitary sewer lateral (typical) sl=2% minimum.
 - Double service meter (typical). Install 1-1/2" CTS poly secondary water lateral.
 - Install service meter (typical). Install 1-1/2" CTS poly secondary water lateral.

Approved for Construction
 Weber City Engineer
 Date: _____

Developer:
 Pat Burns
 Lync Construction
 801-710-2234

The Geotechnical Report provided by: CMT Engineering Laboratories (Project No. 10878, Dated March 7, 2018) has critical information in regards to this project and must be followed.



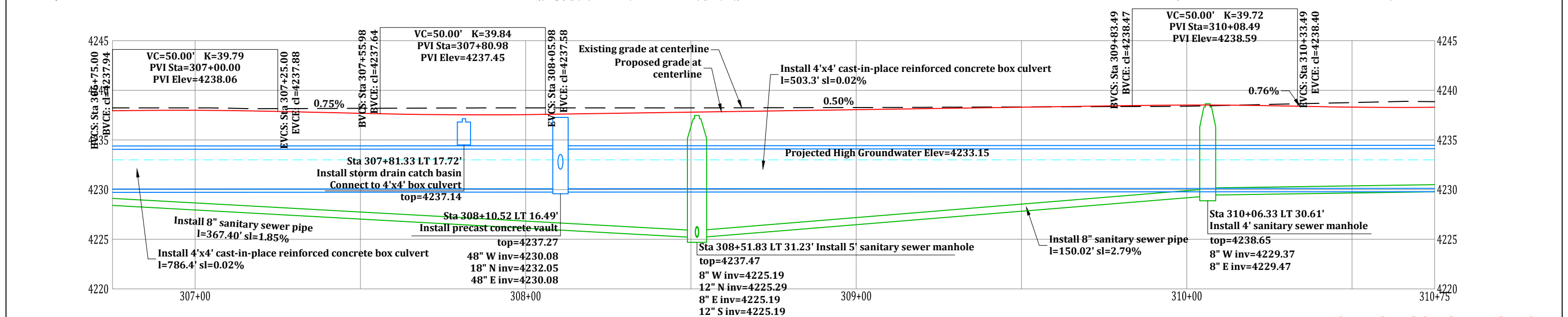
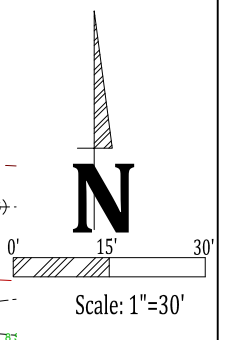
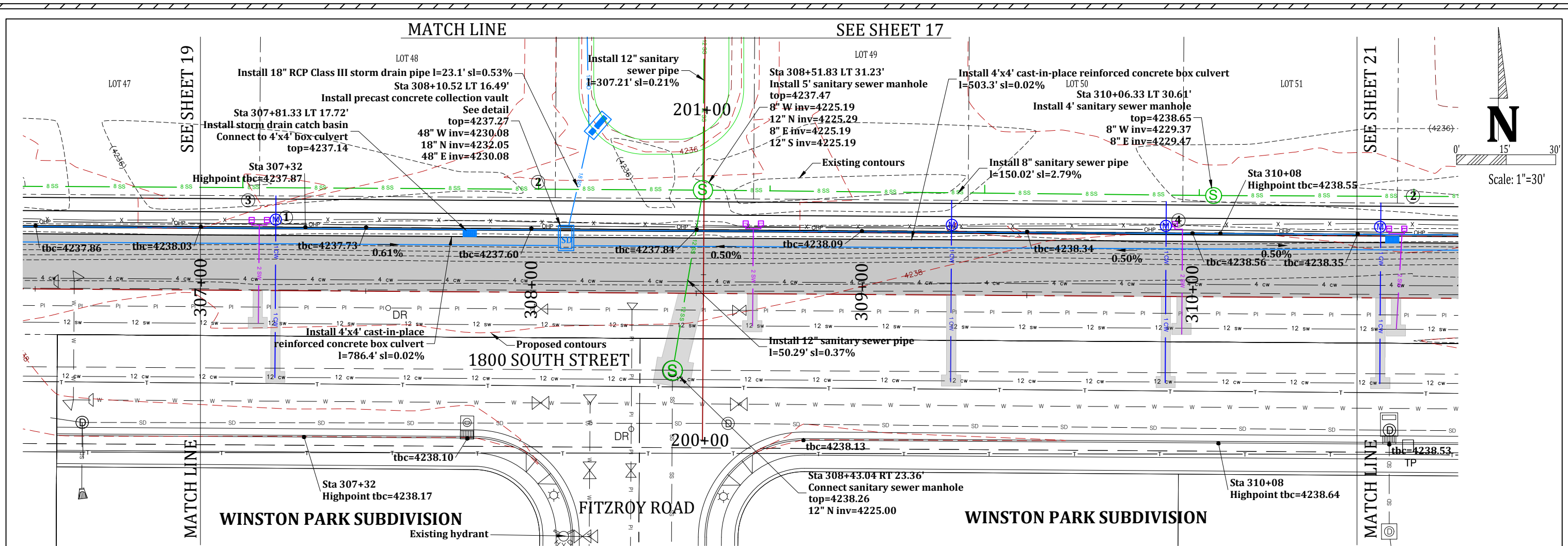
Project: **IMPROVEMENTS STAGECOACH ESTATES WEBER COUNTY, UTAH**

Title: **1800 SOUTH STREET PLAN & PROFILE: STA 303+50 - 307+00**

Date: 15 OCTOBER 2021

Prepared By: **Summers Engineering Collective**
 - Jen Summers -
 Summers.eng.collective@gmail.com

#	Date	Revision

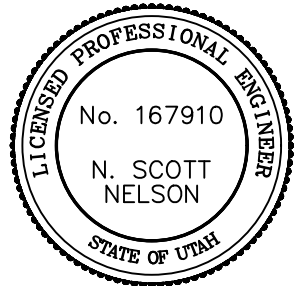


- CONSTRUCTION NOTES:**
- Construct 1" copper water lateral and meter box (typical).
 - Install 4" pvc sanitary sewer lateral (typical) sl=2% minimum.
 - Double service meter (typical). Install 1-1/2" CTS poly secondary water lateral.
 - Install service meter (typical). Install 1-1/2" CTS poly secondary water lateral.

Approved for Construction
 Weber City Engineer
 Date: _____

Developer:
 Pat Burns
 Lync Construction
 801-710-2234

The Geotechnical Report provided by: CMT Engineering Laboratories (Project No. 10878, Dated March 7, 2018) has critical information in regards to this project and must be followed.



Project: **IMPROVEMENTS STAGECOACH ESTATES WEBER COUNTY, UTAH**

Title: **1800 SOUTH STREET PLAN & PROFILE: STA 307+00 - 310+50**

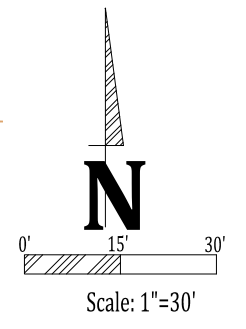
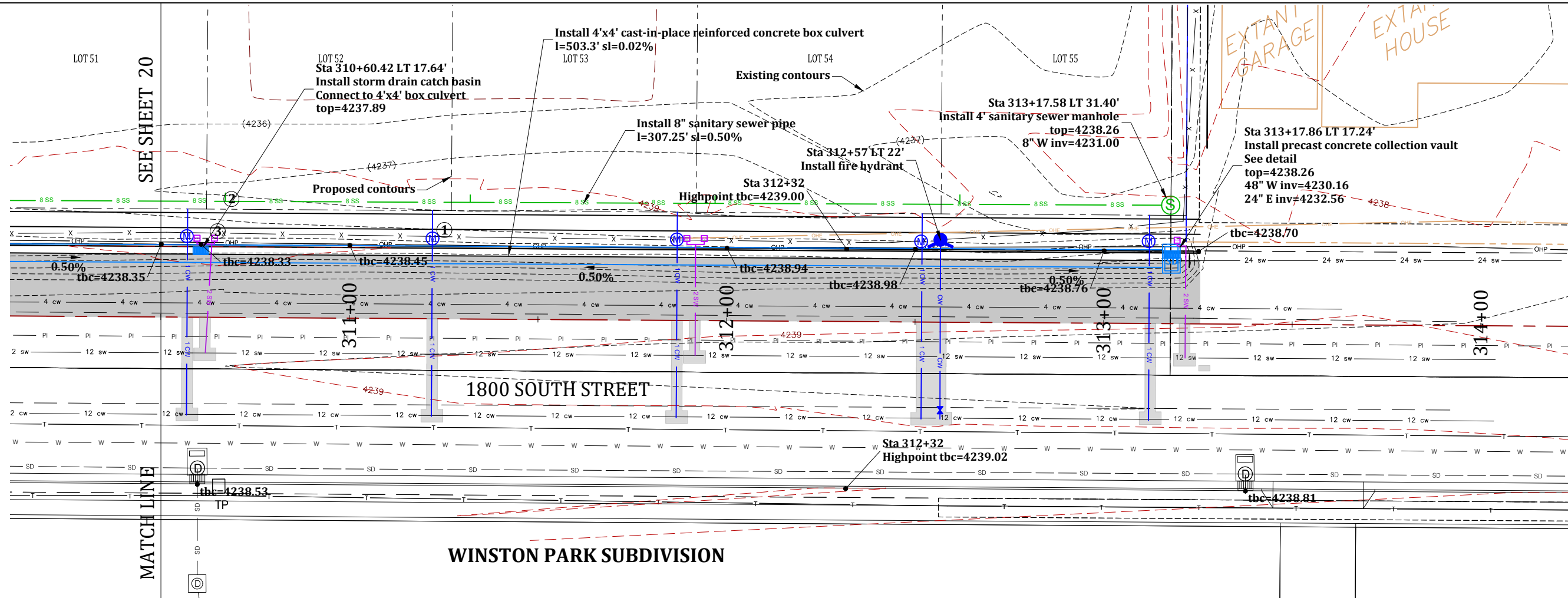
Date: 15 OCTOBER 2021

Sheet 20 of 20

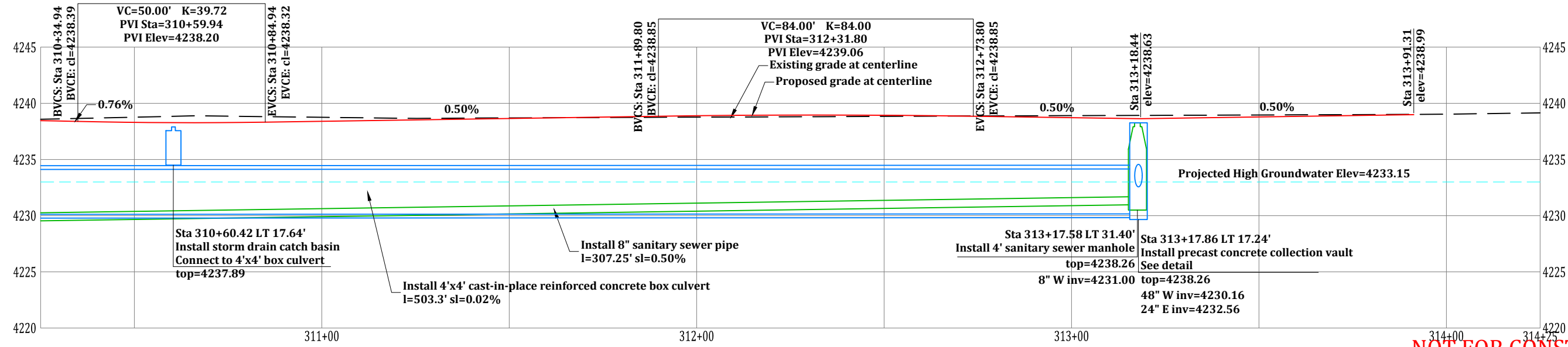
NOT FOR CONSTRUCTION

Prepared By: **Summers Engineering Collective**
 - Jen Summers -
 Summers.eng.collective@gmail.com

#	Date	Revision



WINSTON PARK SUBDIVISION



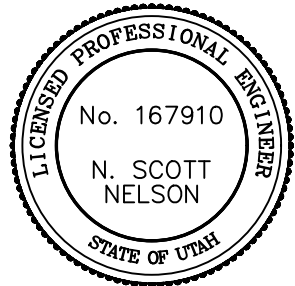
NOT FOR CONSTRUCTION

- CONSTRUCTION NOTES:**
- Construct 1" copper water lateral and meter box (typical).
 - Install 4" pvc sanitary sewer lateral (typical) sl=2% minimum.
 - Double service meter (typical). Install 1-1/2" CTS poly secondary water lateral.
 - Install service meter (typical). Install 1-1/2" CTS poly secondary water lateral.

Approved for Construction
 Weber City Engineer
 Date: _____

Developer:
 Pat Burns
 Lync Construction
 801-710-2234

The Geotechnical Report provided by: CMT Engineering Laboratories (Project No. 10878, Dated March 7, 2018) has critical information in regards to this project and must be followed.



Project: IMPROVEMENTS STAGECOACH ESTATES WEBER COUNTY, UTAH		Prepared By: Summers Engineering Collective - Jen Summers - Summers.eng.collective@gmail.com	
Title: 1800 SOUTH STREET PLAN & PROFILE: STA 310+50 - 314+00		# Date: Revision:	
Date: 15 OCTOBER 2021		Sheet 21 of 20	