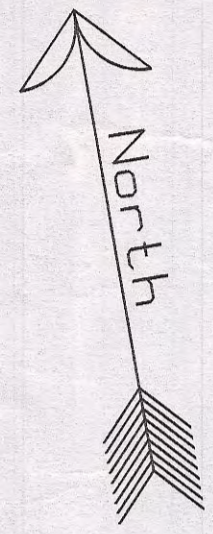


SWPPP

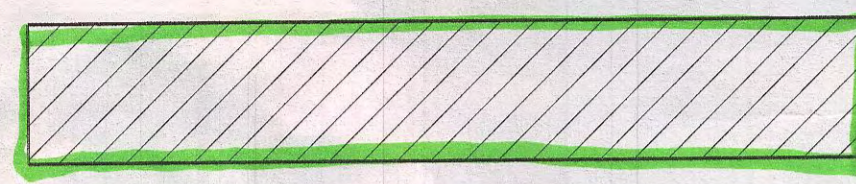
Mortensen Residence
825 Ogden Canyon Road
Weber County, Utah
Lots #10, 11, 12 Idlewild Townsite
Land Serial # 200220007

Area: 12232 Sq. Ft.
.28 Acres

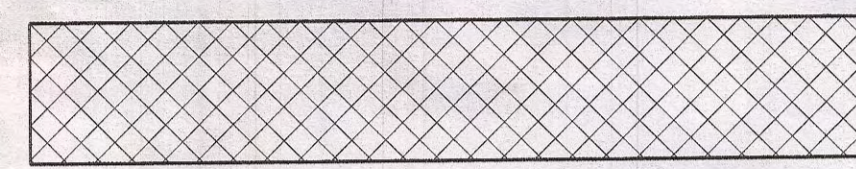
Scale: 1" = 10'



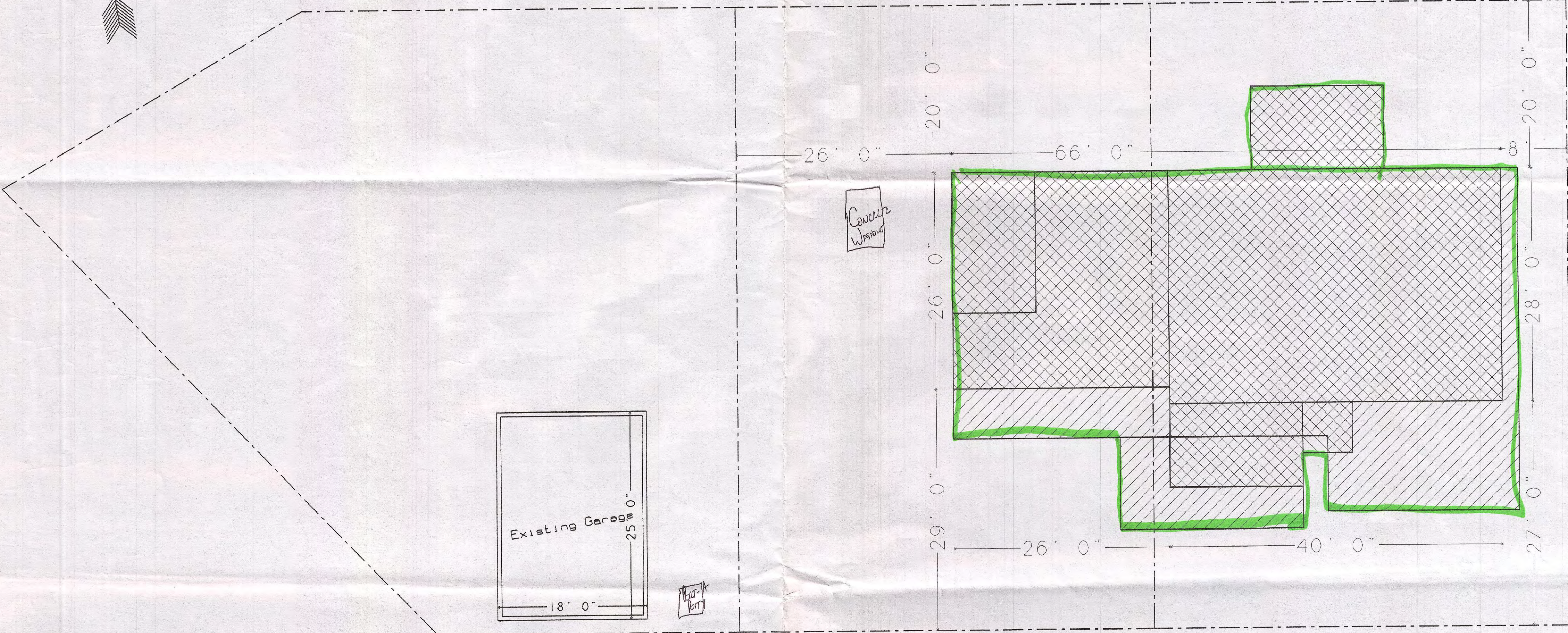
----- Property Line



Original Home Footprint



New Home Footprint



1. 2366 ft
2. Ridgeview Homes (SOI) 671-3079
3. Provide Clear Work Conditions / Clean-Up Daily
4. Replaced Around Home
5. See Above / Cleaned When Needed
6. See Above
7. Already Built
8. Sweep
9. Yes - Concrete Barrier To Retain
10. Flows To River
11. See Above