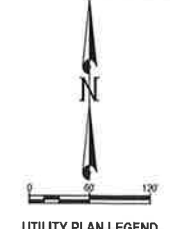
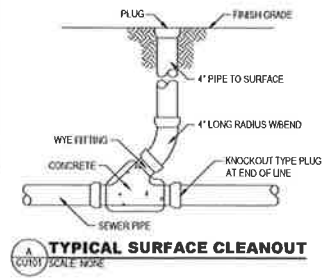
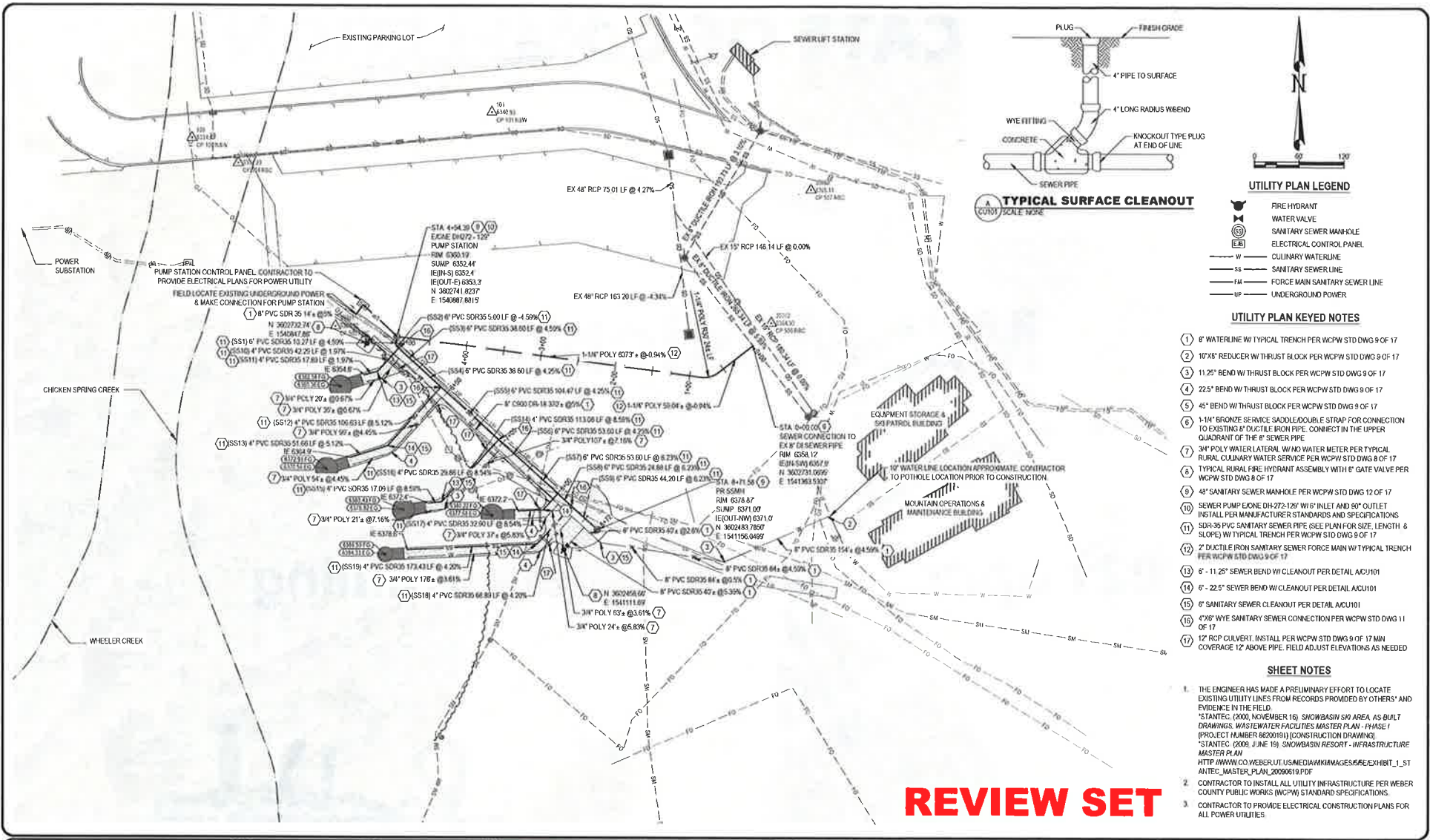


File Path: P:\2021-2025\2025\muckam-glamping-master-dwg\Drawings\06\EE\0001\01.dwg Oct 08, 2021 - 7:05am



- UTILITY PLAN KEYED NOTES**
- 1) 8" WATERLINE W/ TYPICAL TRENCH PER WCPW STD DWG 9 OF 17
 - 2) 10"x8" REDUCER W/ THRUST BLOCK PER WCPW STD DWG 9 OF 17
 - 3) 11.25" BEND W/ THRUST BLOCK PER WCPW STD DWG 9 OF 17
 - 4) 22.5" BEND W/ THRUST BLOCK PER WCPW STD DWG 9 OF 17
 - 5) 45" BEND W/ THRUST BLOCK PER WCPW STD DWG 9 OF 17
 - 6) 1-1/4" BRONZE SERVICE SADDLE/DOUBLE STRAP FOR CONNECTION TO EXISTING 8" DUCTILE IRON PIPE. CONNECT IN THE UPPER QUADRANT OF THE 8" SEWER PIPE
 - 7) 3/4" POLY WATER LATERAL W/ NO WATER METER PER TYPICAL RURAL CULINARY WATER SERVICE PER WCPW STD DWG 8 OF 17
 - 8) TYPICAL RURAL FIRE HYDRANT ASSEMBLY WITH 8" GATE VALVE PER WCPW STD DWG 8 OF 17
 - 9) 48" SANITARY SEWER MANHOLE PER WCPW STD DWG 12 OF 17
 - 10) SEWER PUMP EONE 04-272-128" W/ 6" INLET AND 80" OUTLET. INSTALL PER MANUFACTURER STANDARDS AND SPECIFICATIONS
 - 11) SDR-35 PVC SANITARY SEWER PIPE (SEE PLAN FOR SIZE, LENGTH & SLOPE) W/ TYPICAL TRENCH PER WCPW STD DWG 9 OF 17
 - 12) 2" DUCTILE IRON SANITARY SEWER FORCE MAIN W/ TYPICAL TRENCH PER WCPW STD DWG 9 OF 17
 - 13) 6" - 11.25" SEWER BEND W/ CLEANOUT PER DETAIL ACU101
 - 14) 6" - 22.5" SEWER BEND W/ CLEANOUT PER DETAIL ACU101
 - 15) 6" SANITARY SEWER CLEANOUT PER DETAIL ACU101
 - 16) 4"x6" WYE SANITARY SEWER CONNECTION PER WCPW STD DWG 11 OF 17
 - 17) 12" RCP CULVERT. INSTALL PER WCPW STD DWG 9 OF 17 MIN. COVERAGE 12" ABOVE PIPE. FIELD ADJUST ELEVATIONS AS NEEDED

- SHEET NOTES**
1. THE ENGINEER HAS MADE A PRELIMINARY EFFORT TO LOCATE EXISTING UTILITY LINES FROM RECORDS PROVIDED BY OTHERS' AND EVIDENCE IN THE FIELD. *STANTEC. (2000, NOVEMBER 16) SNOWBASIN SKI AREA AS BUILT DRAWINGS, WASTEWATER FACILITIES MASTER PLAN - PHASE I (PROJECT NUMBER 86200191) (CONSTRUCTION DRAWINGS) *STANTEC. (2008, JUNE 19) SNOWBASIN RESORT - INFRASTRUCTURE MASTER PLAN [HTTP://WWW.CO.WEBER.UT.US/MEDIA/WIKIMEDIA/IMAGES/6/6E/EXHIBIT_1_STANTEC_MASTER_PLAN_20090619.PDF](http://www.co.weber.ut.us/media/wikimedia/images/6/6E/EXHIBIT_1_STANTEC_MASTER_PLAN_20090619.PDF)
 2. CONTRACTOR TO INSTALL ALL UTILITY INFRASTRUCTURE PER WEBER COUNTY PUBLIC WORKS (WCPW) STANDARD SPECIFICATIONS.
 3. CONTRACTOR TO PROVIDE ELECTRICAL CONSTRUCTION PLANS FOR ALL POWER UTILITIES.

REVIEW SET

IF THE FORMER SCALE AND DATE OF THE DRAWING FOR RECORD PURPOSES, EXAMINATION AND REVISIONS SPECIFIED BY THE DRAWING TIME PROCEEDED TO THE NEXT REVISION.

THE INFORMATION CONTAINED BY THIS DOCUMENT IS THE PROPERTY OF CRS ENGINEERS AND IS NOT TO BE REPRODUCED, MOORED OR LOANED FOR ANY OTHER PROJECT OR EXTENSION OF THE PROJECT EXCEPT BY AGREEMENT WITH CRS ENGINEERS.

CRS ENGINEERS
D. CYRUS, PE
G. NELSON, PE
D. EYRE, PE
P. BAILEY
1" = 8'
OCTOBER 5, 2021

CRS ENGINEERS
Answers to Infrastructure®

2425 S Riverboat Rd, Ste 200 | Salt Lake City, UT 84123 | P. 801.359.5555 | www.crsengineers.com

SNOWBASIN RESORT
SNOWBASIN GLAMPING DESIGN
UTILITY PLAN

2021-0176

7	10
---	----

CU101

2021-0176

7	10
---	----

CU101