

Green Hill Country Estates Phase No. 6

A Cluster Type Subdivision
A part of Sections 3, 4, 9, & 10, T6N, R2E, SLB&M, U.S. Survey
Weber County, Utah

S 89°24'10" E

2605.12'

660.00'



Scale: 1" = 100'

NOTE
10' Utility and Drainage Easements each side of Property Line as indicated by dashed lines, except as otherwise shown.

S 89°55'43" E 2621.04'

Property Line Curve Data

(14) Δ = 30°53'23" R = 246.46' L = 132.87' LC = 131.27' N 2°24'06" W	(23) Δ = 53°14'58" R = 55.00' L = 51.12' LC = 49.30' S 31°13'33" W	(32) Δ = 5°29'24" R = 978.89' L = 93.78' LC = 93.74' N 46°44'50" E
(15) Δ = 28°14'43" R = 199.01' L = 98.11' LC = 97.12' S 5°43'26" E	(24) Δ = 59°23'41" R = 35.00' L = 57.02' LC = 54.50' S 87°32'52" W	(33) Δ = 9°26'32" R = 389.52' L = 63.53' LC = 63.46' S 44°46'16" W
(16) Δ = 18°23'12" R = 199.01' L = 63.67' LC = 63.59' S 19°35'32" W	(25) Δ = 54°04'17" R = 35.00' L = 51.91' LC = 50.00' N 35°43'09" W	(34) Δ = 11°15'52" R = 389.52' L = 75.79' LC = 75.67' S 34°23'04" W
(17) Δ = 6°03'56" R = 435.52' L = 46.11' LC = 46.09' S 51°49'06" W	(26) Δ = 64°20'12" R = 55.00' L = 61.76' LC = 58.37' N 23°29'06" E	(35) Δ = 48°37'55" R = 149.01' L = 121.28' LC = 117.96' S 5°28'10" W
(18) Δ = 14°38'28" R = 435.52' L = 111.29' LC = 110.99' S 42°10'18" W	(27) Δ = 48°18'27" R = 55.00' L = 46.37' LC = 45.01' N 79°48'25" E	(36) Δ = 30°53'23" R = 296.46' L = 159.83' LC = 157.90' N 2°24'06" W
(19) Δ = 11°58'19" R = 928.69' L = 194.05' LC = 193.70' N 43°30'23" E	(28) Δ = 49°40'47" R = 30.00' L = 26.01' LC = 25.21' S 79°07'15" W	
(20) Δ = 5°47'24" R = 2002.42' L = 202.36' LC = 202.27' S 40°24'56" W	(29) Δ = 10°58'14" R = 1016.35' L = 194.60' LC = 194.31' S 48°47'45" W	
(21) Δ = 10°58'14" R = 1066.35' L = 204.18' LC = 203.86' S 48°47'45" W	(30) Δ = 5°47'24" R = 1952.42' L = 197.30' LC = 197.22' S 40°24'56" W	
(22) Δ = 49°40'47" R = 30.00' L = 26.01' LC = 25.21' N 28°26'28" E	(31) Δ = 8°28'55" R = 978.89' L = 110.79' LC = 110.66' N 40°45'41" E	

Street Centerline Curve Data

(k) Δ = 30°53'23" R = 271.46' L = 146.35' LC = 144.38' N 2°24'06" W T = 75.00'	(r) Δ = 11°58'19" R = 953.69' L = 199.27' LC = 198.91' N 43°30'23" E T = 100.00'
(m) Δ = 48°57'55" R = 174.01' L = 141.63' LC = 137.75' S 5°28'10" W T = 75.00'	(a) Δ = 5°47'24" R = 1977.42' L = 199.85' LC = 199.75' S 40°24'56" W T = 100.00'
(n) Δ = 20°42'24" R = 410.52' L = 148.36' LC = 147.56' S 59°08'20" W T = 75.00'	(r) Δ = 10°58'14" R = 1041.35' L = 199.39' LC = 199.08' S 48°47'45" W T = 100.00'

Common Area "K"

Legend

- = Set Hub and Tack
- ⊙ = Set 5/8" Rebar, Cap & Fencepost
- ⊕ = Location of street monument to be set.

Note:

Refer to AGEC Slope Stability Report dated July 1998, on file at the County Recorder's Office.

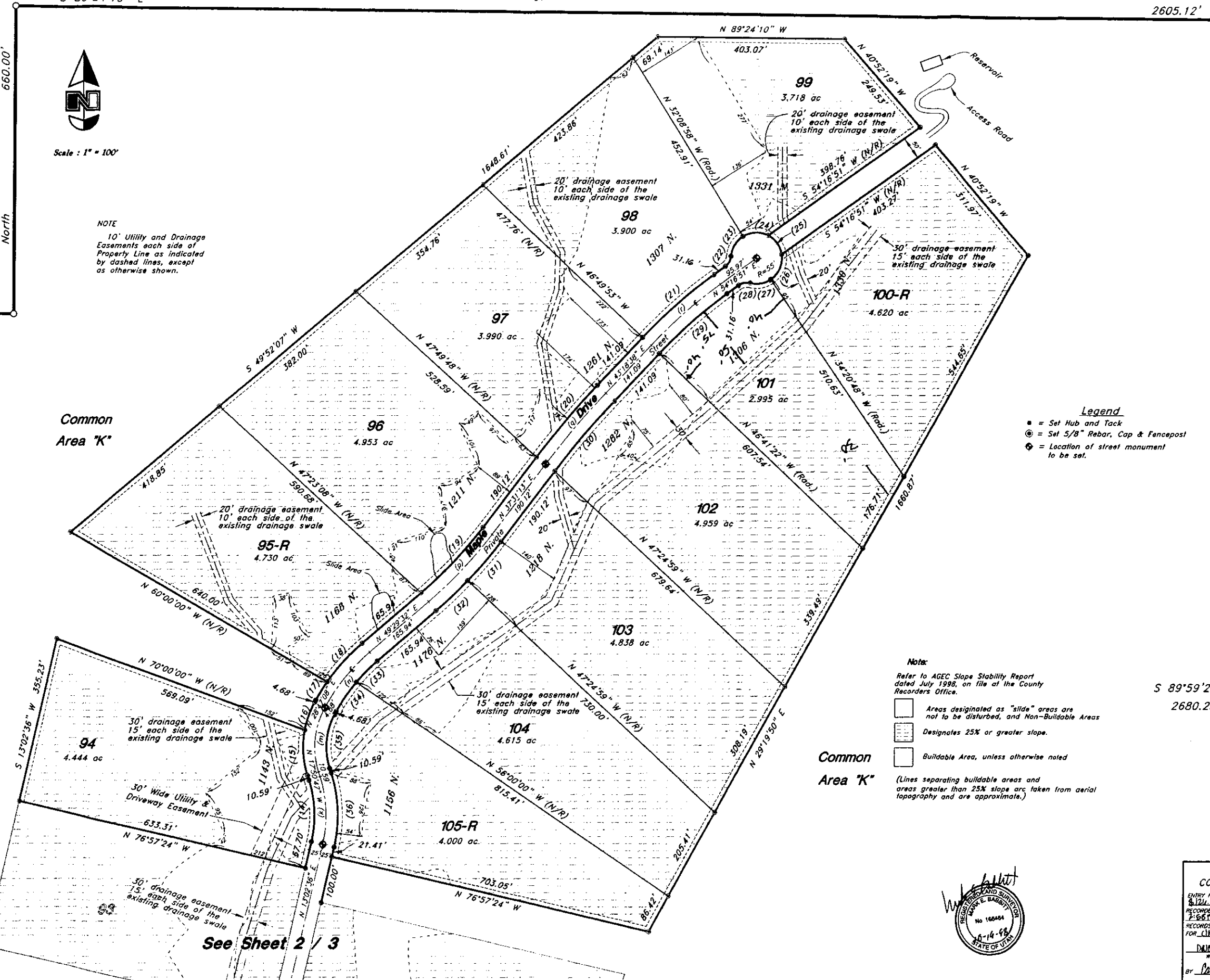
- Areas designated as "slide" areas are not to be disturbed, and Non-Buildable Areas
- Designates 25% or greater slope.
- Buildable Area, unless otherwise noted

(Lines separating buildable areas and areas greater than 25% slope are taken from aerial topography and are approximate.)

Common Area "K"

S 89°59'29" E
2680.23'

South



See Sheet 2 / 3

GREAT BASIN ENGINEERING NORTH
CONSULTING ENGINEERS AND SURVEYORS
3544 Lincoln Avenue, Ogden, Utah, 84401
P.O. Box 9107, Ogden, Utah, 84409
Phone: (801) 224-4311 Fax: (801) 221-0522

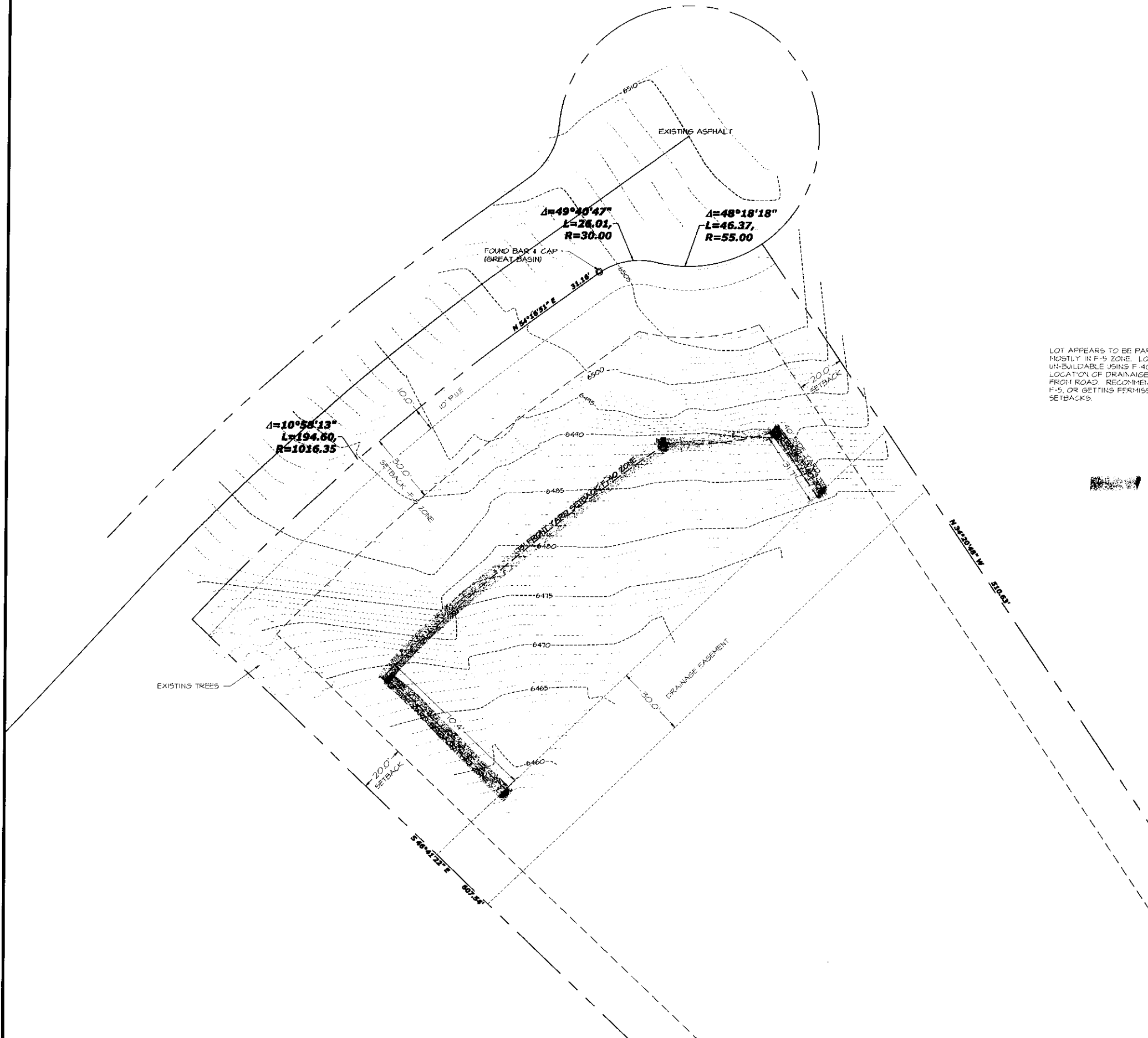


WEBER COUNTY RECORDER
ENTRY NO. 166484
FILED FOR RECORD AND RECORDED IN BOOK 44 OF OFFICIAL RECORDS PAGE 102 RECORDED FOR CLAYTON H. HIND
DAVID CRUTTS
WEBER COUNTY RECORDER
By: *Pamela Warner*
DEPUTY

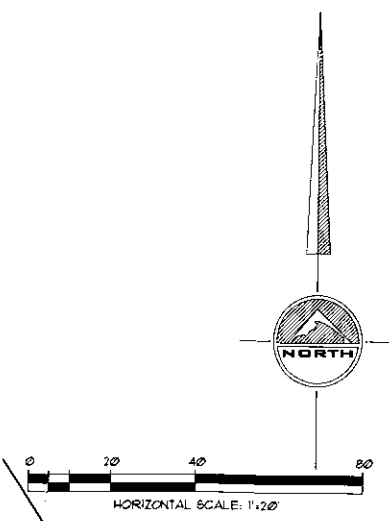
SEAL:

LEGEND
NOT ALL ITEMS IN THE LEGEND MAY BE APPLICABLE

---	BOUNDARY LINE
---	SECTION LINE
---	CENTERLINE
---	EXISTING DEED LINE
---	ADJACENT PROPERTY LINE
-X-	EXISTING FENCE LINE
-X-	EXISTING DITCH LINE
-X-	EX. OVERHEAD POWER LINE
-X-	EX. STORM DRAIN
-X-	EX. SANITARY SEWER LINE
-X-	EX. CONCRETE
+	SECTION CORNER
+	CENTERLINE MONUMENT
+	BAR & CAP TO BE SET STAMPED 'SILVERPEAK ENG'
---	EXISTING ASPHALT



F40
F5



DATE: 11/11
PROJECT: C.C.
DRAWN BY: C.C.
PLOR: 08-27-2013

DRAWING DESCRIPTION:
TOPO

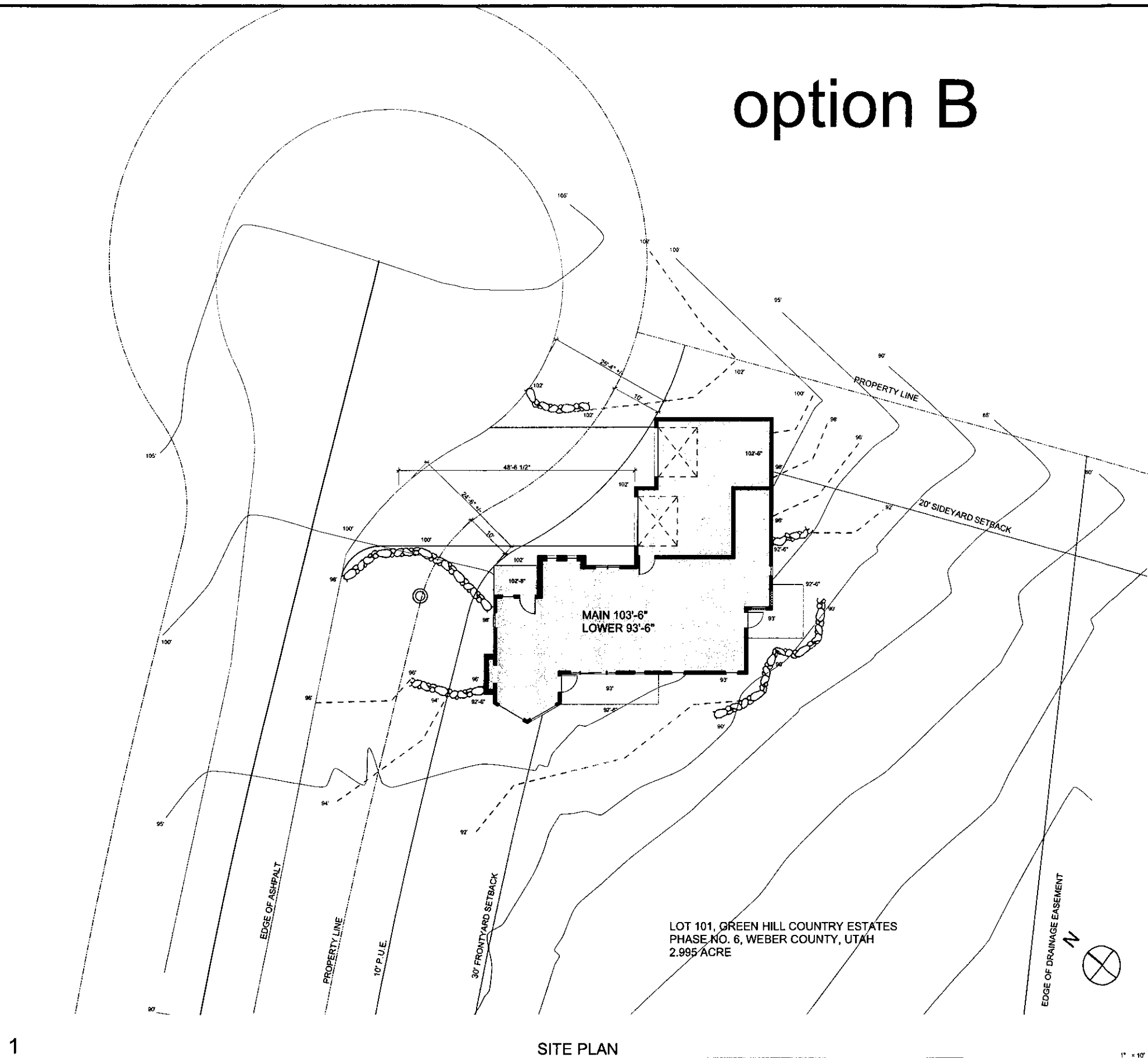
177 E. ANTELOPE DR. #B
LAYTON, UT 84041
PHONE: (801) 499-5054
FAX: (801) 499-5065



LOT 101 GREEN HILL COUNTRY ESTATES
WEBER COUNTY, UTAH

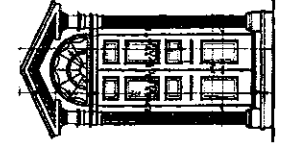
SHIRT NUMBER:
C1

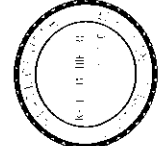
option B



LOT 101, GREEN HILL COUNTRY ESTATES
 PHASE NO. 6, WEBER COUNTY, UTAH
 2.995 ACRE

**Nielson
 Architecture
 Planning, Inc.**
 Kelly Nielson, Architect
 1333 South 2375 West
 Syracuse, Utah 84075
 801-775-0846 o
 801-564-7200 m



Professional Stamp

 Not valid with out
 Original Signature

**NIEDERHAUSER
 Builders, Inc.**
 Clare Niederhauser, G.C.
 2536 East Genille Street
 Layton, Utah 84040
 801-721-9333

A MOUNTAIN HOME FOR THE
F R E H N E R S
 1306 North Maple Drive,
 Huntsville, Utah

PROJECT NO: 1312
 DATE: August 12, 2013
 DRAWN BY: KMN
 CHKD BY:
 COPYRIGHT: Nielson Architecture/Planning, Inc

SHEET TITLE
SITE PLAN

C-1
 SHEET 2 OF