



WEBER COUNTY

PLANNING COMMISSION

Craig C. Barker
Director

Date: August 6, 1997

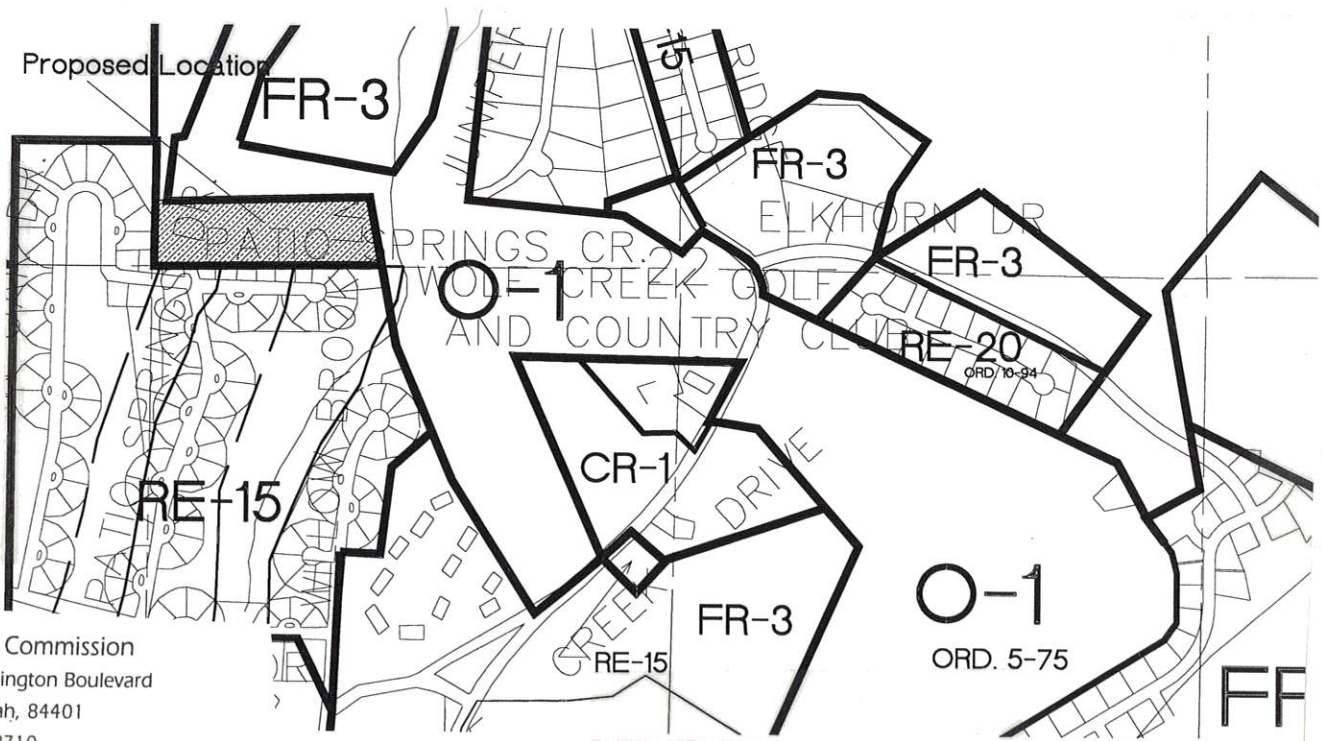
TO PROPERTY OWNERS WITHIN 500 FEET OF THE PROPOSED SUBDIVISION: Fairway Oaks Phase #1 at 4000 N. 4900 E.

The Weber County Planning District will review the Fairway Oaks Subdivision Phase #1 at their next meeting. The subdivision is for 17 Lots at the above location.

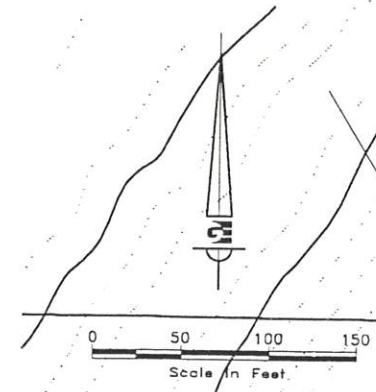
The Weber County Planning District will meet to discuss this subdivision and make a recommendation to the County Commission on Tuesday, Aug 12, 1997 at 6:15 p.m. in the County Commission Chambers, First Floor of the Weber Center, 2380 Washington Blvd., Ogden, Utah. You are invited to attend this meeting to voice your concerns about, support for, or opposition to this subdivision. You may also contact the Planning Commission office between the hours of 8:00 a.m. and 5:00 p.m., Monday through Friday at 399-8710 prior to the meeting.

Sincerely,

Troy Herold, County Planner
Weber County Planning Commission

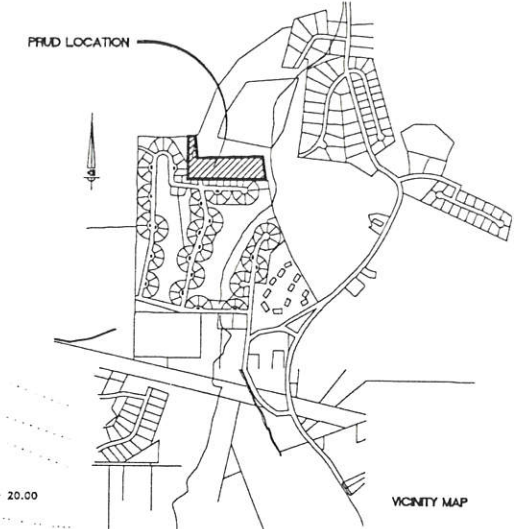
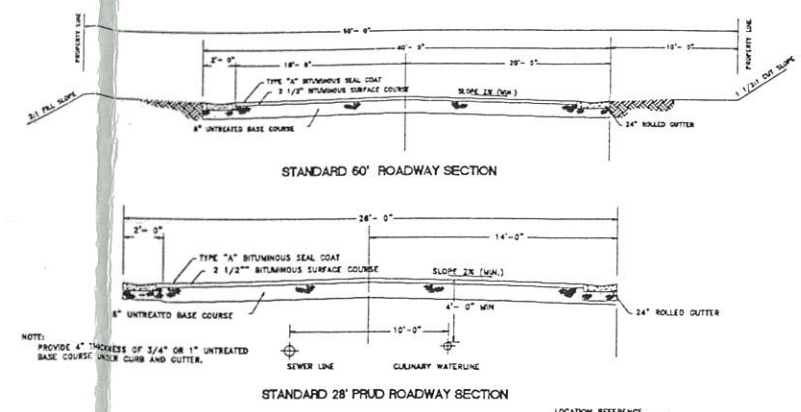


Planning Commission
2510 Washington Boulevard
Ogden, Utah, 84401
(801) 399-8710



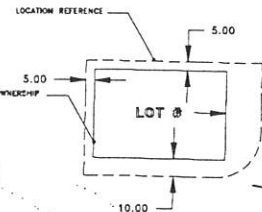
- LANDSCAPE PLAN**
- THUNDERCLOUDS 2-1/2" CALIPER
 - FLOWERING PEAR 2-1/2" CALIPER
 - CRAB SNOWDRIFT 2-1/2" CALIPER
 - CRAB BECHTEL 2-1/2" CALIPER

NOTE: MIXED DWARF VEGETATION AROUND BUILDING PERIMETER EXTENDING 3' OUT BORDERED WITH LANDSCAPE CURBING: BARBERRY, PURPLE FLOWERING SPIREALIA, GOLDEN PRIVET, PINUS MUGO PUMILIO, OREGON GRAPE, (RETAIN NATIVE VEGETATION WHERE POSSIBLE)

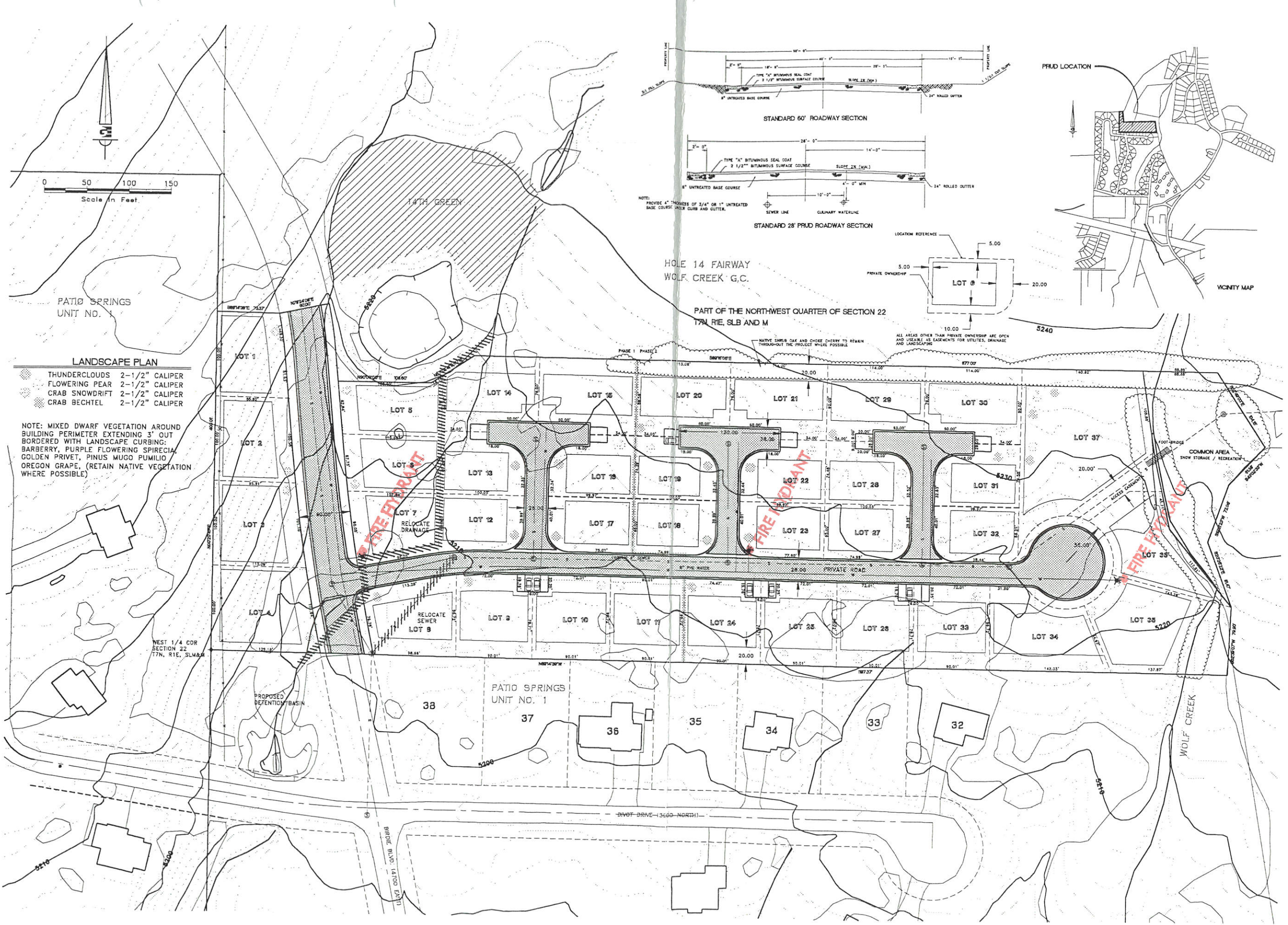


HOLE 14 FAIRWAY
WOLF CREEK G.C.

PART OF THE NORTH-WEST QUARTER OF SECTION 22
17N, 11E, S1/4 AND M



ALL AREAS OTHER THAN PRIVATE OWNERSHIP ARE OPEN AND USABLE AS EASEMENTS FOR UTILITIES, DRAINAGE AND LANDSCAPING



SCALE:	1"=50'
DATE:	MAY 97
DESIGN:	KEG
DRAWN:	KEG
CHECKED:	KEG
DWG:	FAIRWAY

REVISIONS	
DATE	DESCRIPTION

PRELIMINARY PLAT
FAIRWAY OAKS AT WOLF CREEK PRUD
WEBER COUNTY, UTAH
WOLF CREEK ASSOCIATES

5150 Washington Blvd.
 Ogden, Utah 84405
 (801) 476-0022