

# Reviewed

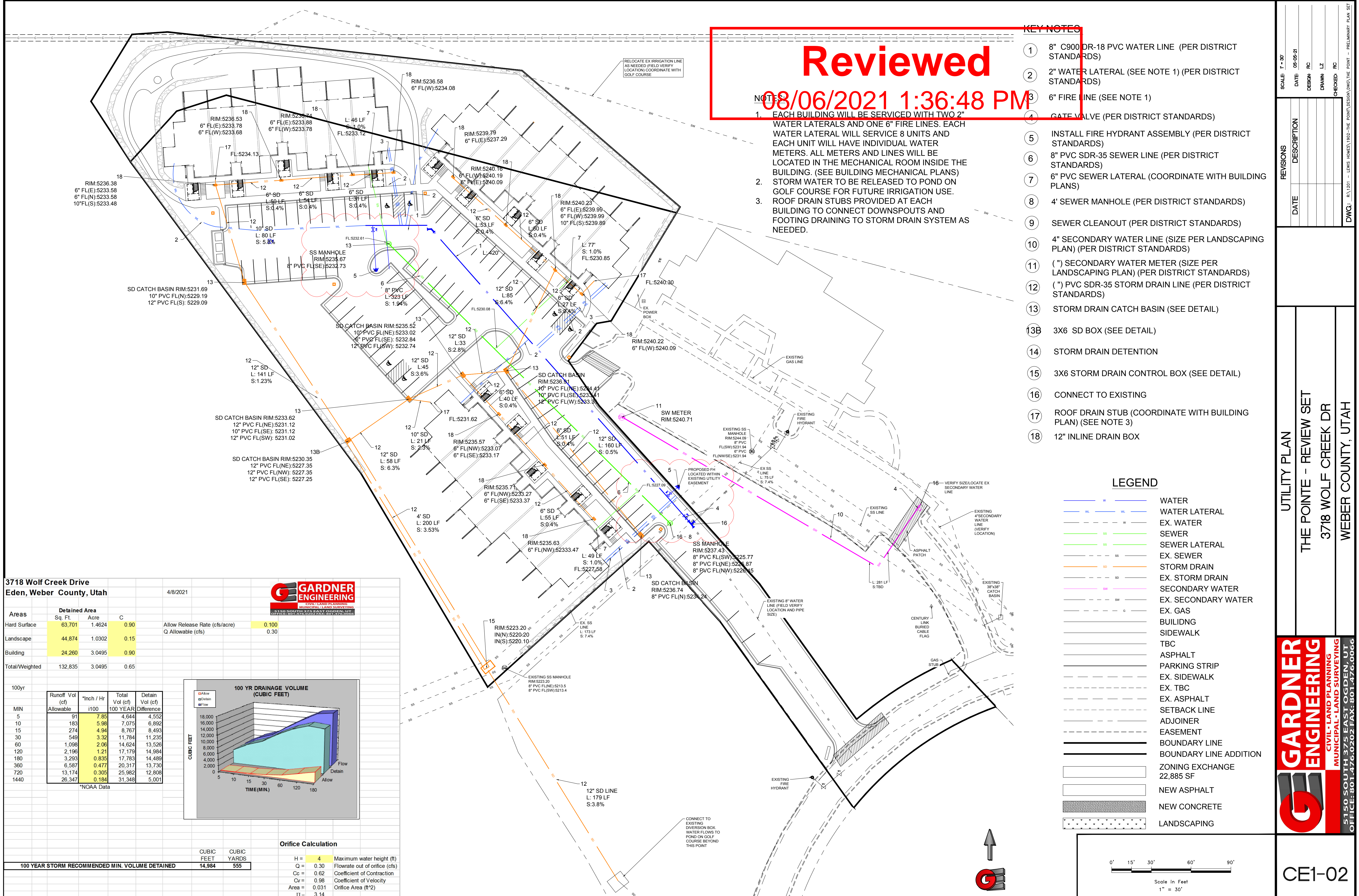
08/06/2021 1:36:48 PM

### KEY NOTES

1. EACH BUILDING WILL BE SERVICED WITH TWO 2" WATER LATERALS AND ONE 6" FIRE LINES. EACH WATER LATERAL WILL SERVICE 8 UNITS AND EACH UNIT WILL HAVE INDIVIDUAL WATER METERS. ALL METERS AND LINES WILL BE LOCATED IN THE MECHANICAL ROOM INSIDE THE BUILDING. (SEE BUILDING MECHANICAL PLANS)
2. STORM WATER TO BE RELEASED TO POND ON GOLF COURSE FOR FUTURE IRRIGATION USE.
3. ROOF DRAIN STUBS PROVIDED AT EACH BUILDING TO CONNECT DOWNSPOUTS AND FOOTING DRAINING TO STORM DRAIN SYSTEM AS NEEDED.
4. GATE VALVE (PER DISTRICT STANDARDS)
5. INSTALL FIRE HYDRANT ASSEMBLY (PER DISTRICT STANDARDS)
6. 8" PVC SDR-35 SEWER LINE (PER DISTRICT STANDARDS)
7. 6" PVC SEWER LATERAL (COORDINATE WITH BUILDING PLANS)
8. 4" SEWER MANHOLE (PER DISTRICT STANDARDS)
9. SEWER CLEANOUT (PER DISTRICT STANDARDS)
10. 4" SECONDARY WATER LINE (SIZE PER LANDSCAPING PLAN) (PER DISTRICT STANDARDS)
11. (") SECONDARY WATER METER (SIZE PER LANDSCAPING PLAN) (PER DISTRICT STANDARDS)
12. (") PVC SDR-35 STORM DRAIN LINE (PER DISTRICT STANDARDS)
13. STORM DRAIN CATCH BASIN (SEE DETAIL)
- 13B. 3X6 SD BOX (SEE DETAIL)
14. STORM DRAIN DETENTION
15. 3X6 STORM DRAIN CONTROL BOX (SEE DETAIL)
16. CONNECT TO EXISTING
17. ROOF DRAIN STUB (COORDINATE WITH BUILDING PLAN) (SEE NOTE 3)
18. 12" INLINE DRAIN BOX

### NOTES

1. RELOCATE EX IRRIGATION LINE AS NEEDED (FIELD VERIFY LOCATION COORDINATE WITH GOLF COURSE)

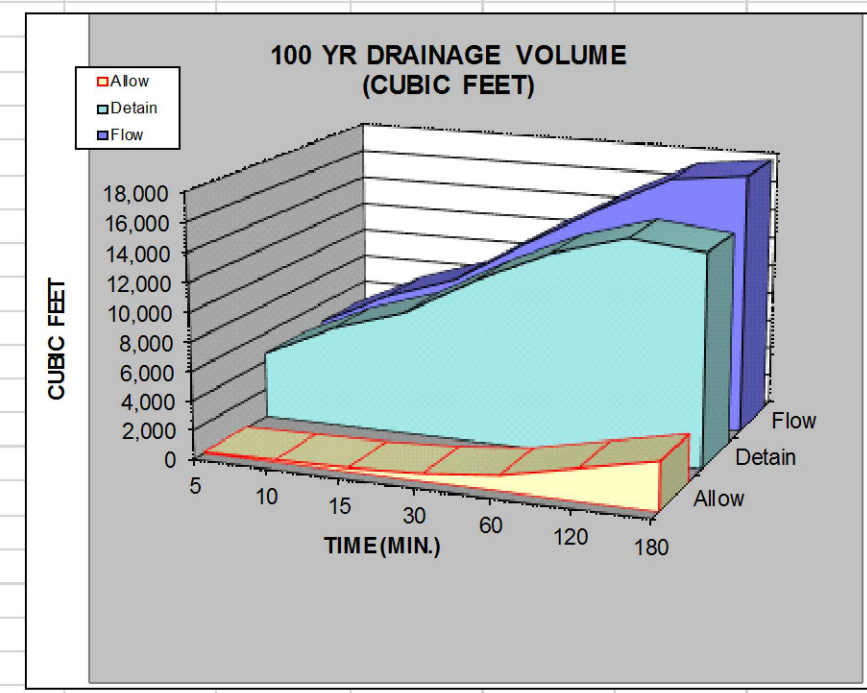


3718 Wolf Creek Drive  
Eden, Weber County, Utah  
4/8/2021



Areas	Detained Area Sq. Ft.	Acre	C	Allow Release Rate (cfs/acre)	Q Allowable (cfs)
Hard Surface	63,701	1.4624	0.90	0.100	0.30
Landscape	44,874	1.0302	0.15		
Building	24,260	3.0495	0.90		
Total/Weighted	132,835	3.0495	0.65		

100yr	Runoff Vol (cf)	Vol (Inch / Hr)	Total Vol (cf)	Detain Vol (cf)
MIN	Allowable	i100	100 YEAR	Difference
5	91	7.85	4,644	4,552
10	183	5.98	7,075	6,892
15	274	4.94	8,767	8,493
30	549	3.32	11,784	11,235
60	1,098	2.06	14,624	13,526
120	2,196	1.21	17,179	14,984
180	3,293	0.835	17,783	14,489
360	6,587	0.477	20,317	13,730
720	13,174	0.305	25,982	12,808
1440	26,347	0.184	31,348	5,001



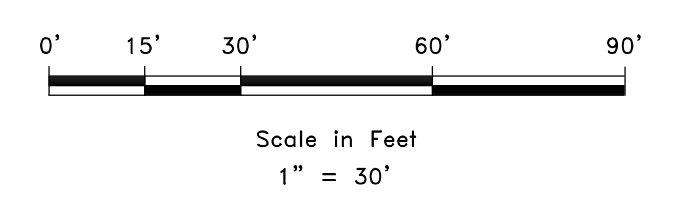
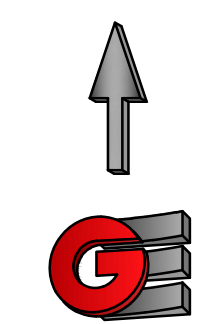
### Orifice Calculation

H = 4 Maximum water height (ft)  
 Q = 0.30 Flowrate out of orifice (cfs)  
 Cc = 0.62 Coefficient of Contraction  
 Cv = 0.98 Coefficient of Velocity  
 Area = 0.031 Orifice Area (ft<sup>2</sup>)  
 II = 3.14  
 g = 32.17 Gravitational Constant  
 d = 3.00 Orifice Diameter (in)

100 YEAR STORM RECOMMENDED MIN. VOLUME DETAINED	CUBIC FEET	CUBIC YARDS
	14,984	555

### LEGEND

- WATER
- WATER LATERAL
- EX. WATER
- SEWER
- SEWER LATERAL
- EX. SEWER
- STORM DRAIN
- EX. STORM DRAIN
- SECONDARY WATER
- EX. SECONDARY WATER
- EX. GAS
- BUILDING
- SIDEWALK
- TBC
- ASPHALT
- PARKING STRIP
- EX. SIDEWALK
- EX. TBC
- EX. ASPHALT
- SETBACK LINE
- ADJOINER
- EASEMENT
- BOUNDARY LINE
- BOUNDARY LINE ADDITION
- ZONING EXCHANGE
- 22,885 SF
- NEW ASPHALT
- NEW CONCRETE
- LANDSCAPING



REVISIONS	DATE	DESCRIPTION

DATE	DESCRIPTION

UTILITY PLAN  
THE POINTE - REVIEW SET

3718 WOLF CREEK DR  
WEBER COUNTY, UTAH

**GARDNER ENGINEERING**  
 CIVIL-LAND PLANNING  
 MUNICIPAL-LAND SURVEYING  
 5150 SOUTH 375 EAST OGDEN, UT  
 OFFICE: 801.476.0202 FAX: 801.476.0066

CE1-02