

NOB HILL ADDITION

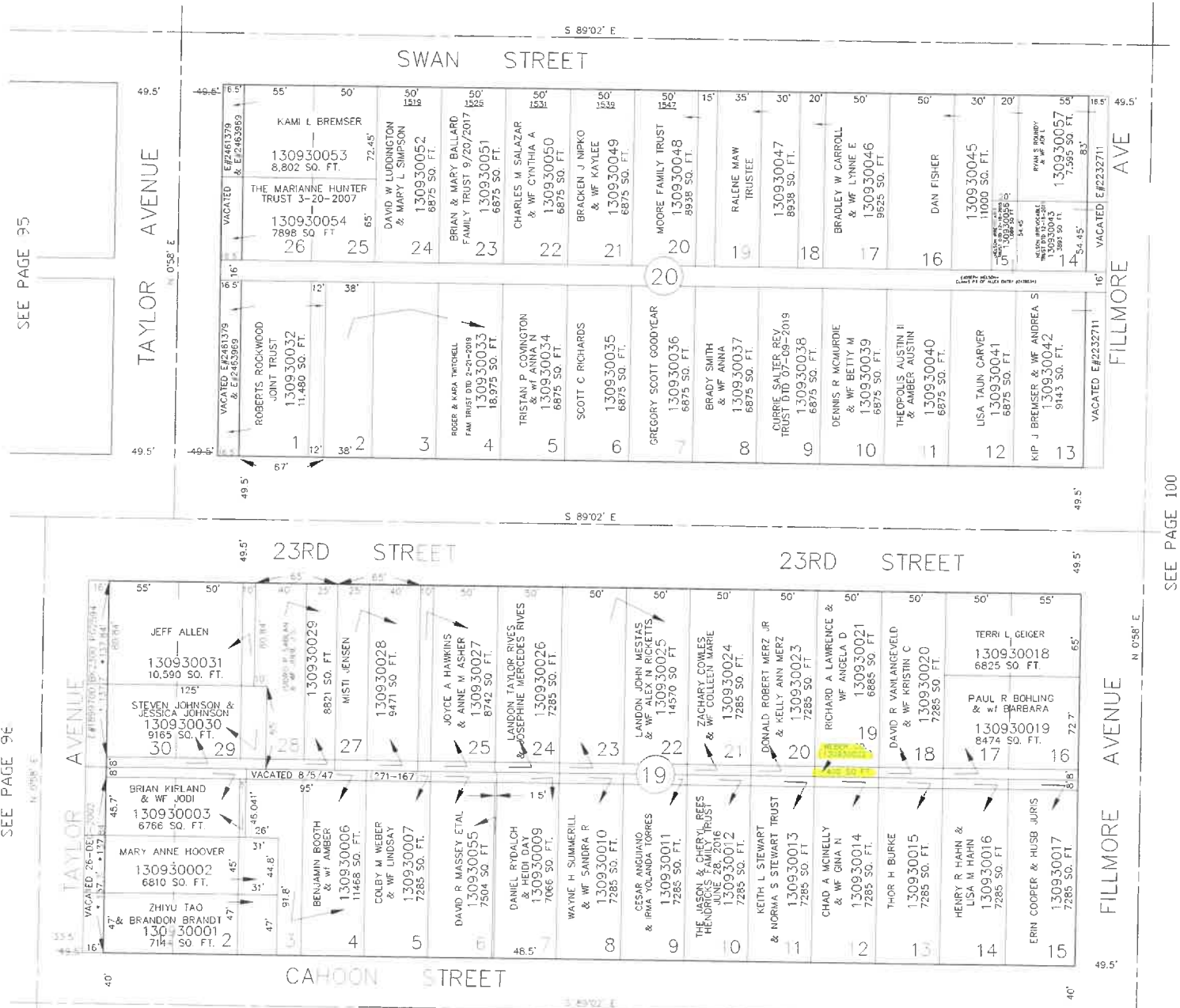
BLOCKS 19 & 20

TAXING UNIT: 25

IN OGDEN CITY

SCALE 1" = 60'

SEE PAGE 94



SEE PAGE 95

SEE PAGE 96

SEE PAGE 100

* OGDEN CITY ENG. DEPT. PLATS
* ORIG. DED. PLAT

FOR COMPLETE ENG. DATA SEE ORIGINAL DEDICATION PLAT IN BOOK 6, PAGE 1 OF RECORDS.