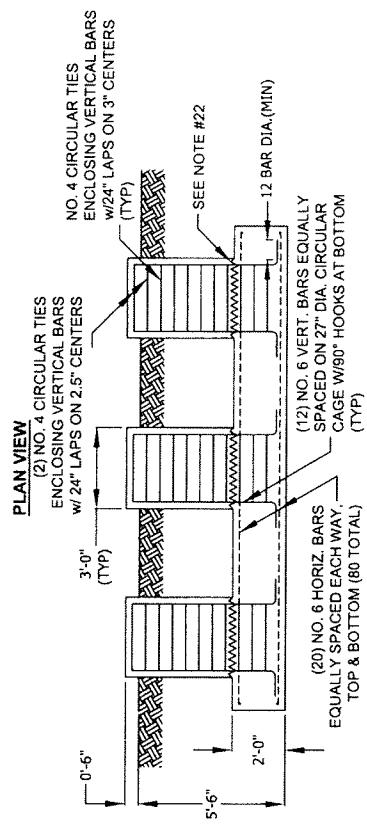
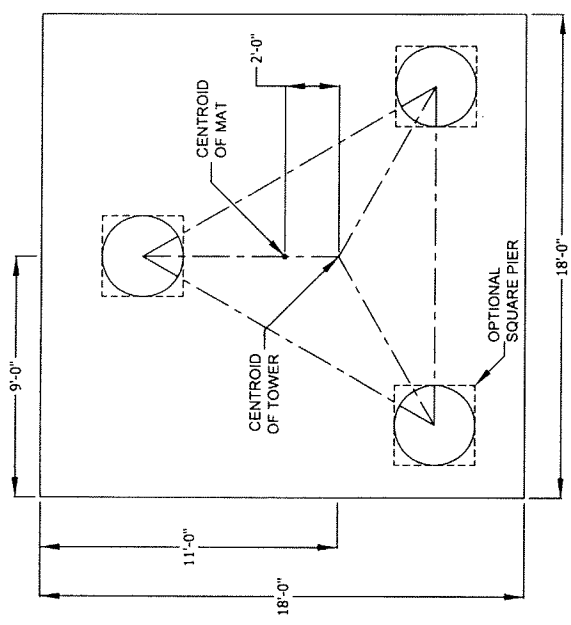


NOTE: SEE DRAWING NO. B090548 FOR STANDARD FOUNDATION NOTES.



CONCRETE VOLUME (cu.yds)

ROUND SQUARE	PIER	PAD	TOTAL
3.1	4.0	24.0	27.1
		28.0	

FACTORED REACTIONS

Maximum O.T.M =	1,063.59 FT-K
Total Tower Wt =	8.59 KIPS
Total Shear =	15.77 KIPS
Max. Shear/Leg =	9.03 KIPS
Max. Ten./Leg =	90.78 KIPS
Max. Comp./Leg =	101.01 KIPS

FILE NO. Q3-060-0811100 FND	REVISIONS DWG CHG. APP	NOT FOR CONSTRUCTION			
REV. DESCRIPTION	DWG CHG. APP		DWG REFERENCE		
678 WEST PLANK ROAD P.O. BOX 11, 91604 TOLL FREE 800-772-ROHN					
THIS DRAWING IS THE PROPERTY OF ROHN PRODUCTS. IT IS TO BE USED ONLY FOR THE PROJECT AND SITE SPECIFICALLY IDENTIFIED HEREON. IT IS NOT TO BE REPRODUCED OR COPIED IN ANY MANNER WITHOUT THE WRITTEN CONSENT OF ROHN PRODUCTS.					
UTAH TRANSIT AUTHORITY Mat w/Raised Piers Foundation Details LITTLE MOUNTAIN					
DWN: AMKW	CHK'D:	DATE:	8/26/2013		
ENGR:	ANKW				
DRAWING NO.					0