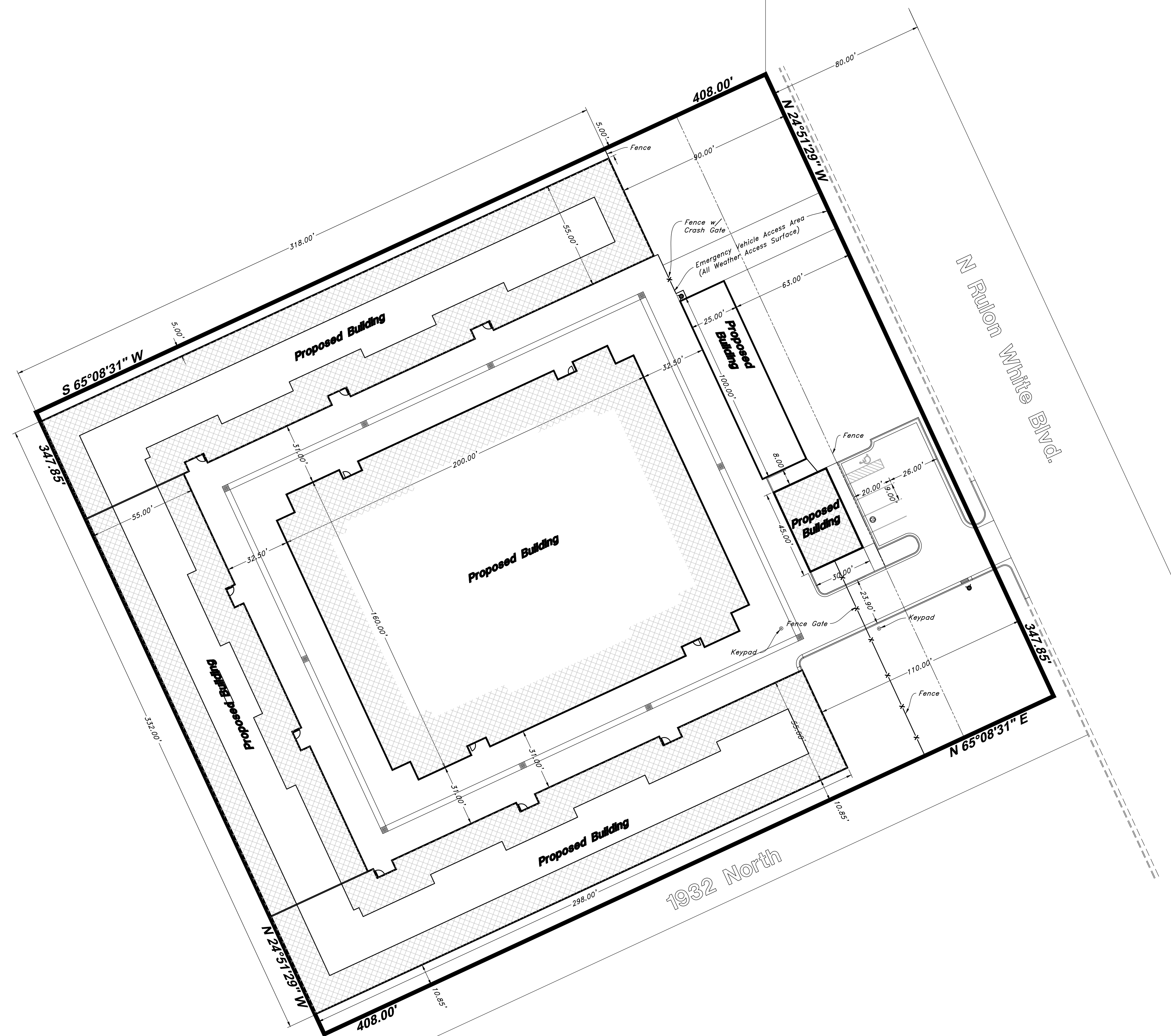


Legend

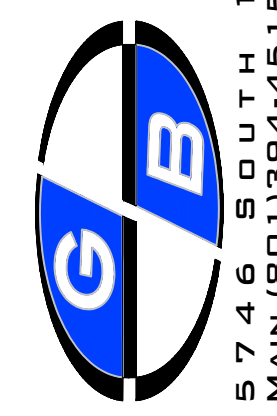
(Note: All items may not appear on drawing)

- Keypad
- San. Sewer Manhole
- Water Manhole
- Storm Drain Manhole
- Electrical Manhole
- Catch Basins
- Exist. Fire Hydrant
- Fire Hydrant
- Exist. Water Valve
- Water Valve
- Sanitary Sewer
- Culinary Water
- Gas Line
- Irrigation Line
- Storm Drain
- Telephone Line
- Secondary Waterline
- Power Line
- Fire Line
- Land Drain
- Power pole
- Power pole w/guy
- Light Pole
- Fence
- Flowline of ditch
- Overhead Power line
- Corrugated Metal Pipe
- Concrete Pipe
- Reinforced Concrete Pipe
- Ductile Iron
- Polyvinyl Chloride
- PVC
- TA
- EA
- CL
- FL
- FF
- TC
- TWL
- TW
- TCM
- NG
- FS
- FDC
- Fire Department Connection
- 90
- 95.337A
- 95.721A
- R
- Direction of Flow
- Unused Space
- Existing Asphalt
- New Asphalt
- Heavy Duty Asphalt
- Concrete
- Spill
- Curb & Gutter
- Demo Tree



SITE DATA
 Parcel Area 141,922 sq.ft. or 3.258 Acres
 Impervious Surface Area 113,487 sq.ft. or 2.605 Acres
 Building Area 77,089 sq.ft. or 1.769 Acres
 Pervious Surface Area 28,435 sq.ft. (20%)
 Up to 50% of Pervious Surface will be irrigated the remaining area will be xeriscaped with rock and/or 0 Water Plantings

Parking
 4 Standard Stalls
 1 ADA Stall
 5 Total Stalls

 <p>GREAT BASIN ENGINEERING</p> <p>5746 SOUTH 1475 EAST OGDEN, UTAH 84403 MAIN (801)394-4515 S.L.L.C. (801)521-0222 FAX (801)392-7544 WWW.GREATBASINENGINEERING.COM</p>	<p>Site Plan</p> <p>Weber Storage Sheds</p> <p>1957 N. Rulon White Blvd. Ogden City, Weber County, Utah A part of Section ??, T??, R??, SLB&M, U.S. Survey</p>
<p>Apr 1, 2021</p> <p>SHEET NO.</p> <p>C1</p> <p>21N713</p>	<p>DESCRIPTION</p> <p>DATE</p> <p>REV</p>