

FILE NO

REV. DESCRIPTION

DATE

BY

CHK

APP

BILL OF MATERIAL

ITEM	QTY	PART NO.	DESCRIPTION
1	1	SEE CHART	GROUND LUG
2	2	GR6250	ROD GROUND 5/8" X 10" HDG
3	1	ADR25-21	LUG, GALVAN 6 - 250 ALCU
4	2	340016T	CLAMP #8034 WB 3/4 TINNED
5	1	220830	SCREW CAP .25-20X1.00" S.S.
6	1	220831	NUT .25-20 HEX S.S.
7	2	250081	WASHER .25 STD FLAT SS
8	2	150400-30	7/16 6x25 EIP TMRC RRL 30'

NOTE: B.O.M. SHOWN IS FOR ONE LEG ONLY.

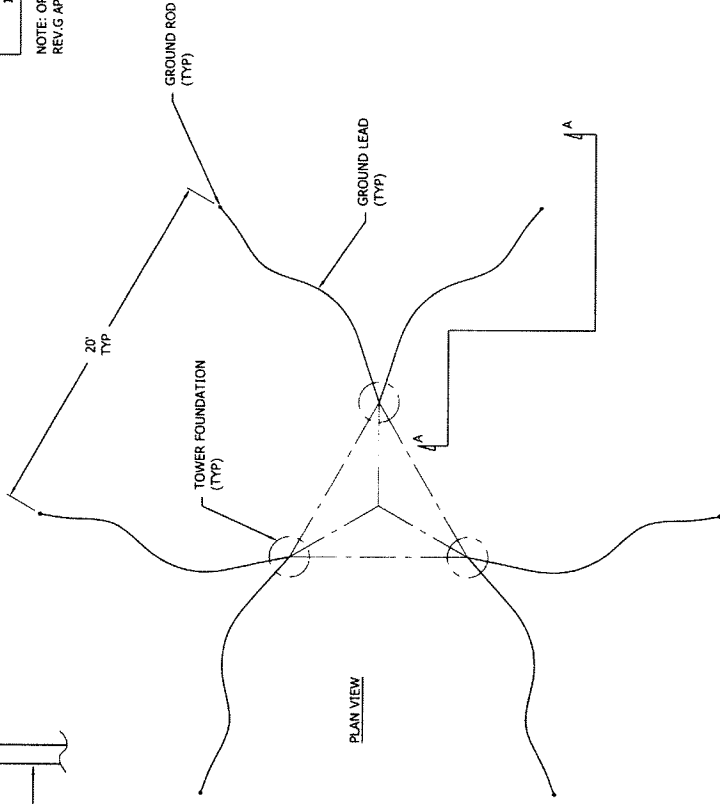
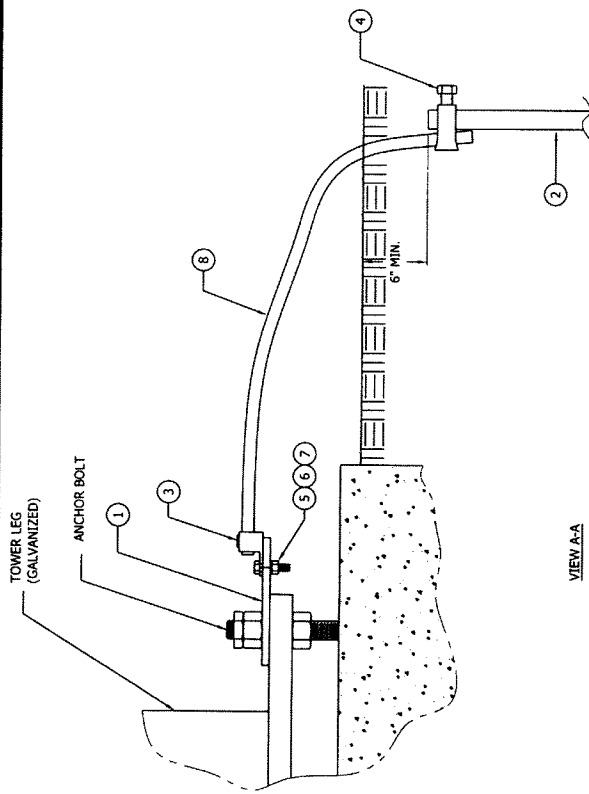
ORDER INFO

ANCHOR ROD SIZE	ASSY. P/N
1/2"	BGK4GGX
5/8"	BGK5GGX
3/4"	BGK6GGX
7/8"	BGK7GGX
1"	BGK8GGX

NOTE: ORDER (3) FOR TYPICAL REV.G APPLICATIONS.

ANCHOR BOLT

ANCHOR BOLT SIZE	GROUND PLATE
1/2"	GL4
5/8"	GL5
3/4"	GL6
7/8"	GL7
1"	GL8



PO BOX 1999
 PEORIA, IL 61601-5999
 TOLL FREE 800 737 ROHN

ALL RIGHTS RESERVED. NO PART OF THIS PUBLICATION MAY BE REPRODUCED OR TRANSMITTED IN ANY FORM OR BY ANY MEANS WITHOUT OUR WRITTEN CONSENT.

TIA-222-G STANDARD FOR SS TOWERS
 (GALV)

DWN: JK
 CHKD: JDM
 DATE: DEC/27/2007

ENGR: DWG
 SHEET # 1 OF 1

DRAWING NO: B070997
 REV: 3