

# SUMMIT AT POWDER MOUNTAIN PHASE 1B

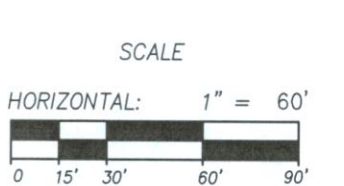
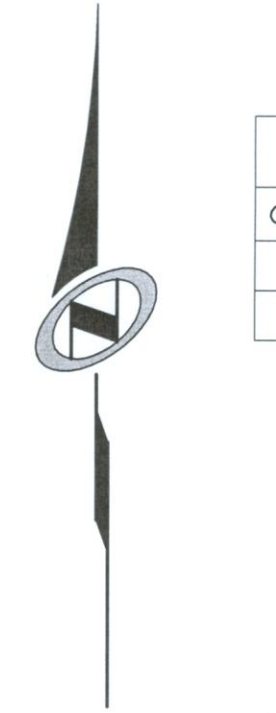
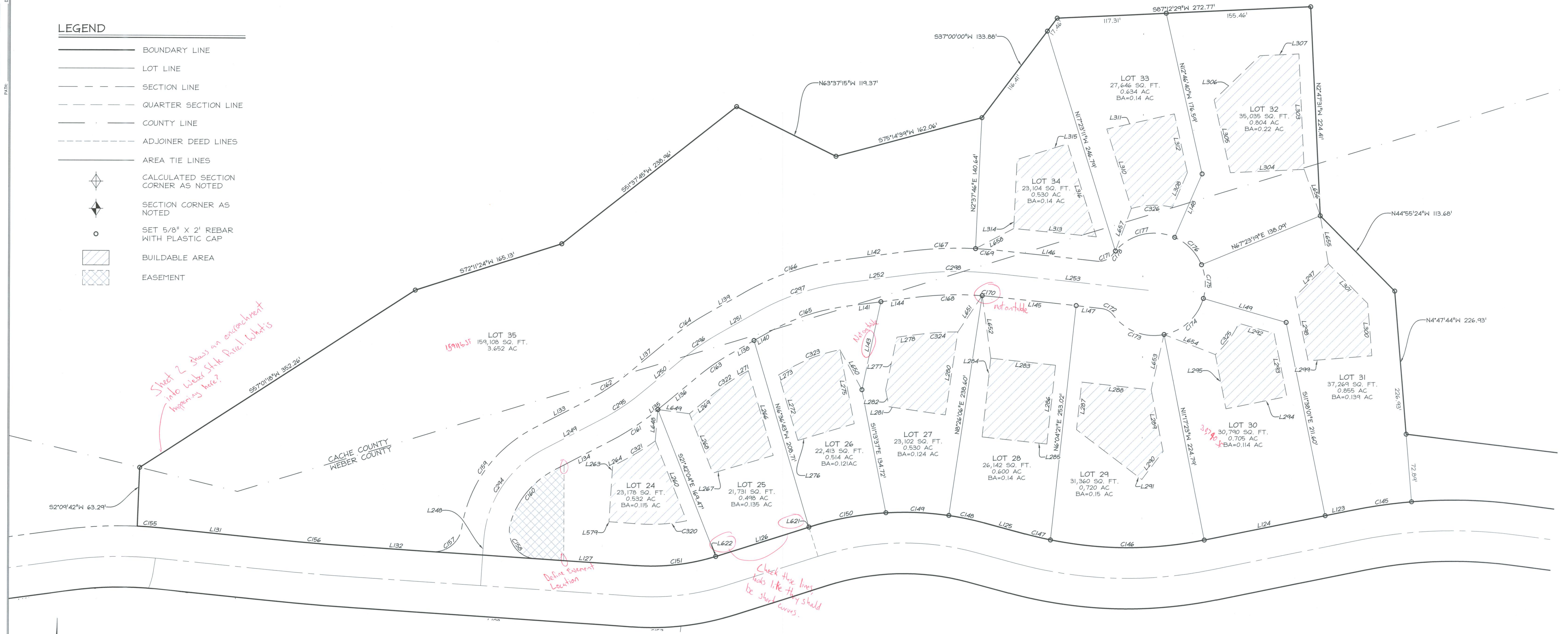
LOCATED IN THE SOUTH HALF OF SECTIONS 5 & 6, AND THE NORTH HALF OF SECTION 8, T 7N, R 2E, 51B1M, WEBER COUNTY, UTAH

DATE: \_\_\_\_\_ TIME: \_\_\_\_\_  
 SERVICE: \_\_\_\_\_ DRAWING NAME: \_\_\_\_\_  
 DESIGNED: \_\_\_\_\_ PLOTTING VIEW: \_\_\_\_\_  
 PROJ. MARK: \_\_\_\_\_

## LEGEND

- BOUNDARY LINE
- LOT LINE
- SECTION LINE
- QUARTER SECTION LINE
- COUNTY LINE
- ADJOINER DEED LINES
- AREA TIE LINES
- CALCULATED SECTION CORNER AS NOTED
- SECTION CORNER AS NOTED
- SET 5/8" X 2' REBAR WITH PLASTIC CAP
- BUILDABLE AREA
- EASEMENT

*Sheet 2 shows an encroachment into Weber State Park. What is happening here?*



CURVE	LENGTH	RADIUS	LONG CHORD	LENGTH
C325	42.24'	100.00'	N 36°36'31" E	41.93'
C326	44.62'	85.00'	S 88°06'21" W	44.11'

CURVE	LENGTH	RADIUS	LONG CHORD	LENGTH
C145	63.61'	533.00'	S 81°47'07" W	63.57'
C146	166.44'	417.00'	N 89°48'02" E	165.33'
C147	27.76'	417.00'	S 76°51'29" E	27.75'
C148	38.44'	333.00'	N 78°15'29" W	38.42'
C149	67.91'	333.00'	N 87°24'27" W	67.80'
C150	84.30'	333.00'	S 79°29'51" W	84.08'
C151	87.66'	234.82'	N 82°56'30" E	87.17'
C155	27.02'	459.15'	S 39°37'07" W	27.01'
C156	98.91'	2990.76'	S 85°24'51" E	98.90'
C157	44.59'	30.00'	N 51°03'40" E	40.60'
C158	54.01'	30.00'	S 34°47'21" E	47.00'
C159	136.58'	145.00'	S 35°28'08" W	131.59'
C160	75.72'	95.00'	S 39°37'07" W	73.74'
C161	59.02'	275.00'	N 56°18'22" E	58.90'
C162	48.24'	225.00'	N 56°18'22" E	48.19'
C163	39.27'	225.00'	S 55°09'31" W	39.22'
C164	48.00'	275.00'	S 55°09'31" W	47.94'
C165	88.71'	225.00'	S 71°27'14" W	88.14'
C166	108.42'	275.00'	S 71°27'14" W	107.72'
C167	73.29'	425.00'	S 87°41'21" W	73.20'

CURVE	LENGTH	RADIUS	LONG CHORD	LENGTH
C168	74.35'	375.00'	S 88°25'44" W	74.23'
C169	25.54'	425.00'	N 85°38'57" E	25.53'
C171	19.01'	18.00'	N 65°48'35" E	18.14'
C172	14.67'	18.00'	N 60°35'11" W	14.26'
C173	61.48'	55.00'	S 69°16'03" E	58.33'
C174	60.31'	55.00'	N 47°17'43" E	57.34'
C175	36.95'	55.00'	N 3°21'56" W	36.26'
C176	42.31'	55.00'	N 44°39'02" W	41.28'
C177	70.00'	55.00'	S 76°50'57" W	65.37'
C178	4.65'	55.00'	S 37°58'04" W	4.65'
C294	123.18'	120.00'	S 33°02'46" W	117.85'
C295	53.65'	250.00'	N 56°18'22" E	53.55'
C296	43.64'	250.00'	S 89°24'38" W	43.58'
C297	98.57'	250.00'	S 71°27'14" W	97.93'
C298	93.02'	400.00'	S 89°24'38" W	92.81'
C320	51.59'	189.82'	S 85°19'07" W	51.43'
C321	43.32'	300.00'	N 58°19'02" E	43.28'
C322	34.91'	200.00'	N 55°09'31" E	34.87'
C323	57.90'	180.00'	N 69°22'26" E	57.65'
C324	43.26'	335.00'	N 86°26'53" E	43.23'

LINE	LENGTH	DIRECTION
L123	30.58'	N 78°21'59" E
L124	132.59'	N 78°21'59" E
L125	46.14'	S 74°57'04" E
L127	108.41'	S 86°21'42" E
L131	114.11'	S 84°28'01" E
L132	78.15'	S 86°21'42" E
L133	67.41'	N 62°27'14" E
L134	67.41'	S 62°27'14" W
L136	57.55'	S 50°09'33" W
L137	60.24'	N 50°09'33" E
L138	30.71'	S 60°09'33" W
L139	49.03'	N 60°09'33" E
L140	18.32'	S 60°09'33" W
L141	36.96'	S 82°44'56" W
L142	71.93'	N 82°44'56" E
L144	34.97'	S 82°44'56" W
L145	88.66'	N 83°55'39" E
L146	105.98'	S 83°55'39" E
L147	27.76'	N 83°55'39" E
L148	74.13'	N 23°18'36" E

LINE	LENGTH	DIRECTION
L149	92.59'	S 74°07'11" E
L248	15.22'	N 3°38'18" E
L249	67.41'	N 62°27'14" E
L250	60.24'	N 50°09'33" E
L251	49.03'	N 60°09'33" E
L252	71.93'	N 82°44'56" E
L253	164.14'	S 83°55'39" E
L260	91.90'	S 21°42'04" E
L263	59.86'	N 3°38'18" E
L264	9.94'	N 62°27'14" E
L266	94.83'	S 16°36'43" E
L267	67.61'	S 73°23'17" W
L268	68.55'	N 21°42'04" W
L269	34.17'	N 50°09'33" E
L271	9.43'	N 60°09'33" E
L273	13.49'	N 60°09'33" E
L275	80.87'	S 11°33'37" E
L276	63.05'	S 73°23'17" W
L277	57.70'	N 12°00'14" E
L278	22.46'	N 82°44'56" E

LINE	LENGTH	DIRECTION
L280	90.02'	S 8°26'06" W
L281	61.29'	N 81°33'54" W
L282	18.46'	N 11°13'37" W
L283	70.00'	N 83°55'39" W
L284	85.00'	S 6°04'21" W
L285	70.00'	S 83°55'39" E
L286	85.00'	N 6°04'21" E
L287	51.44'	N 6°04'21" E
L288	74.99'	S 83°55'39" E
L289	67.32'	S 11°17'23" W
L290	37.86'	S 36°59'11" W
L291	88.15'	N 53°00'49" E
L292	39.62'	S 74°07'11" E
L293	68.96'	S 11°38'01" E
L295	59.34'	N 11°17'23" W
L297	50.15'	S 45°04'36" W
L298	70.44'	S 11°38'01" E
L299	68.76'	N 85°12'16" E
L300	56.22'	N 4°47'44" W
L301	60.21'	N 44°55'24" W

LINE	LENGTH	DIRECTION
L303	123.92'	S 2°47'31" E
L304	79.38'	S 87°12'29" W
L305	80.00'	N 12°46'40" W
L306	68.29'	N 45°50'30" E
L307	42.00'	N 87°12'29" E
L308	40.58'	S 23°18'36" W
L310	89.23'	N 17°23'11" W
L311	74.39'	N 77°13'20" E
L312	64.48'	S 12°46'40" E
L313	89.20'	N 84°30'27" W
L314	74.22'	N 23°7'46" E
L315	56.78'	N 72°36'49" E
L316	104.41'	S 17°23'11" W
L579	32.19'	N 86°21'42" W
L618	15.56'	N 9°04'09" E
L621	0.06'	S 72°15'00" W
L622	1.04'	S 72°22'20" W
L653	60.89'	S 12°57'09" W
L654	59.15'	S 68°59'41" E
L655	52.03'	S 9°42'51" E

LINE	LENGTH	DIRECTION
L656	52.67'	N 19°20'13" W
L657	48.78'	N 20°33'43" E
L658	46.35'	N 62°17'39" E

## SUMMIT AT POWDER MOUNTAIN PHASE 1B LOTS 15 TO 35

LOCATED IN SECTIONS 5, 6 AND 8 OF  
 TOWNSHIP 7 NORTH, RANGE 2 EAST, SALT LAKE  
 BASE AND MERIDIAN, WEBER COUNTY, UTAH

Sheet 3 of 3

**NV5**

**NOLTE VERTICALFIVE**

5217 SOUTH STATE STREET, SUITE 300  
 801.743.1300 TEL. 801.743.0390 FAX  
 MURRAY, UT 84107  
 WWW.NOLTE.COM

**RECORDED #**  
 STATE OF UTAH, COUNTY OF WEBER,  
 RECORDED AND FILED AT THE  
 REQUEST OF: \_\_\_\_\_  
 ENTRY NO: \_\_\_\_\_  
 DATE: \_\_\_\_\_ TIME: \_\_\_\_\_  
 BOOK: \_\_\_\_\_ PAGE: \_\_\_\_\_  
 FEE \$ \_\_\_\_\_  
 WEBER COUNTY RECORDER