

CURVE TABLE

#	RADIUS	ARC LENGTH	CHORD LENGTH	TANGENT	CHORD BEARING	DELTA ANGLE
C1	30.00'	22.08'	21.58'	11.57'	N20°08'06"W	42°10'06"
C2	55.00'	49.23'	47.60'	26.40'	N15°34'45"W	51°16'48"
C3	55.00'	51.76'	49.88'	27.98'	N37°01'25"E	53°55'32"
C4	55.00'	51.76'	49.88'	27.98'	S89°03'03"E	53°55'32"
C5	55.00'	51.76'	49.88'	27.98'	S35°07'31"E	53°55'32"
C6	55.00'	49.23'	47.60'	26.40'	S17°28'39"W	51°16'48"
C7	30.00'	22.08'	21.58'	11.57'	S22°02'W	42°10'06"

BOUNDARY DESCRIPTION

PART OF THE SOUTHWEST QUARTER OF SECTION 17, TOWNSHIP 6 NORTH, RANGE 2 WEST, SALT LAKE BASE AND MERIDIAN, U.S. SURVEY. MORE PARTICULARLY DESCRIBED AS FOLLOWS:

BEGINNING AT A POINT ON THE WESTERLY RIGHT-OF-WAY LINE OF 4700 WEST STREET, SAID POINT BEING N01°06'08"E 267.68 FEET AND N88°53'52"W 40.00 FEET FROM THE SOUTH QUARTER CORNER OF SAID SECTION 17; THENCE N89°03'02"W 1304.03 FEET; THENCE N00°28'19"E 778.31 FEET; THENCE S88°56'48"E 289.63 FEET; THENCE N01°09'05"E 242.66 FEET; THENCE S89°09'36"E 688.92 FEET; THENCE S01°49'43"W 506.66 FEET; THENCE S88°44'54"E 340.26 FEET TO THE WESTERLY RIGHT-OF-WAY LINE OF 4700 WEST STREET; THENCE S01°06'08"W ALONG SAID WESTERLY LINE, 513.34 FEET TO THE POINT OF BEGINNING.

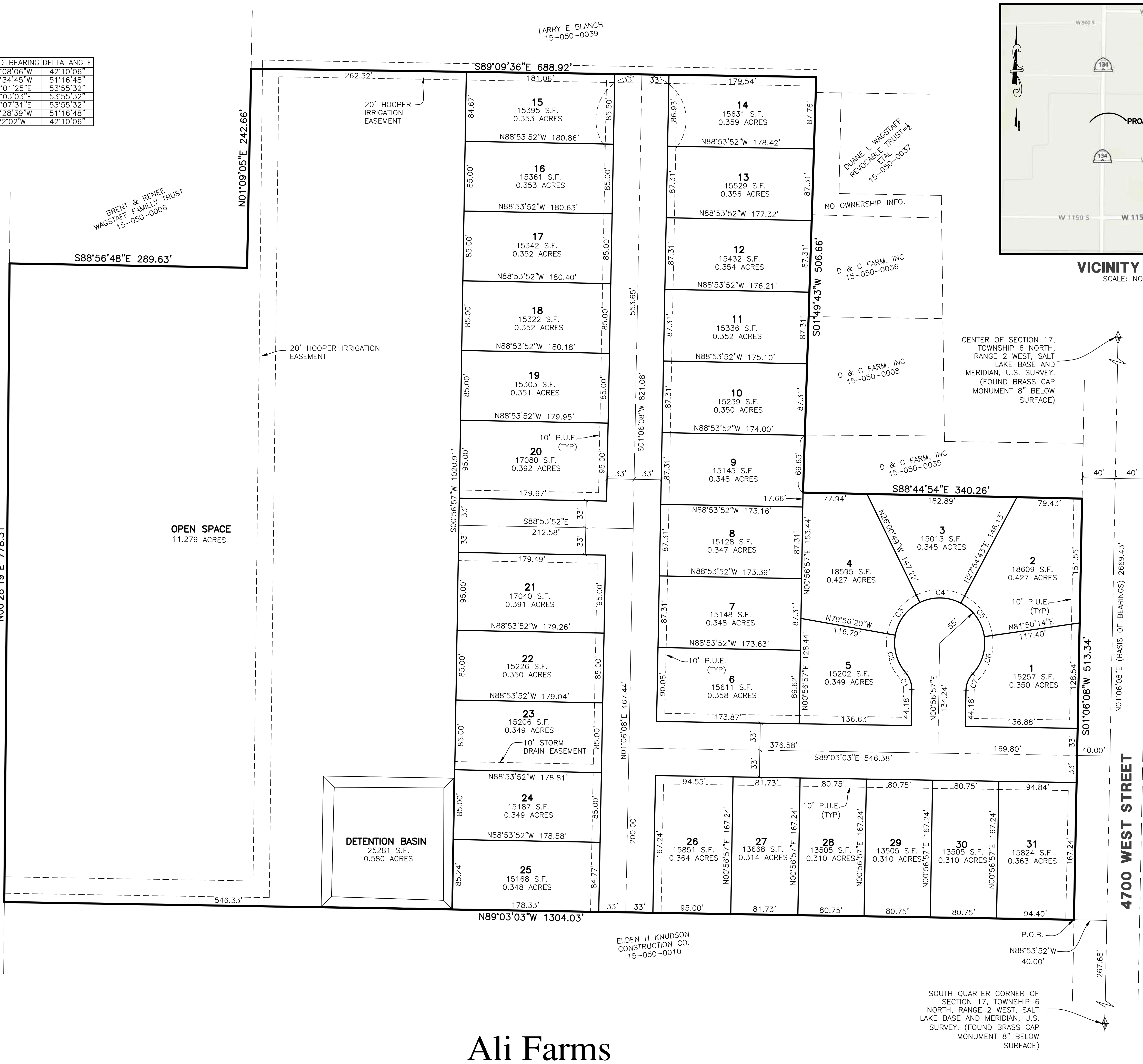
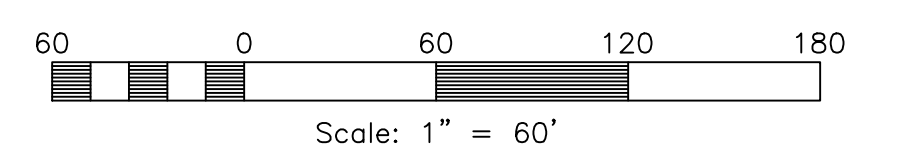
CONTAINING 1,095,666 SQUARE FEET OR 25.153 ACRES MORE OR LESS.

DESIGN DATA

TOTAL AREA.....25.15 ACRES
 RIGHT-OF-WAY AREA.....2.89 ACRES
 NET AREA.....22.26 ACRES
 OPEN SPACE PROPOSED...11.26 ACRES (50.6%)
 DENSITY-25.15 X 1.25 = 31 LOTS

LEGEND

- = SECTION CORNER
- = BOUNDARY LINE
- = LOT LINE
- = ADJOINING PROPERTY
- = EASEMENTS
- = SECTION TIE LINE
- = PUBLIC UTILITY EASEMENT



VICINITY MAP
SCALE: NONE

Ali Farms

Weber County, Utah

Developer:
Phil Holland
(801) 668-1565

Reeve & Associates, Inc.

 5160 S. 1500 WEST RIVERDALE, UTAH 84405
 TEL: (801) 668-1565 FAX: (801) 668-1566 WWW: REEVE-ASSOC.COM
 LAND PLANNERS • CIVIL ENGINEERS • LAND SURVEYORS
 TRAFFIC ENGINEERS • STRUCTURAL ENGINEERS • LANDSCAPE ARCHITECTS

REVISIONS	DESCRIPTION	DATE

Ali Farms
 PART OF THE SW 1/4 OF SECTION 17, T.6N., R.2W., S.11B & M., U.S. SURVEY
 WEBER COUNTY, UTAH
Preliminary Plan

Project Info.
 Engineer: N. Reeve
 Planner: C. Cove
 Designer: E. Roche
 Date: 7-13-21
 Name: ALI FARMS
 Number: 7605-02

