

LEGAL DESCRIPTIONS

(AREA 1)

BEGINNING AT A POINT THAT IS SOUTH 01°09'02" WEST 2,468.42 FEET AND EAST 2,031.16 FROM THE WEST QUARTER CORNER OF SECTION 5, TOWNSHIP 7 NORTH, RANGE 1 EAST, SALT LAKE BASE AND MERIDIAN; RUNNING THENCE SOUTH 22°00'21" WEST 196.22 FEET; THENCE SOUTH 34°42'50" WEST 437.67 FEET; THENCE WEST 2,083.16 FEET; THENCE SOUTH 1,436.09 FEET; THENCE SOUTH 66°02'10" WEST 565.64 FEET; THENCE SOUTH 83°57'59" WEST 1,323.75 FEET; THENCE SOUTH 86°23'26" WEST 870.31 FEET; THENCE SOUTH 68°56'15" WEST 919.23 FEET; THENCE NORTH 01°29'36" EAST 623.17 FEET; THENCE NORTH 68°02'54" WEST 644.85 FEET; THENCE SOUTH 41°58'40" WEST 296.34 FEET; THENCE NORTH 88°30'24" WEST 233.06 FEET; THENCE SOUTH 55°49'44" WEST 849.17 FEET TO THE SOUTHERLY LINE OF SECTION 12, TOWNSHIP 7 NORTH, RANGE 1 EAST, SALT LAKE BASE AND MERIDIAN; THENCE NORTH 89°40'51" WEST ALONG THE CENTER SECTION LINE OF SECTION 12, 616.65 FEET; THENCE NORTH 00°12'06" WEST 693.84 FEET; THENCE NORTH 42°32'52" EAST 649.90 FEET; THENCE NORTH 47°31'16" EAST 525.96 FEET; THENCE NORTH 36°36'36" EAST 300.42 FEET; THENCE NORTH 10°09'08" EAST 352.63 FEET; THENCE NORTH 23°11'03" EAST 614.71 FEET TO THE NORTHEAST CORNER OF SAID SECTION 12; THENCE NORTH 26°21'06" EAST 669.33 FEET; THENCE NORTH 40°27'50" EAST 792.62 FEET; THENCE SOUTH 71°00'44" EAST 524.76 FEET; THENCE SOUTH 65°29'59" EAST 363.54 FEET; THENCE SOUTH 81°24'28" EAST 567.61 FEET TO THE SOUTHERLY LINE OF SUMMIT PASS; THENCE ALONG SAID SOUTHERLY LINE OF SUMMIT PASS THE FOLLOWING FORTY-THREE (43) COURSES: 1) SOUTHEASTERLY ALONG A 213.00 FOOT RADIUS NON-TANGENT CURVE TO THE LEFT, (CHORD BEARS SOUTH 26°23'17" EAST A DISTANCE OF 232.86 FEET), THROUGH A CENTRAL ANGLE OF 66°16'20", A DISTANCE OF 246.37 FEET, 2) SOUTH 59°31'27" EAST 20.07 FEET, 3) EASTERLY ALONG A 215.83 FOOT RADIUS TANGENT CURVE TO THE LEFT, (CHORD BEARS SOUTH 75°11'37" EAST A DISTANCE OF 116.58 FEET), THROUGH A CENTRAL ANGLE OF 31°20'18", A DISTANCE OF 118.05 FEET, 4) NORTH 89°08'14" EAST 27.32 FEET, 5) EASTERLY ALONG A 483.21 FOOT RADIUS TANGENT CURVE TO THE LEFT, (CHORD BEARS NORTH 82°46'27" EAST A DISTANCE OF 107.11 FEET), THROUGH A CENTRAL ANGLE OF 12°43'35", A DISTANCE OF 107.33 FEET, 6) NORTH 76°24'39" EAST 166.99 FEET, 7) EASTERLY ALONG A 147.00 FOOT RADIUS TANGENT CURVE TO THE RIGHT, (CHORD BEARS SOUTH 80°40'01" EAST A DISTANCE OF 114.51 FEET), THROUGH A CENTRAL ANGLE OF 45°50'39", A DISTANCE OF 117.62 FEET, 8) SOUTH 57°44'42" EAST 14.03 FEET, 9) EASTERLY ALONG A 383.00 FOOT RADIUS TANGENT CURVE TO THE LEFT, (CHORD BEARS SOUTH 78°01'21" EAST A DISTANCE OF 265.47 FEET), THROUGH A CENTRAL ANGLE OF 40°33'19", A DISTANCE OF 271.10 FEET, 10) NORTH 81°42'00" EAST 53.97 FEET, 11) EASTERLY ALONG A 418.71 FOOT RADIUS TANGENT CURVE TO THE RIGHT, (CHORD BEARS NORTH 88°04'31" EAST A DISTANCE OF 92.99 FEET), THROUGH A CENTRAL ANGLE OF 12°45'03", A DISTANCE OF 93.18 FEET, 12) SOUTH 85°32'57" EAST 56.26 FEET, 13) EASTERLY ALONG A 733.00 FOOT RADIUS TANGENT CURVE TO THE LEFT, (CHORD BEARS NORTH 81°41'37" EAST A DISTANCE OF 323.72 FEET), THROUGH A CENTRAL ANGLE OF 25°30'52", A DISTANCE OF 326.41 FEET, 14) NORTH 68°56'11" EAST 94.64 FEET, 15) EASTERLY ALONG A 167.00 FOOT RADIUS TANGENT CURVE TO THE RIGHT, (CHORD BEARS NORTH 85°01'33" EAST A DISTANCE OF 92.56 FEET), THROUGH A CENTRAL ANGLE OF 32°10'44", A DISTANCE OF 93.79 FEET, 16) SOUTH 78°53'05" EAST 41.36 FEET, 17) EASTERLY ALONG A 263.00 FOOT RADIUS TANGENT CURVE TO THE LEFT, (CHORD BEARS NORTH 86°13'07" EAST A DISTANCE OF 145.50 FEET), THROUGH A CENTRAL ANGLE OF 29°47'36", A DISTANCE OF 147.16 FEET, 18) NORTH 71°19'19" EAST 174.07 FEET, 19) EASTERLY ALONG A 967.00 FOOT RADIUS TANGENT CURVE TO THE RIGHT, (CHORD BEARS NORTH 76°42'19" EAST A DISTANCE OF 181.44 FEET), THROUGH A CENTRAL ANGLE OF 10°45'58", A DISTANCE OF 181.70 FEET, 20) NORTH 82°05'18" EAST 101.93 FEET, 21) EASTERLY ALONG A 393.15 FOOT RADIUS TANGENT CURVE TO THE RIGHT, (CHORD BEARS NORTH 88°48'39" EAST A DISTANCE OF 92.04 FEET), THROUGH A CENTRAL ANGLE OF 13°26'42", A DISTANCE OF 92.26 FEET, 22) SOUTH 84°28'01" EAST 114.11 FEET, 23) EASTERLY ALONG A 3,056.76 FOOT RADIUS TANGENT CURVE TO THE LEFT, (CHORD BEARS SOUTH 85°24'51" EAST A DISTANCE OF 101.09 FEET), THROUGH A CENTRAL ANGLE OF 01°53'41", A DISTANCE OF 101.09 FEET, 24) SOUTH 86°21'62" EAST 297.63 FEET, 25) EASTERLY ALONG A 300.82 FOOT RADIUS TANGENT CURVE TO THE LEFT, (CHORD BEARS NORTH 82°56'30" EAST A DISTANCE OF 111.67 FEET), THROUGH A CENTRAL ANGLE OF 21°23'37", A DISTANCE OF 112.32 FEET, 26) NORTH 72°14'41" EAST 103.92 FEET, 27) EASTERLY ALONG A 267.00 FOOT RADIUS TANGENT CURVE TO THE RIGHT, (CHORD BEARS NORTH 88°38'49" EAST A DISTANCE OF 150.79 FEET), THROUGH A CENTRAL ANGLE OF 32°48'14", A DISTANCE OF 152.87 FEET, 28) SOUTH 74°57'04" EAST 46.14 FEET, 29) EASTERLY ALONG A 483.00 FOOT RADIUS TANGENT CURVE TO THE LEFT, (CHORD BEARS SOUTH 88°17'33" EAST A DISTANCE OF 222.90 FEET), THROUGH A CENTRAL ANGLE OF 26°40'57", A DISTANCE OF 224.93 FEET, 30) NORTH 78°21'59" EAST 163.17 FEET, 31) EASTERLY ALONG A 467.00 FOOT RADIUS TANGENT CURVE TO THE RIGHT, (CHORD BEARS NORTH 87°57'27" EAST A DISTANCE OF 155.62 FEET), THROUGH A CENTRAL ANGLE OF 01°05'57", A DISTANCE OF 156.35 FEET, 32) SOUTH 82°27'04" EAST 241.01 FEET, 33) EASTERLY ALONG A 467.00 FOOT RADIUS TANGENT CURVE TO THE RIGHT, (CHORD BEARS SOUTH 76°12'08" EAST A DISTANCE OF 101.66 FEET), THROUGH A CENTRAL ANGLE OF 12°29'53", A DISTANCE OF 101.87 FEET, 34) SOUTH 69°57'12" EAST 128.40 FEET, 35) EASTERLY ALONG A 333.00 FOOT RADIUS TANGENT CURVE TO THE LEFT, (CHORD BEARS SOUTH 81°03'41" EAST A DISTANCE OF 128.31 FEET), THROUGH A CENTRAL ANGLE OF 22°12'58", A DISTANCE OF 129.12 FEET, 36) NORTH 87°49'50" EAST 231.14 FEET, 37) EASTERLY ALONG A 367.00 FOOT RADIUS TANGENT CURVE TO THE RIGHT, (CHORD BEARS SOUTH 70°02'50" EAST A DISTANCE OF 276.41 FEET), THROUGH A CENTRAL ANGLE OF 44°14'39", A DISTANCE OF 283.40 FEET, 38) SOUTH 47°55'31" EAST 81.02 FEET, 39) SOUTHEASTERLY ALONG A 567.00 FOOT RADIUS TANGENT CURVE TO THE RIGHT, (CHORD BEARS SOUTH 36°08'41" EAST A DISTANCE OF 231.52 FEET), THROUGH A CENTRAL ANGLE OF 23°33'40", A DISTANCE OF 233.16 FEET, 40) SOUTH 24°21'51" EAST 113.52 FEET, 41) SOUTHERLY ALONG A 567.00 FOOT RADIUS TANGENT CURVE TO THE RIGHT, (CHORD BEARS SOUTH 15°29'46" EAST A DISTANCE OF 174.82 FEET), THROUGH A CENTRAL ANGLE OF 17°44'11", A DISTANCE OF 175.52 FEET, 42) SOUTH 06°37'40" EAST 118.34 FEET, 43) SOUTHERLY ALONG A 603.42 FOOT RADIUS TANGENT CURVE TO THE LEFT, (CHORD BEARS SOUTH 06°55'18" EAST A DISTANCE OF 6.19 FEET), THROUGH A CENTRAL ANGLE OF 00°35'15", A DISTANCE OF 6.19 FEET; THENCE SOUTH 83°22'20" WEST 385.15 FEET TO THE POINT OF BEGINNING.

CONTAINING 19,477,239 SQUARE FEET OR 447.136 ACRES.

TOGETHER WITH (AREA 2)

BEGINNING AT A POINT THAT IS SOUTH 01°09'02" WEST 995.75 FEET ALONG THE SECTION LINE AND EAST 515.18 FEET FROM THE WEST QUARTER CORNER OF SECTION 5, TOWNSHIP 7 NORTH, RANGE 2 EAST, SALT LAKE BASE AND MERIDIAN, RUNNING THENCE NORTH 87°12'29" EAST 272.77 FEET; THENCE SOUTH 02°47'31" EAST 224.41 FEET; THENCE SOUTH 44°55'24" EAST 113.68 FEET; THENCE SOUTH 04°47'44" EAST 154.04 FEET; THENCE SOUTH 83°04'32" EAST 367.66 FEET; THENCE NORTH 89°26'39" EAST 381.79 FEET; THENCE NORTH 83°08'05" EAST 309.86 FEET; THENCE SOUTH 82°18'33" EAST 415.15 FEET; THENCE SOUTH 49°18'31" EAST 210.20 FEET; THENCE SOUTH 30°26'35" EAST 270.66 FEET; THENCE SOUTH 62°09'42" EAST 391.77 FEET; THENCE SOUTH 62°09'42" EAST 1,191.29 FEET; THENCE SOUTH 240.34 FEET; THENCE EAST 455.19 FEET; THENCE SOUTH 35°01'14" WEST 550.33 FEET; THENCE NORTHWESTERLY ALONG A 455.00 FOOT RADIUS NON-TANGENT CURVE TO THE LEFT, (CHORD BEARS NORTH 64°45'19" WEST A DISTANCE OF 244.33 FEET), THROUGH A CENTRAL ANGLE OF 31°08'57", A DISTANCE OF 247.36 FEET; THENCE SOUTH 09°40'13" WEST 25.00 FEET; THENCE WESTERLY ALONG A 430.00 FOOT RADIUS NON-TANGENT CURVE TO THE LEFT, (CHORD BEARS NORTH 87°04'17" WEST A DISTANCE OF 100.96 FEET), THROUGH A CENTRAL ANGLE OF 13°28'59", A DISTANCE OF 101.19 FEET; THENCE SOUTH 86°11'14" WEST 193.22 FEET; THENCE WESTERLY ALONG A 570.00 FOOT RADIUS TANGENT CURVE TO THE RIGHT, (CHORD BEARS NORTH 88°46'32" WEST A DISTANCE OF 100.10 FEET), THROUGH A CENTRAL ANGLE OF 10°04'29", A DISTANCE OF 100.23 FEET; THENCE SOUTH 06°15'42" WEST 147.00 FEET TO THE NORTHERLY RIGHT OF WAY LINE OF SUMMIT PASS; THENCE ALONG SAID NORTHERLY LINE THE FOLLOWING THIRTY-THREE (33) COURSES: 1) NORTH 83°44'18" WEST 166.47 FEET, 2) NORTHWESTERLY ALONG A 367.00 FOOT RADIUS TANGENT CURVE TO THE RIGHT, (CHORD BEARS NORTH 66°06'41" WEST A DISTANCE OF 222.27 FEET), THROUGH A CENTRAL ANGLE OF 35°15'14", A DISTANCE OF 225.81 FEET, 3) NORTH 48°29'04" WEST 89.38 FEET, 4) NORTHWESTERLY ALONG A 433.00 FOOT RADIUS TANGENT CURVE TO THE LEFT, (CHORD BEARS NORTH 57°28'49" WEST A DISTANCE OF 135.41 FEET), THROUGH A CENTRAL ANGLE OF 17°59'29", A DISTANCE OF 135.97 FEET, 5) NORTH 66°28'34" WEST 225.95 FEET, 6) NORTHWESTERLY ALONG A 367.00 FOOT RADIUS TANGENT CURVE TO THE RIGHT, (CHORD BEARS NORTH 54°25'37" WEST A DISTANCE OF 132.22 FEET), THROUGH A CENTRAL ANGLE OF 24°05'53", A DISTANCE OF 134.36 FEET, 7) NORTH 42°22'41" WEST 79.01 FEET, 8) NORTHWESTERLY ALONG A 367.00 FOOT RADIUS TANGENT CURVE TO THE RIGHT, (CHORD BEARS NORTH 29°31'31" WEST A DISTANCE OF 163.28 FEET), THROUGH A CENTRAL ANGLE OF 25°42'21", A DISTANCE OF 164.68 FEET, 9) NORTH 16°40'20" WEST 261.55 FEET, 10) NORTHERLY ALONG A 537.42 FOOT RADIUS TANGENT CURVE TO THE RIGHT, (CHORD BEARS NORTH 11°39'00" WEST A DISTANCE OF 94.09 FEET), THROUGH A CENTRAL ANGLE OF 10°02'40", A DISTANCE OF 94.21 FEET,

SUMMIT AT POWDER MOUNTAIN PHASE 1

LOCATED IN THE NORTHEAST QUARTER OF SECTION 12, AND SOUTHEAST QUARTER OF SECTION 1, T 7N, R 1E, SLBM, AND THE SOUTH HALF OF SECTION 6, AND SECTION 7, AND THE SOUTH HALF OF SECTION 5, AND THE NORTH HALF OF SECTION 8, T 7N, R 2E, SLBM.

(AREA 2) CONTINUED:

11) NORTH 06°37'40" WEST 118.34 FEET, 12) NORTHERLY ALONG A 633.00 FOOT RADIUS TANGENT CURVE TO THE LEFT, (CHORD BEARS NORTH 15°29'46" WEST A DISTANCE OF 195.17 FEET), THROUGH A CENTRAL ANGLE OF 17°44'11", A DISTANCE OF 195.95 FEET, 13) NORTH 24°21'51" WEST 113.52 FEET, 14) NORTHWESTERLY ALONG A 633.00 FOOT RADIUS TANGENT CURVE TO THE LEFT, (CHORD BEARS NORTH 36°08'41" WEST A DISTANCE OF 258.47 FEET), THROUGH A CENTRAL ANGLE OF 23°33'40", A DISTANCE OF 260.30 FEET, 15) NORTH 47°59'31" WEST 81.02 FEET, 16) WESTERLY ALONG A 433.00 FOOT RADIUS TANGENT CURVE TO THE LEFT, (CHORD BEARS NORTH 70°02'50" WEST A DISTANCE OF 326.12 FEET), THROUGH A CENTRAL ANGLE OF 44°14'39", A DISTANCE OF 334.37 FEET, 17) SOUTH 87°49'50" WEST 231.14 FEET, 18) WESTERLY ALONG A 267.00 FOOT RADIUS TANGENT CURVE TO THE RIGHT, (CHORD BEARS NORTH 81°03'41" WEST A DISTANCE OF 102.88 FEET), THROUGH A CENTRAL ANGLE OF 22°12'58", A DISTANCE OF 103.53 FEET, 19) NORTH 69°57'12" WEST 128.40 FEET, 20) WESTERLY ALONG A 533.00 FOOT RADIUS TANGENT CURVE TO THE LEFT, (CHORD BEARS NORTH 76°12'08" WEST A DISTANCE OF 116.03 FEET), THROUGH A CENTRAL ANGLE OF 12°29'53", A DISTANCE OF 116.26 FEET, 21) NORTH 82°27'04" WEST 241.01 FEET, 22) WESTERLY ALONG A 533.00 FOOT RADIUS TANGENT CURVE TO THE LEFT, (CHORD BEARS SOUTH 87°57'27" WEST A DISTANCE OF 177.61 FEET), THROUGH A CENTRAL ANGLE OF 19°10'57", A DISTANCE OF 178.45 FEET, 23) SOUTH 78°21'59" WEST 163.17 FEET, 24) WESTERLY ALONG A 417.00 FOOT RADIUS TANGENT CURVE TO THE RIGHT, (CHORD BEARS NORTH 88°17'33" WEST A DISTANCE OF 192.44 FEET), THROUGH A CENTRAL ANGLE OF 26°40'57", A DISTANCE OF 194.19 FEET, 25) NORTH 74°57'04" WEST 46.14 FEET, 26) WESTERLY ALONG A 333.00 FOOT RADIUS TANGENT CURVE TO THE LEFT, (CHORD BEARS NORTH 84°06'02" WEST A DISTANCE OF 105.92 FEET), THROUGH A CENTRAL ANGLE OF 17°44'11", A DISTANCE OF 106.35 FEET, 27) WESTERLY ALONG A 333.00 FOOT RADIUS COMPOUND CURVE TO THE LEFT, (CHORD BEARS SOUTH 79°29'51" WEST A DISTANCE OF 84.08 FEET), THROUGH A CENTRAL ANGLE OF 14°30'18", A DISTANCE OF 84.30 FEET, 28) SOUTH 72°14'41" WEST 103.92 FEET, 29) WESTERLY ALONG A 234.82 FOOT RADIUS TANGENT CURVE TO THE RIGHT, (CHORD BEARS SOUTH 82°56'30" WEST A DISTANCE OF 87.17 FEET), THROUGH A CENTRAL ANGLE OF 21°23'37", A DISTANCE OF 87.68 FEET, 30) NORTH 86°21'42" WEST 297.63 FEET, 31) WESTERLY ALONG A 290.76 FOOT RADIUS TANGENT CURVE TO THE RIGHT, (CHORD BEARS NORTH 85°24'51" WEST A DISTANCE OF 98.90 FEET), THROUGH A CENTRAL ANGLE OF 15°53'41", A DISTANCE OF 98.91 FEET, 32) NORTH 84°28'01" WEST 114.11 FEET AND 33) WESTERLY ALONG A 459.15 FOOT RADIUS TANGENT CURVE TO THE LEFT, (CHORD BEARS NORTH 86°09'04" WEST A DISTANCE OF 27.01 FEET), THROUGH A CENTRAL ANGLE OF 03°22'17", A DISTANCE OF 27.02 FEET; THENCE NORTH 02°09'42" EAST 63.29 FEET; THENCE NORTH 57°01'18" EAST 352.26 FEET; THENCE NORTH 72°11'24" EAST 165.13 FEET; THENCE NORTH 51°37'45" EAST 238.96 FEET; THENCE SOUTH 63°37'15" EAST 156.37 FEET; THENCE NORTH 75°14'39" EAST 162.06 FEET; THENCE NORTH 37°00'00" EAST 133.88 FEET TO THE POINT OF BEGINNING.

CONTAINING 2,507,174 SQUARE FEET OR 57.557 ACRES.

TOGETHER WITH (AREA 3)

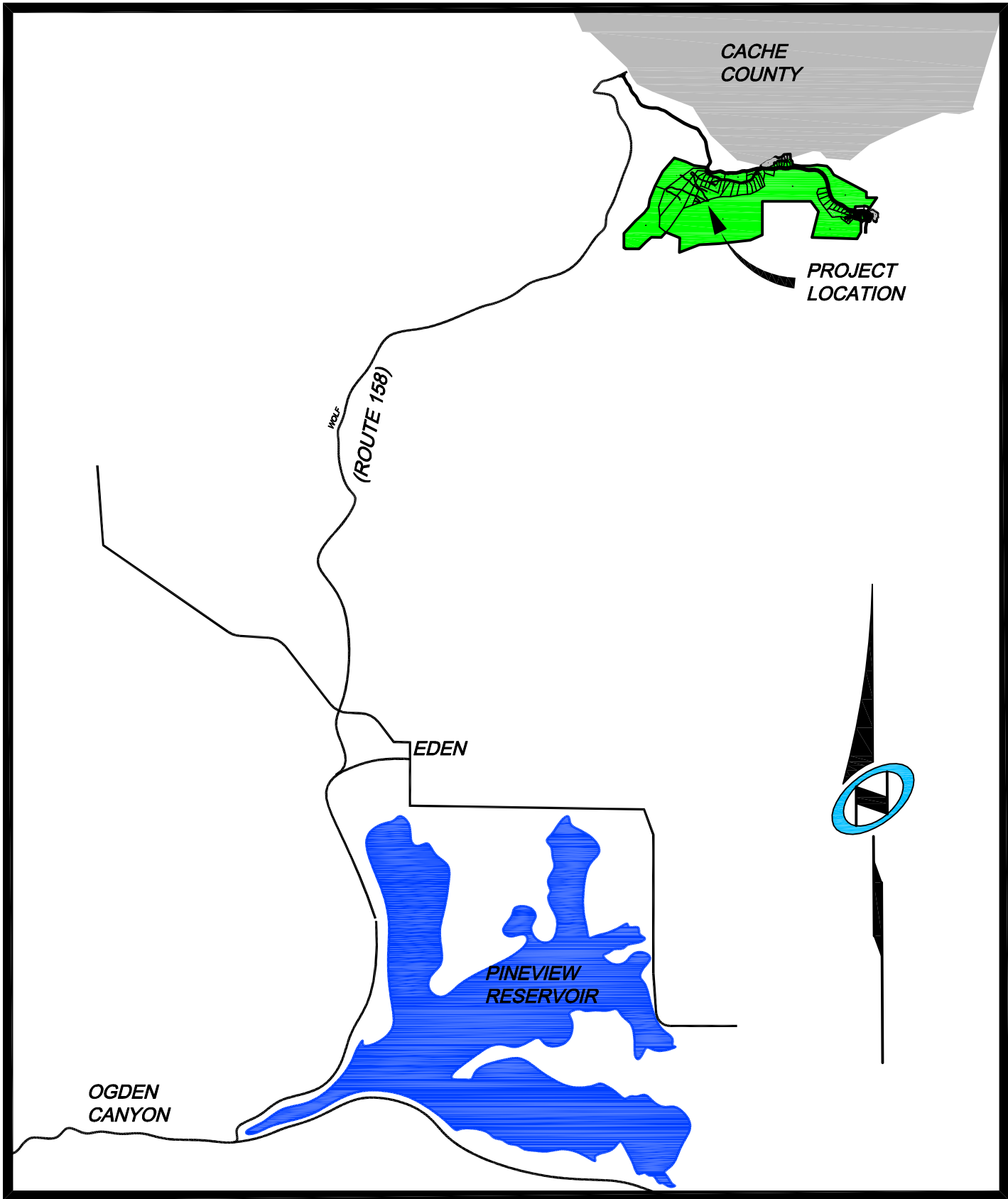
BEGINNING AT A POINT THAT IS SOUTH 01°09'02" WEST 2,468.42 FEET AND EAST 2,031.16 FEET, FROM THE WEST QUARTER CORNER OF SECTION 5, TOWNSHIP 7 NORTH, RANGE 1 EAST, SALT LAKE BASE AND MERIDIAN; RUNNING THENCE NORTH 83°22'20" EAST 385.15 FEET TO THE SOUTHWESTERLY RIGHT OF WAY LINE OF SUMMIT PASS; THENCE ALONG SAID SOUTHWESTERLY RIGHT OF WAY LINE OF SUMMIT PASS THE FOLLOWING TEN (10) COURSES: 1) SOUTHERLY ALONG A 603.42 FOOT RADIUS NON-TANGENT CURVE TO THE LEFT, (CHORD BEARS SOUTH 11°56'38" EAST A DISTANCE OF 99.48 FEET), THROUGH A CENTRAL ANGLE OF 09°27'25", A DISTANCE OF 99.60 FEET, 2) SOUTH 16°40'20" EAST 261.55 FEET, 3) SOUTHEASTERLY ALONG A 433.00 FOOT RADIUS TANGENT CURVE TO THE LEFT, (CHORD BEARS SOUTH 29°47'36" EAST A DISTANCE OF 147.16 FEET), THROUGH A CENTRAL ANGLE OF 25°42'21", A DISTANCE OF 144.27 FEET, 4) SOUTH 42°22'41" EAST 79.01 FEET, 5) SOUTHEASTERLY ALONG A 433.00 FOOT RADIUS TANGENT CURVE TO THE LEFT, (CHORD BEARS SOUTH 54°25'37" EAST A DISTANCE OF 180.78 FEET), THROUGH A CENTRAL ANGLE OF 24°05'53", A DISTANCE OF 182.11 FEET, 6) SOUTH 66°28'34" EAST 225.95 FEET, 7) SOUTHEASTERLY ALONG A 367.00 FOOT RADIUS TANGENT CURVE TO THE RIGHT, (CHORD BEARS SOUTH 57°28'49" EAST A DISTANCE OF 114.77 FEET), THROUGH A CENTRAL ANGLE OF 17°59'29", A DISTANCE OF 115.24 FEET, 8) SOUTH 48°29'04" EAST 89.38 FEET, 9) SOUTHEASTERLY ALONG A 433.00 FOOT RADIUS TANGENT CURVE TO THE LEFT, (CHORD BEARS SOUTH 66°06'41" EAST A DISTANCE OF 262.24 FEET), THROUGH A CENTRAL ANGLE OF 35°15'14", A DISTANCE OF 266.42 FEET AND 10) SOUTH 83°44'18" EAST 160.34 FEET; THENCE SOUTH 01°26'03" WEST 47.96 FEET; THENCE EASTERLY ALONG A 482.00 FOOT RADIUS NON-TANGENT CURVE TO THE LEFT, (CHORD BEARS SOUTH 83°43'36" EAST A DISTANCE OF 203.87 FEET), THROUGH A CENTRAL ANGLE OF 24°25'07", A DISTANCE OF 205.42 FEET; THENCE NORTH 84°03'51" EAST 138.80 FEET; THENCE EASTERLY ALONG A 143.00 FOOT RADIUS TANGENT CURVE TO THE RIGHT, (CHORD BEARS NORTH 89°51'47" EAST A DISTANCE OF 28.90 FEET), THROUGH A CENTRAL ANGLE OF 11°35'53", A DISTANCE OF 28.95 FEET; THENCE NORTH 05°39'44" EAST 64.51 FEET TO SAID SOUTHWESTERLY RIGHT OF WAY LINE; THENCE ALONG SAID RIGHT OF WAY LINE THE FOLLOWING TWO (2) COURSES: 1) SOUTHEASTERLY ALONG A 217.00 FOOT RADIUS NON-TANGENT CURVE TO THE RIGHT, (CHORD BEARS SOUTH 31°41'30" EAST A DISTANCE OF 341.83 FEET), THROUGH A CENTRAL ANGLE OF 103°58'47", A DISTANCE OF 37.40 FEET AND 2) SOUTH 20°16'24" EAST 132.23 FEET TO THE NORTHERLY RIGHT OF WAY LINE OF SPRING PARK ROAD; THENCE ALONG SAID RIGHT OF WAY LINE OF SPRING PARK ROAD THE FOLLOWING TWENTY-THREE (23) COURSES: 1) WESTERLY ALONG A 93.00 FOOT RADIUS NON-TANGENT CURVE TO THE LEFT, (CHORD BEARS SOUTH 86°35'01" WEST A DISTANCE OF 37.32 FEET), THROUGH A CENTRAL ANGLE OF 23°09'03", A DISTANCE OF 37.58 FEET, 2) SOUTHWESTERLY ALONG A 93.00 FOOT RADIUS COMPOUND CURVE TO THE LEFT, (CHORD BEARS SOUTH 67°29'35" WEST A DISTANCE OF 24.33 FEET), THROUGH A CENTRAL ANGLE OF 15°01'49", A DISTANCE OF 24.40 FEET, 3) SOUTH 59°58'41" WEST 28.58 FEET, 4) SOUTH 59°58'41" WEST 23.81 FEET, 5) WESTERLY ALONG A 102.00 FOOT RADIUS TANGENT CURVE TO THE RIGHT, (CHORD BEARS NORTH 86°21'09" WEST A DISTANCE OF 113.10 FEET), THROUGH A CENTRAL ANGLE OF 67°20'21", A DISTANCE OF 119.88 FEET, 6) NORTH 52°40'58" WEST 59.72 FEET, 7) NORTHWESTERLY ALONG A 268.00 FOOT RADIUS TANGENT CURVE TO THE LEFT, (CHORD BEARS NORTH 65°16'53" WEST A DISTANCE OF 116.91 FEET), THROUGH A CENTRAL ANGLE OF 25°11'49", A DISTANCE OF 117.86 FEET, 8) NORTH 77°52'47" WEST 144.40 FEET, 9) WESTERLY ALONG A 268.00 FOOT RADIUS TANGENT CURVE TO THE LEFT, (CHORD BEARS SOUTH 89°14'55" WEST A DISTANCE OF 119.40 FEET), THROUGH A CENTRAL ANGLE OF 25°14'36", A DISTANCE OF 120.41 FEET, 10) SOUTH 76°22'37" WEST 117.26 FEET, 11) WESTERLY ALONG A 232.00 FOOT RADIUS TANGENT CURVE TO THE RIGHT, (CHORD BEARS SOUTH 88°58'58" WEST A DISTANCE OF 101.27 FEET), THROUGH A CENTRAL ANGLE OF 25°12'43", A DISTANCE OF 102.09 FEET, 12) NORTH 78°24'40" WEST 7.67 FEET, 13) NORTHWESTERLY ALONG A 18.00 FOOT RADIUS TANGENT CURVE TO THE RIGHT, (CHORD BEARS NORTH 50°04'54" WEST A DISTANCE OF 17.08 FEET), THROUGH A CENTRAL ANGLE OF 56°39'33", A DISTANCE OF 17.80 FEET, 14) SOUTHERLY ALONG A 47.50 FOOT RADIUS REVERSE CURVE TO THE LEFT, (CHORD BEARS SOUTH 11°35'20" WEST A DISTANCE OF 52.21 FEET), THROUGH A CENTRAL ANGLE OF 29°31'06", A DISTANCE OF 243.17 FEET, 15) EASTERLY ALONG A 18.00 FOOT RADIUS REVERSE CURVE TO THE RIGHT, (CHORD BEARS NORTH 73°15'33" EAST A DISTANCE OF 17.08 FEET), THROUGH A CENTRAL ANGLE OF 56°39'33", A DISTANCE OF 17.80 FEET, 16) SOUTH 78°24'40" EAST 7.68 FEET, 17) SOUTHEASTERLY ALONG A 268.00 FOOT RADIUS NON-TANGENT CURVE TO THE LEFT, (CHORD BEARS NORTH 88°59'01" EAST A DISTANCE OF 116.98 FEET), THROUGH A CENTRAL ANGLE OF 25°12'47", A DISTANCE OF 117.93 FEET, 18) NORTH 76°22'37" EAST 117.26 FEET, 19) EASTERLY ALONG A 232.00 FOOT RADIUS TANGENT CURVE TO THE RIGHT, (CHORD BEARS NORTH 89°14'55" EAST A DISTANCE OF 103.36 FEET), THROUGH A CENTRAL ANGLE OF 25°44'36", A DISTANCE OF 104.24 FEET, 20) SOUTH 77°52'47" EAST 144.40 FEET, 21) SOUTHEASTERLY ALONG A 232.00 FOOT RADIUS TANGENT CURVE TO THE RIGHT, (CHORD BEARS SOUTH 65°16'53" EAST A DISTANCE OF 101.21 FEET), THROUGH A CENTRAL ANGLE OF 25°11'49", A DISTANCE OF 102.03 FEET, 22) SOUTH 52°40'58" EAST 59.72 FEET AND 23) SOUTHEASTERLY ALONG A 138.00 FOOT RADIUS TANGENT CURVE TO THE LEFT, (CHORD BEARS SOUTH 62°13'30" EAST A DISTANCE OF 45.75 FEET), THROUGH A CENTRAL ANGLE OF 19°05'03", A DISTANCE OF 45.97 FEET; THENCE SOUTH 18°13'59" WEST 71.30 FEET; THENCE WEST 41.88 FEET; THENCE SOUTH 414.03 FEET; THENCE SOUTH 29°11'14" WEST 337.79 FEET; THENCE NORTH 88°18'57" WEST 1,941.65 FEET; THENCE NORTH 14°02'38" EAST 1,143.47 FEET; THENCE NORTH 35°56'05" WEST 538.55 FEET; THENCE NORTH 34°42'50" EAST 437.67 FEET; THENCE NORTH 22°00'21" EAST 196.22 FEET TO THE POINT OF BEGINNING.

CONTAINING 3,127,453 SQUARE FEET OR 71.796 ACRES.

TOGETHER WITH (AREA 4)

BEGINNING AT A POINT THAT IS ON THE EASTERLY RIGHT OF WAY LINE OF SUMMIT PASS, SAID POINT BEING SOUTH 3,424.35 FEET AND EAST 4,053.56 FEET FROM THE WEST QUARTER CORNER OF SECTION 5, TOWNSHIP 7 NORTH, RANGE 2 EAST, SALT LAKE BASE AND MERIDIAN; RUNNING THENCE NORTH 43°58'09" EAST 130.63 FEET; THENCE NORTH 43°58'09" EAST 23.00 FEET; THENCE SOUTH 46°01'51" EAST 43.00 FEET; THENCE SOUTHERLY ALONG A 23.00 FOOT RADIUS NON-TANGENT CURVE TO THE LEFT, (CHORD BEARS SOUTH 07°01'52" EAST A DISTANCE OF 32.53 FEET), THROUGH A CENTRAL ANGLE OF 90°00'01", 36.13 FEET; THENCE NORTH 46°01'52" WEST 0.00 FEET; THENCE SOUTH 46°01'51" EAST 34.34 FEET; THENCE NORTH 43°58'09" EAST 40.00 FEET; THENCE SOUTH 83°27'23" EAST 77.29 FEET; THENCE SOUTH 53°50'59" EAST 246.81 FEET; THENCE SOUTH 05°42'44" EAST 21.86 FEET; THENCE SOUTH 05°42'44" EAST 141.88 FEET; THENCE SOUTH 59°58'58" WEST 65.49 FEET; THENCE SOUTH 13°45'23" WEST 123.76 FEET; THENCE SOUTH 59°58'58" WEST 5.57 FEET; THENCE SOUTH 30°01'02" EAST 37.31 FEET; THENCE SOUTH 59°58'58" WEST 36.00 FEET; THENCE NORTH 30°01'02" WEST 126.68 FEET; THENCE NORTHWESTERLY ALONG A 343.00 FOOT RADIUS TANGENT CURVE TO THE RIGHT, (CHORD BEARS NORTH 21°30'10" WEST A DISTANCE OF 101.57 FEET), THROUGH A CENTRAL ANGLE OF 17°01'49", 101.94 FEET; THENCE SOUTH 85°44'00" WEST 97.02 FEET; THENCE SOUTHERLY ALONG A 218.00 FOOT RADIUS NON-TANGENT CURVE TO THE RIGHT, (CHORD BEARS SOUTH 10°22'29" WEST A DISTANCE OF 74.77 FEET), THROUGH A CENTRAL ANGLE OF 19°44'57", 75.14 FEET; THENCE SOUTH 20°14'58" WEST 79.14 FEET; THENCE SOUTHWESTERLY ALONG A 58.50 FOOT RADIUS TANGENT CURVE TO THE RIGHT, (CHORD BEARS SOUTH 65°14'58" WEST A DISTANCE OF 82.73 FEET), THROUGH A CENTRAL ANGLE OF 90°00'00", 91.84 FEET; THENCE NORTH 69°45'02" WEST 36.55 FEET TO SAID EASTERLY RIGHT OF WAY LINE OF SUMMIT PASS; THENCE ALONG SAID EASTERLY RIGHT OF WAY LINE THE FOLLOWING TWO (2) COURSES: 1) NORTH 20°16'24" EAST 132.23 FEET, 2) NORTHERLY ALONG A 283.00 FOOT RADIUS TANGENT CURVE TO THE LEFT, (CHORD BEARS NORTH 02°28'52" EAST A DISTANCE OF 172.95 FEET), THROUGH A CENTRAL ANGLE OF 35°35'04", 175.76 FEET; THENCE NORTH 85°44'00" EAST 52.01 FEET; THENCE NORTHERLY ALONG A 118.00 FOOT RADIUS NON-TANGENT CURVE TO THE RIGHT, (CHORD BEARS NORTH 15°18'44" EAST A DISTANCE OF 78.73 FEET), THROUGH A CENTRAL ANGLE OF 38°58'23", 80.26 FEET; THENCE NORTH 34°47'56" EAST 6.10 FEET; THENCE NORTHERLY ALONG A 23.00 FOOT RADIUS TANGENT CURVE TO THE LEFT, (CHORD BEARS NORTH 05°36'59" WEST A DISTANCE OF 29.82 FEET), THROUGH A CENTRAL ANGLE OF 80°49'44", 32.45 FEET; THENCE NORTH 46°01'51" WEST 5.45 FEET; THENCE NORTH 46°01'51" WEST 64.33 FEET; THENCE WESTERLY ALONG A 23.00 FOOT RADIUS TANGENT CURVE TO THE LEFT, (CHORD BEARS SOUTH 88°58'09" WEST A DISTANCE OF 32.53 FEET), THROUGH A CENTRAL ANGLE OF 90°00'00", 36.13 FEET; THENCE SOUTH 43°58'09" WEST 71.63 FEET TO SAID EASTERLY RIGHT OF WAY LINE OF SUMMIT PASS; THENCE NORTHWESTERLY ALONG A 283.00 FOOT RADIUS NON-TANGENT CURVE TO THE LEFT, (CHORD BEARS NORTH 46°01'51" WEST A DISTANCE OF 50.00 FEET), THROUGH A CENTRAL ANGLE OF 10°08'10", ALONG SAID EASTERLY RIGHT OF WAY LINE 50.07 FEET TO THE POINT OF BEGINNING.

CONTAINING 138,293 SQUARE FEET OR 3.175 ACRES.



Vicinity Map

N.T.S.

SURVEYOR'S CERTIFICATE

I, Kevin T. Dawson, do hereby certify that I am a registered land surveyor, and that I hold certificate No. 7894020, as prescribed under the laws of the state of Utah. I further certify that by the authority of the owners, I have made a survey of the tract of land shown on this plat and described below, and have subdivided said tract of land into lots and that same streets, hereafter to be known as SUMMIT AT POWDER MOUNTAIN PHASE 1 has been correctly surveyed and staked on the ground as shown on this plat.

Kevin T. Dawson Date of Survey
Professional Land Surveyor
Utah Certificate No. 7892040

OWNER'S DEDICATION

Know all men by these presents that _____, the undersigned owner(s) of the above described tract of land, having caused the same to be subdivided into lots and streets to be hereafter known as:

SUMMIT AT POWDER MOUNTAIN PHASE 1

do hereby dedicate for perpetual use of the public all easements, trails and rights-of-way as shown on this plat as intended for Public use.

In witness whereof _____ have hereunto set _____ this _____ day of _____ A.D., 20 _____.

BY: _____

BY: _____

ITS: _____

ACKNOWLEDGMENT

State of Utah } S.S.
County of _____

The foregoing instrument was acknowledged before me this _____ day of _____ A.D., 20 _____, by _____, who is the _____ of _____.

Notary

My commission expires: _____ Residing at: _____

SUMMIT AT POWDER MOUNTAIN
PHASE 1
COVER SHEET, SIGNATURE

SUMMIT AT POWDER MOUNTAIN PHASE I

LOCATED IN THE NORTHEAST QUARTER OF SECTION 12, T 7N, R 1E, SLBM, AND SECTION 7, THE SOUTH HALF OF SECTIONS 5 & 6, AND THE NORTH HALF OF SECTION 8, T 7N, R 2E, SLBM.

NORTHWEST CORNER SECTION 5, TOWNSHIP 7 NORTH, RANGE 2 EAST SALT LAKE BASE AND MERIDIAN FOUND 1944 GLO BRASS CAP (CLOSING CORNER)

EAST QUARTER CORNER SECTION 5, TOWNSHIP 7 NORTH, RANGE 2 EAST SALT LAKE BASE AND MERIDIAN (CALCULATED)

EAST QUARTER CORNER SECTION 6, TOWNSHIP 7 NORTH, RANGE 2 EAST SALT LAKE BASE AND MERIDIAN FOUND 1941 GLO BRASS CAP

POWDER MOUNTAIN GROUP HOLDINGS 16-001-0017

WESTERN AMERICA HOLDING 16-001-0009

WESTERN AMERICA HOLDING 23-012-0030

WEST QUARTER CORNER SECTION 6, TOWNSHIP 7 NORTH, RANGE 2 EAST SALT LAKE BASE AND MERIDIAN (CALCULATED)

WESTERN AMERICA HOLDING 22-001-0002

SE 1/4 SECTION 1

SOUTHWEST CORNER SECTION 6, TOWNSHIP 7 NORTH, RANGE 2 EAST SALT LAKE BASE AND MERIDIAN (CALCULATED)

WESTERN AMERICA HOLDING 22-006-0018

NE 1/4 SECTION 12

ELKHORN LLC 22-006-0020

WESTERN AMERICA HOLDING 23-012-0069

WESTERN AMERICA HOLDING 23-012-0118

WESTERN AMERICA HOLDING 23-012-0118

EAST QUARTER CORNER SECTION 7, TOWNSHIP 7 NORTH, RANGE 2 EAST SALT LAKE BASE AND MERIDIAN (CALCULATED)

WESTERN AMERICA HOLDING 23-012-0032

WESTERN AMERICA HOLDING 23-012-0032

EAST QUARTER CORNER SECTION 8, TOWNSHIP 7 NORTH, RANGE 2 EAST SALT LAKE BASE AND MERIDIAN (CALCULATED)

POINT OF BEGINNING AREA 2

AREA 2 12 LOTS 1 PARCEL SEE SHEET 4 AND SHEET 8

POINT OF BEGINNING AREA 1 AND AREA 3

SOUTHEAST CORNER SECTION 6, TOWNSHIP 7 NORTH, RANGE 2 EAST SALT LAKE BASE AND MERIDIAN (CALCULATED)

AREA 2 12 LOTS 1 PARCEL SEE SHEET 4 AND SHEET 8

SOUTH QUARTER CORNER SECTION 5, TOWNSHIP 7 NORTH, RANGE 2 EAST SALT LAKE BASE AND MERIDIAN FOUND 1944 GLO BRASS CAP

SOUTHEAST CORNER SECTION 5, TOWNSHIP 7 NORTH, RANGE 2 EAST SALT LAKE BASE AND MERIDIAN (CALCULATED)

POINT OF BEGINNING AREA 4

AREA 4 21 LOTS AND 2 PARCELS SEE SHEET 6

AREA 3 60 LOTS 3 PARCELS SEE SHEET 5, SHEET 9, SHEET 10, AND SHEET 11,

NW 1/4 SECTION 8

NE 1/4 SECTION 8

LEGEND

- BOUNDARY LINE
- LOT LINE
- SECTION LINE
- QUARTER SECTION LINE
- COUNTY LINE
- ADJOINER DEED LINES
- EASEMENT LINE
- AREA TIE LINES

CALCULATED SECTION CORNER AS NOTED

SECTION CORNER AS NOTED

SCALE
HORIZONTAL: 1" = 400'
0 100 200 400 600

SUMMIT AT POWDER MOUNTAIN PHASE I

SECTION BREAKDOWN, BASIS OF BEARINGS AND BOUNDARY OVERVIEW

LOCATED IN THE NORTHEAST QUARTER OF SECTION 12, T 7N, R 1E, SLBM, AND SECTION 7, THE SOUTH HALF OF SECTIONS 5 & 6, AND THE NORTH HALF OF SECTION 8, T 7N, R 2E, SLBM.

Sheet 2 of 10

NV5

NOLTE VERTICALFIVE

5217 SOUTH STATE STREET, SUITE 300
801.743.1300 TEL 801.743.0300 FAX

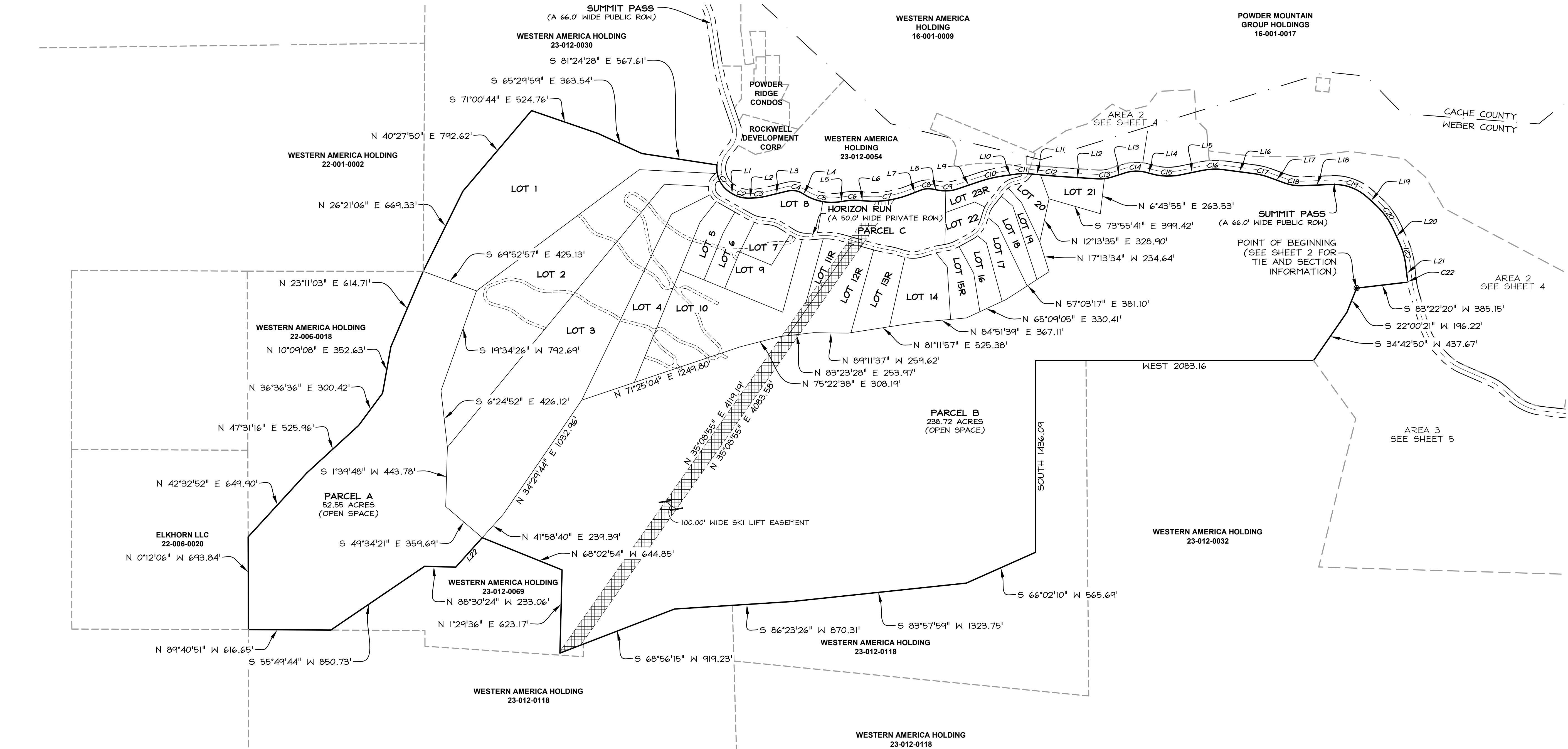
MURRAY, UT 84107
WWW.NOLTE.COM

STATE OF UTAH, COUNTY OF WEBER, RECORDED AND FILED AT THE REQUEST OF: ENTRY NO: DATE: TIME: BOOK: PAGE:

FEE \$ WEBER COUNTY RECORDER

SUMMIT AT POWDER MOUNTAIN PHASE I

LOCATED IN THE NORTHEAST QUARTER OF SECTION 12, T 7N, R 1E, SLBM, AND SECTION 7, THE SOUTH HALF OF SECTIONS 5 & 6, AND THE NORTH HALF OF SECTION 8, T 7N, R 2E, SLBM.

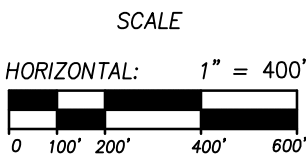
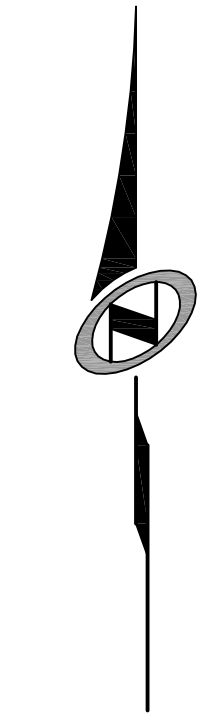


CURVE TABLE				
CURVE	LENGTH	RADIUS	LONG CHORD	LENGTH
C1	246.37'	213.00'	S 26°23'17" E	232.86'
C2	118.05'	215.83'	S 75°11'36" E	116.58'
C3	107.33'	483.21'	N 82°46'27" E	107.11'
C4	117.62'	147.00'	S 80°40'01" E	114.51'
C5	271.10'	383.00'	S 78°01'21" E	265.47'
C6	93.18'	418.71'	N 88°04'31" E	92.99'
C7	326.41'	733.00'	N 81°41'37" E	323.72'
C8	93.79'	167.00'	N 85°01'33" E	92.56'
C9	147.16'	283.00'	N 86°13'07" E	145.50'
C10	181.70'	967.00'	N 76°42'19" E	181.44'
C11	92.26'	393.15'	N 88°48'39" E	92.04'
C12	101.09'	3056.76'	S 85°24'51" E	101.09'
C13	112.32'	300.82'	N 82°56'30" E	111.67'
C14	152.87'	267.00'	N 88°38'49" E	150.79'
C15	224.93'	483.00'	S 88°17'33" E	222.90'
C16	156.35'	467.00'	N 87°57'27" E	155.62'
C17	101.87'	467.00'	S 76°12'08" E	101.66'
C18	124.12'	333.00'	S 81°03'41" E	128.31'
C19	283.40'	967.00'	S 70°02'50" E	276.41'
C20	233.16'	567.00'	S 36°08'41" E	231.52'
C21	175.52'	567.00'	S 15°29'46" E	174.82'
C22	6.19'	603.42'	S 6°55'18" E	6.19'

LINE TABLE		
LINE	LENGTH	DIRECTION
L1	20.07'	S 59°31'27" E
L2	27.32'	N 89°08'14" E
L3	166.99'	N 76°24'39" E
L4	14.03'	S 57°44'42" E
L5	53.97'	N 81°42'00" E
L6	56.26'	S 85°32'57" E
L7	94.64'	N 68°56'11" E
L8	41.36'	S 78°53'05" E
L9	174.07'	N 71°19'19" E
L10	101.93'	N 82°05'18" E
L11	114.11'	S 84°28'01" E
L12	297.63'	S 86°21'42" E
L13	103.92'	N 72°14'41" E
L14	46.14'	S 74°57'04" E
L15	163.17'	N 78°21'59" E
L16	241.01'	S 82°27'04" E
L17	128.40'	S 69°57'12" E
L18	231.14'	N 87°49'50" E
L19	81.02'	S 47°55'31" E
L20	113.52'	S 24°21'51" E
L21	118.34'	S 6°37'40" E
L22	296.34'	S 41°58'40" W

LEGEND

- BOUNDARY LINE
- LOT LINE
- SECTION LINE
- QUARTER SECTION LINE
- COUNTY LINE
- ADJOINER DEED LINES
- AREA TIE LINES
- CALCULATED SECTION CORNER AS NOTED
- SECTION CORNER AS NOTED
- BUILDABLE AREA
- EASEMENT



SUMMIT AT POWDER MOUNTAIN PHASE I

AREA I BOUNDARY, PARCEL A AND PARCEL B

LOCATED IN THE NORTHEAST QUARTER OF SECTION 12, T 7N, R 1E, SLBM, AND SECTION 7, THE SOUTH HALF OF SECTIONS 5 & 6, AND THE NORTH HALF OF SECTION 8, T 7N, R 2E, SLBM.

Sheet 3 of 10

NV5

NOLTE VERTICALFIVE

5217 SOUTH STATE STREET, SUITE 300
801.743.1300 TEL 801.743.0300 FAX

MURRAY, UT 84107
WWW.NOLTE.COM

RECORDED #

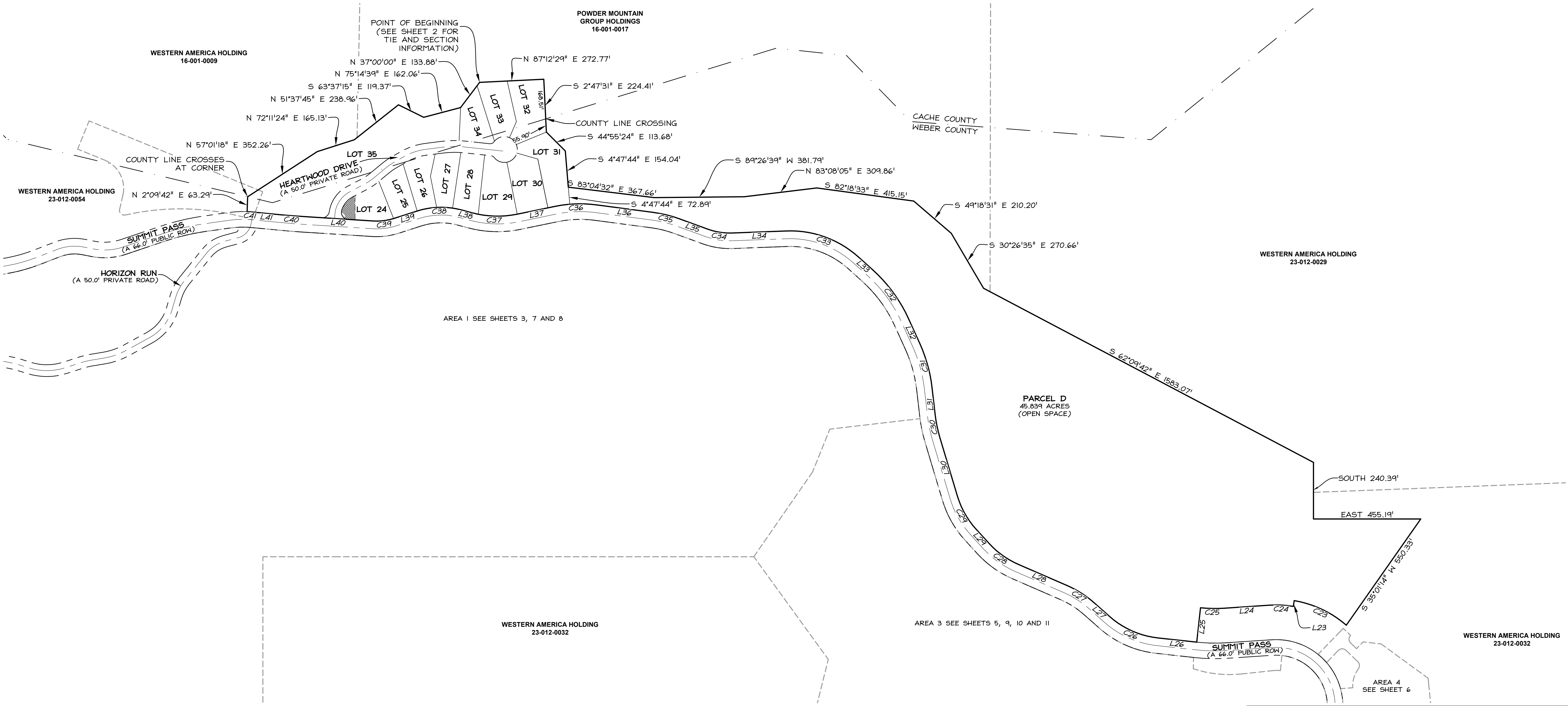
STATE OF UTAH, COUNTY OF WEBER, RECORDED AND FILED AT THE REQUEST OF: ENTRY NO:

DATE: TIME: BOOK: PAGE:

FEE \$ WEBER COUNTY RECORDER

SUMMIT AT POWDER MOUNTAIN PHASE I

LOCATED IN THE NORTHEAST QUARTER OF SECTION 12, T 7N, R 1E, SLBM, AND SECTION 7, THE SOUTH HALF OF SECTIONS 5 & 6, AND THE NORTH HALF OF SECTION 8, T 7N, R 2E, SLBM.

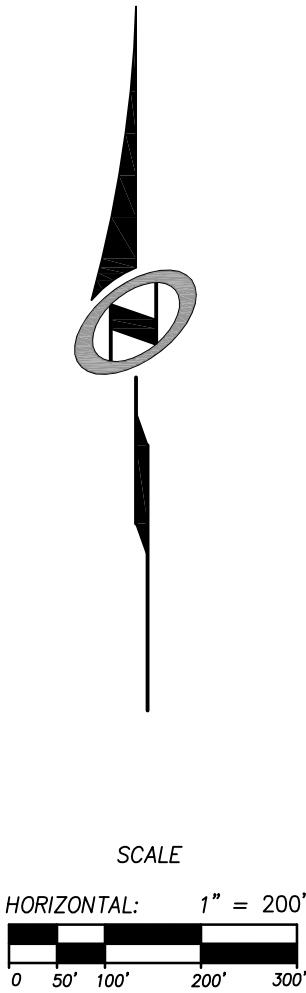


CURVE TABLE				
CURVE	LENGTH	RADIUS	LONG CHORD	LENGTH
C23	247.36'	455.00'	N 64°45'19" W	244.33'
C24	101.19'	430.00'	N 87°04'17" W	100.96'
C25	100.23'	570.00'	N 88°46'32" W	100.10'
C26	225.81'	367.00'	N 66°06'41" W	222.27'
C27	135.97'	433.00'	N 57°28'49" W	135.41'
C28	154.36'	367.00'	N 54°25'37" W	153.22'
C29	164.65'	367.00'	N 29°31'31" W	163.28'
C30	94.21'	537.42'	N 11°39'00" W	94.09'
C31	195.95'	633.00'	N 15°29'46" W	195.17'
C32	260.30'	633.00'	N 36°08'41" W	258.47'
C33	334.37'	433.00'	N 70°02'50" W	326.12'
C34	103.53'	267.00'	N 81°03'41" W	102.88'
C35	116.26'	533.00'	N 76°12'08" W	116.03'
C36	178.45'	533.00'	S 87°57'27" W	177.61'
C37	194.19'	417.00'	N 88°17'33" W	192.44'
C38	190.65'	333.00'	S 88°38'49" W	188.06'
C39	87.68'	234.82'	S 82°56'30" W	87.17'
C40	98.91'	2990.76'	N 85°24'51" W	98.90'
C41	27.02'	459.15'	N 86°09'09" W	27.01'

LINE TABLE		
LINE	LENGTH	DIRECTION
L23	25.00'	S 9°40'13" W
L24	193.22'	S 86°11'14" W
L25	147.00'	S 6°15'42" W
L26	166.47'	N 83°44'18" W
L27	89.38'	N 48°29'04" W
L28	225.95'	N 66°28'34" W
L29	79.01'	N 42°22'41" W
L30	261.55'	N 16°40'20" W
L31	118.34'	N 6°37'40" W
L32	113.52'	N 24°21'51" W
L33	81.02'	N 47°55'31" W
L34	231.14'	S 87°49'50" W
L35	128.40'	N 69°57'12" W
L36	241.01'	N 82°27'04" W
L37	163.17'	N 78°21'59" E
L38	46.14'	N 74°57'04" W
L39	103.92'	S 72°14'41" W
L40	297.63'	N 86°21'42" W
L41	114.11'	N 84°28'01" W

LEGEND

- BOUNDARY LINE
- LOT LINE
- SECTION LINE
- QUARTER SECTION LINE
- COUNTY LINE
- ADJOINER DEED LINES
- AREA TIE LINES
- CALCULATED SECTION CORNER AS NOTED
- SECTION CORNER AS NOTED
- BUILDABLE AREA
- EASEMENT



SUMMIT AT POWDER MOUNTAIN
PHASE I

AREA 2 BOUNDARY & PARCEL D

LOCATED IN THE NORTHEAST QUARTER OF SECTION 12, T 7N, R 1E, SLBM, AND SECTION 7, THE SOUTH HALF OF SECTIONS 5 & 6, AND THE NORTH HALF OF SECTION 8, T 7N, R 2E, SLBM.

Sheet 4 of 10

NV5

NOLTE VERTICALFIVE

5217 SOUTH STATE STREET, SUITE 300
801.743.1300 TEL 801.743.0300 FAX

MURRAY, UT 84107
WWW.NOLTE.COM

RECORDED #

STATE OF UTAH, COUNTY OF WEBER, RECORDED AND FILED AT THE REQUEST OF: ENTRY NO:

DATE: TIME: BOOK: PAGE:

FEE \$ WEBER COUNTY RECORDER

SUMMIT AT POWDER MOUNTAIN PHASE 1

LOCATED IN THE NORTHEAST QUARTER OF SECTION 12, T 7N, R 1E, SLBM, AND SECTION 7, THE SOUTH HALF OF SECTIONS 5 & 6, AND THE NORTH HALF OF SECTION 8, T 7N, R 2E, SLBM.

CURVE TABLE				
CURVE	LENGTH	RADIUS	LONG CHORD	LENGTH
C42	99.60'	603.42'	N 11°56'38" W	99.48'
C43	194.27'	433.00'	N 29°31'31" W	192.64'
C44	182.11'	433.00'	N 54°25'37" W	180.78'
C45	115.24'	367.00'	S 57°28'49" E	114.77'
C46	266.42'	433.00'	N 66°06'41" W	262.24'
C47	205.42'	482.00'	N 83°43'36" W	203.87'
C48	28.95'	143.00'	N 89°51'47" E	28.90'
C49	393.62'	217.00'	S 31°41'30" E	341.83'
C50	37.58'	93.00'	S 86°35'01" W	37.32'
C51	24.40'	93.00'	S 67°29'35" W	24.33'
C52	119.88'	102.00'	S 86°21'09" E	113.10'
C53	117.86'	268.00'	N 65°16'53" W	116.91'
C54	120.41'	268.00'	S 89°14'55" W	119.40'
C55	102.09'	232.00'	N 88°58'58" E	101.27'
C56	17.80'	18.00'	S 50°04'54" E	17.08'
C57	243.17'	47.50'	S 11°35'20" W	52.21'
C58	17.80'	18.00'	S 73°15'33" W	17.08'
C59	117.93'	268.00'	N 88°59'01" E	116.98'
C60	104.24'	232.00'	S 89°14'55" W	103.36'
C61	102.03'	232.00'	N 65°16'53" W	101.21'
C62	45.97'	138.00'	S 62°13'30" E	45.75'

LINE TABLE		
LINE	LENGTH	DIRECTION
L42	261.55'	S 16°40'20" E
L43	79.01'	S 42°22'41" E
L44	225.95'	S 66°28'34" E
L45	89.38'	S 48°29'04" E
L46	160.34'	S 83°44'18" E
L47	47.96'	S 1°26'03" W
L48	138.80'	N 84°03'51" E
L49	64.51'	N 5°39'44" E
L50	37.40'	S 20°16'24" W
L51	28.58'	S 59°58'41" W
L52	23.81'	S 59°58'41" W
L53	59.72'	N 52°40'58" W
L54	144.40'	N 77°52'47" W
L55	117.26'	S 76°22'37" W
L56	7.67'	N 78°24'40" W
L57	7.67'	S 78°24'40" E
L58	117.26'	N 76°22'37" E
L59	144.40'	S 77°52'47" E
L60	59.72'	S 52°40'58" E
L61	71.30'	N 18°13'59" E
L62	41.88'	N 90°00'00" E

LEGEND

- BOUNDARY LINE
- LOT LINE
- SECTION LINE
- QUARTER SECTION LINE
- COUNTY LINE
- ADJOINER DEED LINES
- AREA TIE LINES
- CALCULATED SECTION CORNER AS NOTED
- SECTION CORNER AS NOTED
- BUILDABLE AREA
- EASEMENT

SUMMIT AT POWDER MOUNTAIN PHASE 1

AREA 3 BOUNDARY AND PARCEL H

LOCATED IN THE NORTHEAST QUARTER OF SECTION 12, T 7N, R 1E, SLBM, AND SECTION 7, THE SOUTH HALF OF SECTIONS 5 & 6, AND THE NORTH HALF OF SECTION 8, T 7N, R 2E, SLBM.

Sheet 5 of 10

NV5

NOLTE VERTICALFIVE

5217 SOUTH STATE STREET, SUITE 300
801.743.1300 TEL. 801.743.0300 FAX

MURRAY, UT 84107
WWW.NOLTE.COM

RECORDED #

STATE OF UTAH, COUNTY OF WEBER, RECORDED AND FILED AT THE REQUEST OF: _____ ENTRY NO: _____

DATE: _____ TIME: _____ BOOK: _____ PAGE: _____

FEE \$ _____ WEBER COUNTY RECORDER

XREFS:

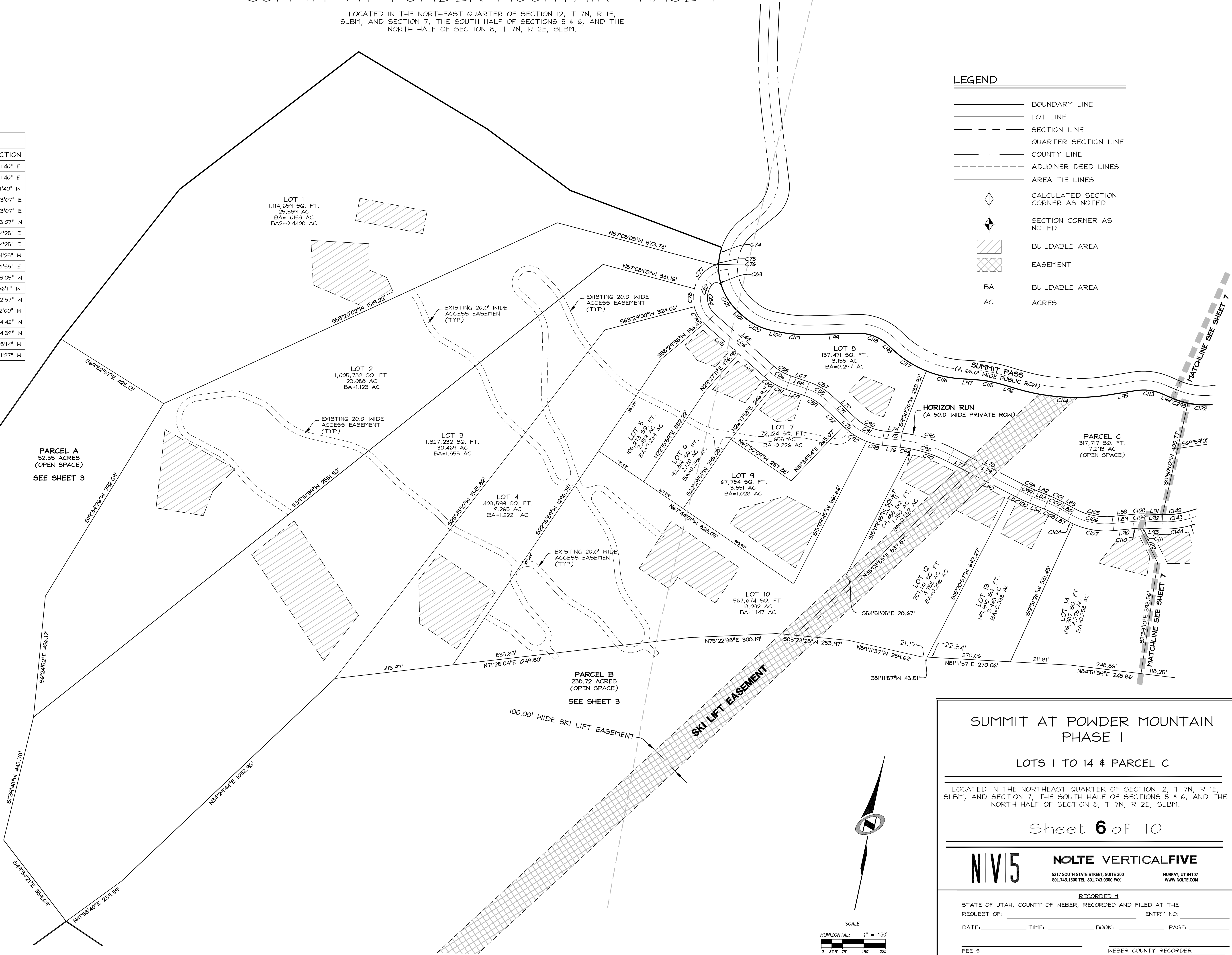
SUMMIT AT POWDER MOUNTAIN PHASE I

LOCATED IN THE NORTHEAST QUARTER OF SECTION 12, T 7N, R 1E, SLBM, AND SECTION 7, THE SOUTH HALF OF SECTIONS 5 & 6, AND THE NORTH HALF OF SECTION 8, T 7N, R 2E, SLBM.

LINE TABLE		
LINE	LENGTH	DIRECTION
L63	155.25'	N 60°32'49" W
L64	121.35'	N 60°32'49" W
L65	276.60'	S 60°32'49" E
L66	276.60'	S 60°32'49" E
L67	67.47'	S 83°22'38" E
L68	67.47'	S 83°22'38" E
L69	67.47'	N 83°22'38" W
L70	107.81'	S 58°25'06" E
L71	107.81'	S 58°25'06" E
L72	98.53'	N 58°25'06" W
L73	9.28'	N 58°25'06" W
L74	63.25'	N 84°20'22" E
L75	63.25'	N 84°20'22" E
L76	63.25'	S 84°20'22" W
L77	85.26'	N 74°39'03" W
L78	271.59'	S 74°39'03" E
L79	271.59'	S 74°39'03" E
L80	165.94'	N 74°39'03" W
L81	20.39'	N 74°39'03" W

LINE TABLE		
LINE	LENGTH	DIRECTION
L82	55.85'	S 80°11'40" E
L83	55.85'	S 80°11'40" E
L84	55.85'	N 80°11'40" W
L85	42.25'	S 72°43'07" E
L86	42.25'	S 72°43'07" E
L87	42.25'	N 72°43'07" W
L88	72.15'	N 72°14'25" E
L89	72.15'	N 72°14'25" E
L90	72.15'	S 72°14'25" W
L91	58.94'	N 80°21'55" E
L94	41.36'	N 78°53'05" W
L95	94.64'	S 68°56'11" W
L96	56.26'	N 85°32'57" W
L97	53.97'	S 81°42'00" W
L98	14.03'	N 57°44'42" W
L99	166.99'	S 76°24'39" W
L100	27.32'	S 89°08'14" W
L101	20.07'	N 59°31'27" W

CURVE TABLE				
CURVE	LENGTH	RADIUS	LONG CHORD	LENGTH
C74	45.95'	213.00'	N 24°45'19" E	45.86'
C75	21.20'	20.00'	N 24°45'19" E	20.22'
C76	0.26'	20.00'	N 55°29'54" E	0.26'
C77	115.65'	125.00'	S 29°22'12" W	111.57'
C78	64.10'	125.00'	S 11°49'31" E	63.40'
C79	69.49'	125.00'	S 42°26'34" E	68.60'
C80	43.66'	225.00'	S 66°06'19" E	43.59'
C81	46.00'	225.00'	S 77°31'14" E	45.92'
C82	238.95'	100.00'	S 7°54'24" W	186.02'
C83	43.21'	20.00'	S 87°20'05" W	35.28'
C84	112.55'	75.00'	S 17°33'18" E	102.28'
C85	69.73'	175.00'	S 71°57'44" E	69.27'
C86	79.69'	200.00'	S 71°57'44" E	79.17'
C87	98.01'	225.00'	N 70°53'52" W	97.24'
C88	87.12'	200.00'	N 70°53'52" W	86.44'
C89	76.23'	175.00'	N 70°53'52" W	75.63'
C90	113.75'	175.00'	S 77°02'22" E	111.76'
C91	130.00'	200.00'	S 77°02'22" E	127.72'
C92	89.53'	225.00'	S 69°49'03" E	88.94'
C93	56.72'	225.00'	S 88°26'19" E	56.57'
C94	37.87'	475.00'	S 86°37'24" W	37.86'
C95	192.51'	525.00'	N 85°09'21" W	191.44'
C96	183.35'	500.00'	N 85°09'21" W	182.32'
C97	136.31'	475.00'	N 82°52'18" W	135.84'
C98	45.96'	475.00'	S 77°25'21" E	45.94'
C99	48.38'	500.00'	S 77°25'21" E	48.36'
C100	50.80'	525.00'	S 77°25'21" E	50.78'
C101	55.45'	425.00'	N 76°27'23" W	55.41'
C102	52.19'	400.00'	N 76°27'23" W	52.15'
C103	48.93'	375.00'	N 76°27'23" W	48.89'
C104	22.83'	275.00'	S 75°05'50" E	22.83'
C105	137.61'	225.00'	N 89°45'39" E	135.47'
C106	152.90'	250.00'	N 89°45'39" E	150.52'
C107	145.35'	275.00'	N 87°22'55" E	143.67'
C108	46.09'	325.00'	S 76°18'10" W	46.05'
C109	42.54'	300.00'	S 76°18'10" W	42.51'
C110	21.01'	275.00'	S 74°25'42" W	21.00'
C111	17.99'	275.00'	S 78°29'28" W	17.99'
C113	93.79'	167.00'	S 85°01'33" W	92.56'
C114	326.41'	733.00'	N 81°41'37" E	323.72'
C115	93.18'	418.71'	S 88°04'31" W	92.99'
C116	122.41'	383.00'	S 89°08'39" E	121.89'
C117	148.69'	383.00'	S 68°52'00" E	147.76'
C118	117.62'	147.00'	N 80°40'01" W	114.51'
C119	107.33'	483.21'	N 82°46'27" E	107.11'
C120	118.05'	215.83'	S 75°11'37" E	116.58'
C121	106.90'	213.00'	S 45°08'45" E	105.79'



LEGEND

- BOUNDARY LINE
- LOT LINE
- SECTION LINE
- QUARTER SECTION LINE
- COUNTY LINE
- ADJOINER DEED LINES
- AREA TIE LINES
- CALCULATED SECTION CORNER AS NOTED
- SECTION CORNER AS NOTED
- BUILDABLE AREA
- EASEMENT
- BA BUILDABLE AREA
- AC ACRES

SUMMIT AT POWDER MOUNTAIN PHASE I

LOTS 1 TO 14 & PARCEL C

LOCATED IN THE NORTHEAST QUARTER OF SECTION 12, T 7N, R 1E, SLBM, AND SECTION 7, THE SOUTH HALF OF SECTIONS 5 & 6, AND THE NORTH HALF OF SECTION 8, T 7N, R 2E, SLBM.

Sheet 6 of 10

NV5

NOLTE VERTICALFIVE

5212 SOUTH STATE STREET, SUITE 300
801.743.1300 TEL 801.743.0300 FAX

MURRAY, UT 84107
WWW.NOLTE.COM

RECORDED #

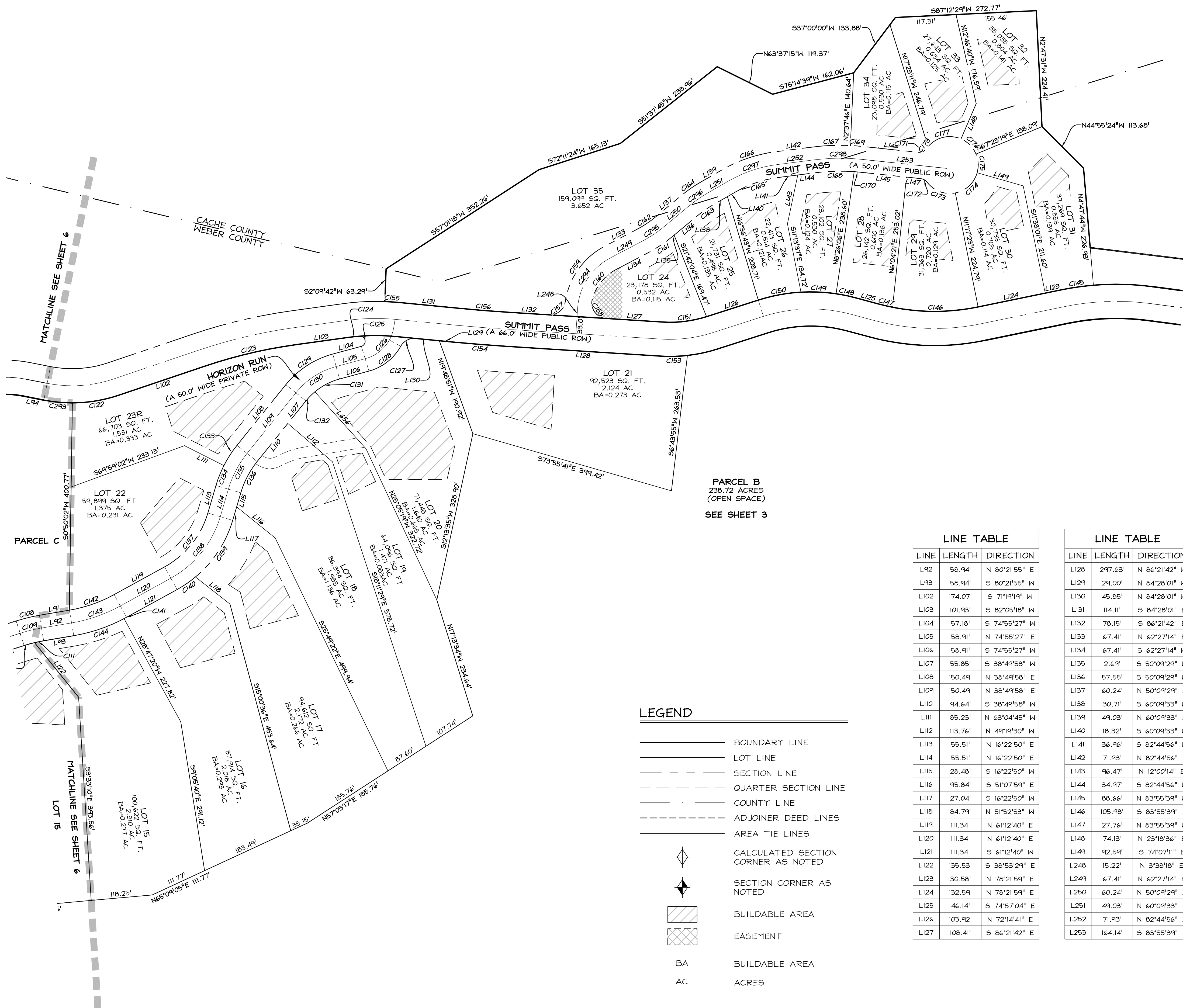
STATE OF UTAH, COUNTY OF WEBER, RECORDED AND FILED AT THE REQUEST OF: ENTRY NO:

DATE: TIME: BOOK: PAGE:

FEE \$ WEBER COUNTY RECORDER

SUMMIT AT POWDER MOUNTAIN PHASE I

LOCATED IN THE NORTHEAST QUARTER OF SECTION 12, T 7N, R 1E, SLBM, AND SECTION 7, THE SOUTH HALF OF SECTIONS 5 & 6, AND THE NORTH HALF OF SECTION 8, T 7N, R 2E, SLBM.

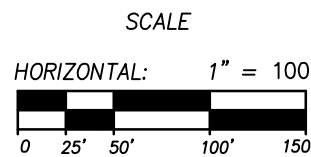
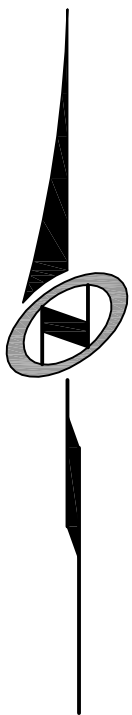


CURVE TABLE				
CURVE	LENGTH	RADIUS	LONG CHORD	LENGTH
C111	17.99'	275.00'	S 78°29'28" W	17.99'
C122	91.59'	283.00'	N 80°35'36" E	91.19'
C123	181.70'	967.00'	S 76°42'19" W	181.44'
C124	22.75'	393.15'	S 83°44'45" W	22.75'
C125	29.59'	10.00'	N 9°50'10" W	19.92'
C126	86.20'	75.00'	N 41°59'48" E	81.54'
C127	34.76'	30.00'	S 62°20'24" W	32.85'
C128	79.90'	100.00'	N 52°02'08" E	77.79'
C129	110.23'	175.00'	S 56°52'43" W	108.42'
C130	94.49'	150.00'	S 56°52'43" W	92.93'
C131	54.19'	125.00'	S 62°30'21" W	53.76'
C132	24.55'	125.00'	S 44°27'36" W	24.51'
C133	46.78'	225.00'	S 32°52'37" W	46.69'
C134	41.39'	225.00'	S 21°39'02" W	41.33'
C135	78.37'	200.00'	S 27°36'24" W	77.87'
C136	68.58'	175.00'	S 27°36'24" W	68.14'
C137	136.93'	175.00'	N 38°47'45" E	133.46'
C138	156.49'	200.00'	N 38°47'45" E	152.53'
C139	132.96'	225.00'	N 33°18'36" E	131.04'
C140	43.08'	225.00'	N 55°43'31" E	43.02'
C141	5.58'	325.00'	N 61°42'10" E	5.58'
C142	91.93'	275.00'	N 70°47'17" E	91.51'
C143	100.29'	300.00'	N 70°47'17" E	99.83'
C144	109.07'	325.00'	N 71°16'48" E	102.64'
C145	63.61'	533.00'	S 81°47'07" W	63.57'
C146	166.44'	417.00'	N 89°48'02" E	165.33'
C147	27.76'	417.00'	S 76°51'29" E	27.75'
C148	38.44'	333.00'	N 78°15'29" W	38.42'
C149	67.91'	333.00'	N 87°24'27" W	67.80'
C150	84.30'	333.00'	S 79°29'15" W	84.08'
C151	87.68'	234.82'	N 82°56'30" E	87.17'
C153	52.85'	300.82'	N 88°36'20" E	52.78'

CURVE TABLE				
CURVE	LENGTH	RADIUS	LONG CHORD	LENGTH
C154	101.09'	3056.76'	S 85°24'51" E	101.09'
C155	27.02'	459.15'	N 86°09'09" W	27.01'
C156	98.91'	2990.76'	S 85°24'51" E	98.90'
C157	44.59'	30.00'	N 51°03'40" E	40.60'
C158	54.01'	30.00'	S 34°47'21" E	47.00'
C159	136.58'	145.00'	S 35°28'08" W	131.59'
C160	75.72'	95.00'	S 39°37'07" W	73.74'
C161	59.02'	275.00'	N 56°18'22" E	58.90'
C162	48.29'	225.00'	N 56°18'22" E	48.19'
C163	39.27'	225.00'	S 55°09'31" W	39.22'
C164	48.00'	275.00'	S 55°09'31" W	47.94'
C165	88.71'	225.00'	S 71°27'14" W	88.14'
C166	108.42'	275.00'	S 71°27'14" W	107.72'
C167	73.29'	425.00'	S 87°41'21" W	73.20'
C168	74.35'	375.00'	S 88°25'44" W	74.23'
C169	25.54'	425.00'	N 85°38'57" W	25.53'
C170	12.85'	375.00'	N 84°54'34" W	12.85'
C171	19.01'	18.00'	N 65°48'35" E	18.14'
C172	14.67'	18.00'	N 60°35'11" W	14.26'
C173	61.48'	55.00'	S 69°16'03" E	58.33'
C174	60.31'	55.00'	N 47°17'43" E	57.34'
C175	36.95'	55.00'	N 3'21'56" W	36.26'
C176	42.31'	55.00'	N 44°39'02" W	41.28'
C177	70.00'	55.00'	S 76°50'57" W	65.37'
C178	4.65'	55.00'	S 37°58'04" W	4.65'
C293	55.57'	283.00'	S 84°30'36" E	55.48'
C294	123.18'	120.00'	S 33°02'46" W	117.85'
C295	53.65'	250.00'	N 56°18'22" E	53.55'
C296	43.64'	250.00'	S 55°09'31" W	43.58'
C297	98.57'	250.00'	S 71°27'14" W	97.93'
C298	93.02'	400.00'	S 89°24'38" W	92.81'

LINE TABLE		
LINE	LENGTH	DIRECTION
L92	58.94'	N 80°21'55" E
L93	58.94'	S 80°21'55" W
L102	174.07'	S 71°19'19" W
L103	101.93'	S 82°05'18" W
L104	57.18'	S 74°55'27" W
L105	58.91'	N 74°55'27" E
L106	58.91'	S 74°55'27" W
L107	55.85'	S 38°49'58" W
L108	150.49'	N 38°49'58" E
L109	150.49'	N 38°49'58" E
L110	94.64'	S 38°49'58" W
L111	85.23'	N 63°04'45" W
L112	113.76'	N 49°19'30" W
L113	55.51'	N 16°22'50" E
L114	55.51'	N 16°22'50" E
L115	28.48'	S 16°22'50" W
L116	95.84'	S 51°07'59" E
L117	27.04'	S 16°22'50" W
L118	84.79'	N 51°52'53" W
L119	111.34'	N 61°12'40" E
L120	111.34'	N 61°12'40" E
L121	111.34'	S 61°12'40" W
L122	135.53'	S 38°53'29" E
L123	30.58'	N 78°21'59" E
L124	132.59'	N 78°21'59" E
L125	46.14'	S 74°57'04" E
L126	103.92'	N 72°14'41" E
L127	108.41'	S 86°21'42" E

LINE TABLE		
LINE	LENGTH	DIRECTION
L128	297.63'	N 86°21'42" W
L129	29.00'	N 84°28'01" W
L130	45.85'	N 84°28'01" W
L131	114.11'	S 84°28'01" E
L132	78.15'	S 86°21'42" E
L133	67.41'	N 62°27'14" E
L134	67.41'	S 62°27'14" W
L135	2.69'	S 50°09'29" W
L136	57.55'	S 50°09'29" W
L137	60.24'	N 50°09'29" E
L138	30.71'	S 60°09'33" W
L139	49.03'	N 60°09'33" E
L140	18.32'	S 60°09'33" W
L141	36.96'	S 82°44'56" W
L142	71.93'	N 82°44'56" E
L143	96.47'	N 12°00'14" E
L144	34.97'	S 82°44'56" W
L145	88.66'	N 83°55'39" W
L146	105.98'	S 83°55'39" E
L147	27.76'	N 83°55'39" W
L148	74.13'	N 23°18'36" E
L149	92.59'	S 74°07'11" E
L248	15.22'	N 3°38'18" E
L249	67.41'	N 62°27'14" E
L250	60.24'	N 50°09'29" E
L251	49.03'	N 60°09'33" E
L252	71.93'	N 82°44'56" E
L253	164.14'	S 83°55'39" E



SUMMIT AT POWDER MOUNTAIN PHASE I

LOTS 15 TO 35

LOCATED IN THE NORTHEAST QUARTER OF SECTION 12, T 7N, R 1E, SLBM, AND SECTION 7, THE SOUTH HALF OF SECTIONS 5 & 6, AND THE NORTH HALF OF SECTION 8, T 7N, R 2E, SLBM.

Sheet 7 of 10

NV5

NOLTE VERTICALFIVE

5212 SOUTH STATE STREET, SUITE 300
801.743.1300 TEL. 801.743.0300 FAX

MURRAY, UT 84107
WWW.NOLTE.COM

RECORDED #

STATE OF UTAH, COUNTY OF WEBER, RECORDED AND FILED AT THE REQUEST OF: ENTRY NO:

DATE: TIME: BOOK: PAGE:

FEE \$

WEBER COUNTY RECORDER

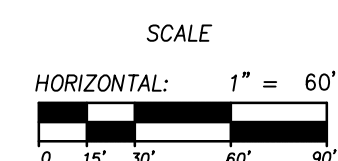
LOCATED IN THE NORTHEAST QUARTER OF SECTION 12, T 7N, R 1E, SLBM, AND SECTION 7, THE SOUTH HALF OF SECTIONS 5 & 6, AND THE NORTH HALF OF SECTION 8, T 7N, R 2E, SLBM.



CURVE TABLE				
CURVE	LENGTH	RADIUS	LONG CHORD	LENGTH
C179	99.60'	603.42'	S 17°33'08" E	99.48'
C180	154.37'	433.00'	S 11°56'30" E	158.47'
C181	34.89'	433.00'	S 40°04'10" E	34.88'
C182	54.44'	433.00'	S 45°58'44" E	54.41'
C183	127.67'	433.00'	S 58°01'45" E	127.21'
C184	115.24'	367.00'	N 57°28'49" W	114.77'
C185	88.08'	433.00'	S 54°18'44" E	87.93'
C186	120.43'	75.00'	N 35°19'21" W	107.90'
C187	58.96'	433.00'	S 64°02'26" E	58.91'
C188	58.92'	93.00'	S 15°22'27" E	57.94'
C189	120.43'	75.00'	N 35°19'21" W	107.90'
C192	77.54'	93.00'	S 57°25'25" E	75.36'
C237	63.60'	47.50'	S 49°56'56" W	58.96'
C238	90.35'	47.50'	S 42°54'09" E	77.33'

_____ BOUNDARY LINE
 _____ LOT LINE
 - - - - - SECTION LINE
 - - - - - QUARTER SECTION LINE
 _____ COUNTY LINE
 - - - - - ADJOINER DEED LINES
 _____ AREA TIE LINES

-



LOTS 36-44R, 76, & 77.

Sheet **8** of 10

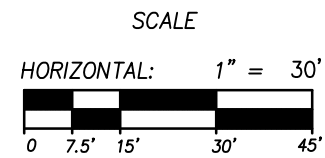
5217 SOUTH STATE STREET, SUITE 300
801.743.1300 TEL 801.743.0300 FAX

RECORDED #

DATE: _____ TIME: _____ BOOK: _____ PAGE: _____

FEE \$ _____ WEBER COUNTY RECORDER

BUILD AREA TABLE	
LOT #	AREA IN ACRES
45	0.091
46R	0.085
47	0.040
48	0.028
49	0.024
50	0.032
51	0.037
52	0.037
53	0.034
54	0.034
55	0.034
56	0.032
63	0.072
64	0.046
65	0.033
66	0.028
67	0.033
68	0.037
69	0.037
70	0.036
71	0.034
72	0.036
73	0.104
74	0.102
75	0.112
76	0.151
79	0.129
80	0.102
81	0.067
82	0.072
83	0.085
84	0.076
85	0.077
86	0.075



SUMMIT AT POWDER MOUNTAIN PHASE I

LOCATED IN THE NORTHEAST QUARTER OF SECTION 12, T 7N, R 1E, SLBM, AND SECTION 7, THE SOUTH HALF OF SECTIONS 5 & 6, AND THE NORTH HALF OF SECTION 8, T 7N, R 2E, SLBM.

SUMMIT PASS
(A 66.0' PUBLIC ROW)

PARCEL F
8,638 SQ. FT.
0.1981 AC
(OPEN SPACE)

COPPER CREST ROAD
(A 36.0' PRIVATE ROW)

SPRING PARK ROAD
(A 36.0' PUBLIC ROW)

EASEMENT

PARCEL J
71.79 ACRES
(OPEN SPACE)

PARCEL G
26,436 SQ. FT.
0.606 AC
(OPEN SPACE)

LINE TABLE		
LINE	LENGTH	DIRECTION
L159	93.74'	S 81°19'28" E
L160	93.74'	N 81°19'28" W
L162	36.62'	S 81°19'28" E
L163	64.70'	S 70°13'16" E
L164	64.70'	N 70°13'16" W
L165	32.06'	S 70°13'16" E
L166	32.64'	S 70°13'16" E
L167	32.71'	N 84°03'51" E
L168	138.80'	S 84°03'51" W
L169	40.00'	N 84°03'51" E
L170	40.00'	N 84°03'51" E
L171	26.04'	N 84°03'51" E
L186	59.72'	N 52°40'58" W
L187	27.89'	N 77°52'47" W
L188	37.37'	N 77°52'47" W
L189	60.00'	N 77°52'47" W
L190	19.14'	N 77°52'47" W
L191	33.20'	S 76°22'37" W
L192	36.54'	S 76°22'37" W
L193	47.52'	S 76°22'37" W
L194	5.04'	N 78°24'40" W
L195	5.04'	S 78°24'40" E
L196	117.26'	N 76°22'37" E
L197	46.57'	S 77°52'47" E
L198	61.71'	S 77°52'47" E
L199	36.12'	S 77°52'47" E
L200	1.68'	S 52°40'58" E
L201	58.04'	S 52°40'58" E
L240	160.34'	N 83°44'18" W
L243	31.05'	N 84°03'51" E
L244	9.02'	N 84°03'51" E
L245	37.44'	S 77°52'47" E
L246	30.21'	N 83°09'35" E

LEGEND

- BOUNDARY LINE
- LOT LINE
- COUNTY LINE
- ADJOINER DEED LINES
- BUILDABLE AREA
- EASEMENT
- BA
- AC

CURVE TABLE					CURVE TABLE					CURVE TABLE				
CURVE	LENGTH	RADIUS	LONG CHORD	LENGTH	CURVE	LENGTH	RADIUS	LONG CHORD	LENGTH	CURVE	LENGTH	RADIUS	LONG CHORD	LENGTH
C190	25.68'	18.00'	S 10°23'05" E	23.55'	C206	16.44'	107.00'	S 88°27'54" W	16.42'	C233	55.01'	232.00'	S 85°12'16" E	54.88'
C191	29.92'	57.00'	S 66°17'14" E	29.58'	C207	112.50'	143.00'	N 61°48'04" W	109.62'	C234	3.24'	23.00'	S 74°22'26" E	3.24'
C193	26.09'	382.00'	N 79°22'05" W	26.08'	C208	93.68'	107.00'	N 62°03'10" W	90.72'	C235	18.61'	23.00'	S 47°09'15" E	18.11'
C194	81.00'	418.00'	N 75°46'22" W	80.88'	C209	193.20'	125.00'	N 51°39'30" W	174.53'	C236	56.14'	47.50'	N 57°49'52" W	52.93'
C195	77.52'	400.00'	N 75°46'22" W	77.39'	C222	89.73'	102.00'	S 77°53'04" E	86.86'	C239	29.40'	47.50'	N 64°52'40" E	28.93'
C196	47.94'	382.00'	N 73°49'00" W	47.91'	C223	28.58'	268.00'	N 55°44'15" W	28.56'	C240	21.85'	23.00'	S 74°22'08" W	21.04'
C197	10.90'	482.00'	S 70°52'09" E	10.90'	C224	45.00'	268.00'	N 63°36'10" W	44.95'	C241	45.50'	268.00'	S 83°16'30" E	45.45'
C198	25.19'	518.00'	S 71°36'51" E	25.18'	C225	35.83'	268.00'	N 72°14'36" W	35.80'	C242	72.43'	268.00'	N 84°07'09" E	72.21'
C199	40.00'	518.00'	S 75°13'09" E	39.99'	C226	8.45'	268.00'	N 76°58'36" W	8.45'	C243	88.31'	232.00'	S 87°16'53" W	87.78'
C200	40.00'	518.00'	S 79°38'37" E	39.99'	C227	15.57'	268.00'	N 79°32'40" W	15.57'	C244	15.93'	232.00'	N 79°50'49" W	15.93'
C201	40.00'	518.00'	S 84°04'05" E	39.99'	C228	34.36'	268.00'	N 84°52'56" W	34.34'	C245	33.03'	232.00'	N 73°48'04" W	33.00'
C202	224.40'	500.00'	N 83°04'43" W	222.52'	C229	34.36'	268.00'	S 87°46'20" W	34.34'	C246	69.00'	232.00'	N 61°12'10" W	68.74'
C203	40.00'	518.00'	S 88°29'33" E	39.99'	C230	34.36'	268.00'	S 80°25'36" W	34.34'	C247	45.97'	138.00'	S 62°13'30" E	45.75'
C204	40.00'	518.00'	N 87°05'00" E	39.99'	C231	1.76'	268.00'	S 76°33'55" W	1.76'	C285	119.38'	433.00'	S 75°50'23" E	119.00'
C205	7.29'	518.00'	N 84°28'03" E	7.29'	C232	47.07'	232.00'	N 82°11'23" E	46.99'	C286	155.51'	217.00'	N 63°07'35" W	152.20'

SUMMIT AT POWDER MOUNTAIN PHASE I LOTS 45-56, 63-75, 78-86, & PARCELS E-J

LOCATED IN THE NORTHEAST QUARTER OF SECTION 12, T 7N, R 1E, SLBM, AND SECTION 7, THE SOUTH HALF OF SECTIONS 5 & 6, AND THE NORTH HALF OF SECTION 8, T 7N, R 2E, SLBM.

Sheet 9 of 10

NV5 **NOLTE VERTICALFIVE**
5217 SOUTH STATE STREET, SUITE 300
801.743.1300 TEL. 801.743.0300 FAX
MURRAY, UT 84107
WWW.NOLTE.COM

RECORDED #

STATE OF UTAH, COUNTY OF WEBER, RECORDED AND FILED AT THE
REQUEST OF: ENTRY NO:

DATE: TIME: BOOK: PAGE:

FEE \$ WEBER COUNTY RECORDER

SUMMIT AT POWDER MOUNTAIN PHASE I

LOCATED IN THE NORTHEAST QUARTER OF SECTION 12, T 7N, R 1E, SLBM, AND SECTION 7, THE SOUTH HALF OF SECTIONS 5 & 6, AND THE NORTH HALF OF SECTION 8, T 7N, R 2E, SLBM.

LINE TABLE		
LINE	LENGTH	DIRECTION
L172	15.48'	S 7°22'50" E
L173	11.11'	S 7°22'50" E
L174	18.00'	S 7°22'50" E
L175	22.00'	S 7°22'50" E
L176	40.00'	S 7°22'50" E
L177	102.39'	N 7°22'50" W
L178	24.00'	S 7°22'50" E
L179	32.00'	S 7°22'50" E
L180	16.00'	S 7°22'50" E
L181	24.00'	S 7°22'50" E
L182	14.92'	S 7°22'50" E
L183	12.54'	N 17°14'04" W
L184	16.86'	S 7°22'50" E
L185	34.38'	S 5°45'41" W
L207	37.40'	N 20°16'24" E
L208	6.23'	S 20°16'24" W
L209	18.00'	S 20°16'24" W
L210	18.00'	S 20°16'24" W
L211	18.00'	S 20°16'24" W
L212	36.00'	S 20°16'24" W
L213	36.04'	N 6°45'02" W
L214	13.00'	S 20°14'58" W
L215	18.00'	S 20°14'58" W
L216	18.00'	S 20°14'58" W
L217	18.00'	S 20°14'58" W
L218	11.64'	S 20°14'58" W
L219	11.80'	S 4°16'00" E
L220	20.00'	S 4°16'00" E
L221	18.00'	S 4°16'00" E
L222	11.81'	S 4°16'00" E
L223	17.88'	S 4°16'00" E
L224	24.00'	S 4°16'00" E
L225	24.00'	S 4°16'00" E
L226	16.00'	S 4°16'00" E
L227	16.00'	S 4°16'00" E
L228	17.72'	S 4°16'00" E
L229	5.27'	S 34°47'56" W
L230	1.63'	N 53°50'59" W
L231	14.71'	N 5°42'44" W
L232	16.01'	N 5°42'44" W
L233	16.01'	N 5°42'44" W
L234	24.01'	N 5°42'44" W
L235	16.65'	N 5°42'44" W
L241	36.00'	S 4°16'00" E
L242	18.00'	S 4°16'00" E

BUILD AREA TABLE	
LOT #	AREA IN ACRES
57	0.068
58	0.028
59	0.028
60	0.057
61	0.038
62	0.073
87	0.048
88	0.032
89	0.023
90	0.043
91	0.055
92	0.031
93	0.043
94	0.033
95	0.038
96	0.020
97	0.019
98	0.039

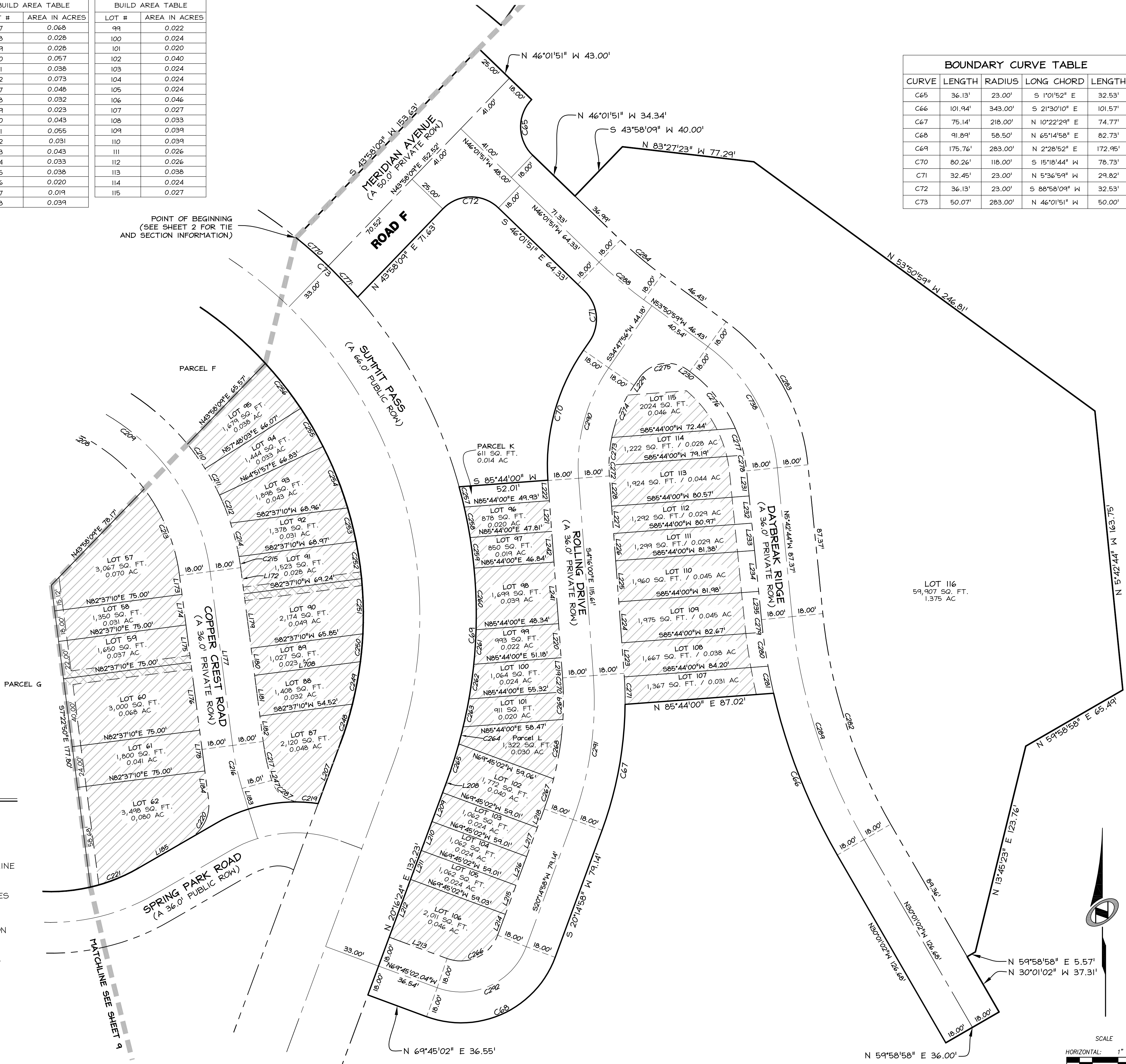
BUILD AREA TABLE	
LOT #	AREA IN ACRES
99	0.022
100	0.024
101	0.020
102	0.040
103	0.024
104	0.024
105	0.024
106	0.046
107	0.027
108	0.033
109	0.039
110	0.039
111	0.026
112	0.026
113	0.038
114	0.024
115	0.027

BOUNDARY CURVE TABLE				
CURVE	LENGTH	RADIUS	LONG CHORD	LENGTH
C65	36.13'	23.00'	S 1°01'52" E	32.53'
C66	101.94'	343.00'	S 21°30'10" E	101.57'
C67	75.14'	218.00'	N 10°22'29" E	74.77'
C68	91.89'	58.50'	N 65°14'58" E	82.73'
C69	175.76'	283.00'	N 2°28'52" E	172.95'
C70	80.26'	118.00'	S 15°18'44" W	78.73'
C71	32.45'	23.00'	N 5°36'59" W	29.82'
C72	36.13'	23.00'	S 88°58'09" W	32.53'
C73	50.07'	283.00'	N 46°01'51" W	50.00'

CURVE TABLE				
CURVE	LENGTH	RADIUS	LONG CHORD	LENGTH
C210	17.63'	143.00'	N 35°43'55" W	17.62'
C211	17.63'	143.00'	N 28°40'00" W	17.62'
C212	17.63'	143.00'	N 21°36'08" W	17.62'
C213	55.26'	107.00'	N 22°10'33" W	54.65'
C214	20.15'	143.00'	N 14°01'59" W	20.14'
C215	6.53'	143.00'	N 8°41'18" W	6.53'
C216	25.80'	150.00'	N 12°18'30" W	25.77'
C217	22.70'	132.00'	S 12°18'30" E	22.68'
C219	10.50'	93.00'	N 85°04'34" W	10.50'
C220	27.04'	23.00'	N 26°17'55" E	25.51'
C221	30.15'	102.00'	N 68°26'45" E	30.04'
C248	24.06'	217.00'	N 17°05'47" E	24.05'
C249	25.24'	217.00'	N 10°35'13" E	25.23'
C250	16.39'	217.00'	N 5°05'25" E	16.39'
C251	32.21'	217.00'	N 1°14'32" W	32.18'
C252	22.01'	217.00'	N 8°29'03" W	22.00'
C253	20.14'	217.00'	N 14°02'58" W	20.14'
C254	38.73'	217.00'	N 21°49'18" W	38.68'
C255	25.84'	217.00'	N 30°20'44" W	25.82'
C256	33.48'	217.00'	N 38°10'35" W	33.45'
C257	12.18'	283.00'	N 14°04'42" W	12.18'
C258	18.13'	283.00'	N 11°00'37" W	18.13'
C259	18.03'	283.00'	N 7°21'00" W	18.03'
C260	36.06'	283.00'	N 1°52'31" W	36.03'
C261	20.21'	283.00'	N 3°49'12" E	20.20'
C262	20.47'	283.00'	N 7°56'14" E	20.46'
C263	16.64'	283.00'	N 11°41'38" E	16.64'
C264	10.26'	283.00'	N 14°25'03" E	10.26'
C265	23.79'	283.00'	N 17°51'53" E	23.79'
C266	36.13'	23.00'	N 65°14'58" E	32.53'
C267	18.40'	182.00'	N 17°21'14" E	18.39'
C268	35.21'	182.00'	N 8°54'59" E	35.15'
C269	16.07'	182.00'	N 0°50'43" E	16.06'
C270	8.20'	182.00'	N 2°58'31" W	8.20'
C271	16.02'	218.00'	N 1°36'19" W	16.02'
C272	6.28'	82.00'	S 2°04'20" E	6.28'
C273	16.28'	82.00'	S 5°48'32" W	16.25'
C274	33.35'	82.00'	S 23°08'50" W	33.12'
C275	31.89'	20.00'	S 80°28'29" W	28.62'
C276	43.06'	82.00'	N 38°48'24" W	42.57'
C277	16.50'	82.00'	N 17°59'59" W	16.47'
C278	9.34'	82.00'	N 8°58'26" W	9.33'
C279	7.36'	343.00'	S 61°19'38" E	7.36'
C280	20.06'	343.00'	S 8°37'04" E	20.06'
C281	16.13'	343.00'	S 1°38'27" E	16.13'
C282	130.23'	307.00'	S 17°51'53" E	129.26'
C283	99.14'	118.00'	N 29°46'51" W	96.25'
C284	31.66'	232.00'	S 49°56'25" E	31.63'
C287	22.33'	18.00'	S 52°46'24" E	20.92'

LEGEND

- BOUNDARY LINE
- LOT LINE
- SECTION LINE
- QUARTER SECTION LINE
- COUNTY LINE
- ADJOINER DEED LINES
- AREA TIE LINES
- CALCULATED SECTION CORNER AS NOTED
- SECTION CORNER AS NOTED
- BUILDABLE AREA
- EASEMENT
- BA BUILDABLE AREA
- AC ACRES



SUMMIT AT POWDER MOUNTAIN PHASE I

AREA 4 BOUNDARY, LOTS 57-62, 87-116 AND PARCEL J

LOCATED IN THE NORTHEAST QUARTER OF SECTION 12, T 7N, R 1E, SLBM, AND SECTION 7, THE SOUTH HALF OF SECTIONS 5 & 6, AND THE NORTH HALF OF SECTION 8, T 7N, R 2E, SLBM.

Sheet 10 of 10

NV5

NOLTE VERTICALFIVE

5213 SOUTH STATE STREET, SUITE 300
801.743.1300 TEL 801.743.0300 FAX

MURRAY, UT 84107
WWW.NOLTE.COM

RECORDED

STATE OF UTAH, COUNTY OF WEBER, RECORDED AND FILED AT THE REQUEST OF: ENTRY NO:

DATE: TIME: BOOK: PAGE:

FEE \$

WEBER COUNTY RECORDER