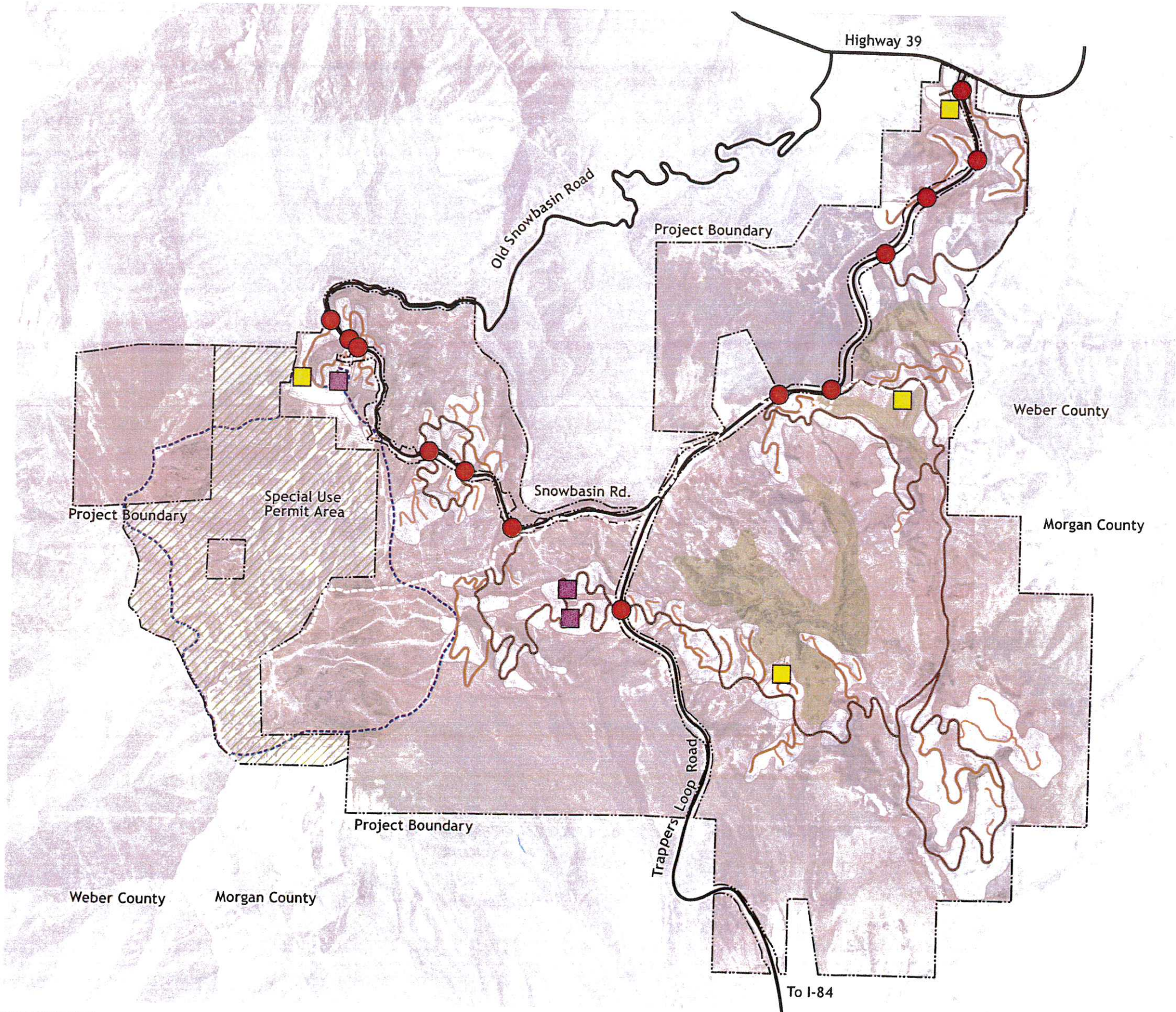


ROAD SYSTEM AND APPROXIMATE PARKING LOCATIONS

The Road System diagram illustrates the hierarchy of proposed roads within Snowbasin.

The rural major collector roads provide the primary structure for the development areas. These are the main access points from Trappers Loop Road and Snowbasin Road. Standard residential / rural local roads are utilized in lower density areas that may also be a primary access point but are secondary to the major collector. The minor / rural minor roads are used primarily in cul-de-sac conditions or when accessing small development pods.

Structured parking is currently planned in Area A - Earl's Village to support base-mountain requirements. Additionally, surface parking lots are tentatively planned in Area A and in Area G - The Ranch.



- Snowbasin Project Boundary
- Snowbasin Ski Area Boundary
- USFS Special Use Permit Area
- Existing Roads
- Collector/Rural Major Collector Roads
- Standard Residential/Rural Local Roads
- Minor (Private)/Rural Minor Roads
- Access from existing road
- Surface Parking
- Structure Parking

Drawing not to scale