

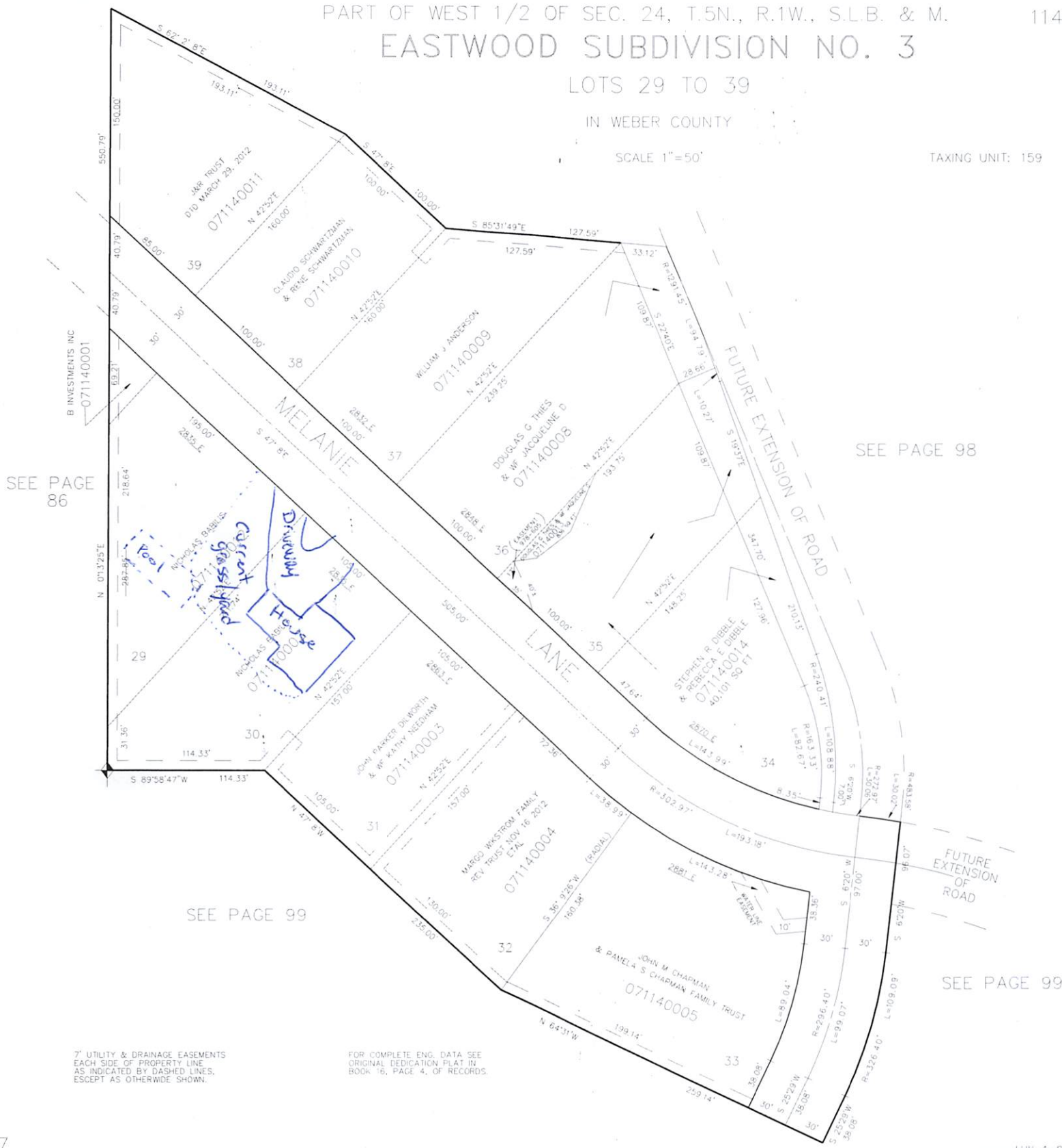
PART OF WEST 1/2 OF SEC. 24, T.5N., R.1W., S.L.B. & M.
EASTWOOD SUBDIVISION NO. 3

LOTS 29 TO 39

IN WEBER COUNTY

SCALE 1"=50'

TAXING UNIT: 159



SEE PAGE 86

SEE PAGE 98

SEE PAGE 99

SEE PAGE 99

7' UTILITY & DRAINAGE EASEMENTS
 EACH SIDE OF PROPERTY LINE
 AS INDICATED BY DASHED LINES,
 EXCEPT AS OTHERWISE SHOWN.

FOR COMPLETE ENG. DATA SEE
 ORIGINAL DEDICATION PLAT IN
 BOOK 16, PAGE 4, OF RECORDS.