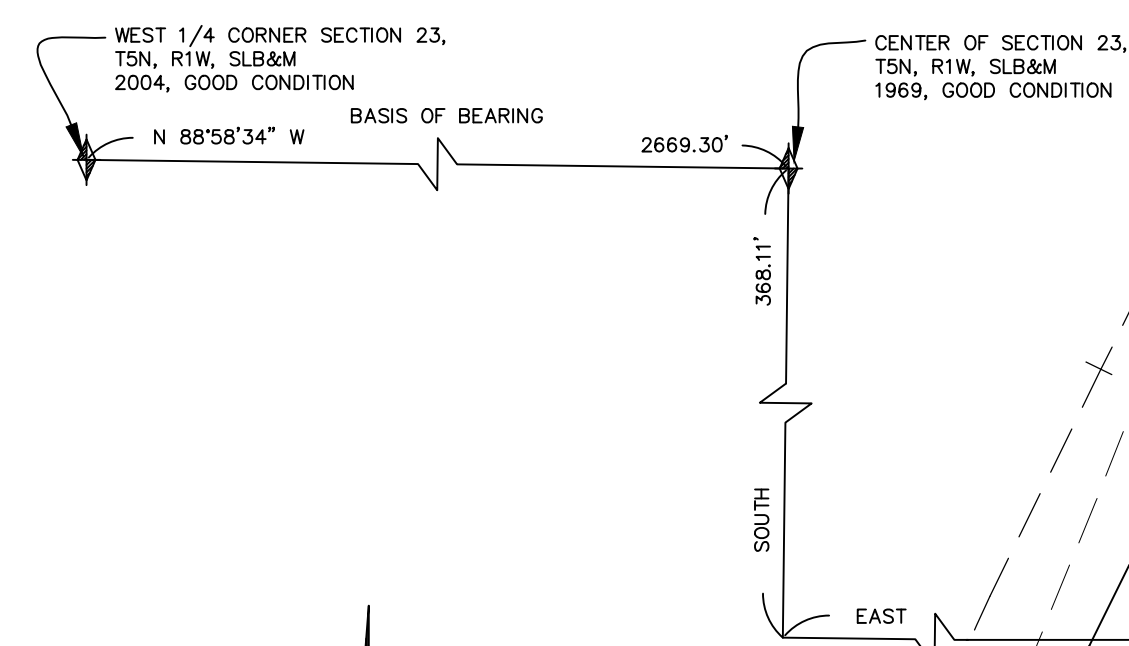
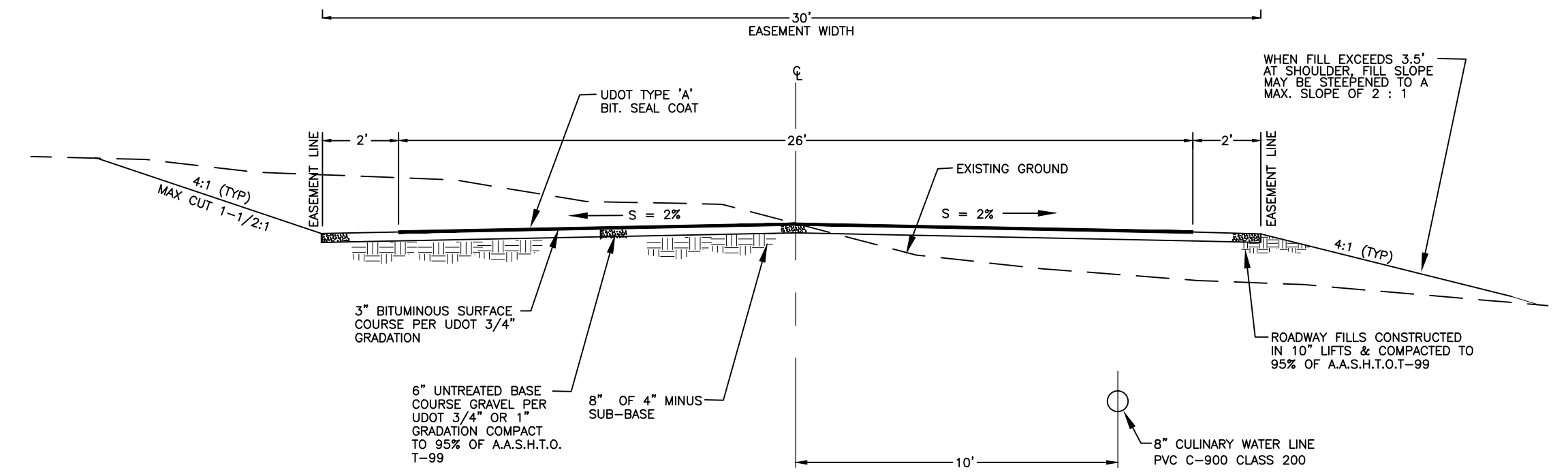


PAS DE CALAIS SUBDIVISION
A PART OF THE S.W. 1/4 OF SEC. 24, T.5N., R.1W., S.L.B.&M.
WEBER COUNTY, UTAH
IMPROVEMENT PLANS



SCALE: 1" = 50'


○ = 5/8" x 24" REBAR WITH
CAP STAMPED 167594
P.U.E. = PUBLIC UTILITY EASEMENT
() = RECORD



NOTE :
THESE PAVEMENT THICKNESSES
SHALL BE CONSIDERED AS MINIMUMS
AND MAY BE INCREASED BY THE COUNTY
ENGINEER WHEN SUBGRADE C.B.R. IS
LESS THAN 10 OR WHEN A GREATER
DEPTH IS NECESSARY TO PROVIDE
SUFFICIENT STABILITY. DESIGNER MAY
SUBMIT AN ALTERNATIVE PAVEMENT DESIGN
BASED ON A DETAILED SOILS ANALYSIS FOR
APPROVAL BY THE COUNTY ENGINEER.

ACCESS DRIVE SECTION
NOT TO SCALE

D=39°42'15"
R=182.73
L=126.63
LC=124.11
S 30°58'00" E

 LANDMARK SURVEYING, INC. A COMPLETE LAND SURVEYING SERVICE 4646 S. 3500 W. #A-3, WEST HAVEN, UTAH 84401 PHONE 801-731-4075 FAX 801-731-8506		WEBER COUNTY RECORDER ENTRY # _____ FEE _____ FILED FOR RECORD & RECORDED THIS ____ DAY OF _____ 20____ AT _____ IN BOOK _____ OF _____ PAGE _____ _____ WEBER COUNTY RECORDER BY _____ DEPUTY	
CLIENT: MATT RASMUSSEN			
LOCATION: PART OF THE S.W. 1/4 OF SEC. 24, T.5N., R.1W., S.L.B.&M.			
SURVEYED: JUNE 2013			
REVISIONS:	DRAWN BY: T.K.		
	CHECKED BY: D.B.		
	DATE: 1/6/2014		
	FILE: 3236-PAS DE CALAIS		