

150600117  
1.56 AC.

Dean O Burch  
& Elaine Burch Trustees

1400 S. 2900 W.

1354

1388

1420

1440

1540

400 S ST

2600 W ST

Source: Esri, Maxar, GeoEye, Earthstar Geographics, CNES/Airbus DS, USDA, USGS, AeroGRID, IGN, and the GIS User Community, Esri, HERE, Garmin, (c) OpenStreetMap contributor

S.E. 1/4  
SECTION 22, T.6N., R.2W., S.L.B. & M.

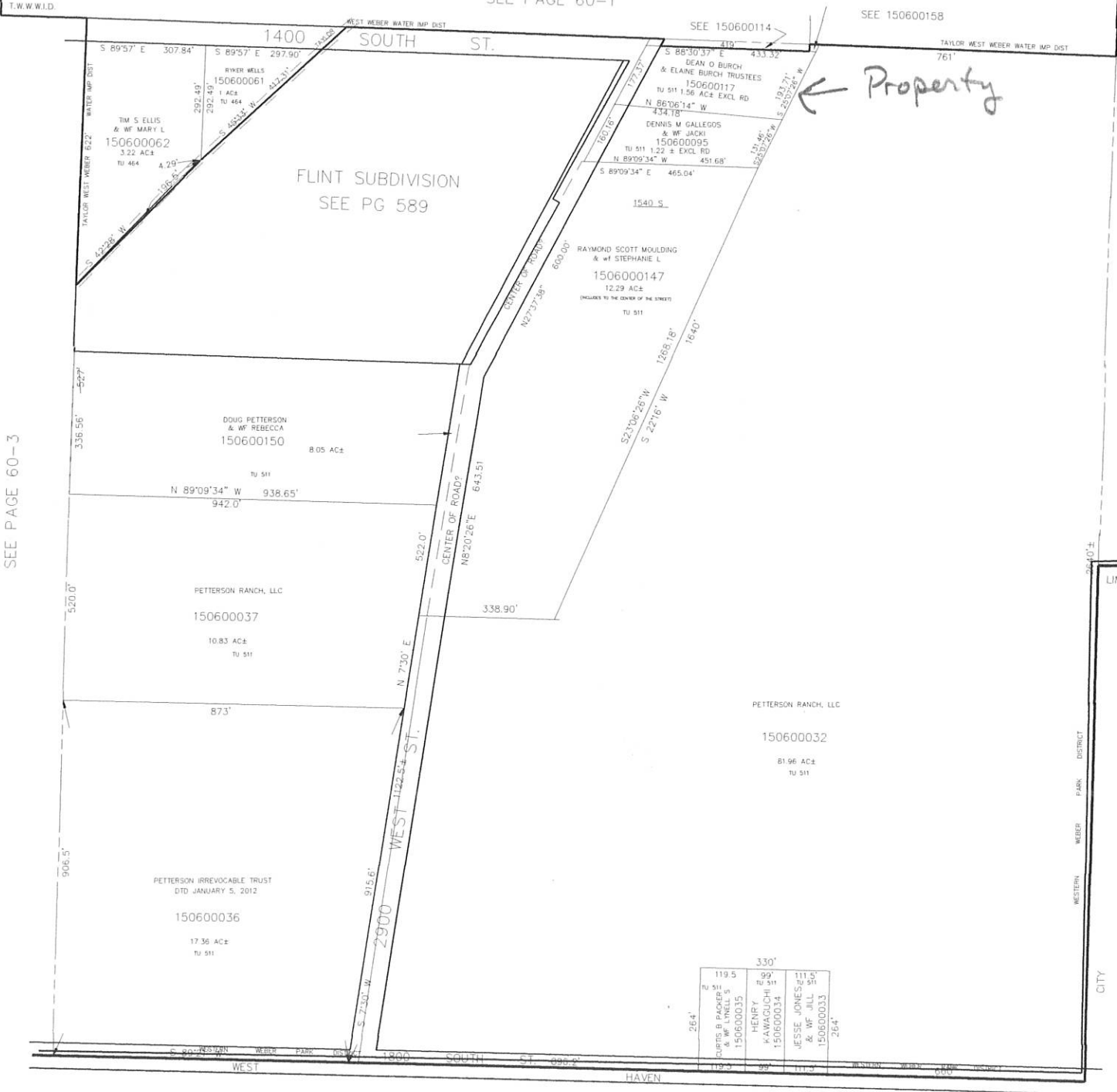
60-2

TAXING UNIT: 464,511

IN WEBER COUNTY

SCALE 1" = 200'

SEE PAGE 60-1



SEE PAGE 60-3

SEE PAGE 61-3

SEE PAGE 76-1

\*ADDRESS AFFIDAVIT E#2853889

\*FOR TAX PURPOSES ONLY\*

JCF 2-92