

Kirkman Building Exterior Lighting Plan

4267 N 3150 E Liberty, UT 84310

Roof Top Cupolas are 36" wide x 36" long x 29" Tall. With glass on all 4 sides. Proposed to install a recessed 5 or 6 inch LED warm light fixture inside the top of the cupola. Example of an identical cupola and light on a sister building attached for reference.

Proposing the east elevation to have 7 Wall Lanterns. Sized 9" Wide x 11" High x 12" Deep. Elevation plan marked with WL of the locations. The northern most light to be installed above the man door under the awning.

Proposing the west elevation to have 4 Wall Lanterns. Sized 9" Wide x 11" High x 12" Deep. Elevation plan marked with WL of the locations

Proposing the north elevation to have 3 Wall Lanterns. Sized 9" Wide x 11" High x 12" Deep. Elevation plan marked with WL of the locations. The east end of the north elevation there is a man door. The wall lantern (WL) proposed to be over the door under the awning.

Proposing the south elevation to have 1 Wall Lanterns. Sized 9" Wide x 11" High x 12" Deep. Elevation plan marked with WL of the location

Proposing under all the eaves and awnings of the building at 10' intervals to have 5 or 6 inch LED warm light fixtures.

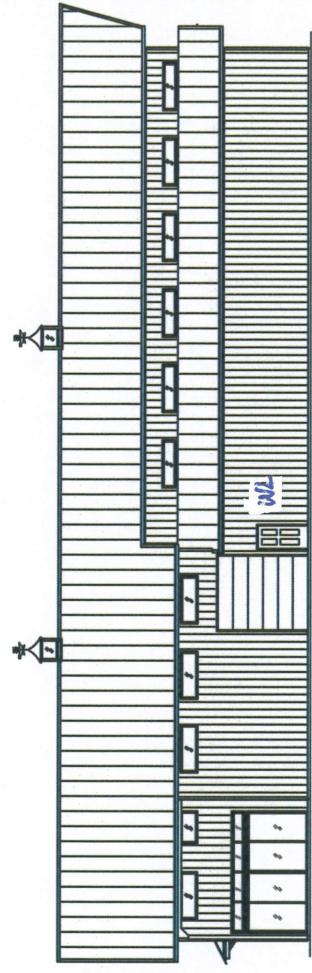


ENGINEER STAMP

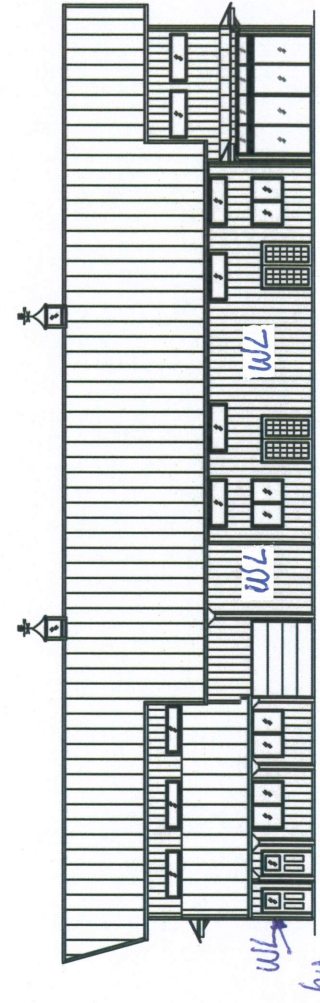
ELEVATIONS

BOB KIRKMAN BUILDING
LIBERTY, UTAH

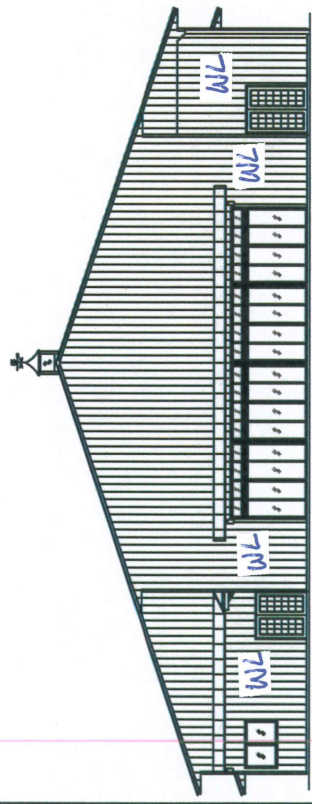
PROJECT B174
SCALE 1/4" = 1'-0"
DATE 03/16/2021
SHEET 09



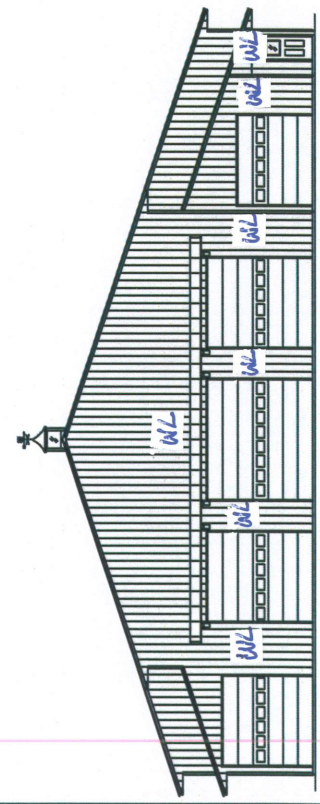
SIDE ELEVATION - SOUTH



SIDE ELEVATION - NORTH



GABLE END ELEVATION - WEST



GABLE END ELEVATION - EAST

WETHERBY — MEDIUM EXTERIOR
WALL LANTERN

1005 027 913

WETHERBY — MEDIUM EXTERIOR
WALL LANTERN
BLACK FINISH

Suitable for Uncovered Porches and Patios
9 in W x 11 in H x 12 in D (assembled dimensions)



USES STANDARD BULB
UP TO 60 W
CFL OR LED EQUIVALENT
BULB NOT INCLUDED



WET LOCATION

HAMPTON BAY®



1005 027 913
WETHERBY — MEDIUM EXTERIOR
WALL LANTERN
BLACK FINISH

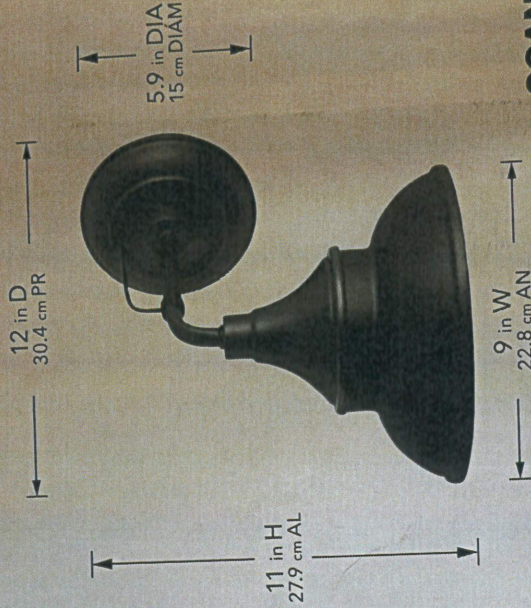
1005 027 913

**WETHERBY — MEDIUM EXTERIOR
WALL LANTERN
BLACK FINISH**

Suitable for Uncovered Porches and Patios
9 in W x 11 in H x 12 in D (assembled dimensions)

2 YEAR
WARRANTY

Assembled Dimensions
9 in W x 11 in H x 12 in D
Dimensiones del producto ensamblado
22.8 cm AN x 27.9 cm AL x 30.4 cm PR



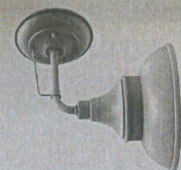
SCAN ME

with The Home Depot App
for more product information.
ESCANÉAME con The Home Depot App
para obtener más información
acerca del producto.

MODEL/MODELO: EW101398K



MADE IN CHINA
HECHO EN CHINA
DISTRIBUTED BY:
DISTRIBUIDO POR:
HOME DEPOT
2455 PACES FERRY ROAD
ATLANTA, GA 30339
FOR ASSISTANCE, CALL:
SI NECESITA AYUDA, LLÁME AL:
1-855-HO-HAMPTON
HAMPPTONBAY.COM



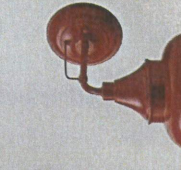
**WHITE FINISH
302598259**



**GREEN FINISH
302598248**



**BRONZE FINISH
305436439**



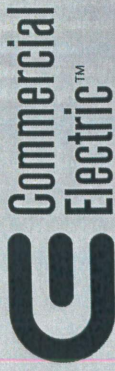
**RED FINISH
1002 664 820**



**GALVANIZED FINISH
1002 664 793**

OTHER FINISHES AVAILABLE
IN STORES OR ONLINE
AT HOMEDEPOT.COM

Commercial



1002 936 217

4 Pack - 5 & 6 in LED Color Changing Recessed Trim

- 50,000 Hours of Rated Life[†]
- 65 Watt Bulb Replacement
- Standard Retrofit Downlight
- Metal Construction



Adjust Color of Light with Integrated Switch

INTEGRATED LED TECHNOLOGY
Maintenance-Free, Light Shines Brighter** & Lasts Up To 34 Years**
NO BULBS REQUIRED



- WARM WHITE (2700K)
- SOFT WHITE (3000K)
- NEUTRAL WHITE (3500K)
- BRIGHT WHITE (4000K)
- DAYLIGHT (5000K)

Brightness 700 lumens
Estimated Energy Cost \$1.44* per year



4PK - 5&6 IN RECESSED LED TRIM CCT

\$34.97 pk

THAT'S ONLY **\$8.75** ea

1002-936-217

NSI LEAD
SOLE BAY PK 4
457 002

1 92968 50036 1



