

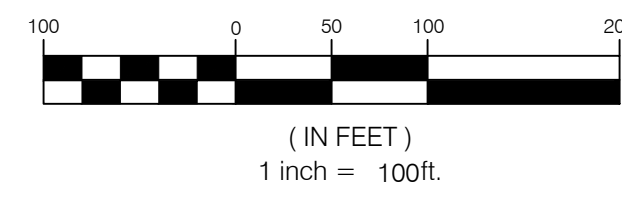
LEGEND

- WEBER COUNTY SECTION CORNER
LOT CORNER (SET 1/4 REBAR AND CAP)
BOUNDARY CORNER (SET 1/4 REBAR AND CAP)
P.U.E. PUBLIC UTILITY EASEMENT
STREET MON. (TO BE CONST.)
SECTION LINE
BOUNDARY LINE
LOT LINE
STREET CENTERLINE
EASEMENT LINE
RIGHT OF WAY LINE

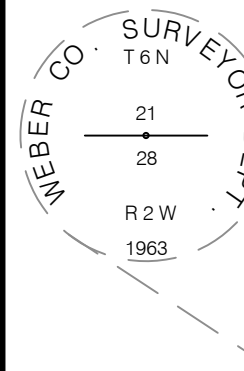
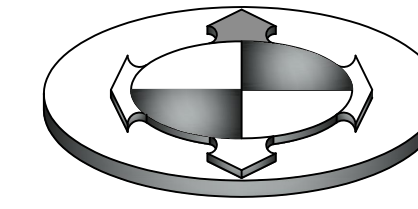
WINSTON PARK SUBDIVISION

LOCATED IN THE NORTHEAST QUARTER OF SECTION 28, TOWNSHIP 6 NORTH NORTH, RANGE 2 WEST, SALT LAKE BASE AND MERIDIAN WEBER COUNTY, UTAH 2021

GRAPHIC SCALE



NORTH



NORTH QUARTER CORNER OF SECTION 28, TOWNSHIP 6 NORTH, RANGE 2 WEST (FOUND 3" BRASS CAP MONUMENT SET IN CONCRETE FLUSH WITH ROAD SURFACE. MONUMENT SET IN 1963 BY WEBER COUNTY SURVEYOR DEPARTMENT. GOOD CONDITION)

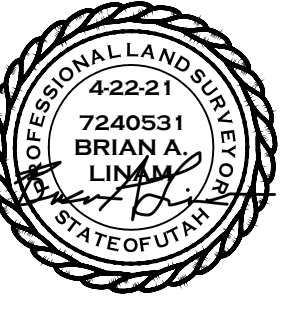
RAY L. BERTOLDI, TR PARCEL No. 15-057-0006

JEFFERY & TRUDY EAST PARCEL No. 15-057-0007

JEFFERY & TRUDY EAST PARCEL No. 15-057-0004

WEBER COUNTY BENCHMARK 62121-2-5217 SURVEY BENCHMARK ELEVATION NGVD 88 = 4241.87 (FOUND 3" BRASS CAP SET IN 6" CONCRETE POST. SET IN 1954 BY BUREAU OF RECLAMATION. GOOD CONDITION)

NORTHEAST CORNER OF SECTION 28, TOWNSHIP 6 NORTH, RANGE 2 WEST (FOUND 3" BRASS CAP MONUMENT SET IN CONCRETE 2" BELOW ROAD SURFACE. MONUMENT SET IN 1963 BY WEBER COUNTY SURVEYOR DEPARTMENT. GOOD CONDITION)



1800 SOUTH ST. (PUBLIC ROAD)

S 89°15'08" E 1830.36'

BASIS OF BEARINGS N 89°15'08" W 2643.62' (MEASURED) 2643.46' (RECORD) STATE PLANE GRID BEARING = N 89°15'02" W

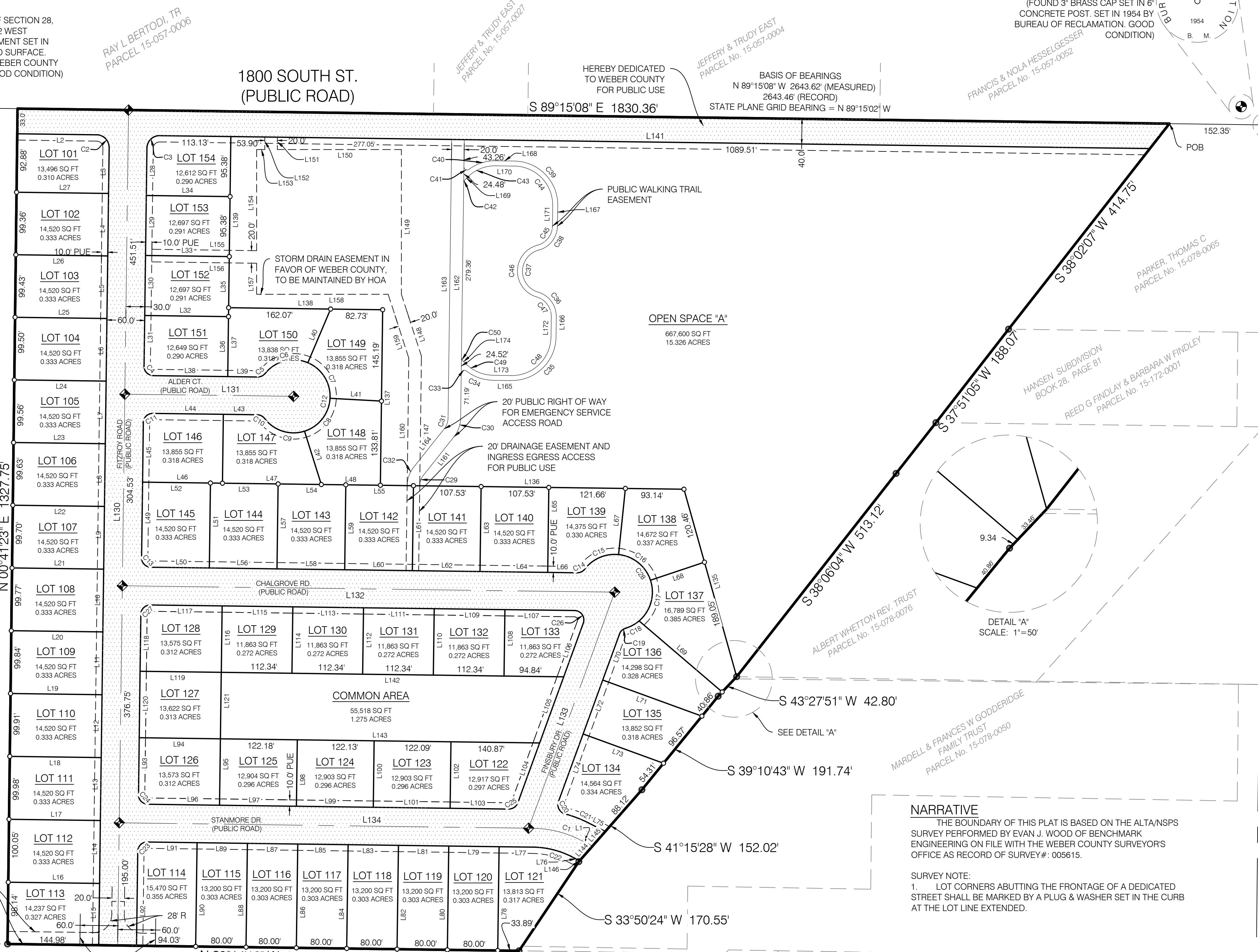
FRANCIS & NOLA FESSELGESSER PARCEL No. 15-057-0052

3500 WEST (PUBLIC ROAD)

S 00°37'00" W 2656.60' (MEASURED) 2656.57' (RECORD)

NOTES: 1. FOR LOT ADDRESSES SEE PAGE 2

2. AGRICULTURE IS THE PREFERRED USE IN THE AGRICULTURAL ZONES. AGRICULTURAL OPERATIONS AS SPECIFIED IN THE LAND USE CODE FOR A PARTICULAR ZONE ARE PERMITTED AT ANY TIME INCLUDING THE OPERATION OF FARM MACHINERY AND NO ALLOWED AGRICULTURAL USE SHALL BE SUBJECT TO RESTRICTIONS ON THE BASIS THAT IT INTERFERES WITH ACTIVITIES OF FUTURE RESIDENTS OF THIS SUBDIVISION."



NARRATIVE

THE BOUNDARY OF THIS PLAT IS BASED ON THE ALTA/NSPS SURVEY PERFORMED BY EVAN J. WOOD OF BENCHMARK ENGINEERING ON FILE WITH THE WEBER COUNTY SURVEYORS OFFICE AS RECORD OF SURVEY#: 005615.

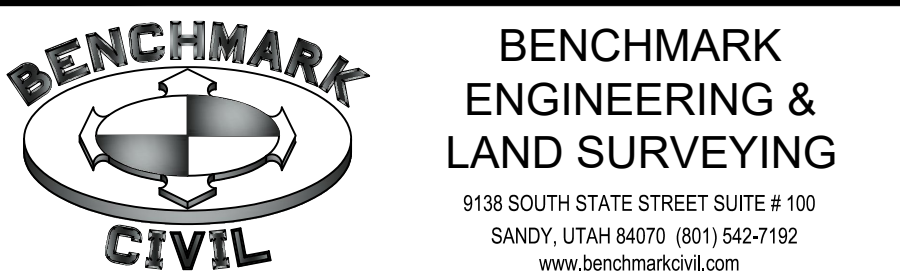
SURVEY NOTE:

1. LOT CORNERS ABUTTING THE FRONTAGE OF A DEDICATED STREET SHALL BE MARKED BY A PLUG & WASHER SET IN THE CURB AT THE LOT LINE EXTENDED.

EAST QUARTER CORNER OF SECTION 28, TOWNSHIP 6 NORTH, RANGE 2 WEST (FOUND 3" BRASS CAP MONUMENT SET IN CONCRETE 1" BELOW ROAD SURFACE. MONUMENT SET IN 1963 BY WEBER COUNTY SURVEYOR DEPARTMENT. GOOD CONDITION)

NOTE: PER GEOTECHNICAL REPORT, THE WATER TABLE VARIES FROM 4 1/2' TO 7' BELOW EXISTING GRADE. IT IS RECOMMENDED THAT THE LOWEST HABITABLE ELEVATION SHOULD BE 9' ABOVE THE OBSERVED WATER TABLE ELEVATION

OWNER / DEVELOPER: NAME: IGOR MAKSYMIW TELEPHONE: (801) 209-6759 IGORMAKSYMIW@AOL.COM



WEBER COUNTY SURVEYOR I HEREBY CERTIFY THAT THE WEBER COUNTY SURVEYORS OFFICE HAS REVIEWED THIS PLAT AND ALL CONDITIONS FOR APPROVAL BY THIS OFFICE HAVE BEEN SATISFIED...

WEBER COUNTY PLANNING COMMISSION ACCEPTANCE THIS IS TO CERTIFY THAT THIS SUBDIVISION PLAT WAS DULY APPROVED BY THE WEBER COUNTY, PLANNING COMMISSION ON THE DAY OF 2021

WEBER COUNTY ENGINEER I HEREBY CERTIFY THAT THE REQUIRED PUBLIC IMPROVEMENT STANDARDS AND DRAWINGS FOR THIS SUBDIVISION CONFORM WITH THE COUNTY STANDARDS...

WEBER COUNTY COMMISSION ACCEPTANCE THIS IS TO CERTIFY THAT THIS SUBDIVISION PLAT, THE DEDICATION OF STREETS AND OTHER OTHER PUBLIC WORKS AND FINANCIAL GUARANTEE OF PUBLIC IMPROVEMENTS ASSOCIATED WITH THIS SUBDIVISION...

WEBER COUNTY ATTORNEY I HAVE EXAMINED THE FINANCIAL GUARANTEE AND OTHER DOCUMENTS ASSOCIATED WITH THIS SUBDIVISION PLAT AND IN MY OPINION THEY CONFORM WITH THE COUNTY ORDINANCE APPLICABLE THERETO AND NOW IN FORCE AND AFFECT.

WEBER COUNTY RECORDER ENTRY NO. FEE PAID. FILED FOR RECORD AND RECORDED AT BOOK OF OFFICIAL RECORDS. PAGE RECORDED FOR: WEBER COUNTY RECORDER DEPUTY

SURVEYOR'S CERTIFICATE

I, BRIAN A. LINAM DO HEREBY CERTIFY THAT I AM A LICENSED PROFESSIONAL LAND SURVEYOR, IN THE STATE OF UTAH IN ACCORDANCE WITH TITLE 58, CHAPTER 22, PROFESSIONAL ENGINEERS AND LAND SURVEYORS ACT...

WINSTON PARK SUBDIVISION

BOUNDARY DESCRIPTION

BEGINNING AT A POINT ON THE EXISTING FENCE LINE EXTENDED DEFINED AS THE WESTERLY BANK OF A SLOUGH, SAID POINT BEING NORTH 89°15'08" WEST ALONG THE QUARTER SECTION LINE 152.35 FEET FROM THE NORTHEAST CORNER OF SECTION 28, TOWNSHIP 6 NORTH, RANGE 2 WEST, SALT LAKE BASE AND MERIDIAN AND RUNNING THENCE ALONG SAID EXISTING FENCE AND WESTERLY BANK OF SAID SLOUGH THE FOLLOWING SEVEN (7) COURSES:

CONTAINS 40.259 ACRES 54 RESIDENTIAL LOTS & 2 OPEN SPACES

OWNERS DEDICATION

WE THE UNDERSIGNED OWNERS OF THE HEREIN DESCRIBED TRACT OF LAND, DO HEREBY SET APART AND SUBDIVIDE THE SAME INTO LOTS AND STREETS AS SHOWN ON THE PLAT AND NAME SAID TRACT, WINSTON PARK SUBDIVISION, AND DO HEREBY DEDICATE, FOR PERPETUAL USE OF THE PUBLIC ALL PARCELS OF LAND, TRAILS AND ROADS INTENDED FOR PUBLIC USE...

AND DO ALSO GRANT AND CONVEY TO THE SUBDIVISION LOT OWNERS ASSOCIATION, ALL THOSE PARTS OR PORTIONS OF SAID TRACT OF LAND DESIGNATED AS COMMON AREAS TO BE USED FOR RECREATIONAL AND OPEN SPACE PURPOSES FOR THE BENEFIT OF EACH LOT OWNERS ASSOCIATION MEMBER IN COMMON WITH ALL OTHERS IN THE SUBDIVISION AND GRANT AND DEDICATE TO THE COUNTY A PERPETUAL OPEN SPACE RIGHT AND EASEMENT ON AND OVER THE COMMON AREAS TO GUARANTEE TO WEBER COUNTY THAT THE COMMON AREAS REMAIN OPEN AND UNDEVELOPED EXCEPT FOR APPROVED RECREATIONAL, PARKING AND OPEN SPACE PURPOSES.

SIGNED THIS DAY OF 2021

WINSTON PARK SUBDIVISION

ACKNOWLEDGMENT

State of County of } S.S.

ON THE DAY OF 20 PERSONALLY APPEARED BEFORE ME, THE UNDERSIGNED NOTARY PUBLIC, WADE RUMSEY, OF THE ABOVE OWNERS DEDICATION AND CERTIFICATION, WHO BEING BY ME DULY SWORN, DID ACKNOWLEDGE TO ME THAT HE SIGNED IT FREELY, VOLUNTARILY, AND FOR THE PURPOSES THEREIN MENTIONED.

MY COMMISSION NUMBER: NOTARY PUBLIC (PRINT NAME)

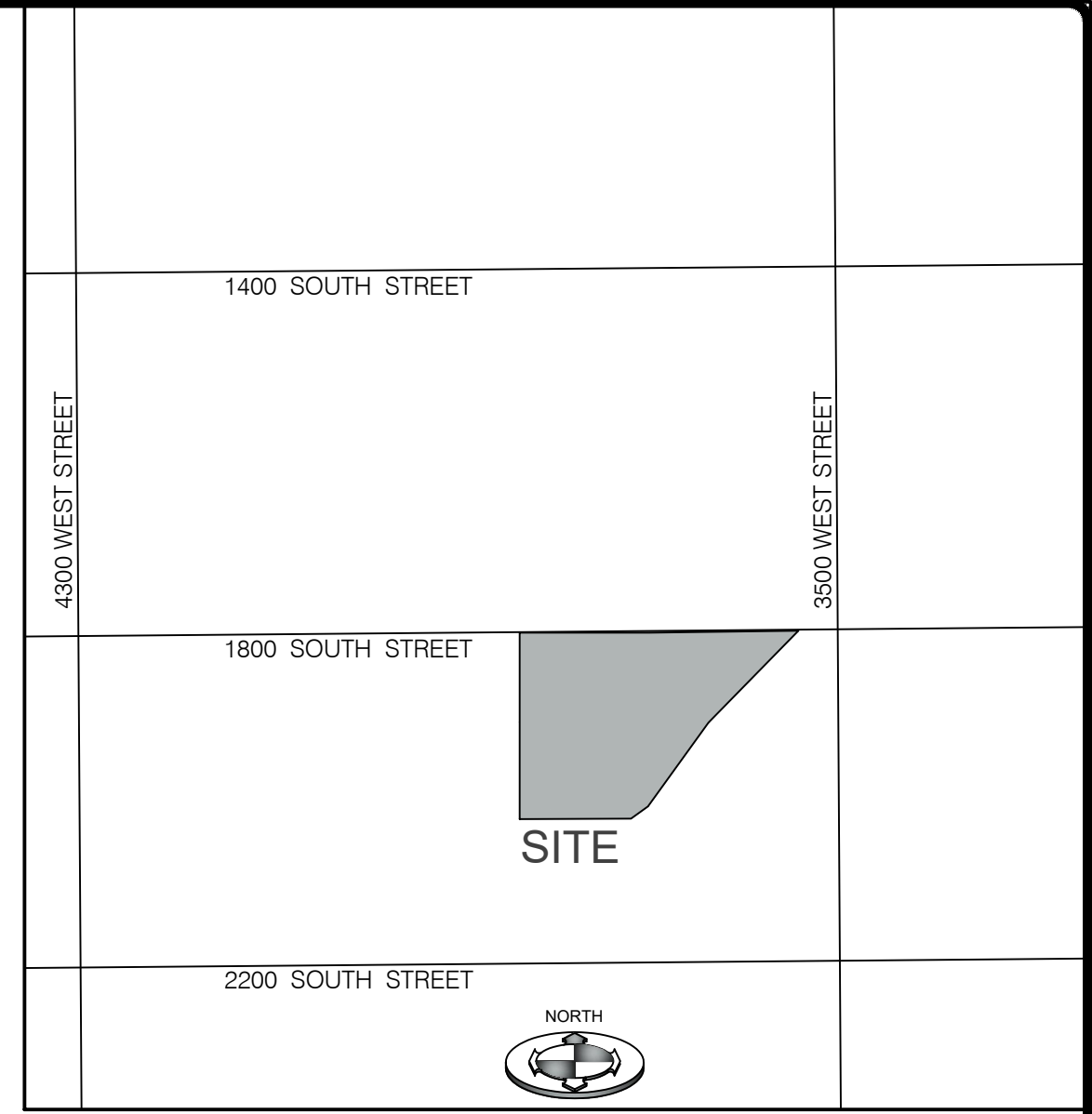
MY COMMISSION EXPIRES: NOTARY PUBLIC RESIDING IN COUNTY

WINSTON PARK SUBDIVISION

LOCATED IN THE NORTHEAST QUARTER OF SECTION 28, TOWNSHIP 6 NORTH NORTH, RANGE 2 WEST, SALT LAKE BASE AND MERIDIAN WEBER COUNTY, UTAH MARCH, 2021

WINSTON PARK SUBDIVISION

LOCATED IN THE NORTHEAST QUARTER OF SECTION 28,
TOWNSHIP 6 NORTH NORTH, RANGE 2 WEST,
SALT LAKE BASE AND MERIDIAN
WEBER COUNTY, UTAH
2021



VICINITY MAP
SCALE: N.T.S.

| CURVE TABLE | | | | | |
|-------------|--------|--------|------------|---------------|----------------|
| CURVE # | LENGTH | RADIUS | DELTA | CHORD BEARING | CHORD DISTANCE |
| C1 | 77.39 | 170.00 | 26°04'54" | N 76°11'45" W | 76.72' |
| C2 | 31.42 | 20.00 | 90°00'00" | N 44°15'08" W | 28.28' |
| C3 | 31.42 | 20.00 | 90°00'00" | S 45°44'52" W | 28.28' |
| C4 | 23.56 | 15.00 | 90°00'00" | S 44°15'08" E | 21.21' |
| C5 | 13.60 | 15.00 | 51°56'37" | N 64°46'33" E | 13.14' |
| C6 | 75.07 | 58.00 | 74°09'36" | S 75°53'03" W | 69.94' |
| C7 | 70.98 | 58.00 | 70°06'57" | N 31°58'41" W | 66.63' |
| C8 | 70.33 | 58.00 | 69°28'26" | N 37°49'01" E | 66.10' |
| C9 | 71.00 | 58.00 | 70°08'15" | S 72°22'39" E | 66.65' |
| C10 | 13.60 | 15.00 | 51°56'37" | N 63°16'50" W | 13.14' |
| C11 | 23.56 | 15.00 | 90°00'00" | S 45°44'52" W | 21.21' |
| C12 | 287.38 | 58.00 | 283°53'13" | N 00°44'52" E | 71.51' |
| C13 | 23.56 | 15.00 | 90°00'00" | S 44°15'08" E | 21.21' |
| C14 | 13.91 | 15.00 | 53°07'48" | N 64°10'57" E | 13.42' |
| C15 | 61.00 | 60.00 | 58°15'11" | S 66°44'39" W | 58.41' |
| C16 | 68.77 | 60.00 | 65°40'01" | N 51°17'46" W | 65.06' |
| C17 | 71.36 | 60.00 | 68°08'43" | N 15°36'37" E | 67.23' |
| C18 | 24.58 | 60.00 | 23°28'25" | N 61°25'11" E | 24.41' |
| C19 | 13.91 | 15.00 | 53°07'48" | S 46°35'29" W | 13.42' |
| C20 | 24.81 | 15.00 | 94°46'35" | S 27°21'43" E | 22.08' |
| C21 | 40.47 | 200.00 | 11°35'42" | N 68°57'09" W | 40.41' |
| C22 | 63.73 | 140.00 | 26°04'54" | N 76°11'45" W | 63.18' |
| C23 | 23.57 | 15.00 | 90°00'57" | S 45°45'20" W | 21.22' |
| C24 | 23.56 | 15.00 | 89°59'03" | S 44°14'40" E | 21.21' |
| C25 | 18.52 | 15.00 | 70°44'14" | N 55°23'42" E | 17.37' |
| C26 | 28.61 | 15.00 | 109°16'43" | N 34°36'47" W | 24.47' |
| C27 | 23.56 | 15.00 | 90°00'00" | S 45°44'52" W | 21.21' |
| C28 | 225.71 | 60.00 | 215°32'20" | N 34°36'47" W | 114.28' |
| C29 | 18.43 | 28.00 | 37°42'19" | S 19°36'01" W | 18.10' |
| C30 | 31.59 | 48.00 | 37°42'19" | N 19°36'01" E | 31.02' |
| C31 | 18.43 | 28.00 | 37°42'19" | N 19°36'01" E | 18.10' |
| C32 | 31.59 | 48.00 | 37°42'19" | S 19°36'01" W | 31.02' |
| C33 | 11.11 | 5.00 | 127°17'04" | S 64°23'23" W | 8.96' |
| C34 | 45.55 | 70.00 | 37°17'02" | S 70°36'37" E | 44.75' |
| C35 | 109.96 | 70.00 | 90°00'00" | N 45°44'52" E | 98.99' |
| C36 | 52.00 | 40.00 | 74°28'45" | N 36°29'31" W | 48.41' |
| C37 | 90.32 | 34.74 | 148°57'29" | S 00°44'52" W | 66.95' |
| C38 | 52.00 | 40.00 | 74°28'45" | N 37°59'14" E | 48.41' |
| C39 | 109.96 | 70.00 | 90°00'00" | N 44°15'08" W | 98.99' |
| C40 | 45.48 | 70.00 | 37°13'40" | S 72°08'02" W | 44.69' |
| C41 | 11.10 | 5.00 | 127°13'40" | S 62°51'58" E | 8.96' |
| C42 | 3.93 | 5.00 | 45°00'03" | S 23°14'50" W | 3.83' |
| C43 | 48.69 | 62.00 | 45°00'00" | S 68°14'52" W | 47.45' |
| C44 | 97.39 | 62.00 | 90°00'00" | N 44°15'08" W | 87.68' |
| C45 | 41.60 | 32.00 | 74°28'45" | N 37°59'14" E | 38.73' |
| C46 | 111.12 | 42.74 | 148°57'29" | S 00°44'52" W | 82.37' |
| C47 | 41.60 | 32.00 | 74°28'45" | N 36°29'31" W | 38.73' |
| C48 | 97.39 | 62.00 | 90°00'00" | N 45°44'52" E | 87.68' |
| C49 | 48.82 | 62.00 | 45°06'54" | S 66°41'41" E | 47.57' |
| C50 | 3.92 | 5.00 | 44°53'06" | S 21°41'41" E | 3.82' |

| PARCEL LINE TABLE | | |
|-------------------|---------------|----------|
| LINE # | BEARING | DISTANCE |
| L1 | S 63°09'18" E | 22.14' |
| L2 | S 89°15'08" E | 126.28' |
| L3 | S 00°44'52" W | 72.88' |
| L4 | S 00°44'52" W | 99.36' |
| L5 | S 00°44'52" W | 99.43' |
| L6 | S 00°44'52" W | 99.50' |
| L7 | S 00°44'52" W | 99.56' |
| L8 | S 00°44'52" W | 99.63' |
| L9 | S 00°44'52" W | 99.70' |
| L10 | S 00°44'52" W | 99.77' |
| L11 | S 00°44'52" W | 99.84' |
| L12 | S 00°44'52" W | 99.91' |
| L13 | S 00°44'52" W | 99.98' |
| L14 | S 00°44'52" W | 100.05' |
| L15 | S 00°44'52" W | 98.18' |
| L16 | N 89°15'08" W | 145.08' |
| L17 | S 89°15'08" E | 145.18' |
| L18 | N 89°15'08" W | 145.28' |
| L19 | S 89°15'08" E | 145.38' |
| L20 | N 89°15'08" W | 145.48' |
| L21 | S 89°15'08" E | 145.58' |
| L22 | N 89°15'08" W | 145.68' |
| L23 | S 89°15'08" E | 145.79' |
| L24 | N 89°15'08" W | 145.89' |
| L25 | S 89°15'08" E | 145.99' |
| L26 | N 89°15'08" W | 146.09' |
| L27 | S 89°15'08" E | 146.19' |
| L28 | S 00°44'52" W | 75.38' |
| L29 | S 00°44'52" W | 95.38' |
| L30 | S 00°44'52" W | 95.38' |
| L31 | S 00°44'52" W | 80.38' |
| L32 | S 89°15'08" E | 133.13' |
| L33 | S 89°15'08" E | 133.13' |
| L34 | S 89°15'08" E | 133.13' |
| L35 | S 00°44'52" W | 95.38' |
| L36 | S 00°44'52" W | 95.38' |
| L37 | S 00°44'52" W | 109.50' |
| L38 | S 89°15'08" E | 118.13' |
| L39 | S 89°15'08" E | 47.61' |
| L40 | N 22°57'51" E | 92.69' |

| PARCEL LINE TABLE | | |
|-------------------|---------------|----------|
| LINE # | BEARING | DISTANCE |
| L41 | S 86°55'12" E | 81.83' |
| L42 | S 17°26'47" E | 88.84' |
| L43 | S 89°15'08" E | 53.77' |
| L44 | S 89°15'08" E | 111.97' |
| L45 | S 00°44'52" W | 94.50' |
| L46 | S 89°15'08" E | 126.97' |
| L47 | S 89°15'08" E | 157.10' |
| L48 | S 89°15'08" E | 93.86' |
| L49 | S 00°44'52" W | 120.03' |
| L50 | N 89°15'08" W | 92.89' |
| L51 | S 00°44'52" W | 135.03' |
| L52 | S 89°15'08" E | 107.89' |
| L53 | S 89°15'08" E | 107.53' |
| L54 | N 89°15'08" W | 107.53' |
| L55 | N 89°15'08" W | 107.53' |
| L56 | N 89°15'08" W | 107.53' |
| L57 | S 00°44'52" W | 135.03' |
| L58 | N 89°15'08" W | 107.53' |
| L59 | S 00°44'52" W | 135.03' |
| L60 | N 89°15'08" W | 107.53' |
| L61 | S 00°44'52" W | 135.03' |
| L62 | N 89°15'08" W | 107.53' |
| L63 | S 00°44'52" W | 135.03' |
| L64 | N 89°15'08" W | 107.53' |
| L65 | S 00°44'52" W | 135.03' |
| L66 | N 89°15'08" W | 46.87' |
| L67 | N 05°52'14" E | 105.69' |
| L68 | S 71°32'15" W | 90.42' |
| L69 | S 49°27'36" E | 173.69' |
| L70 | N 20°01'35" E | 77.72' |
| L71 | N 69°58'25" W | 167.70' |
| L72 | N 20°01'35" E | 91.22' |
| L73 | N 69°58'25" W | 136.01' |
| L74 | N 20°01'35" E | 114.23' |
| L75 | S 63°09'18" E | 29.85' |
| L76 | S 63°09'18" E | 14.43' |
| L77 | S 89°14'12" E | 53.73' |
| L78 | S 00°45'48" W | 165.00' |
| L79 | S 89°14'12" E | 80.00' |
| L80 | N 00°45'48" E | 165.00' |

| PARCEL LINE TABLE | | |
|-------------------|---------------|----------|
| LINE # | BEARING | DISTANCE |
| L81 | S 89°14'12" E | 80.00' |
| L82 | S 00°45'48" W | 165.00' |
| L83 | S 89°14'12" E | 80.00' |
| L84 | N 00°45'48" E | 165.00' |
| L85 | S 89°14'12" E | 80.00' |
| L86 | S 00°45'48" W | 165.00' |
| L87 | S 89°14'12" E | 80.00' |
| L88 | N 00°45'48" E | 165.00' |
| L89 | S 89°14'12" E | 80.00' |
| L90 | S 00°45'48" W | 165.00' |
| L91 | S 89°14'12" E | 79.07' |
| L92 | S 00°44'52" W | 150.00' |
| L93 | S 00°44'52" W | 90.57' |
| L94 | N 89°15'08" W | 129.00' |
| L95 | S 00°44'52" W | 105.60' |
| L96 | S 89°14'12" E | 114.02' |
| L97 | S 89°14'12" E | 122.18' |
| L98 | S 00°44'52" W | 105.63' |
| L99 | S 89°14'12" E | 122.13' |
| L100 | S 00°44'52" W | 105.67' |
| L101 | S 89°14'12" E | 122.09' |
| L102 | S 00°44'52" W | 105.70' |
| L103 | S 89°14'12" E | 93.25' |
| L104 | N 20°01'35" E | 101.36' |
| L105 | N 20°01'35" E | 111.87' |
| L106 | N 20°01'35" E | 90.74' |
| L107 | N 89°15'08" W | 110.64' |
| L108 | S 00°44'52" W | 105.60' |
| L109 | N 89°15'08" W | 112.34' |
| L110 | S 00°44'52" W | 105.60' |
| L111 | N 89°15'08" W | 112.34' |
| L112 | S 00°44'52" W | 105.60' |
| L113 | N 89°15'08" W | 112.34' |
| L114 | S 00°44'52" W | 105.60' |
| L115 | N 89°15'08" W | 112.34' |
| L116 | S 00°44'52" W | 105.60' |
| L117 | N 89°15'08" W | 114.01' |
| L118 | S 00°44'52" W | 90.60' |
| L119 | N 89°15'08" W | 129.00' |
| L120 | S 00°44'52" W | 105.60' |

| PARCEL LINE TABLE | | |
|-------------------|---------------|----------|
| LINE # | BEARING | DISTANCE |
| L121 | S 00°44'52" W | 105.60' |
| L122 | S 89°32'47" E | 17.45' |
| L123 | S 00°27'13" W | 10.00' |
| L124 | S 89°32'47" E | 17.40' |
| L125 | N 20°59'25" W | 24.13' |
| L126 | N 89°15'08" W | 50.00' |
| L130 | S 00°44'52" W | 1327.80' |
| L131 | S 89°15'08" E | 268.22' |
| L132 | N 89°15'08" W | 782.43' |
| L133 | N 20°01'35" E | 399.33' |
| L134 | S 89°14'12" E | 657.81' |
| L135 | S 15°42'00" E | 309.51' |
| L136 | S 89°15'08" E | 482.44' |
| L137 | S 00°44'52" W | 279.01' |
| L138 | S 89°15'08" E | 244.80' |
| L139 | S 00°44'52" W | 279.01' |
| L142 | N 89°15'08" W | 544.20' |
| L143 | S 89°15'08" E | 507.27' |
| L144 | N 41°15'28" E | 30.97' |
| L145 | N 41°15'28" E | 30.97' |
| L146 | N 41°15'28" E | 1.95' |
| L147 | S 00°44'15" W | 205.94' |
| L148 | N 17°55'14" W | 103.47' |
| L149 | S 00°00'00" E | 230.00' |
| L150 | N 90°00'00" E | 197.07' |
| L151 | S 00°00'00" E | 19.64' |
| L152 | S 00°00'00" E | 19.90' |
| L153 | N 90°00'00" W | 12.93' |
| L154 | S 00°00'00" E | 160.70' |
| L155 | N 89°15'08" W | 166.45' |
| L156 | N 89°15'08" W | 166.71' |
| L157 | N 00°00'00" E | 49.30' |
| L158 | N 90°00'00" W | 208.98' |
| L159 | N 17°55'14" W | 106.65' |
| L160 | S 00°44'15" W | 202.65' |
| L161 | S 38°27'11" W | 78.01' |
| L162 | S 00°44'52" W | 442.81' |
| L163 | N 00°44'52" E | 442.81' |
| L164 | N 38°27'11" E | 78.01' |
| L165 | N 89°15'08" W | 29.47' |

| PARCEL LINE TABLE | | |
|-------------------|---------------|----------|
| LINE # | BEARING | DISTANCE |
| L166 | S 00°44'52" W | 32.47' |
| L167 | S 00°44'52" W | 32.47' |
| L168 | S 89°15'08" E | 29.53' |
| L169 | S 45°44'52" W | 7.17' |
| L170 | N 89°15'08" W | 29.53' |
| L171 | N 00°44'52" E | 32.47' |
| L172 | N 00°44'52" E | 32.47' |
| L173 | S 89°15'08" E | 29.47' |
| L174 | S 44°08'14" E | 7.15' |

| LOT | ADDRESS |
|-----|---------|
| 101 | |
| 102 | |
| 103 | |
| 104 | |
| 105 | |
| 106 | |
| 107 | |
| 108 | |
| 109 | |
| 110 | |
| 111 | |
| 112 | |
| 113 | |
| 114 | |
| 115 | |
| 116 | |
| 117 | |
| 118 | |
| 119 | |
| 120 | |
| 121 | |
| 122 | |
| 123 | |
| 124 | |
| 125 | |
| 126 | |
| 127 | |
| 128 | |
| 129 | |
| 130 | |
| 131 | |
| 132 | |
| 133 | |
| 134 | |
| 135 | |
| 136 | |

| LOT | ADDRESS |
|-----|---------|
| 137 | |
| 138 | |
| 139 | |
| 140 | |
| 141 | |
| 142 | |
| 143 | |
| 144 | |
| 145 | |
| 146 | |
| 147 | |
| 148 | |
| 149 | |
| 150 | |
| 151 | |
| 152 | |
| 153 | |
| 154 | |



WEBER COUNTY RECORDER

ENTRY NO. _____
 FEE PAID _____
 FILED FOR RECORD AND
 RECORDED _____ AT _____
 BOOK _____ OF OFFICIAL RECORDS,
 PAGE _____
 RECORDED FOR : _____

WEBER COUNTY RECORDER
 DEPUTY