

NO.	DATE	REV. BY	DESCRIPTION

SUMMIT MOUNTAIN HOLDING GROUP, LLC.
EARL'S PEAK WATER PROJECT
 WEBER COUNTY, UTAH

DESIGN: E.N./R.G.
 DRAWN: R. GARCIA

REVIEW: G. LOSCHER
 APPROVED: J. BECKMAN

VERIFY SCALE
 BAR IS ONE INCH ON ORIGINAL DRAWING

CIVIL

OVERALL SITE PLAN ALTERNATIVES

PROJECT NUMBER: 347-12-01
 DATE: MAY 2013

DRAWING NO.
C-1

SHEET 5 OF 50

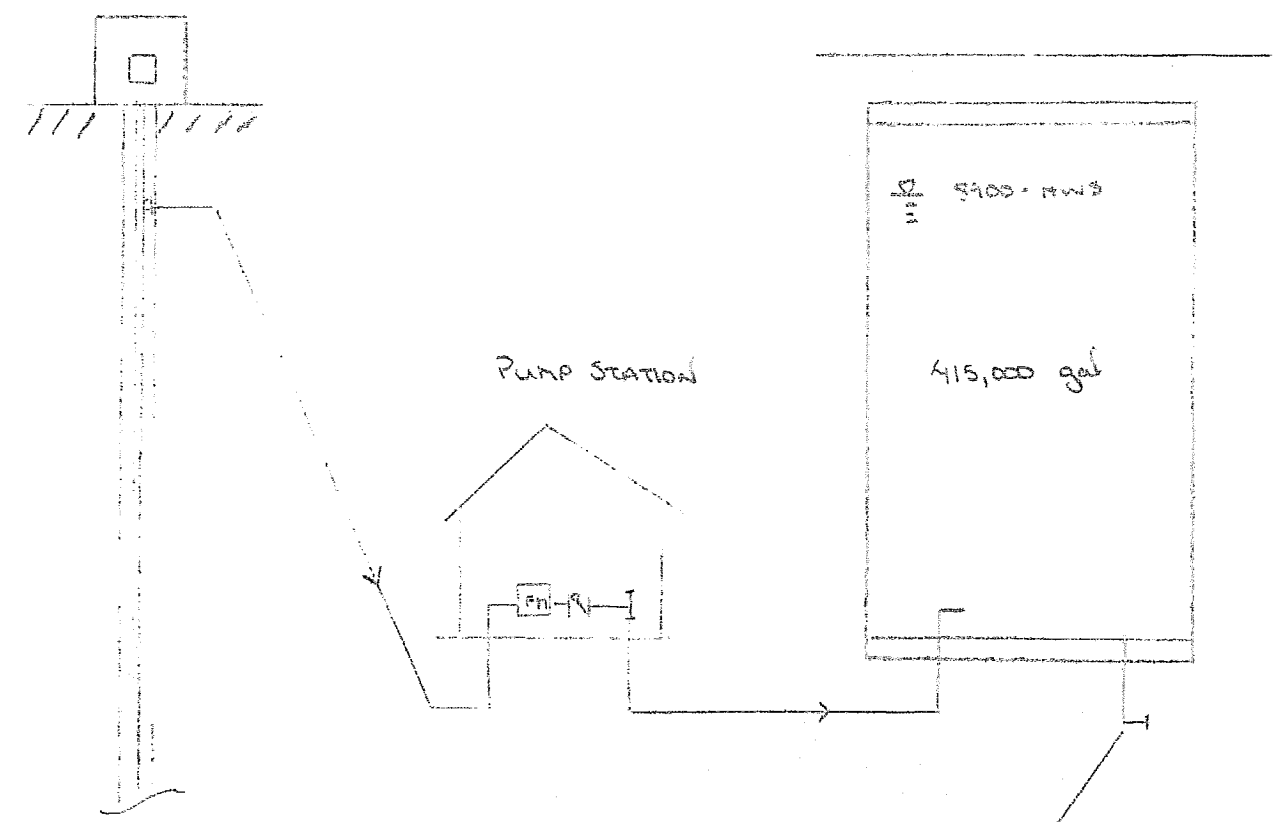
8910 NEW WELL

8900

8890

8880

8870

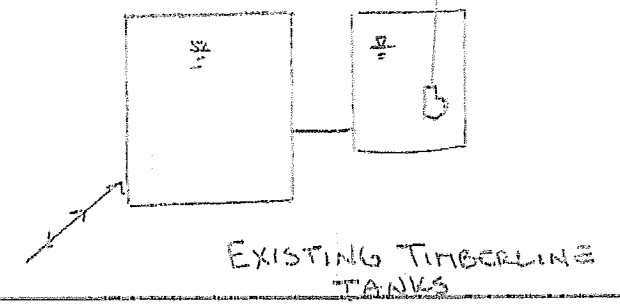
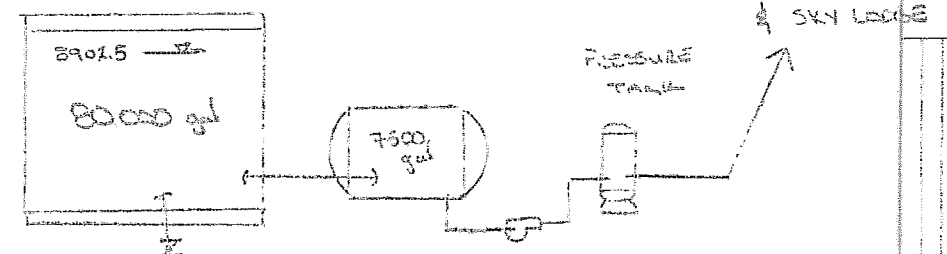


TO SUMMIT DEVELOPMENT

POWDER MTN WATER SYSTEM
CONNECTION CONCEPT

NEW TANK

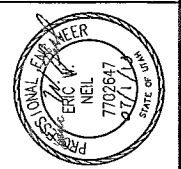
EXISTING HIDDEN LAKE WATER SYSTEM



NO.	DATE	REV. BY	DESCRIPTION

DESIGN	REVIEW	VERIFY SCALE!
DESIGN	CHECKED	DATE IS ONE INCH ON ORIGINAL DRAWING
DRAWN	APPROVED	

PROJECT NUMBER	
DATE	



NO.	DATE	REV. BY	DESCRIPTION

VERIFY SCALE
 BAB IS ONE INCH ON ORIGINAL DRAWING

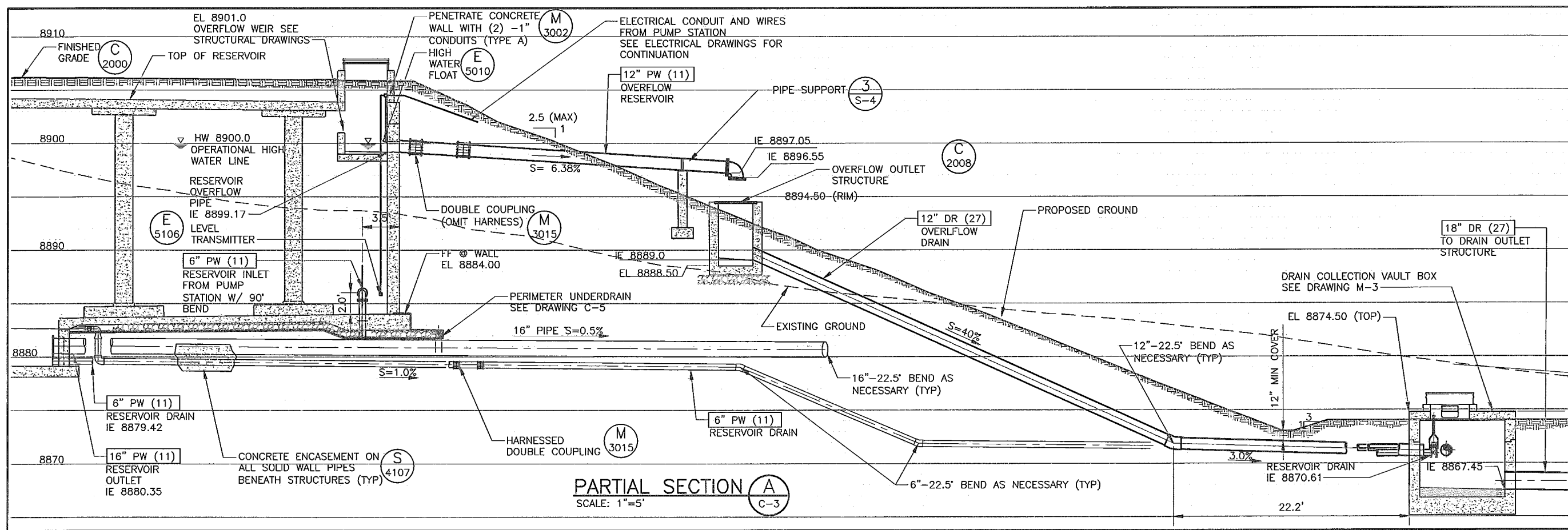
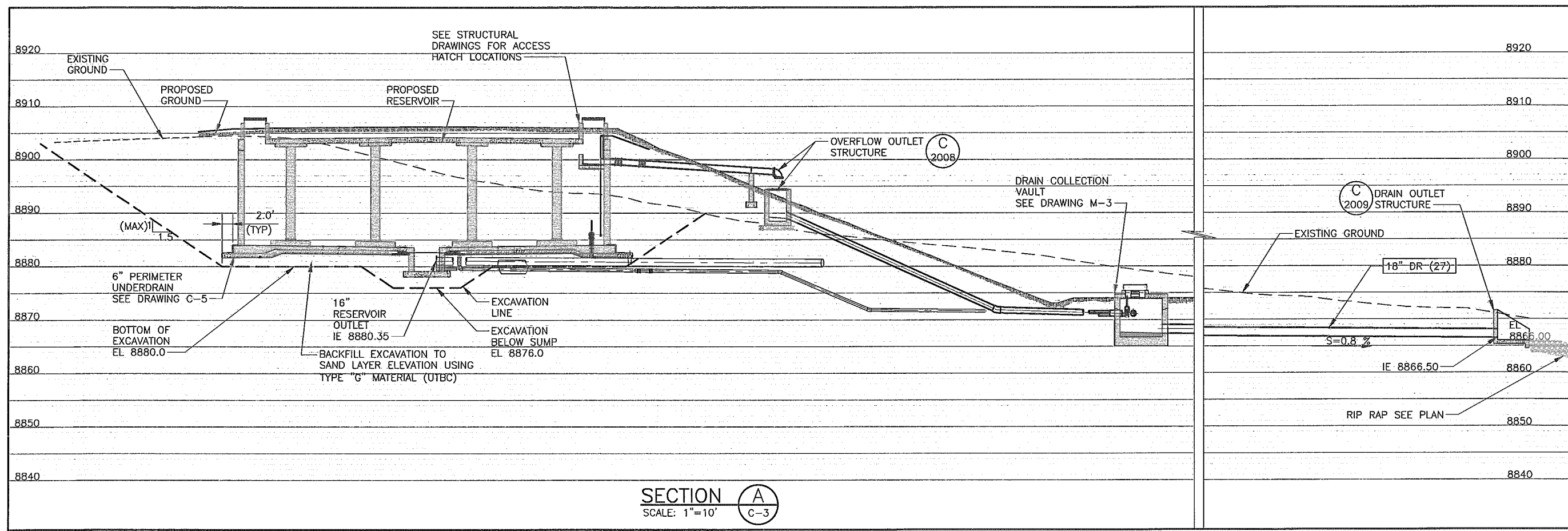
REVIEW: CHECKED G. LOSCHER APPROVED J. BECKMAN

DESIGN: E. NEIL
 DRAWN: R. GARCIA

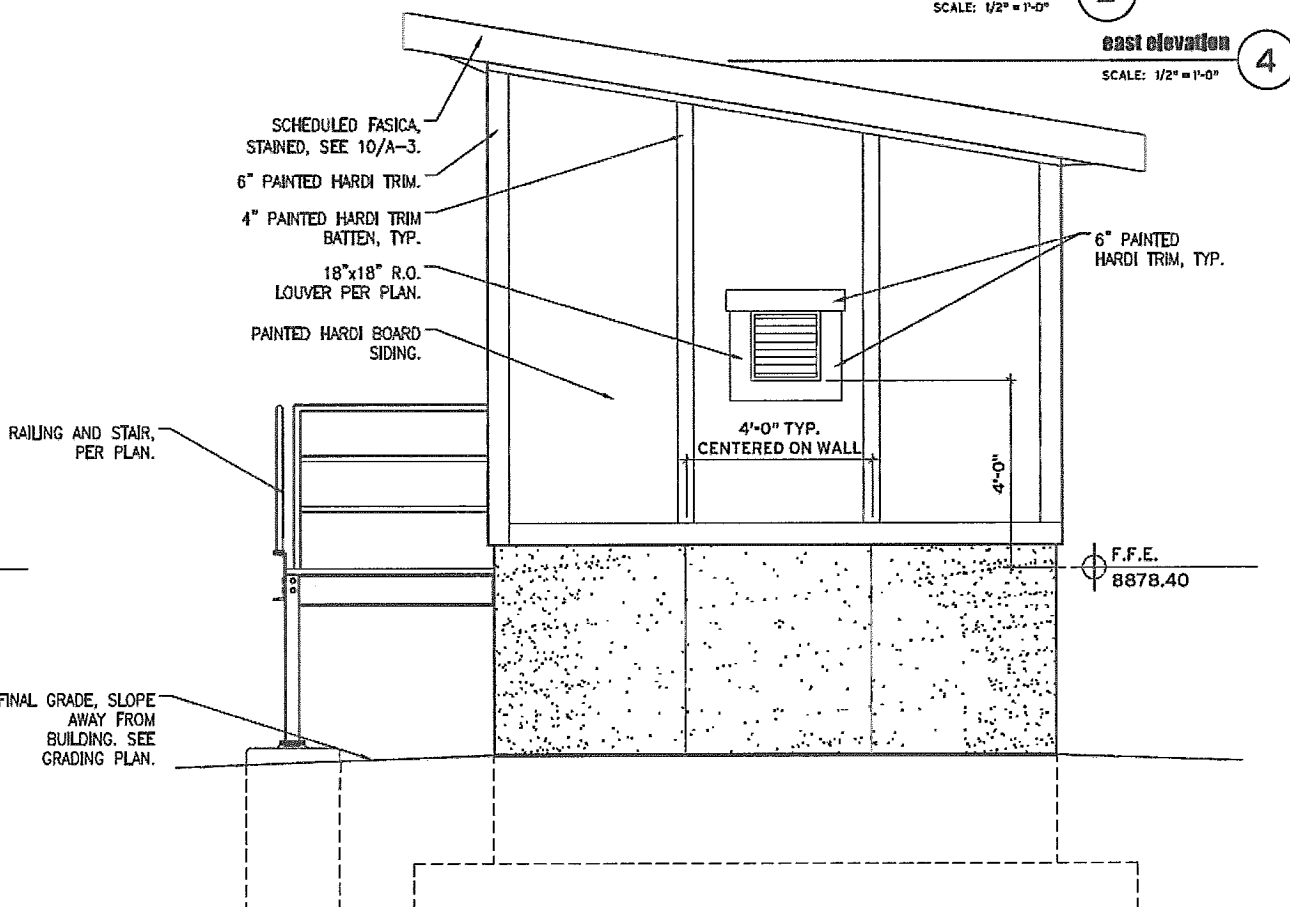
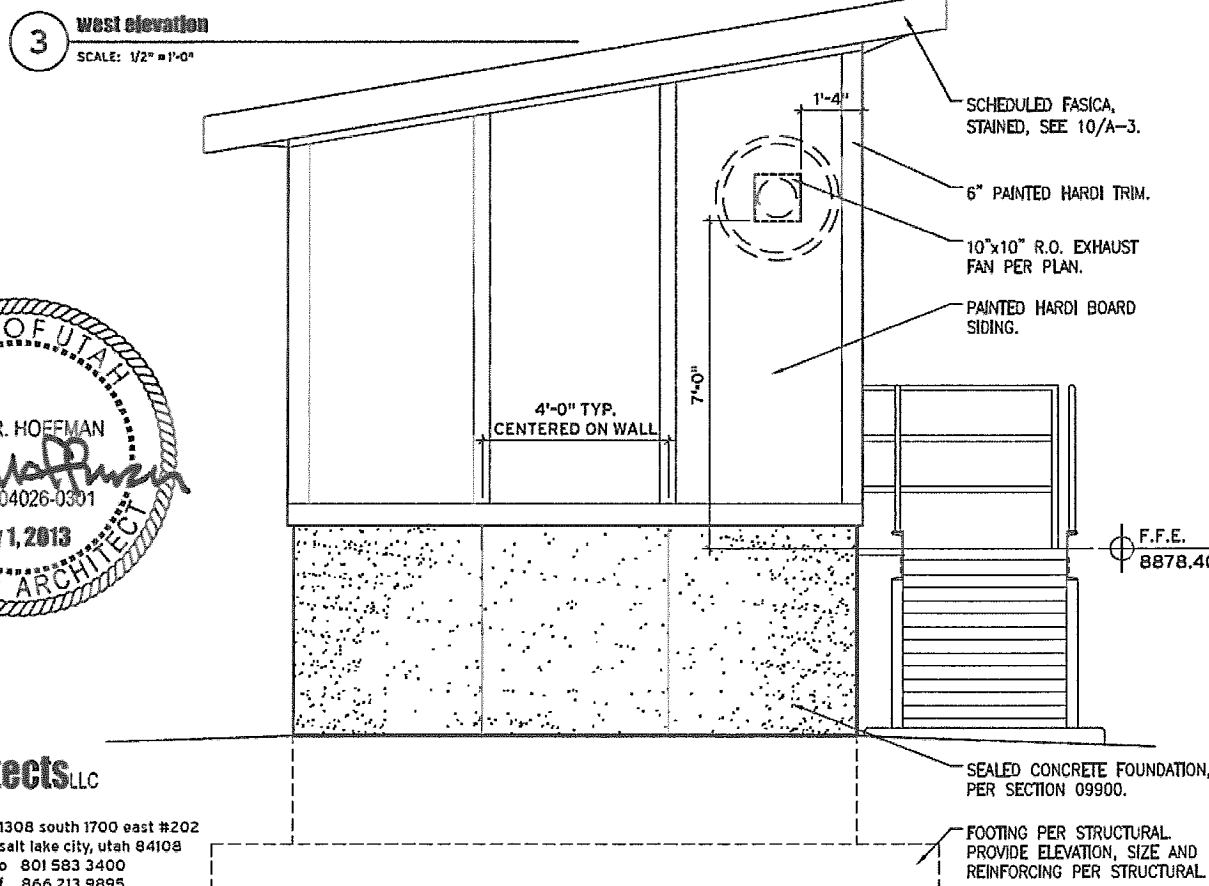
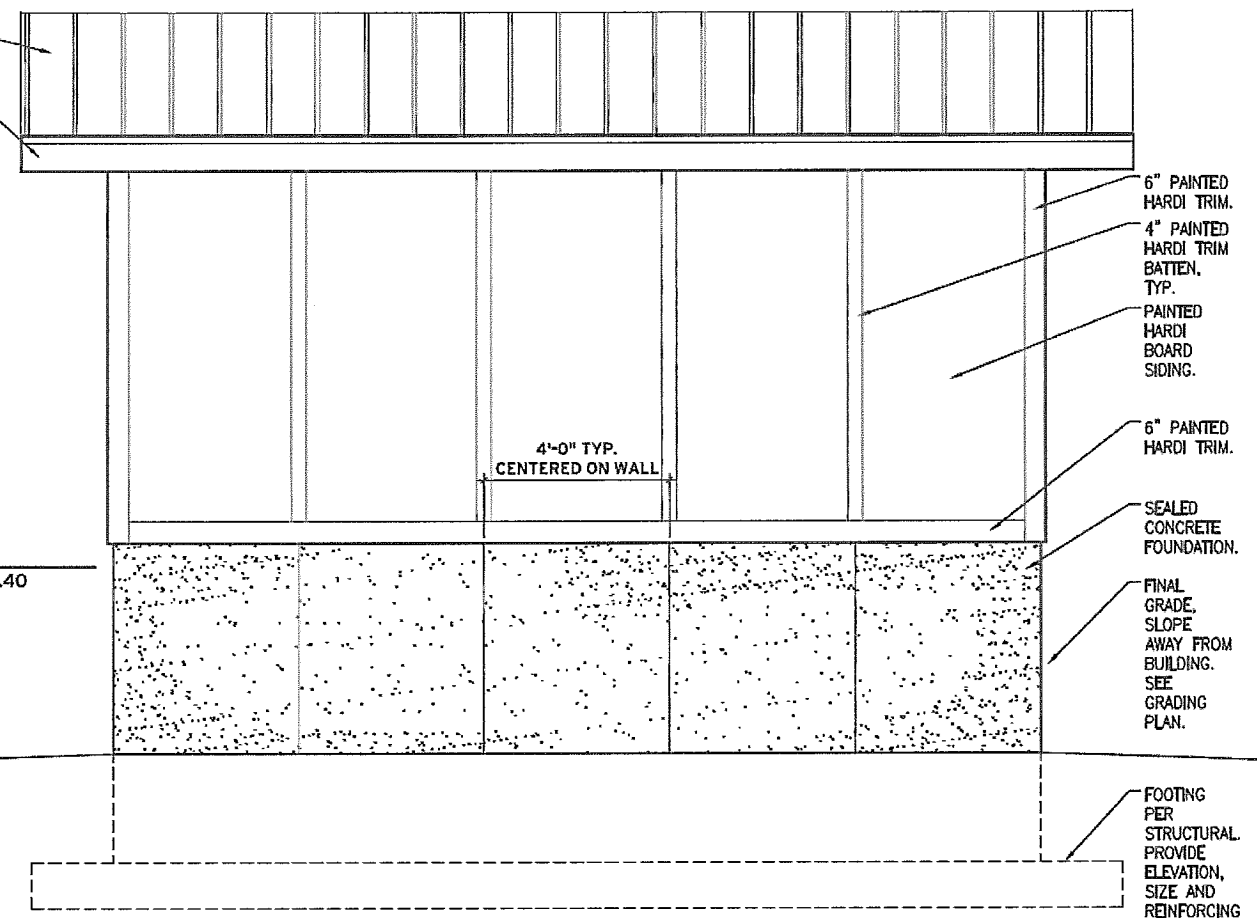
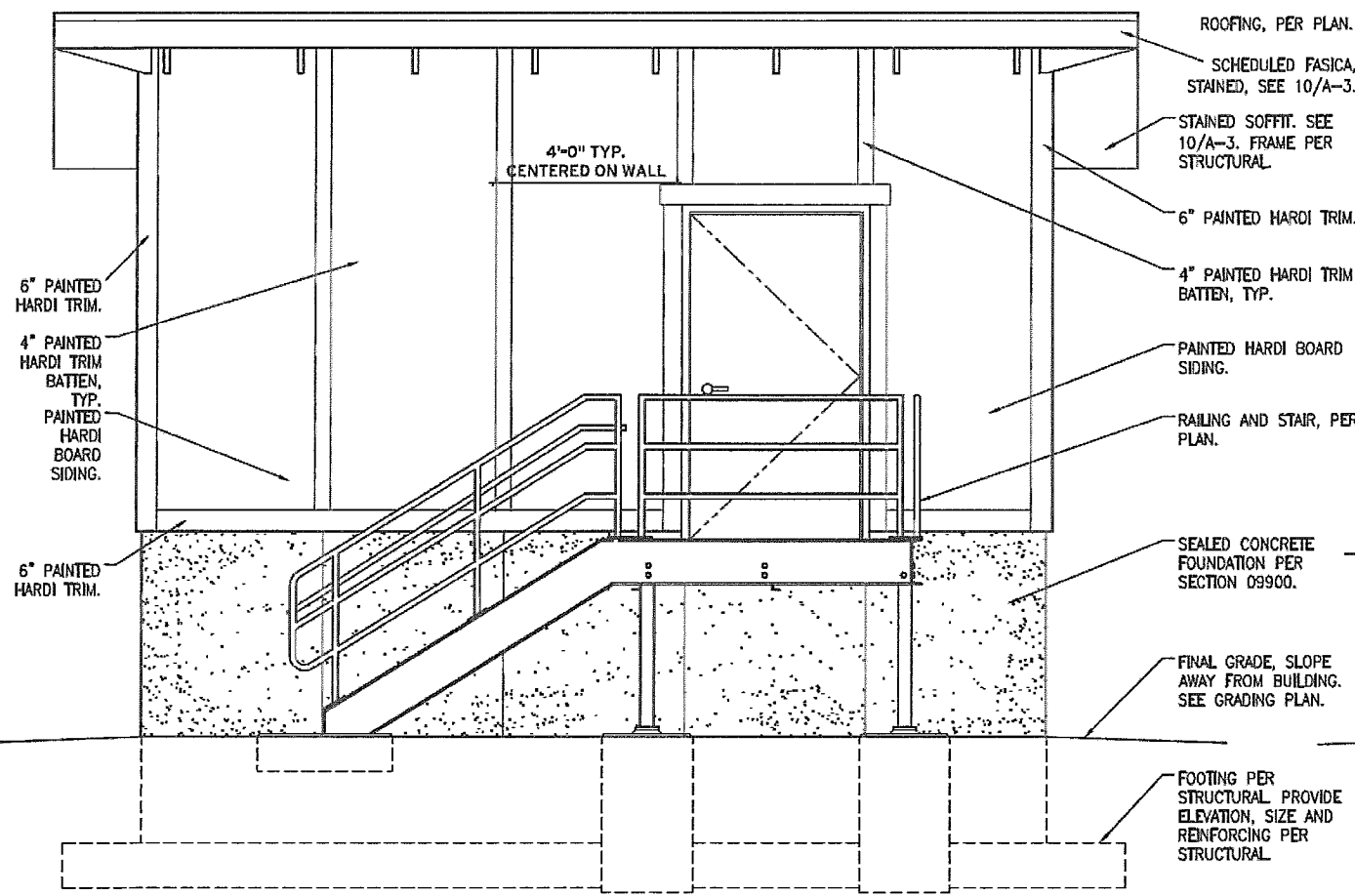
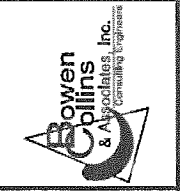
RESERVOIR YARD PIPING SECTIONS

PROJECT NUMBER: 347-12-01
 DATE: JULY 2013

DRAWING NO. C-4
 SHEET 8 OF 50



P:\Powder Mountain\2.0 - Design Phase\2.10 Drawings\sh\3471201_C-04.dwg Jul09,2013 - 8:32am



hoffman architects LLC

1308 south 1700 east #202
 salt lake city, utah 84108
 o 801 583 3400
 f 866 213 9895
 hhoffman.com

NO.	DATE	REV. BY	DESCRIPTION

DESIGN	OTHERS	STAFF
REVIEW	CHECKED	APPROVED

ARCHITECTURAL
 PUMP STATION
 EXTERIOR
 ELEVATIONS

DATE: JULY 2013
 PROJECT NUMBER: 347-12-01

DRAWING NO.
 A-2
 SHEET 15 OF 50