

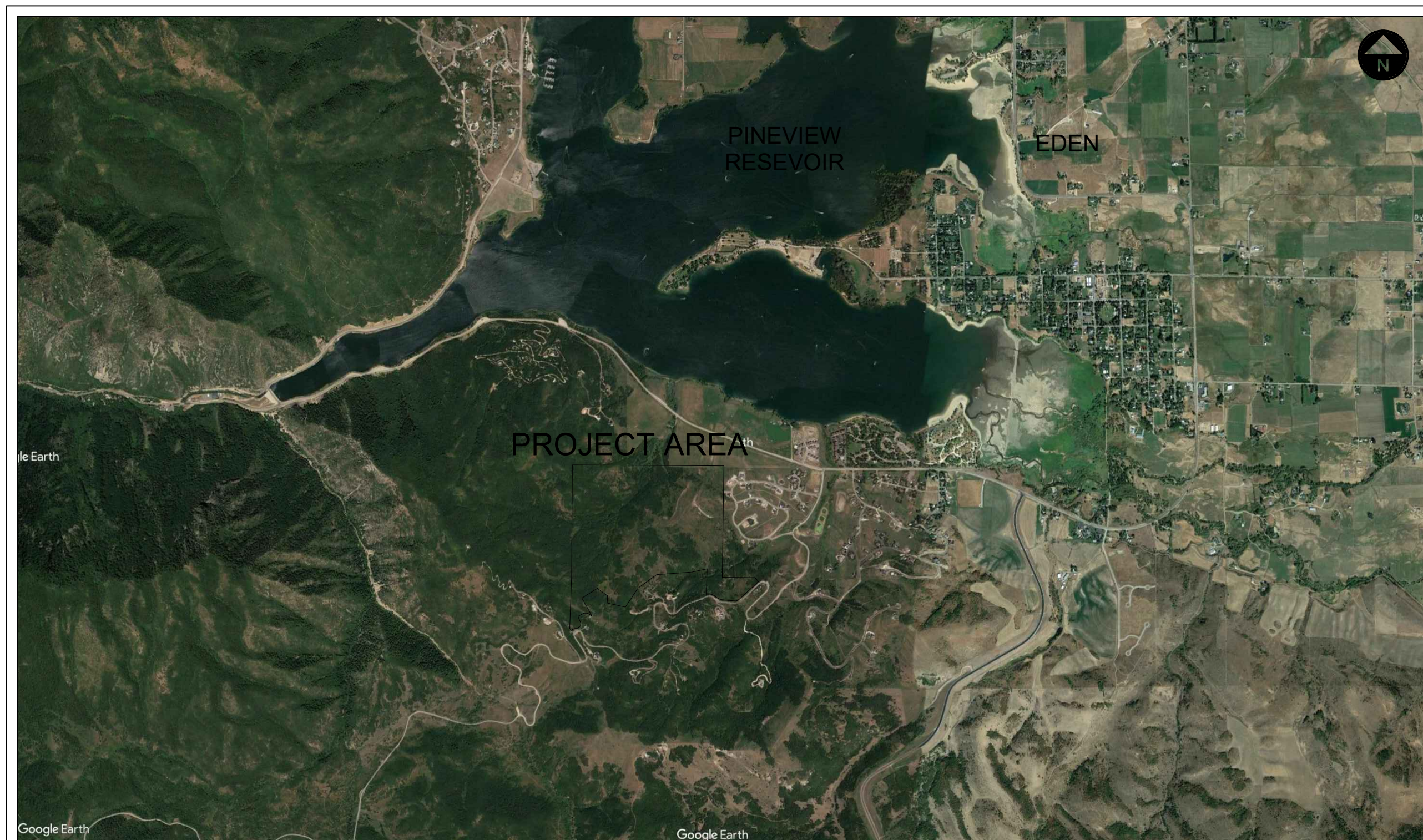
LEGACY MOUNTAIN

PRUD SUBDIVISION APPLICATION



LEGACY MOUNTAIN
PRUD SUBMITTAL
WEBER COUNTY, UTAH

LOCATION MAP



PREPARED FOR:
LEGACY MOUNTAIN HOLDINGS, LLC
JOHN LEWIS
3718 N. WOLF CREEK DRIVE
EDEN, UTAH 84310
801.430.1507



CONSULTANTS:
LANDSCAPE ARCHITECT:
LANGVARDT DESIGN GROUP
328 WEST, 200 SOUTH, SUITE 102
SALT LAKE CITY, UTAH 84101
801.583.1295



PROJECT MANAGEMENT:
THE HOUSEHOLDER GROUP
ERIC HOUSEHOLDER
2850 NORDIC VALLEY DRIVE
EDEN, UTAH 84310
801.389.0040

CIVIL ENGINEER:
GREAT BASIN ENGINEERING
MARK BABBIT
5746 S 1475 E # 200
SOUTH OGDEN, UTAH 84403
801-394-4515

SHEET INDEX:

L1.0	COVER SHEET
L1.1	ZONING PLAN
L1.2	SITE PLAN
L1.3	SLOPE ANALYSIS
L1.4	AERIAL PLAN
L1.5	PHASING PLAN
L1.6	SITE DETAILS
L1.7	LEGACY MOUNTAIN ARCHITECTURE

DATE: MARCH 2021

PROJECT: 000.0000.84

DRAWN BY: TK

REVIEW BY: TK

VERSION:

REVISIONS:

SHEET TITLE:
COVER
PAGE

SHEET NUMBER:

L1.0



LEGACY MOUNTAIN

PRUD SUBMITTAL

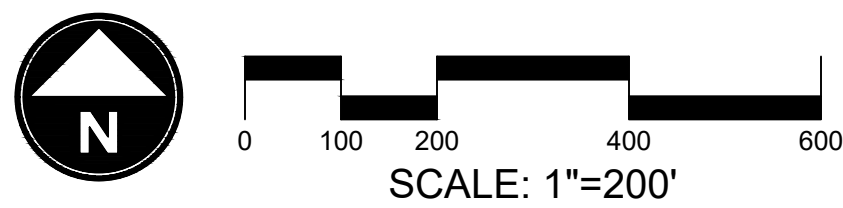
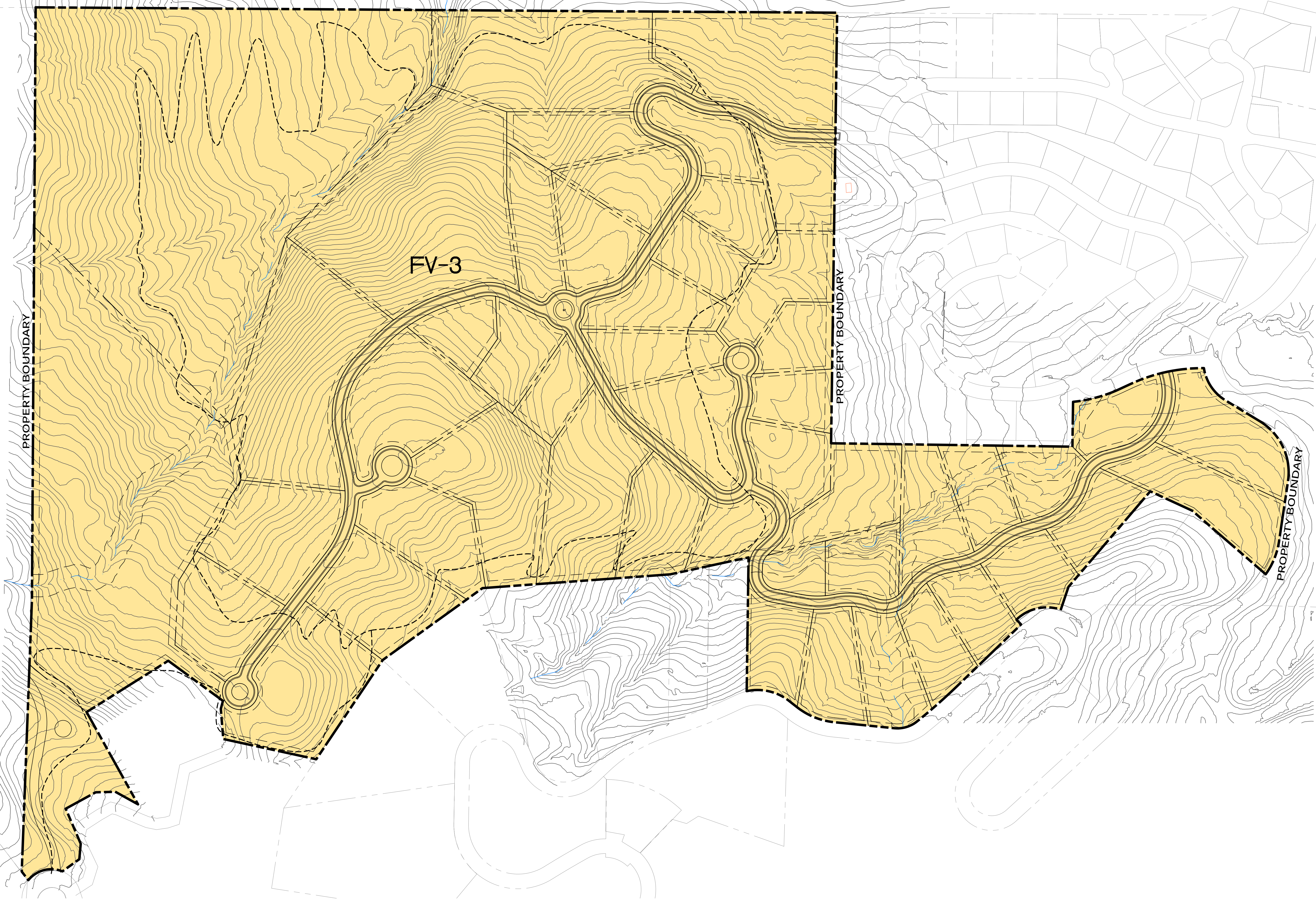
WEBER COUNTY, UTAH

DATE: MARCH 2021
PROJECT: 000.0000.84
DRAWN BY: TK
REVIEW BY: TK
VERSION:
REVISIONS:

SHEET TITLE:
EXISTING ZONING

SHEET NUMBER:

L1.1



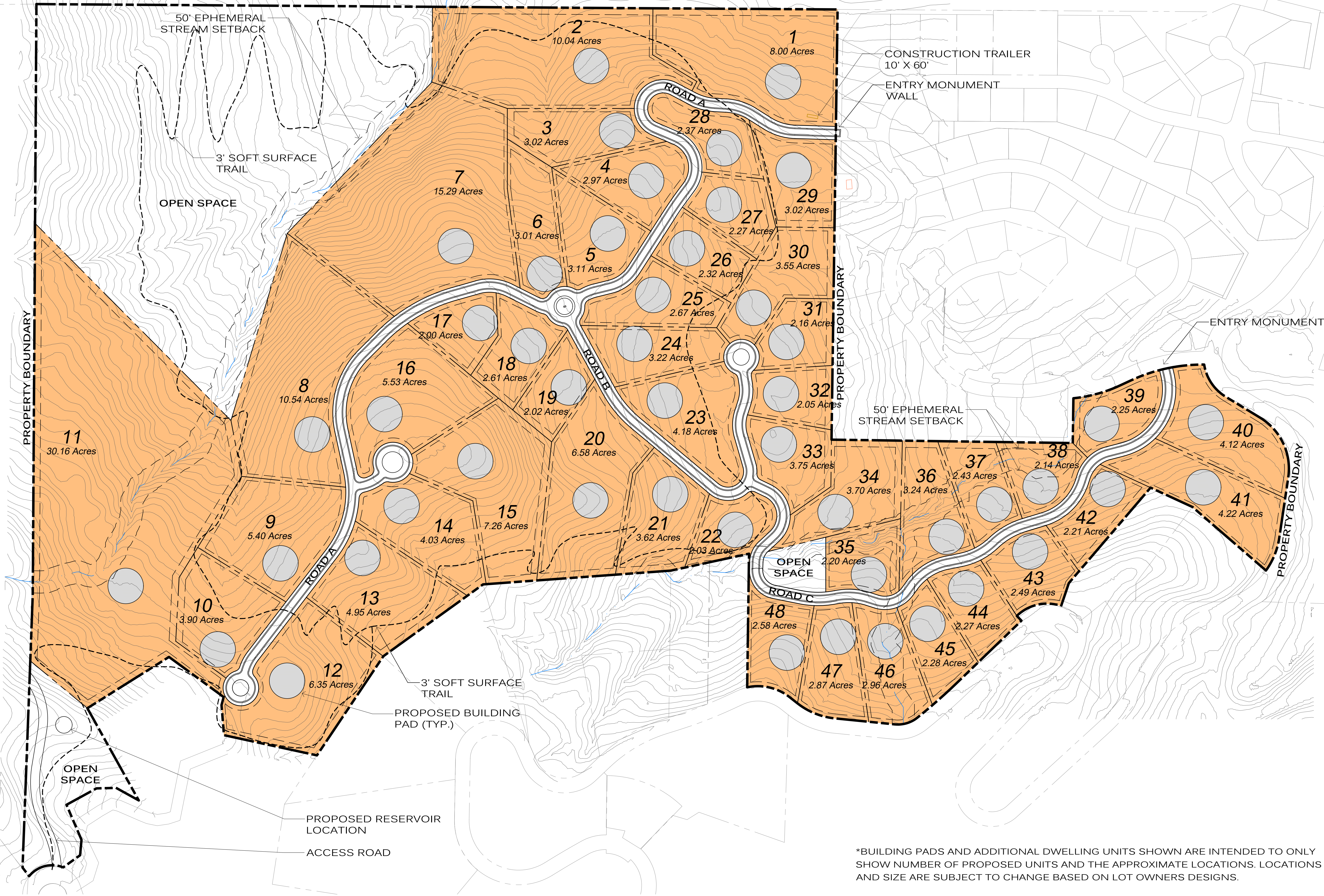
PRUD DEVELOPMENT DATA
TOTAL PRUD BOUNDARY AREA 288.37 ACRES
ZONE FV-3 288.37 ACRES



LEGACY MOUNTAIN

PRUD SUBMITTAL

WEBER COUNTY, UTAH



*BUILDING PADS AND ADDITIONAL DWELLING UNITS SHOWN ARE INTENDED TO ONLY SHOW NUMBER OF PROPOSED UNITS AND THE APPROXIMATE LOCATIONS. LOCATIONS AND SIZE ARE SUBJECT TO CHANGE BASED ON LOT OWNERS DESIGNS.

LOT LEGEND AND MIN. SETBACK STANDARDS

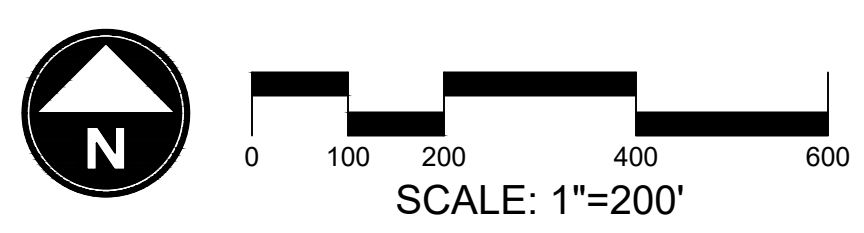
	SINGLE FAMILY
	FRONT 20
	SIDES 15
	REAR 30

PRUD DEVELOPMENT DATA

TOTAL PRUD BOUNDARY AREA	288.37 ACRES
ZONE FV-3	288.37 ACRES
ROAD ROW AREA	15.10 ACRES
SLOPES > 40%	37.50 ACRES
STEAM CORRIDOR	14.79 ACRES

NET DEVELOPABLE AREA	220.98 ACRES
PROPOSED SINGLE FAMILY UNITS	48 UNITS
PROPOSED NET DENSITY	1 UNIT/ 4.60 ACRES

PROPOSED OPEN SPACE	54.35 ACRES
PROPOSED TRAILS 3' SOFT TRAIL	17,496 LF



DATE:	MARCH 2021
PROJECT:	000.0000.84
DRAWN BY:	TK
REVIEW BY:	TK
VERSION:	
REVISIONS:	

SHEET TITLE:
OVERALL SITE PLAN

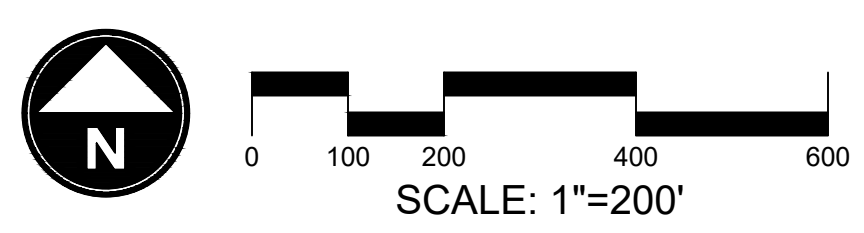
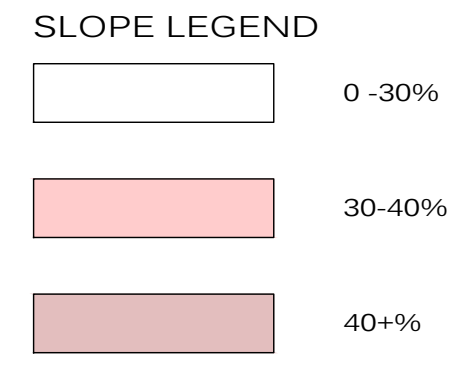
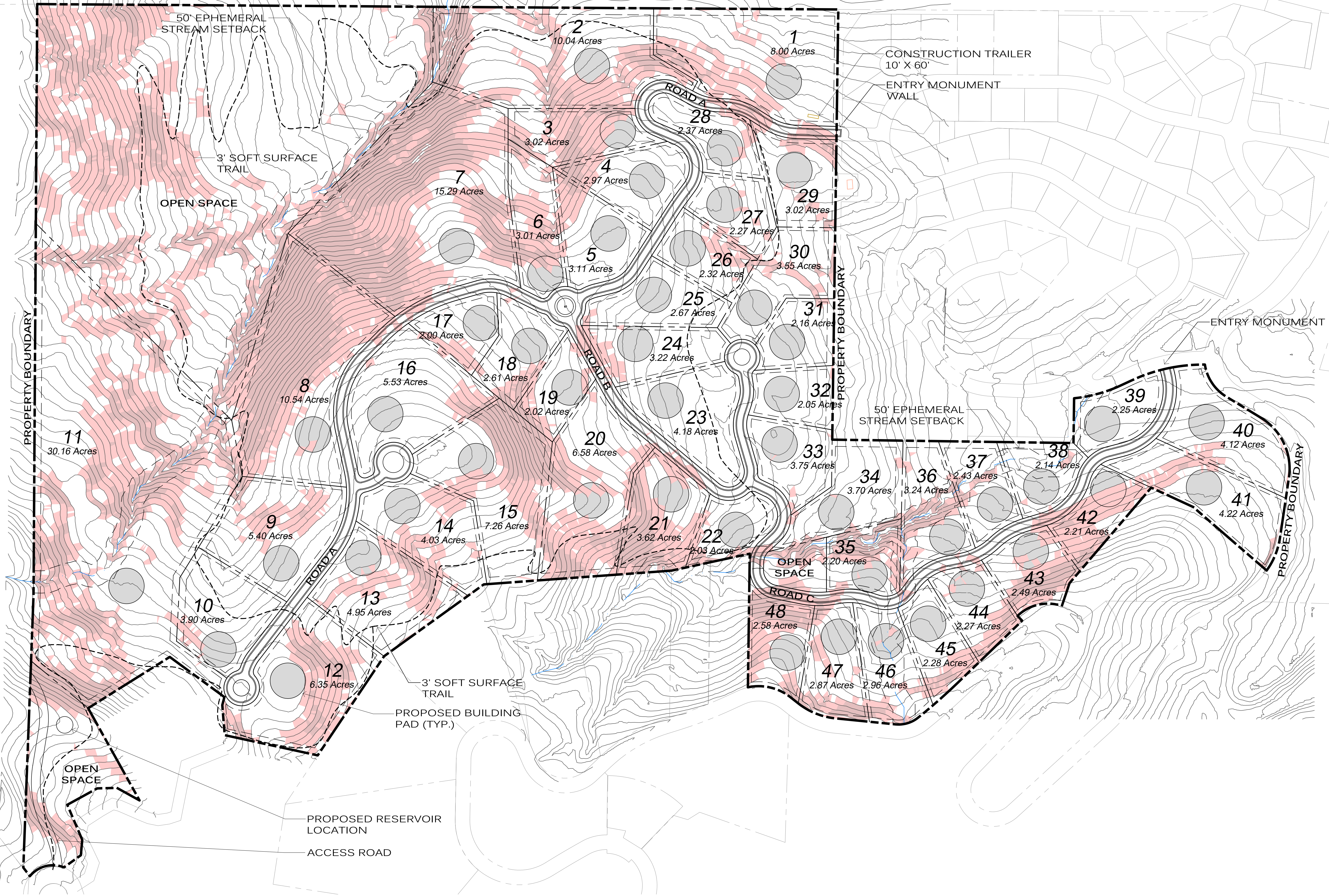
SHEET NUMBER:
L1.2



LEGACY MOUNTAIN

PRUD SUBMITTAL

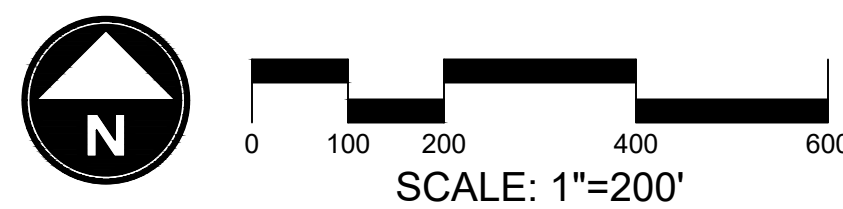
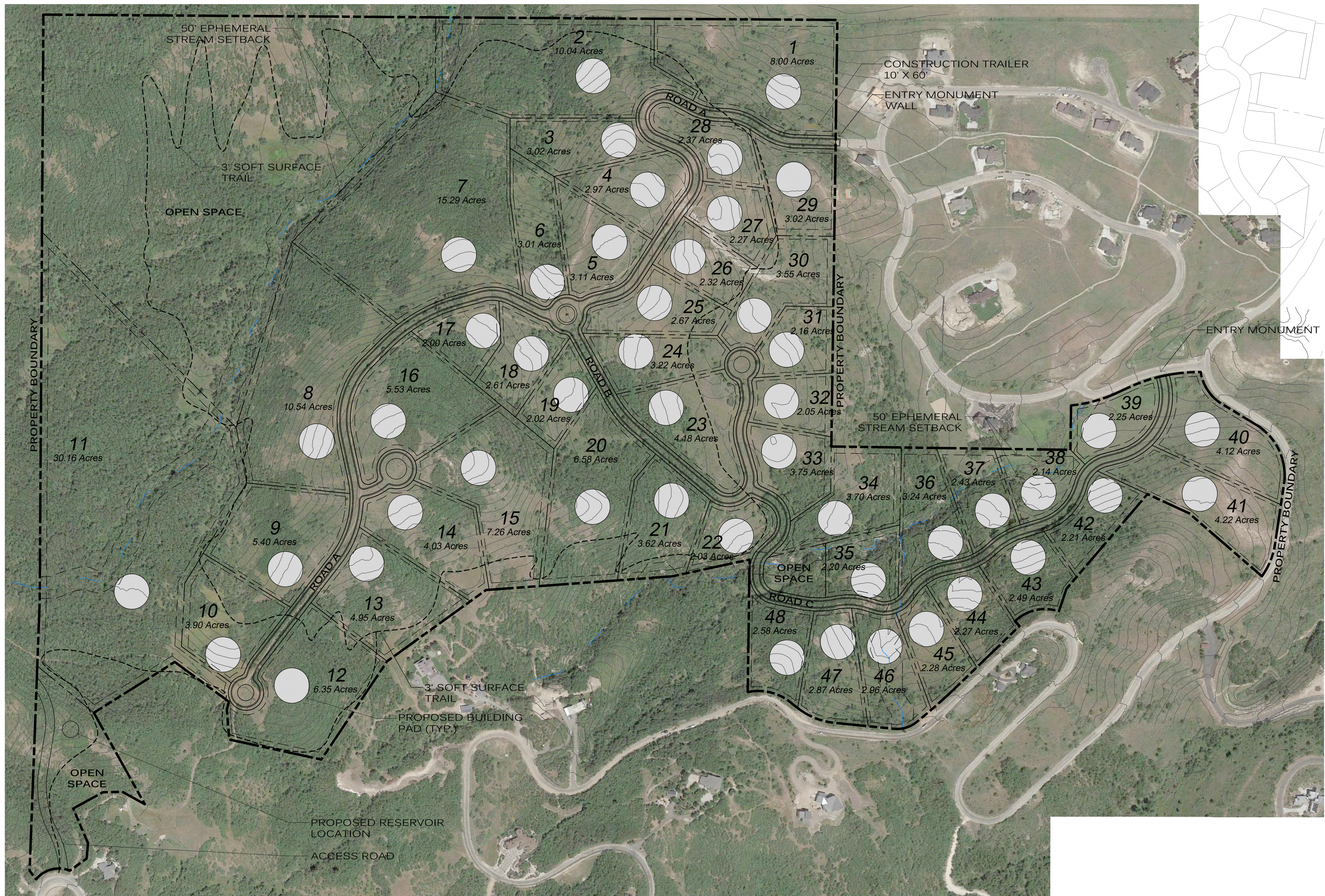
WEBER COUNTY, UTAH



DATE:	MARCH 2021
PROJECT:	000.0000.84
DRAWN BY:	TK
REVIEW BY:	TK
VERSION:	
REVISIONS:	

SHEET TITLE:
SLOPE PLAN

SHEET NUMBER:
L1.3



LEGACY MOUNTAIN

PRUD SUBMITTAL

WEBER COUNTY, UTAH

DATE:	MARCH 2021
PROJECT:	000.0000.84
DRAWN BY:	TK
REVIEW BY:	TK
VERSION:	
REVISIONS:	

SHEET TITLE:
AERIAL SITE PLAN

SHEET NUMBER:

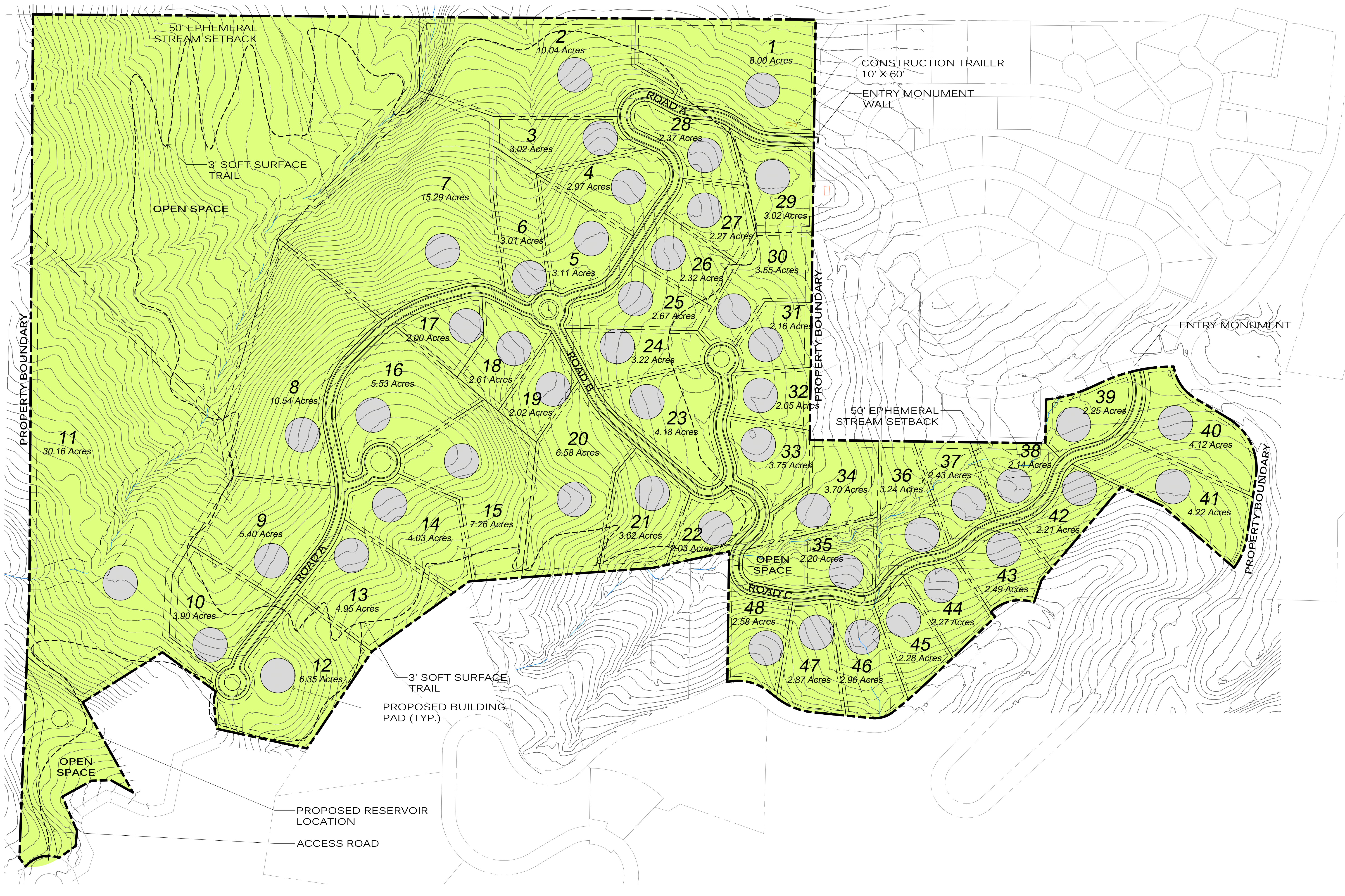
L1.4



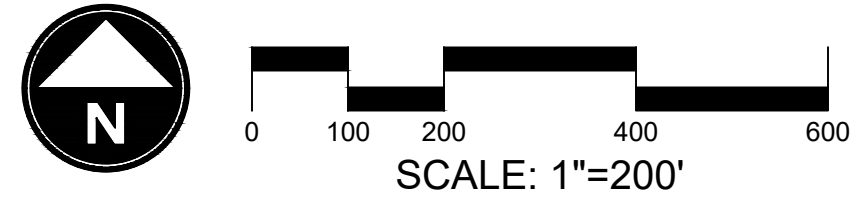
LEGACY MOUNTAIN

PRUD SUBMITTAL

WEBER COUNTY, UTAH



PHASING DEVELOPMENT DATA



DATE:	MARCH 2021
PROJECT:	000.0000.84
DRAWN BY:	TK
REVIEW BY:	TK
VERSION:	
REVISIONS:	

SHEET TITLE:
PHASING PLAN

SHEET NUMBER:
L1.5



ENTRY MONUMENT



MATERIALS



ENTRY MONUMENT WALL



LEGACY MOUNTAIN

PRUD SUBMITTAL

WEBER COUNTY, UTAH

DATE:	MARCH 2021
PROJECT:	000.0000.84
DRAWN BY:	TK
REVIEW BY:	TK
VERSION:	
REVISIONS:	

SHEET TITLE: SITE DETAILS

SHEET NUMBER:

L1.6

LEGACY MOUNTAIN ARCHITECTURE



LEGACY MOUNTAIN CONSTRUCTION TRAILER



LEGACY MOUNTAIN

PRUD SUBMITTAL

WEBER COUNTY, UTAH

DATE: MARCH 2021
PROJECT: 000.0000.84
DRAWN BY: TK
REVIEW BY: TK
VERSION:
REVISIONS:

SHEET TITLE:
LEGACY MOUNTAIN
ARCHITECTURE

SHEET NUMBER:

L1.7