

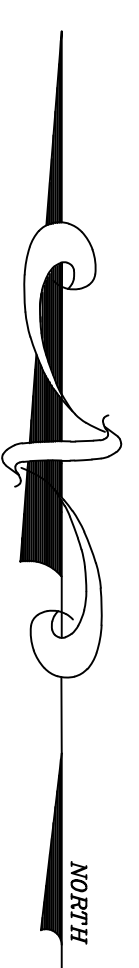
BAMBROUGH SUBDIVISION
 A PART OF THE N.W. 1/4 OF SEC. 21, T. 7 N., R. 2 W., S.L.B. & M.
 WEBER COUNTY, UTAH
 APRIL 2013

NE COR SEC 21,
 T7N, R2W, S.L.B. & M.
 CASE NO. 1983
 BRASS CORNER
 GOOD COND.

N89°52'15"E
 2615.04'

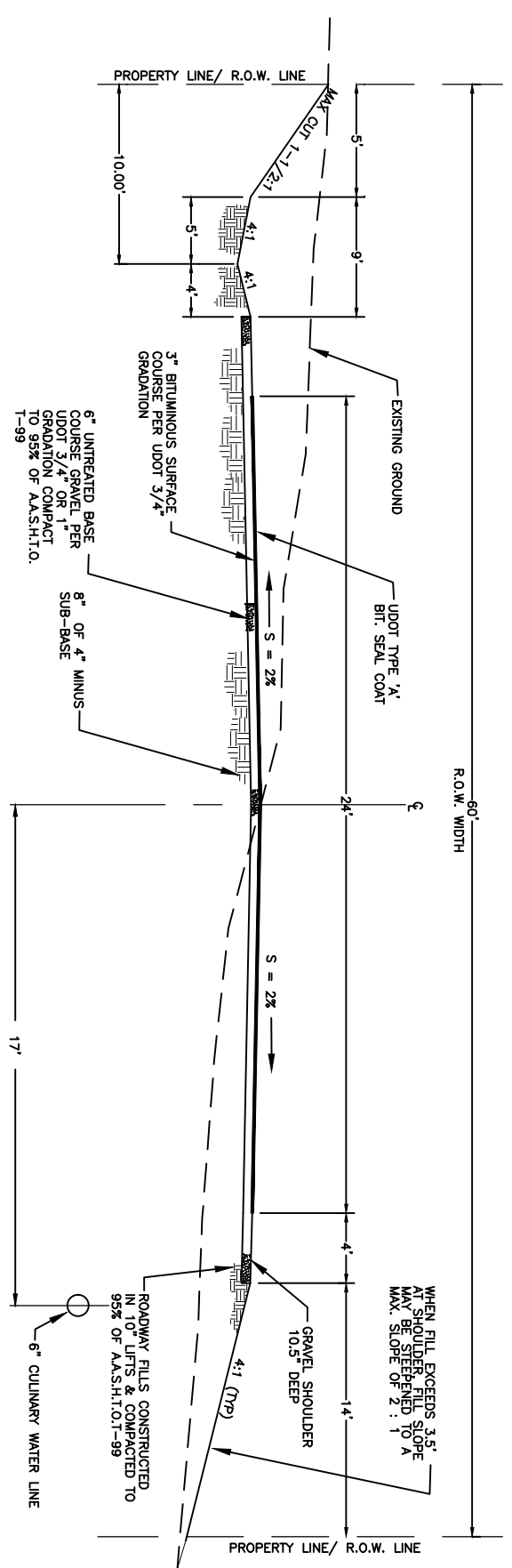
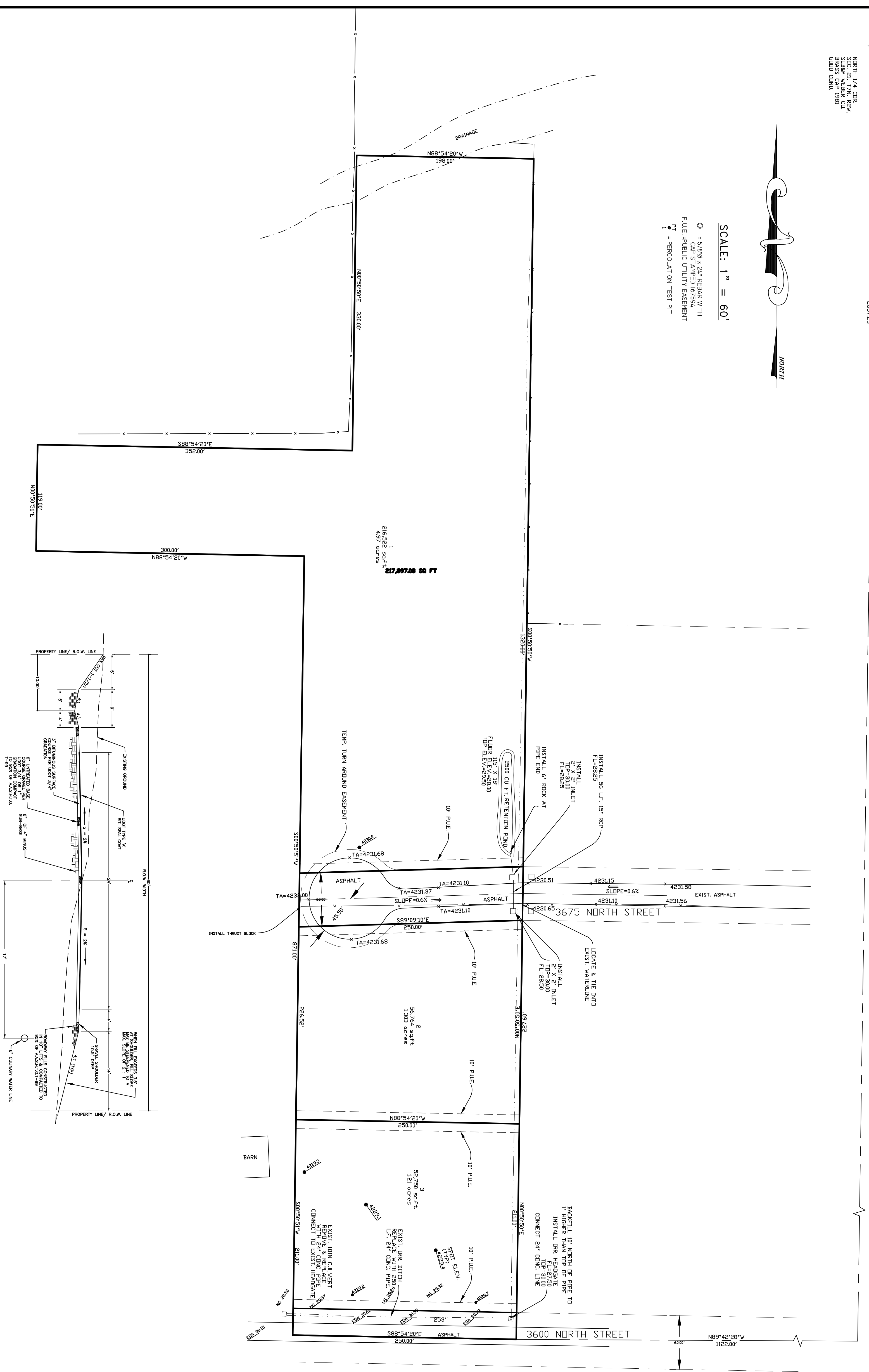
3009.930'W
 266.733'

NORTH 1/4 COR.
 SEC. 21, T7N, R2W,
 BRASS CORNER,
 GOOD COND.



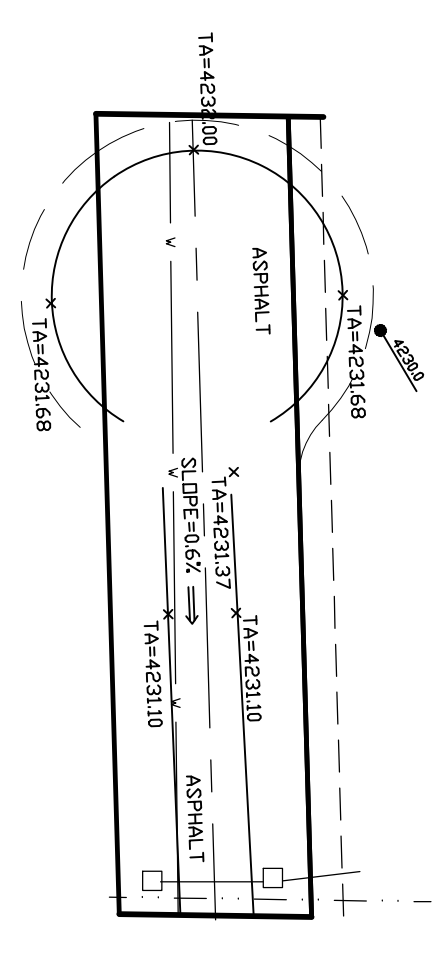
SCALE: 1" = 60'

○ = 5/8" x 24" REBAR WITH
 1" DIA. RINGS
 PILE = PUBLIC UTILITY EASEMENT
 PT = PERCOLATION TEST PIT



NOTE:
 THESE PROPOSED IMPROVEMENTS
 SHALL BE CONSIDERED AS A
 PART OF THE SUBDIVISION
 AND SHALL BE SUBJECT TO THE
 APPROVAL OF THE COUNTY ENGINEER.
 THE COUNTY ENGINEER SHALL
 BE RESPONSIBLE FOR THE
 DESIGN OF ALL IMPROVEMENTS
 AND SHALL BE RESPONSIBLE FOR
 OBTAINING ALL NECESSARY
 APPROVALS FROM THE COUNTY ENGINEER.

TYPICAL ROAD SECTION
 1/4" = 10' SCALE



STATION	1+00	2+00	3+00	4+00	5+00
ELEVATION	4231.10	4231.10	4231.10	4231.10	4231.10
PERCENT GRADE	0.6%	0.6%	0.6%	0.6%	0.6%
VERTICAL CURVE DATA	BACHTLE UP NORTH OF PIPE TO 1" INSTALL HR HEADGATE T.E.=8250 CONNECT 84" CONC. LINE				

PERCOLATION TEST PIT