

PART OF N. 1/2, SEC. 24, T.5N., R.3W., S.L.B. & M.
HOOPER CITY
BLOCKS 3 TO 6, PLAT "A"

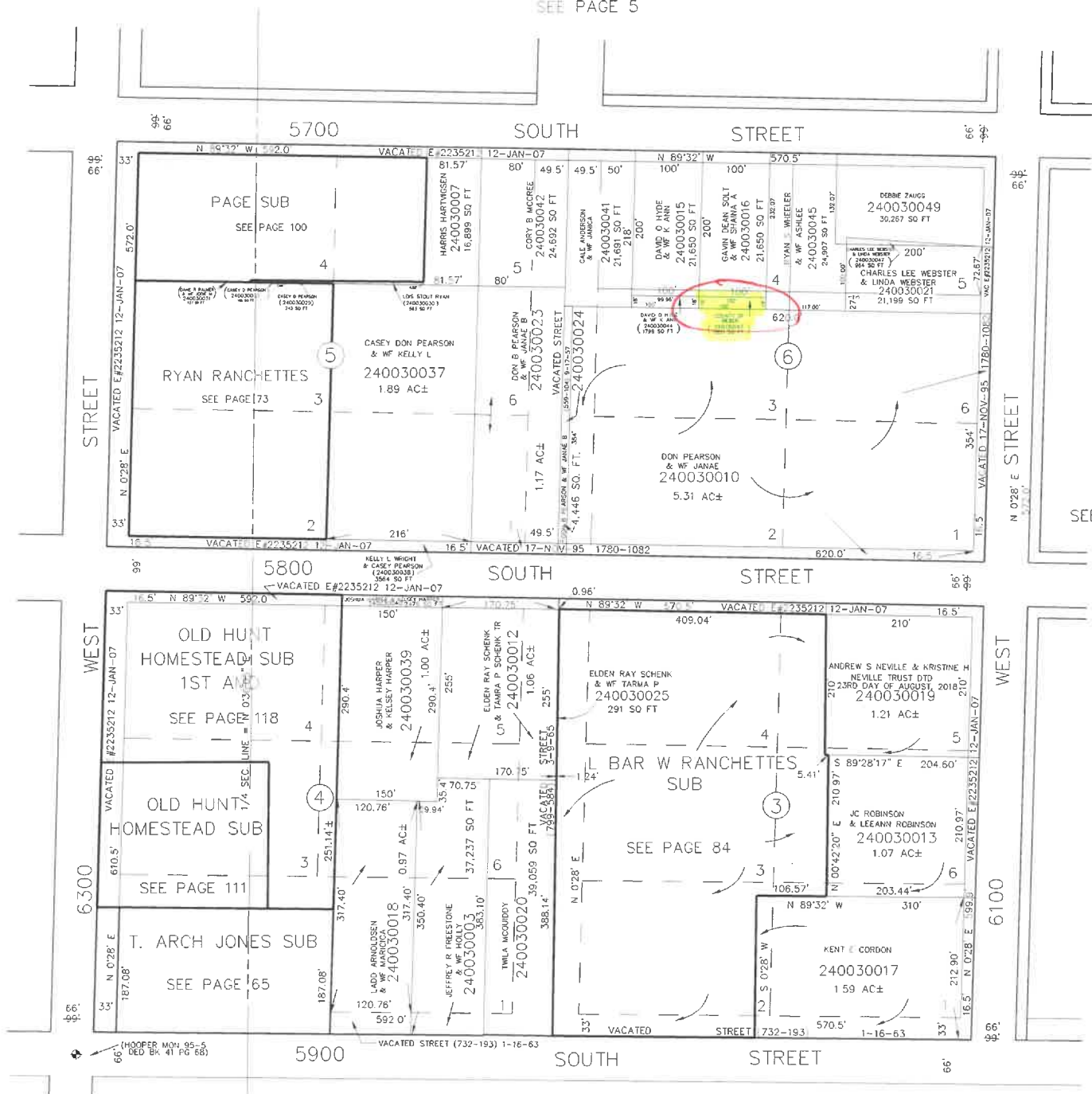
TAXING UNIT: 376

SCALE 1" = 120'

SEE PAGE 5

SEE BOOK 10, PAGE 25

SEE PAGE 2



SEE PAGE 7

BEARING & DISTANCES FOR SECTION
LINES, DETERMINED BY STATE PLANE
COORDINATES RECEIVED FROM WEBER
COUNTY SURVEYOR'S OFFICE

FOR TAX PURPOSES ONLY