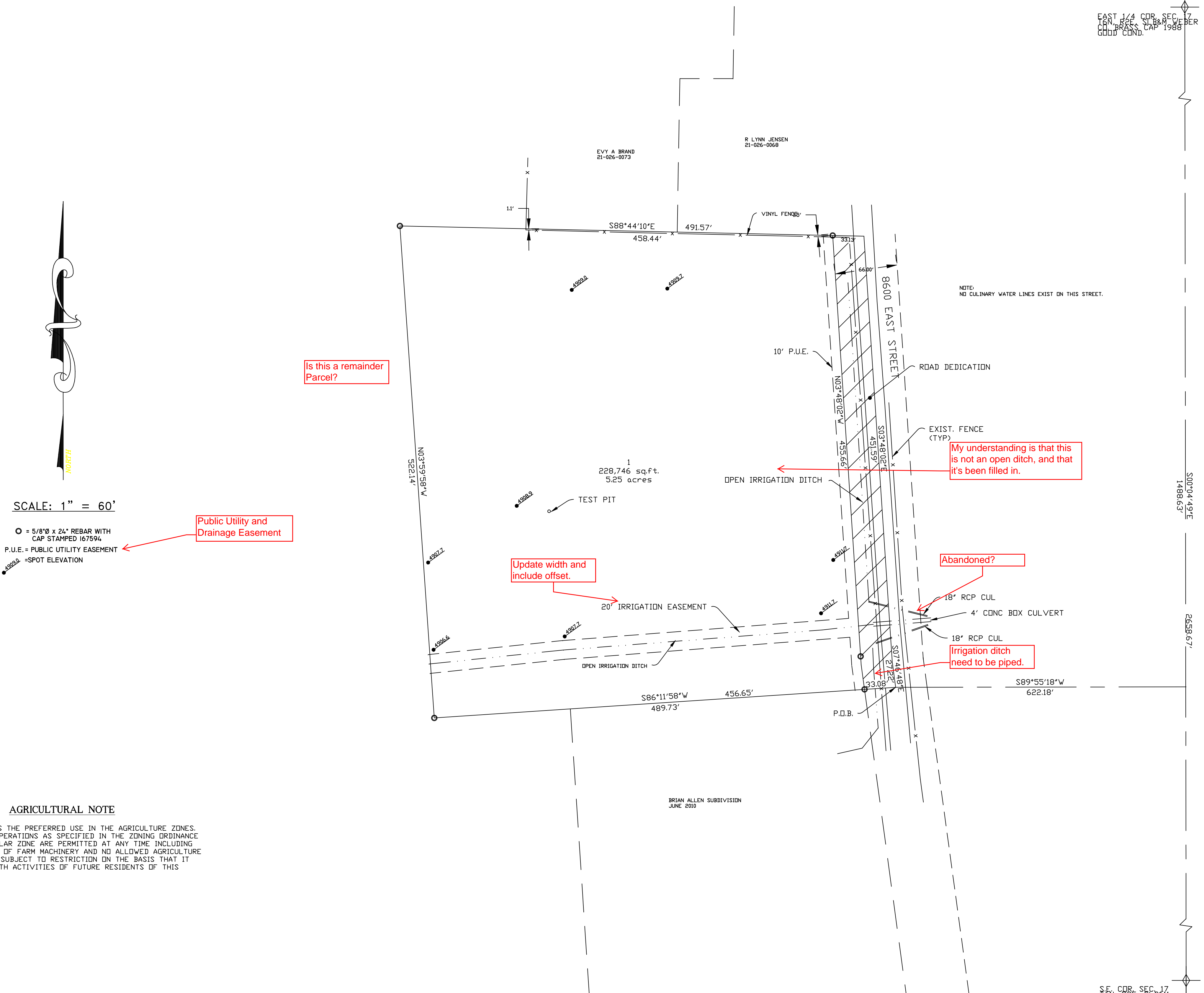


EAGLESTON SUBDIVISION

A PART OF THE S.E. 1/4 OF SEC. 17, T.6 N., R. 2 E., S.L.B. & M.
WEBER COUNTY, UTAH
APRIL 2013



EAST 1/4 COR. SEC. 17, T.6 N., R. 2 E., S.L.B. & M. WEBER COUNTY, UTAH
CORNER MARKED WITH IRON PIPES, CAP 1988
GOOD COND.

S.E. COR. SEC. 17, T.6 N., R. 2 E., S.L.B. & M. WEBER COUNTY, UTAH
CORNER MARKED WITH IRON PIPES, CAP 1988
GOOD COND.

SURVEYORS CERTIFICATE

I DALLAS K. BUTTARS, HOLDING LICENSE NUMBER 167594 IN ACCORDANCE WITH TITLE 58, CHAPTER 22, PROFESSIONAL ENGINEERS AND LAND SURVEYORS LICENSING ACT, HAVE COMPLETED A SURVEY OF THE PROPERTY DESCRIBED ON THE PLAT IN ACCORDANCE WITH SECTION 17-23-17 AND HAVE VERIFIED ALL MEASUREMENTS AND PLACED MONUMENTS AS REPRESENTED ON THE PLAT.
I DO ALSO HEREBY CERTIFY THAT THIS PLAT OF EAGLESTON SUBDIVISION IN WEBER COUNTY, UTAH, HAS BEEN CORRECTLY DRAWN TO SCALE AND IS A TRUE AND CORRECT REPRESENTATION OF THE FOLLOWING DESCRIPTION OF LANDS INCLUDED IN SAID SUBDIVISION, BASED ON DATA COMPILED FROM RECORDS IN THE WEBER COUNTY RECORDERS OFFICE, WEBER COUNTY SURVEYORS OFFICE AND OF A SURVEY MADE ON THE GROUND, AND I FURTHER CERTIFY THAT ALL LOTS MEET CURRENT LOT WIDTH AND AREA REQUIREMENTS FOR WEBER COUNTY ZONING.
SIGNED THIS _____ DAY OF _____ 20__.

P.L.S. # 167594 _____ SIGNATURE

OWNERS DEDICATION

WE THE UNDERSIGNED OWNERS OF THE HEREIN DESCRIBED TRACT OF LAND, DO HEREBY SET APART AND SUBDIVIDE THE SAME INTO LOTS AND STREETS AS SHOWN HEREIN AND NAME SAID TRACT EAGLESTON SUBDIVISION AND DO HEREBY DEDICATE TO PUBLIC USE ALL THOSE PARTS OR PORTIONS OF SAID TRACT OF LAND DESIGNATED AS STREETS, THE SAME TO BE USED AS PUBLIC THROUGHFARES FOREVER, ALSO GRANT AND DEDICATE A PERPETUAL RIGHT AND EASEMENT OVER, UPON AND UNDER THE LANDS DESIGNATED HEREIN AS PUBLIC UTILITY, STORM WATER DETENTION PONDS DRAINAGE EASEMENTS, THE SAME TO BE USED FOR THE INSTALLATION, MAINTENANCE AND OPERATION OF PUBLIC UTILITY SERVICE LINE, STORM DRAINAGE FACILITIES OR FOR THE PERPETUAL PRESERVATION OF WATER CHANNELS IN THEIR NATURAL STATE WHICHEVER IS APPLICABLE AS MAY BE AUTHORIZED BY THE GOVERNING AUTHORITY, WITH NO BUILDINGS OR STRUCTURES BEING ERRECTED WITHIN SUCH EASEMENTS.

SIGNED THIS _____ DAY OF _____ 20__.

ACKNOWLEDGMENT

STATE OF UTAH)
COUNTY OF WEBER)
ON THIS _____ DAY OF _____ 20__, PERSONALLY APPEARED BEFORE ME, THE UNDERSIGNED NOTARY PUBLIC, THE SIGNERS OF THE ABOVE OWNERS DEDICATION _____ IN NUMBER, WHO DULY ACKNOWLEDGED TO ME THAT THEY SIGNED IT FREELY AND VOLUNTARILY AND FOR THE PURPOSES THEREIN MENTIONED.

COMMISSION EXPIRES _____ NOTARY PUBLIC

BOUNDARY DESCRIPTION

A part of the Southeast quarter of section 17, Township 6 North, Range 2 East, Salt Lake Base and Meridian) Beginning at a point being South 0°04'42" East 1488.63 Feet and South 89°55'18" West 622.18 Feet from the East quarter corner of said section 17 and running thence South 86°11'58" West 489.73 Feet, thence North 3°59'58" West 522.14 Feet, thence South 88°44'10" East 491.57 Feet, thence South 3°48'02" East 451.59 Feet, thence South 7°46'48" East 27.23 Feet to the point of beginning contains 5.615 acres

PERC TABLE

PERC TEST HOLE NO.	DEPTH, IN.	PERC RATE, %PI	SOILS EVALUATION #1319H, WEBER-MORGAN HEALTH DEPARTMENT
NO. 1	24"	0%	0-15" SANDY LOAMY, GRANULAR STRUCTURE
			15-39" SANDY CLAY LOAM, MASSIVE STRUCTURE, 5% GRAVEL
			39-48" GRAVELLY SANDY LOAM, MASSIVE STRUCTURE 30% GRAVEL
			48-88" GRAVELLY LOAMY SAND, SINGLE GRAIN STRUCTURE, 60% GRAVEL

NARRATIVE

THE PURPOSE OF THIS SURVEY WAS TO CREATE A ONE (1) LOT SUBDIVISION AS SHOWN, BASIS OF BEARING IS UTAH STATE PLANE GRID BEARING AS SHOWN.

AGRICULTURAL NOTE

AGRICULTURE IS THE PREFERRED USE IN THE AGRICULTURE ZONES. AGRICULTURE OPERATIONS AS SPECIFIED IN THE ZONING ORDINANCE FOR A PARTICULAR ZONE ARE PERMITTED AT ANY TIME INCLUDING THE OPERATION OF FARM MACHINERY AND NO ALLOWED AGRICULTURE USE SHALL BE SUBJECT TO RESTRICTION ON THE BASIS THAT IT INTERFERES WITH ACTIVITIES OF FUTURE RESIDENTS OF THIS SUBDIVISION.

WEBER-MORGAN HEALTH DEPARTMENT

I HEREBY CERTIFY THAT THE SOILS, PERCOLATION RATES, AND SITE CONDITION FOR THIS SUBDIVISION HAVE BEEN INVESTIGATED BY THIS OFFICE AND ARE APPROVED FOR ON-SITE WASTEWATER DISPOSAL SYSTEMS.
SIGNED THIS _____ DAY OF _____ 20__.

DIRECTOR, WEBER-MORGAN HEALTH DEPARTMENT.

WEBER COUNTY PLANNING COMMISSION APPROVAL

THIS IS TO CERTIFY THAT THIS SUBDIVISION PLAT WAS DULY APPROVED BY THE WEBER COUNTY PLANNING COMMISSION ON THE _____ DAY OF _____ 20__.

SIGNATURE

WEBER COUNTY ENGINEER

I HEREBY CERTIFY THAT THE REQUIRED PUBLIC IMPROVEMENT STANDARDS AND DRAWINGS FOR THIS SUBDIVISION CONFORM WITH COUNTY STANDARDS AND THE AMOUNT OF THE FINANCIAL GUARANTEE IS SUFFICIENT FOR THE INSTALLATION OF THESE IMPROVEMENTS.
SIGNED THIS _____ DAY OF _____ 20__.

SIGNATURE

WEBER COUNTY SURVEYOR

I HEREBY CERTIFY THAT THE WEBER COUNTY SURVEYOR'S OFFICE HAS REVIEWED THIS PLAT FOR MATHEMATICAL CORRECTNESS, SECTION CORNER DATA, AND FOR HARMONY WITH LINES AND MONUMENTS ON RECORD IN COUNTY OFFICES. THE APPROVAL OF THIS PLAT BY THE WEBER COUNTY SURVEYOR DOES NOT RELIEVE THE LICENSED LAND SURVEYOR WHO EXECUTED THIS PLAT FROM THE RESPONSIBILITIES AND/OR LIABILITIES ASSOCIATED THEREWITH.
SIGNED THIS _____ DAY OF _____ 20__.

SIGNATURE

WEBER COUNTY COMMISSION ACCEPTANCE

THIS IS TO CERTIFY THAT THIS SUBDIVISION PLAT, THE DEDICATION OF STREETS AND OTHER PUBLIC WAYS AND FINANCIAL GUARANTEE OF PUBLIC IMPROVEMENTS ASSOCIATED WITH THIS SUBDIVISION, THEREON ARE HEREBY APPROVED AND ACCEPTED BY THE COMMISSIONERS OF WEBER COUNTY, UTAH THIS _____ DAY OF _____ 20__.

ATTEST:
TITLE: CHAIRMAN, WEBER COUNTY COMMISSION

WEBER COUNTY ATTORNEY

I HAVE EXAMINED THE FINANCIAL GUARANTEE AND OTHER DOCUMENTS ASSOCIATED WITH THIS SUBDIVISION PLAT AND IN MY OPINION THEY CONFORM WITH THE COUNTY ORDINANCE APPLICABLE THERETO AND NOW IN FORCE AND EFFECT.
SIGNED THIS _____ DAY OF _____ 20__.

SIGNATURE

LANDMARK SURVEYING, INC.
A COMPLETE LAND SURVEYING SERVICE
4646 S. 3500 W., #A-3, WEST HAVEN, UTAH 84401
PHONE 801-731-4075

CLIENT: CHUCK EAGLESTON
LOCATION: PART OF THE SOUTHEAST QUARTER OF 17, T.6N., R.2E., S.L.B.&M.
SURVEYED: APRIL 2013

REVISIONS:	DRAWN BY: DB
	CHECKED BY:
	DATE: APRIL 18, 2013
	FILE: 3330

WEBER COUNTY RECORDER

ENTRY # _____ FEE _____
FILED FOR RECORD & RECORDED
THIS _____ DAY OF _____ 20__
AT _____ IN BOOK _____ OF _____
PAGE _____

WEBER COUNTY RECORDER
BY _____ DEPUTY