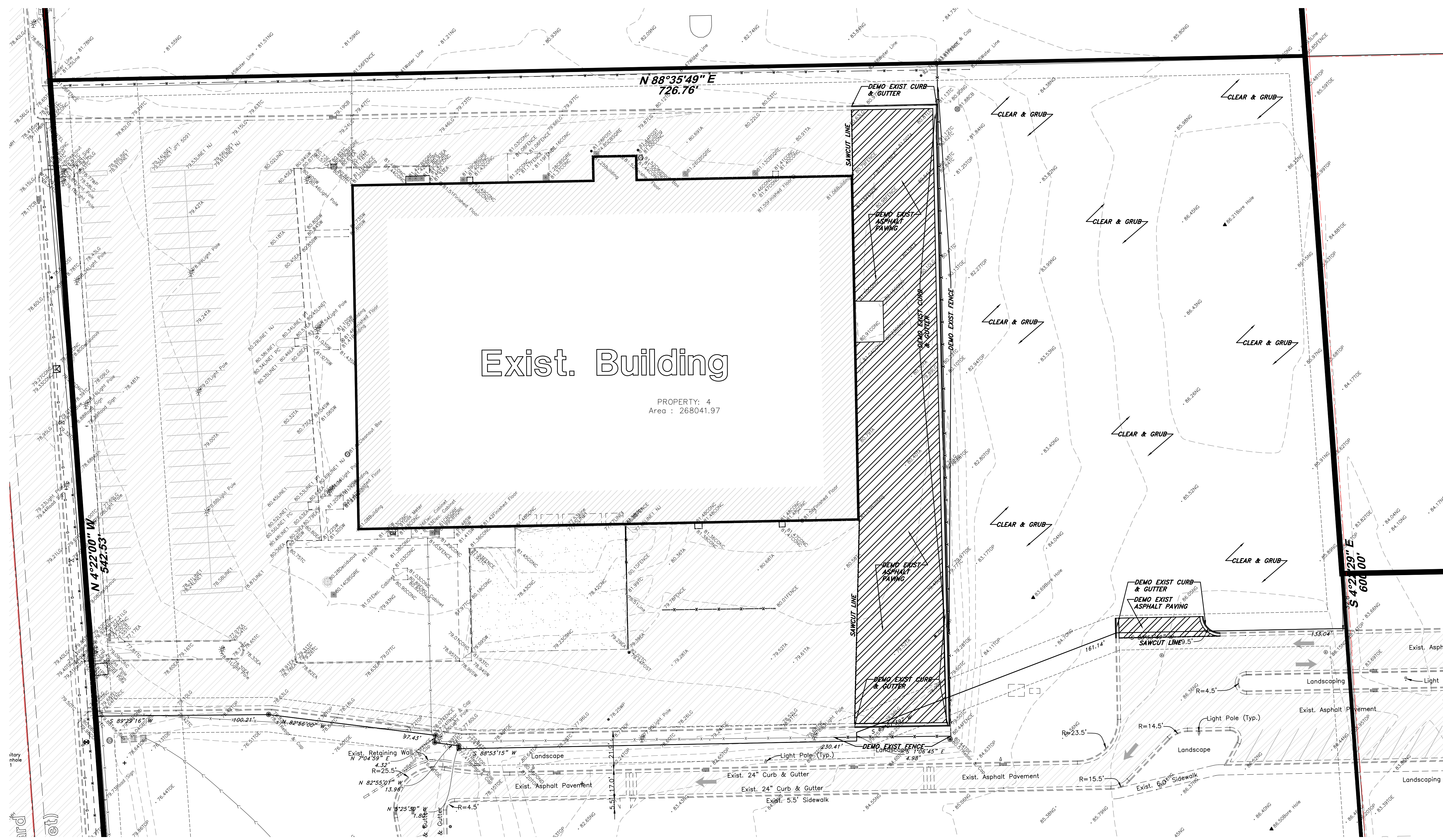
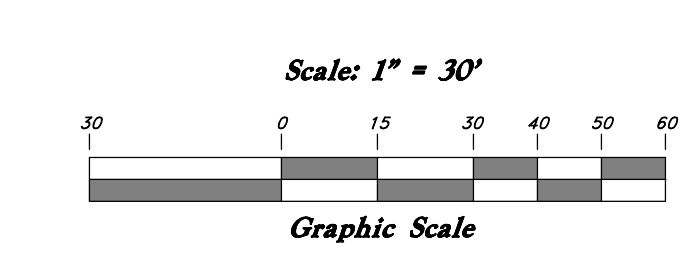


### Legend

- (Note: All items may not appear on drawing)
- Sewer Manhole
  - Water Manhole
  - Storm Drain Manhole
  - Cleanout
  - Electrical Manhole
  - Catch Basins
  - Exst. Fire Hydrant
  - Exst. Water Valve
  - Water Valve
  - Cooling Water
  - Gas Line
  - Irrigation Line
  - Storm Drain
  - Telephone Line
  - Secondary Waterline
  - Power Line
  - Traffic Line
  - Light Pole
  - Power pole w/spur
  - Light Pole
  - Fence
  - Flowline of ditch
  - Overhead Power line
  - Corrugated Metal Pipe
  - Concrete Pipe
  - Reinforced Concrete Pipe
  - Basalt Pipe
  - Plastic Pipe
  - Top of Asphalt
  - Edge of Asphalt
  - Centerline
  - Finish
  - Finish Floor
  - Top of Curb
  - Top of Wall
  - Top of Walk
  - Top of Concrete
  - Natural Ground
  - Finish Grade
  - Match Existing
  - Time Department Connection
  - Finish Contour
  - Exst. Garbur
  - Finish Grade
  - Scale Grade
  - Ridge Line
  - Direction of Flow
- 
- Existing Asphalt
  - New Asphalt
  - Heavy Duty Asphalt
  - Existing Concrete
  - New Concrete
  - Spill Curb & Gutter
  - Demo Tree



- GENERAL DEMOLITION NOTES:**
- Demolition and site clearing for this contract are to include all areas shown within demolition limits or by note.
  - Refer to site improvement plans for more details on limits of removal.
  - Demolish existing buildings and clear from site. (Including removal of all footings and foundations.)
  - All curbs, gutters, walks, slabs, walls, fences, flatwork, asphalt, waterlines and meters, gas lines, sewer lines, light poles, buried cables, storm drain piping and structures to be cleared from site unless otherwise shown.
  - All utilities, sewer, water, gas, telephone and electrical services to be disconnected and capped according to city, county and utility company requirements, unless otherwise shown.
  - Basements and other excavated areas to be backfilled with clean granular material compacted to 90% of maximum lab density as determined by ASTM D 1557-78. (Test results to be given to owner)
  - Clear and grub trees, shrubs, and vegetation within construction limits, disposal to be off-site except where noted otherwise.
  - DO NOT interrupt any services or disrupt the operation of any businesses shown outside the demolition limits.
  - If ASBESTOS is found in existing structures, the Asbestos must be removed in a legal manner by a contractor licensed to handle asbestos materials. (Not a part of contract)
  - Remove debris, rubble, and other materials resulting from the demolition and site clearing operations from the site and dispose of in a legal manner.
  - The location and/or elevation of existing utilities as shown on these plans is based on records of the various utility companies and, where possible, measurements taken in the field. The information is not to be relied upon as being exact or complete. Contractor shall contact authorities having jurisdiction for field locations. Contractor shall be responsible for protection of in place and relocated utilities during construction.
  - Stockpiles shall be graded to maintain slopes not greater than 3' horizontal to 1' vertical. Provide erosion control as needed to prevent sediment transport to adjacent drainage ways.
  - Contractor shall be responsible for disposal of all waste material. Disposal shall be at an approved site for such material. Burning onsite is not permitted.
  - Contractor shall verify with city any street removal, curb cuts, and any restoration required for utility line removal.
  - Install traffic warning devices as needed in accordance with local standards.
  - Contractor shall obtain all permits necessary for demolition from City, County, State or Federal Agencies as required.

**CAUTION NOTICE TO CONTRACTOR**  
 The contractor is specifically cautioned that the location and/or elevation of existing utilities as shown on these plans are based on records of the various utility companies and, where possible, measurements taken in the field. The information is not to be relied on as being exact or complete. The contractor must call the appropriate utility company at least 48 hours before any excavation to request exact field location of utilities. It shall be the responsibility of the contractor to relocate all existing utilities which conflict with the proposed improvements shown on the plans.

**PRIVATE ENGINEER'S NOTICE TO CONTRACTORS**  
 The Contractor agrees that he shall assume sole and complete responsibility for job site conditions during the course of construction of this project, including safety of all persons and property; that this requirement shall apply continuously and not be limited to normal working hours; and that the contractor shall defend, indemnify, and hold the owner and the engineer harmless from any and all liability, real or alleged, in connection with the performance of work on this project, excepting for liability arising from the sole negligence of the owner or the engineer.

ALL CONSTRUCTION TO CONFORM TO CITY STANDARDS AND SPECIFICATIONS IN RIGHT OF WAY

1144 E 2800 N  
 OGDEN, UT 84414  
 contact:  
 p: 801.644.4926  
 e: info@developarchitects.com  
 web: www.developarchitects.com

DEVELOP ARCHITECTS, LLC

PROJECT TITLE  
**GVH DISTRIBUTION**  
 2468 N RULON WHITE BLVD  
 OGDEN, UTAH 84404

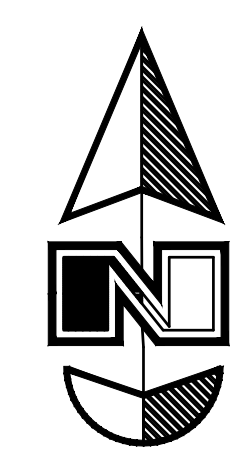
DOCUMENT DATE:  
 April 10, 2020

PROJECT PHASE  
 CONSTRUCTION

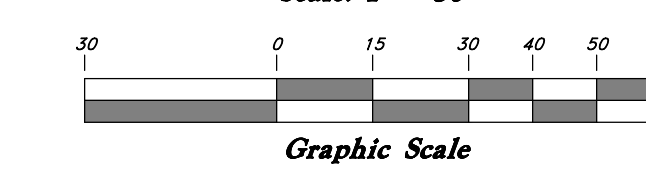
REVISIONS  
 # Description Date

DRAWING DESCRIPTION  
 DEMOLITION  
 PLAN

**C0.0**  
 SHEET NUMBER

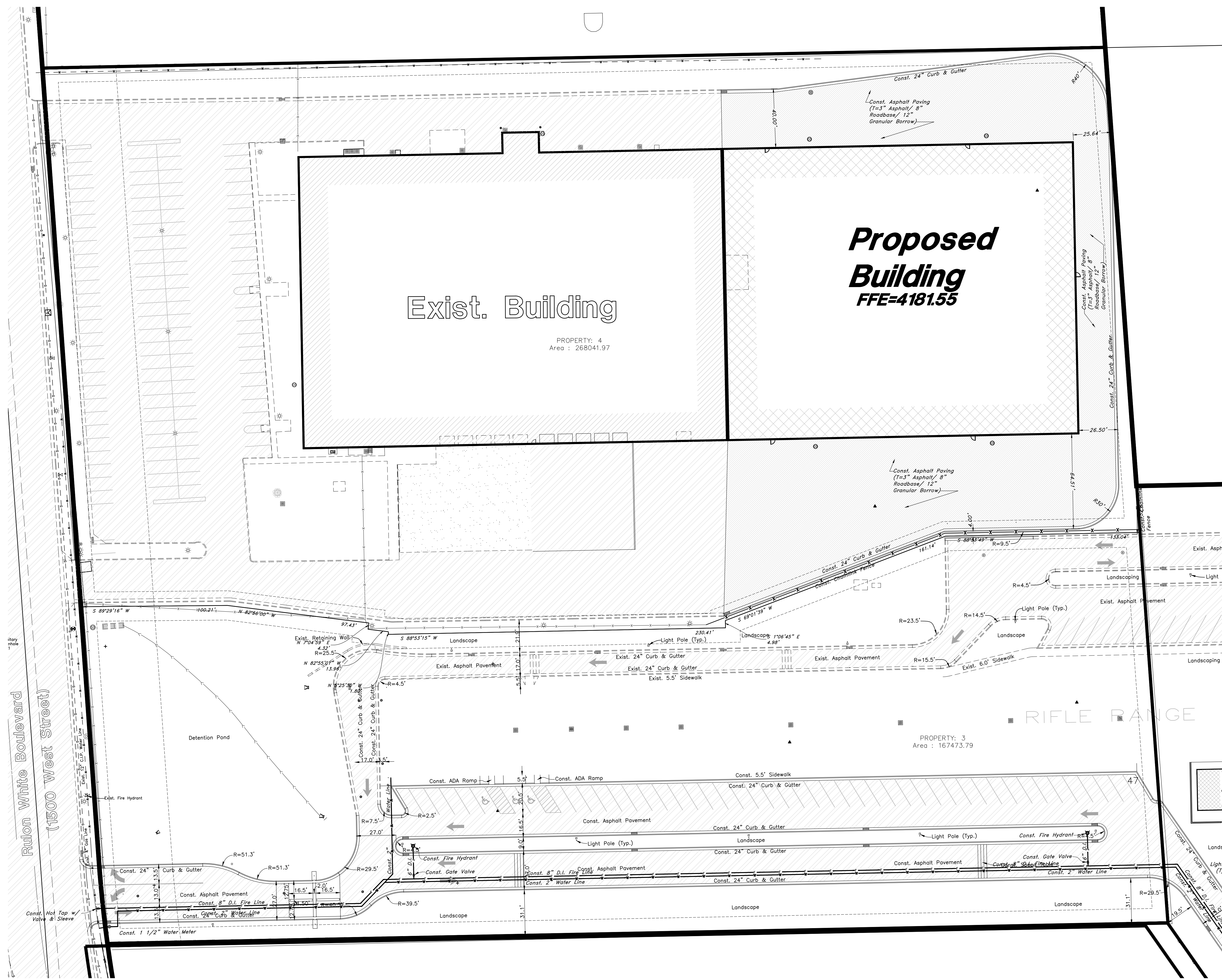


Scale: 1" = 30'



### Legend

- (Note: All items may not appear on drawing)
- San. Sewer Manhole
  - Water Manhole
  - Storm Drain Manhole
  - Cleanout
  - Electrical Manhole
  - Catch Basins
  - Exist. Fire Hydrant
  - Fire Hydrant
  - Exist. Water Valve
  - Water Valve
  - Sanitary Sewer
  - Culinary Water
  - Gas Line
  - Irrigation Line
  - Storm Drain
  - Telephone Line
  - Secondary Waterline
  - Power Line
  - Fire Line
  - Low Voltage
  - Power pole w/ guy
  - Light Pole
  - Sign
  - Flowline of ditch
  - Overhead Power line
  - Corrugated Metal Pipe
  - Concrete Pipe
  - Reinforced Concrete Pipe
  - Ductile Iron
  - Polyvinyl Chloride
  - Top of Asphalt
  - Edge of Asphalt
  - Centerline
  - Flowline
  - Finish Floor
  - Top of Curb
  - Top of Wall
  - Top of Mass
  - Top of Concrete
  - Natural Ground
  - Finish grade
  - Match Existing
  - Fire Department Connection
  - Finish Contour
  - Exist. Contour
  - Finish Grade
  - Exist. Grade
  - Ridge Line
  - Direction of Flow
- Existing Asphalt
- New Asphalt
- Heavy Duty Asphalt
- Existing Concrete
- New Concrete
- Spill Curb & Gutter
- Demo Tree



- GENERAL SITE NOTES:**
1. Stalls designated as accessible will require a pointed accessible symbol and sign. (See Details)
  2. Fire line markings and signs to be installed as directed by the Fire Marshall.
  3. Aisle markings, directional arrows and stop bars will be pointed at each driveway as shown on the plans.
  4. Building sidewalks, ramps, and bollards are building contractor responsible items. See architectural plans.
  5. All dimensions are to back of curb unless otherwise noted.

**PRIVATE ENGINEER'S NOTICE TO CONTRACTORS**

The Contractor agrees that he shall assume sole and complete responsibility for job site conditions during the course of construction of this project, including safety of all persons and property; that this requirement shall apply continuously and not be limited to normal working hours; and that the contractor shall defend, indemnify, and hold the owner and the engineer harmless from any and all liability, real or alleged, in connection with the performance of work on this project, excepting for liability arising from the sole negligence of the owner or the engineer.

ALL CONSTRUCTION TO CONFORM TO CITY STANDARDS AND SPECIFICATIONS IN RIGHT OF WAY

1144 E 2800 N  
 OGDEN, UT 84414

contact:  
 p: 801.644.4926  
 e: info@developarchitects.com  
 web: www.developarchitects.com

DEVELOP ARCHITECTS, LLC

PROJECT TITLE  
**GVH DISTRIBUTION**  
 2468 N RULON WHITE BLVD  
 OGDEN, UTAH 84404

OWNER:

DOCUMENT DATE:  
 April 10, 2020

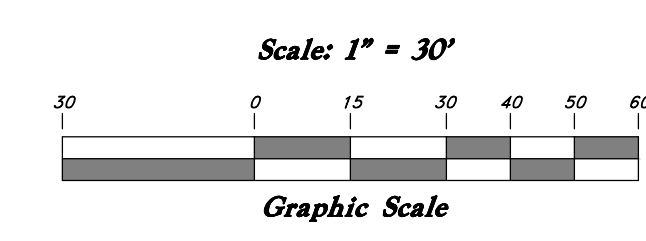
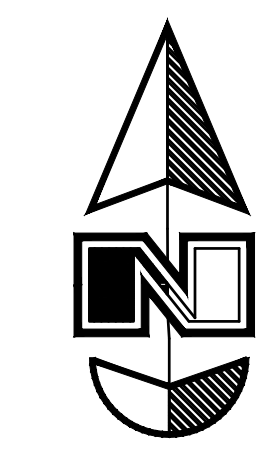
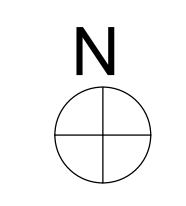
PROJECT PHASE  
 CONSTRUCTION

REVISIONS  
 # Description Date

DRAWING DESCRIPTION  
 SITE PLAN

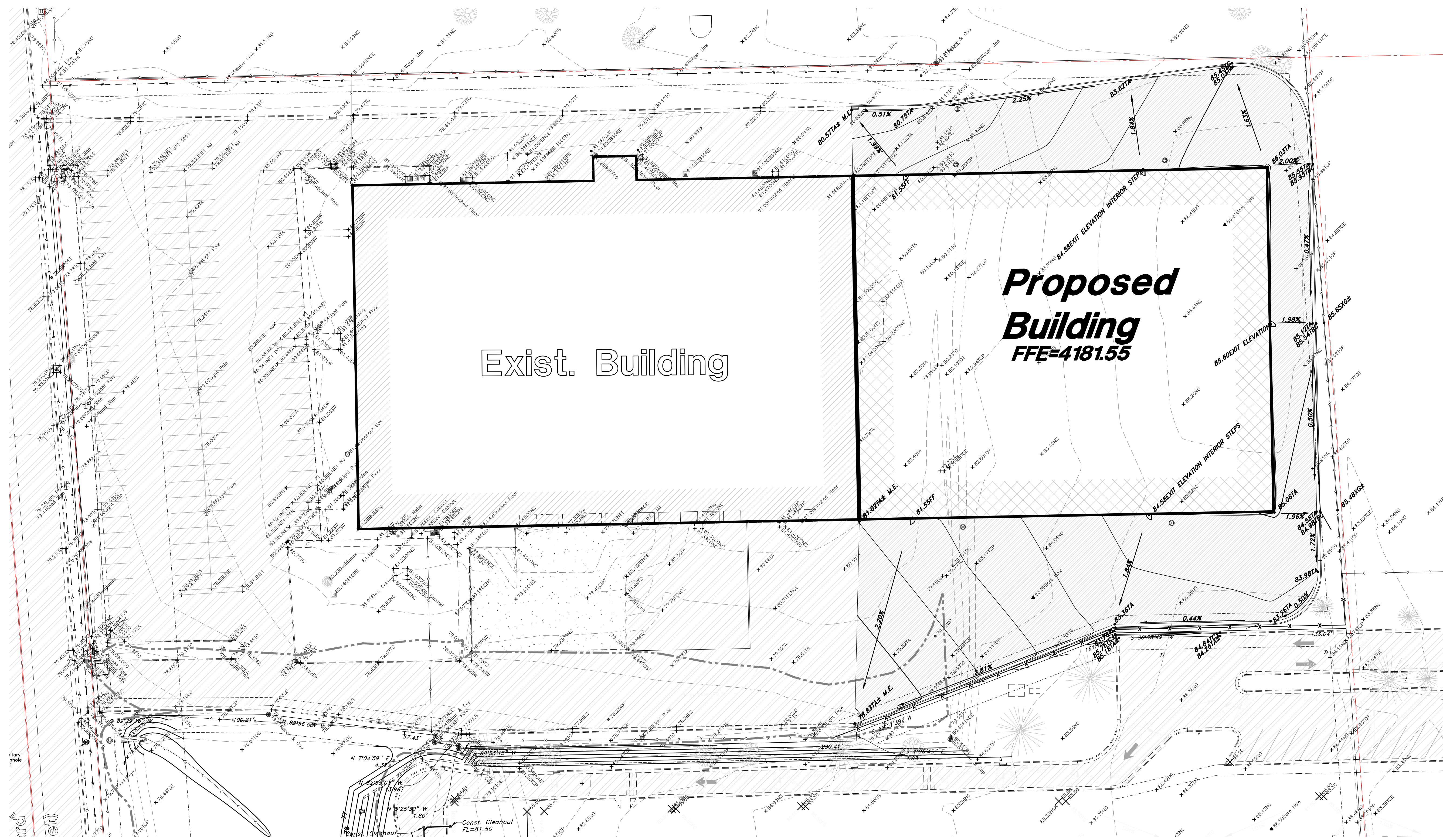
C1.0

SHEET NUMBER



### Legend

- (Note: All items may not appear on drawing)
- San. Sewer Manhole
  - Water Manhole
  - Storm Drain Manhole
  - Cleanout
  - Electrical Manhole
  - Catch Basins
  - Exit, Fire Hydrant
  - Fire Hydrant
  - Exit, Water Valve
  - Water Valve
  - Sanitary Sewer
  - Galvanneal Water
  - Gas Line
  - Drainage Line
  - Storm Drain
  - Telephone Line
  - Secondary Waterline
  - Power Line
  - Fire Line
  - Land Drain
  - Power pole w/guy
  - Light Pole
  - Fence
  - Overhead Power Line
  - Corrugated Metal Pipe
  - Concrete Pipe
  - Reinforced Concrete Pipe
  - Ductile Iron
  - Polyvinyl Chloride
  - Top of Asphalt
  - Edge of Asphalt
  - Centerline
  - Finish Floor
  - Top of Curb
  - Top of Walk
  - Top of Concrete
  - Natural Ground
  - Finish Grade
  - Mark Existing
  - Fire Department Connection FDC
  - Drain Connector
  - Finish Grade
  - EXIST. Grade
  - Ridge Line
  - Direction of Flow
- Existing Asphalt
  - New Asphalt
  - Heavy Duty Asphalt
  - Existing Concrete
  - New Concrete
  - Spill Curb & Gutter
  - Demol Tree



- GENERAL GRADING NOTES:**
- All work shall be in accordance with the City Public Works Standard.
  - Cut slopes shall be no steeper than 2 horizontal to 1 vertical.
  - Fill slopes shall be no steeper than 2 horizontal to 1 vertical.
  - Fills shall be compacted per the recommendations of the geotechnical report prepared for the project and shall be certified by the geotechnical engineer.
  - Areas to receive fill shall be properly prepared and approved by the City Inspector and geotechnical Engineer prior to placing fill.
  - Fills shall be benched into competent material as per specifications and geotechnical report.
  - All trench backfill shall be tested and certified by the site geotechnical engineer per the grading code.
  - A geotechnical engineer shall perform periodic inspections and submit a complete report and map upon completion of the rough grading.
  - The final composition report and certification of the geotechnical engineer shall contain the type of field testing performed. Each test shall be identified with the method of obtaining the in-place density, whether sand cone or drive ring and shall be so noted for each test. Sufficient maximum density determinations shall be performed to verify the accuracy of the maximum density curves used by the field technician.
  - Soil shall be controlled by watering.
  - The location and protection of all utilities is the responsibility of the permittee.
  - Approved protective measures and temporary drainage provisions must be used to protect adjoining properties during the grading project.
  - All public roadways must be cleared daily of all dirt, mud and debris deposited on them as a result of the grading operation. Cleaning is to be done to the satisfaction of the City engineer.
  - The site shall be cleared and grubbed of all vegetation and deleterious matter prior to grading.
  - The contractor shall provide shoring in accordance with OSHA requirements for trench walls.
  - Aggregate base shall be compacted per the geotechnical report prepared for the project.
  - Elevations shown on this plan are final grades. Rough grades are the subgrades of the improvements shown herein.
  - The recommendations in the following Geotechnical Engineering Report by xxxx are included in the requirements of grading and site preparation. The report is titled "GEO-TECHNICAL INVESTIGATION" Address Job No. Dated: \_\_\_\_\_
  - As part of the construction documents, owner has provided contractor with a topographic survey performed by manual or aerial means. Such survey was prepared for project design purposes and is provided to the contractor as a courtesy. It is expressly understood that such survey may not accurately reflect existing topographic conditions.
  - Erosion Control: Protect all inlet boxes, catch basins, etc. with straw bales or other approved method to retain the storm water during construction. Protect surrounding properties and streets from site runoff with sandbags and earth berms.
- CURB AND GUTTER CONSTRUCTION NOTES:**
- Open face gutter shall be constructed where drainage is directed away from curb.
  - Open face gutter locations are indicated by shading and notes on site and grading plan.
  - It is the responsibility of the surveyor to adjust top of curb grades at the time construction staking.
  - Refer to the typical details for a standard and open face curb and gutter for dimensions.
  - Transitions between open face and standard curb and gutter are to be smooth. Hand form these areas if necessary.
- ADA NOTES:**
- Contractor must maintain a running slope on Accessible routes no steeper than 5:08 (1:20). The cross slope for Accessible routes must be no steeper than 2:08 (1:50). All Accessible routes must have a minimum clear width of 36". If grades on plans do not meet this requirement notify Consultants immediately.
- The Client, Contractor, and Subcontractor should immediately notify the Consultant of any conditions of the project that they believe do not comply with the current state of the ADA and/or FADA.
- PRIVATE ENGINEER'S NOTICE TO CONTRACTORS**
- The Contractor agrees that he shall assume sole and complete responsibility for job site conditions during the course of construction of this project, including safety of all persons and property; that this requirement shall apply continuously and not be limited to normal working hours; and that the contractor shall defend, indemnify, and hold the owner and the engineer harmless from any and all liability, real or alleged, in connection with the performance of work on this project, excepting for liability arising from the sole negligence of the owner or the engineer.

1144 E 2800 N  
 OGDEN, UT 84414

contact:  
 p: 801.644.4926  
 e: info@developarchitects.com  
 web: www.developarchitects.com

DEVELOP ARCHITECTS, LLC

PROJECT TITLE  
**GVH DISTRIBUTION**  
 2468 N RULON WHITE BLVD  
 OGDEN, UTAH 84404

OWNER:

DOCUMENT DATE:  
 April 10, 2020

PROJECT PHASE  
 CONSTRUCTION

REVISIONS  
 # Description Date

DRAWING DESCRIPTION  
 GRADING &  
 DRAINAGE  
 PLAN

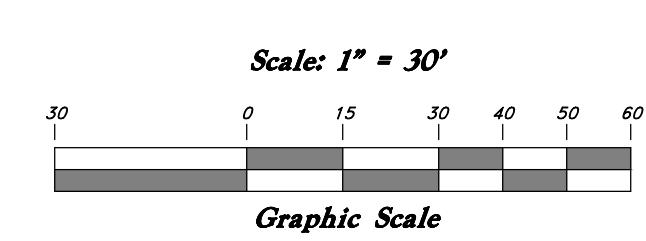
**C2.0**  
 SHEET NUMBER

ALL CONSTRUCTION TO CONFORM TO CITY STANDARDS AND SPECIFICATIONS IN RIGHT OF WAY

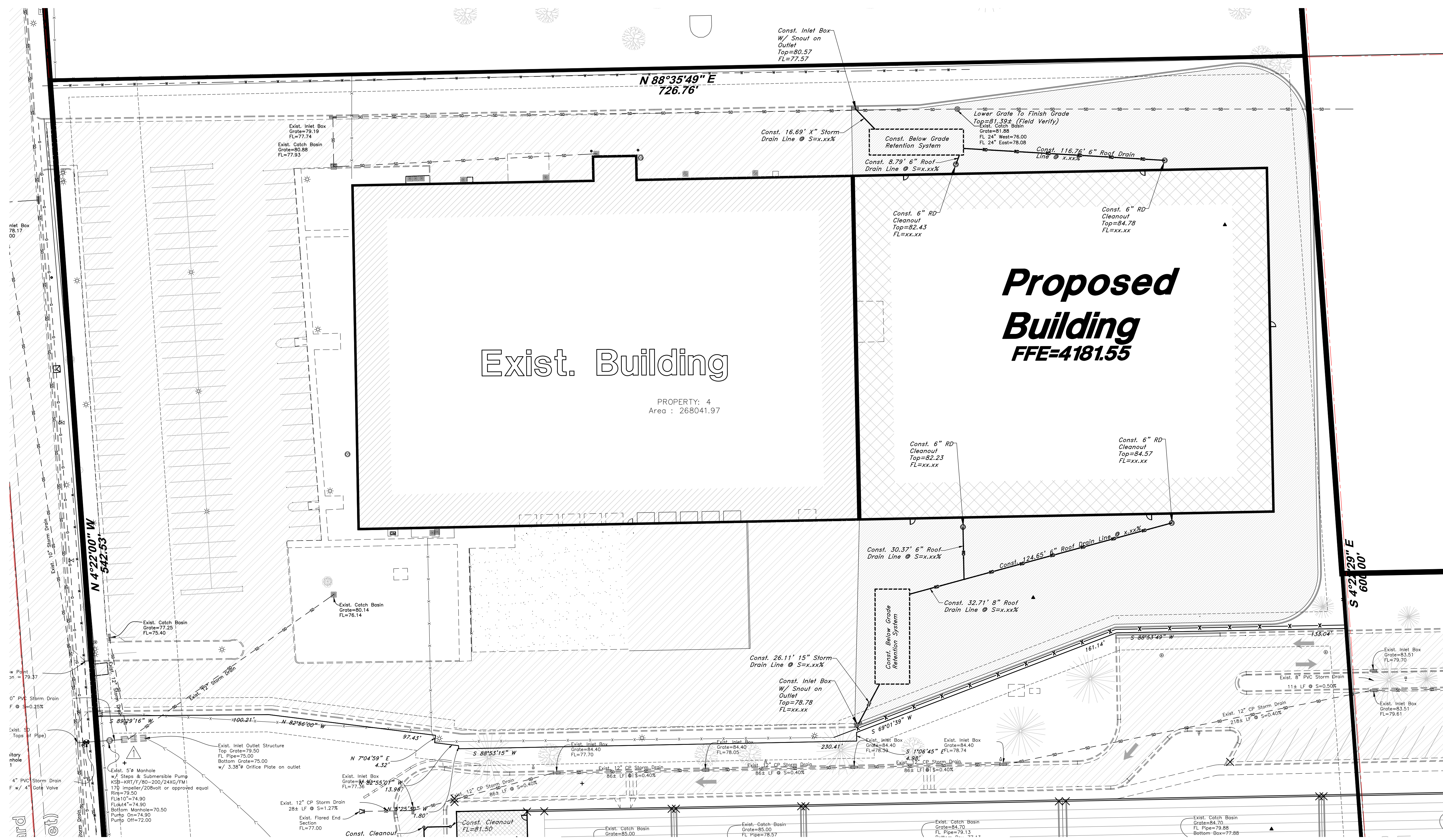


### Legend

- (Note: In terms of size, 1" = 30')
- San. Sewer Manhole
  - Water Manhole
  - Storm Drain Manhole
  - Cleanout
  - Electrical Manhole
  - Catch Basins
  - Exst. Fire Hydrant
  - Exst. Water Valve
  - Water Valve
  - Sanitary Sewer
  - Culinary Sewer
  - Gas Line
  - Drainage Line
  - Storm Drain
  - Telephone Line
  - Power Line
  - Land Drain
  - Power pole w/guy
  - Light Pole
  - Fence
  - Flowline of ditch
  - Overhead Power Line
  - Corrugated Metal Pipe
  - Concrete Pipe
  - Reinforced Concrete Pipe
  - Asbestos Pipe
  - Polyvinyl Chloride
  - Top of Asphalt
  - Edge of Asphalt
  - Contour
  - Flowline
  - Finish Floor
  - Top of Curb
  - Top of Wall
  - Top of Bank
  - Top of Concrete
  - Bottom of Concrete
  - Finish Grade
  - Minimum Elevation
  - Fire Department Connection
  - Flowline
  - Exst. Contour
  - Finish Grade
  - Edge of Asphalt
  - Edge Line
  - Direction of Flow



- Existing Asphalt
- New Asphalt
- Heavy Duty Asphalt
- Existing Concrete
- New Concrete
- Spill Curb & Gutter
- Demo Tree



- GENERAL UTILITY NOTES:**
- Coordinate all utility connections to building with plumbing plans and building contractor.
  - Verify depth and location of all existing utilities prior to constructing any new utility lines.
  - Notify Civil Engineer of any discrepancies or conflicts prior to any connections being made.
  - All catch basins and inlet box covers are to be bicycle proof.
  - All inlet boxes located in curb and gutter are to be placed parallel to the curb and gutter and set under the frame and grate. Inlets in place boxes are acceptable.
  - Refer to the site electrical plan for details and locations of electrical lines, transformers and light poles.
  - Gas lines, telephone lines, and cable TV lines are not part of these plans unless otherwise noted.
  - Water meters are to be installed per city standards and specifications. It will be the contractor's responsibility to install all items required.
  - Water lines, valves, fire hydrants, fittings, etc. are to be constructed as shown. Contractor is responsible to construct any vertical adjustments necessary to clear sewer, storm drain or other utilities as necessary including valve boxes and hydrant spots to proper grade.
  - Field verify all existing and/or proposed Roof Drain/Root Drain down spout connections to Storm Water System with Civil, Plumbing & Architectural plans. Notify Engineer of any discrepancies.
  - All gravity flow utility lines shall be installed prior to any pressurized utilities unless written permission is obtained from the engineer of record before construction begins.

- UTILITY PIPING MATERIALS:**
- All piping to be installed per manufacturers recommendations. Refer to project specifications for more detailed information regarding materials, installation, etc.
- CULINARY SERVICE LATERALS**
- 3/4" to 2" diameter pipe - copper tube ASTM B, Type K, Soft Temper
  - Over 2" diameter pipe - AWWA C-900 Class 150 pipe

- WATER MAIN LINES AND FIRE LINES**
1. Pipe material as shown on utility plan view or to meet city standards.
- SANITARY SEWER LINES**
1. All sewer piping to be Polyvinyl Chloride (PVC) sewer pipe, ASTM D 3034, Type PSM, SDR 35

- STORM DRAIN LINES**
1. 12" pipes or smaller - Polyvinyl Chloride (PVC) sewer pipe, ASTM D3034, Type PSM, SDR 35
  2. 12" or larger - Reinforced Concrete Pipe, ASTM C76, Class III up to 13" of cover, Class IV for 13" to 21" of cover, Class V for 21" to 32" of cover, and Special Design for cover greater than 32 feet.

- NATURAL GAS SERVICE LATERALS (QUESTAR)**
1. PLASTIC PIPING MATERIALS: Plastic polyethylene pipe materials and compression couplings must be approved for natural gas applications and must be installed underground. All plastic pipe and fittings must conform to ASTM D2513 (40 psi and above high density pipe approved 3408).
  2. Plastic pipe must be joined by individuals qualified in the heat fusion method of connecting pipe and fittings or approved mechanical fittings. A minimum number 18 insulated yellow copper tracer wire shall be installed with underground nonmetallic gas piping and shall terminate above grade at each end. Tracer wire shall not come in contact with plastic piping.
  3. Risers and prefabricated risers inserted with plastic pipe shall conform to ASTM D2513, shall be metallic, have a space of 10 inches from the bottom of the service valve and grade and shall be wrapped or coated to a point at least 6 inches above grade or protected in an approved manner. When a riser connects underground to plastic pipe, the underground horizontal metallic portion of the riser shall extend at least 12 inches before connecting to the plastic pipe by means of an approved transition fitting, adapter or heat fusion.
  4. Plastic pipe used underground for customer fuel lines must be approved polyethylene material and be buried a minimum of 12 inches. It shall not be used inside buildings or above ground. PVC (Polyvinyl Chloride) is not approved for piping systems in Questar Gas's service area. Individual gas lines (metallic or plastic) to single outside appliance (outside lights, grilles, etc.) shall be installed a minimum of 6 inches below grade, provided such installation is approved and installed in locations not susceptible to physical damage.

**CAUTION NOTICE TO CONTRACTOR**

The contractor is specifically cautioned that the location and/or elevation of existing utilities as shown on these plans are based on records of the various utility companies and, where possible, measurements taken in the field. The information is not to be relied on as being exact or complete. The contractor must call the appropriate utility company at least 48 hours before any excavation to request exact field location of utilities. It shall be the responsibility of the contractor to relocate all existing utilities which conflict with the proposed improvements shown on the plans.

**PRIVATE ENGINEER'S NOTICE TO CONTRACTORS**

The Contractor agrees that he shall assume sole and complete responsibility for job site conditions during the course of construction of this project, including safety of all persons and property that may be affected by the construction and shall be held to normal working hours, and that the contractor shall defend, indemnify, and hold the owner and the engineer harmless from any and all liability, real or alleged, in connection with the performance of work on this project, excepting for liability arising from the sole negligence of the owner or the engineer.

ALL CONSTRUCTION TO CONFORM TO CITY STANDARDS AND SPECIFICATIONS IN RIGHT OF WAY

1144 E 2800 N  
OGDEN, UT 84414

contact:  
p: 801.644.4926  
e: info@developarchitects.com  
web: www.developarchitects.com

DEVELOP ARCHITECTS, LLC

PROJECT TITLE  
**GVH DISTRIBUTION**  
2468 N RULON WHITE BLVD  
OGDEN, UTAH 84404

OWNER:

DOCUMENT DATE:  
April 10, 2020

PROJECT PHASE  
CONSTRUCTION

REVISIONS

# Description Date

DRAWING DESCRIPTION  
UTILITY PLAN

**C3.0**  
SHEET NUMBER



1144 E 2800 N  
OGDEN, UT 84414  
contact:  
p: 801.644.4926  
e: info@developarchitects.com  
web: www.developarchitects.com

DEVELOP ARCHITECTS, LLC

PROJECT TITLE  
**GVH DISTRIBUTION**  
2468 N RULON WHITE BLVD  
OGDEN, UTAH 84404  
OWNER:

DOCUMENT DATE:  
April 10, 2020

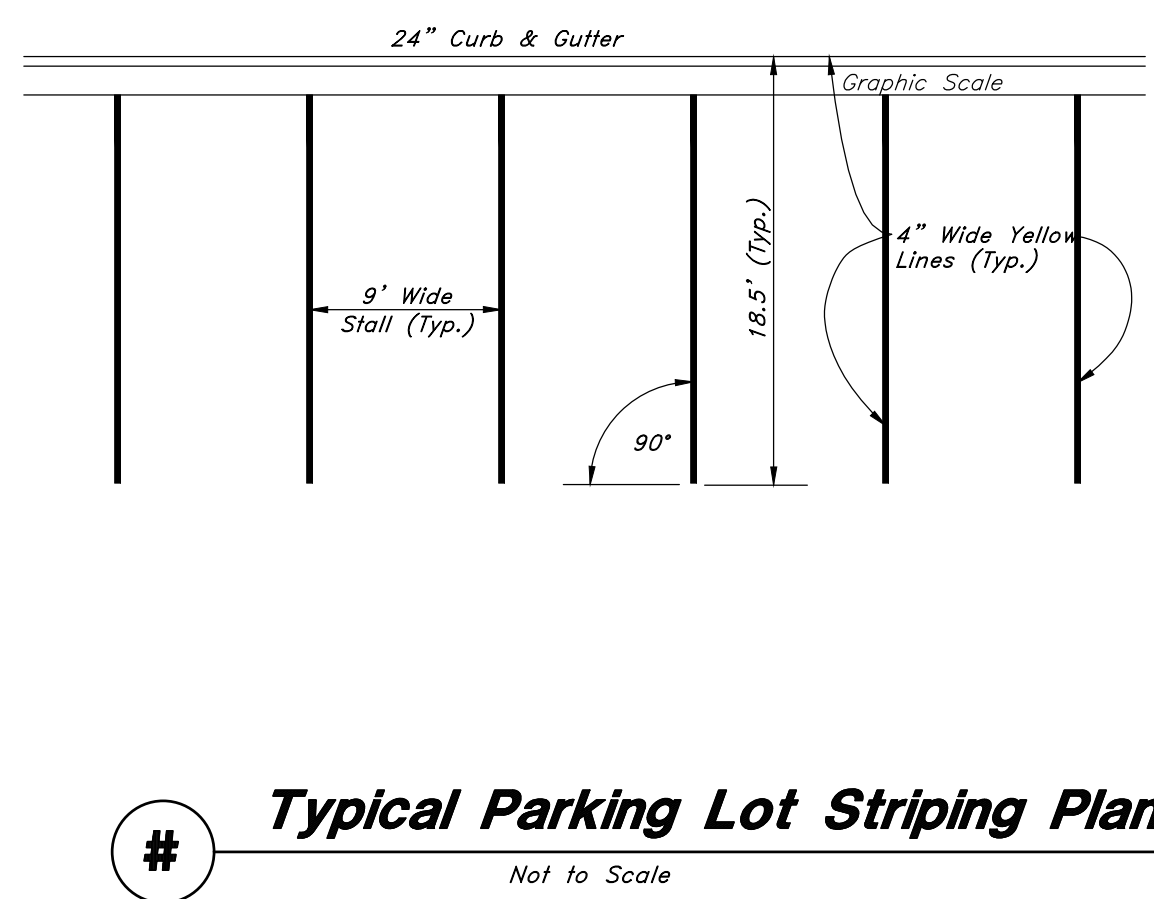
PROJECT PHASE  
CONSTRUCTION

REVISIONS

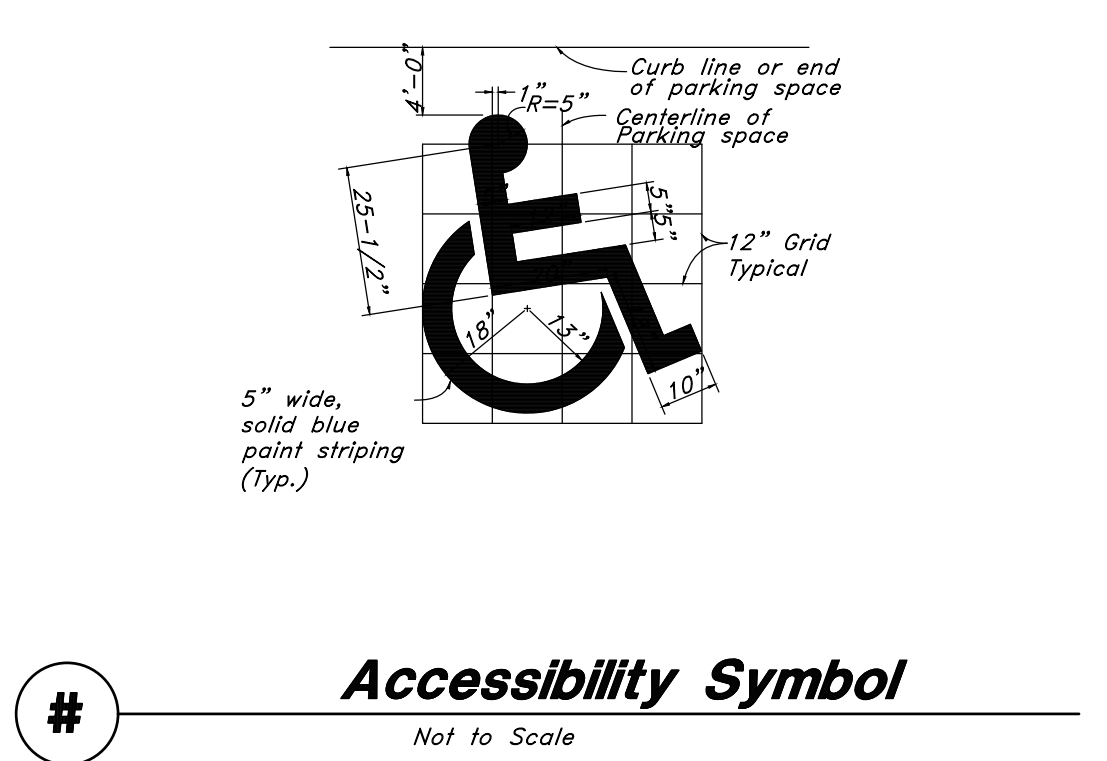
# Description Date

DRAWING DESCRIPTION  
DETAILS

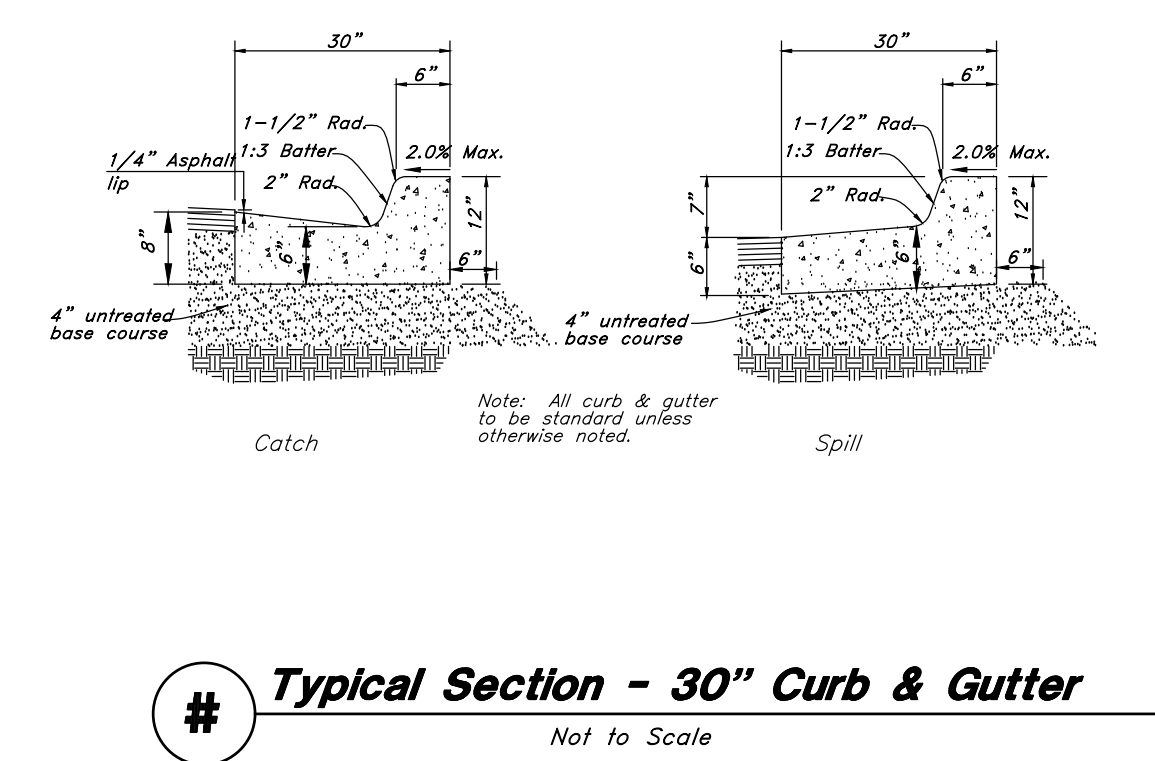
**C4.0**  
SHEET NUMBER



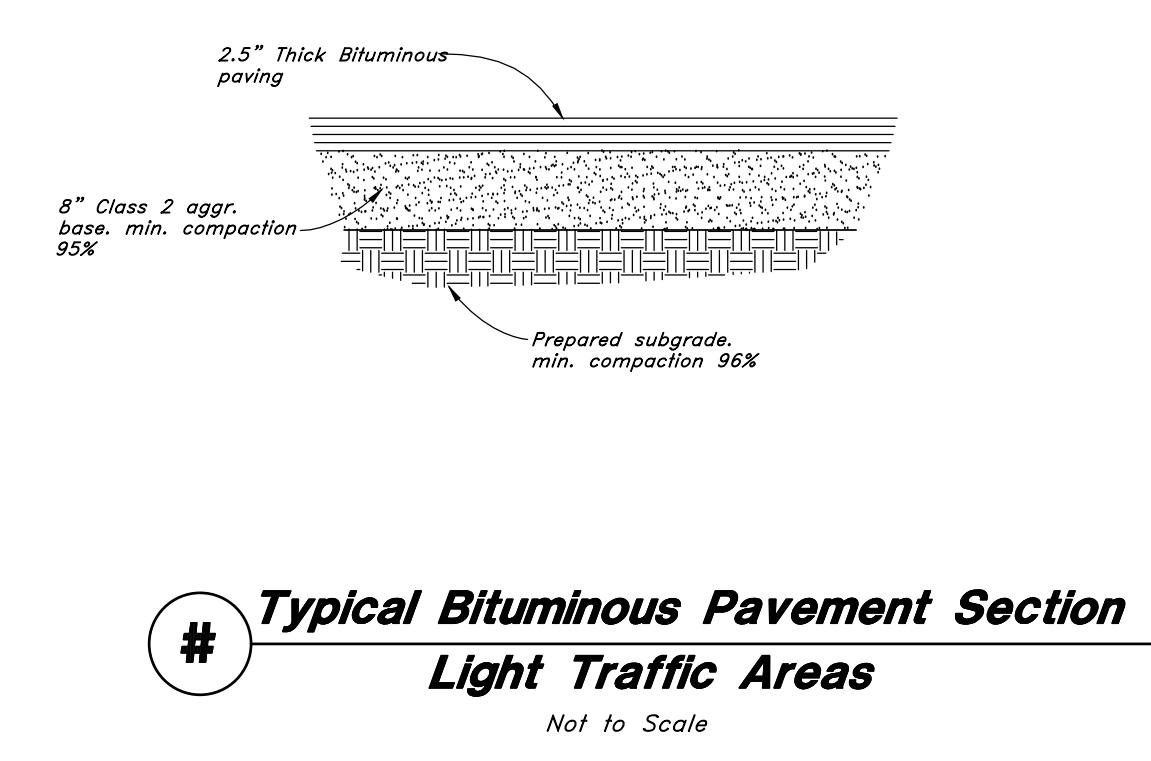
# **Typical Parking Lot Striping Plan**  
Not to Scale



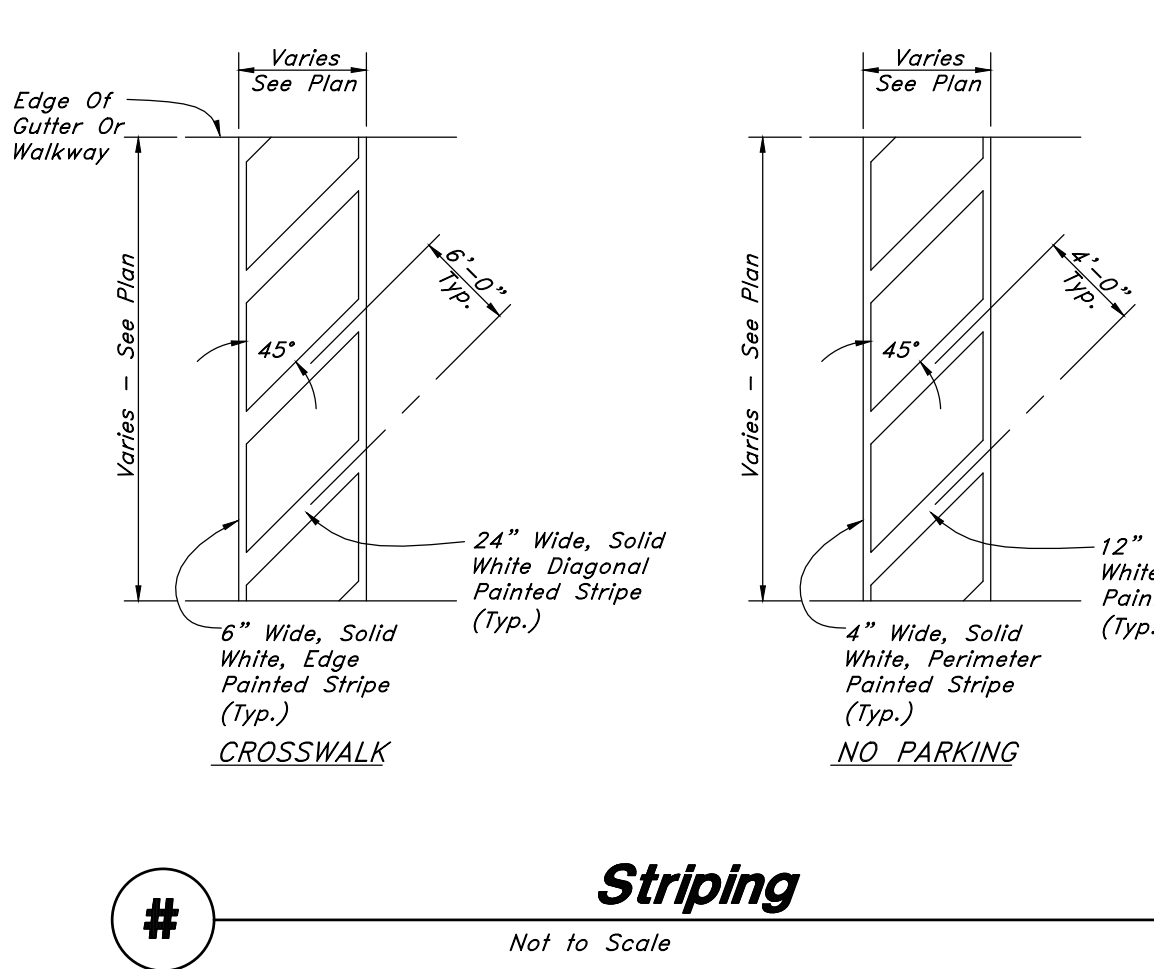
# **Accessibility Symbol**  
Not to Scale



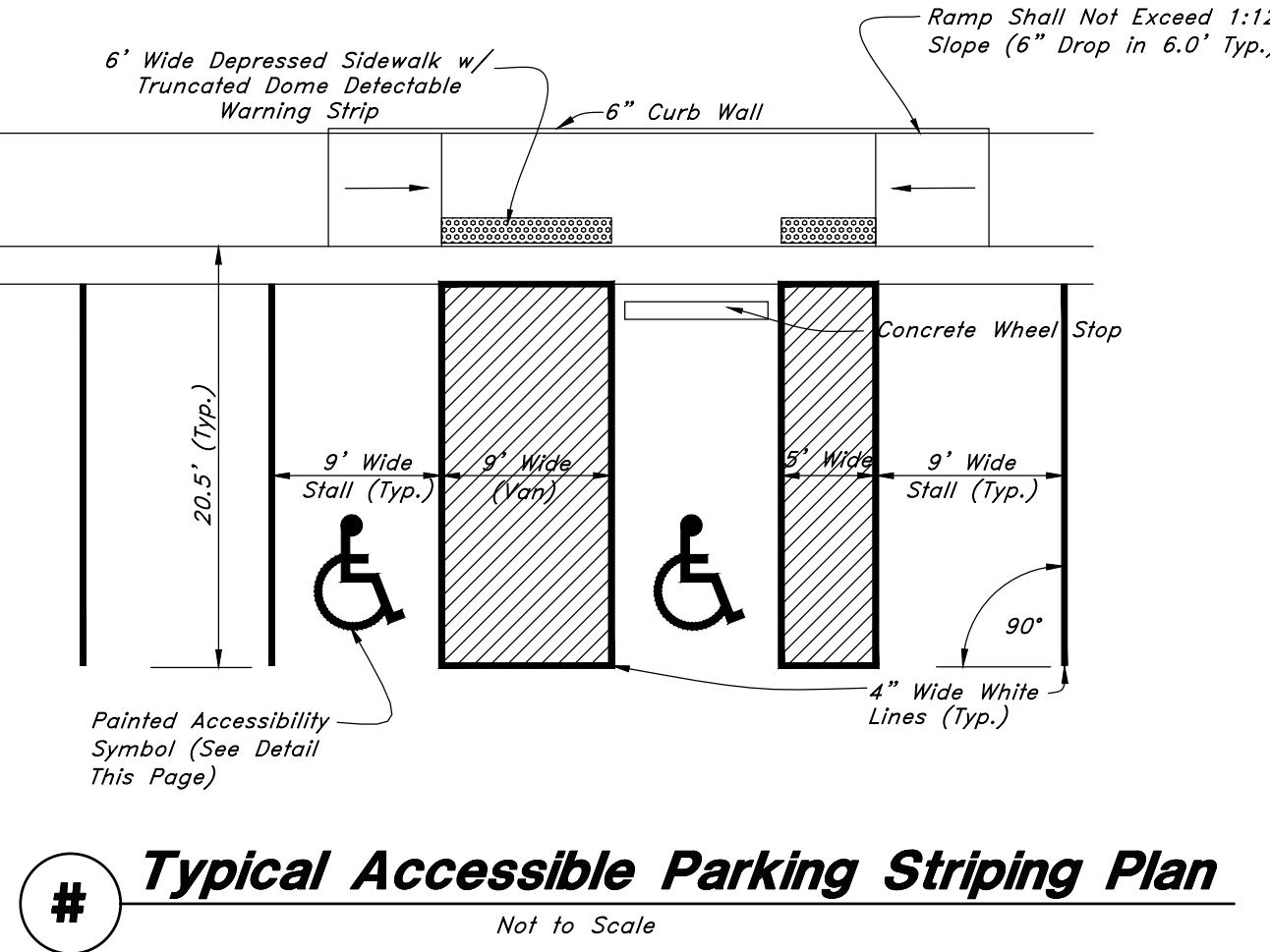
# **Typical Section - 30" Curb & Gutter**  
Not to Scale



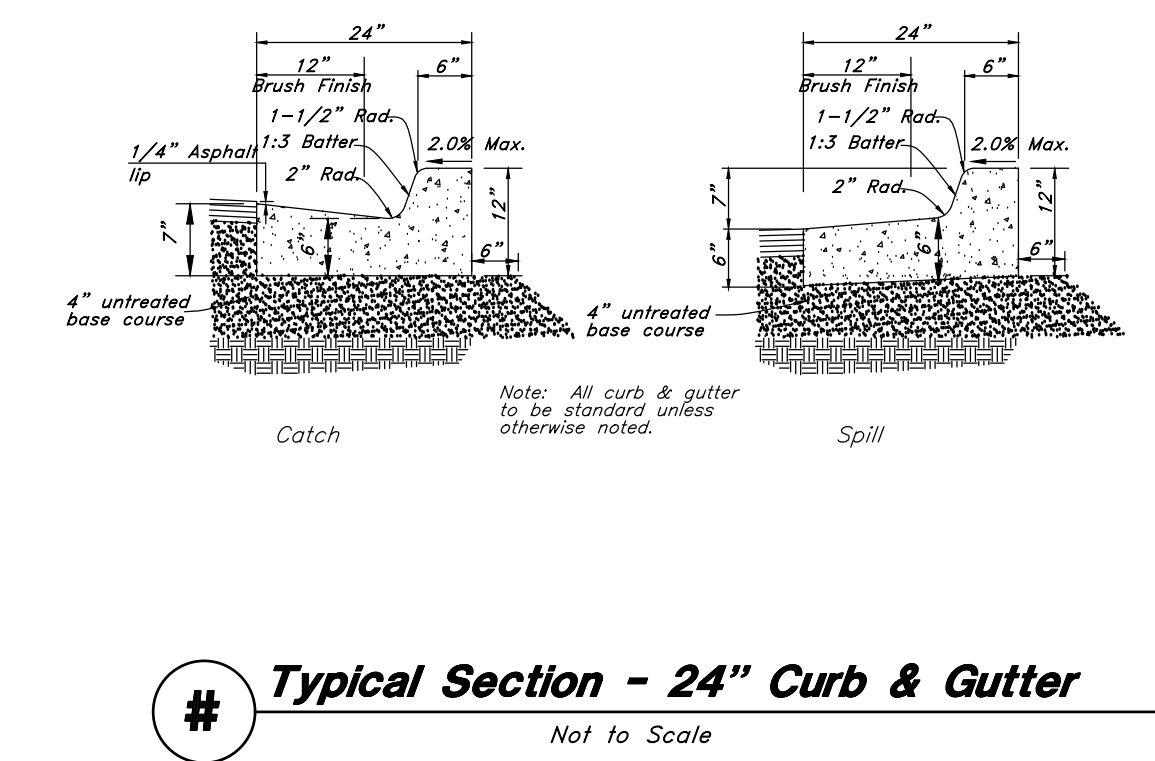
# **Typical Bituminous Pavement Section Light Traffic Areas**  
Not to Scale



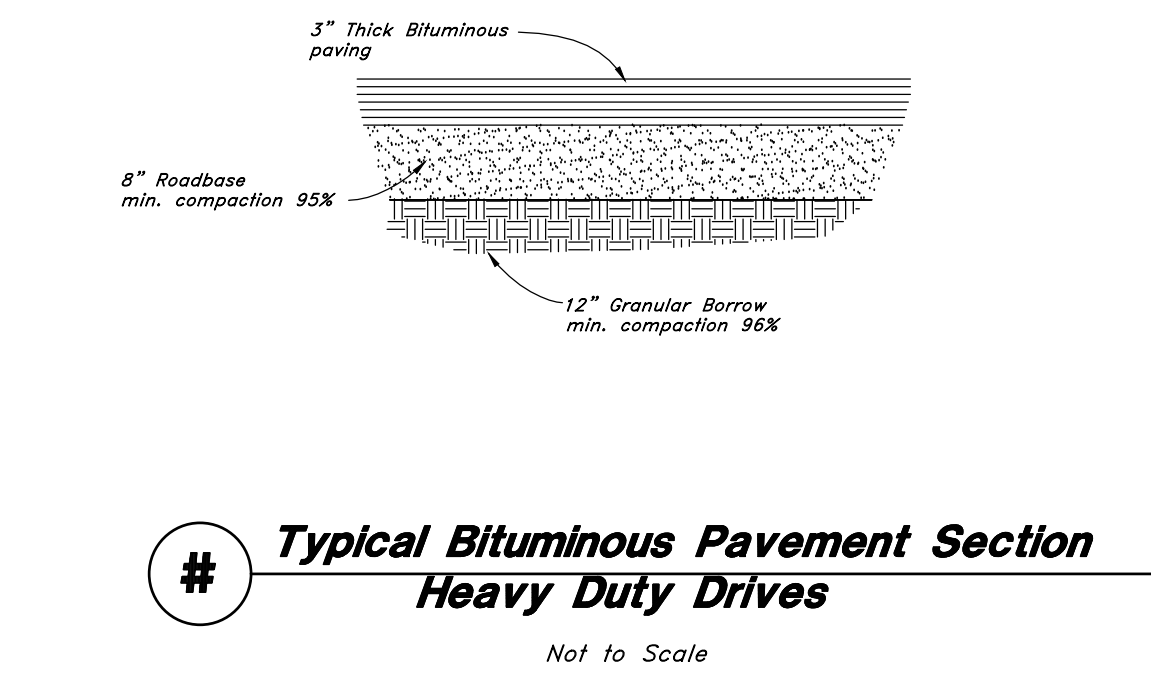
# **Striping**  
Not to Scale



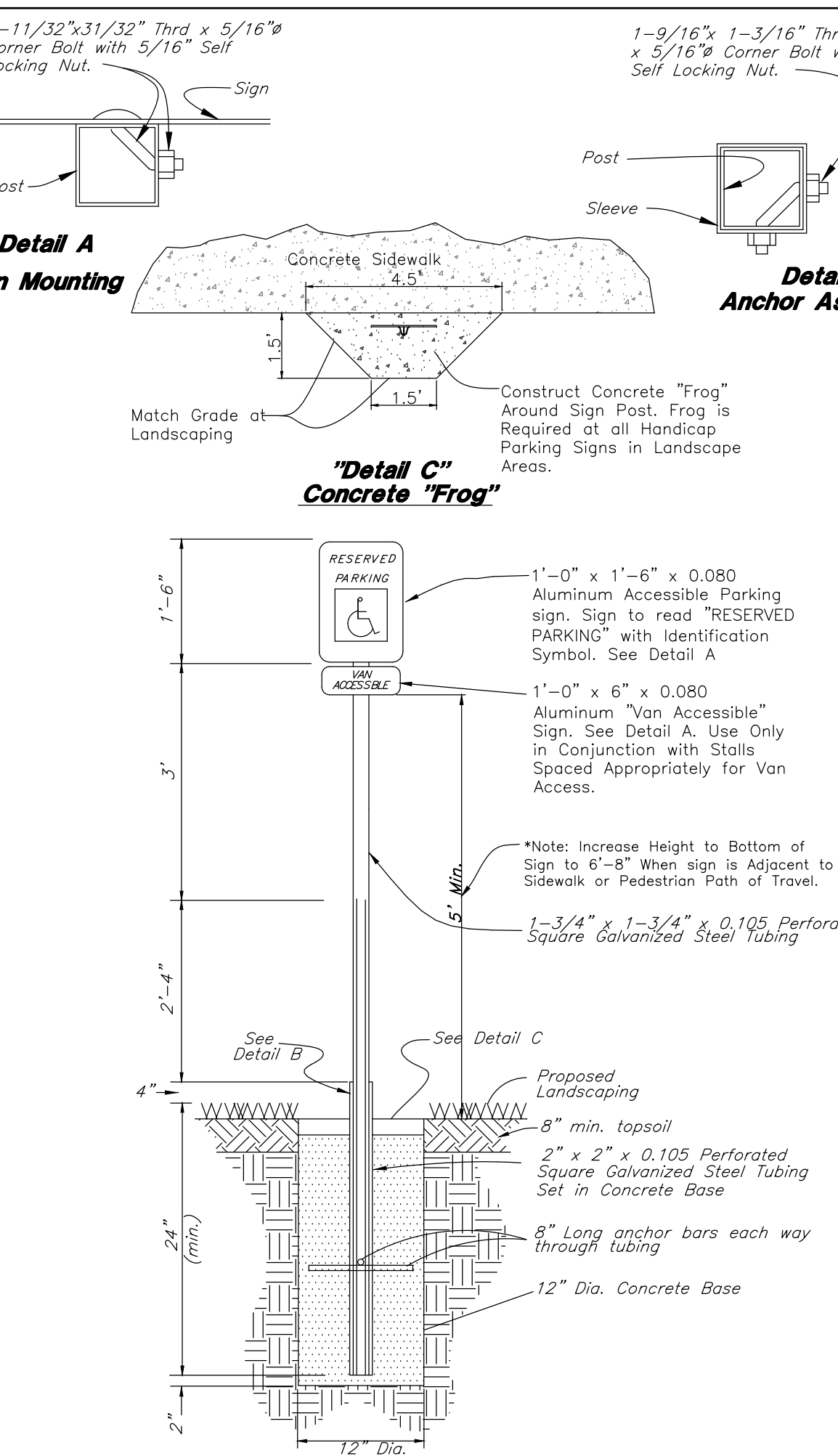
# **Typical Accessible Parking Striping Plan**  
Not to Scale



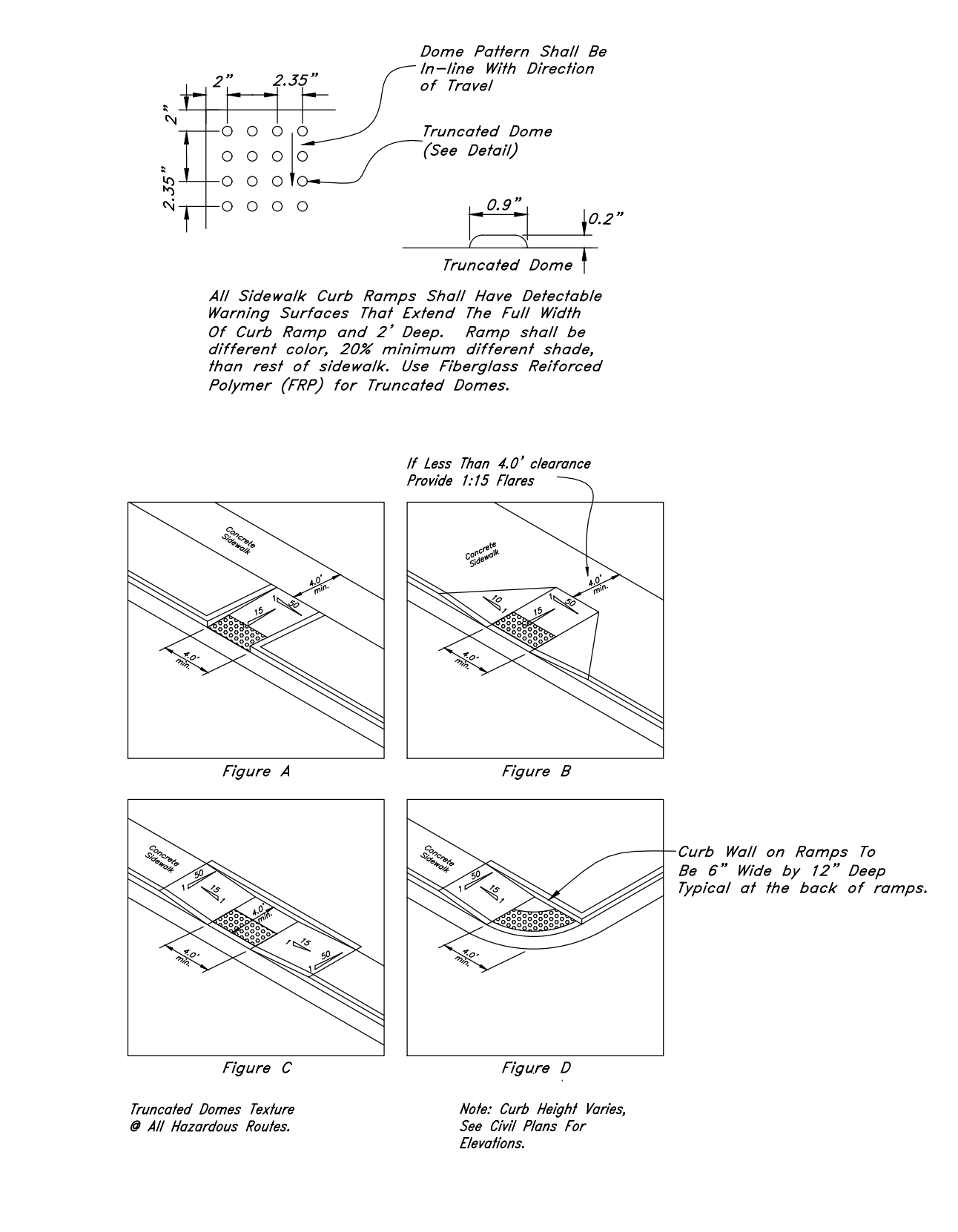
# **Typical Section - 24" Curb & Gutter**  
Not to Scale



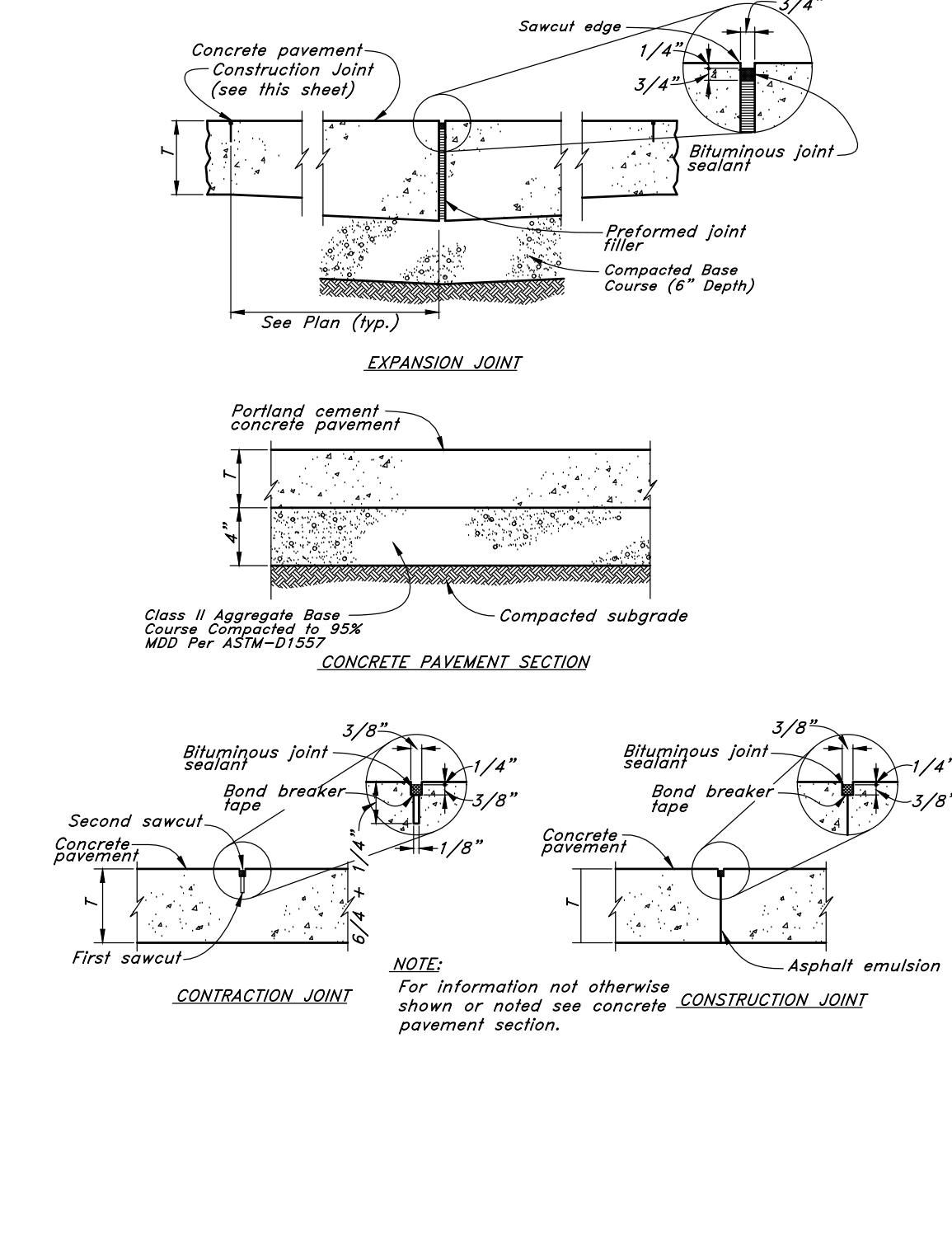
# **Typical Bituminous Pavement Section Heavy Duty Drives**  
Not to Scale



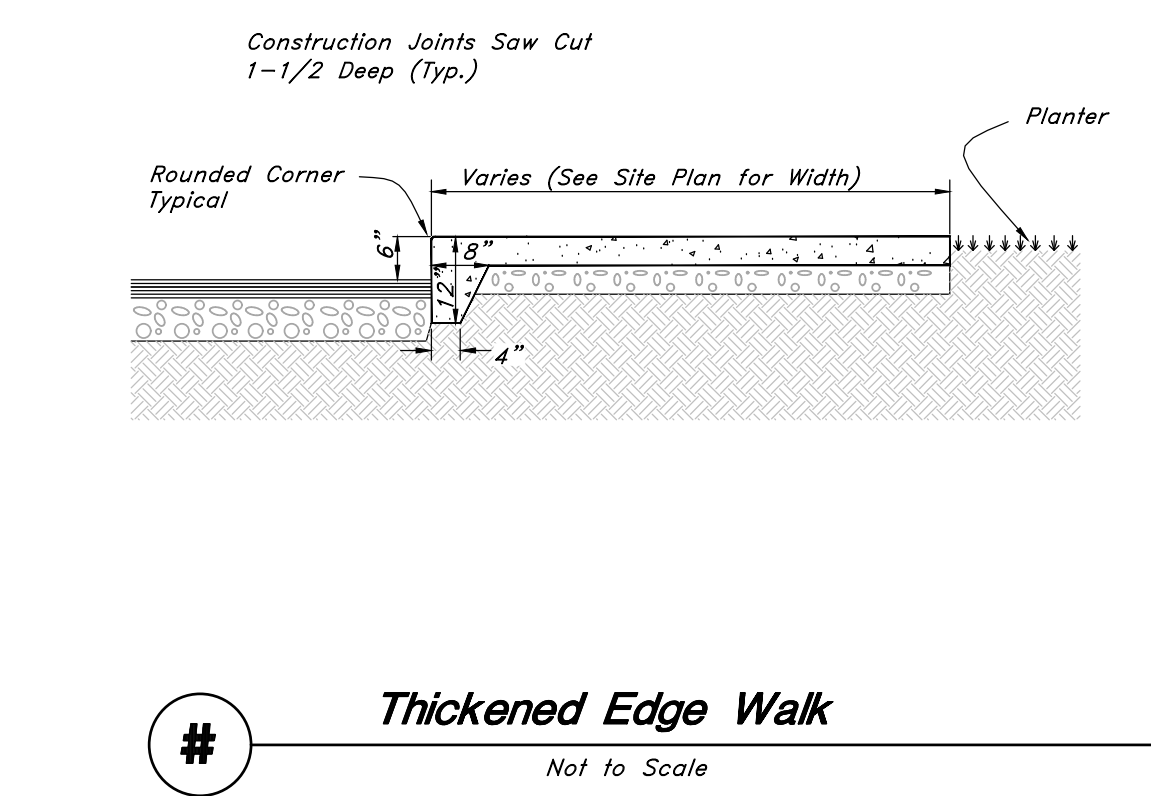
# **Accessible Parking Sign**  
Not to Scale



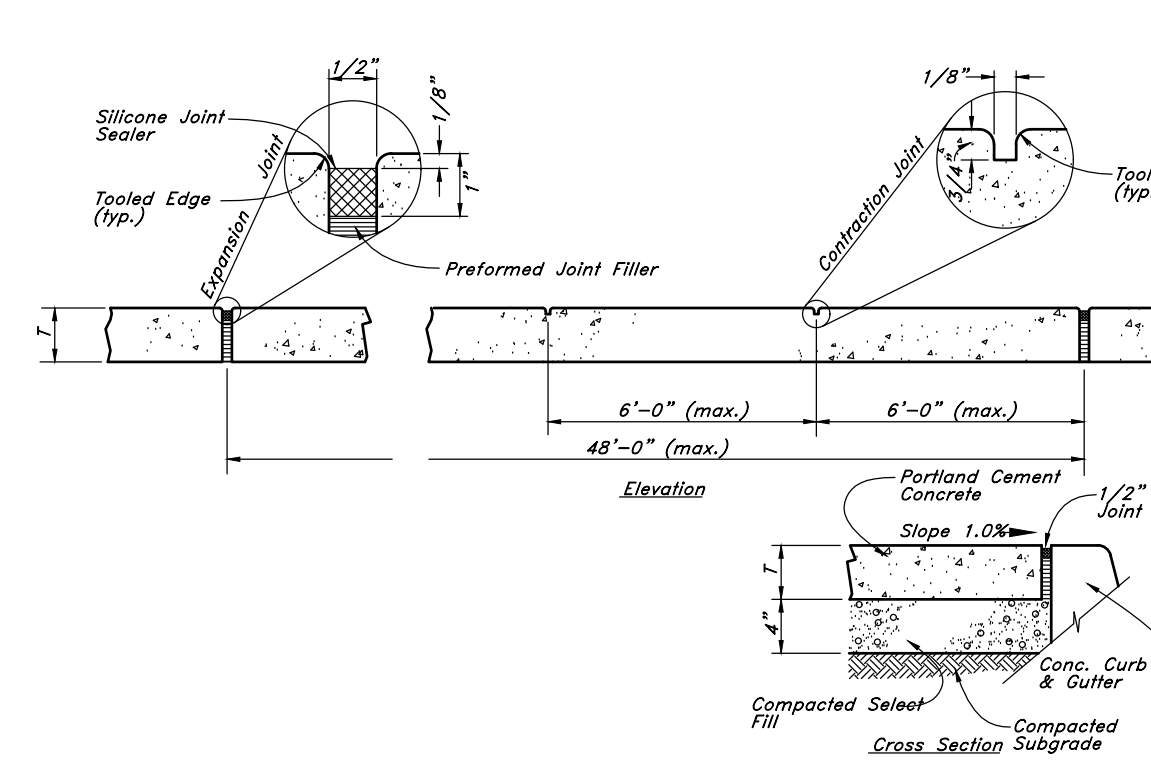
# **Typical Curb Ramp Detail**  
Not to Scale



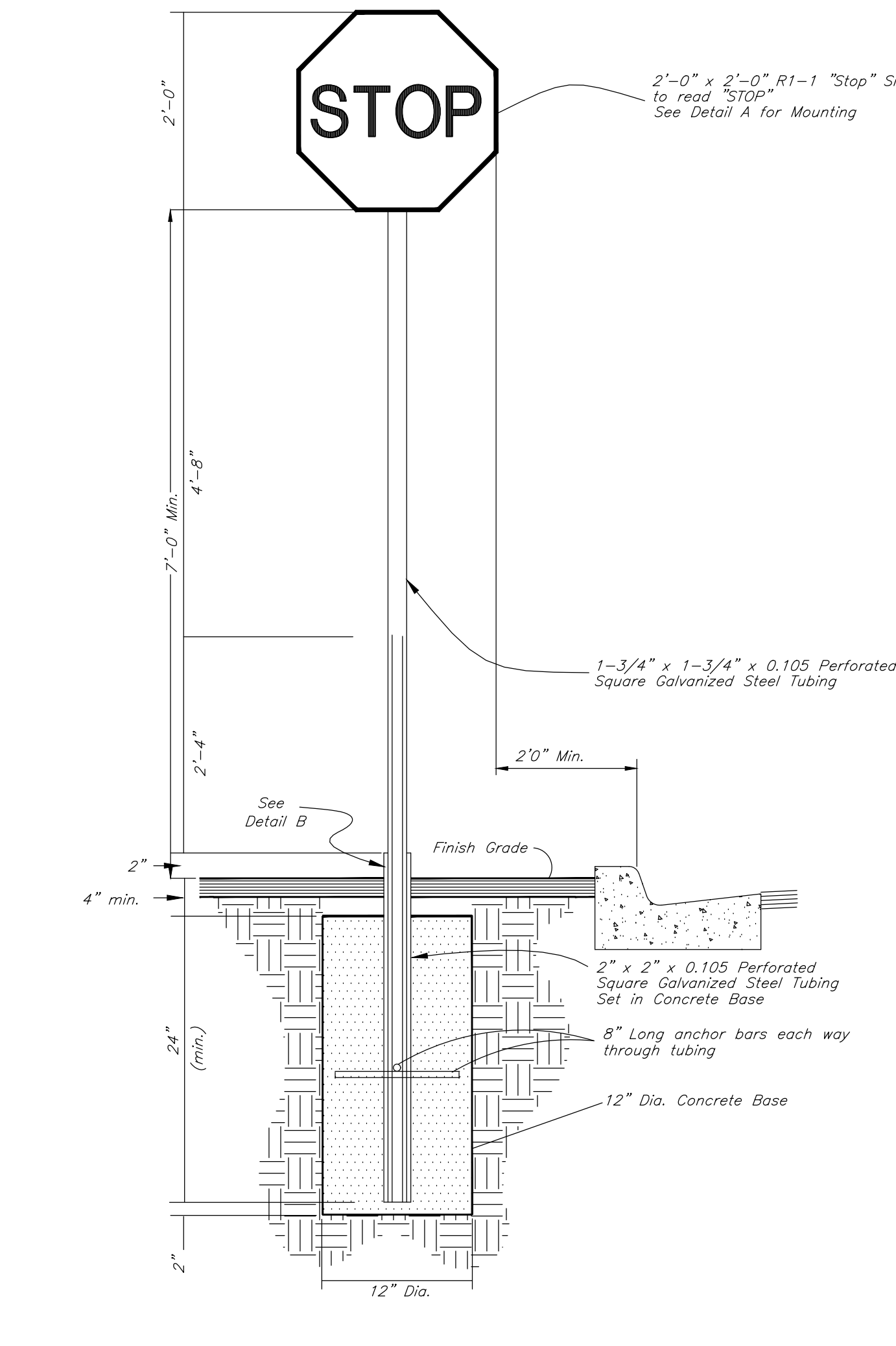
# **Portland Cement Concrete Pavement Drive & Parking Areas**  
Not to Scale



# **Thickened Edge Walk**  
Not to Scale



# **Concrete Sidewalk & Plaza Areas**  
Not to Scale



# **Stop Sign**  
Not to Scale



1144 E 2800 N  
OGDEN, UT 84414

contact:  
p: 801.644.4926  
e: info@developarchitects.com  
web: www.developarchitects.com

DEVELOP ARCHITECTS, LLC

PROJECT TITLE  
**GVH DISTRIBUTION**  
2468 N RULON WHITE BLVD  
OGDEN, UTAH 84404

DOCUMENT DATE:  
April 10, 2020

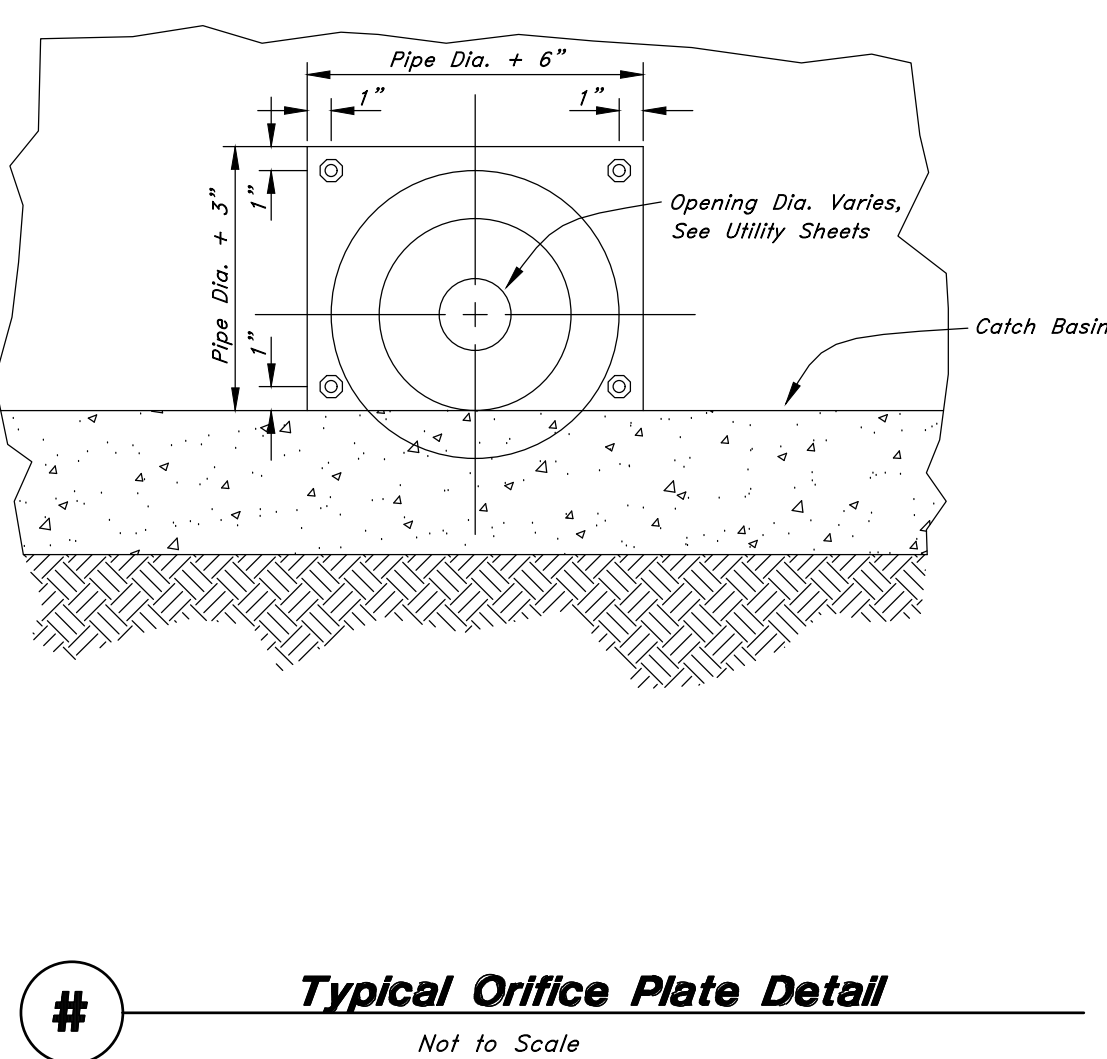
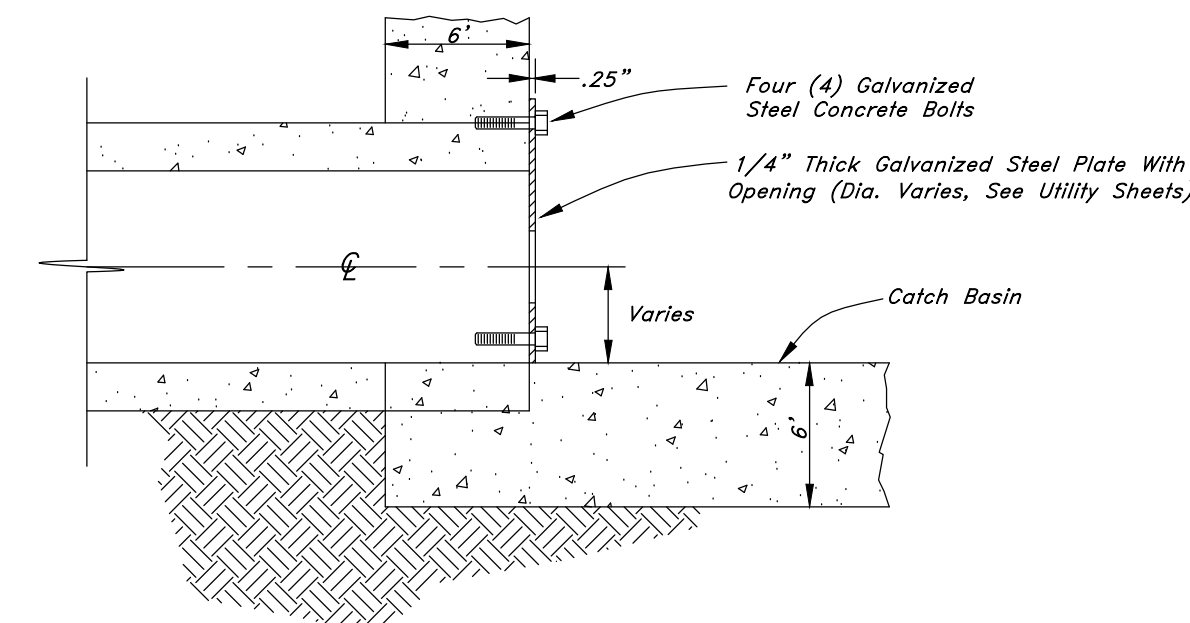
PROJECT PHASE  
CONSTRUCTION

REVISIONS  
# Description Date

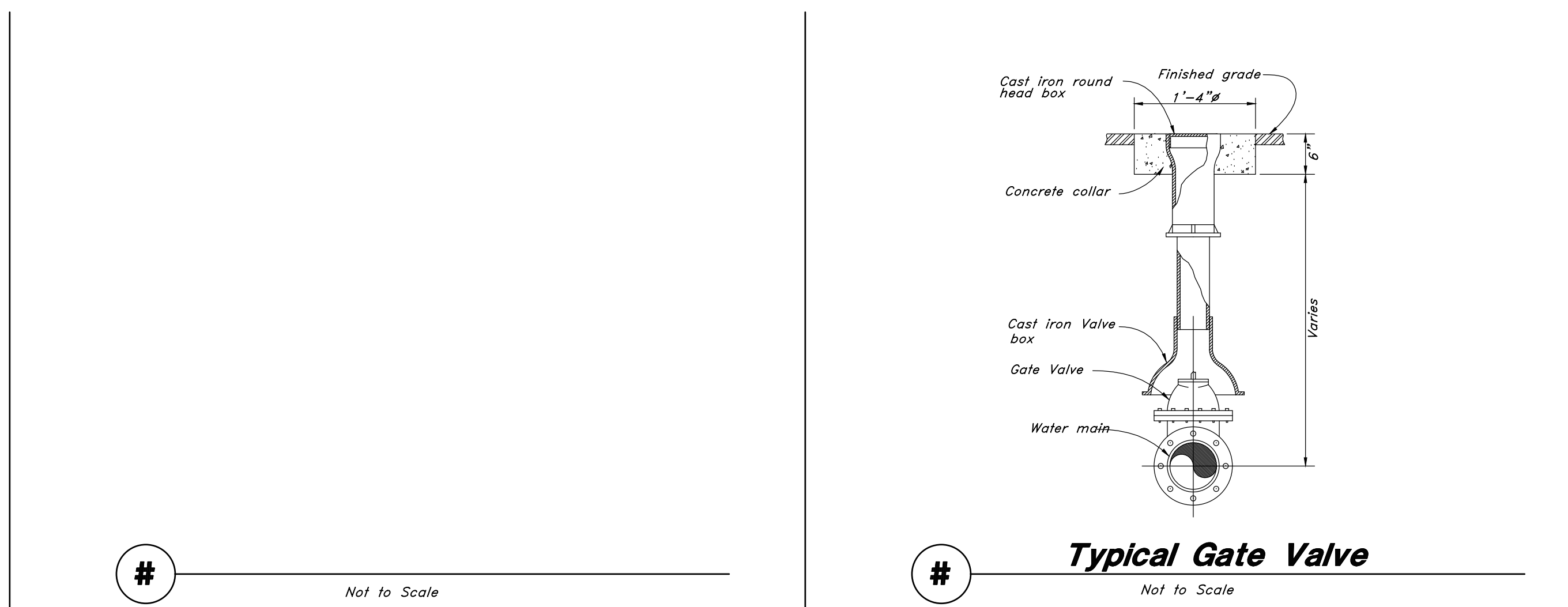
DRAWING DESCRIPTION  
DETAILS

**C4.1**

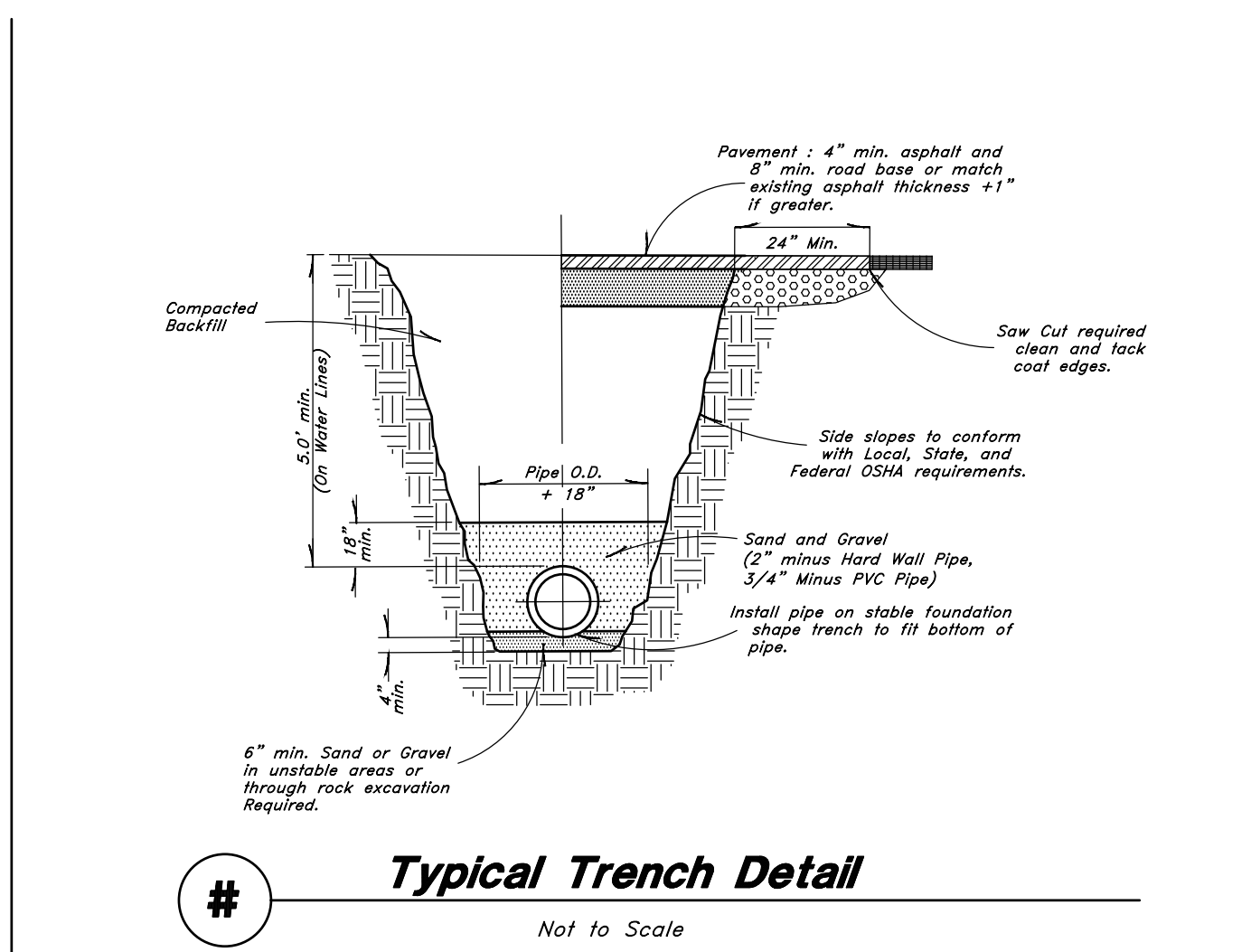
SHEET NUMBER



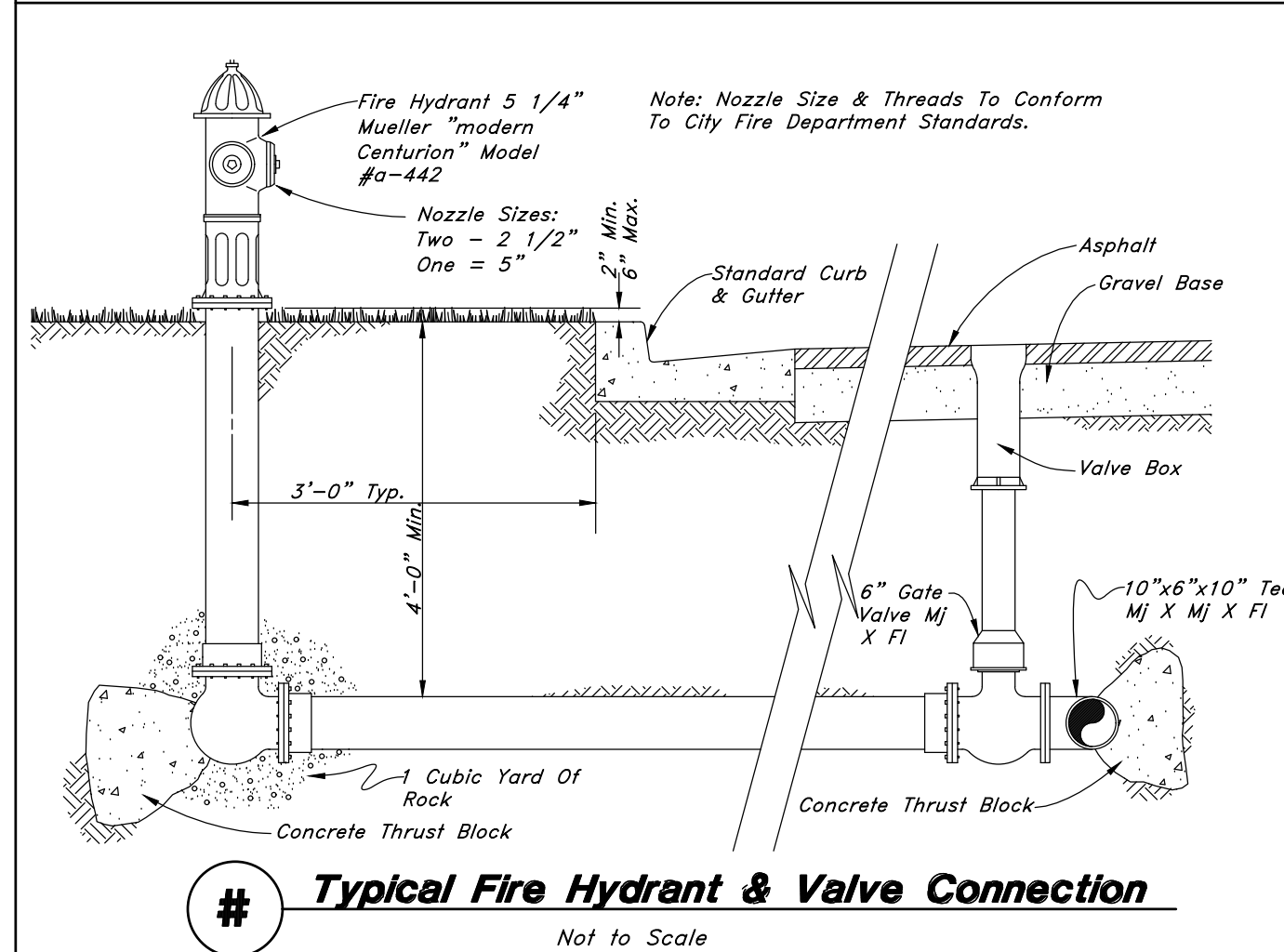
# **Typical Orifice Plate Detail**  
Not to Scale



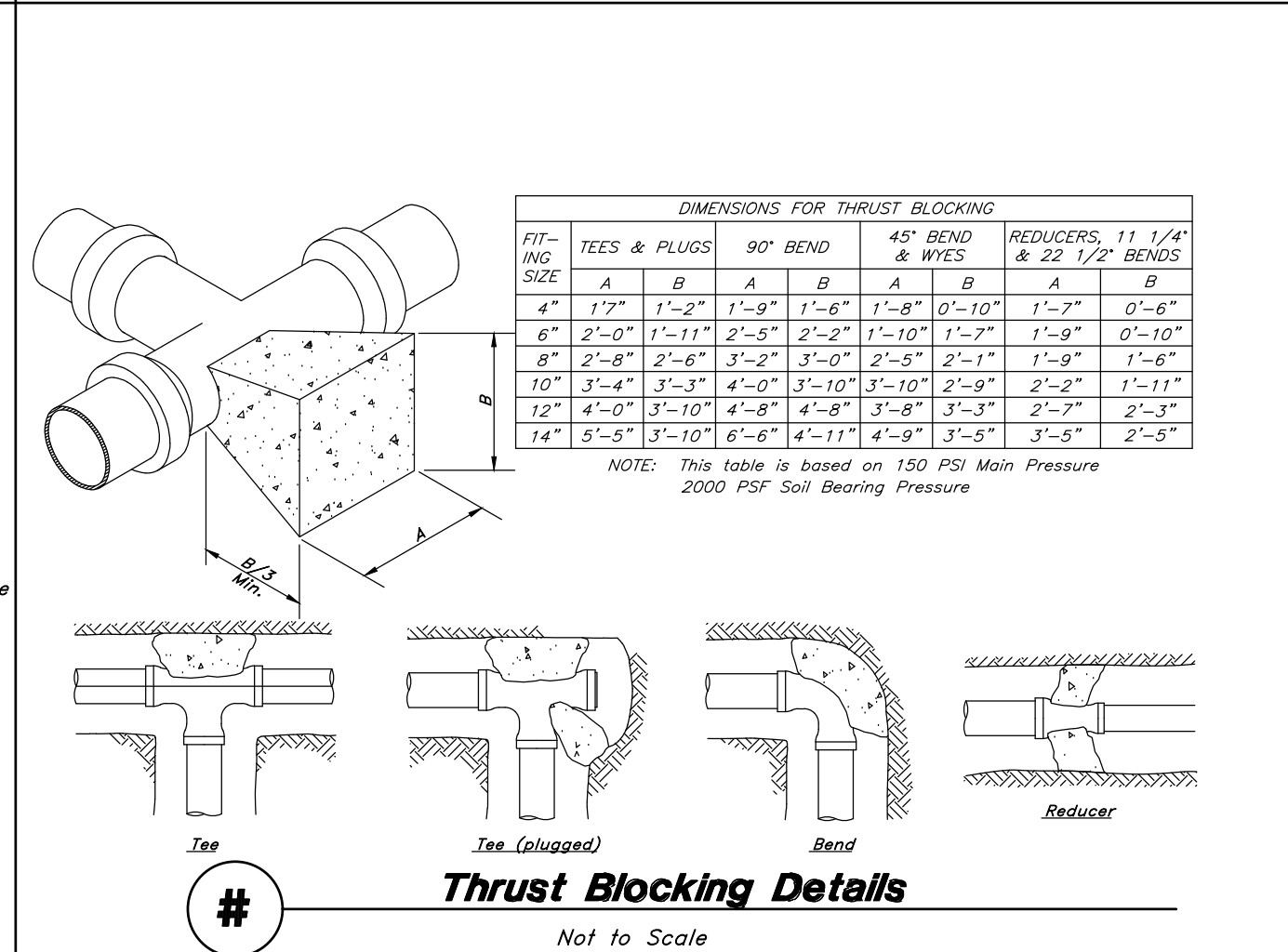
# **Typical Gate Valve**  
Not to Scale



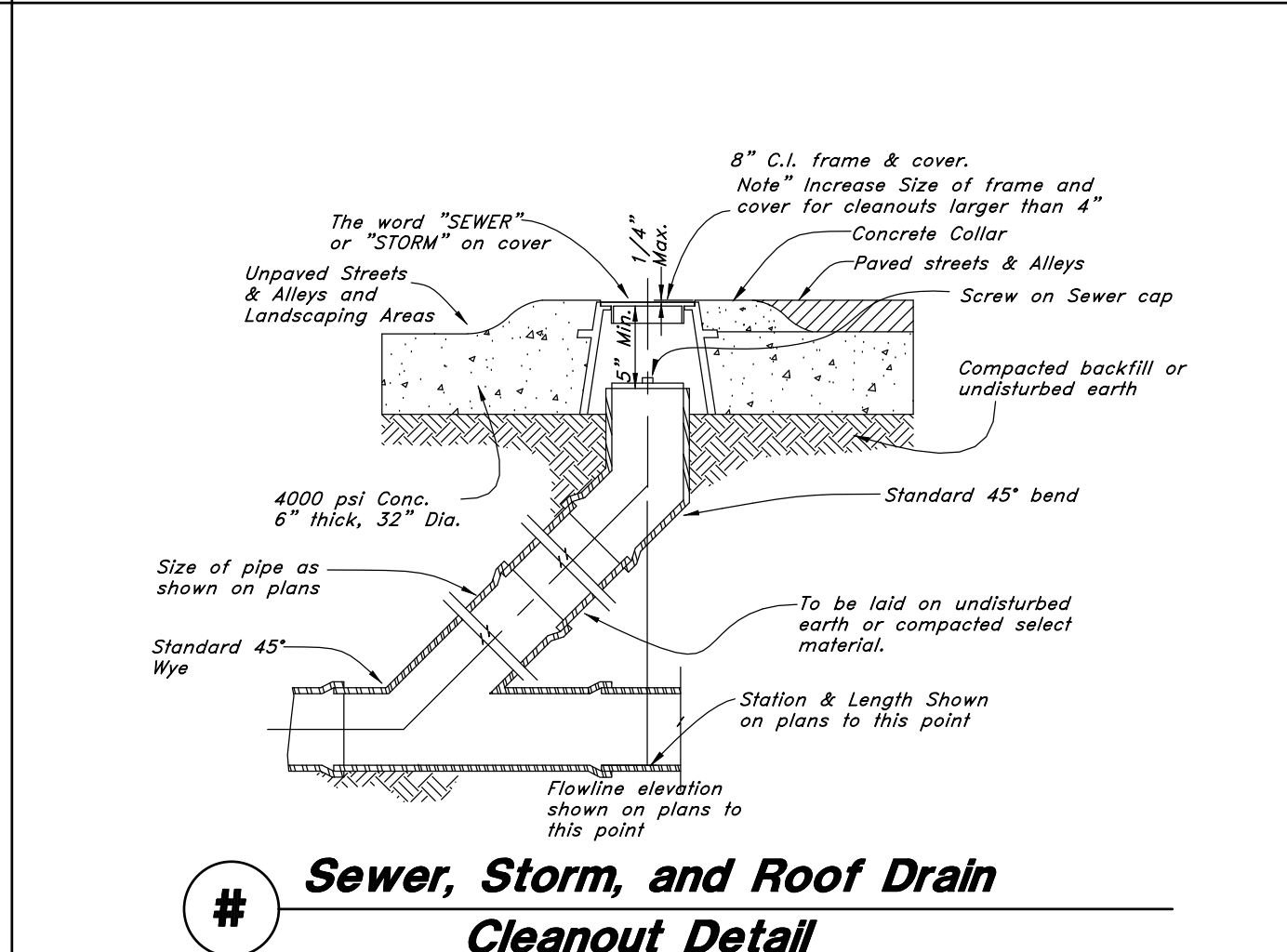
# **Typical Trench Detail**  
Not to Scale



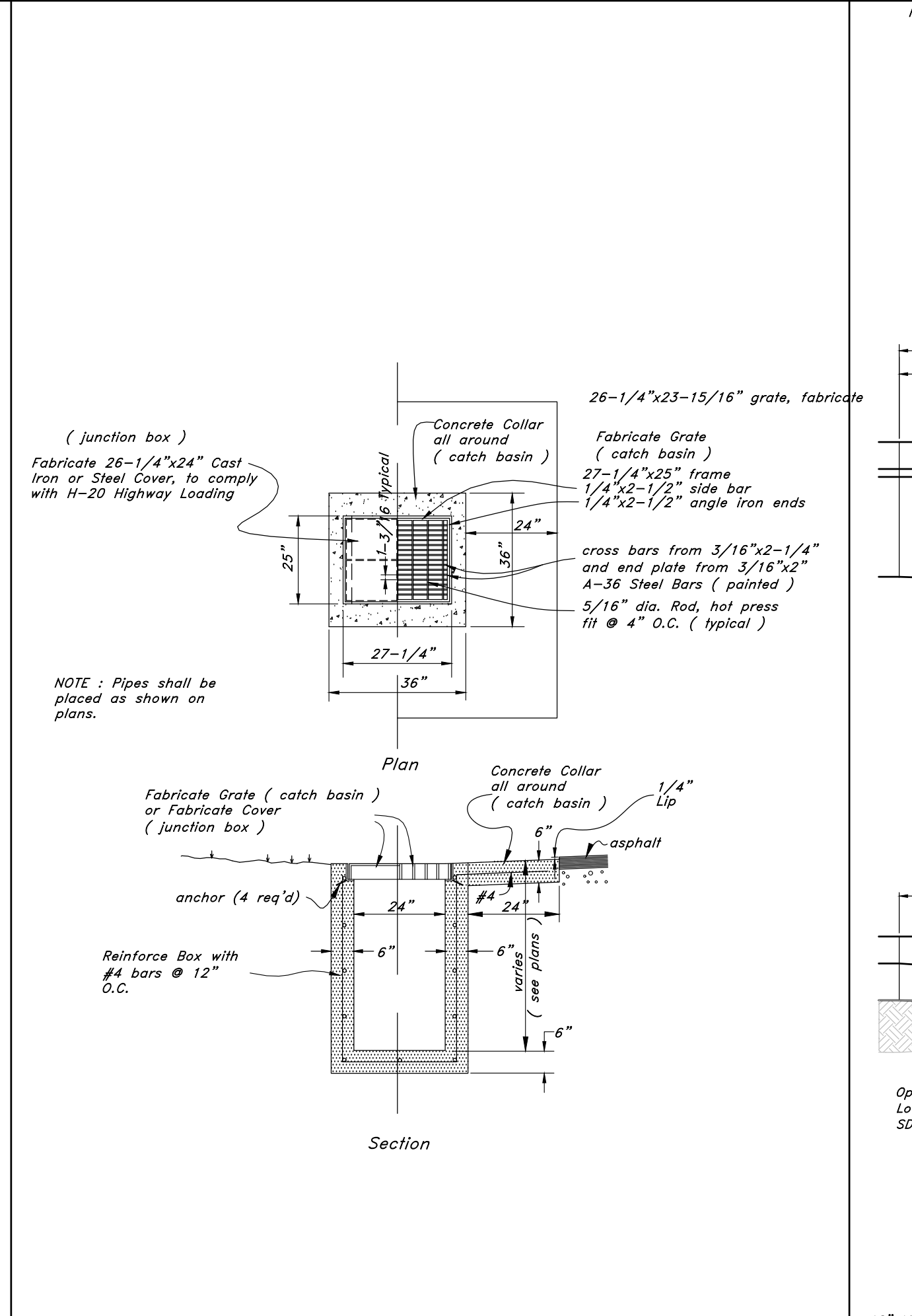
# **Typical Fire Hydrant & Valve Connection**  
Not to Scale



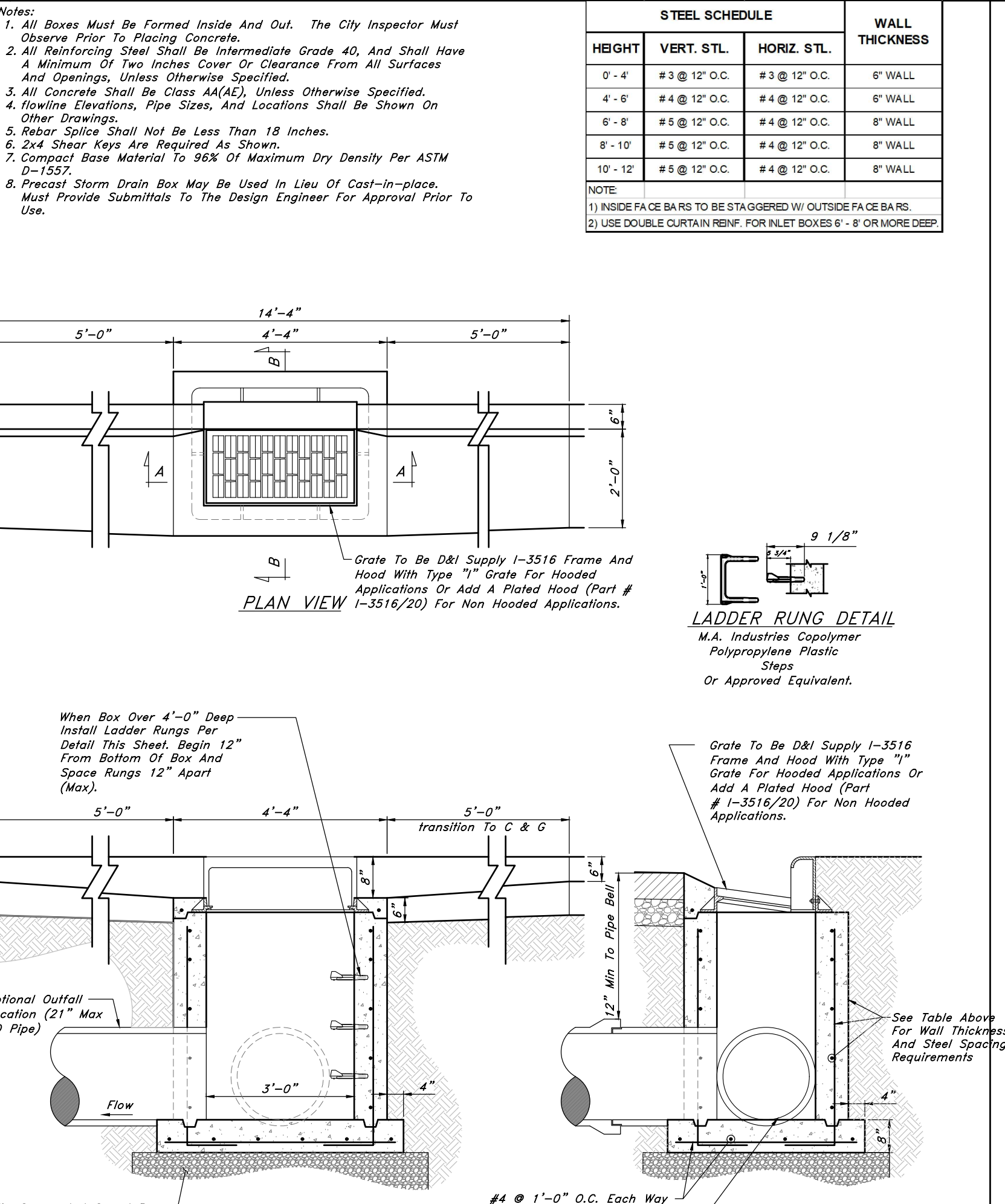
# **Thrust Blocking Details**  
Not to Scale



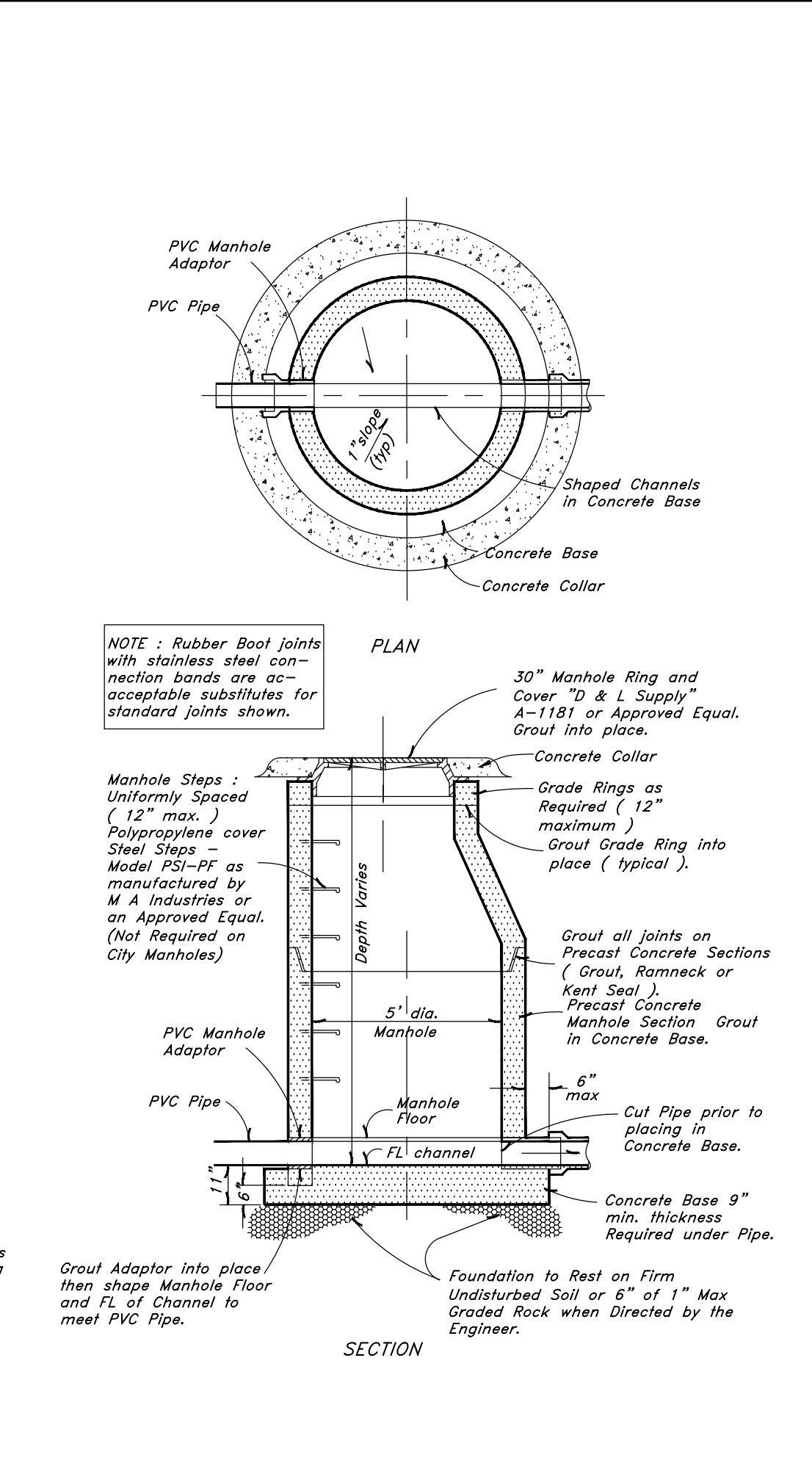
# **Sewer, Storm, and Roof Drain Cleanout Detail**  
Not to Scale



# **Catch Basin/Junction Box**  
Not to Scale



# **Typical Inlet Box**  
Not to Scale



# **Typical Manhole Detail**  
Not to Scale

# **Not to Scale**