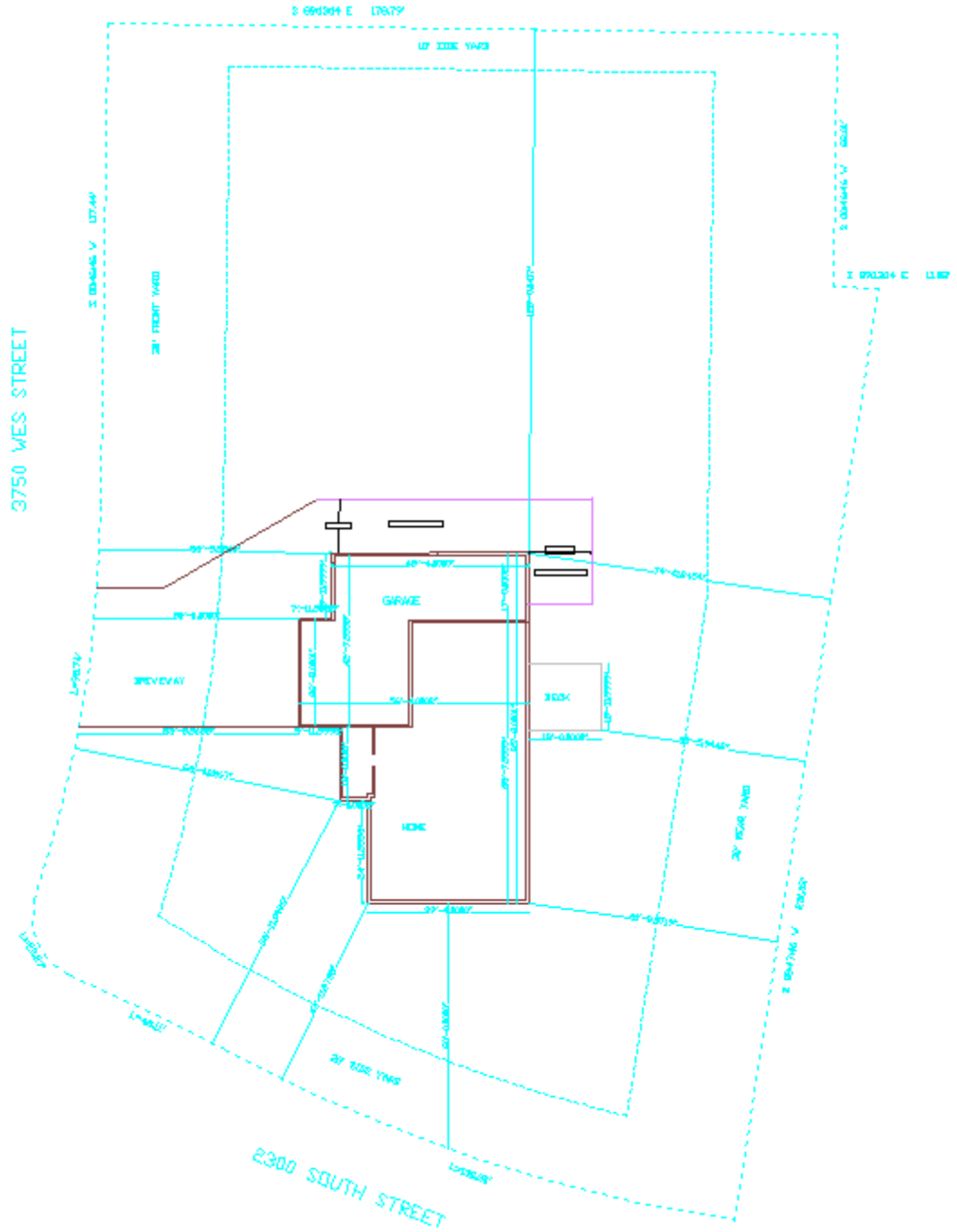
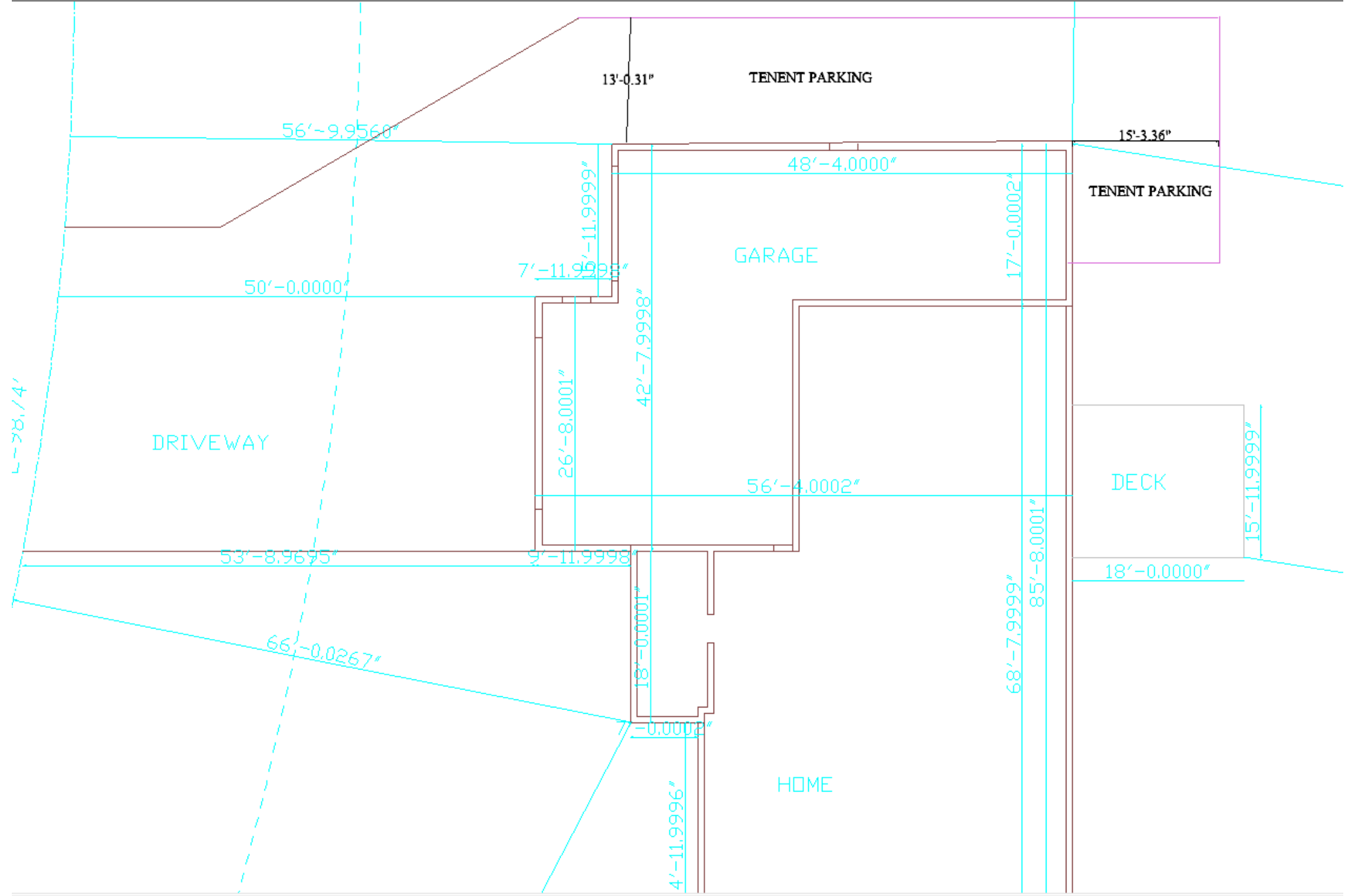


3750 WES STREET



2300 SOUTH STREET



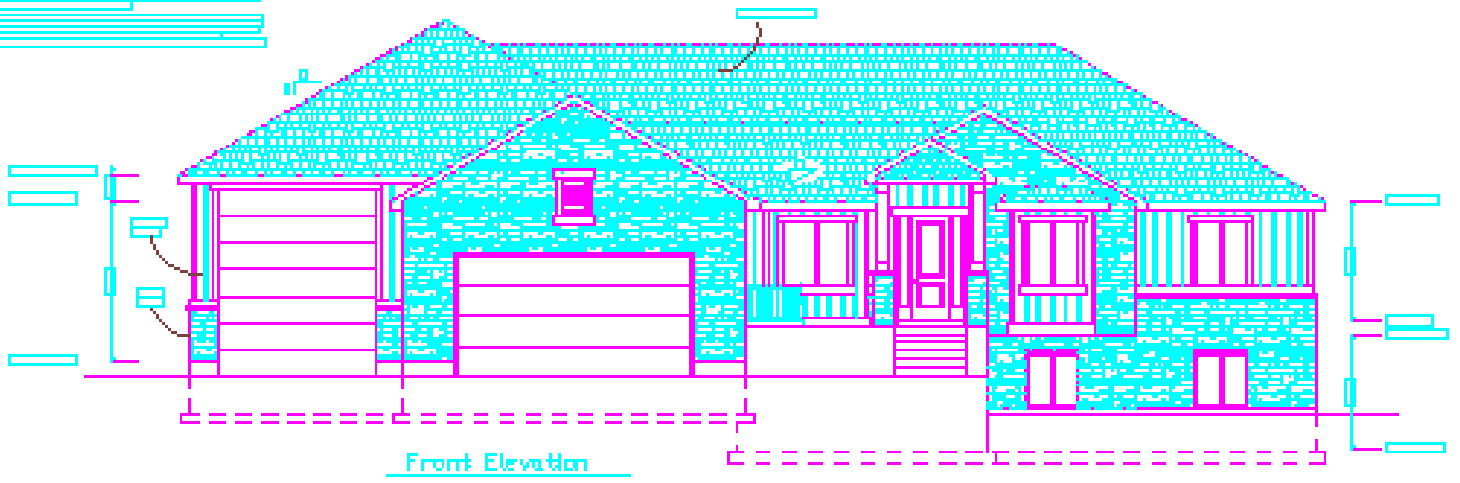
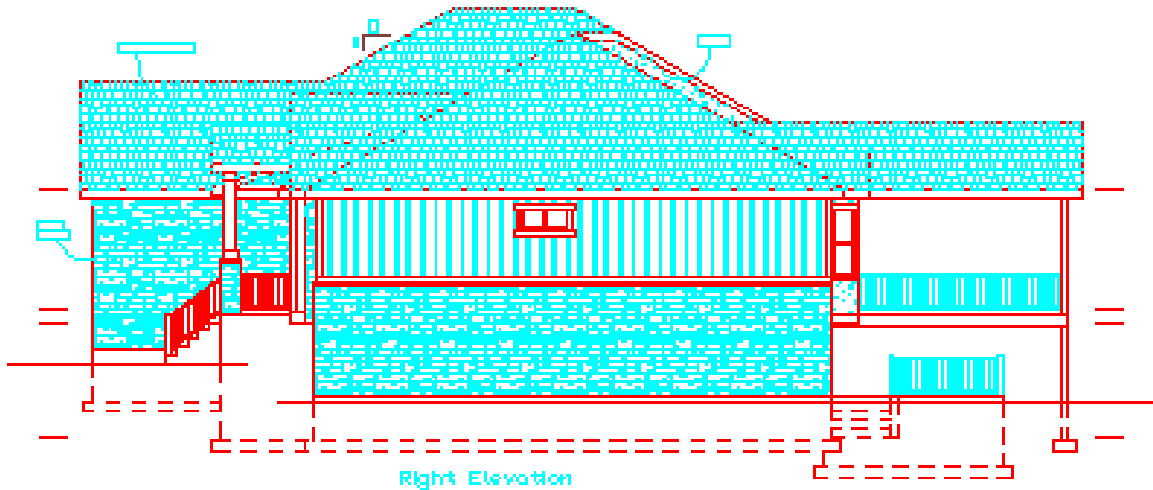
PLAN NOTES

FINISH

- 1. EXTERIOR WALLS: 1/2" GYPSUM BOARD OVER 2x4 STUDS
- 2. INTERIOR WALLS: 5/8" GYPSUM BOARD OVER 2x4 STUDS
- 3. CEILING: 5/8" GYPSUM BOARD OVER 2x4 RAFTERS
- 4. FLOORING: 3/4" OSB OVER 2x6 JOISTS
- 5. ROOFING: 1/2" OSB OVER 2x6 RAFTERS
- 6. EXTERIOR FINISH: VINYL SIDING
- 7. INTERIOR FINISH: PAPER DRYWALL
- 8. PAINT: EXTERIOR - WHITE, INTERIOR - LIGHT GREY
- 9. ROOF FINISH: ASPHALT/FLT SHINGLES
- 10. FOUNDATION: CONCRETE SLAB ON GRADE
- 11. WINDOWS: 1/2" GLASS UNITS WITH VINYL FINISH
- 12. DOORS: 1 3/4" SOLID CORE WITH VINYL FINISH
- 13. STAIRS: 2x8 TREADS, 1x6 RISERS
- 14. HANDRAILS: 1 1/2" DIA. WOOD
- 15. LIGHT FIXTURES: 1x4x6 RECESSED CAN
- 16. ELECTRICAL: 120V, 15A BRN/WH
- 17. PLUMBING: 1/2" CPVC
- 18. MECHANICAL: 1/2" RIGID PVC
- 19. EXTERIOR LIGHTING: 1x4x6 RECESSED CAN
- 20. EXTERIOR VENTILATION: 1x4x6 RECESSED CAN
- 21. EXTERIOR SCREENING: 1x4x6 RECESSED CAN
- 22. EXTERIOR TRIM: 1x4x6 RECESSED CAN
- 23. EXTERIOR CORNER BRICK: 1x4x6 RECESSED CAN
- 24. EXTERIOR CORNER STONE: 1x4x6 RECESSED CAN
- 25. EXTERIOR CORNER TILE: 1x4x6 RECESSED CAN
- 26. EXTERIOR CORNER METAL: 1x4x6 RECESSED CAN
- 27. EXTERIOR CORNER GLASS: 1x4x6 RECESSED CAN
- 28. EXTERIOR CORNER WOOD: 1x4x6 RECESSED CAN
- 29. EXTERIOR CORNER VINYL: 1x4x6 RECESSED CAN
- 30. EXTERIOR CORNER BRICK: 1x4x6 RECESSED CAN
- 31. EXTERIOR CORNER STONE: 1x4x6 RECESSED CAN
- 32. EXTERIOR CORNER TILE: 1x4x6 RECESSED CAN
- 33. EXTERIOR CORNER METAL: 1x4x6 RECESSED CAN
- 34. EXTERIOR CORNER GLASS: 1x4x6 RECESSED CAN
- 35. EXTERIOR CORNER WOOD: 1x4x6 RECESSED CAN
- 36. EXTERIOR CORNER VINYL: 1x4x6 RECESSED CAN
- 37. EXTERIOR CORNER BRICK: 1x4x6 RECESSED CAN
- 38. EXTERIOR CORNER STONE: 1x4x6 RECESSED CAN
- 39. EXTERIOR CORNER TILE: 1x4x6 RECESSED CAN
- 40. EXTERIOR CORNER METAL: 1x4x6 RECESSED CAN
- 41. EXTERIOR CORNER GLASS: 1x4x6 RECESSED CAN
- 42. EXTERIOR CORNER WOOD: 1x4x6 RECESSED CAN
- 43. EXTERIOR CORNER VINYL: 1x4x6 RECESSED CAN
- 44. EXTERIOR CORNER BRICK: 1x4x6 RECESSED CAN
- 45. EXTERIOR CORNER STONE: 1x4x6 RECESSED CAN
- 46. EXTERIOR CORNER TILE: 1x4x6 RECESSED CAN
- 47. EXTERIOR CORNER METAL: 1x4x6 RECESSED CAN
- 48. EXTERIOR CORNER GLASS: 1x4x6 RECESSED CAN
- 49. EXTERIOR CORNER WOOD: 1x4x6 RECESSED CAN
- 50. EXTERIOR CORNER VINYL: 1x4x6 RECESSED CAN

FOUNDATION

- 1. EXTERIOR WALLS: 1/2" GYPSUM BOARD OVER 2x4 STUDS
- 2. INTERIOR WALLS: 5/8" GYPSUM BOARD OVER 2x4 STUDS
- 3. CEILING: 5/8" GYPSUM BOARD OVER 2x4 RAFTERS
- 4. FLOORING: 3/4" OSB OVER 2x6 JOISTS
- 5. ROOFING: 1/2" OSB OVER 2x6 RAFTERS
- 6. EXTERIOR FINISH: VINYL SIDING
- 7. INTERIOR FINISH: PAPER DRYWALL
- 8. PAINT: EXTERIOR - WHITE, INTERIOR - LIGHT GREY
- 9. ROOF FINISH: ASPHALT/FLT SHINGLES
- 10. FOUNDATION: CONCRETE SLAB ON GRADE
- 11. WINDOWS: 1/2" GLASS UNITS WITH VINYL FINISH
- 12. DOORS: 1 3/4" SOLID CORE WITH VINYL FINISH
- 13. STAIRS: 2x8 TREADS, 1x6 RISERS
- 14. HANDRAILS: 1 1/2" DIA. WOOD
- 15. LIGHT FIXTURES: 1x4x6 RECESSED CAN
- 16. ELECTRICAL: 120V, 15A BRN/WH
- 17. PLUMBING: 1/2" CPVC
- 18. MECHANICAL: 1/2" RIGID PVC
- 19. EXTERIOR LIGHTING: 1x4x6 RECESSED CAN
- 20. EXTERIOR VENTILATION: 1x4x6 RECESSED CAN
- 21. EXTERIOR SCREENING: 1x4x6 RECESSED CAN
- 22. EXTERIOR TRIM: 1x4x6 RECESSED CAN
- 23. EXTERIOR CORNER BRICK: 1x4x6 RECESSED CAN
- 24. EXTERIOR CORNER STONE: 1x4x6 RECESSED CAN
- 25. EXTERIOR CORNER TILE: 1x4x6 RECESSED CAN
- 26. EXTERIOR CORNER METAL: 1x4x6 RECESSED CAN
- 27. EXTERIOR CORNER GLASS: 1x4x6 RECESSED CAN
- 28. EXTERIOR CORNER WOOD: 1x4x6 RECESSED CAN
- 29. EXTERIOR CORNER VINYL: 1x4x6 RECESSED CAN
- 30. EXTERIOR CORNER BRICK: 1x4x6 RECESSED CAN
- 31. EXTERIOR CORNER STONE: 1x4x6 RECESSED CAN
- 32. EXTERIOR CORNER TILE: 1x4x6 RECESSED CAN
- 33. EXTERIOR CORNER METAL: 1x4x6 RECESSED CAN
- 34. EXTERIOR CORNER GLASS: 1x4x6 RECESSED CAN
- 35. EXTERIOR CORNER WOOD: 1x4x6 RECESSED CAN
- 36. EXTERIOR CORNER VINYL: 1x4x6 RECESSED CAN
- 37. EXTERIOR CORNER BRICK: 1x4x6 RECESSED CAN
- 38. EXTERIOR CORNER STONE: 1x4x6 RECESSED CAN
- 39. EXTERIOR CORNER TILE: 1x4x6 RECESSED CAN
- 40. EXTERIOR CORNER METAL: 1x4x6 RECESSED CAN
- 41. EXTERIOR CORNER GLASS: 1x4x6 RECESSED CAN
- 42. EXTERIOR CORNER WOOD: 1x4x6 RECESSED CAN
- 43. EXTERIOR CORNER VINYL: 1x4x6 RECESSED CAN
- 44. EXTERIOR CORNER BRICK: 1x4x6 RECESSED CAN
- 45. EXTERIOR CORNER STONE: 1x4x6 RECESSED CAN
- 46. EXTERIOR CORNER TILE: 1x4x6 RECESSED CAN
- 47. EXTERIOR CORNER METAL: 1x4x6 RECESSED CAN
- 48. EXTERIOR CORNER GLASS: 1x4x6 RECESSED CAN
- 49. EXTERIOR CORNER WOOD: 1x4x6 RECESSED CAN
- 50. EXTERIOR CORNER VINYL: 1x4x6 RECESSED CAN



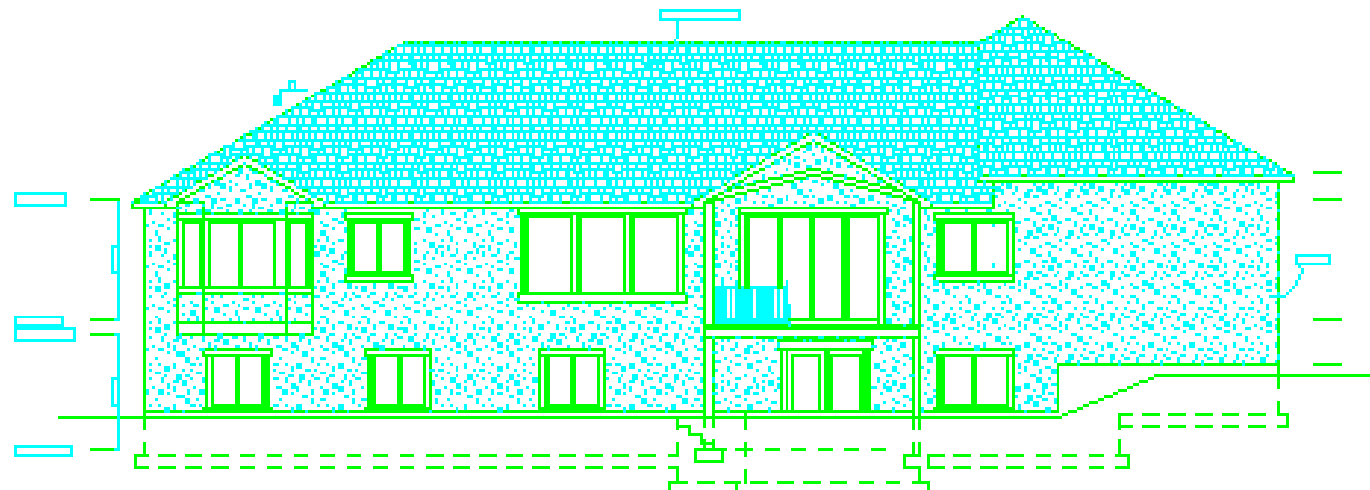
Homesites
Dale McCreary
801.475.0882

General Construction

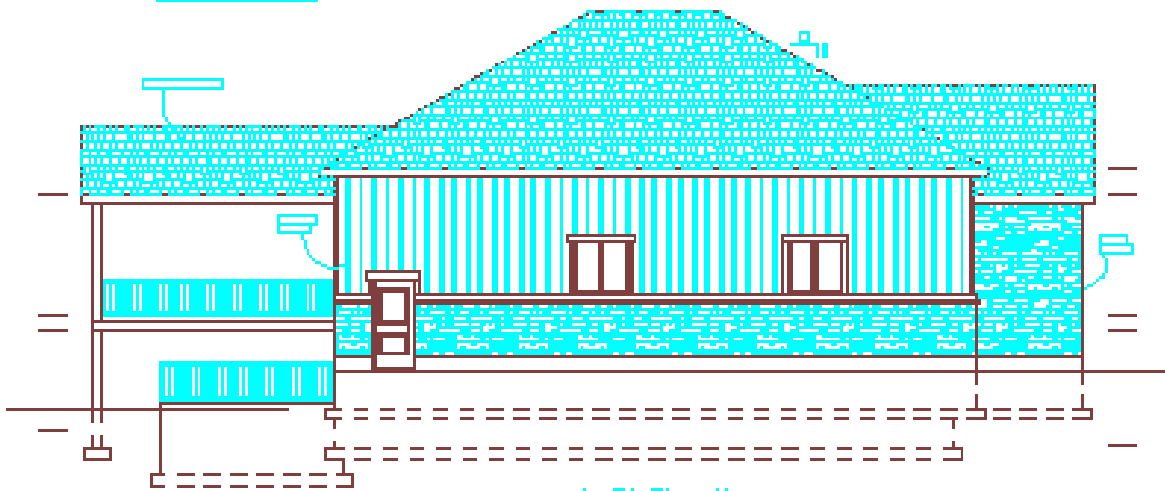
McCreary Residence
Lot #1, Summerdale Farms
2200 South 3700 West
Taylors, Utah



Creative
Line
LLC
Architects
Utah
100 1000-1000



Back Elevation



Left Elevation

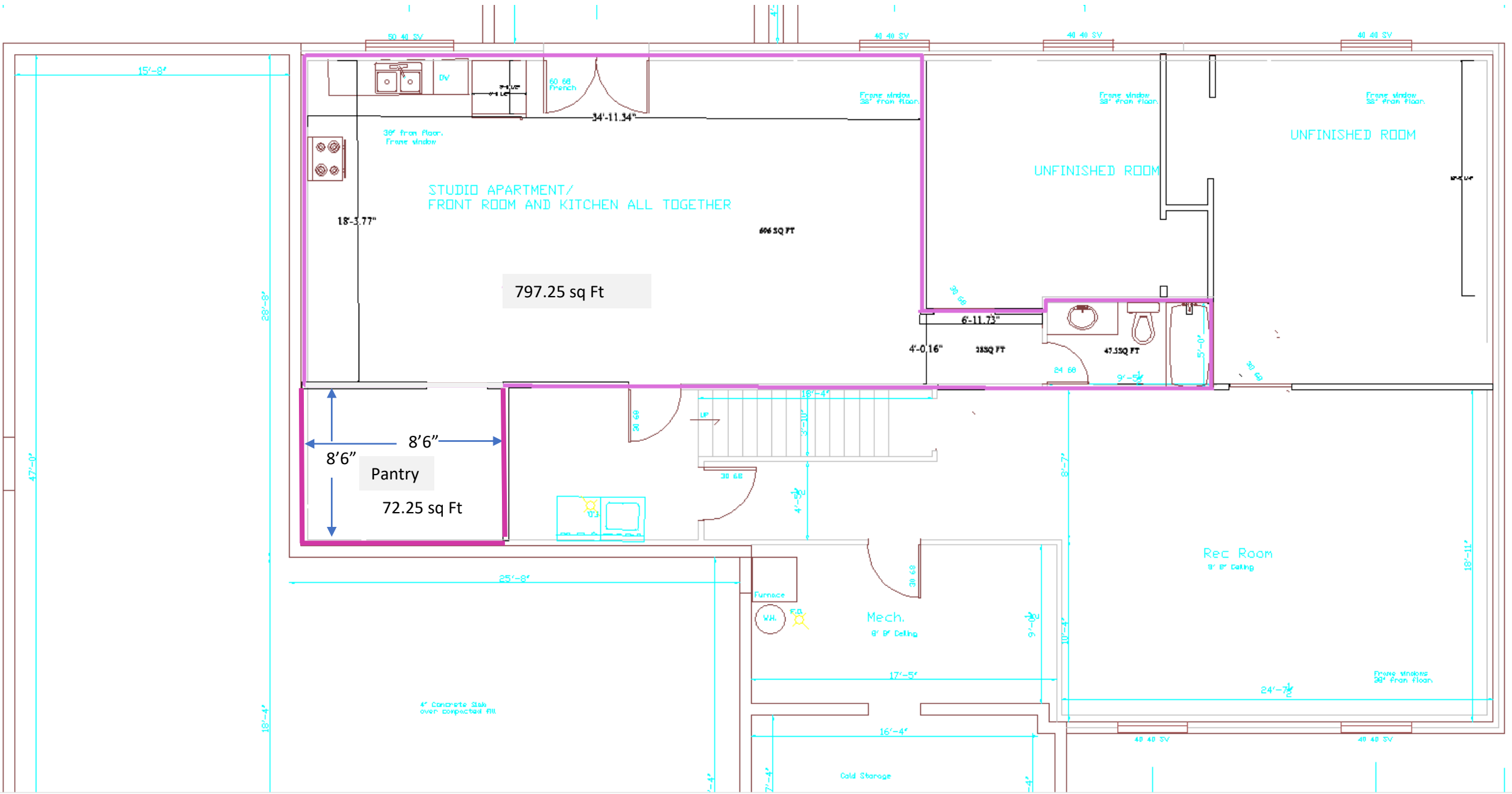
DATE: 10/20/2011 2:10:00 PM
 [Redacted text]
VERSION:
 [Redacted text]

Homeowner:
 Mike McCrory
 811 675-0887

General Contractor:

McCrory RESIDENCE
 Lot #1, Summer Farm
 2299 South 3700 West
 Taylor, Utah

[Redacted]
 [Redacted]
 [Redacted]
 [Redacted]
 Creative
 Line
 [Redacted]
 [Redacted]



797.25 sq Ft

Pantry
72.25 sq Ft

STUDIO APARTMENT/
FRONT ROOM AND KITCHEN ALL TOGETHER

466 SQ FT

UNFINISHED ROOM

UNFINISHED ROOM

Rec Room
8' 8" Ceiling

Mech.
8' 8" Ceiling

Cold Storage

34'-11.34"

18'-3.77"

8'6"

8'6"

72.25 sq Ft

8' 8" Ceiling

17'-5"

16'-4"

6'-11.73"

215 SQ FT

47.55 SQ FT

24'-7 1/2"

15'-8"

28'-8"

18'-4"

50 40 SV

40 40 SV

40 40 SV

40 40 SV

40 40 SV

40 40 SV

36" from floor.
Frame window

60 68
French

Frame window
38" from floor

Frame window
38" from floor

Frame window
38" from floor

Frame Windows
28" from floor

4" Concrete Slab
over compacted fill

Furnace

WH.

F.H.

LP

20 68

20 68

20 68

20 68

20 68

20 68

20 68

20 68

20 68

20 68

20 68

20 68

24 68

9'-5"

5'-0"

15' 68

15' 68

W.C.