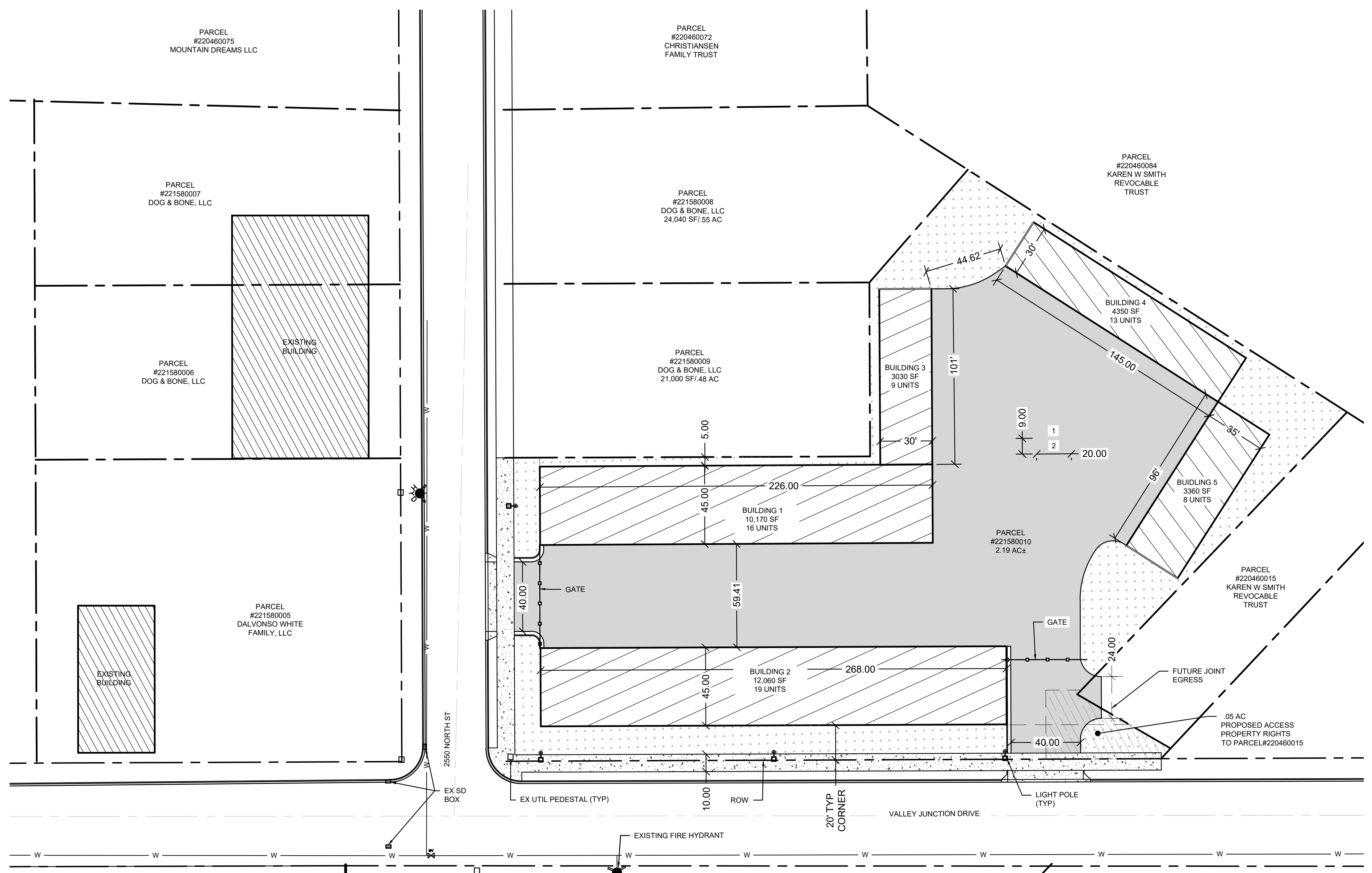
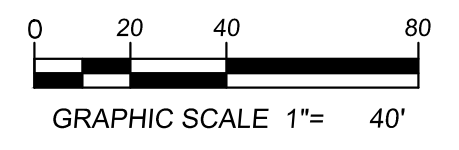
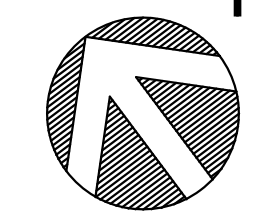


PLOTTED October 21, 2020 By Jennifer Maghann FILE 2\2019 PROJECTS\19046ESU EDEN STORAGE UNITS\ACAD\CONCEPTS\EDEN STORAGE UNITS_CONCEPT 5.DWG



SITE PLAN
SCALE: 1" = 30'



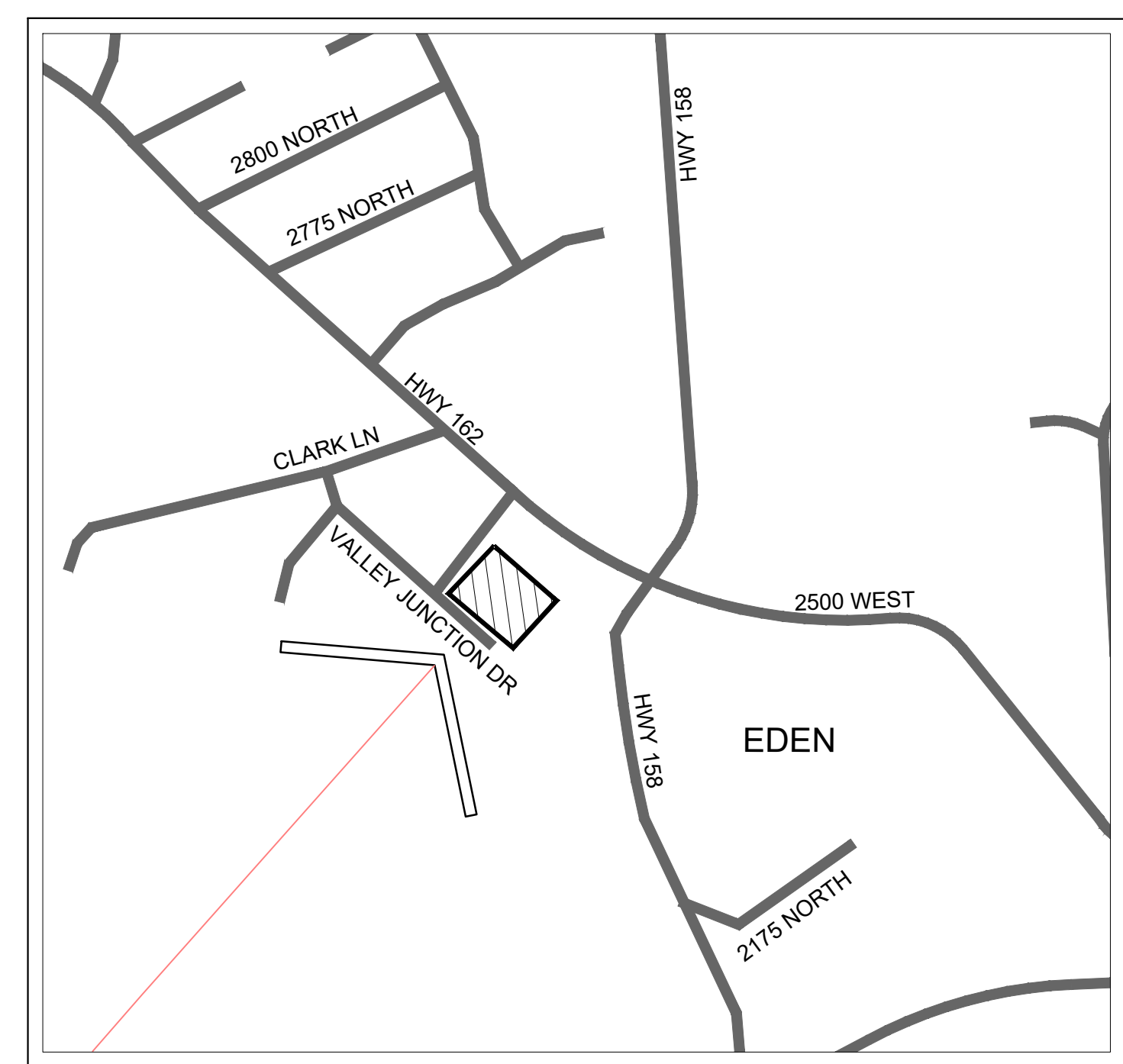
DESIGN STATS

PARCEL #22-158-0010
TOTAL PARCEL AREA: 95,396 SF/2.19 AC
ZONE: CV-2
LANDUSE: RECREATION STORAGE
TOTAL UNITS: 66

BUILDING COVERAGE: 37,092 SF/37%
ASPHALT COVERAGE: 39,609 SF/43%
LANDSCAPING: 19,072 SF/20%

PARKING REQUIRED: 0
PARKING SHOWN: 0

- BUILDING 1**
16 TOTAL UNITS
14' X 45'
- BUILDING 2**
19 TOTAL UNITS
14' X 45'
- BUILDING 3**
9 TOTAL UNITS
11' X 35'
- BUILDING 4**
13 TOTAL UNITS
11' X 30'
- BUILDING 5**
8 TOTAL UNITS
12' X 35'



VICINITY MAP

HATCH LEGEND

- PROPOSED ASPHALT
- PROPOSED CONCRETE
- PROPOSED LANDSCAPE

<p>DESCRIPTION</p>	
NO.	DATE
SITE PLAN	
<p>EDEN STORAGE 2600 N VALLEY JUNCTION DR EDEN, UTAH 84310</p>	
<p>95 Golf Course Rd. Suite 101 Logan, UT 84321 435.713.0099</p>	
DATE: 12 OCTOBER 2020	
SCALE: 1" = 40'	
DESIGN BY: J. MAUGHAN	
CHECKED BY: L. ANDERSON	
APPROVED BY: L. ANDERSON	
PROJECT NUMBER: 19046ESU	
SHEET: CON	