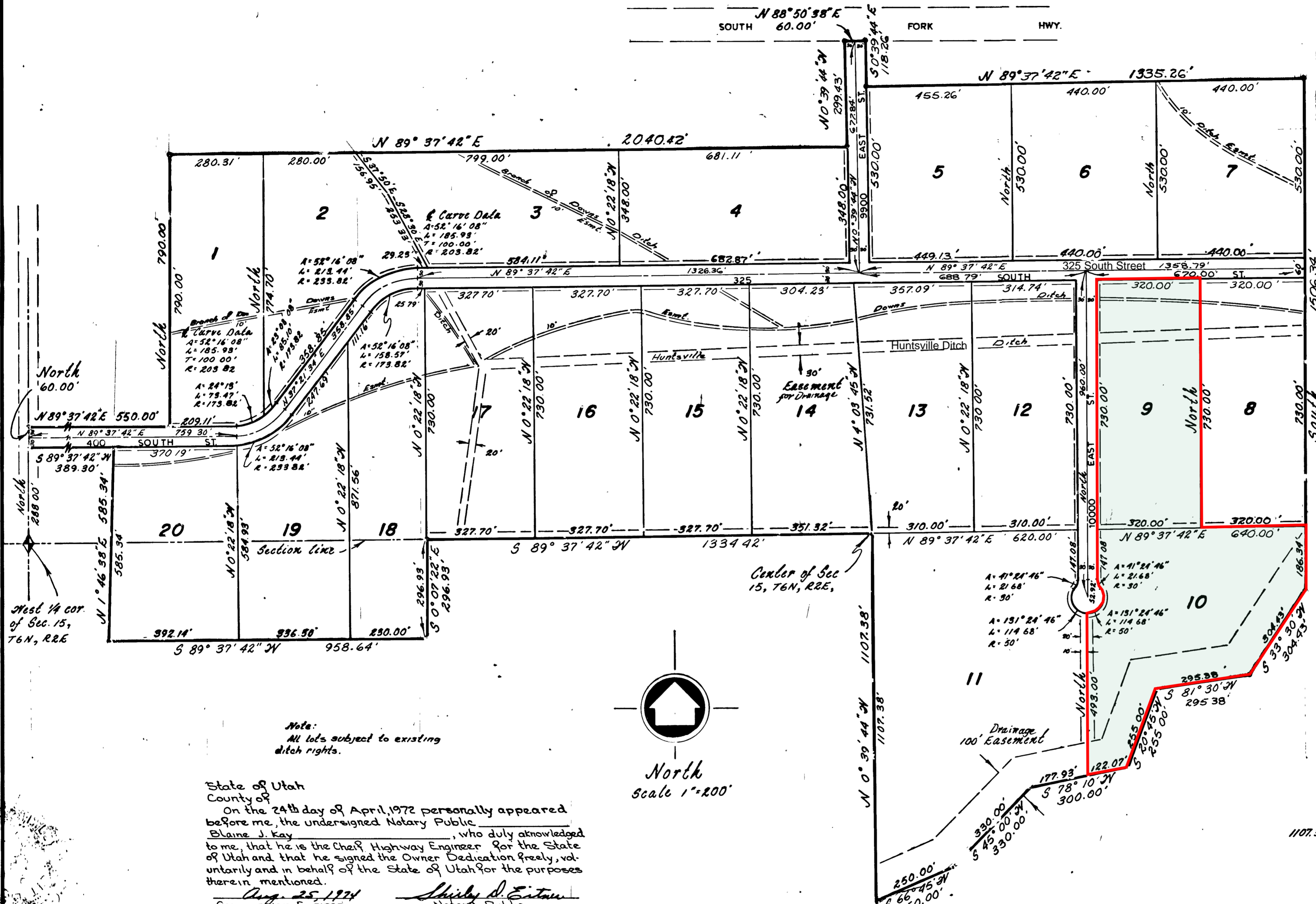


# SOUTH FORK RANCHETTES SUBDIVISION

A PART OF SECTION 15, T6N, R2E, SLB&M, U.S. SURVEY

WEBER COUNTY, UTAH



Note:  
All lots subject to existing ditch rights.

State of Utah  
County of Weber  
On the 24th day of April, 1972 personally appeared before me, the undersigned Notary Public, Blaine J. Kay, who duly acknowledged to me, that he is the Chief Highway Engineer for the State of Utah and that he signed the Owner Dedication freely, voluntarily and in behalf of the State of Utah for the purposes therein mentioned.  
August 25, 1974  
Commission Expires

WEBER COUNTY ATTORNEY  
I have examined the proposed plat of South Fork Ranchettes Subdivision and in my opinion it conforms with the county ordinances applicable thereto and now in force and effect.  
Date May 23, 1972  
Robert L. Newberry  
County Attorney

WEBER COUNTY ENGINEER  
I hereby certify that I have carefully investigated the lines of Survey of the foregoing plat and legal description of the land embraced therein, and find them to be correct and to agree with the lines and monuments on record in this office.  
Signed this 19 day of May, 1972  
Fred W. McLean  
signature

WEBER COUNTY APPROVAL  
This is to certify that this plat and dedication of this plat were duly approved and accepted by the Commissioners of Weber County, Utah this 23 day of May, 1972.  
attest  
title  
[Signature]  
Chairman

NOTE: Utility and Drainage Easements each side of Property line as indicated by dashed lines.  
PREPARED BY:  
GREAT BASIN ENGINEERING & SURVEYING INC.  
CIVIL ENGINEERS LAND SURVEYORS  
Ogden, Utah

**SURVEYORS CERTIFICATE**  
I, Jay R. Anderson, a registered land surveyor in the State of Utah, do hereby certify that this plat of South Fork Ranchettes Subdivision in Weber County, Utah has been correctly drawn to the designated scale and is a true and correct representation of the following description of lands included in said subdivision, based on data compiled from records in the Weber County Recorders Office, and of a survey made on the ground.

Signed this 24th day of August, 1972  
2430 License No. J. R. Anderson Signature  
LAND SURVEYOR  
JAY R. ANDERSON  
2430  
WEBER COUNTY  
STATE OF UTAH

**OWNERS DEDICATION**  
We, the undersigned owners of the hereon described tract of land, hereby set apart and subdivide the same into lots and streets as shown on this plat and name said tract South Fork Ranchettes Subdivision and hereby dedicate, grant and convey to Weber County, Utah, all those parts or portions of said tract of land designated as streets, the same to be used as public thoroughfares forever, and also dedicate to Weber County those certain strips as easements for public utility and drainage purposes as shown hereon, the same to be used for the installation, maintenance, and operation of public utility service lines and drainage as may be authorized by Weber County.  
Signed this 24th day of August, 1972

Bronco Land & Livestock, Inc.  
Michael Ford President  
George Pappas Jr. Secretary  
Blaine J. Kay  
State Road Commissioner of Utah  
**ACKNOWLEDGEMENT**

State of Utah  
County of Weber  
On the 24 day of August, 1971, personally appeared before me, the undersigned Notary Public, the signers of the above Owners Dedication, 2 in number, who duly acknowledged to me they signed it freely and voluntarily and for the purposes therein mentioned.  
August 25, 1974  
Commission Expires  
Shirley D. Estess  
Notary Public

State of Utah  
County of Weber  
On the 24 day of August, 1971, personally appeared before me Michael H Ford and George Pappas Jr. and after being duly sworn acknowledged to me they are President and Secretary of said Corporation and that they signed the Owners Dedication freely, voluntarily and in behalf of said Corporation for the purposes therein mentioned.  
August 25, 1974  
Commission Expires  
Shirley D. Estess  
Notary Public

**BOUNDARY DESCRIPTION**  
A part of Section 15, T6N, R2E, Salt Lake Base & Meridian, U.S. Survey Beginning at a point which is North 288.00 ft. along the Section line from the West 1/4 corner of said Section 15, running thence North 60.00 ft., thence N 89° 37' 42" E 550.00 ft., thence North 790.00 ft., thence N 89° 37' 42" E 2040.42 ft., thence N 0° 39' 44" N 299.43 ft., to the South line of South Fork Road, thence N 88° 39' 38" E 60.00 ft. along said South line thence S 0° 39' 44" N 118.26 ft. along an existing fence, thence N 89° 37' 42" E 1335.26 ft., thence South 1506.34 ft. to the center of the South Fork of the Ogden River, thence six courses along the center of said South Fork as follows: S 33° 30' N 304.43 ft., S 81° 30' N 295.38 ft., S 20° 45' N 255.00 ft., S 78° 10' N 300.00 ft., S 45° 00' N 330.00 ft., S 66° 45' N 250.00 ft., thence N 0° 39' 44" N 1107.38 ft. along an existing fence to the center of said Section 15, thence S 89° 37' 42" N 1334.42 ft. along the 1/4 Section line, thence S 0° 07' 22" E 296.93 ft. along an existing fence, thence S 89° 37' 42" N 958.64 ft., thence N 1° 46' 38" E 585.34 ft. along an existing fence, thence S 89° 37' 42" N 389.30 ft. to the P.O.B.

571370 \$12.25  
FILED AND RECORDED FOR  
CARDON LAND TITLE COMPANY  
1972 MAY 23 PM 2 57  
IN BOOK 17 OF PLATS PAGE 40  
RUTH EAMES OLSEN  
WEBER COUNTY RECORDER  
DEPUTY COLT D. W. KELLY