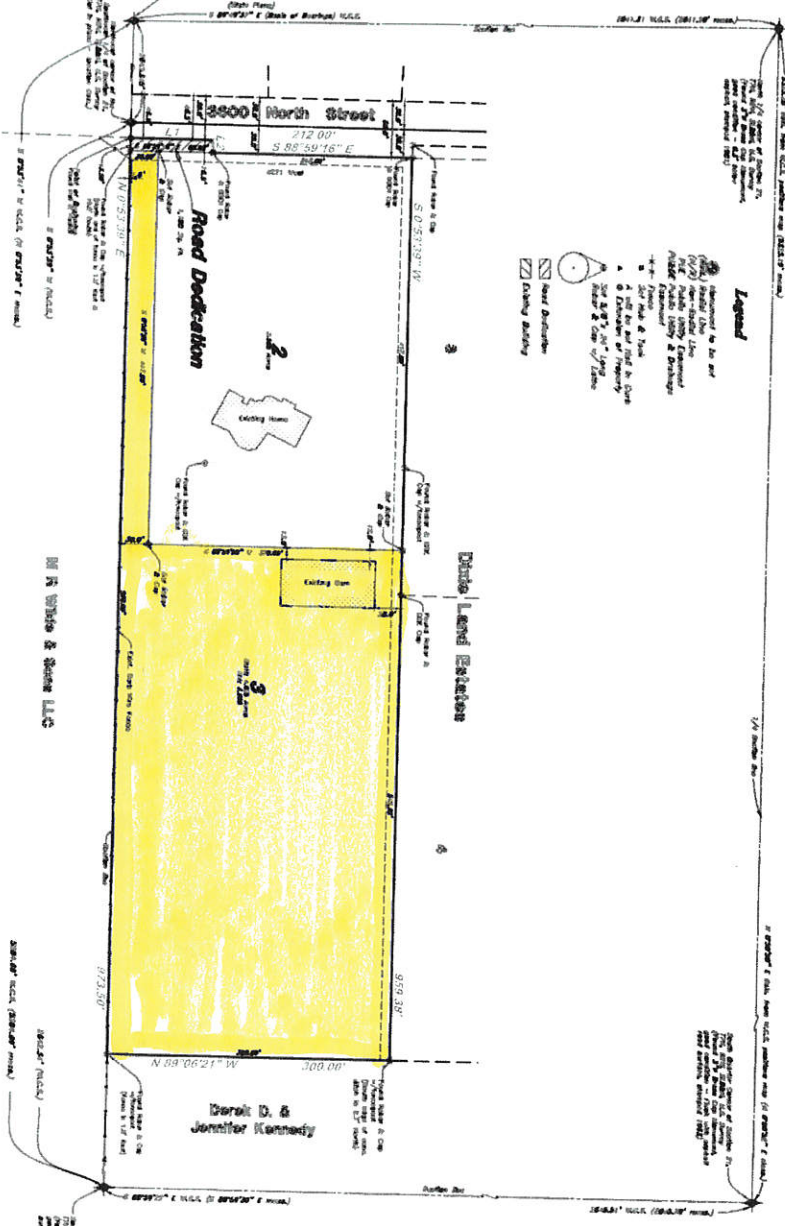




Stoker Subdivision Amendment

All of Lot 1 Stoker Subdivision, being
A part of the Southwest 1/4 of Section 21, 7th R2W, S84M US Survey
Weber County, Utah
January 2018



GREAT BASIN
746 SOUTH 1475 EAST CORNER, UTAH 84402
MANAGER: 313.816.1022 FAX: 313.816.1023
WWW.GREATBASIN.COM

AGRICULTURAL NOTE
This subdivision is not intended for agricultural use. Any agricultural use of the land is subject to the provisions of the applicable zoning ordinance.

NOTE
This subdivision is not intended for agricultural use. Any agricultural use of the land is subject to the provisions of the applicable zoning ordinance.

WEBER COUNTY ENGINEER
I hereby certify that the subdivision plat is a true and correct copy of the original as recorded in the office of the county clerk.

Lot	Area	Shape	Area
1	1.23	Rectangular	1.23
2	0.15	Irregular	0.15
3	0.15	Irregular	0.15
4	0.15	Irregular	0.15
5	0.15	Irregular	0.15

TAYLOR WEST WEBER WATER
This is to certify that the subdivision plat is a true and correct copy of the original as recorded in the office of the county clerk.

HOOPER WATER IMPROVEMENT DISTRICT
This is to certify that the subdivision plat is a true and correct copy of the original as recorded in the office of the county clerk.

WEBER COUNTY PLANNING COMMISSION APPROVAL
This is to certify that the subdivision plat is a true and correct copy of the original as recorded in the office of the county clerk.

WEBER COUNTY ATTORNEY
I have examined the records of the county clerk and find that the subdivision plat is a true and correct copy of the original as recorded in the office of the county clerk.

WEBER COUNTY SHERIFF
I have examined the records of the county clerk and find that the subdivision plat is a true and correct copy of the original as recorded in the office of the county clerk.

OWNER'S DECLARATION
I, the undersigned owner of the above described land, do hereby certify that the subdivision plat is a true and correct copy of the original as recorded in the office of the county clerk.

ACKNOWLEDGMENT
I, the undersigned, do hereby certify that the subdivision plat is a true and correct copy of the original as recorded in the office of the county clerk.

DISCUSSION
This subdivision is being amended to correct errors in the original subdivision plat. The amendment is necessary to ensure that the subdivision plat is a true and correct copy of the original as recorded in the office of the county clerk.

NECESSITY
The subdivision is being amended because of errors in the original subdivision plat. The amendment is necessary to ensure that the subdivision plat is a true and correct copy of the original as recorded in the office of the county clerk.

WEBER COUNTY HEALTH DEPARTMENT
I have examined the records of the county clerk and find that the subdivision plat is a true and correct copy of the original as recorded in the office of the county clerk.

WEBER COUNTY RECORDS
I have examined the records of the county clerk and find that the subdivision plat is a true and correct copy of the original as recorded in the office of the county clerk.

WEBER COUNTY CLERK
I have examined the records of the county clerk and find that the subdivision plat is a true and correct copy of the original as recorded in the office of the county clerk.