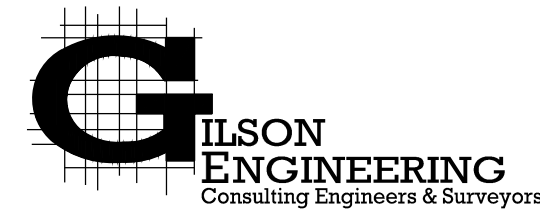


POWDER MOUNTAIN WATER & SEWER IMPROVEMENT DISTRICT

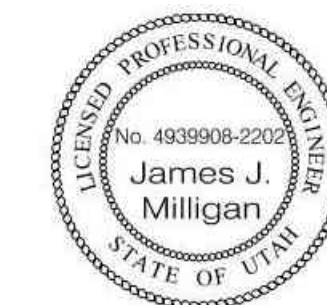
PIZZEL SPRING #3 & BOOSTER PUMP STATION #1 REHABILITATION PROJECT

POW.010.20
AUGUST 2020

LOCATED AT POWDER MOUNTAIN
WEBER COUNTY, UTAH



12401 SOUTH 450 EAST BUILDING C, UNIT 2, DRAPER, UT 84020
PHONE: (801) 571-9414 FAX: (801) 571-9449



James J. Milligan 08/19/2020

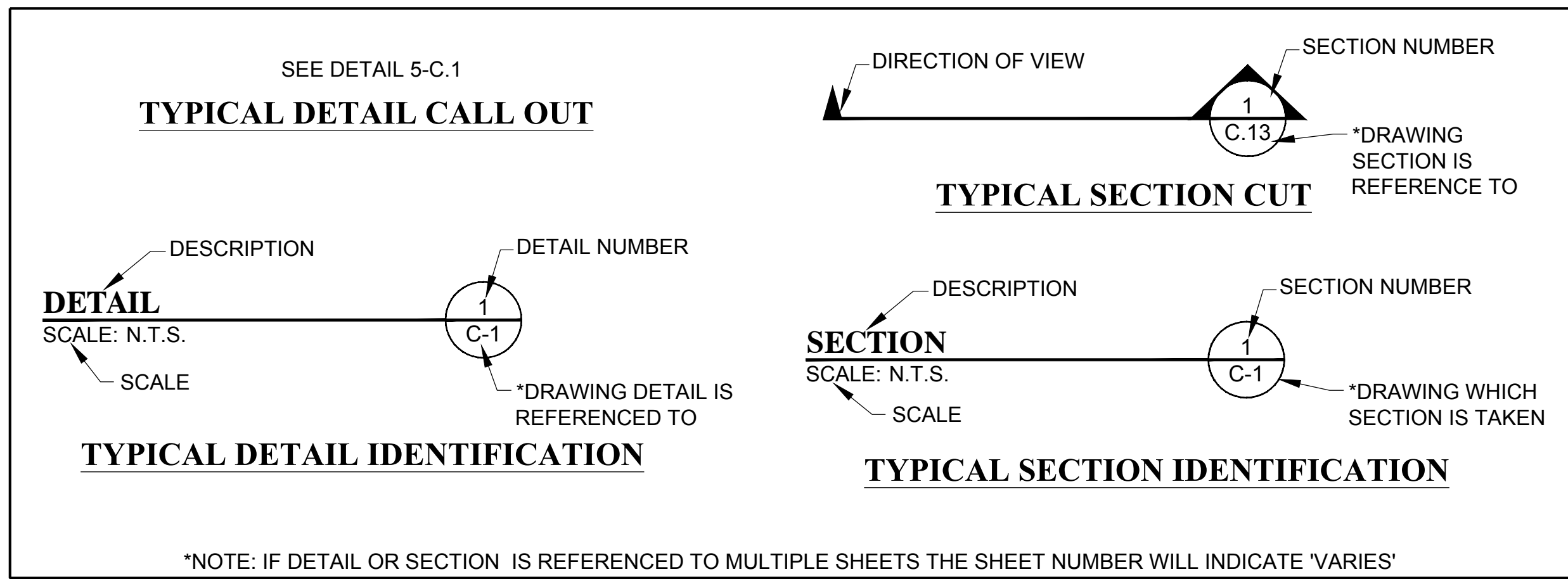
PIZZEL SPRING #3 & BOOSTER PUMP STATION #1 REHABILITATION PROJECT

POW.010.20

ABBREVIATIONS

ADJ	ADJUST
ADS	ADVANCE DRAINAGE SYSTEM
ARV	AIR RELEASE VALVE
BC	BAR AND CAP
BOW	BACK OF WALL
BVCE	BEGINNING VERTICAL CURVE ELEV.
BVCS	BEGINNING VERTICAL CURVE STATION
CB	CATCH BASIN
CBL	CABLE
CH	CHORD BEARING
CL	CENTERLINE
CMP	CORRUGATED METAL PIPE
CO	CLEAN OUT
CONC	CONCRETE
COR.	SECTION CORNER
D	DELTA ANGLE
DET	DETAIL
DIA	DIAMETER
DIP	DUCTILE IRON PIPE
DWG	DRAWING
EG	EXISTING GRADE
ELEV	ELEVATION
EOC	EDGE OF CONCRETE
EP	EDGE OF PAVEMENT
EVCE	END VERTICAL CURVE ELEV.
EVCS	END VERTICAL CURVE STATION
EW	EACH WAY
EX	EXISTING
FFE	FINISHED FLOOR ELEVATION
FG	FINISHED GRADE
FH	FIRE HYDRANT
FL	FLOW LINE
FO	FIBER OPTICS
FT	FOOT
GB	GRADE BREAK
HC	HANDICAP
HDPE	HIGH DENSITY POLY ETHYLENE
HP	HIGH POINT
INV.	INVERT
IRR	IRRIGATION
L.F.	LINEAR FEET
LIP	LIP OF CURB
LP	LOW POINT
LT.	LEFT
MAX.	MAXIMUM
MH	MANHOLE
MIN.	MINIMUM
MON	MONUMENT
NTS	NOT TO SCALE
OC	ON CENTER
OHP	OVER HEAD POWER
PC	POINT OF CURVE
PI	POINT OF INTERSECTION
PL	PROPERTY LINE
PP	POWER POLE
PRC	POINT OF REVERSE CURVE
PRV	PRESSURE REDUCING VALVE
PT	POINT OF TANGENCY
PUE	PUBLIC UTILITY EASEMENT
PVC	POLYVINYL CHLORIDE PIPE
R	RADIUS
ROW	RIGHT OF WAY
RT.	RIGHT
S	SEWER
SD	STORM DRAIN
SER	SOUTH END RADIUS
SSMH	SEWER MANHOLE
STA	STATION
STD	STANDARD
SW	SECONDARY WATER
TBC	TOP BACK OF CURB
TOA	TOP OF ASPHALT
TOE	TOE OF SLOPE
TOP	TOP OF SLOPE
TOW	TOP OF WALL
TYP	TYPICAL
UG	UNDER GROUND POWER
VPC	VERTICAL POINT OF CURVE
VPI	VERTICAL POINT OF INTERSECTION
VPT	VERTICAL POINT OF TANGENCY
W	WATER
WM	WATER METER
WV	WATER VALVE

IDENTIFICATION SYSTEM



LEGEND AND SYMBOLS

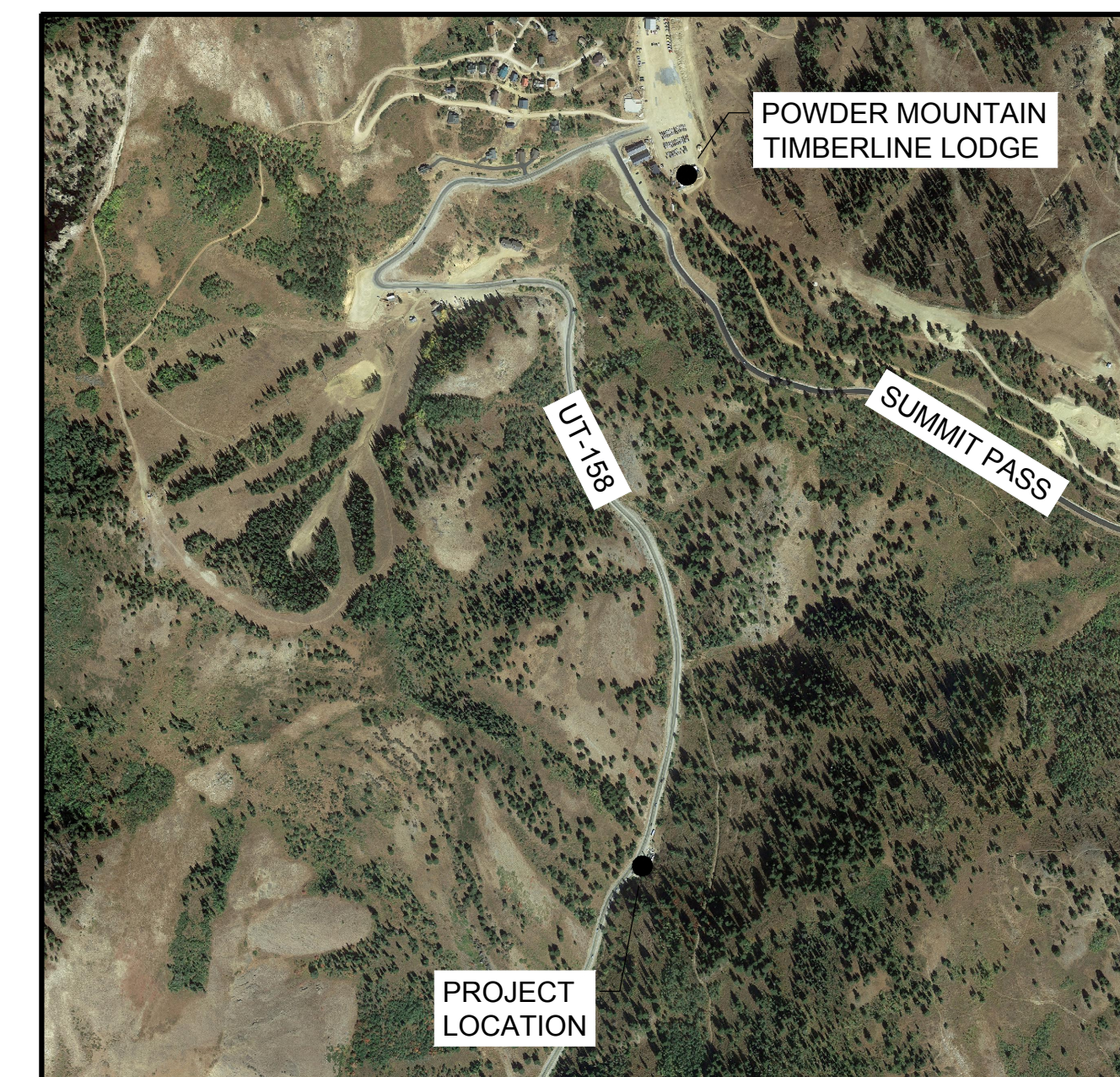
<p>1 SECTION CORNER & LINE (FOUND)</p> <p>BOUNDARY/PHASE LINE</p> <p>ADJACENT PL or LOT LINES</p> <p>RIGHT-OF-WAY LINE</p> <p>CENTERLINE of ROAD</p> <p>EASEMENT LINE</p> <p>CURB & GUTTER</p> <p>= EDGE OF ASPHALT</p> <p>FENCE</p> <p>DAYLIGHT- CUT</p> <p>DAYLIGHT- FILL</p> <p>PROPOSED INTERMEDIATE CONTOUR</p> <p>PROPOSED INDEX CONTOUR</p> <p>EXISTING INDEX CONTOUR</p> <p>EXISTING INTERMEDIATE CONTOUR</p> <p>DRAINAGE / DITCH CENTERLINE</p> <p>SANITARY SEWER MANHOLE & PIPE</p> <p>STORM DRAIN CLEAN OUT & PIPE</p> <p>CATCH BASIN</p> <p>4' COMBO BOX</p> <p>4' INLET</p>	<p>CULINARY WATER LINE & MANHOLE</p> <p>WATER VALVE</p> <p>= PROPOSED FIRE HYDRANT</p> <p>WATER METER</p> <p>SECONDARY WATER & STOP AND WASTE</p> <p>IRRIGATION BOX</p> <p>IRRIGATION VALVE</p> <p>POWER LINES & MANHOLE</p> <p>ELECTRIC METER</p> <p>UTIL-POLE</p> <p>ELECTRIC BOX</p> <p>POWERPOLE</p> <p>GUY WIRE</p> <p>TRAFFIC CONTROL BOX</p> <p>TRAFFIC SIGNAL</p> <p>GAS LINE & MANHOLE</p> <p>GAS-VALVE</p> <p>TELEPHONE LINE & MANHOLE</p> <p>TELEPHONE POLE</p> <p>TELEPHONE RISER</p> <p>TELEPHONE BOX</p>	<p>CABLE BOX</p> <p>CABLE TELEVISION LINE & MANHOLE</p> <p>FIBER OPTIC LINE & MARKER</p> <p>STREET LIGHT</p> <p>STREET SIGN</p> <p>TEST PIT</p> <p>WELL</p> <p>MAIL BOX</p> <p>SEWER TAG</p> <p>SD-TAG</p> <p>SPOT ELEVATION</p> <p>= PROPOSED ASPHALT</p> <p>= PROPOSED CONCRETE</p> <p>EXISTING ELEVATION</p> <p>PROPOSED ELEVATION</p>
--	--	---

*NOTE: ALL EXISTING FEATURES WILL BE IN A SHADED LINE

SHEET INDEX

	COVER SHEET
G.101	INDEX AND LEGEND
G.102	GENERAL NOTES
C.100	EXISTING SITE PLAN
C.101	PROPOSED SITE PLAN
P.101	PUMP HOUSE #1 PIPING PLANS
S.101	PUMP HOUSE #1 STRUCTURAL PLANS

LOCATION MAP



INDEX AND LEGEND

PIZZEL SPRING #3 & PUMP HOUSE #1 REHABILITATION PROJECT
POWDER MOUNTAIN WATER & SEWER IMPROVEMENT DISTRICT
WEBER COUNTY, UTAH

REVISION:

PROJ: # **POW.010**

G.101

DATE	REVISIONS	BY	COMMENTS
AUGUST 2020	G.101	JMB/JP	INDEX AND LEGEND

CHECKED: _____ APPROVED: _____

DATE: AUGUST 2020
DRAWING NAME: G.101 INDEX AND LEGEND
DESIGNED/DRAWN BY: JMB/JP

SCALE: 1" = 400'
SCALE MEASURES 1" ON FULL SIZE SHEET
ADJUST FOR HALF SIZE SHEETS

UTAH ENGINEERING
Professional Engineers & Surveyors
1640 S. 2000 W. SUITE 1000, UTAH JUNCTION, UT 84031
PHONE: (801) 521-9414 FAX: (801) 521-9448

POWDER MOUNTAIN WATER & SEWER IMPROVEMENT DISTRICT

GENERAL NOTES

1. THIS DESIGN IS AN ORIGINAL UNPUBLISHED WORK AND MAY NOT BE DUPLICATED, PUBLISHED AND/OR USED WITHOUT THE WRITTEN CONSENT OF GILSON ENGINEERING, INC.
2. THESE SHEETS - LISTED BY DRAWING INDEX, ALL ACCOMPANYING SPECIFICATIONS FOR MATERIALS, WORKMANSHIP QUALITY, AND NOTES HAVE BEEN PREPARED SOLELY FOR THE CONSTRUCTION AND FINISH OF PROJECT IMPROVEMENTS, COMPLETE AND READY FOR USE.
3. ALL WORK IS TO BE PERFORMED IN ACCORDANCE WITH PERTINENT JURISDICTIONAL CODES, RESTRICTIONS, COVENANTS, AND/OR ORDINANCES. ANY CONFLICT BETWEEN DESIGN AND REQUIREMENT SHALL BE REPORTED TO GILSON ENGINEERING, INC. BEFORE PROCEEDING. FAILURE TO DO SO VOIDS THE DESIGN.
4. ANY AND ALL PROPOSED CHANGE, MODIFICATIONS AND/OR SUBSTITUTION SHALL BE REPORTED TO GILSON ENGINEERING, INC. BEFORE PROCEEDING. ANY DEVIATION FROM THE CONTRACT DOCUMENTS, WITHOUT THE EXPRESS WRITTEN AUTHORIZATION OF GILSON ENGINEERING, INC. VOIDS THE DESIGN.
5. IN THE EVENT OF CONFLICT BETWEEN THE DESIGN DOCUMENTS AND/OR JURISDICTIONAL REQUIREMENTS, THE MORE RESTRICTIVE FROM THE STANDPOINT OF SAFETY AND PHYSICAL SECURITY SHALL APPLY.
6. ANY INSTALLATION OR WORK NECESSARY TO THE FUNCTIONING, SAFETY AND/OR PHYSICAL SECURITY OF DESIGN THAT IS TO BE ENCAPSULATED OR OTHERWISE PERMANENTLY OBSCURED FROM INSPECTION SHALL BE REPORTED TO GILSON ENGINEERING, INC. A MINIMUM OF TWO (2) WORKING DAYS BEFORE ENCLOSURE.
7. DESIGN IS GENERALLY PREDICATED UPON PROVISIONS OF THE CURRENT EDITION OF THE INTERNATIONAL BUILDING CODE AND/OR AMENDMENTS AS MAY HAVE BEEN LOCALLY ENACTED. THIS DESIGN AND ANY CONSEQUENT CONSTRUCTION SHALL ACCOMMODATE ALL REQUIREMENTS OF THE JURISDICTIONAL FIRE SAFETY/PREVENTION DISTRICT.
8. ANY DAMAGE, DISRUPTION OR COMPROMISE OF AMBIENT RIGHTS-OF-WAY, UTILITIES, OR ENVIRONMENTAL QUALITY SHALL BE IMMEDIATELY RECTIFIED BY THE CONTRACTOR TO THE SATISFACTION OF GILSON ENGINEERING, INC. AT NO COST TO THE OWNER.
9. THIS DESIGN PURPORTS TO PERMIT FULL ACCESS TO HANDICAPPED PERSONS AS PROVIDED FOR BY PROVISIONS OF FEDERAL LAW. ANY DEVIATION OR COMPROMISE SHALL BE REPORTED TO GILSON ENGINEERING, INC. FOR RESOLUTION.
10. ALL WORK SHALL BE INSPECTED BY GOVERNING AGENCIES IN ACCORDANCE WITH THEIR REQUIREMENTS. JURISDICTIONAL APPROVAL SHALL BE SECURED BEFORE PROCEEDING WITH WORK

UTILITY NOTES

1. COORDINATE ALL UTILITY CONNECTIONS TO TANK WITH PLUMBING PLANS, SITE PLAN AND TANK CONTRACTOR.
2. VERIFY DEPTH AND LOCATION OF ALL EXISTING UTILITIES PRIOR TO CONSTRUCTING ANY NEW UTILITY LINES. NOTIFY CIVIL ENGINEER OF ANY DISCREPANCIES OR CONFLICTS PRIOR TO ANY CONNECTIONS BEING MADE.
3. WATER LINES, VALVES, FIRE HYDRANTS, FITTINGS ETC. ARE TO BE CONSTRUCTED PER PLUMBING PLANS AND SITE PLAN (BY OTHERS). CONTRACTOR IS RESPONSIBLE TO CONSTRUCT ANY VERTICAL ADJUSTMENTS NECESSARY TO CLEAR SEWER, STORM DRAIN OR OTHER UTILITIES AS NECESSARY INCLUDING VALVE BOXES AND HYDRANT SPOOLS TO PROPER GRADE.

EROSION CONTROL NOTES

1. AT ALL TIMES DURING CONSTRUCTION, THE CONTRACTOR SHALL BE RESPONSIBLE FOR PREVENTING AND CONTROLLING EROSION DUE TO WIND AND RUNOFF. THE CONTRACTOR SHALL ALSO BE RESPONSIBLE FOR MAINTAINING THE EROSION CONTROL FACILITIES SHOWN ON THE PLAN.
2. CONTRACTOR SHALL BE RESPONSIBLE FOR CLEANING DRAINAGE AND EROSION CONTROL FACILITIES AS REQUIRED. STREETS SHALL BE KEPT CLEAN OF DEBRIS FROM TRAFFIC FROM THE SITE.
3. CONTRACTOR SHALL USE VEHICLE TRACKING CONTROL AT ALL LOCATIONS WHERE VEHICLES WILL ENTER OR EXIT THE SITE. CONTROL FACILITIES WILL BE MAINTAINED WHILE CONSTRUCTION IS IN PROGRESS, MOVED WHEN NECESSARY, AND REMOVED WHEN THE SITE IS PAVED.
4. INLET PROTECTION DEVICES SHALL BE INSTALLED IMMEDIATELY UPON INDIVIDUAL INLETS BECOMING FUNCTIONAL.
5. ALL WASH WATER (CONCRETE TRUCKS, VEHICLE CLEANING, ETC.) SHALL BE DISPOSED IN A MANNER THAT PREVENTS CONTACT WITH STORM WATER DISCHARGES FROM THE SITE.
6. FUGITIVE DUST AREAS SHALL BE CONTROLLED BY SPRAYING WATER ON THE DRY AREAS OF THE SITE.
7. NO RUBBISH, TRASH, GARBAGE OR OTHER SUCH MATERIALS SHALL BE DISCHARGED INTO DRAINAGE DITCHES OR WATERS OF THE STATE.
8. ALL MATERIALS SPILLED, DROPPED, WASHED OR TRACKED FROM VEHICLES ONTO ROADWAYS OR INTO STORM DRAINS MUST BE REMOVED IMMEDIATELY.
9. THE CONTRACTOR SHALL BE RESPONSIBLE FOR ADJUSTING THE EROSION CONTROL MEASURES (SILT FENCES, STRAW BALES, ETC.) DUE TO GRADE CHANGES OR OTHER UNFORESEEN CONDITIONS DURING DEVELOPMENT OF THE PROJECT.

CONSTRUCTION NOTES

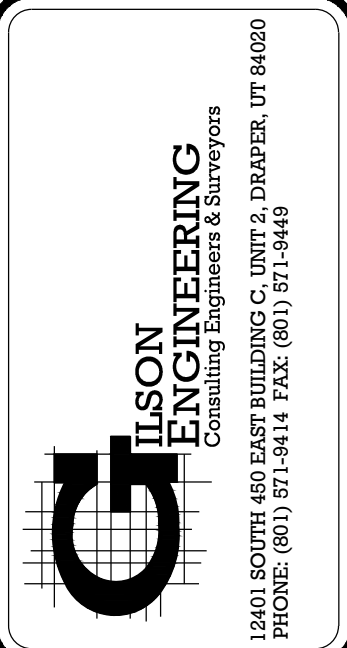
1. ALL WORK WITHIN THE SITE TO CONFORM TO THE CURRENT CITY STANDARDS AND SPECIFICATIONS.
2. THE CONTRACTOR SHALL BE RESPONSIBLE FOR MEETING ALL OF THE REQUIREMENTS ESTABLISHED FOR SAFE TRENCHING. (SEE OSHA AND UOSHA REQUIREMENTS, LATEST EDITIONS).
3. CONTRACTOR SHALL LOCATE ALL UNDERGROUND UTILITIES BEFORE LAYING PIPE WITHIN 200 FEET OF SAID UTILITIES WHICH MAY BE EXPOSED, DAMAGED OR CROSSED AS SHOWN ON THE DRAWINGS OR AS "BLUE STAKED". THE CONTRACTOR WILL MAKE ARRANGEMENTS WITH THE UTILITY COMPANY TO MOVE THE UTILITY IF NECESSARY OR OBTAIN PERMISSION FROM THE PROJECT ENGINEER TO MODIFY GRADES OF PROJECT LINES IN ORDER TO GO AROUND EXISTING UTILITIES.
4. SEWER MAINS, WATER MAINS, GAS MAINS AND OTHER UTILITIES ARE NOT SHOWN ON THE TANK DETAIL PLANS. REFER TO SITE/UTILITY PLANS (BY OTHERS). THE CONTRACTOR SHALL DETERMINE THE ACTUAL LOCATION OF EXISTING SERVICE CONNECTIONS AND UTILITIES, VERIFY THE HORIZONTAL AND VERTICAL LOCATIONS AND TAKE THE NECESSARY STEPS TO AVOID THEM.
5. SPECIFIC INFORMATION PROVIDED IN THE CONTRACT DOCUMENTS SHALL SUPERSEDE ITEMS COVERED IN THESE DRAWINGS.

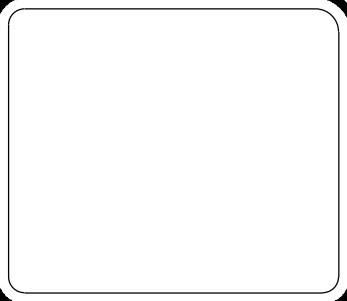


CAUTION NOTICE TO CONTRACTOR

THE CONTRACTOR IS SPECIFICALLY CAUTIONED THAT THE LOCATION AND/OR ELEVATION OF EXISTING UTILITIES AS SHOWN ON THESE PLANS ARE BASED ON RECORDS OF THE VARIOUS UTILITY COMPANIES AND, WHERE POSSIBLE, MEASUREMENTS TAKEN IN THE FIELD. THE INFORMATION IS NOT TO BE RELIED ON AS BEING EXACT OR COMPLETE. THE CONTRACTOR MUST CALL THE APPROPRIATE UTILITY COMPANY AT LEAST 48 HOURS BEFORE ANY EXCAVATION TO REQUEST EXACT FIELD LOCATION OF UTILITIES. IT SHALL BE THE RESPONSIBILITY OF THE CONTRACTOR TO RELOCATE ALL EXISTING UTILITIES WHICH CONFLICT WITH THE PROPOSED IMPROVEMENTS SHOWN ON THE PLANS.

THE CONTRACTOR AGREES THAT HE SHALL ASSUME SOLE AND COMPLETE RESPONSIBILITY FOR JOB SITE CONDITIONS DURING THE COURSE OF CONSTRUCTION OF THIS PROJECT, INCLUDING SAFETY OF ALL PERSONS AND PROPERTY: THAT THIS REQUIREMENT SHALL APPLY CONTINUOUSLY AND NOT BE LIMITED TO THE NORMAL WORKING HOURS; AND THE CONTRACTOR SHALL DEFEND, INDEMNIFY, AND HOLD THE OWNER AND THE ENGINEER HARMLESS FROM ANY AND ALL LIABILITY, REAL OR ALLEGED, IN CONNECTION WITH THE PERFORMANCE OF WORK ON THIS PROJECT, EXCEPTING FOR LIABILITY ARISING FROM SOLE NEGLIGENCE OF THE OWNER OR THE ENGINEER.





DATE	REVISIONS
AUGUST 2020	
DRAWING NAME	BY/COMMENTS
G.102	
GENERAL NOTES	
DESIGNED/DRAWN BY:	
JMBP	
CHECKED:	
APPROVED:	

1" SCALE MEASURES IF ON FULL SIZE SHEET
ADJUST FOR HALF SIZE SHEETS

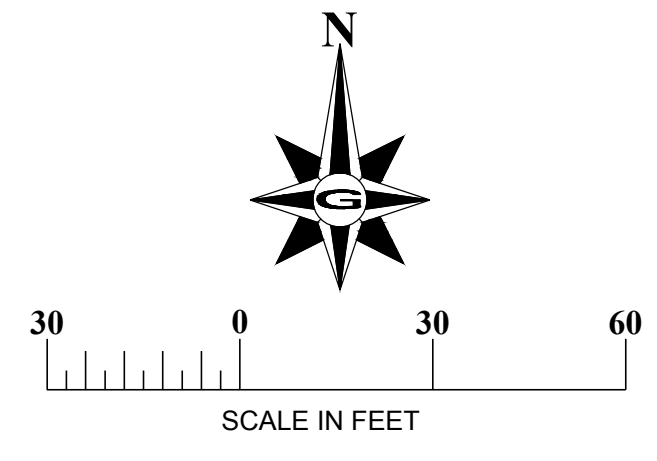
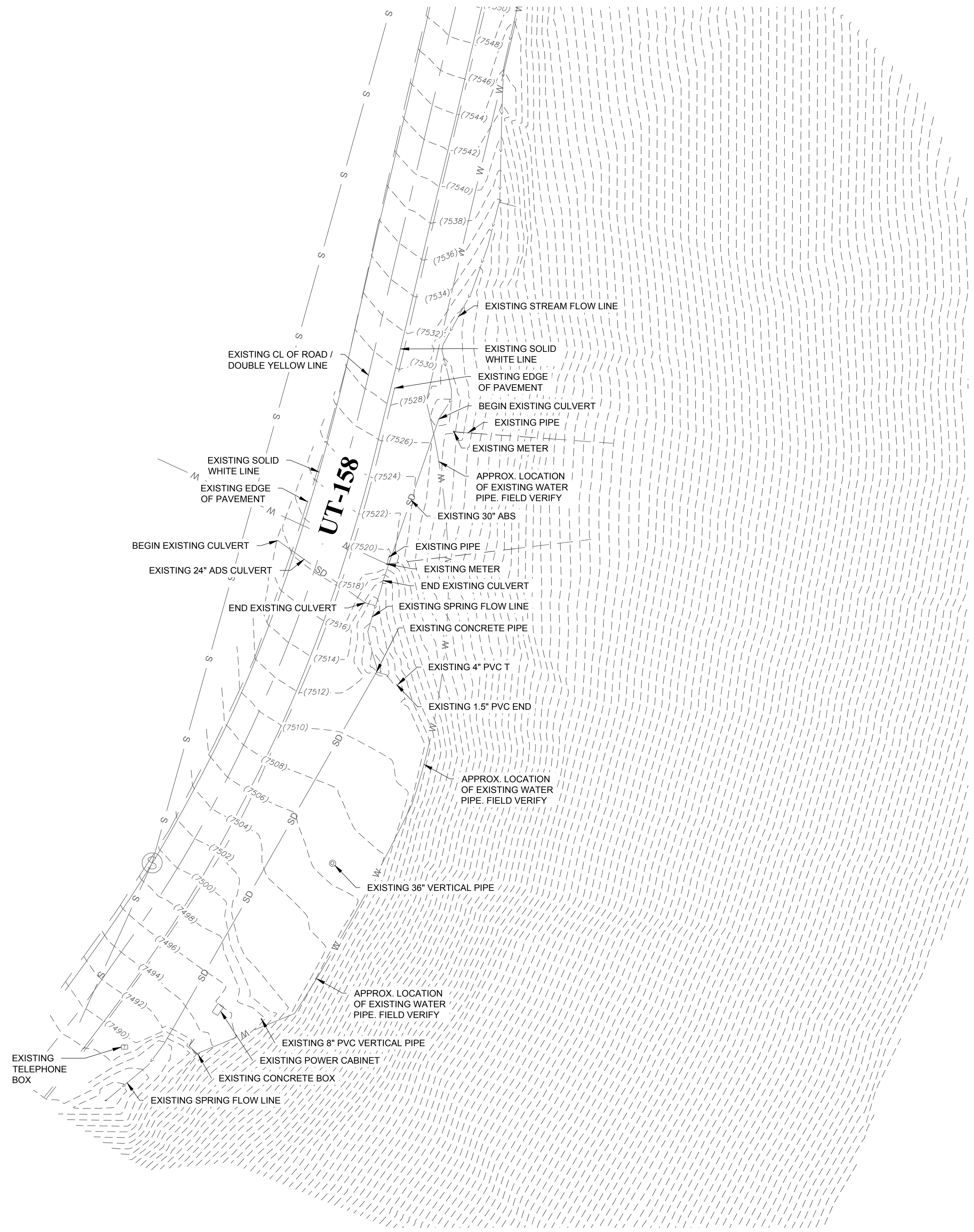
GENERAL NOTES

PIZZEL SPRING #3 & PUMP HOUSE #1 REHABILITATION PROJECT
POWDER MOUNTAIN WATER & SEWER IMPROVEMENT DISTRICT
WEBER COUNTY, UTAH

REVISION:

PROJ. # **POW.010**

G.102



DISCLAIMER NOTE
 UTILITY LOCATIONS SHOWN HEREON ARE APPROXIMATE ONLY. IT SHALL BE THE CONTRACTOR'S RESPONSIBILITY TO DETERMINE THE EXACT HORIZONTAL AND VERTICAL LOCATION OF ALL EXISTING UNDERGROUND AND OVERHEAD UTILITIES PRIOR TO COMMENCING CONSTRUCTION. NO REPRESENTATION IS MADE THAT ALL EXISTING UTILITIES ARE SHOWN HEREON. THE ENGINEER ASSUMES NO RESPONSIBILITY FOR UTILITIES NOT SHOWN OR UTILITIES NOT SHOWN IN THEIR PROPER LOCATION.



GILSON ENGINEERING
 CONSULTING ENGINEERS & SURVEYORS
 8401 SOUTH 405 WEST, SUITE 200, OGDEN, UT 84403
 PHONE: (801) 871-8414 FAX: (801) 871-5448



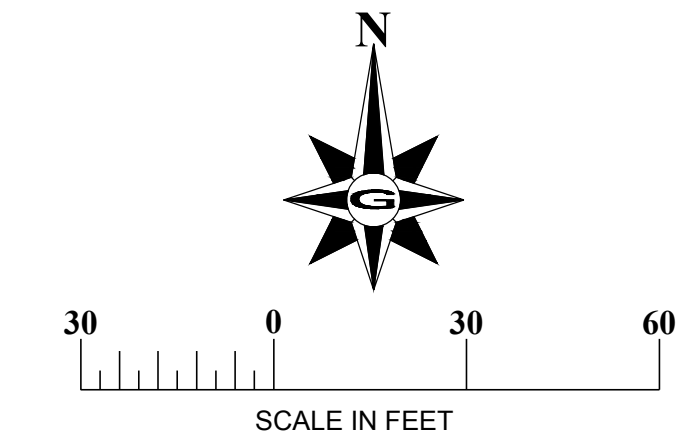
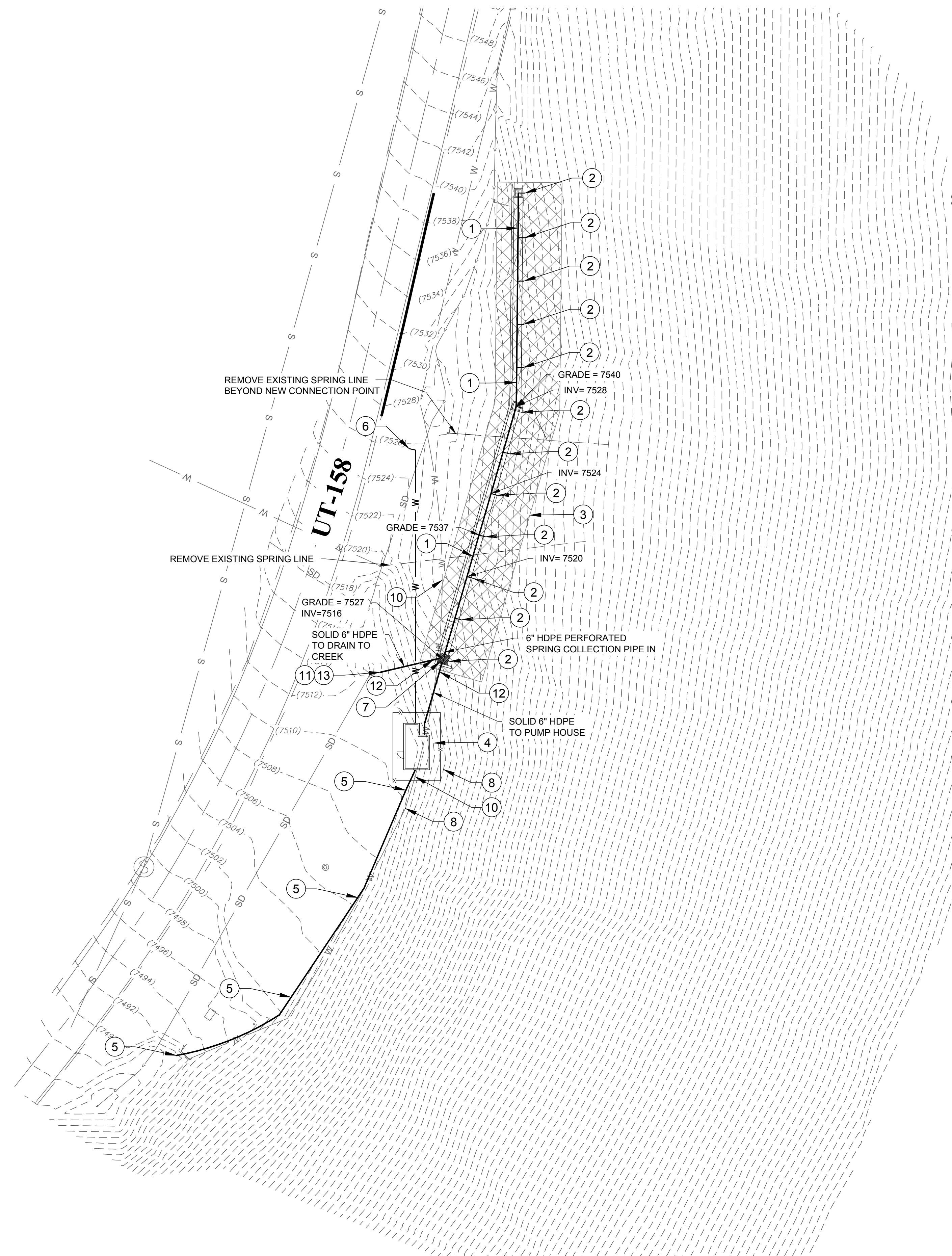
REV	DATE	BY	COMMENTS

DATE: AUGUST 2020	DESIGNED/DRAWN BY: JMB/JP	CHECKED: T	APPROVED: G
DRAWING NAME: C.100 EXISTING SITE	DESIGNED/DRAWN BY: JMB/JP	CHECKED: T	APPROVED: G

REVISIONS: _____
 SCALE MEASURES IN FULL SIZE SHEET
 ADJUST FOR HALF SIZE SHEETS

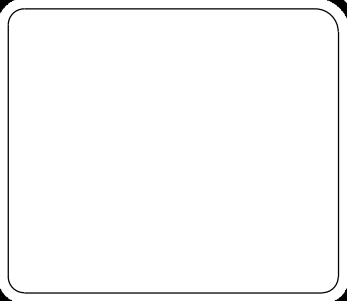
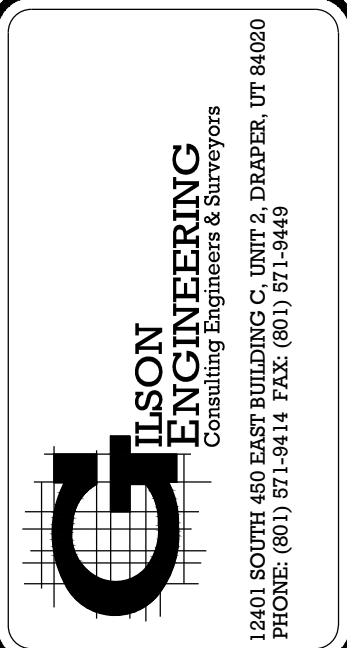
EXISTING SITE
 PIZZEL SPRING #3 & PUMP HOUSE #1 REHABILITATION PROJECT
 POWDER MOUNTAIN WATER & SEWER IMPROVEMENT DISTRICT
 WEBER COUNTY, UTAH

REVISION: _____
 PROJ. # **POW.010**
C.100



CONSTRUCTION KEY NOTES

- 1 CONSTRUCT 6" PERFORATED HDPE (CULINARY GRADE) COLLECTOR LINE. 1/2" Ø PERFORATIONS @ 6" O.C. LOCATED AT 8-O'CLOCK AND 4-O'CLOCK.
- 2 CONSTRUCT 6" PERFORATED HDPE (CULINARY GRADE) PIPE. 3" BRANCH LINE @ 1% WITH SOLID CAP AT TERMINAL END.
- 3 PIZZEL SPRING #3 DEVELOPMENT AREA
- 4 PUMP HOUSE #1
- 5 INSTALL 6" PVC FLOOR DRAIN LINE AND OVERFLOW PIPE. DAYLIGHT AT EXISTING SPRING FLOW LINE.
- 6 CONSTRUCT 6" WATERLINE FROM PUMP HOUSE CONNECTED TO EXISTING 6" WATERLINE
- 7 INSTALL 4"x4" PRECAST CONCRETE SPRING BOX WITH EJ HATCH.
- 8 INSTALL BARBED WIRE FENCE AROUND PERIMETER OF BUILDING. 5' CLEAR
- 9 CUT CAP AND ABANDON IN PLACE EXISTING WATER LINE TO THE SOUTH.
- 10 EXISTING WATERLINE TO BE REMOVED AND DISPOSED OF WHEN ENCOUNTERED DURING CONSTRUCTION ACTIVITIES.
- 11 INSTALL 6" SOLID HDPE (CULINARY GRADE) MAINTENANCE BYPASS PIPE WITH #4 MESH SCREEN AT INVERT OUT.
- 12 INSTALL 6" GATE VALVE WITH RISER TO FINISH GRADE OUTSIDE OF BOX.
- 13 CONSTRUCT CONCRETE HEADWALL. 3' x 3' x 12" THICK. PROVIDE 1"-Ø MIN. VERTICAL DROP FROM INVERT OF SPRING DRAIN PIPE TO TOP OF EXISTING RCP PIPE.



REV	DATE	BY	COMMENTS

DATE: AUGUST 2020	DESIGNED BY: C101	CHECKED BY: JMBP
DRAWING NAME: PROPOSED SITE	DESIGNED/DRAWN BY: JMBP	APPROVED BY: [Signature]

PROPOSED SITE

PIZZEL SPRING #3 & PUMP HOUSE #1 REHABILITATION PROJECT
POWDER MOUNTAIN WATER & SEWER IMPROVEMENT DISTRICT
WEBER COUNTY, UTAH

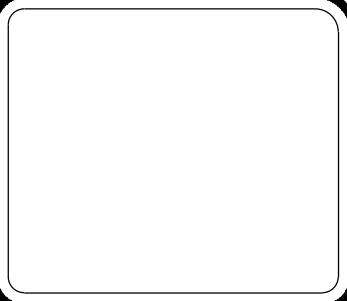
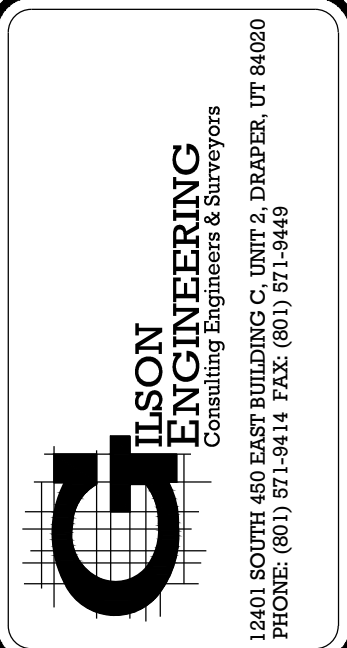
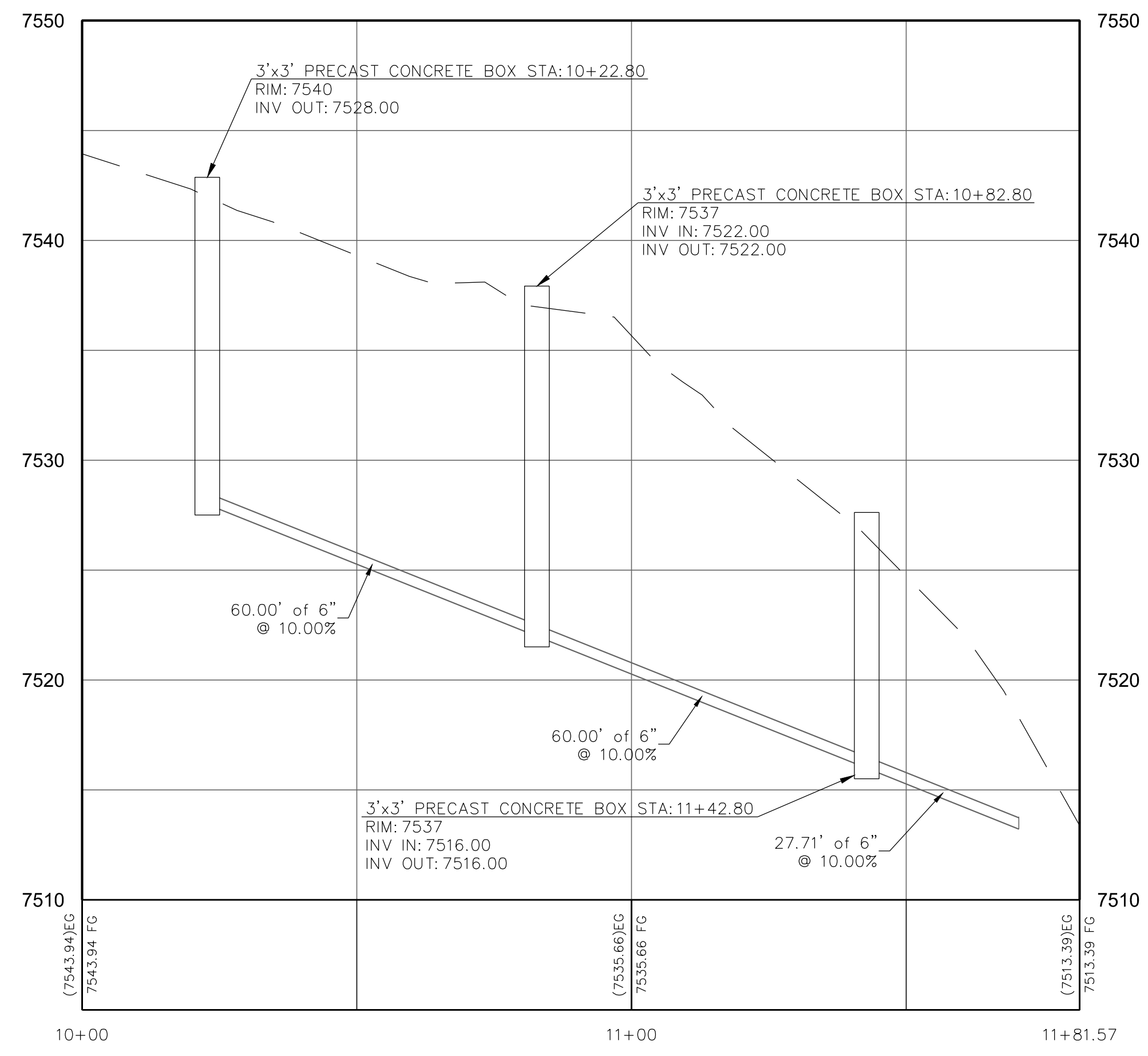
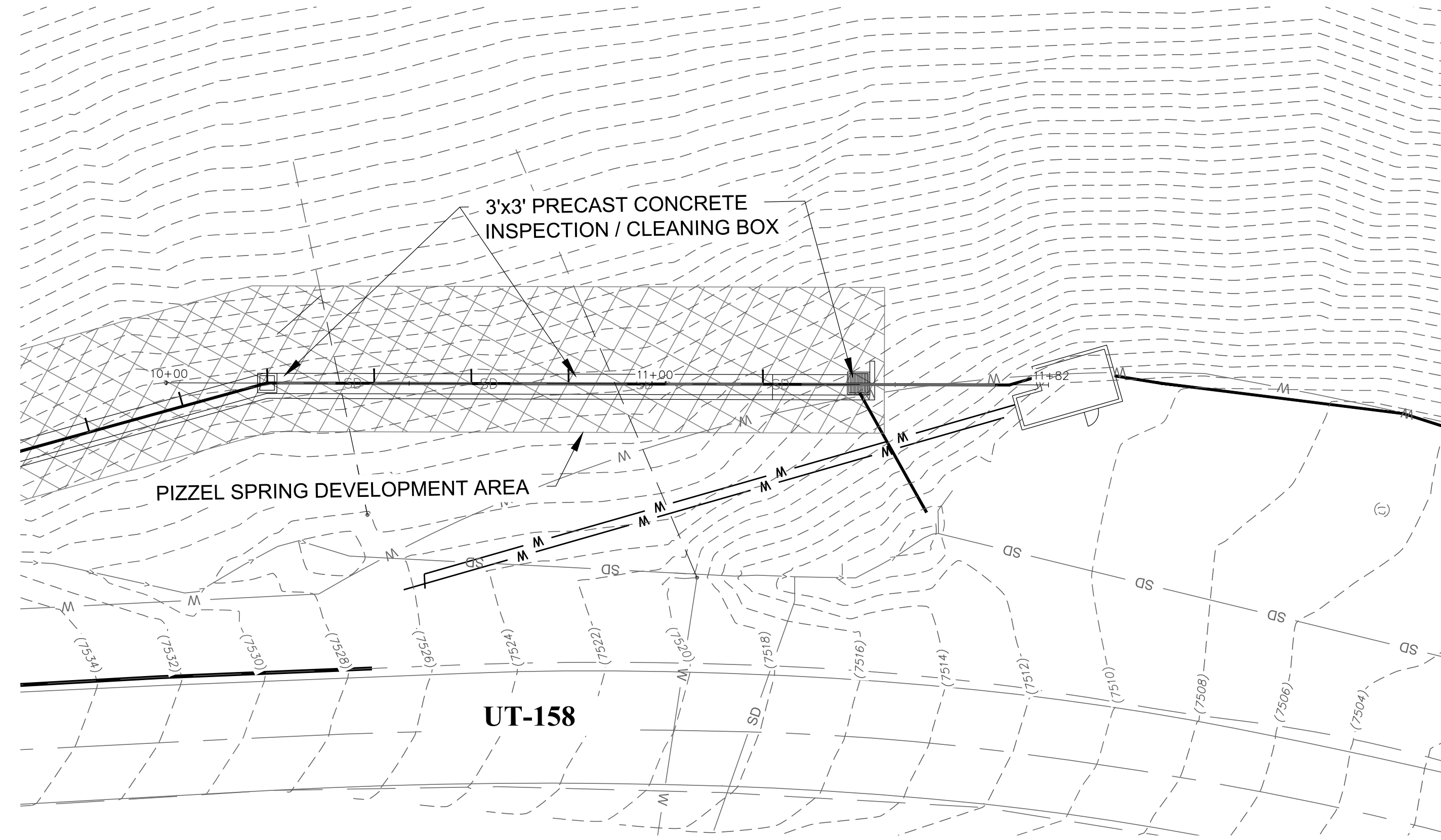
REVISION:

PROJ # **POW.010**

C.101

DISCLAIMER NOTE
UTILITY LOCATIONS SHOWN HEREON ARE APPROXIMATE ONLY. IT SHALL BE THE CONTRACTOR'S RESPONSIBILITY TO DETERMINE THE EXACT HORIZONTAL AND VERTICAL LOCATION OF ALL EXISTING UNDERGROUND AND OVERHEAD UTILITIES PRIOR TO COMMENCING CONSTRUCTION. NO REPRESENTATION IS MADE THAT ALL EXISTING UTILITIES ARE SHOWN HEREON. THE ENGINEER ASSUMES NO RESPONSIBILITY FOR UTILITIES NOT SHOWN OR UTILITIES NOT SHOWN IN THEIR PROPER LOCATION.





REV	DATE	BY	COMMENTS

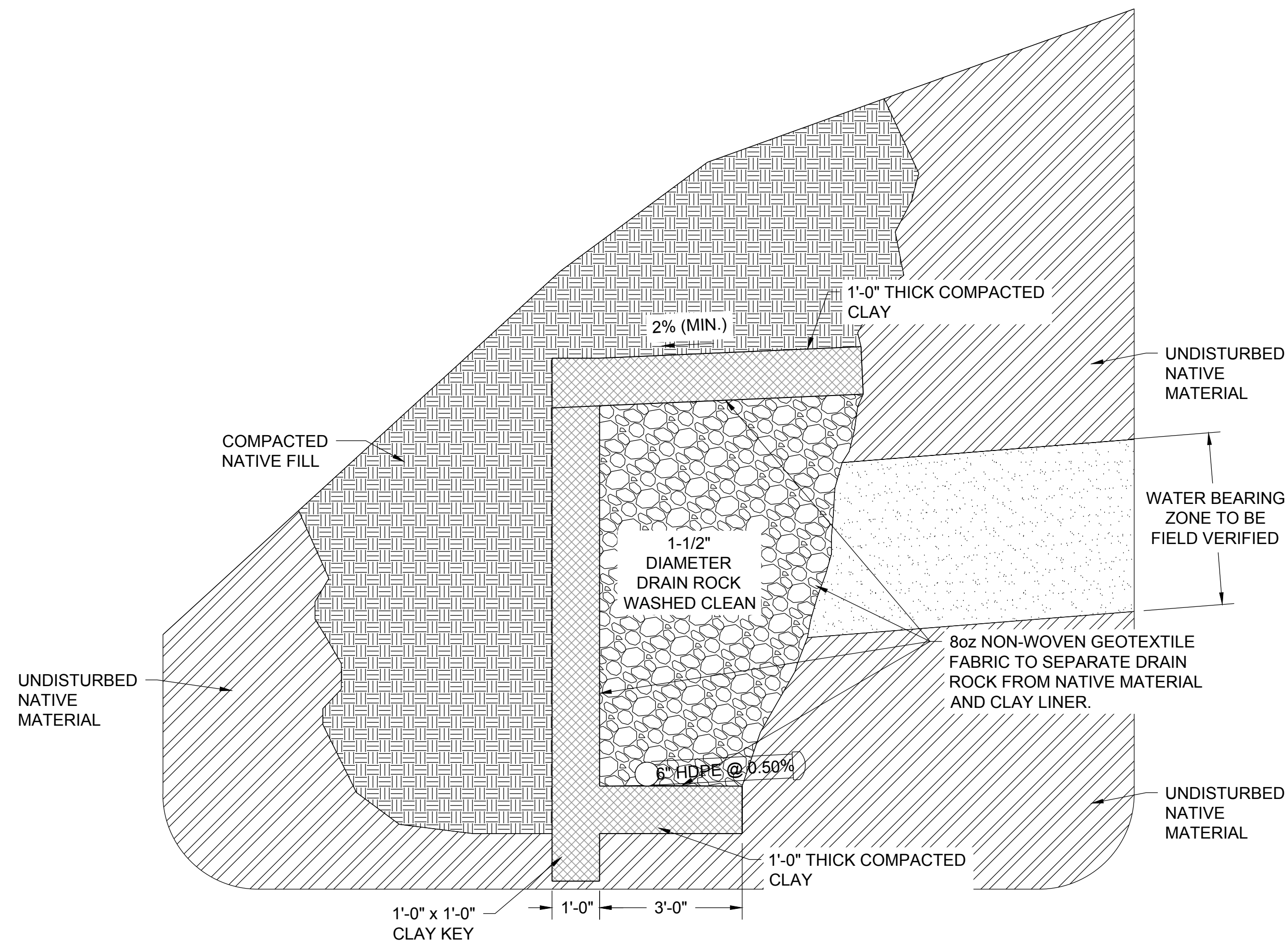
1" SCALE MEASURES 1" ON FULL SIZE SHEET
ADJUST FOR HALF SIZE SHEETS

DATE: AUGUST 2020
DRAWING NAME: PP.010 PLAN & PROFILE
DESIGNED/DRAWN BY: JMB/BP
CHECKED: APPROVED: 0

PLAN & PROFILE MAIN LINE: 10+00 - 11+82
PIZZEL SPRING #3 & PUMP HOUSE #1 REHABILITATION PROJECT
POWDER MOUNTAIN WATER & SEWER IMPROVEMENT DISTRICT
WEBER COUNTY, UTAH

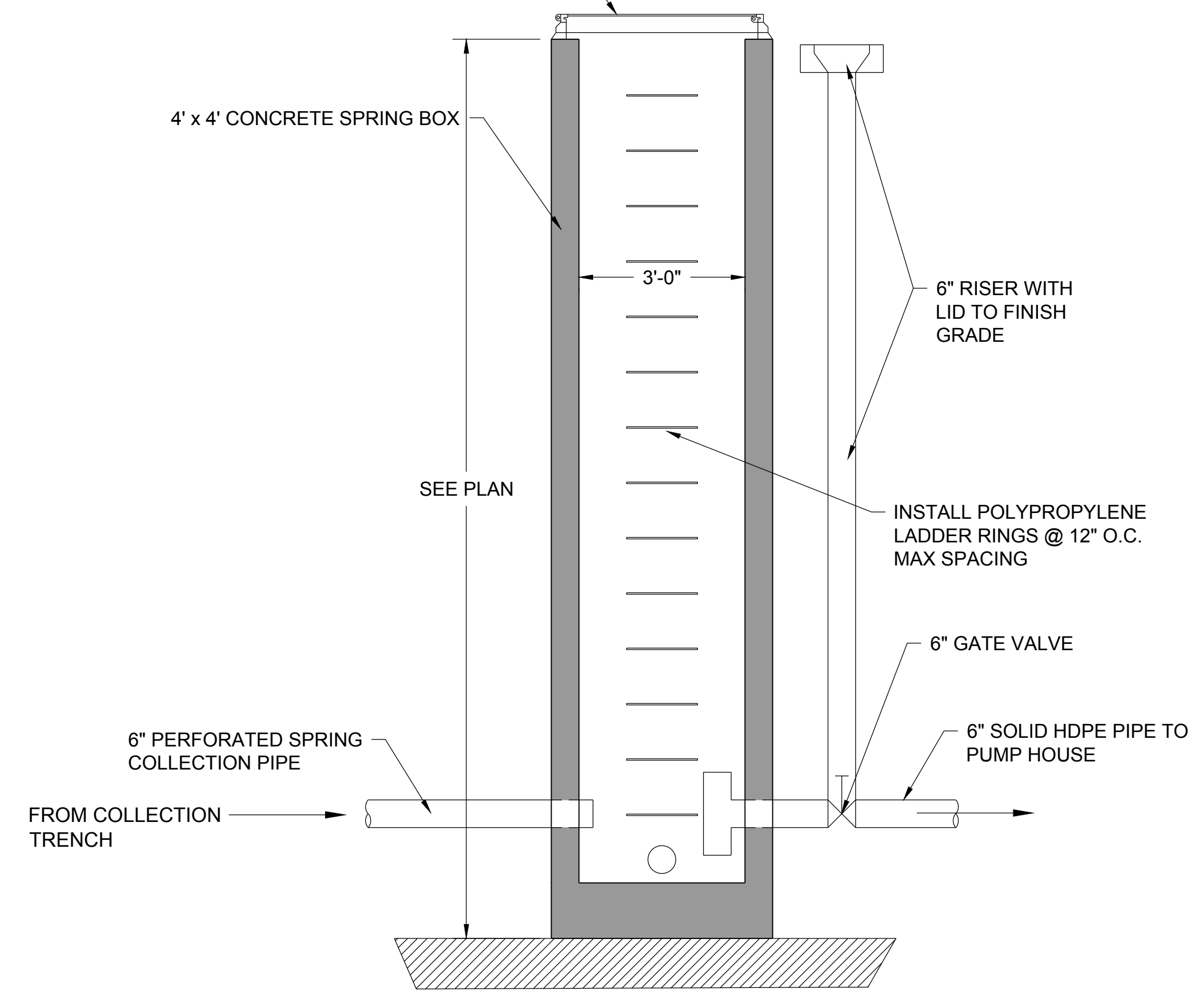
REVISION:
PROJ: # **POW.010**

PP.101

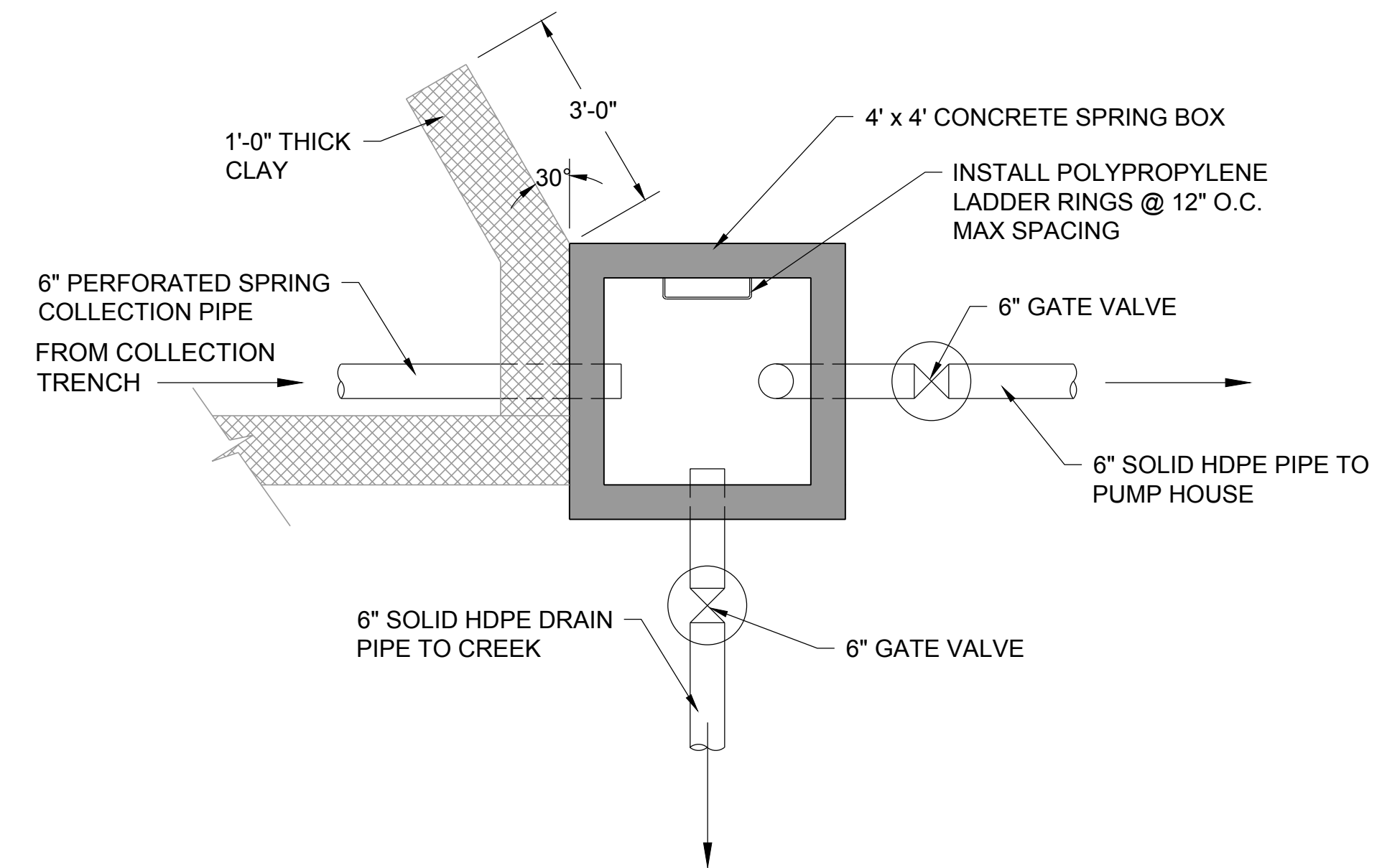


**MAIN COLLECTION TRENCH
DETAIL SECTION VIEW**
SCALE: 1" = 2'
A
D.101

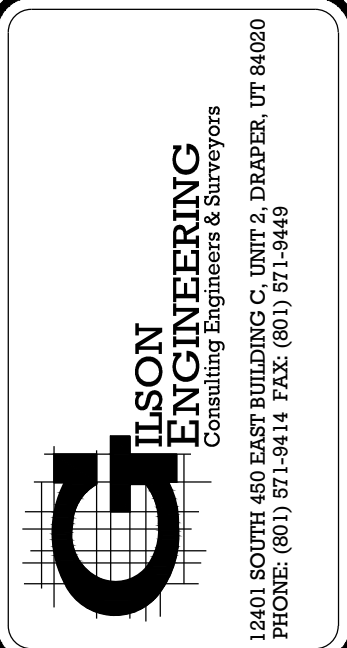
ALUMINUM EJ HATCH TYPE EP ROOF SCUTTLE WITH FULLY ENCLOSED CURB (12" HIGH) (ALL STAINLESS STEEL HARDWARE) ELIMINATE INTERIOR & EXTERIOR HANDLES AND PROVIDE A CONCEALED PADLOCK HASP.



**4' COLLECTION SPRING BOX
PLAN SECTION VIEW**
SCALE: NTS
D.101



**4' COLLECTION SPRING BOX
TOP SECTION VIEW**
SCALE: NTS
D.101



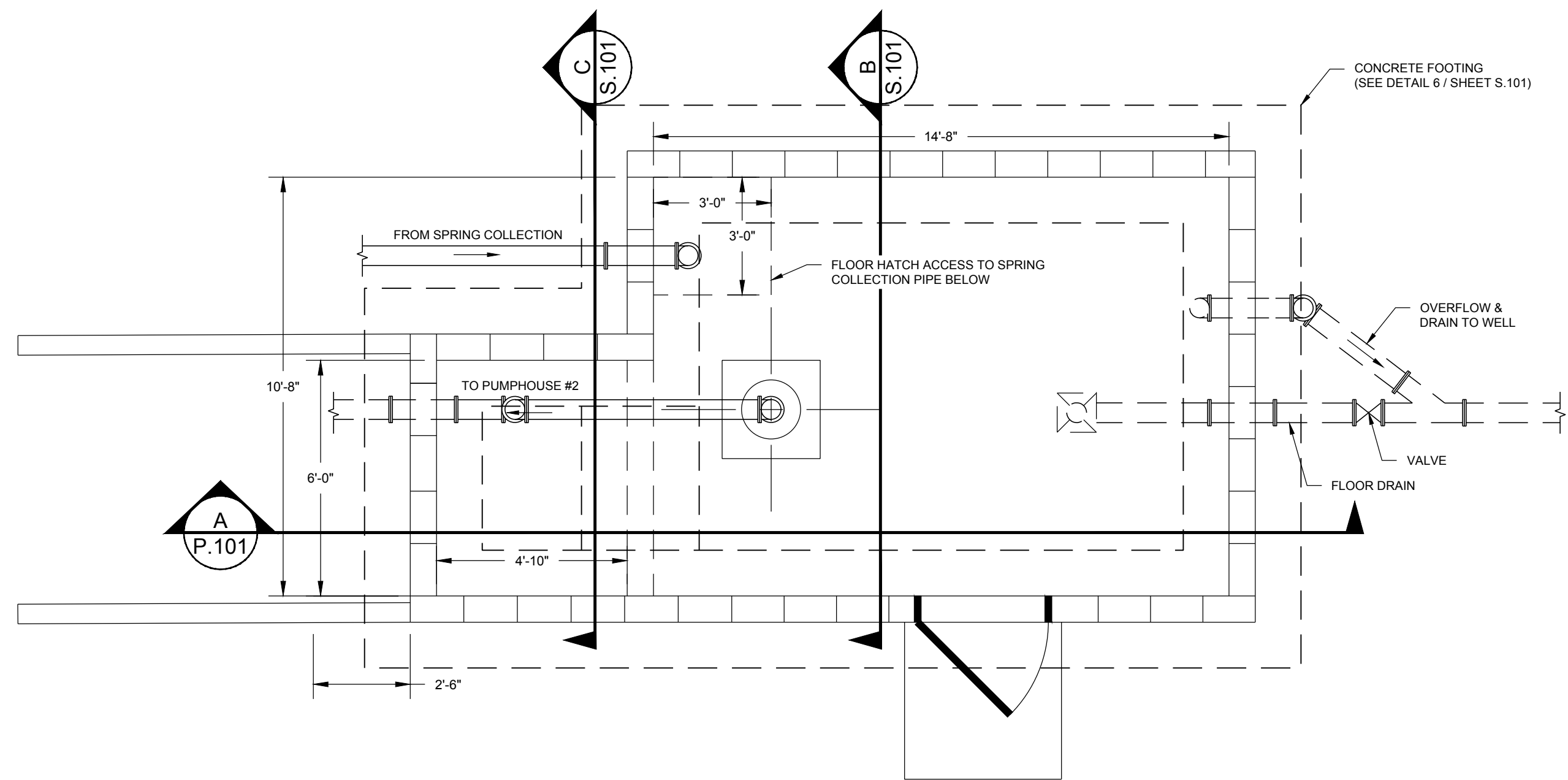
REVISIONS

DATE: AUGUST 2020	DESIGNED/DRAWN BY: JMB/BP	CHECKED: T	APPROVED: [Signature]
DRAWING NAME: D.101 SPRING COLLECTION TRENCH DETAILS	1" SCALE MEASURES 1" ON FULL SIZE SHEET / ADJUST FOR HALF SIZE SHEETS		

SPRING COLLECTION TRENCH DETAILS
PIZZEL SPRING #3 & PUMP HOUSE #1 REHABILITATION PROJECT
POWDER MOUNTAIN WATER & SEWER IMPROVEMENT DISTRICT
WEBER COUNTY, UTAH

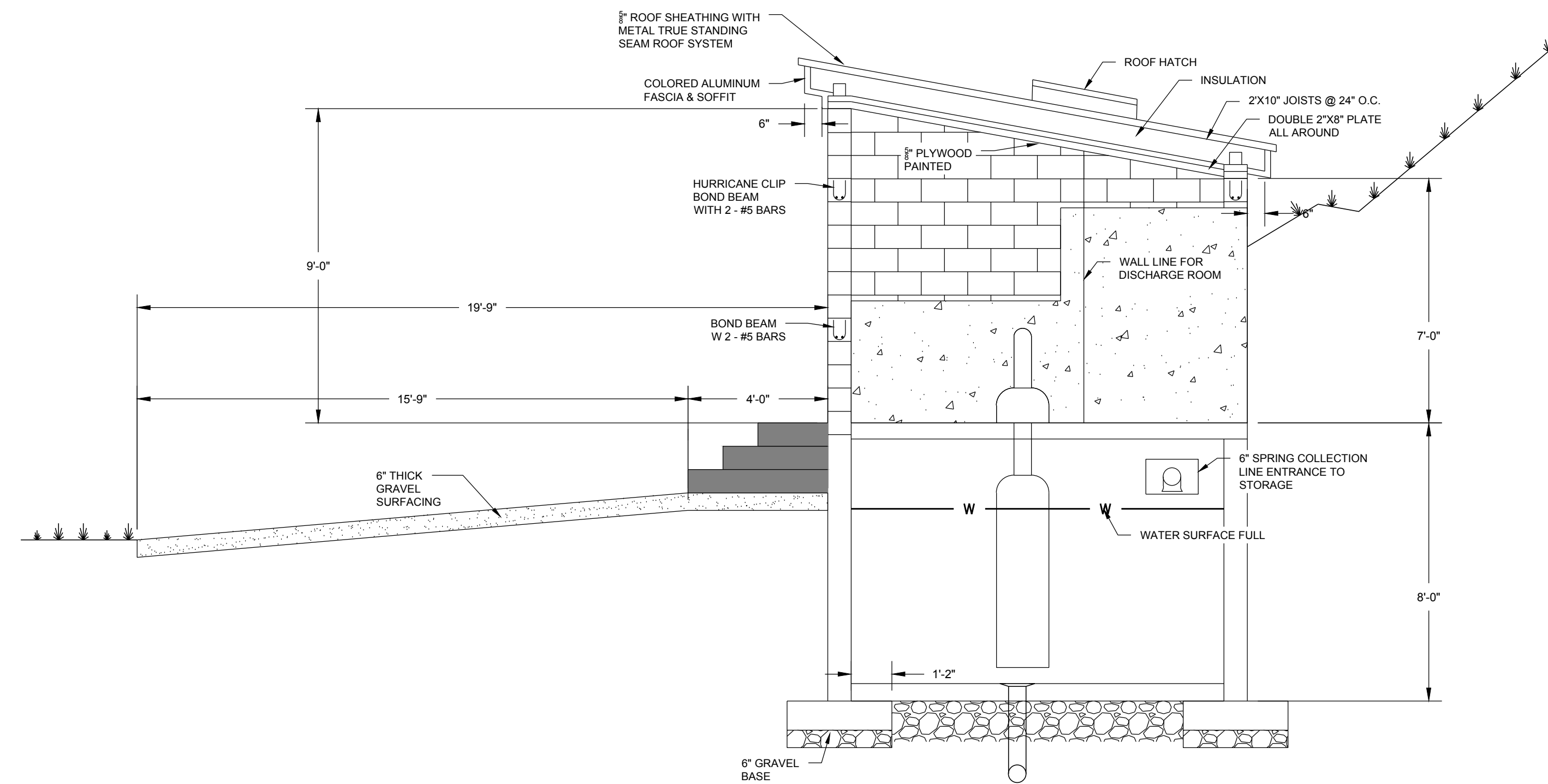
PROJ: # **POW.010**

D.101



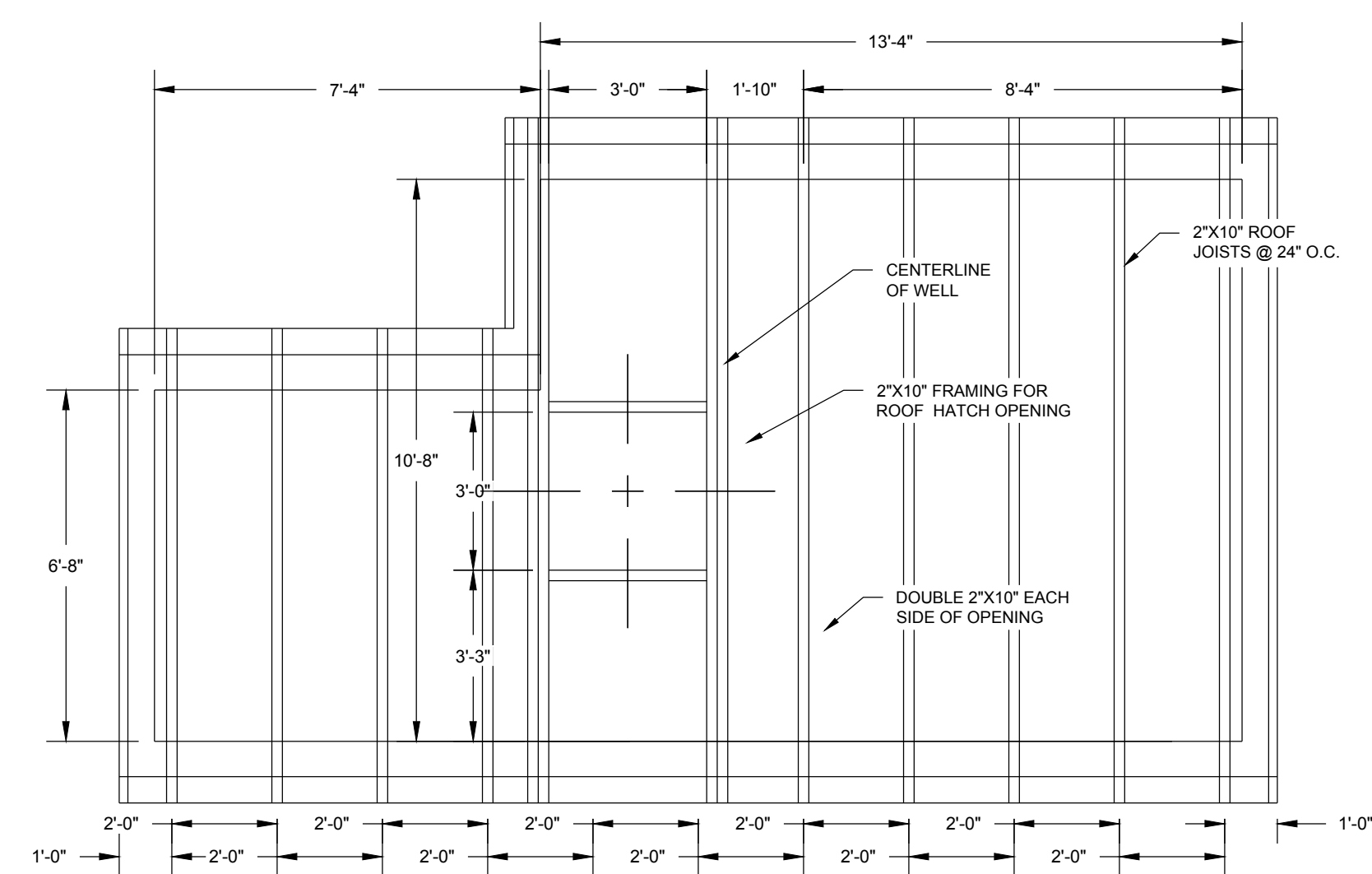
**PUMPHOUSE WELL #1
FLOOR PLAN**
SCALE: 1" = 3'

1
S.101



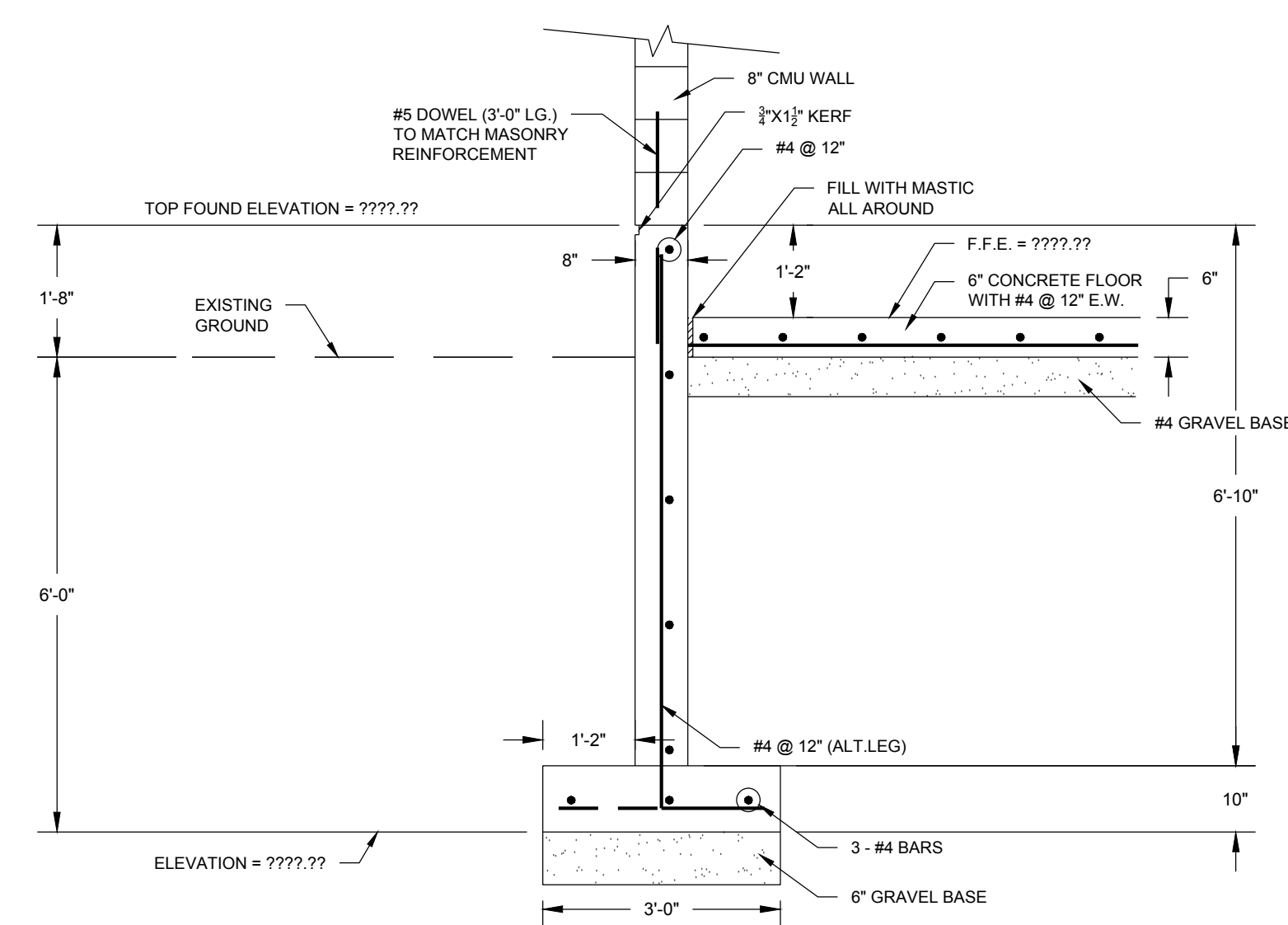
**PUMPHOUSE WELL #1
SECTION 'B'**
SCALE: 1" = 3'

B
S.101



**PUMPHOUSE WELL #1
ROOF PLAN**
SCALE: 1" = 3'

3
S.101



**PUMPHOUSE WELL #1
FOOTING DETAIL**
SCALE: 1" = 2'

C
S.101

BOOSTER STATION STRUCTURAL PLANS

PIZZEL SPRING #3 & PUMP HOUSE #1 REHABILITATION PROJECT
POWDER MOUNTAIN WATER & SEWER IMPROVEMENT DISTRICT
WEBER COUNTY, UTAH

REVISION:

PROJ. # **POW.010**

S.101

DATE	REVISIONS
AUGUST 2020	

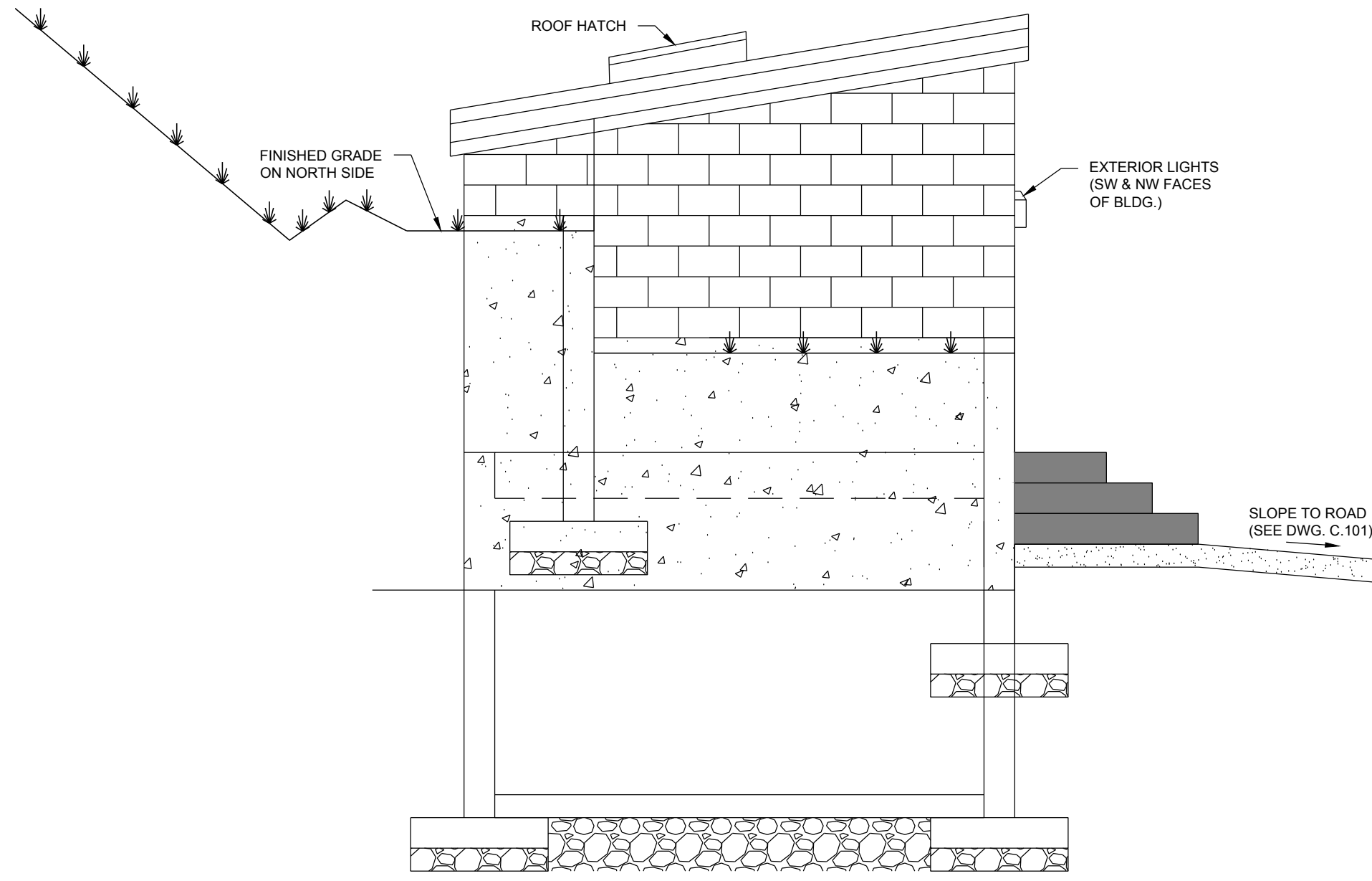
DESIGNED/DRAWN BY:
JMBP

CHECKED: APPROVED:

1" SCALE MEASURES 1" ON FULL SIZE SHEET
ADJUST FOR HALF SIZE SHEETS

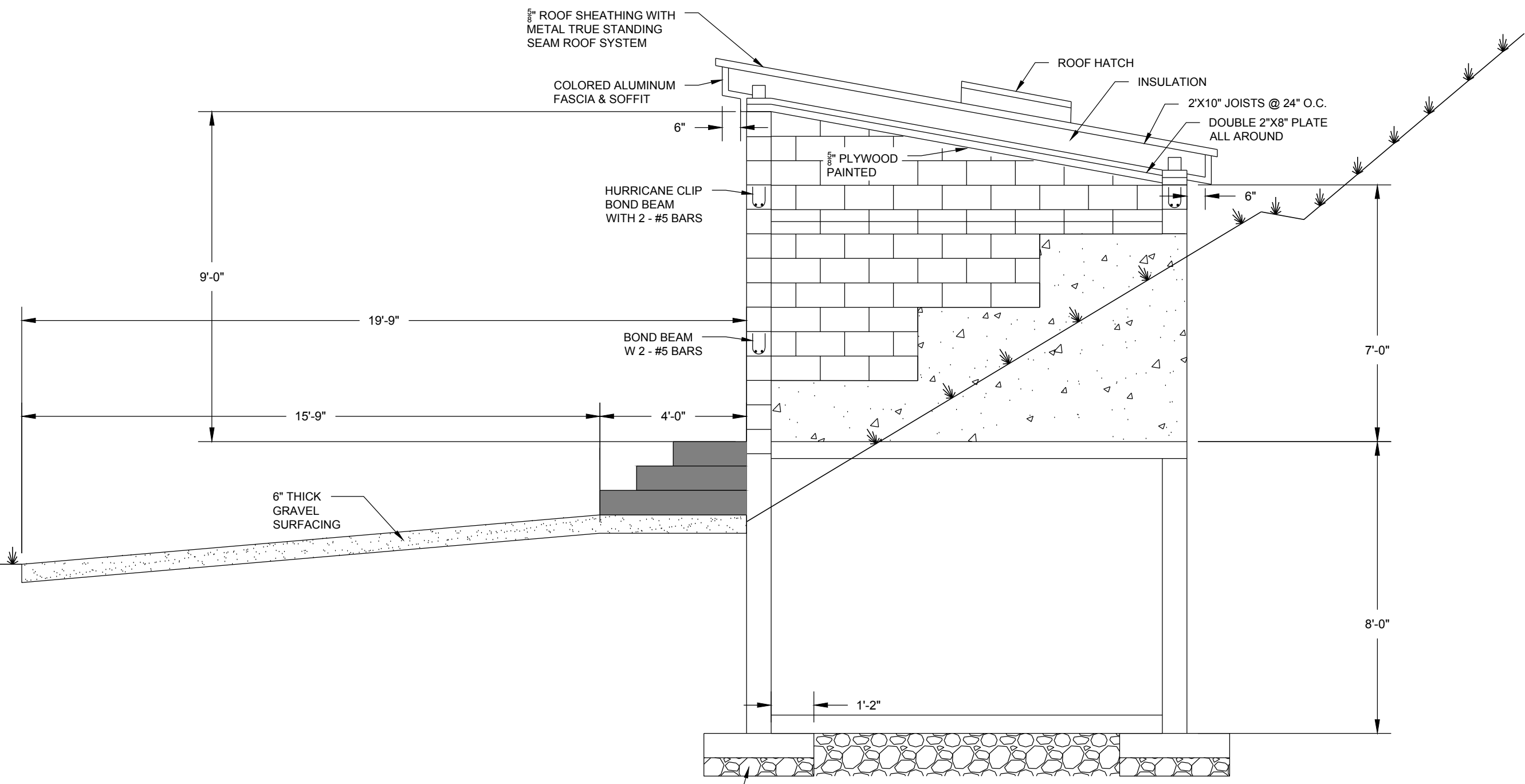


GILSON ENGINEERING
Civil & Structural Engineers
1640 SOUTH 400 WEST, SUITE 200, P.O. BOX 6
PROVO, UT 84601
PHONE: (801) 871-2414 FAX: (801) 871-2448



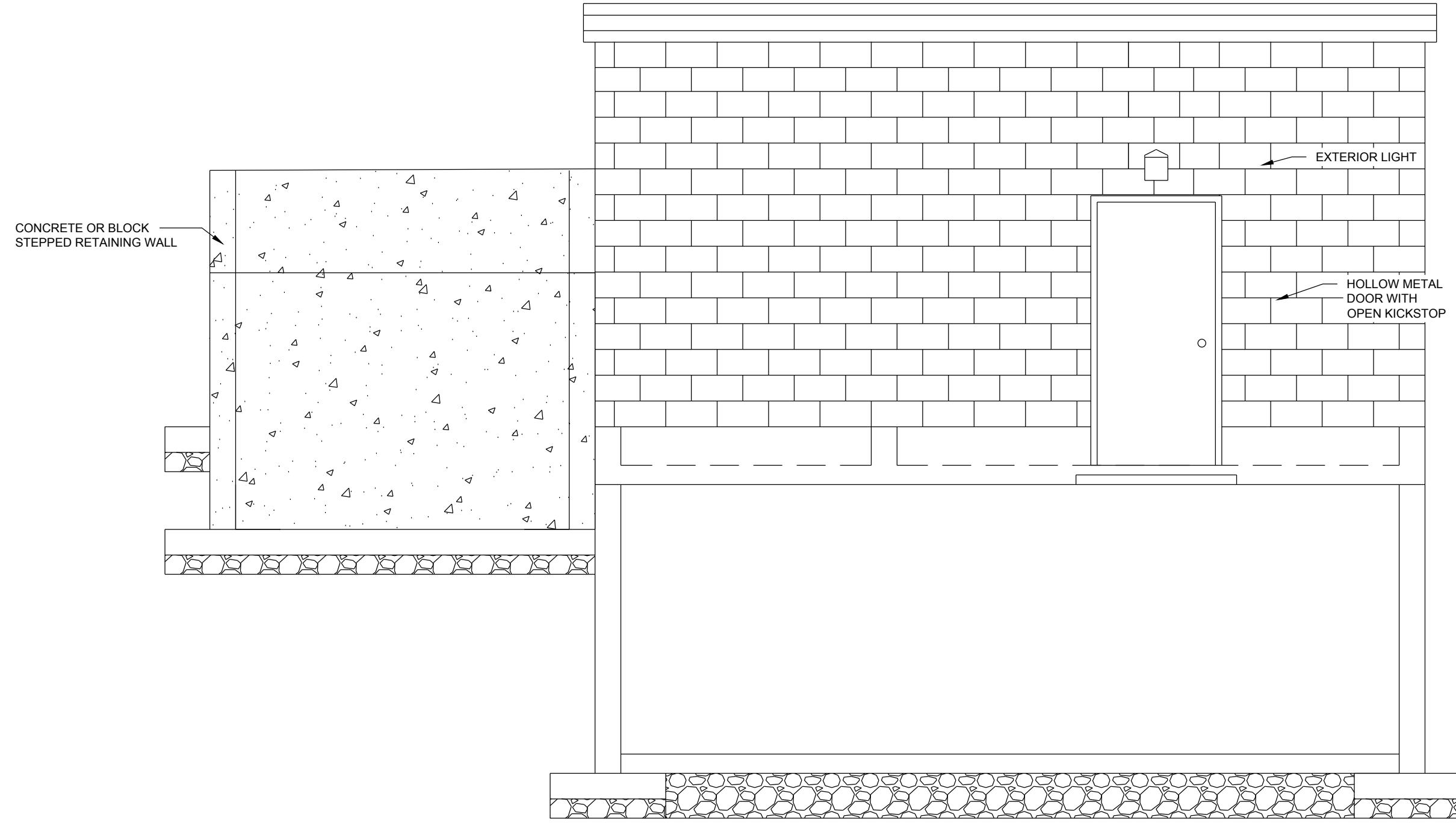
**PUMPHOUSE WELL #1
NORTH ELEVATION**
SCALE: 1" = 3'

5
S.101



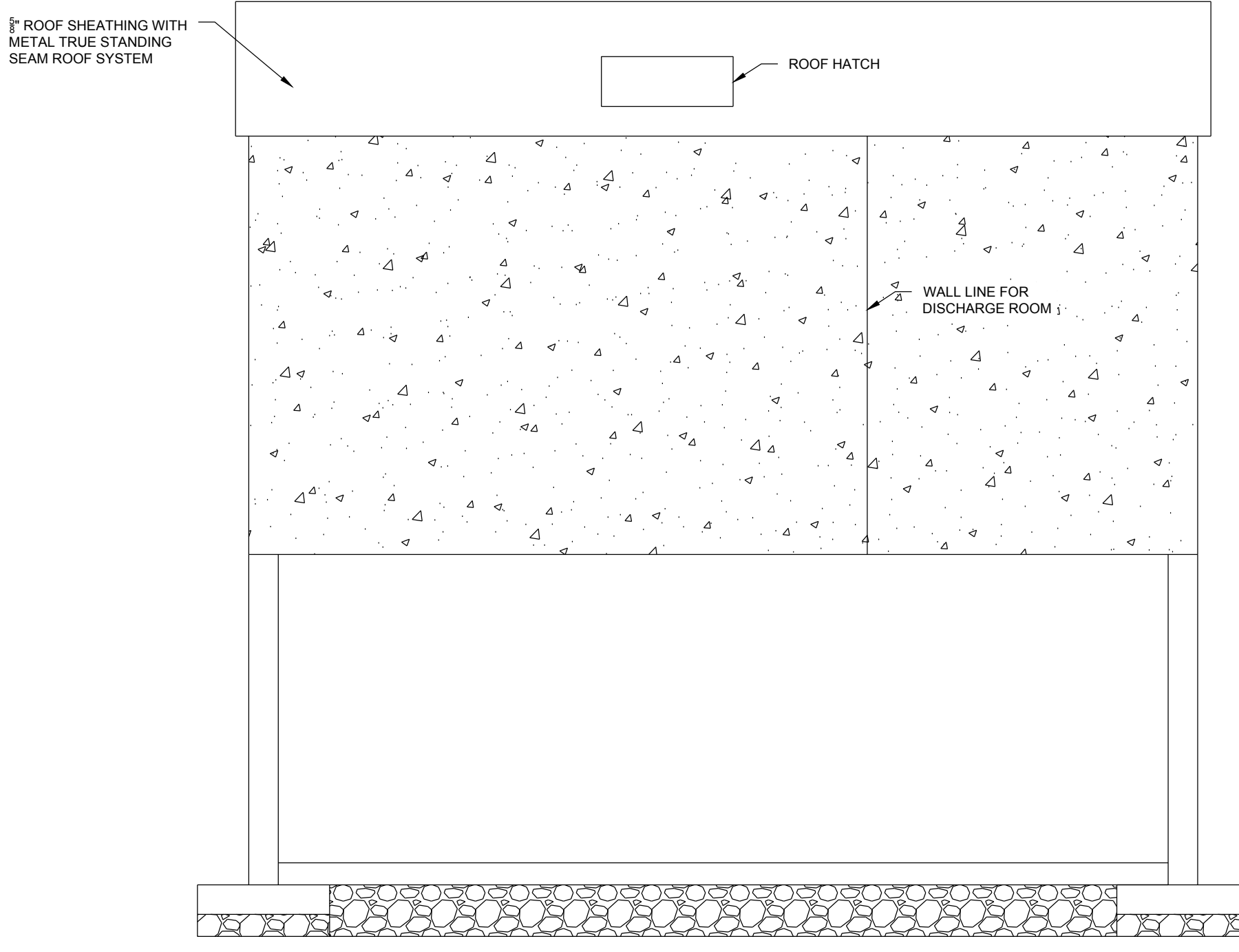
**PUMPHOUSE WELL #1
SOUTH ELEVATION**
SCALE: 1" = 3'

2
S.101



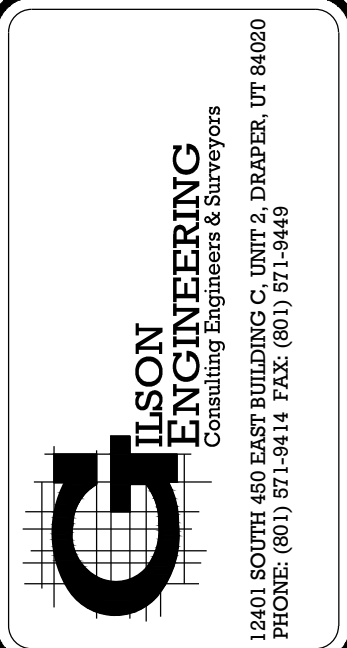
**PUMPHOUSE WELL #1
WEST ELEVATION**
SCALE: 1" = 3'

4
S.103



**PUMPHOUSE WELL #1
WEST ELEVATION**
SCALE: 1" = 3'

4
S.103



REVISIONS	REVISIONS	REVISIONS
REV	DATE	BY/COMMENTS

DATE: AUGUST 2020
 DRAWING NAME: S.102
 ELEVATION VIEWS
 DESIGNED/DRAWN BY: JMB/BP
 CHECKED: APPROVED: _____

BOOSTER STATION STRUCTURAL PLANS
 PIZZEL SPRING #3 & PUMP HOUSE #1 REHABILITATION PROJECT
 POWDER MOUNTAIN WATER & SEWER IMPROVEMENT DISTRICT
 WEBER COUNTY, UTAH

PROJ. # **POW.010**

S.102