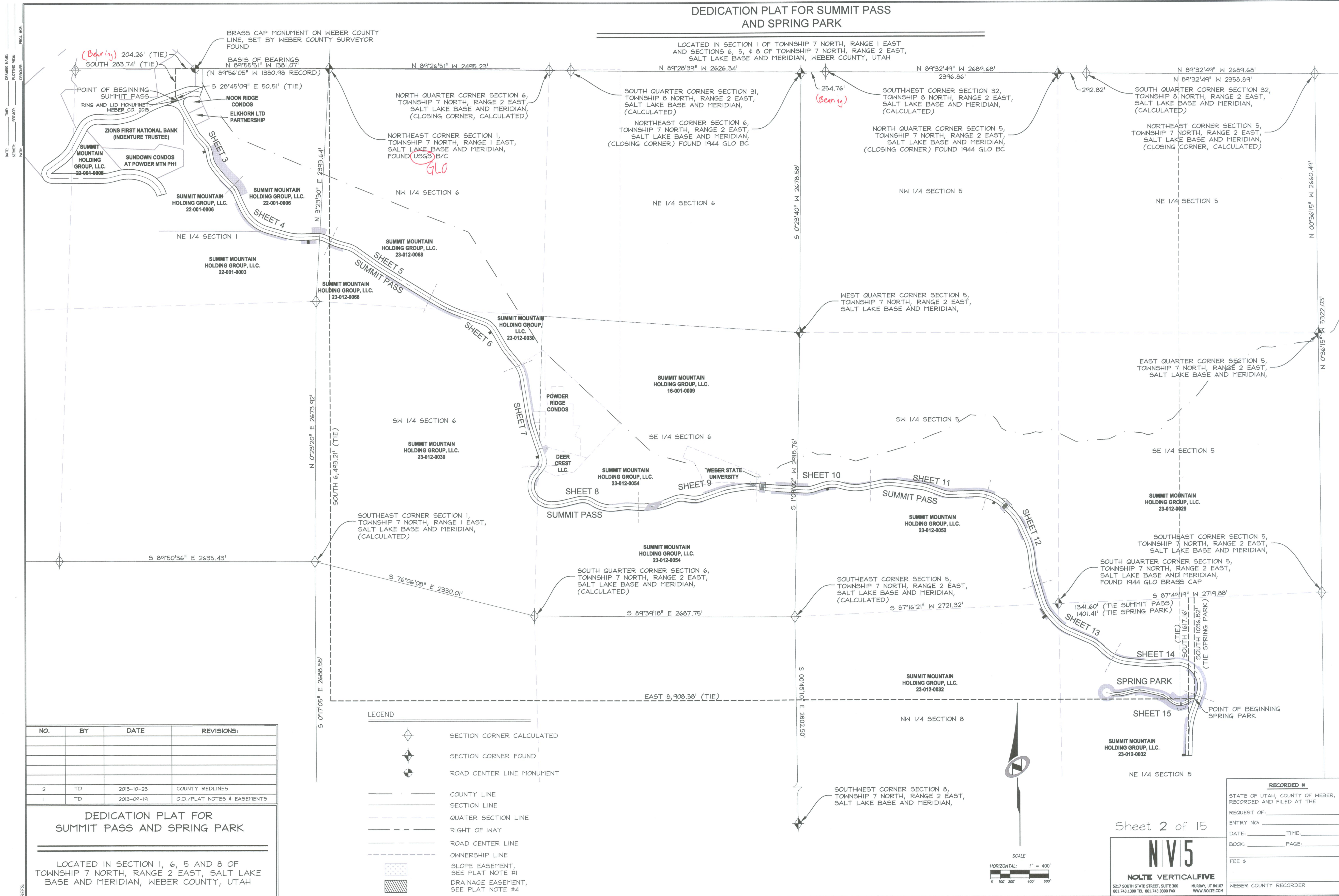


DEDICATION PLAT FOR SUMMIT PASS
AND SPRING PARK

LOCATED IN SECTION 1 OF TOWNSHIP 7 NORTH, RANGE 1 EAST
AND SECTIONS 6, 5, & 8 OF TOWNSHIP 7 NORTH, RANGE 2 EAST,
SALT LAKE BASE AND MERIDIAN, WEBER COUNTY, UTAH

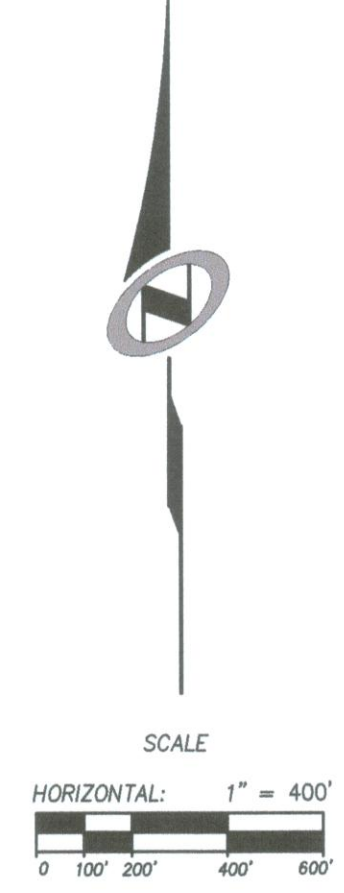


NO.	BY	DATE	REVISIONS:
2	TD	2013-10-23	COUNTY REDLINES
1	TD	2013-09-19	O.D./PLAT NOTES & EASEMENTS

DEDICATION PLAT FOR
SUMMIT PASS AND SPRING PARK

LOCATED IN SECTION 1, 6, 5 AND 8 OF
TOWNSHIP 7 NORTH, RANGE 2 EAST, SALT LAKE
BASE AND MERIDIAN, WEBER COUNTY, UTAH

- LEGEND
- SECTION CORNER CALCULATED
 - SECTION CORNER FOUND
 - ROAD CENTER LINE MONUMENT
 - COUNTY LINE
 - SECTION LINE
 - QUATER SECTION LINE
 - RIGHT OF WAY
 - ROAD CENTER LINE
 - OWNERSHIP LINE
 - SLOPE EASEMENT, SEE PLAT NOTE #1
 - DRAINAGE EASEMENT, SEE PLAT NOTE #4



Sheet 2 of 15

N/V/5

NOLTE VERTICALFIVE

5317 SOUTH STATE STREET, SUITE 300 HURON, UT 84107
801.743.1300 TEL 801.743.0300 FAX
WWW.NOLTE.COM

RECORDED #
STATE OF UTAH, COUNTY OF WEBER,
RECORDED AND FILED AT THE
REQUEST OF:
ENTRY NO:
DATE: TIME:
BOOK: PAGE:
FEE \$

WEBER COUNTY RECORDER