

DRAWING NAME: _____
 PLOTTING NEW: _____
 DATE: _____
 SERVER: _____
 PLATE: _____
 DESIGNED: _____
 PROJ. MGR: _____

DEDICATION PLAT FOR SUMMIT PASS AND SPRING PARK

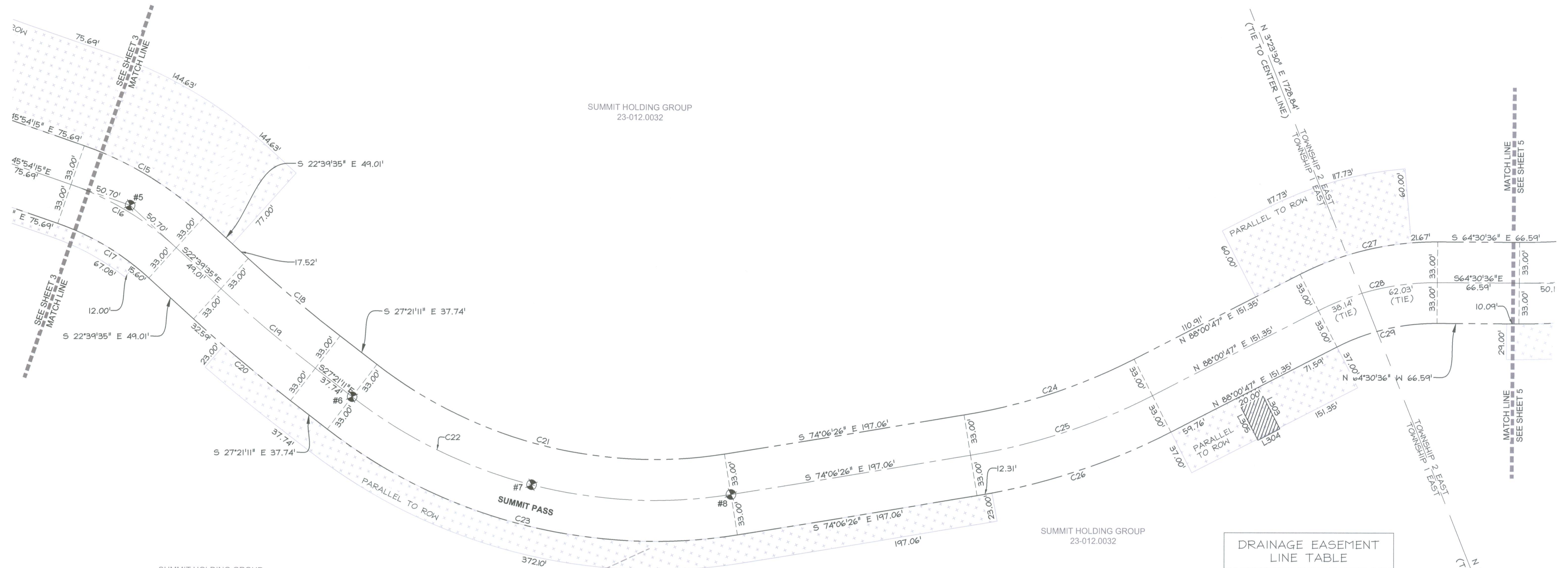
LOCATED IN SECTION 1 OF TOWNSHIP 7 NORTH, RANGE 1 EAST
AND SECTIONS 6, 5, & 8 OF TOWNSHIP 7 NORTH, RANGE 2 EAST,
SALT LAKE BASE AND MERIDIAN, WEBER COUNTY, UTAH

NORTHEAST CORNER SECTION 1
TOWNSHIP 7 NORTH, RANGE 1 EAST
SALT LAKE BASE AND MERIDIAN
FOUND GLO B/C

SUMMIT HOLDING GROUP
23-012.0032

SUMMIT HOLDING GROUP
23-012.0032

SUMMIT HOLDING GROUP
23-012.0032



| WEBER COUNTY STREET MONUMENT TABLE | | |
|---------------------------------------|------------|------------|
| # | NORTHING | EASTING |
| 5 | 3661155.00 | 1563498.63 |
| 6 | 3660938.97 | 1563596.60 |
| 7 | 3660813.14 | 1563698.64 |
| 8 | 3660738.14 | 1563842.23 |

NOTE: COORDINATES IN TABLE ARE UTAH STATE PLANE NORTH AS DERIVED BY WEBER COUNTY SURVEY AND HAVE NOT BEEN ROTATED TO MATCH THE BASIS OF BEARING OF THIS PLAT

| CURVE TABLE | | | | | | |
|-------------|--------|---------|-----------|---------------|--------------|--|
| CURVE # | LENGTH | RADIUS | DELTA | CHORD BEARING | CHORD LENGTH | |
| C15 | 113.39 | 279.49 | 23°14'40" | N 34°16'55" W | 112.61' | |
| C16 | 100.00 | 246.49 | 23°14'40" | N 34°16'55" W | 99.32' | |
| C17 | 86.61 | 213.49 | 23°14'40" | N 34°16'55" W | 86.02' | |
| C18 | 97.30 | 1187.77 | 4°41'36" | S 25°00'23" E | 97.27' | |
| C19 | 100.00 | 1220.77 | 4°41'36" | S 25°00'23" E | 99.97' | |
| C20 | 102.70 | 1253.77 | 4°41'36" | S 25°00'23" E | 102.67' | |
| C21 | 299.48 | 367.00 | 46°45'15" | S 50°43'49" E | 291.24' | |
| C22 | 326.41 | 400.00 | 46°45'15" | S 50°43'49" E | 317.42' | |
| C23 | 353.33 | 433.00 | 46°45'15" | S 50°43'49" E | 343.61' | |
| C24 | 145.73 | 467.00 | 17°52'47" | S 83°02'49" E | 145.14' | |
| C25 | 156.03 | 500.00 | 17°52'47" | S 83°02'49" E | 155.40' | |
| C26 | 166.33 | 533.00 | 17°52'47" | S 83°02'49" E | 165.65' | |
| C27 | 116.00 | 241.89 | 27°28'37" | N 78°14'54" W | 114.89' | |
| C28 | 100.17 | 208.89 | 27°28'37" | N 78°14'54" W | 99.22' | |
| C29 | 84.35 | 175.89 | 27°28'37" | N 78°14'54" W | 83.54' | |

| DRAINAGE EASEMENT LINE TABLE | | | |
|---------------------------------|--------|---------------|--|
| LINE # | LENGTH | DIRECTION | |
| L303 | 37.82 | S 02°19'10" E | |
| L304 | 20.00 | N 87°40'50" E | |
| L305 | 37.93 | S 02°19'10" E | |

NOTE:
ALL SLOPE EASEMENTS ARE PARALLEL TO R.O.W.

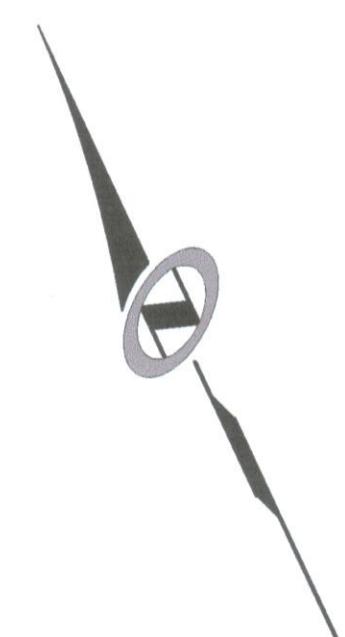
| NO. | BY | DATE | REVISIONS: |
|-----|----|------------|-----------------------------|
| | | | |
| 2 | TD | 2013-10-23 | COUNTY REDLINES |
| 1 | TD | 2013-09-19 | O.D./PLAT NOTES & EASEMENTS |

DEDICATION PLAT FOR SUMMIT PASS AND SPRING PARK

LOCATED IN SECTION 1 & 6 OF
TOWNSHIP 7 NORTH, RANGE 2 EAST, SALT LAKE
BASE AND MERIDIAN, WEBER COUNTY, UTAH

- LEGEND**
- SECTION CORNER CALCULATED
 - SECTION CORNER FOUND
 - ROAD CENTER LINE MONUMENT
 - COUNTY LINE
 - SECTION LINE
 - QUARTER SECTION LINE
 - RIGHT OF WAY
 - ROAD CENTER LINE
 - OWNERSHIP LINE
 - SLOPE EASEMENT,
SEE PLAT NOTE #1
 - DRAINAGE EASEMENT,
SEE PLAT NOTE #4

EAST QUARTER CORNER SECTION 1
TOWNSHIP 7 NORTH, RANGE 1 EAST
SALT LAKE BASE AND MERIDIAN
(CALCULATED)



SCALE
HORIZONTAL: 1" = 40'
0 10' 20' 40' 80'

Sheet 4 of 15

NV5

NOLTE VERTICALFIVE

5217 SOUTH STATE STREET, SUITE 300 MURRAY, UT 84107
801.743.1300 TEL. 801.743.0300 FAX WWW.NOLTE.COM

RECORDED #

STATE OF UTAH, COUNTY OF WEBER,
RECORDED AND FILED AT THE

REQUEST OF: _____

ENTRY NO: _____

DATE: _____ TIME: _____

BOOK: _____ PAGE: _____

FEE \$ _____

WEBER COUNTY RECORDER