

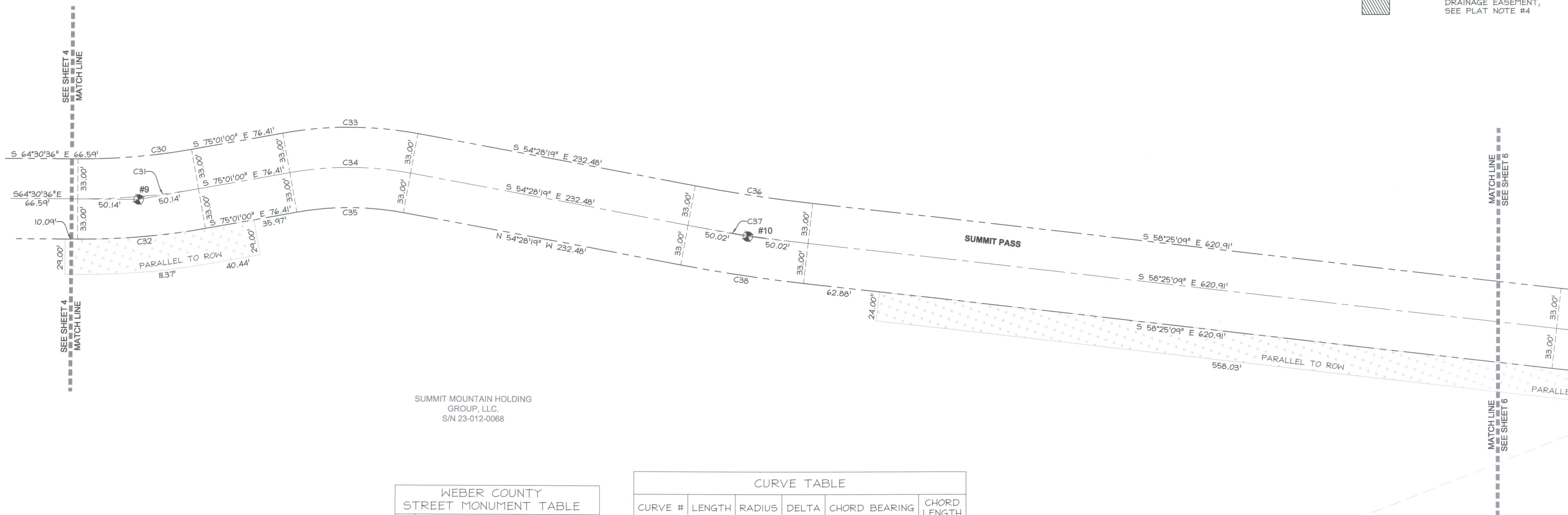
DEDICATION PLAT FOR SUMMIT PASS AND SPRING PARK

LOCATED IN SECTION 1 OF TOWNSHIP 7 NORTH, RANGE 1 EAST
AND SECTIONS 6, 5, & 8 OF TOWNSHIP 7 NORTH, RANGE 2 EAST,
SALT LAKE BASE AND MERIDIAN, WEBER COUNTY, UTAH

SUMMIT MOUNTAIN HOLDING
GROUP, LLC.
S/N 23-012-0068

LEGEND

	SECTION CORNER CALCULATED
	SECTION CORNER FOUND
	ROAD CENTER LINE MONUMENT
	COUNTY LINE
	SECTION LINE
	QUATER SECTION LINE
	RIGHT OF WAY
	ROAD CENTER LINE
	OWNERSHIP LINE
	SLOPE EASEMENT, SEE PLAT NOTE #1
	DRAINAGE EASEMENT, SEE PLAT NOTE #4



SUMMIT MOUNTAIN HOLDING
GROUP, LLC.
S/N 23-012-0068

NOTE:
ALL SLOPE EASEMENTS ARE PARALLEL TO R.O.W.

NO.	BY	DATE	REVISIONS:
2	TD	2013-10-23	COUNTY REDLINES
1	TD	2013-09-19	O.D./PLAT NOTES & EASEMENTS

DEDICATION PLAT FOR SUMMIT PASS AND SPRING PARK

LOCATED IN SECTION 6 OF
TOWNSHIP 7 NORTH, RANGE 2 EAST, SALT LAKE
BASE AND MERIDIAN, WEBER COUNTY, UTAH

WEBER COUNTY STREET MONUMENT TABLE		
#	NORTHING	EASTING
9	3660600.23	1564539.47
10	3660361.02	1564981.38

NOTE: COORDINATES IN TABLE ARE UTAH
STATE PLANE NORTH AS DERIVED BY
WEBER COUNTY SURVEY AND HAVE NOT
BEEN ROTATED TO MATCH THE BASIS **PROF**
BEARING OF THIS PLAT

CURVE TABLE					
CURVE #	LENGTH	RADIUS	DELTA	CHORD BEARING	CHORD LENGTH
C30	93.95	512.32	10°30'24"	S 69°45'48" E	93.82'
C31	100.00	545.32	10°30'24"	S 69°45'48" E	99.86'
C32	106.05	578.32	10°30'24"	S 69°45'48" E	105.90'
C33	111.83	311.88	20°32'41"	N 64°44'39" W	111.23'
C34	100.00	278.88	20°32'41"	N 64°44'39" W	99.47'
C35	88.17	245.88	20°32'41"	N 64°44'39" W	87.70'
C36	97.73	1418.47	3°56'51"	S 56°26'44" E	97.71'
C37	100.00	1451.47	3°56'51"	S 56°26'44" E	99.98'
C38	102.27	1484.47	3°56'51"	S 56°26'44" E	102.25'

SUMMIT MOUNTAIN HOLDING
GROUP, LLC.
S/N 23-012-030

Sheet 5 of 15

NV5
NOLTE VERTICALFIVE
5217 SOUTH STATE STREET, SUITE 300
801-743-1300 TEL. 801-743-0300 FAX
MURRAY, UT 84107
WWW.NOLTE.COM

RECORDED #	
STATE OF UTAH, COUNTY OF WEBER, RECORDED AND FILED AT THE	
REQUEST OF: _____	
ENTRY NO: _____	
DATE: _____ TIME: _____	
BOOK: _____ PAGE: _____	
FEE \$ _____	
WEBER COUNTY RECORDER	