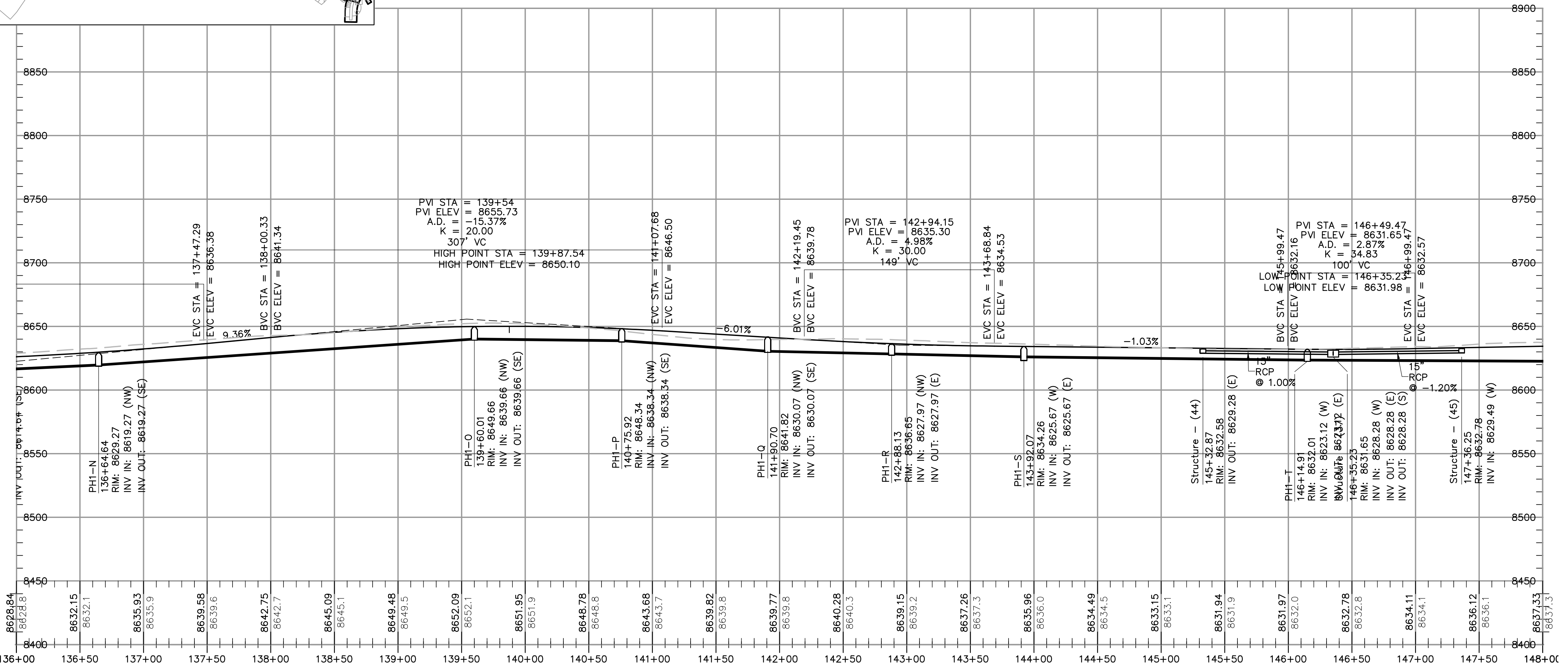
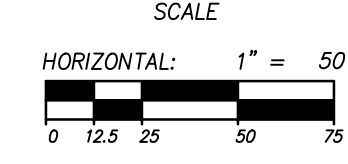


**POWDER RIDGE ROAD (RD01)**  
 STA: 136+00.00 TO 148+00.00



**PRELIMINARY**  
**NOT FOR CONSTRUCTION**

**SUMMIT AT POWDER MTN PH1**  
**POWDER RIDGE ROAD**  
**PLAN AND PROFILE**

MURRAY, UT 8407  
 WWW.NV5.COM

**NV5**  
 BEYOND ENGINEERING

627 SOUTH STATE STREET, SUITE 300  
 8017431800 TEL. 8017430800 FAX

SHEET NUMBER  
**2.9**  
 OF 43 SHEETS  
 SCALE  
 VERTICAL: 1" = 50'  
 HORIZONTAL: 1" = 50'

JOB NUMBER  
**SLB079306**

DATE SUBMITTED: 12/21/2012

PREPARED FOR: SUMMIT, LLC

CAUTION  
 The engineer preparing these plans will not be responsible for, or liable for, unauthorized changes to or uses of these plans. The engineer's liability is limited to the design and construction of these plans.