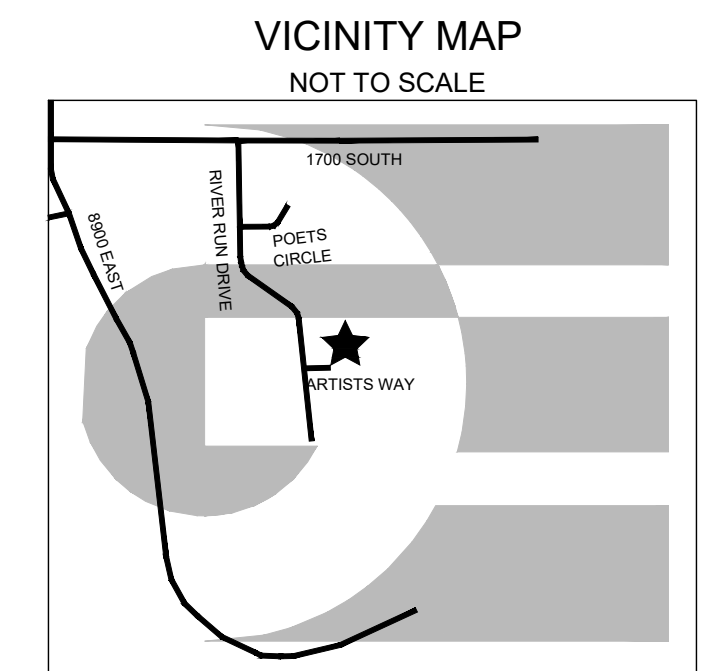
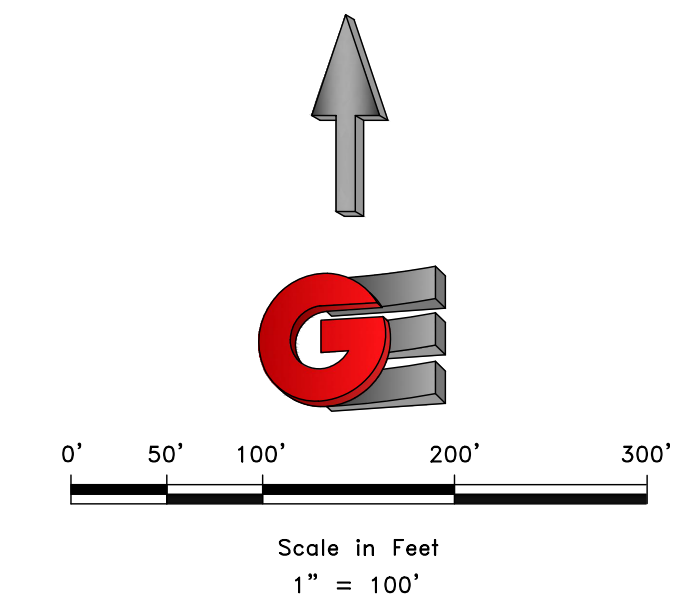
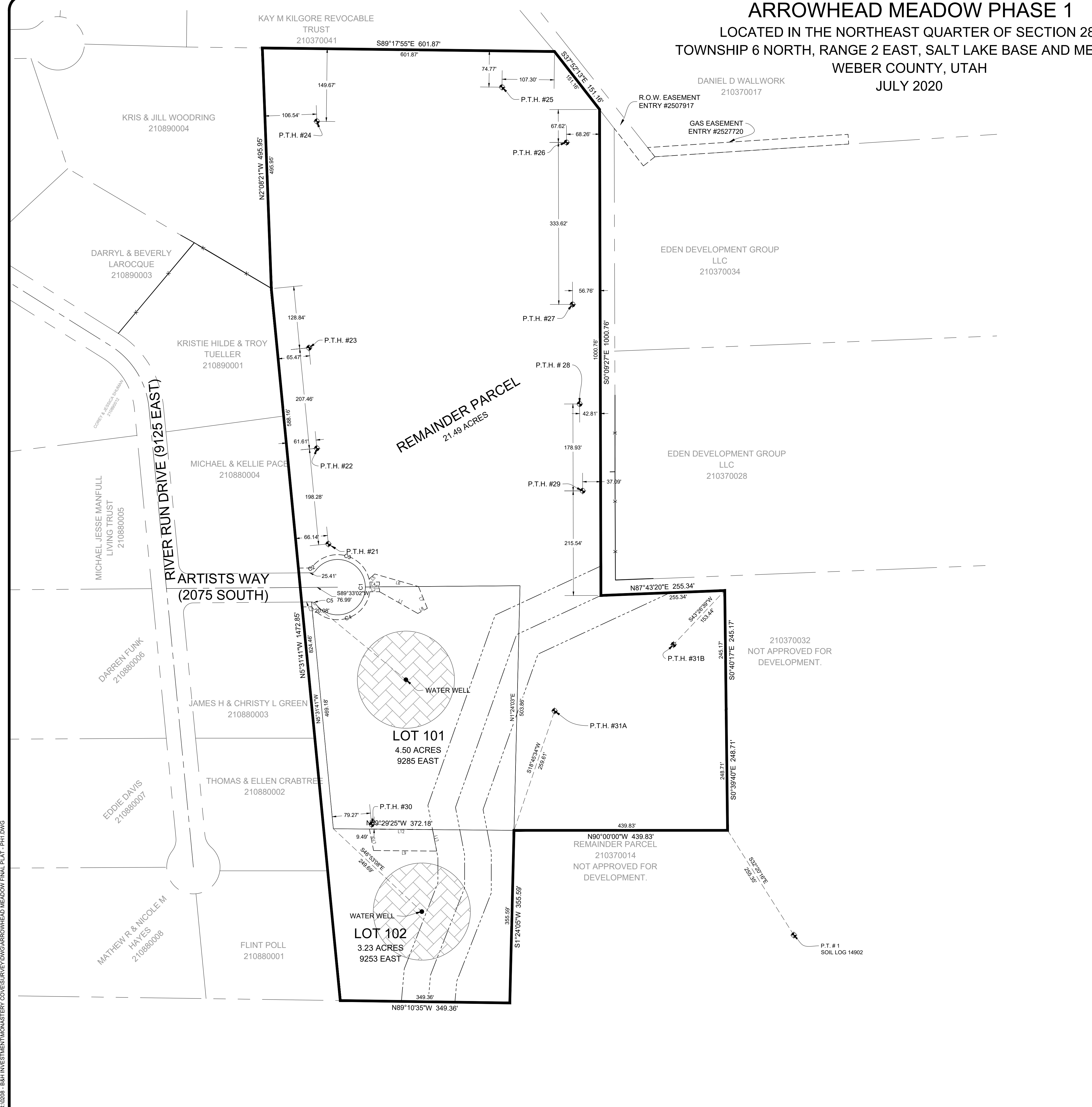


ARROWHEAD MEADOW PHASE 1

LOCATED IN THE NORTHEAST QUARTER OF SECTION 28,
TOWNSHIP 6 NORTH, RANGE 2 EAST, SALT LAKE BASE AND MERIDIAN,
WEBER COUNTY, UTAH
JULY 2020



LEGEND

	WEBER COUNTY MONUMENT AS NOTED		EXISTING WATER LINE
	SET 24" REBAR AND CAP MARKED GARDNER ENGINEERING		EXISTING IRRIGATION LINE
	SUBDIVISION BOUNDARY		EXISTING STORM DRAIN
	LOT LINE		EXISTING SANITARY SEWER
	ADJACENT PARCEL		EXISTING OVERHEAD POWER
	SECTION LINE		EXISTING GAS LINE
	EASEMENT		EXISTING WATER METER
	EXISTING FENCE LINE		EXISTING WATER MANHOLE
	20' UTILITY AND ACCESS EASEMENT		EXISTING FIRE HYDRANT
	100' WELL PROTECTION ZONE		EXISTING WATER VALVE
	STORM DRAIN EASEMENT		EXISTING STORM MANHOLE
			EXISTING CATCH BASIN
			EXISTING SEWER MANHOLE
			SOIL TEST PIT

PERC TEST HOLE #	DEPTH INCHES	FINAL STABILIZED PERC RATE	TEST STATUS	RECOMMENDED WASTEWATER DISPOSAL SYSTEM	STATIFIED SOILS EVALUATION #1864 BY WEBER-MORGAN HEALTH DEPT
PT 21-L	60"	2.5 MIN/IN	FAIL	AT-GRADE	0'-16" LOAM, GRAY, DRY, GRAVELLY & COBBLY
PT 21-M	48"	5.0 MIN/IN	PASS		16'-64" SANDY LOAM, REDDISH BROWN, DRY, VERY GRAVELLY, COBBLY & STONEY
PT 21-H	36"	4.2 MIN/IN	FAIL		
PT 22-L	60"	5.6 MIN/IN	PASS	CONVENTIONAL	0'-17" LOAM, GRAY, DRY, GRAVELLY, COBBLY & STONEY
PT 22-M	48"	6.2 MIN/IN	PASS		17'-65" SANDY SKELETAL, DARK REDDISH BROWN, DRY
PT 22-H	36"	5.0 MIN/IN	PASS		
PT 23-L	60"	5.0 MIN/IN	PASS	CONVENTIONAL	0'-14" LOAM, GRAY, DRY, GRAVELLY & COBBLY
PT 23-M	48"	5.6 MIN/IN	PASS		14'-32" SANDY LOAM, LIGHT GRAY, VERY GRAVELLY & COBBLY
PT 23-H	36"	25.0 MIN/IN	PASS		32'-65" SANDY SKELETAL, PALE BROWN, DRY
PT 24-L	60"	4.5 MIN/IN	FAIL		0'-18" LOAM, GRAY, MOIST, GRAVELLY
PT 24-M	48"	2.9 MIN/IN	FAIL		18'-36" LOAM, GRAYISH BROWN, MOIST, GRAVELLY
PT 24-H	36"	25.0 MIN/IN	PASS	WISCONSIN MOUND	36'-45" HEAVY LOAM, BROWN, MOIST, GRAVELLY & STONEY
					45'-60" SANDY LOAM, BROWN, MOIST, VERY COBBLY & STONEY
PT 25-L	60"	8.3 MIN/IN	PASS	CONVENTIONAL	0'-26" LOAM, BLACK, MOIST, GRAVELLY, COBBLY
PT 25-M	48"	2.5 MIN/IN	PASS		26'-42" SANDY LOAM, PALE BROWN, DRY, VERY COBBLY, STONEY
PT 25-H	36"	7.1 MIN/IN	PASS		42'-60" LOAMY SAND, PALE BROWN, DRY, VERY COBBLY, STONEY
PT 26-L	60"	5.0 MIN/IN	PASS	CONVENTIONAL	0'-6" LOAM, GRAY, DRY, GRAVELLY, COBBLY, STONEY
PT 26-M	48"	12.5 MIN/IN	PASS		6'-38" SANDY LOAM, PALE BROWN, DRY, VERY COBBLY, STONEY
PT 26-H	36"	4.5 MIN/IN	FAIL		38'-60" LOAMY SAND, REDDISH BROWN, MOIST, VERY COBBLY, STONEY
PT 27-L	60"	8.3 MIN/IN	PASS	CONVENTIONAL	0'-8" LOAM, GRAY, DRY, COBBLY & STONEY
PT 27-M	48"	7.1 MIN/IN	PASS		8'-36" SANDY LOAM, GRAY, DRY, VERY COBBLY & STONEY
PT 27-H	36"	5.6 MIN/IN	PASS		36'-57" SANDY SKELETAL, REDDISH BROWN, MOIST, COBBLY & STONEY
PT 28-L	60"	4.2 MIN/IN	FAIL	AT-GRADE	0'-10" LOAM, GRAY, DRY, COBBLY & STONEY
PT 28-M	48"	5.0 MIN/IN	PASS		10'-27" SANDY LOAM, PALE BROWN, DRY, VERY COBBLY & STONEY
PT 28-H	36"	5.6 MIN/IN	PASS		27'-55" SANDY SKELETAL, REDDISH BROWN, MOIST
PT 29-L	60"	8.3 MIN/IN	PASS	CONVENTIONAL	0'-14" LOAM, GRAY, DRY, GRAVELLY
PT 29-M	48"	5.0 MIN/IN	PASS		14'-28" LOAM, GRAYISH BROWN, GRAVELLY, DRY
PT 29-H	36"	8.3 MIN/IN	PASS		28'-58" SANDY LOAM, REDDISH BROWN, DRY, COBBLY & STONEY
PT 30-L	60"	8.3 MIN/IN	PASS	CONVENTIONAL	0'-17" LOAM, GRAY, DRY, VERY GRAVELLY
PT 30-M	48"	5.0 MIN/IN	PASS		17'-48" LOAMY SAND, REDDISH BROWN, DRY
PT 30-H	36"	10.0 MIN/IN	PASS		
PT 31A-L	60"	1.2 MIN/IN	FAIL		0'-16" LOAM, BLACK, MOIST, GRAVELLY
PT 31A-M	48"	5.0 MIN/IN	PASS		16'-36" LOAM, BROWN, MOIST, GRAVELLY & STONEY
PT 31A-H	36"	16.7 MIN/IN	PASS		36'-60" SANDY SKELETAL, REDDISH BROWN, MOIST
PT 31B-L	60"	8.3 MIN/IN	PASS	CONVENTIONAL	0'-27" SILT LOAM, BLACK, MOIST, GRAVELLY
PT 31B-M	48"	6.2 MIN/IN	PASS		27'-41" LOAM, GRAYISH BROWN, MOIST, GRAVELLY
PT 31B-H	36"	5.5 MIN/IN	PASS		41'-52" LOAM, BROWN, MOIST
					52'-68" SANDY LOAM, BROWN, MOIST

SOIL LOG #14902
LOCATION - UTM ZONE 12 NAD 83 439440E 4564344N.
CULINARY WATER WELL MUST BE A MINIMUM OF 100 FEET FROM WASTE WATER FACILITIES.

DEVELOPER: B & H INVESTMENT CURTIS HYDE 110 WEST JENNINGS LANE CENTERTVILLE, UTAH, 84014 801-540-8505	S2 <hr/> 2	COUNTY RECORDER ENTRY NO. _____ FEE PAID _____ FILED FOR AND RECORDED _____ AT _____ IN BOOK _____ OF OFFICIAL _____ RECORDS, PAGE _____ RECORDED _____ FOR _____ COUNTY RECORDER _____ BY: _____
 CIVIL • LAND PLANNING MUNICIPAL • LAND SURVEYING 5150 SOUTH 375 EAST OGDEN, UT OFFICE: 801.476.0202 FAX: 801.476.0066		

P:\0208 - B&H Investment\0208 ARROWHEAD MEADOW\FINAL PLAT - PH.DWG
 P:\0208 - B&H Investment\0208 ARROWHEAD MEADOW\Final Plat.dwg 2/20/2020 11:13:24 AM, L1