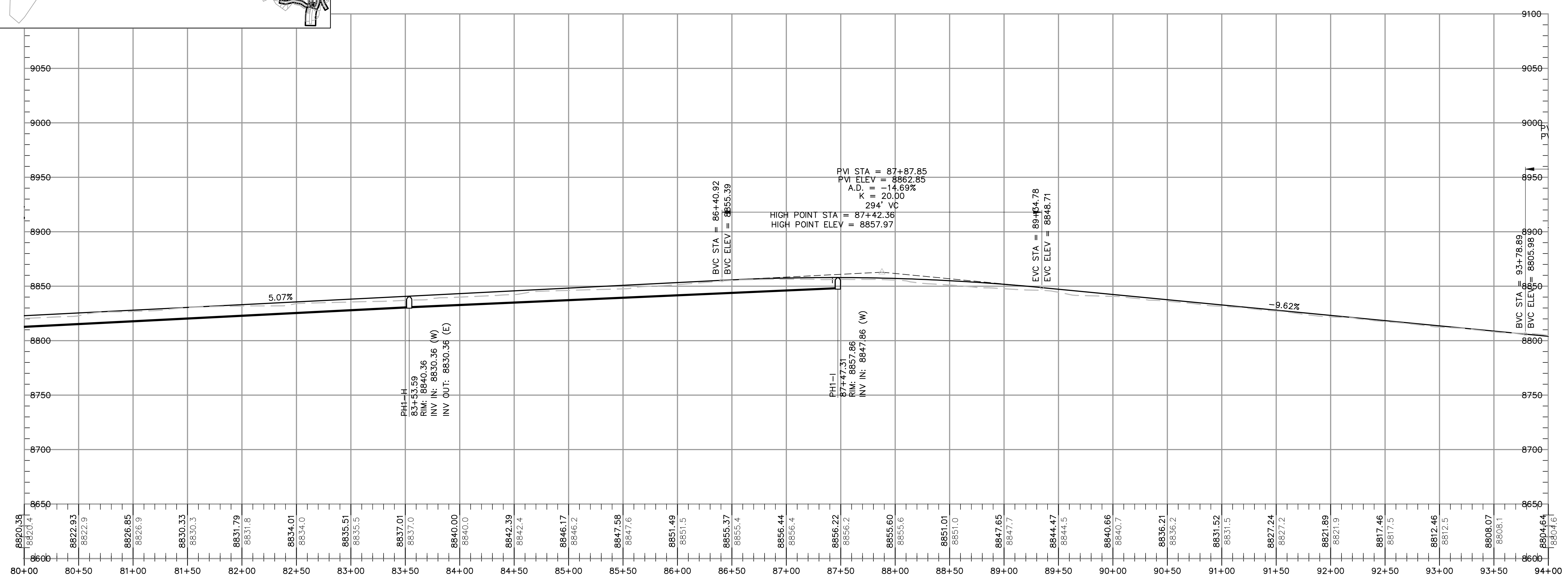


POWDER RIDGE ROAD (RD01)
 STA: 80+00.00 TO 94+00.00



PRELIMINARY
NOT FOR CONSTRUCTION

NO.	BY	DATE	REVISIONS

SUMMIT AT POWDER MTN PH1
POWDER RIDGE ROAD
PLAN AND PROFILE

DATE SUBMITTED: 12/21/2012

PREPARED FOR: SUMMIT, LLC

NV5
 BEYOND ENGINEERING

5217 SOUTH STATE STREET, SUITE 300
 801743.8000 TEL. 801743.0800 FAX

MURRAY, UT 84107
 WWW.NV5.COM

SHEET NUMBER
2.5
 OF 43 SHEETS

SCALE
 VERTICAL: 1" = 50'
 HORIZONTAL: 1" = 50'

JOB NUMBER
SLB079306

The engineer preparing these plans will not be responsible for, or liable for, unauthorized changes to or uses of these plans, and must be approved by the preparer of these plans.

CALTON