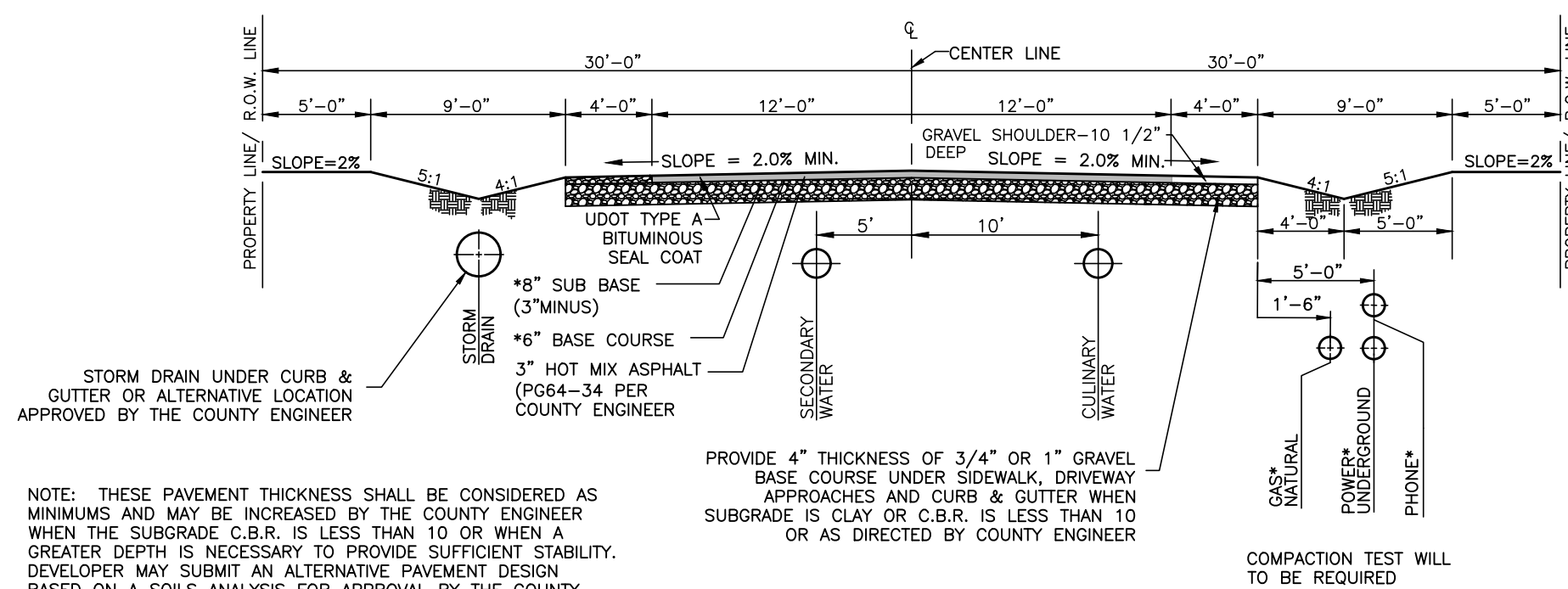


VICINITY MAP
NOT TO SCALE



STORM DRAIN UNDER CURB & GUTTER OR ALTERNATIVE LOCATION APPROVED BY THE COUNTY ENGINEER

NOTE: THESE PAVEMENT THICKNESS SHALL BE CONSIDERED AS MINIMUMS AND MAY BE INCREASED BY THE COUNTY ENGINEER WHEN THE SUBGRADE C.B.R. IS LESS THAN 10 OR WHEN A GREATER DEPTH IS NECESSARY TO PROVIDE SUFFICIENT STABILITY. DEVELOPER MAY SUBMIT AN ALTERNATIVE PAVEMENT DESIGN BASED ON A SOILS ANALYSIS FOR APPROVAL BY THE COUNTY ENGINEER. COMPACTION TESTS ON BOTH SUB-BASE AND BASE COURSES WILL BE REQUIRED.

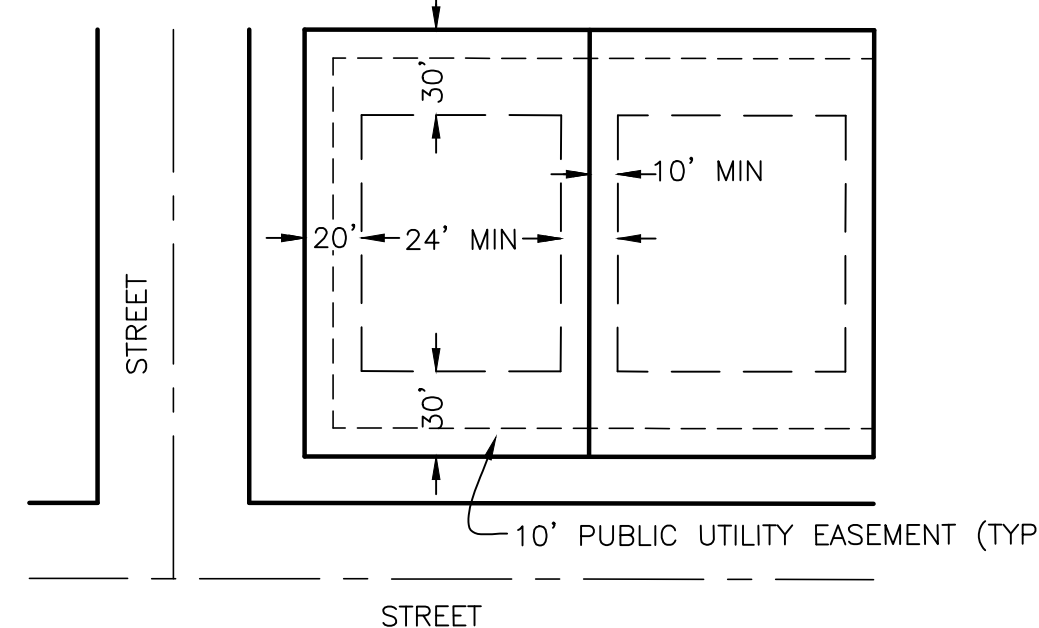
PROVIDE 4" THICKNESS OF 3/4" OR 1" GRAVEL BASE COURSE UNDER SIDEWALK, DRIVEWAY APPROACHES AND CURB & GUTTER WHEN SUBGRADE IS CLAY OR C.B.R. IS LESS THAN 10 OR AS DIRECTED BY COUNTY ENGINEER

COMPACTION TEST WILL TO BE REQUIRED

STREET SECTION (60' R.O.W.)

SCALE: NONE
*VERIFY LOCATION WITH PHONE, GAS AND POWER COMPANIES.

NOTE: ALL EXCAVATIONS, COMPACTIONS AND SECTIONS SHALL FOLLOW THE RECOMMENDATION OF THE GEOTECHNICAL STUDY



TYPICAL LOT UTILITY & SETBACK EASEMENT

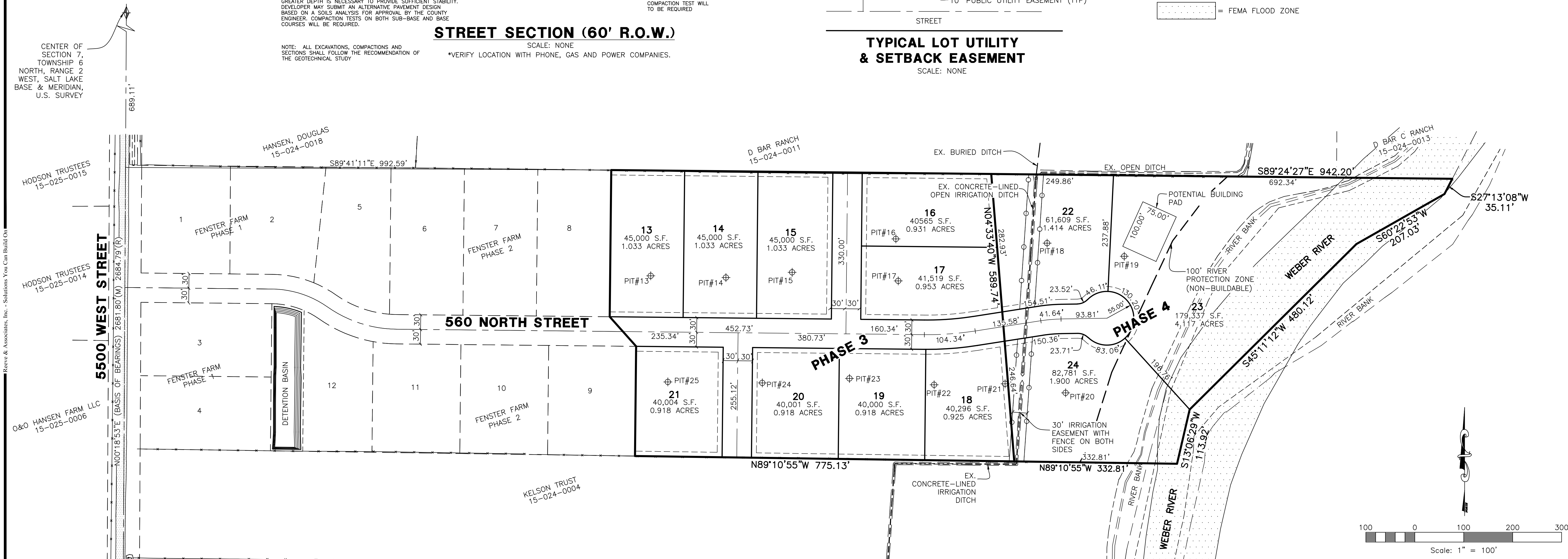
SCALE: NONE

LEGEND

- = SECTION CORNER
- = BOUNDARY LINE
- = LOT LINE
- = ADJOINING PROPERTY
- = 10' PUBLIC UTILITY EASEMENT
- = SECTION TIE LINE
- = EXISTING FENCE LINE
- = PROPOSED FENCE LINE
- = PIT# = EXPLORATION TEST PIT
- = FEMA FLOOD ZONE

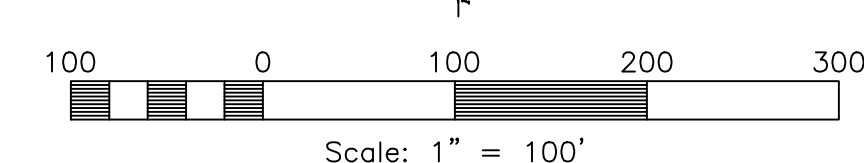
ELEVATION NOTES

1. ADD 3.18 TO PROJECT ELEVATIONS FOR COMPARISON TO FEMA FIRM PARCELS (LOCATED ON NAVD88)
2. ALL LOTS: FFE 4224.82 BFE 4222.82



EXPLORATION TEST PIT INFO.

- EXPLORATION PIT #13** (UTM ZONE 12 NAD 83 (12T) 0407102E 4569238N)
0-10' SANDY LOAM, GRANULAR STRUCTURE, 0.65 GPD/SQ FT
10-64' SANDY CLAY LOAM, BLOCKY STRUCTURE, 0.4 GPD/SQ FT (E)(H)= 240 MPI
64-100' SANDY CLAY LOAM, MASSIVE STRUCTURE, (E)(H)
- EXPLORATION PIT #14** (UTM ZONE 12 NAD 83 (12T) 0407149 E 4569236 N)
0-8' FINE SANDY LOAM, GRANULAR STRUCTURE, 0.5 GPD/SQ FT
8-24' FINE SANDY CLAY LOAM, BLOCKY STRUCTURE, 0.4 GPD/SQ FT (E)(H)= 60 MPI
24-48' FINE SANDY CLAY LOAM, MASSIVE STRUCTURE, (E)(H) = 60 MPI
48-86' LOAMY SAND, SINGLE GRAIN STRUCTURE, 0.9 (E)
GROUND WATER OBSERVED AT 86 INCHES.
- EXPLORATION PIT #15** (UTM ZONE 12 NAD 83 (12T) 0407190E 4569239N)
0-10' SANDY LOAM, GRANULAR STRUCTURE, 0.65 GPD/SQ FT
10-32' SANDY CLAY LOAM, BLOCKY STRUCTURE, 0.4 GPD/SQ FT (E)(H)= 48 MPI
32-96' SANDY CLAY LOAM, MASSIVE STRUCTURE, (E)(H)=106 MPI
GROUND WATER OBSERVED AT 96 INCHES.
- EXPLORATION PIT #16** (UTM ZONE 12 NAD 83 (12T) 0407255 E 4569259 N)
0-10' SANDY LOAM, GRANULAR STRUCTURE, 0.65 GPD/SQ FT
10-32' SANDY CLAY LOAM, BLOCKY STRUCTURE, 0.4 GPD/SQ FT (E)(H)= 120 MPI
32-120' SILTY CLAY LOAM, MASSIVE STRUCTURE, (E)(H)=64 MPI
GROUND WATER OBSERVED AT 120 INCHES.
- EXPLORATION PIT #17** (UTM ZONE 12 NAD 83 (12T) 0407256E 4569233N)
0-20' SANDY LOAM, GRANULAR STRUCTURE, 0.65 GPD/SQ FT
20-70' SANDY LOAM, WEAK MASSIVE STRUCTURE, 0.45 GPD/SQ FT
70-120' SANDY CLAY LOAM, MASSIVE STRUCTURE, (E)(H)
120-131' SANDY LOAM, WEAK MASSIVE STRUCTURE, 0.45 GPD/SQ FT
GROUND WATER OBSERVED AT 67 INCHES.
- EXPLORATION PIT #18** (UTM ZONE 12 NAD 83 (12T) 0407349E 4569255N)
0-10' FINE SANDY LOAM, GRANULAR STRUCTURE, 0.5 GPD/SQ FT
10-36' CLAY LOAM, BLOCKY STRUCTURE, 0.4 GPD/SQ FT (E)(H)= 80 MPI
36-112' SILTY CLAY LOAM, MASSIVE STRUCTURE, (E)(H) =96 MPI
- EXPLORATION PIT #19** (UTM ZONE 12 NAD 83 (12T) 0407397 E 4569253 N)
0-12' SANDY LOAM, GRANULAR STRUCTURE, 0.65 GPD/SQ FT
12-60' SANDY LOAM, WEAKLY MASSIVE STRUCTURE, 0.45 GPD/SQ FT (E)
60-96' LOAMY SAND, SINGLE GRAIN STRUCTURE, 0.9 GPD/SQ FT (E)
- EXPLORATION PIT #20** (UTM ZONE 12 NAD 83 (12T) 0407359 E 4569162 N)
0-10' SANDY LOAM, GRANULAR STRUCTURE, 0.65 GPD/SQ FT
10-72' SANDY LOAM, WEAKLY MASSIVE STRUCTURE, 0.45 GPD/SQ FT
72-110' LOAMY SAND, SINGLE GRAIN STRUCTURE, 0.9 GPD/SQ FT (E)
- EXPLORATION PIT #21** (UTM ZONE 12 NAD 83 (12T) 0407322E 4569168N)
0-16' SANDY LOAM, GRANULAR STRUCTURE, 0.65 GPD/SQ FT
16-60' CLAY LOAM, GRANULAR STRUCTURE, 0.4 GPD/SQ FT (E)(H)=120 MPI
60-70' LOAMY SAND, WEAK MASSIVE STRUCTURE, 0.45 GPD/SQ FT
70-128' SANDY CLAY LOAM, GRANULAR STRUCTURE, 0.4 GPD/SQ FT (E)(H)
GROUND WATER OBSERVED AT 67 INCHES.
- EXPLORATION PIT #22** (UTM ZONE 12 NAD 83 (12T) 0407274E 4569168N)
0-10' FINE SANDY LOAM, GRANULAR STRUCTURE, 0.5 GPD/SQ FT
10-50' SILTY CLAY LOAM, BLOCKY STRUCTURE, 0.4 GPD/SQ FT (E)(H)=120 MPI
50-122' SILTY CLAY LOAM, MASSIVE STRUCTURE, (E)(H)
- EXPLORATION PIT #23** (UTM ZONE 12 NAD 83 (12T) 0407225 E 4569173 N)
0-12' LOAM, GRANULAR STRUCTURE, 0.5 GPD/SQ FT
12-20' CLAY LOAM, BLOCKY STRUCTURE, 0.4 GPD/SQ FT (E)(H)=60 MPI
20-54' SANDY CLAY LOAM, BLOCKY STRUCTURE, 0.4 GPD/SQ FT (E)(H)=53 MPI
54-108' LOAMY SAND, SINGLE GRAIN STRUCTURE, 0.65 GPD/SQ FT
GROUND WATER OBSERVED AT 108 INCHES.
- EXPLORATION PIT #24** (UTM ZONE 12 NAD 83 (12T) 0407166E 4569171N)
0-15' FINE SANDY LOAM, GRANULAR STRUCTURE, 0.5 GPD/SQ FT
15-26' CLAY LOAM, BLOCKY STRUCTURE, 0.4 GPD/SQ FT (E)(H)=120 MPI
26-49' SANDY CLAY LOAM, BLOCKY STRUCTURE, 0.4 GPD/SQ FT (E)(H) =68 MPI
49-105' FINE SANDY LOAM, BLOCKY STRUCTURE, 0.5 GPD/SQ FT
GROUND WATER OBSERVED AT 105 INCHES.
- EXPLORATION PIT #25** (UTM ZONE 12 NAD 83 (12T) 0407112E 4569172N)
0-18' SANDY LOAM, GRANULAR STRUCTURE, 0.65 GPD/SQ FT
18-45' SANDY LOAM, MASSIVE STRUCTURE, 0.45 GPD/SQ FT=120 MPI
45-80' SANDY CLAY LOAM, MASSIVE STRUCTURE, (E)(H)
80-92' LOAMY SAND, WEAK MASSIVE STRUCTURE, 0.45 GPD/SQ FT
GROUND WATER OBSERVED AT 64 INCHES.



SOUTH QUARTER CORNER OF SECTION 7, TOWNSHIP 6 NORTH, RANGE 2 WEST, SALT LAKE BASE & MERIDIAN, U.S. SURVEY

Fenster Farms Subdivision Phase 4

Weber County, Utah

Reeve & Associates, Inc.
5160 S. 1500 W., RIVERDALE, UTAH 84405
TEL: (801) 564-0909 FAX: (801) 564-2666 www.reeve-assoc.com
LAND PLANNERS • CIVIL ENGINEERS • LAND SURVEYORS
TRA PARTNERS ENGINEERS • LANDSCAPE ARCHITECTS

REVISIONS	DESCRIPTION	COUNTY COMMENTS
DATE		
3-8-19		

Fenster Farms Subdivision Phase 4
PART OF THE SE QUARTER OF SECTION 7, T.6N., R.2W., S.1B. & M., U.S. SURVEY
WEBER COUNTY, UTAH

Phase 4 Exhibit

Project Info.
Engineer: N. Reeve
Designer: C. Cave
Begin Date: 1-8-20
Name: FENSTER FARM PHASE 4
Number: 1714-26

Sheet	1
1	Sheets