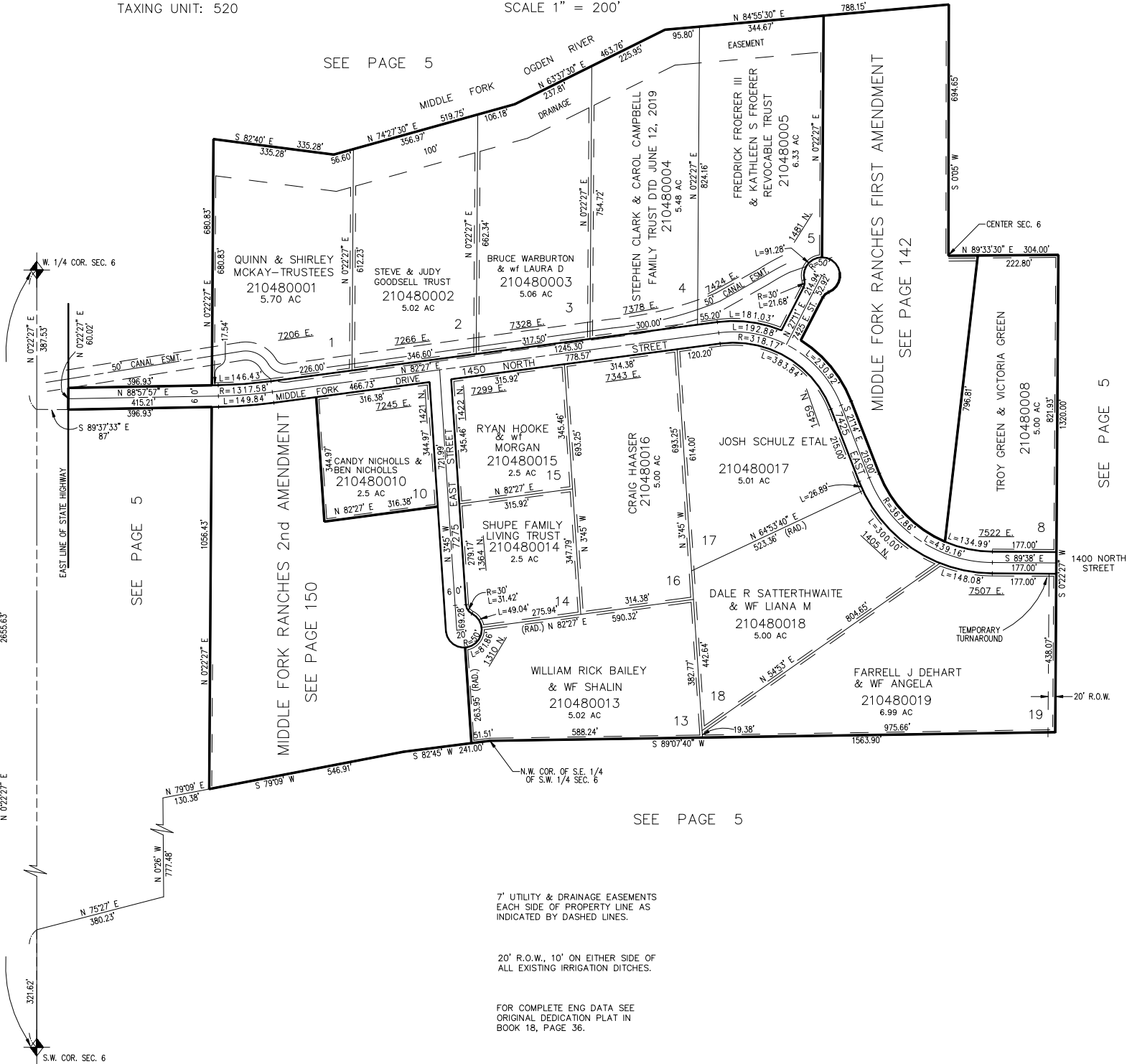


PART OF SECTION 6, T.6N., R.2E., S.L.B. & M.
MIDDLE FORK RANCHES

IN WEBER COUNTY
SCALE 1" = 200'

TAXING UNIT: 520

SEE PAGE 5



MIDDLE FORK RANCHES FIRST AMENDMENT
SEE PAGE 142

MIDDLE FORK RANCHES 2nd AMENDMENT
SEE PAGE 150

SEE PAGE 5

SEE PAGE 5

SEE PAGE 5

7' UTILITY & DRAINAGE EASEMENTS
EACH SIDE OF PROPERTY LINE AS
INDICATED BY DASHED LINES.

20' R.O.W., 10' ON EITHER SIDE OF
ALL EXISTING IRRIGATION DITCHES.

FOR COMPLETE ENG DATA SEE
ORIGINAL DEDICATION PLAT IN
BOOK 18, PAGE 36.