

# SECTION 6, T.6N., R.2E., S.L.B. & M.

IN WEBER COUNTY

SCALE 1" = 400'

TAXING UNIT: 520

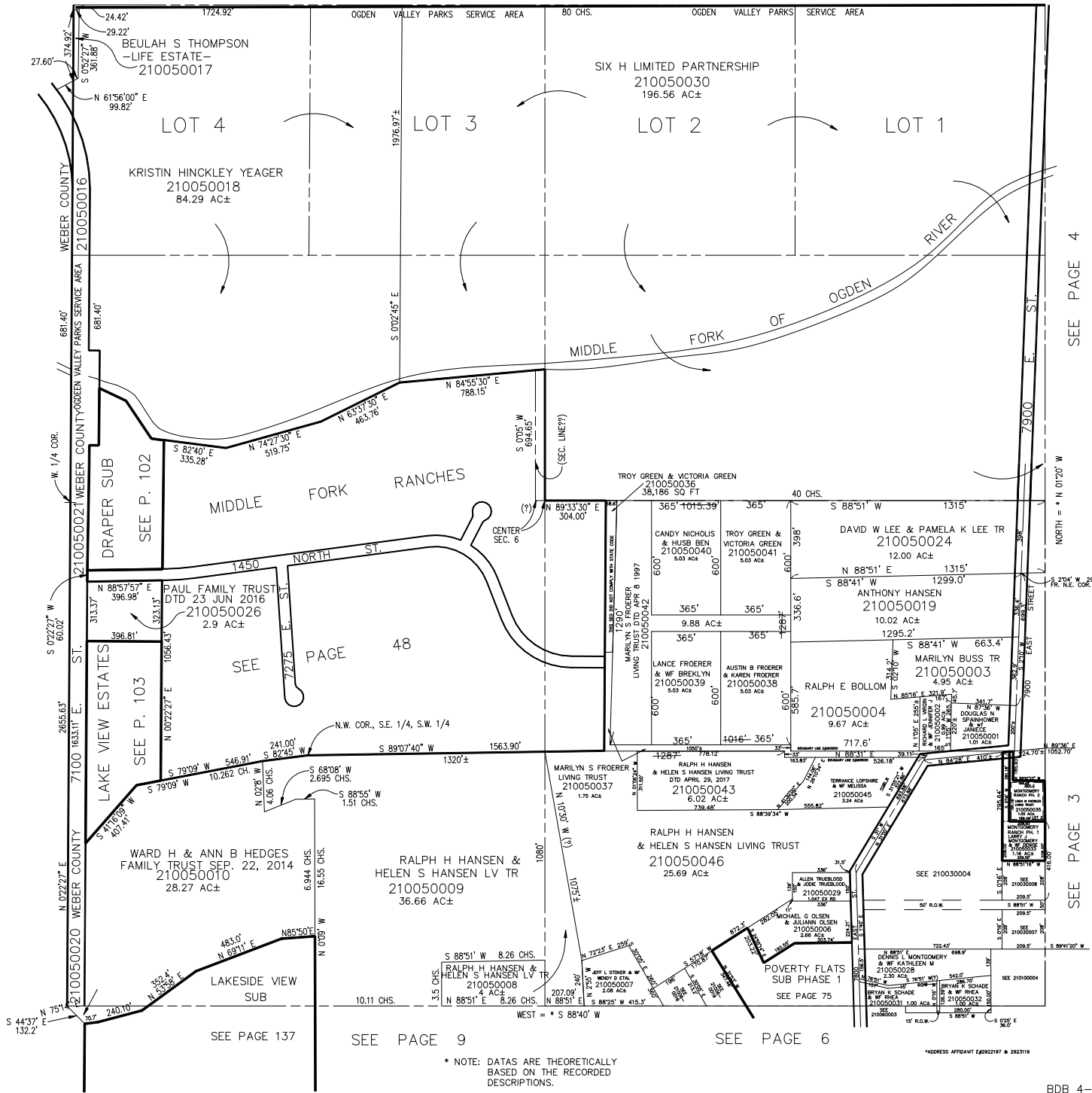
SEE BOOK 23, PAGE 12

SEE BOOK 20, PAGE 1

SEE PAGE 4

SEE PAGE 3

SEE PAGE 6



\* NOTE: DATAS ARE THEORETICALLY BASED ON THE RECORDED DESCRIPTIONS.

\*ADDRESS AFFIDAVIT E6292197 & 2923119